

28 August 1962

TELETYPEWRITER GROUP AN/FGA-2

Cog Service:

FSN:

Functional Class:

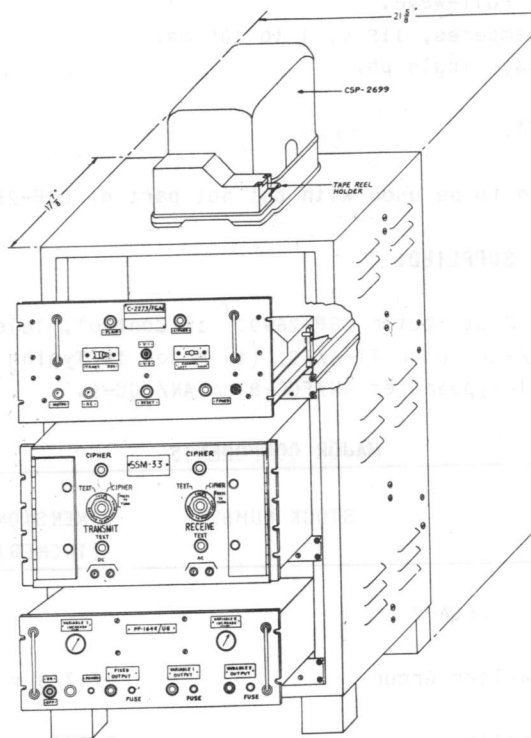
USA

USN

USAF

TYPE CLASS:

MANUFACTURER'S NAME/CODE NUMBER: Assembled by Norfolk Naval Shipyard.



Teletypewriter Group AN/FGA-2

FUNCTIONAL DESCRIPTION:

The AN/FGA-2 is designed as a rack-mounted equipment used with classified communication devices for passing messages, on-line, and using teletypewriter equipment.

No field changes in effect at time of preparation (26 April 1961).

TECHNICAL CHARACTERISTICS:

CONTROL, TELETYPEWRITER C-2273/FGA-2

TYPE OF CONTROL: Automatic.

TYPE OF SWITCHING: Automatic.

OPERATING POWER RQMT: 115 v ac, 60 cps, single ph; 120 v dc.

TELETYPEWRITER MIXER SSM-3

NUMBER OF CHANNELS: 2 channels.

AN/FGA-2 TELETYPEWRITER GROUP

EQUIPMENT ASSOCIATION: Normally used in conjunction with full-duplex terminal equipment with one Teletypewriter-Mixer.

TYPE OF OPERATION: Full-duplex, on-line operation utilizing the start-stop form of teletype operation.

OPERATIONAL SPEED: 60 wpm.

POWER SUPPLY PP-1646/UG

TYPE OF RECTIFIER: Metallic type.

TYPE OF RECTIFICATION: Full-wave.

OUTPUT: 115 v dc, 1.5 amperes, 115 v, 1 to 100 ma.

INPUT: 115 v ac, 60 cps, single ph.

RELATION TO OTHER EQUIPMENT:

The AN/FGA-2 is designed to be used with but not part of CSP-2699 and TSEC/KW-2.

EQUIPMENT REQUIRED BUT NOT SUPPLIED:

(1) Special Transmitter Distributor CSP-2699; (1) Control, Teletypewriter C-2192/UG; (1) Model 15 Teletypewriter AN/FGC-10 or TT-5/FG; (1) Model 14 Typing Reperforator TT-53/FG or TT-192/FG; (1) Model 19 Teletypewriter AN/FGC-8 or AN/FGC-9.

MAJOR COMPONENTS

QTY	ITEM	STOCK NUMBERS	DIMENSIONS (INCHES)	WEIGHT (LBS)
	Teletypewriter Group AN/FGA-2 consists of:			
1	Cabinet, Teletypewriter Group CY-2245/FGA-2		17-7/8 x 21-5/8 x 35-1/2	62
1	Control, Teletypewriter C-2273/FGA-2		7-1/2 x 12-1/8 x 19	27
1	Power Supply PP-1646/UG		7 x 8-1/2 x 19	41
1	Repeater-Mixer, Teletype- writer SSM-33		9-1/2 x 10-1/2 x 17	18

REFERENCE DATA AND LITERATURE:

BUREAU OF SHIPS INTERIM: Technical Manual for Installation & Maintenance Instructions for Teletypewriter Group AN/FGA-2.

TUBE, CRYSTAL AND/OR SEMI-CONDUCTOR DATA:

TUBES: Data not available.

CRYSTALS: Data not available.

SEMI-CONDUCTORS: Data not available.