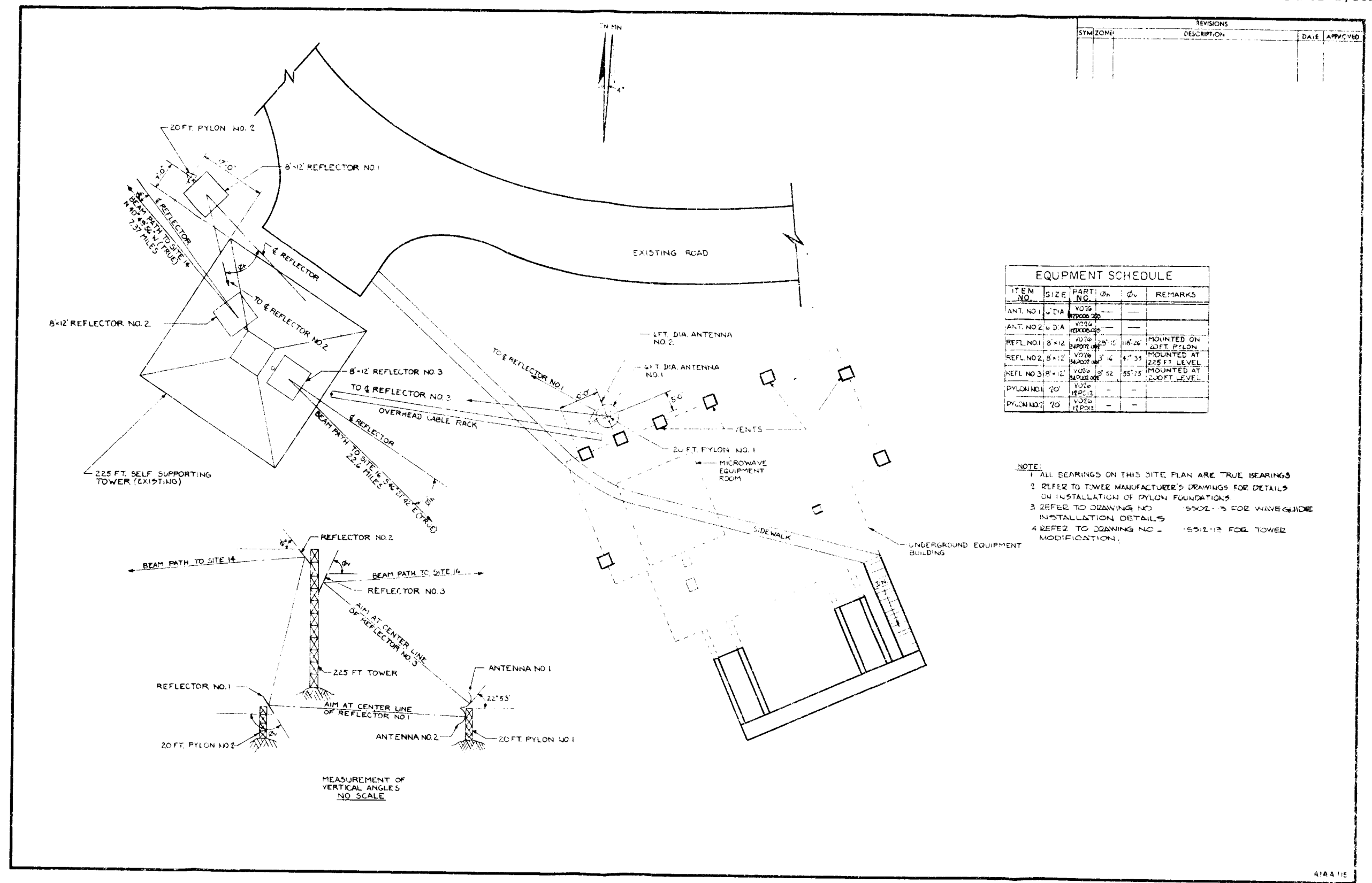


A14A112

Foldout 5-1. Basic System Concept



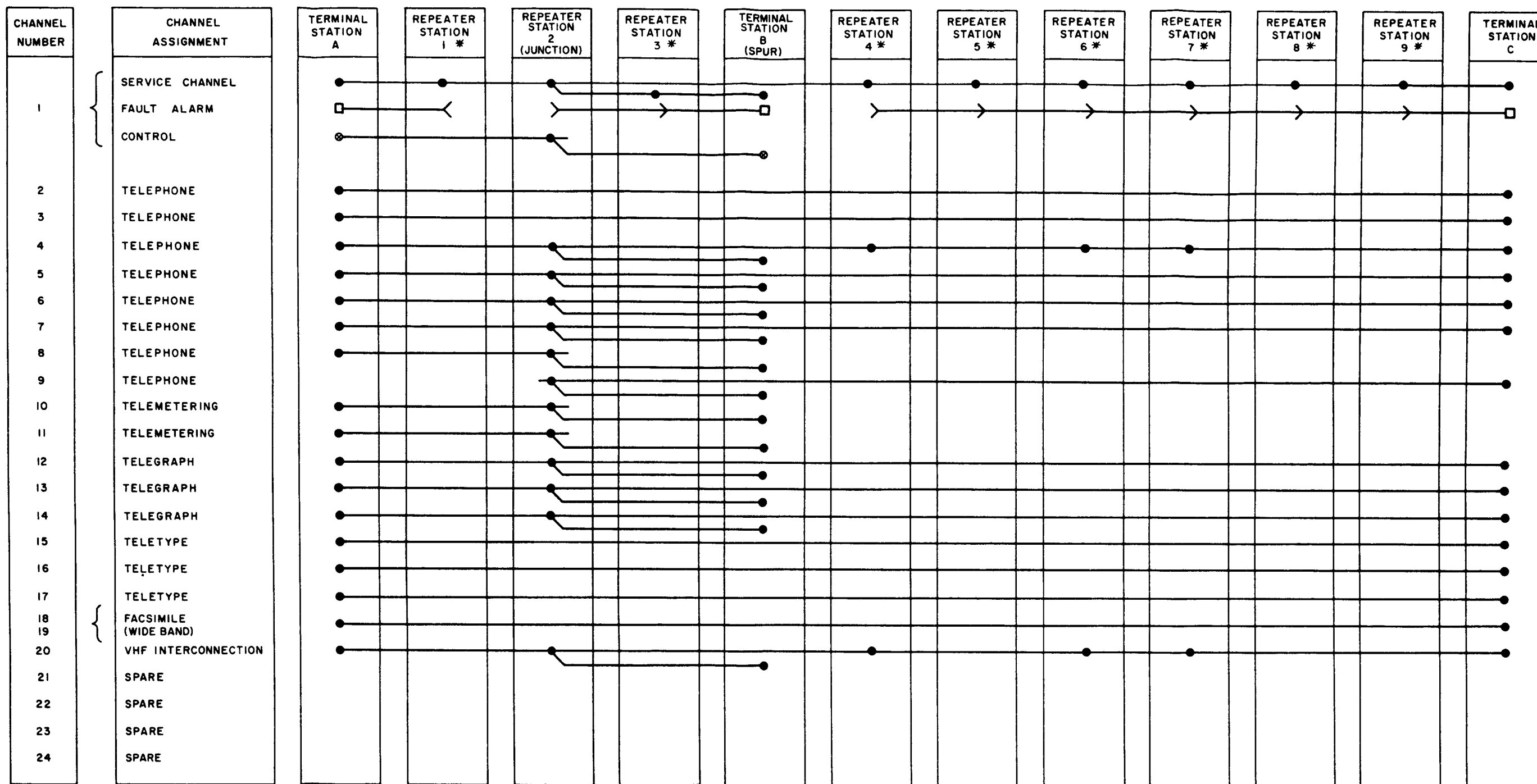
SYMBLON		REVISIONS	
NO.	DESCRIPTION	DATE	APPROVED

ITEM NO.	SIZE	PART NO.	QTY	REMARKS
ANT. NO. 1	4 DIA	V036	1	
ANT. NO. 2	4 DIA	V036	1	
REFL. NO. 1	8x12	V076	1	MOUNTED ON 20 FT. PYLON
REFL. NO. 2	8x12	V076	1	MOUNTED AT 225 FT. LEVEL
REFL. NO. 3	8x12	V076	1	MOUNTED AT 225 FT. LEVEL
PYLON NO. 1	20'	V026	1	
PYLON NO. 2	20'	V026	1	

NOTE:  
 1 ALL BEARINGS ON THIS SITE PLAN ARE TRUE BEARINGS  
 2 REFER TO TOWER MANUFACTURER'S DRAWINGS FOR DETAILS ON INSTALLATION OF PYLON FOUNDATIONS  
 3 REFER TO DRAWING NO. 5502-13 FOR WAVEGUIDE INSTALLATION DETAILS  
 4 REFER TO DRAWING NO. 5512-13 FOR TOWER MODIFICATION.

MEASUREMENT OF VERTICAL ANGLES  
 NO SCALE

Foldout 5-2. Typical Site Layout



NOTES

1. ● DENOTES CHANNEL DROPPED OR INSERTED
2. ⊗ DENOTES SPUR SYSTEM JUNCTION POINT
3. □ DENOTES FAULT ALARM MONITORING STATION
4. > DENOTES FAULT REPORTING STATION
5. \* DENOTES UNATTENDED STATION
6. ⊗ DENOTES CONTROL FUNCTION

A144122

Foldout 5-3. Channelization Diagram