

115V AC T206, T301, T302, T303, T304  
CONNECT ON 115V. PRI. TAP

230V AC T206, T301, T302, T303, T304  
CONNECT ON 230V. PRI. TAP

440V AC USE EXTERNAL BULKHEAD  
TRANSFORMER TO OBTAIN  
115V. OR 230V.

115V DC T206, T301, T302, T303  
CONNECT ON 115V. PRI. TAP

FOR 4 WIRE CONTROL RE-  
MOVE LINK FROM 9 TO  
GROUND ON TB. B.

230V DC T206, T301, T302, T303  
CONNECT ON 115V. PRI. TAP

FOR 4 WIRE CONTROL  
REMOVE LINK FROM 9 TO  
GROUND ON TB. B.

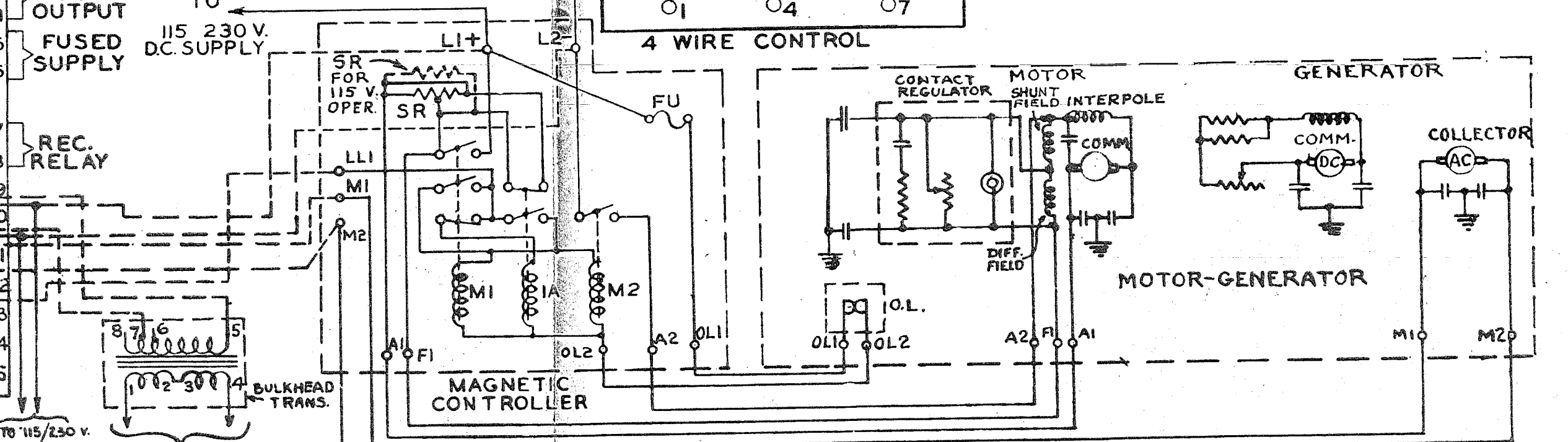
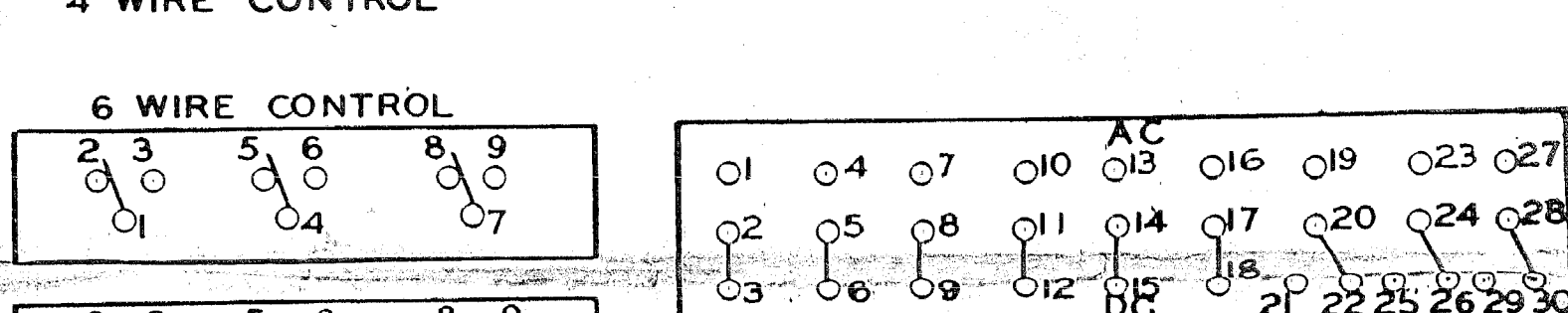
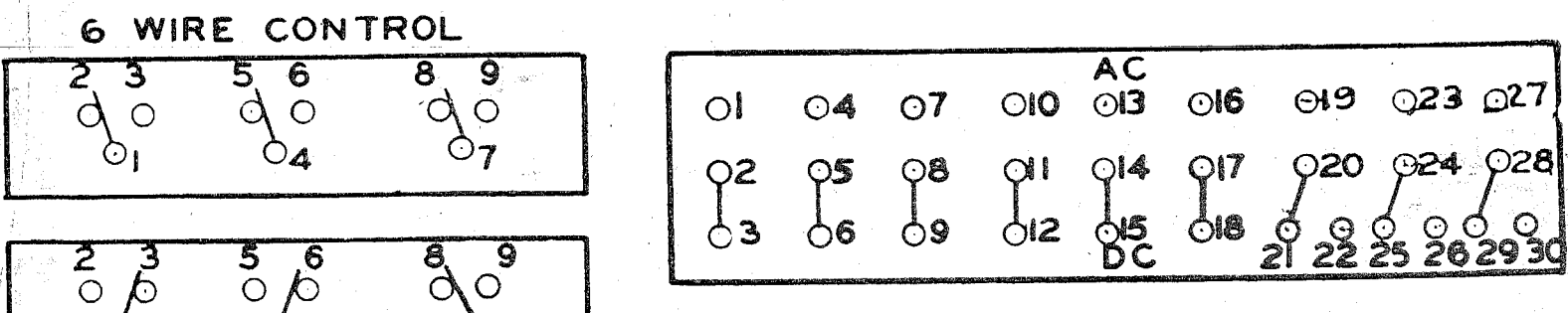
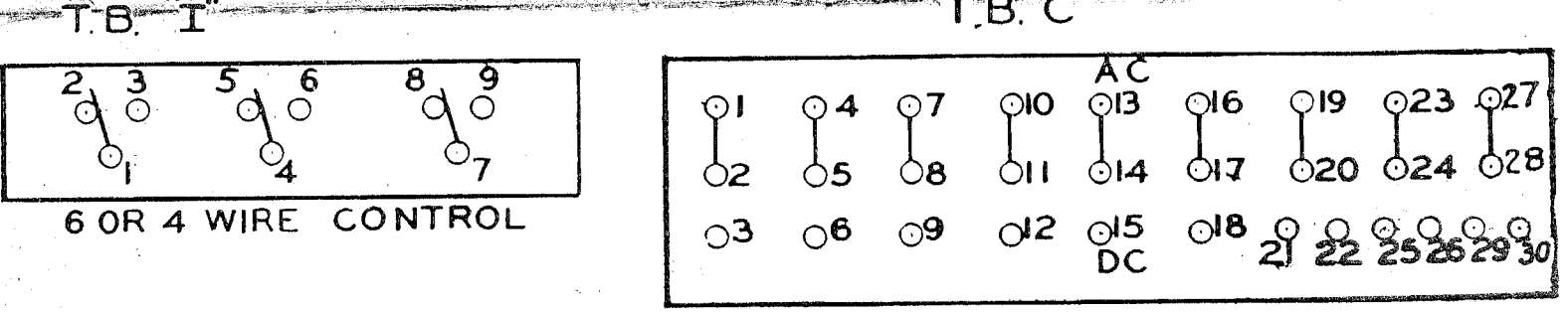
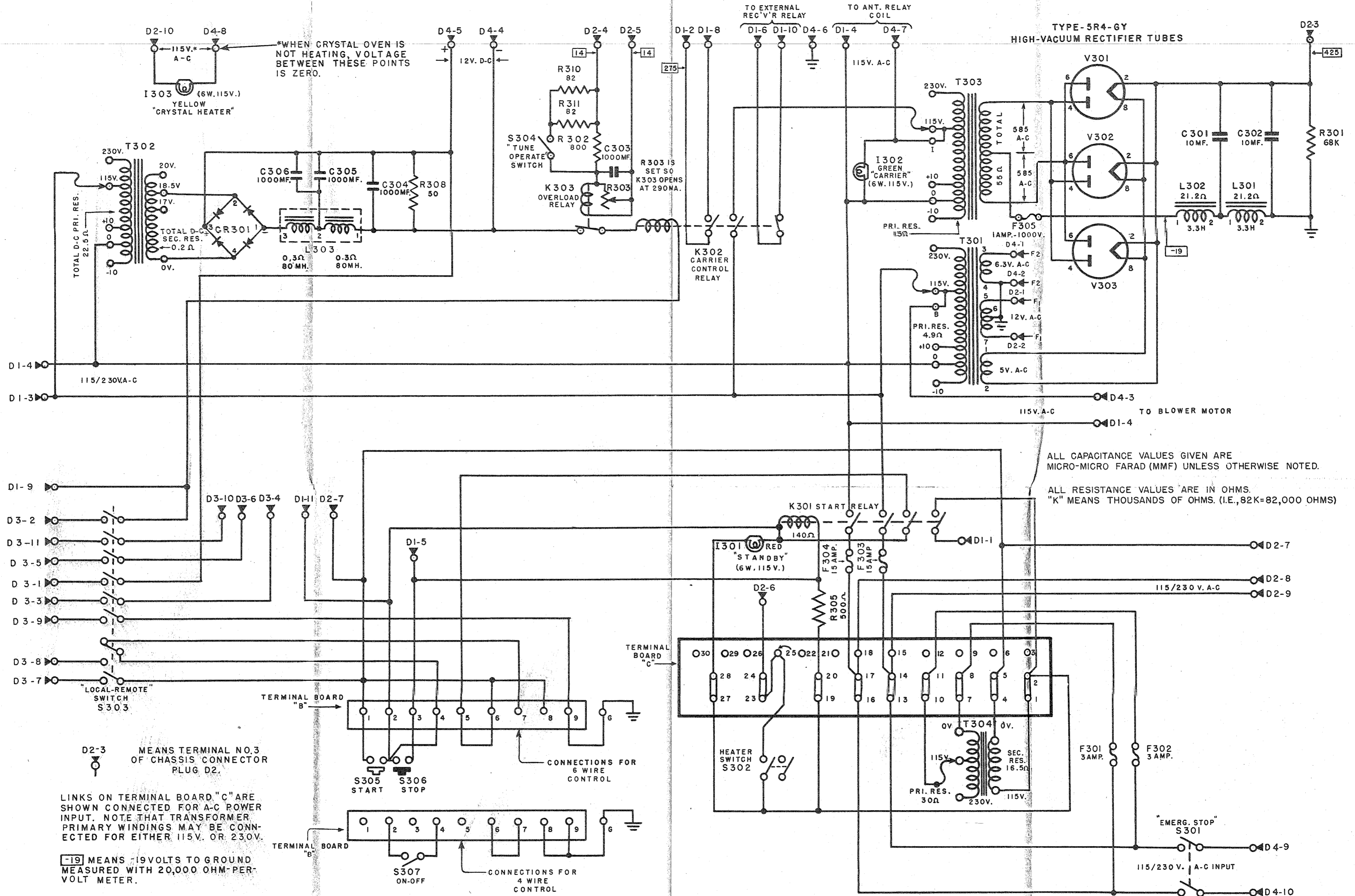


Figure 163—Transmitter, Overall Schematic Diagram

RESTRICTED

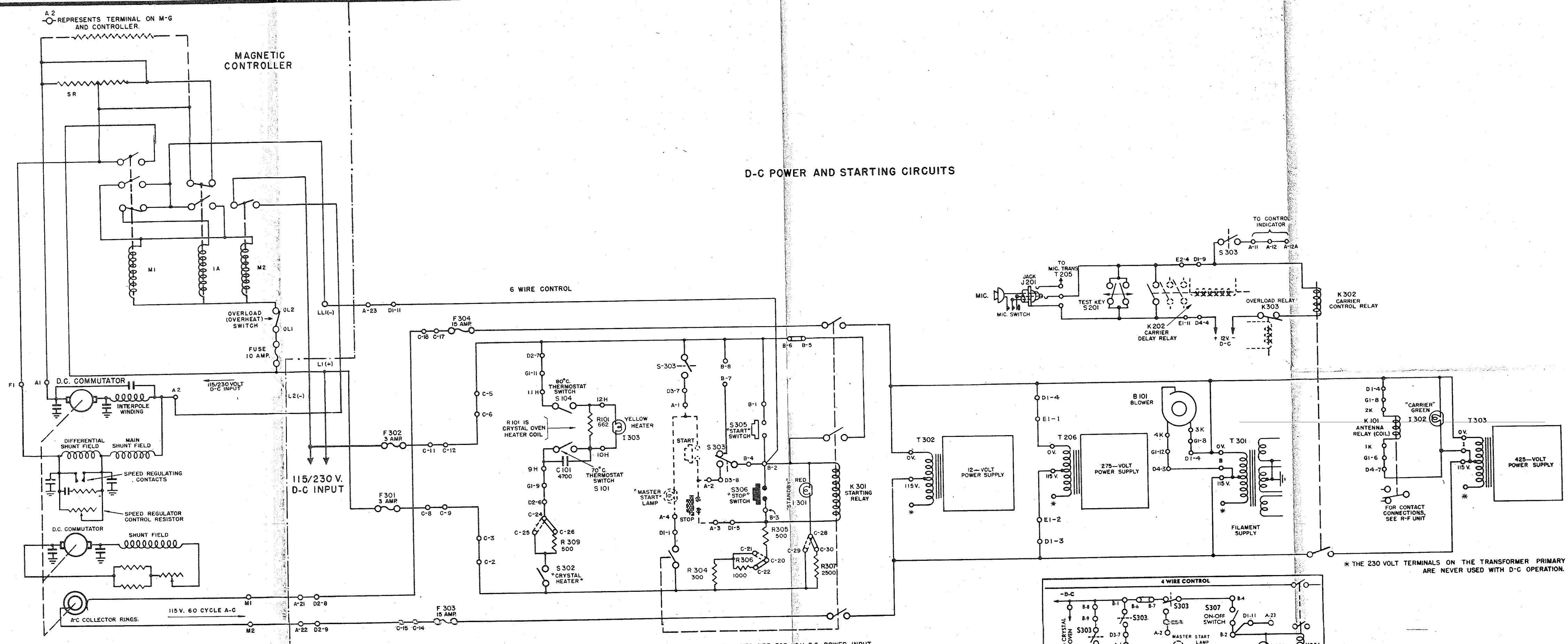




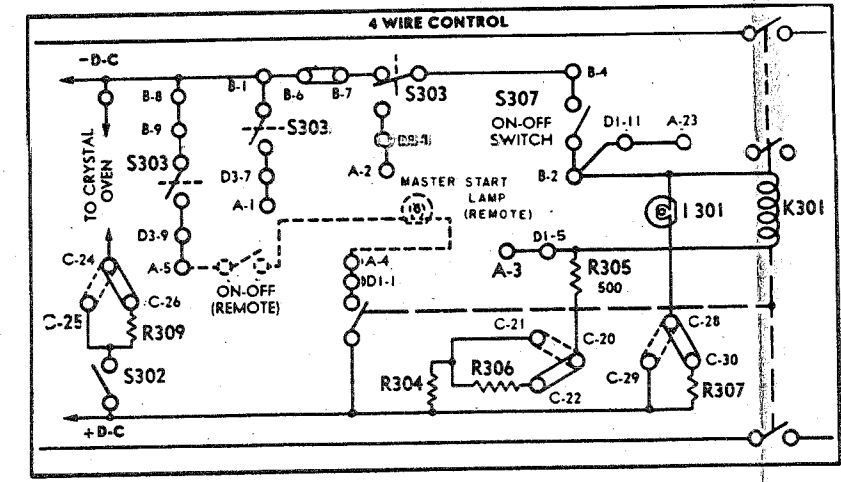
POWER UNIT (A-C CONNECTIONS)

Figure 154—Power Unit, A-C Connections, Schematic Diagram

RESTRICTED



- - - - - LINK CONNECTIONS SHOWN IN BROKEN LINES ARE FOR 115V. D-C POWER INPUT.  
 \_\_\_\_\_ LINK CONNECTIONS SHOWN IN SOLID LINES ARE FOR 230V. D-C POWER INPUT.  
 ..... CIRCUITS IN DOTTED LINES ARE REMOTE CONTROL CONNECTIONS.  
 - - - - - INDICATES MECHANICAL LINKAGE OF CONTACTS.

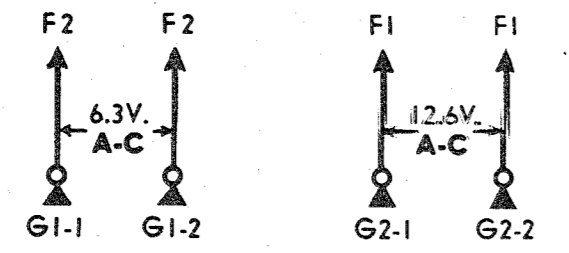
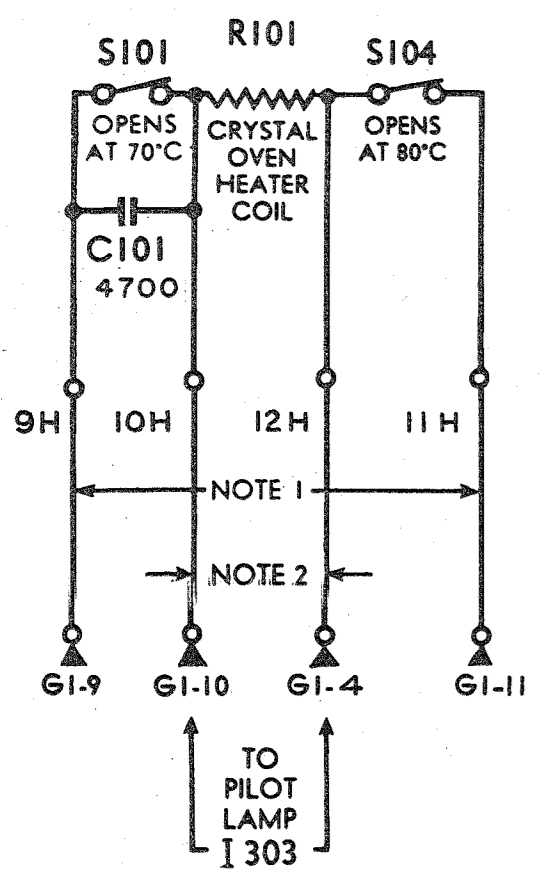
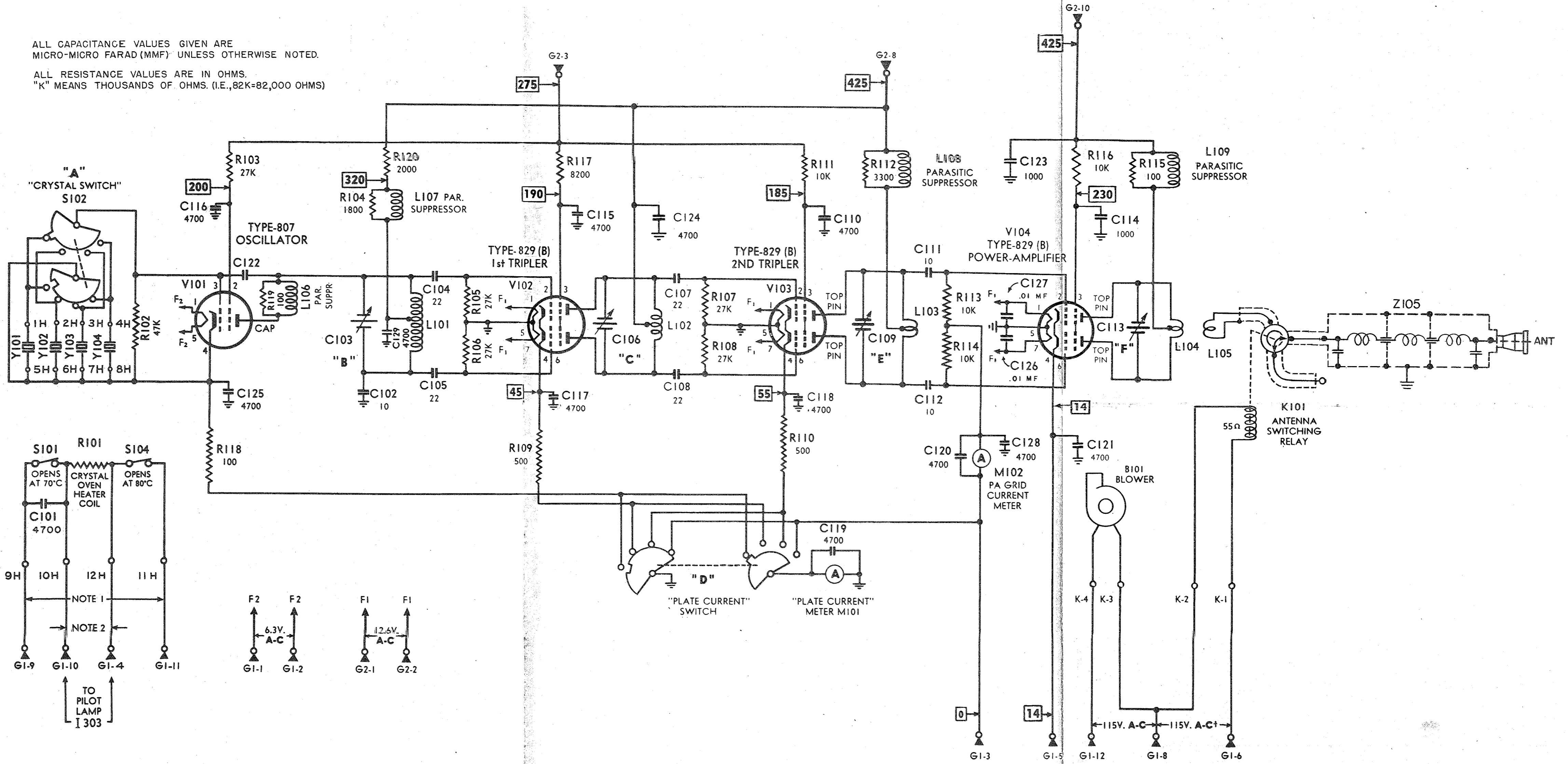


\* THE 230 VOLT TERMINALS ON THE TRANSFORMER PRIMARY ARE NEVER USED WITH D-C OPERATION.

Figure 162—Power and Starting Circuits—D-C, Schematic Diagram

RESTRICTED

ALL CAPACITANCE VALUES GIVEN ARE MICRO-MICRO FARAD (MMF) UNLESS OTHERWISE NOTED.  
 ALL RESISTANCE VALUES ARE IN OHMS.  
 "K" MEANS THOUSANDS OF OHMS. (I.E., 82K=82,000 OHMS)



NOTE 1—THIS VOLTAGE IS 115V. A-C FOR A-C POWER INPUT, AND IS 115V. D-C FOR D-C POWER INPUT.

NOTE 2—THIS VOLTAGE IS 115V. A-C OR D-C AND IS PRESENT ONLY WHEN CRYSTAL OVEN IS HEATING.

⊙ MEANS TERMINAL 3 OF PLUG G2-3

[25] MEANS 25V. D-C MEASURED TO GROUND WITH A 20,000 OHM-PER-VOLT METER.

\*NO VOLTAGE EXISTS BETWEEN THESE TWO POINTS UNLESS MIC. SWITCH, TEST KEY, OR EXTERNAL KEY IS CLOSED.

R. F. UNIT

Figure 160—RF Unit, Schematic Diagram  
 RESTRICTED