

DEC 23 1962

BULLETIN NO. 1064

ISSUE 2

JANUARY, 1942

TELETYPE

PRINTING TELEGRAPH SYSTEMS

PARTS

SINGLE MAGNET REPERFORATOR
MODELS 14 AND 20 NON-TYPING



REG. U. S. PAT. OFF.
CORPORATION

SUBSIDIARY OF

Western Electric Company

CHICAGO, U. S. A.

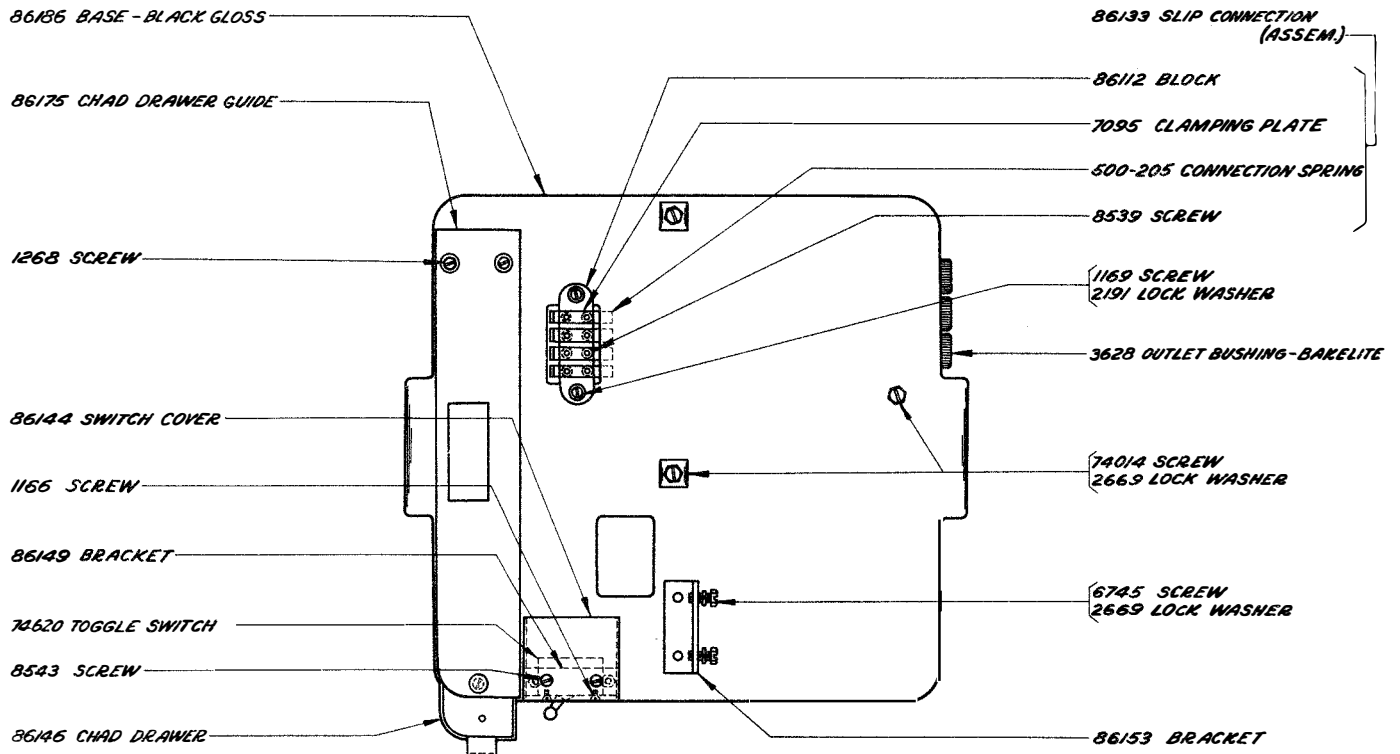


ALPHABETICAL INDEX

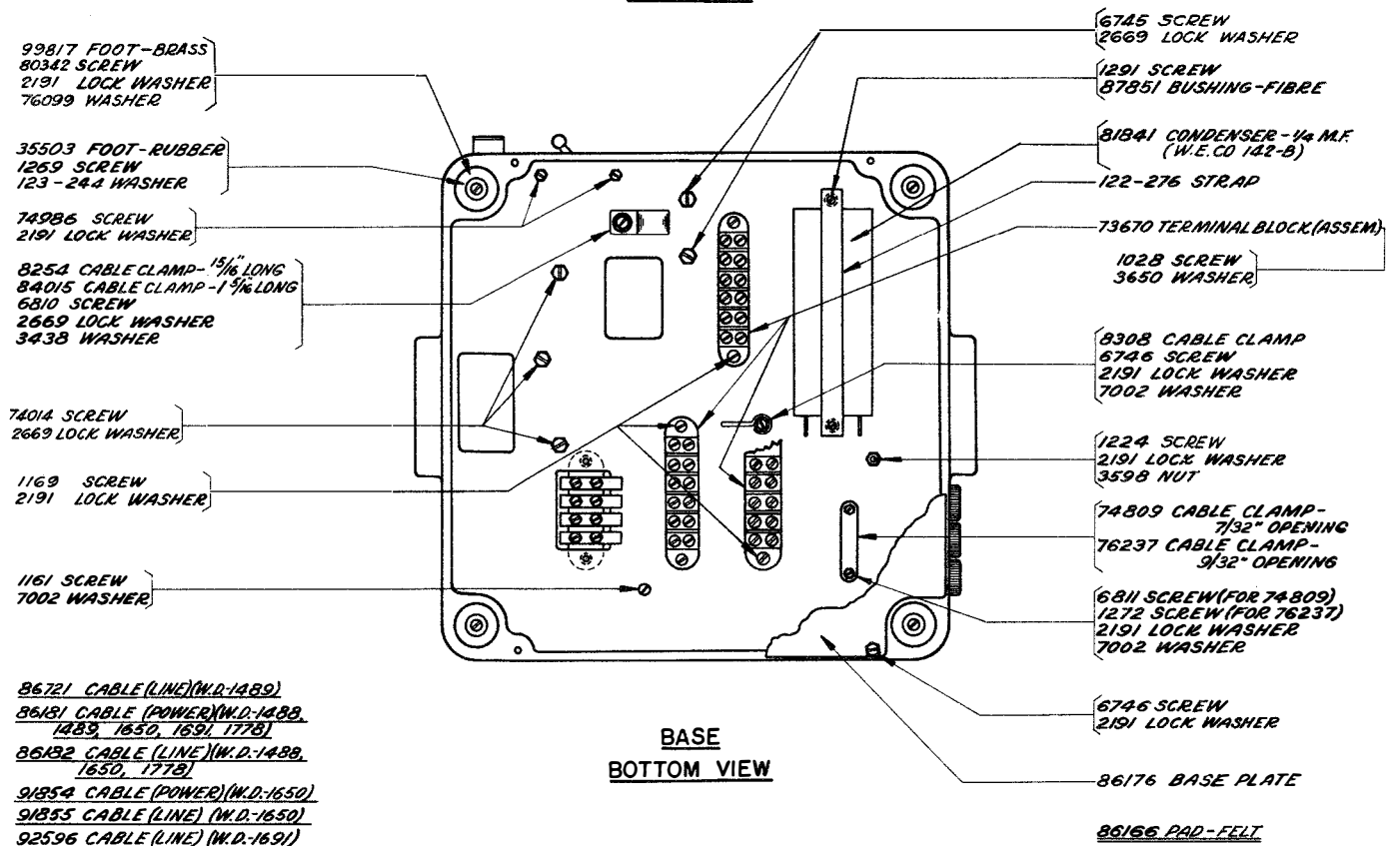
	<u>Page</u>
Base - Top and Bottom Views	1
Base Plate	1
Cables	1,10
Cable Clamps	1,6
Cam Sleeves	2
Center Contact Governor (Assem.)	11
Chad Chutes	2,5
Chad Drawer	1
Clutch Throwout Lever	2
Condensers	1,6,7
Connecting Block (Assem.)	7
Control Relay (Assem.)	6
Cords - Line and Power	7
Covers	8
Filter Units	7
Frame	2
Gears	12
Governor Brush and Speed Adjusting Bracket (Assem.)	11
Governor Parts	11
Lamp	8
Line Cords (Assem.)	7
Line Relay Radio Filter (Assem.)	7
Magnets	3,6
Main Shaft (Assem.)	2
Motors - Governed	10
Motor Units (Assem.) - Governed	10
Motors - Synchronous	9
Motor Units (Assem.) - Synchronous	9
Name Plates	8,9,10
Notes of Explanation	13
Numerical Index	14
Pad - Base	1
Pinions	12
Plugs - Cords	7
Power Cords (Assem.)	7
Punch Arm	2
Punch Blocks (Assem.)	4
Punch Unit	5
Radio Filters	7
Range Scale (Assem.)	4
Resistors	6,7
Resistor Units (Assem.)	6

ALPHABETICAL INDEX

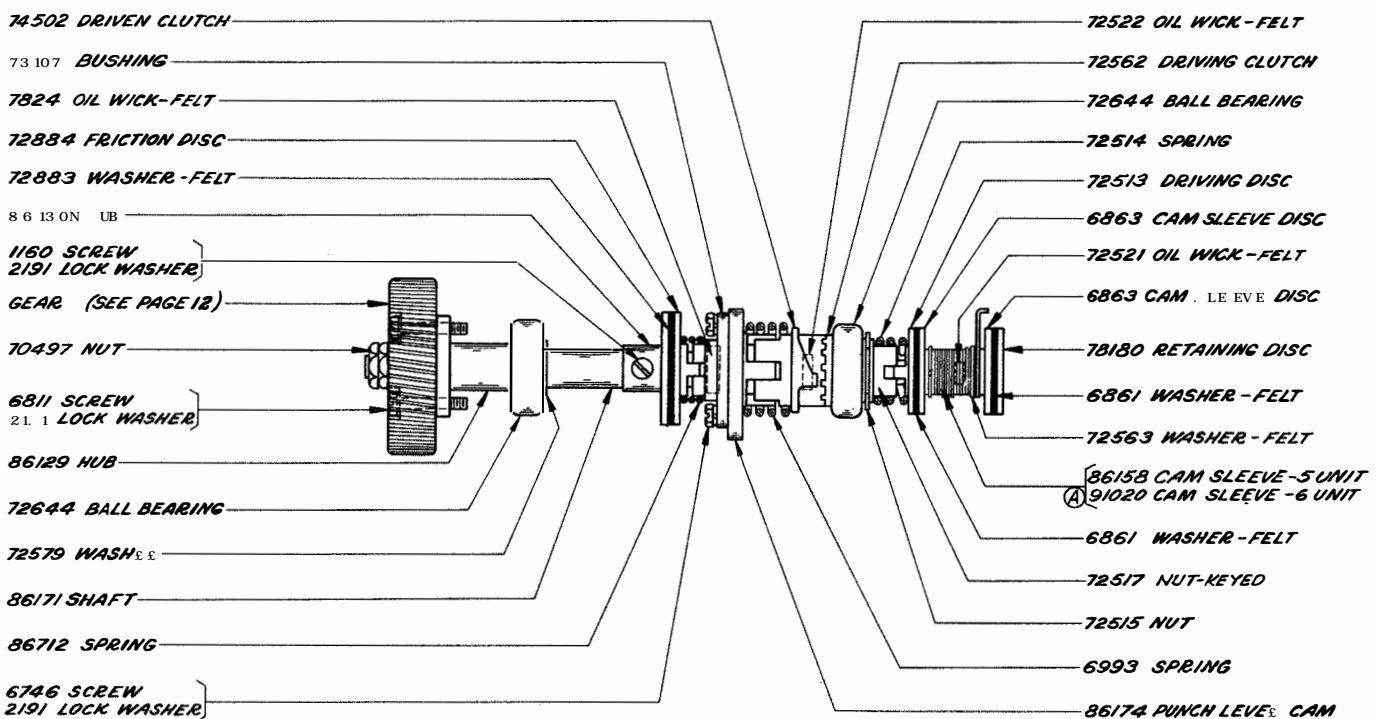
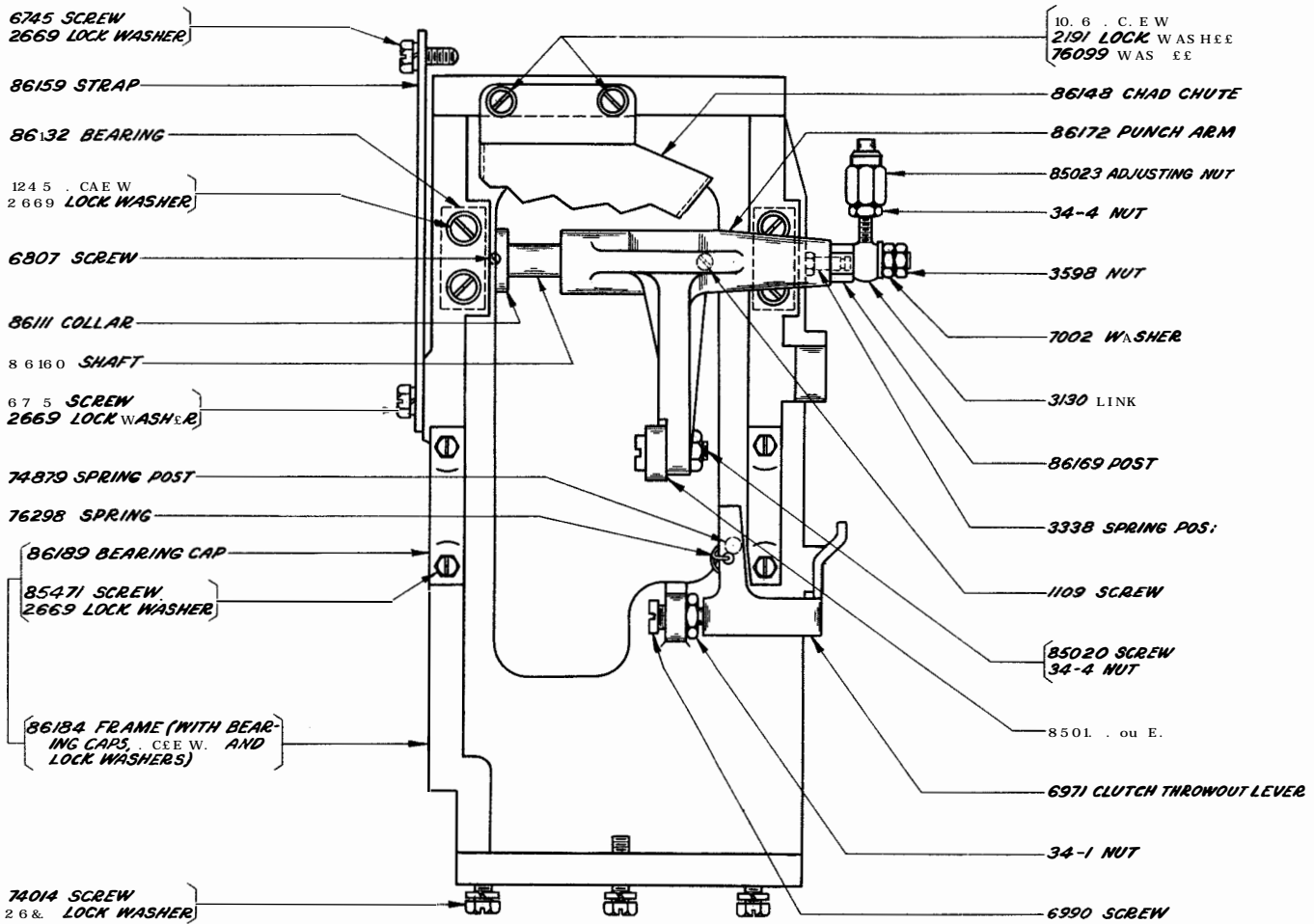
	<u>Page</u>
Selector Unit (Assem.)	3
Slip Connection (Assem.)	1
Tape Reel Parts	8
Targets	12
Target Lamp (Assem.)	8
Terminal Blocks	1,9,10
Toggle Switches	1,8
Tuning Forks	12



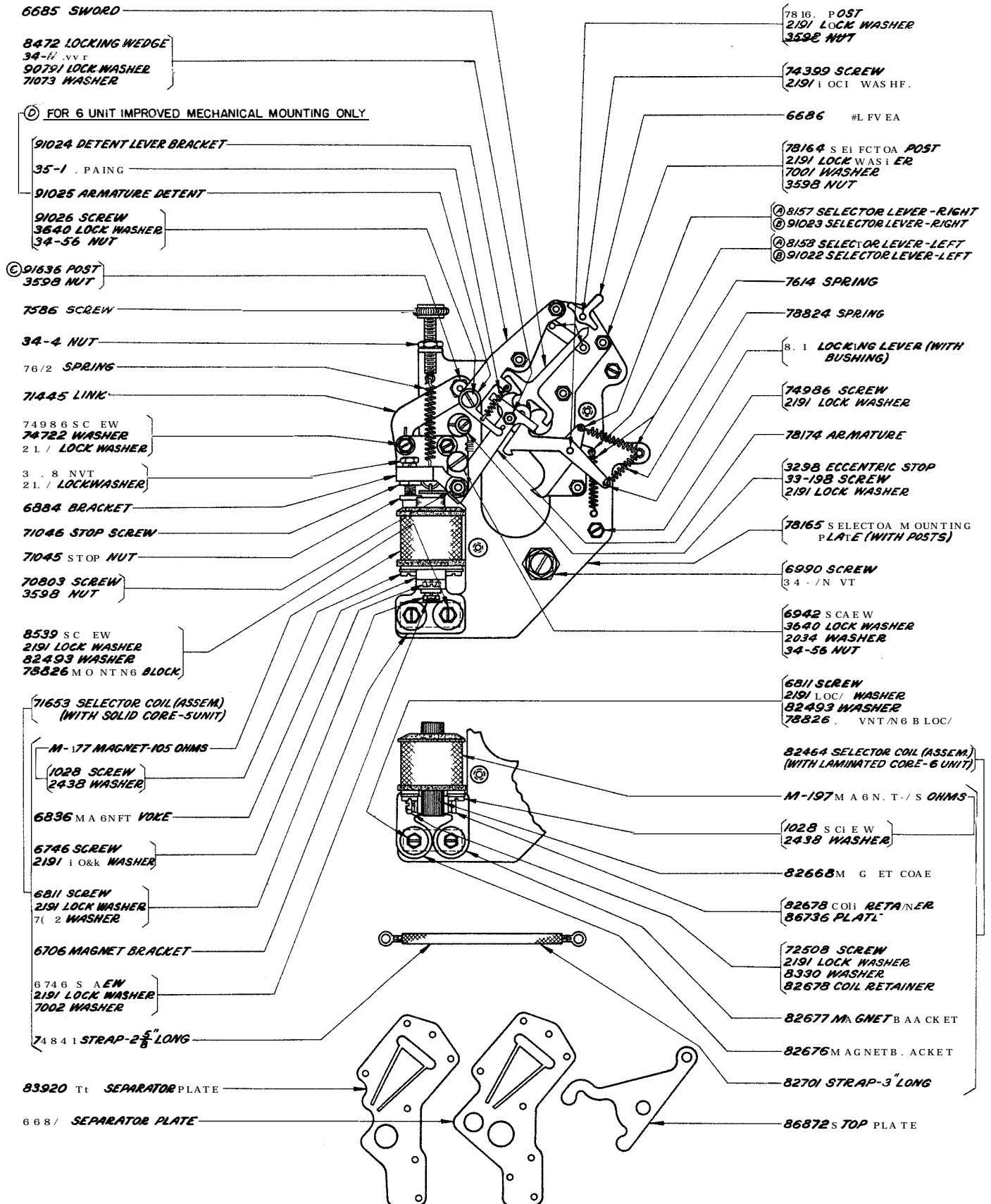
**BASE
TOP VIEW**



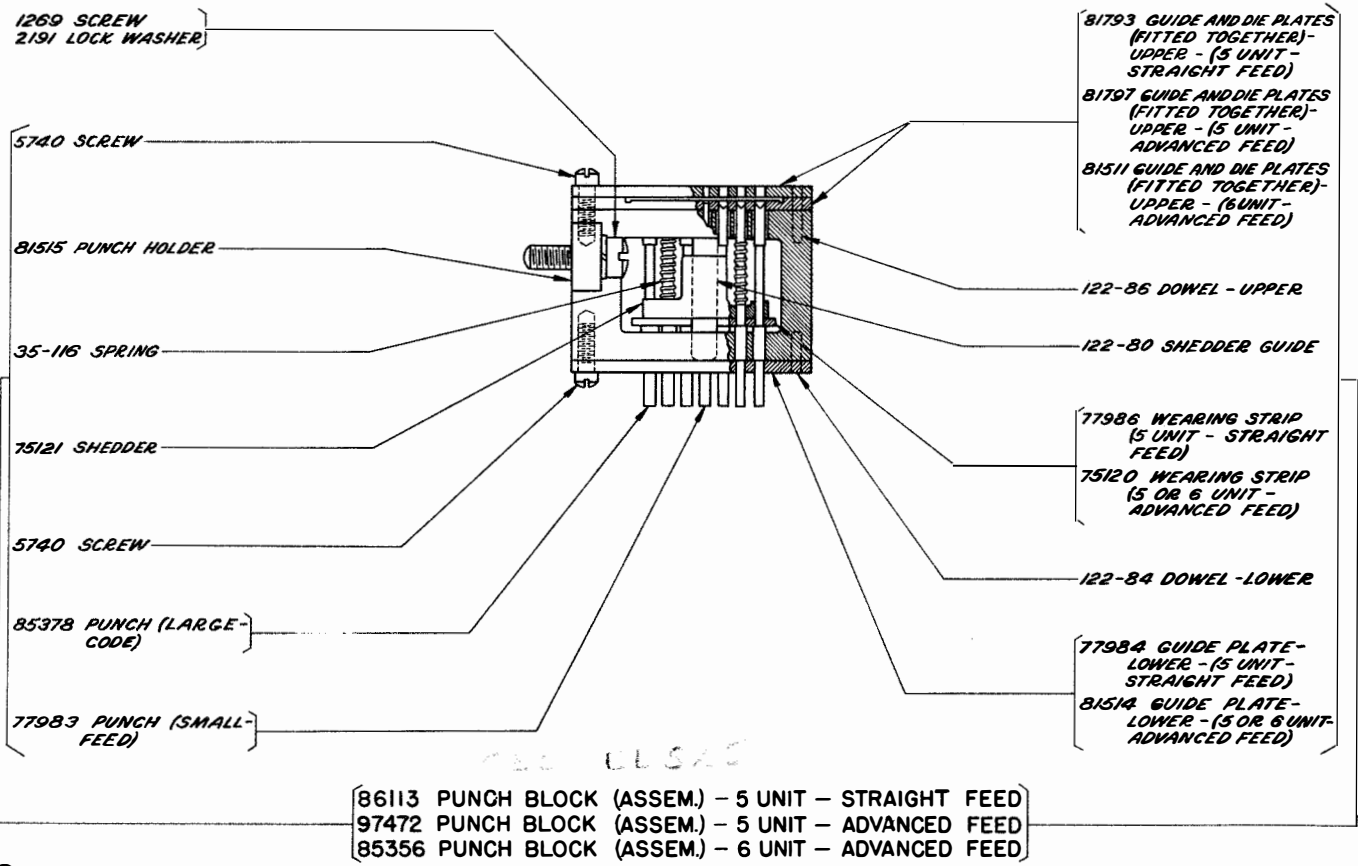
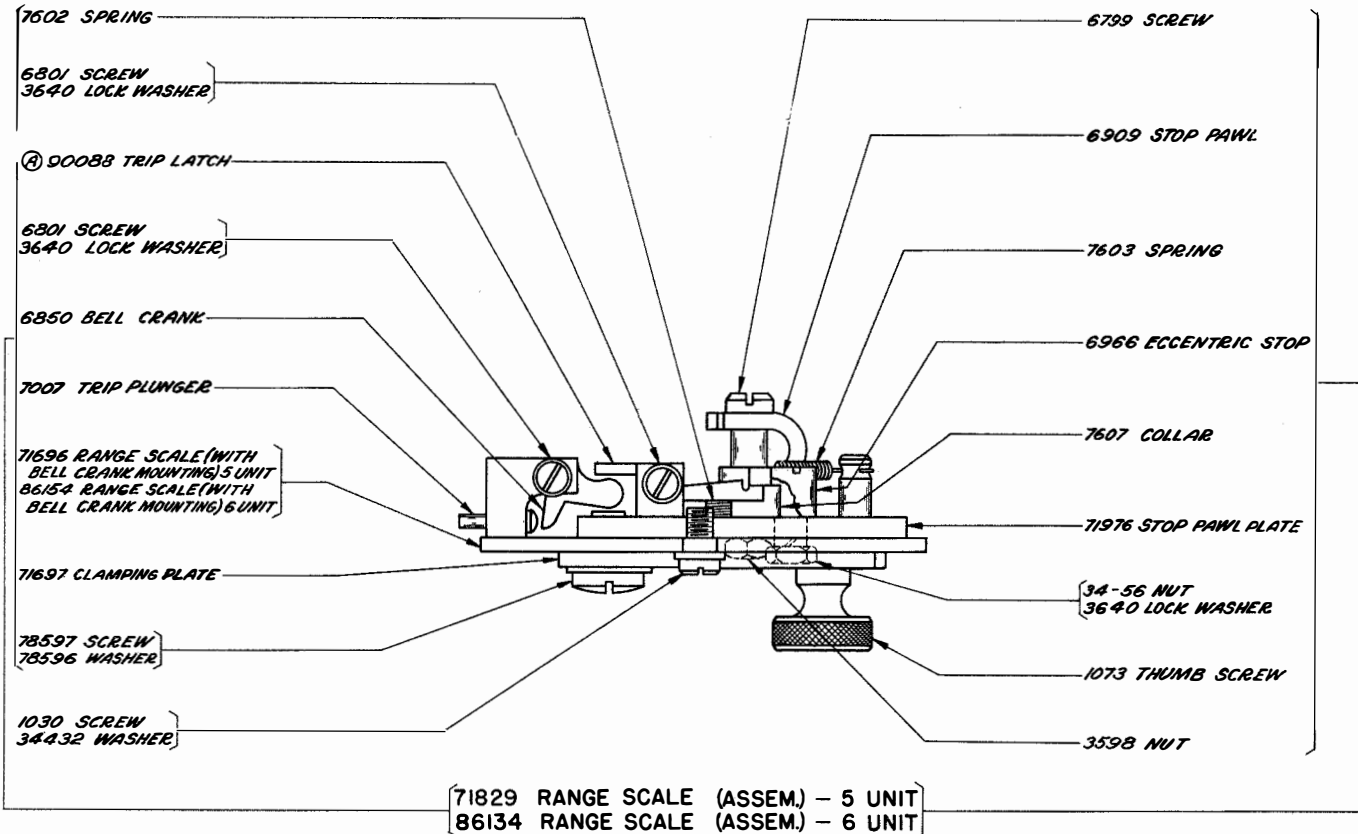
**BASE
BOTTOM VIEW**



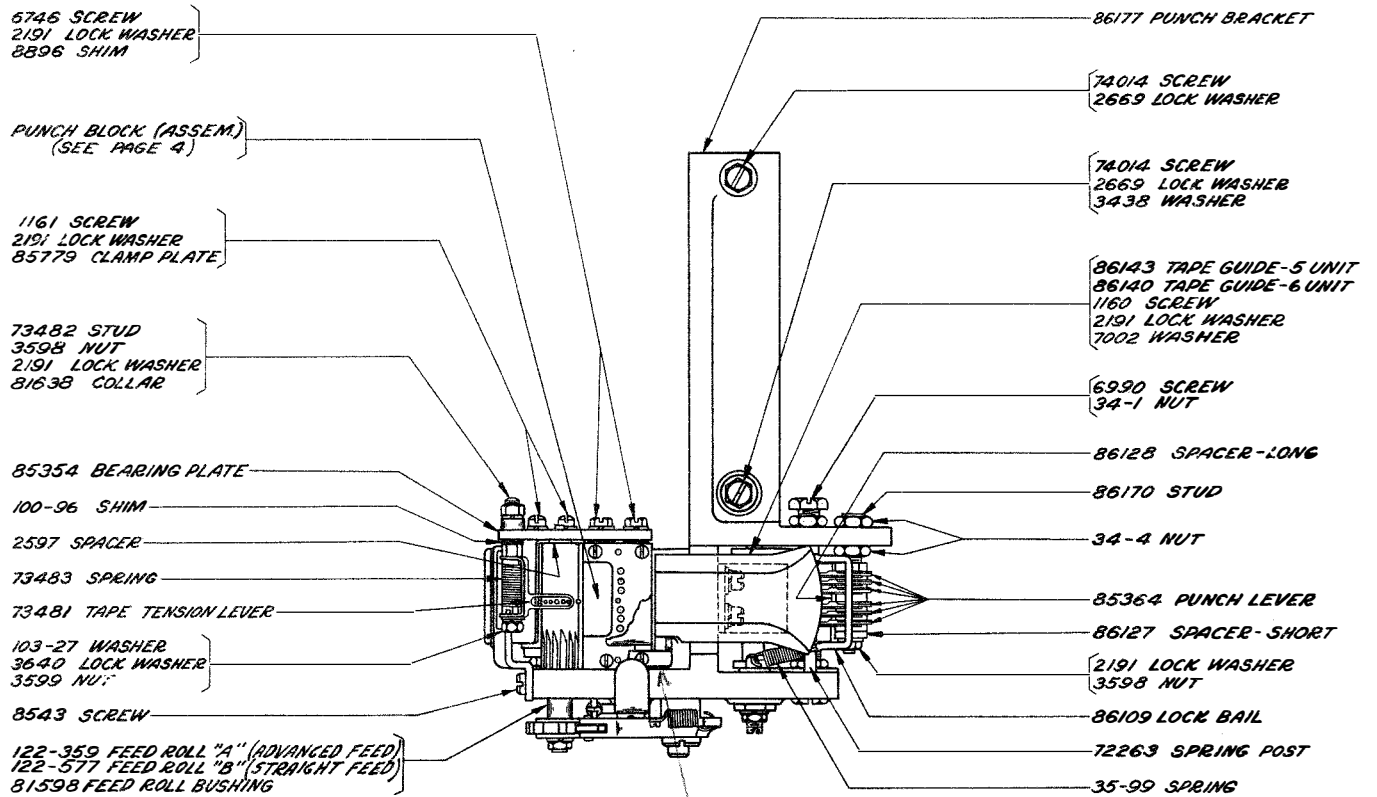
(A) SEE PAGE 13 FOR EXPLANATION



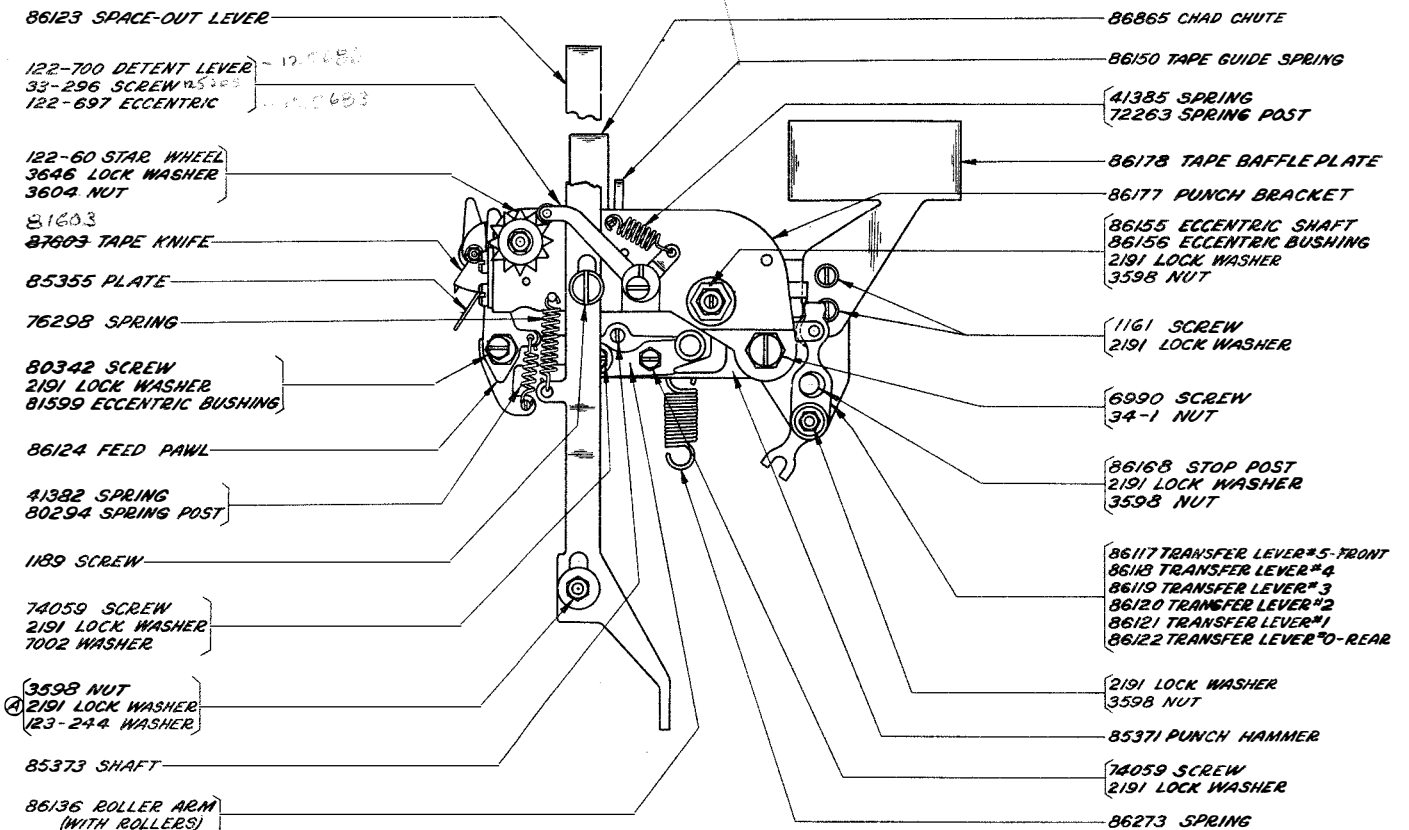
(A)(B)(C) SEE PAGE 13 FOR EXPLANATION



② SEE PAGE 13 FOR EXPLANATION

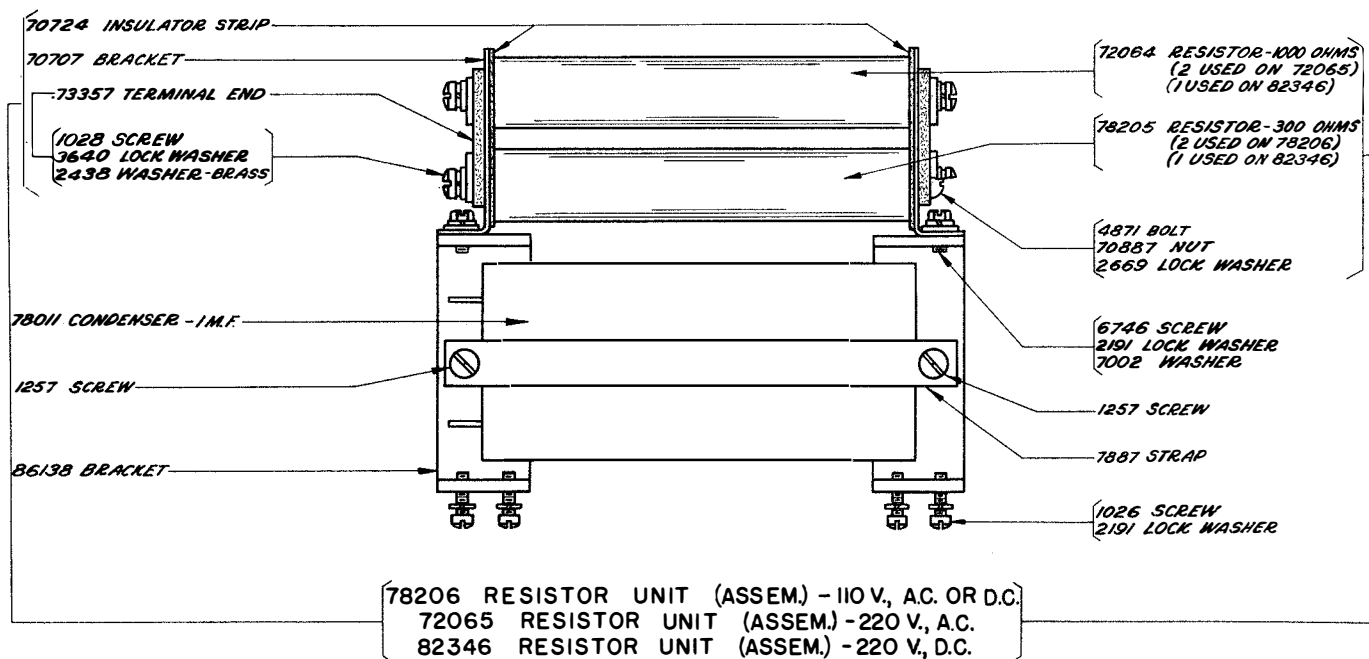
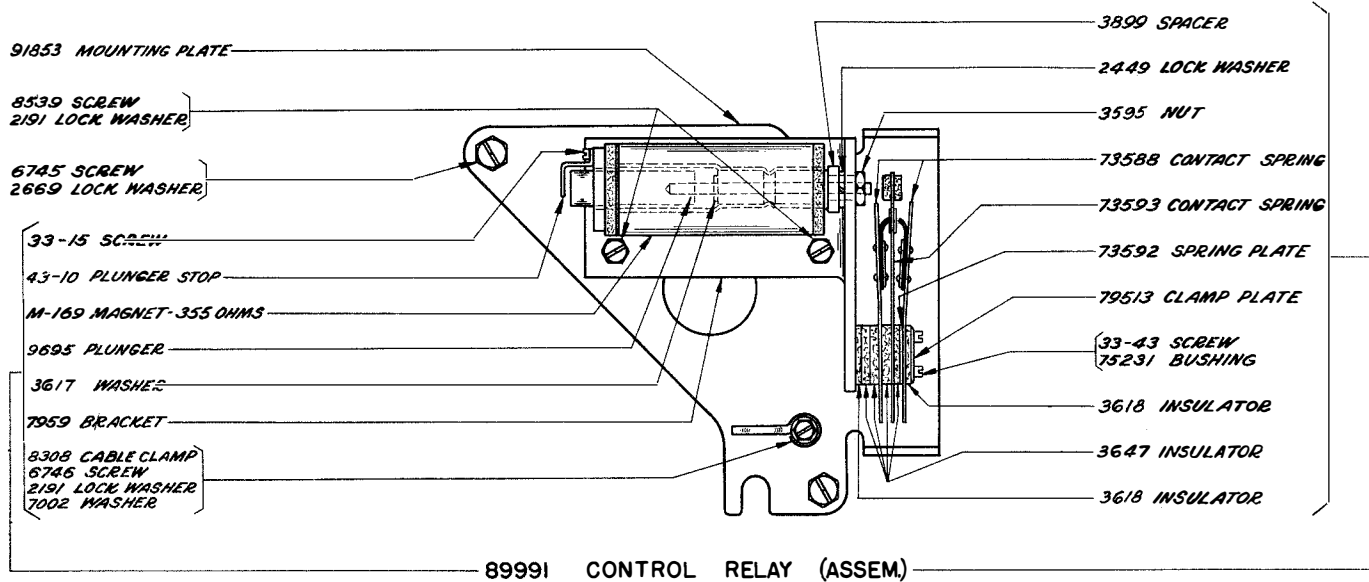
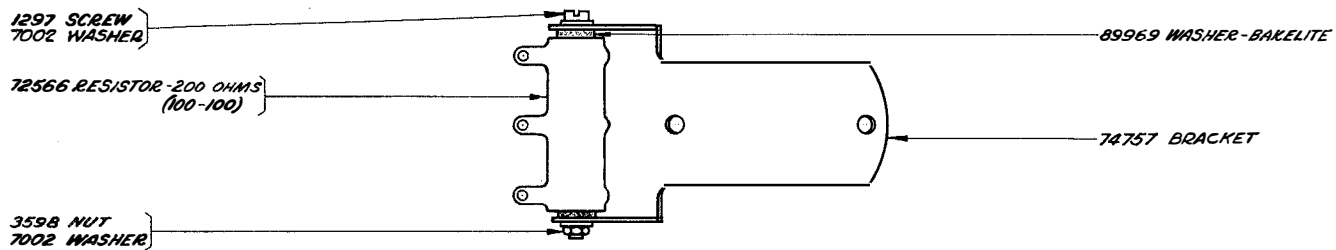


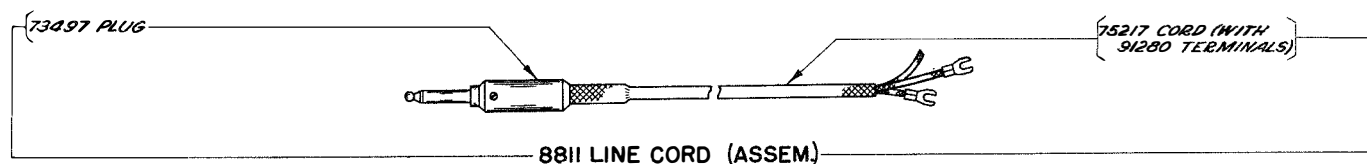
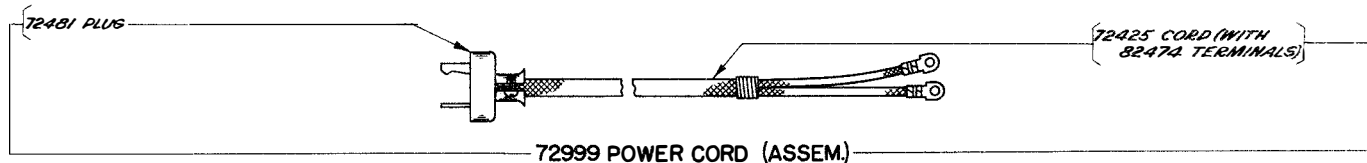
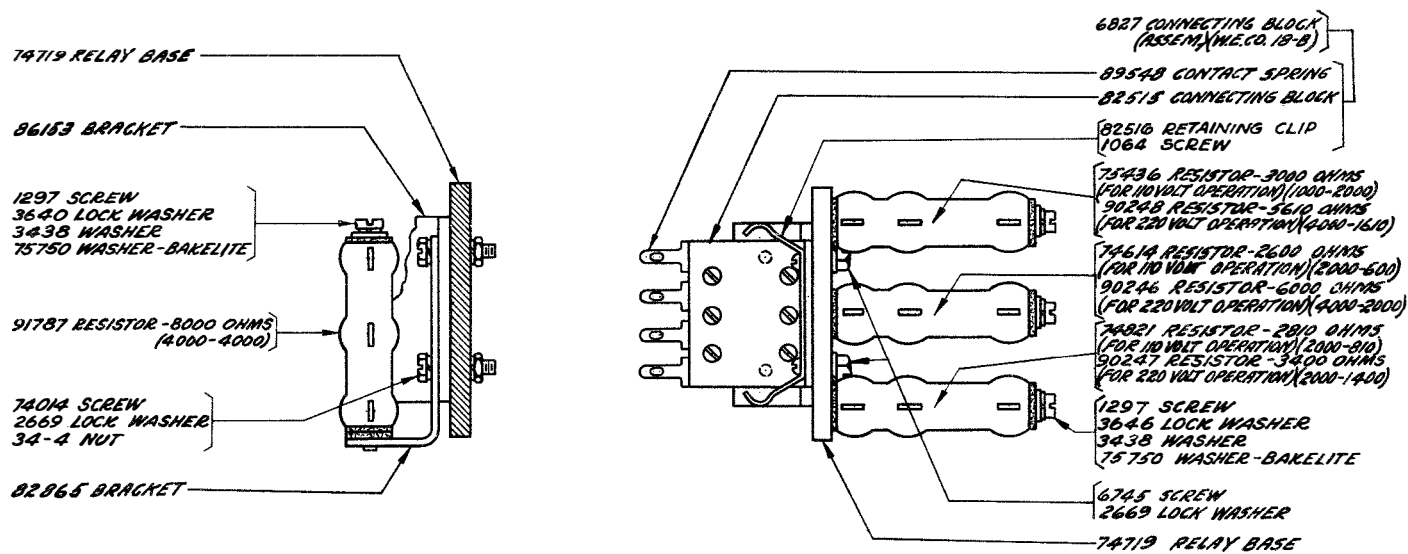
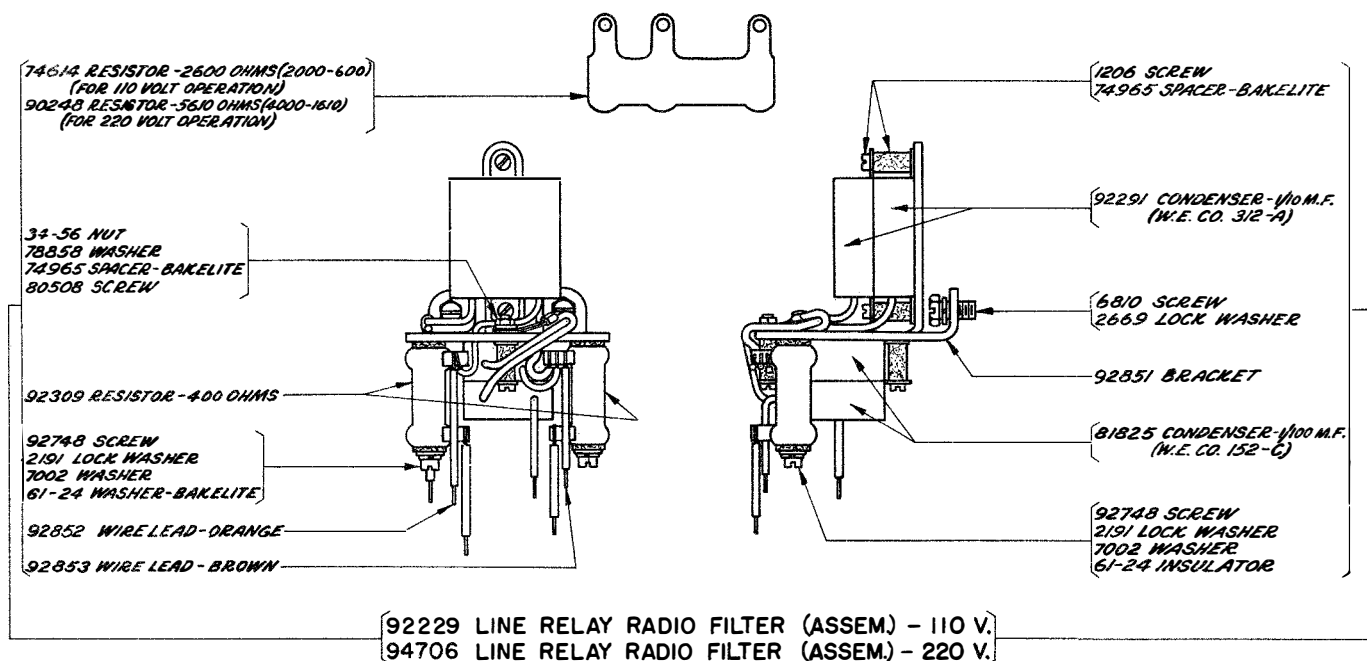
PUNCH UNIT - TOP VIEW

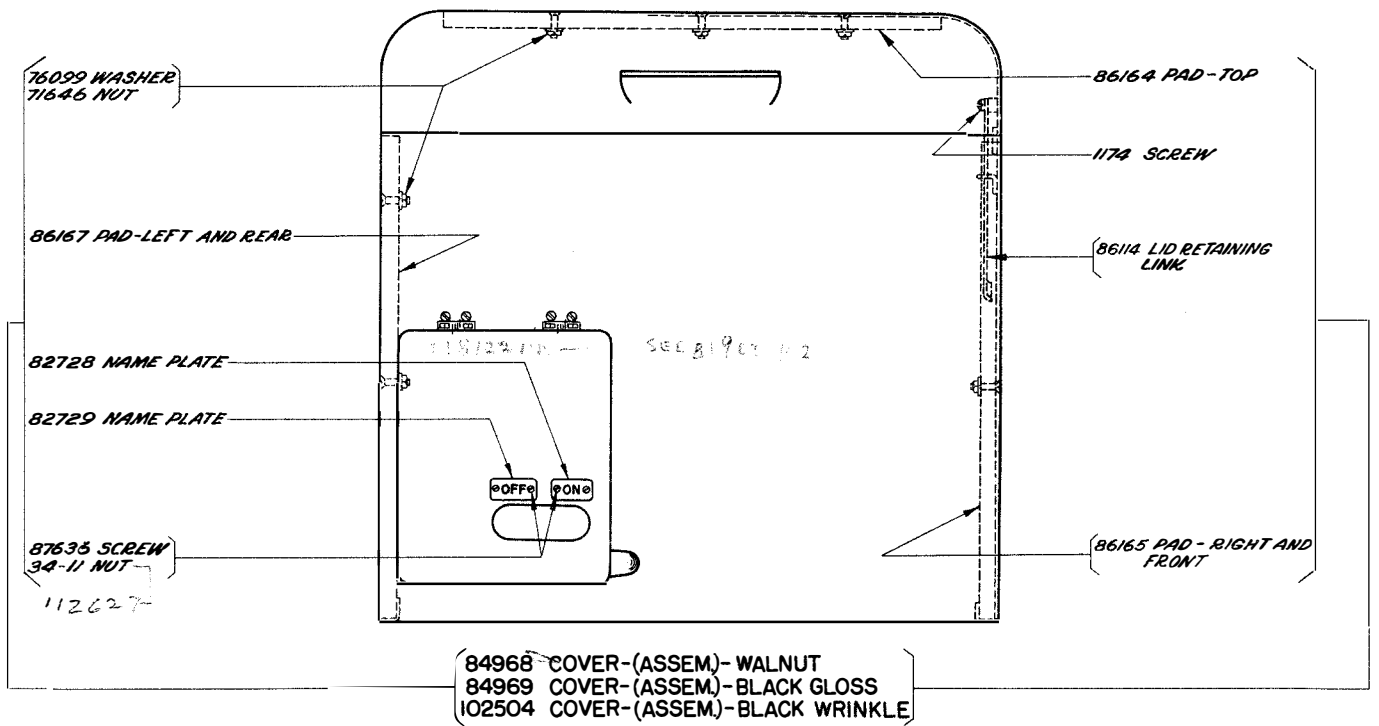
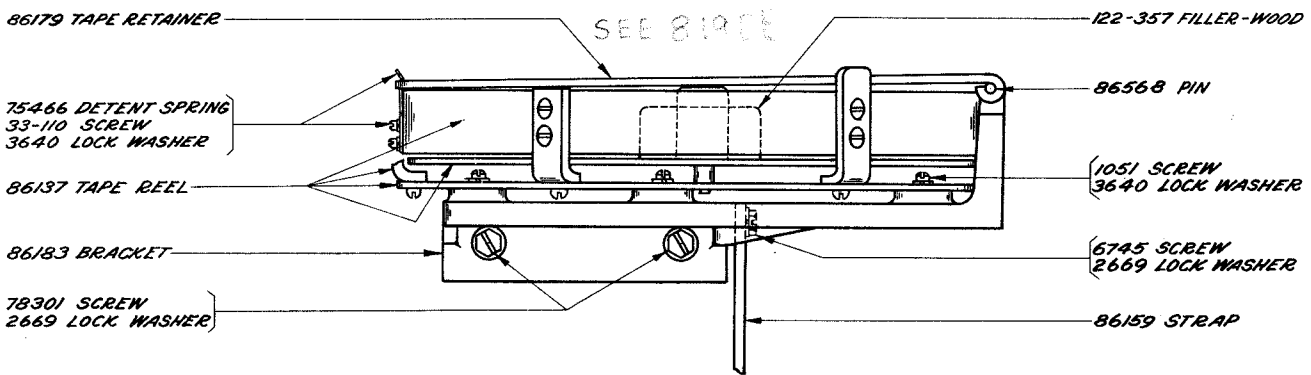
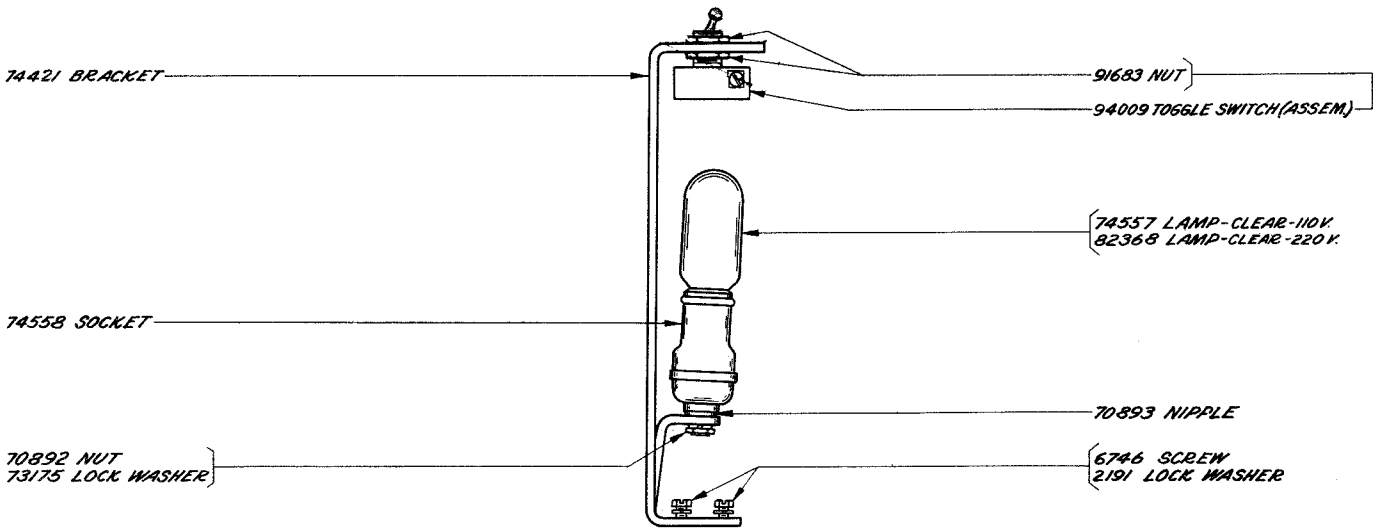


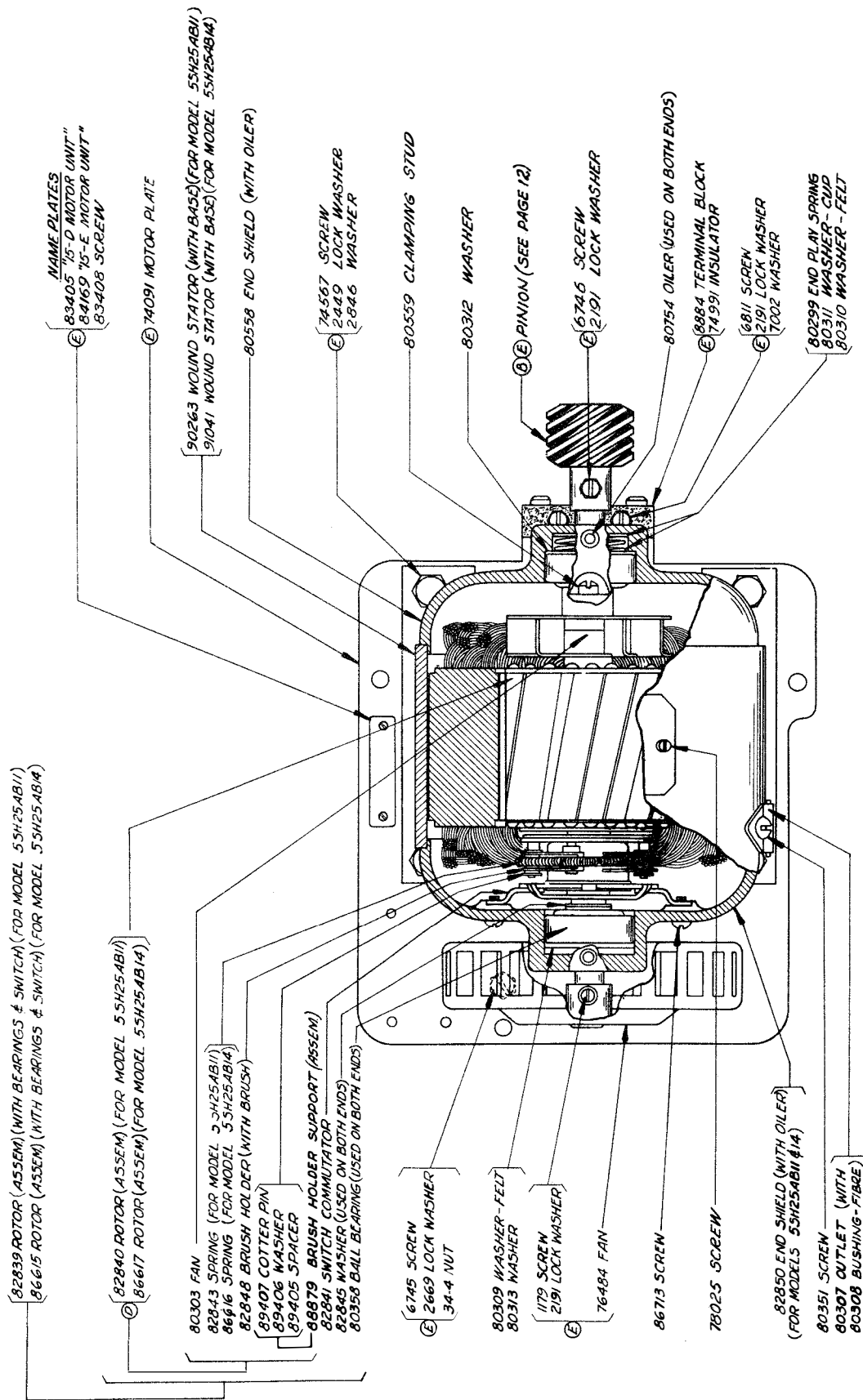
PUNCH UNIT - FRONT VIEW

Ⓐ SEE PAGE 13 FOR EXPLANATION

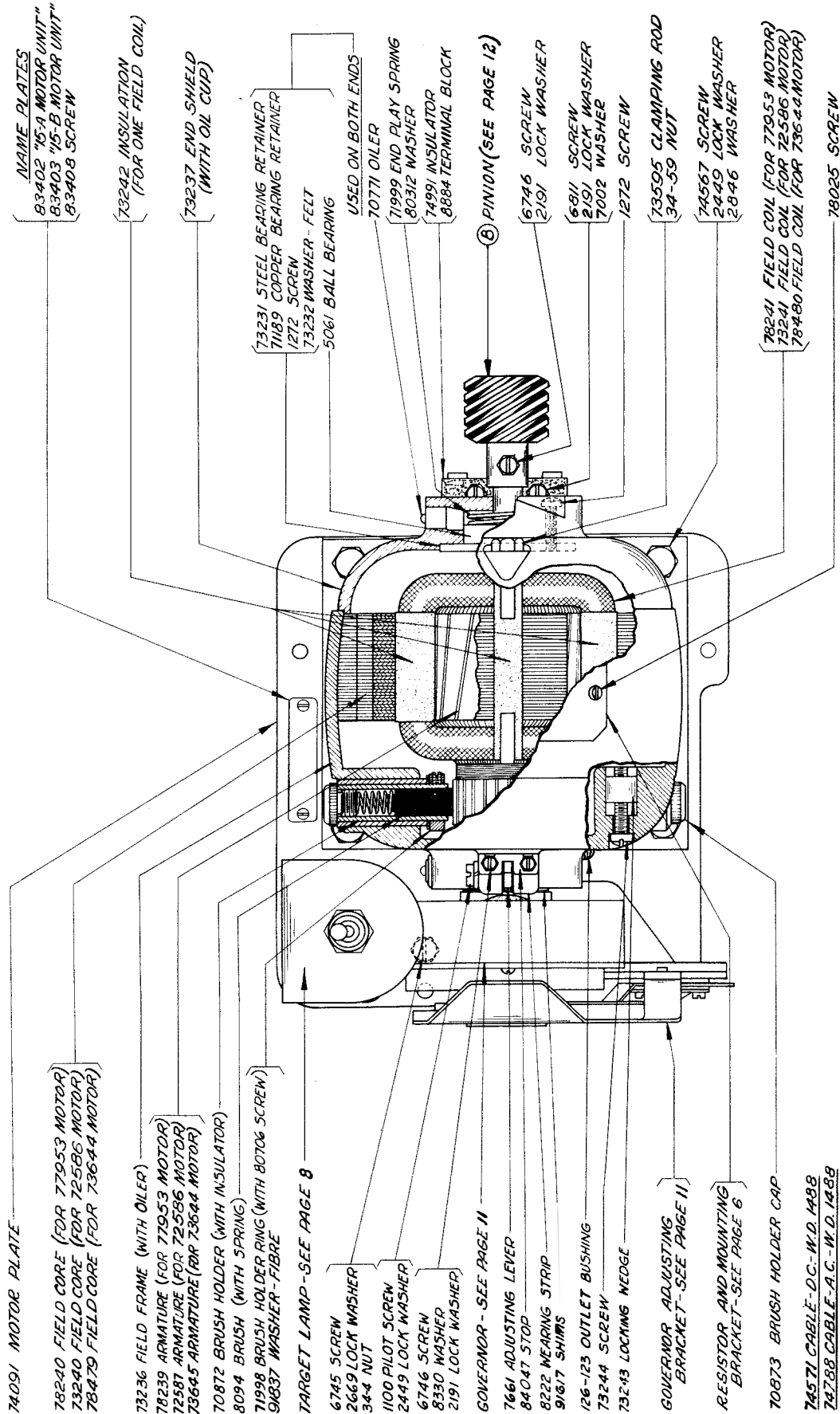








- Ⓐ Ⓒ 82283 SYNCHRONOUS MOTOR 1/40 H.P., 110 V., 60 CYCLE A.C. (G. E. MODEL 55H25AB11) - EXCLUDES PARTS MARKED Ⓔ
- 80439 SYNCHRONOUS MOTOR UNIT (ASSEM.) - (BELL SYSTEM 15-D) - EXCLUDES PARTS MARKED Ⓔ
- Ⓐ 82714 SYNCHRONOUS MOTOR 1/40 H.P., 110 V., 50 CYCLE A.C. (G. E. MODEL 55H25AB14) - EXCLUDES PARTS MARKED Ⓔ
- 84901 SYNCHRONOUS MOTOR UNIT (ASSEM.) - (BELL SYSTEM 15-E) - EXCLUDES PARTS MARKED Ⓔ

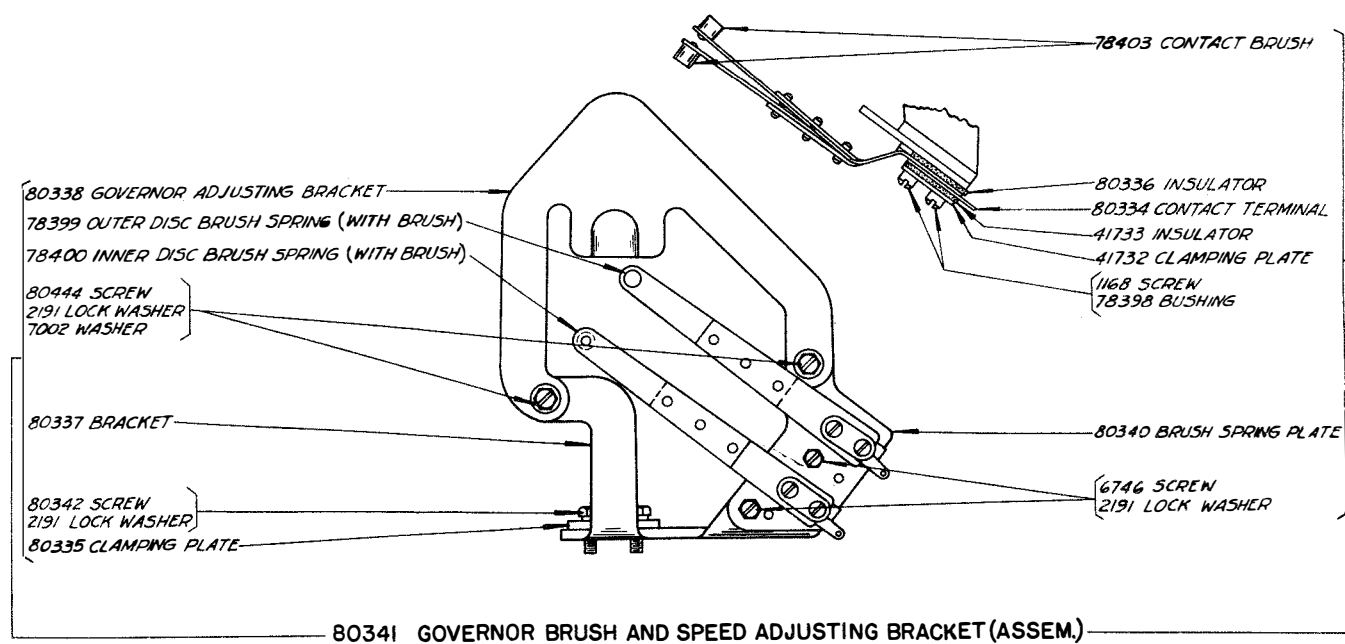
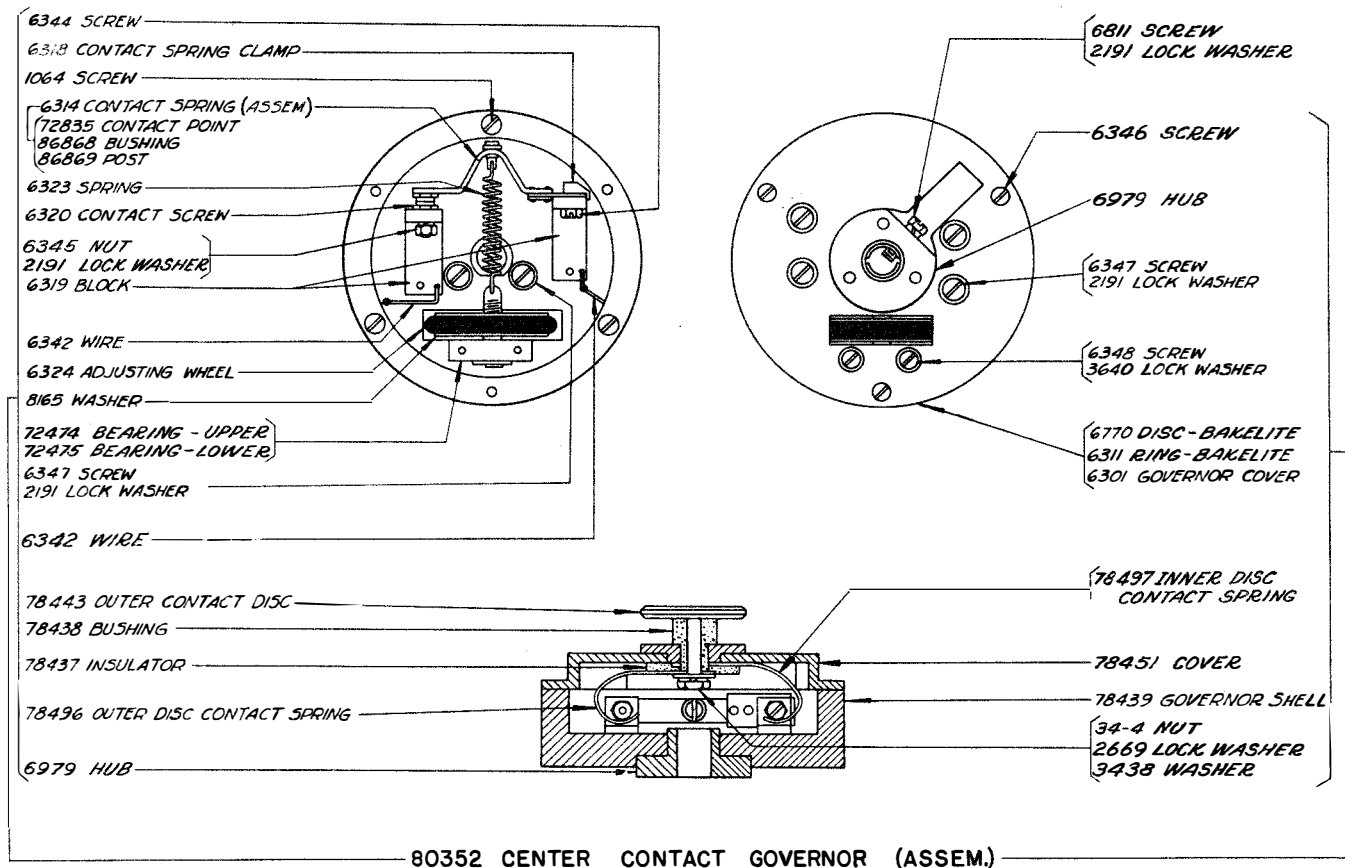


Ⓐ 77953 MOTOR 1/25 H.P., 110 V., 60 CYCLE A.C. (G.E. MODEL 32989 OR 5BA65AA29)
74839 MOTOR UNIT (ASSEM.) - (BELL SYSTEM 15-A) USING 77953 MOTOR

Ⓐ 72586 MOTOR 1/17 H.P., 110 V., D.C. (G.E. MODEL 31531)
74840 MOTOR UNIT (ASSEM.) - (BELL SYSTEM 15-B)
RESISTOR WITH MOUNTING (SEE PAGE 6)

73644 MOTOR 1/17 H.P., 220 V., D.C. (G.E. MODEL 33373)
82298 MOTOR UNIT (ASSEM.) - USING 73644 MOTOR

Ⓐ Ⓑ SEE PAGE 13 FOR EXPLANATION



GEAR AND MOTOR PINION COMBINATIONS
USED WITH A.C., D.C. GOVERNED AND SYNCHRONOUS MOTORS
FOR MODEL 14 (5 UNIT) AND MODEL 20 (6 UNIT) REPERFORATORS

Set Number	Bell System Type	Gear Number	Teeth	Pinion Number	Teeth	Operations per Minute	Words Per Minute	Target Number	Spots	Tuning Fork Number	Vibrations Per Second	Type of Motor
FOR 14 TYPE (5 UNIT) REPERFORATORS												
90267	14-A	78509	30	78510	7	368	61	-	-	-	-	110 V. 60 Cycle - Syn.
90268	14-B	80578	46	80577	7	240	40	-	-	-	-	110 V. 60 Cycle - Syn.
90269	14-C	73106	35	71974	7	368	61	7105	10	72634	87.6	110 V. A.C. or D.C. - Gov.
90269	14-C	73106	35	71974	7	240	40	72665	23	72634	87.6	110 V. D.C. - Gov.
90270	14-D	71971	35	71972	5	240	40	7106	11	72634	87.6	110 V. A.C. - Gov.
90269	-	73106	35	71974	7	335	56	7106	11	72634	87.6	110 V. A.C. or D.C. - Gov.
92289	14-E	84065	25	84064	7	368	61	-	-	-	-	110 V. 50 Cycle - Syn.
92290	14-F	84063	44	84062	8	240	40	-	-	-	-	110 V. 50 Cycle - Syn.
94265	14-G	88945	24	94267	7	460	77	-	-	-	-	110 V. 60 Cycle - Syn.
90271	14-H	6991	32	7082	8	460	77	7105	10	72634	87.6	110 V. A.C. - Gov.
94839	-	94834	46	94835	10	400	67	7105	10	72634	87.6	110 V. A.C. or D.C. - Gov.
98546	-	98548	47	98547	10	335	56	-	-	-	-	110 V. 60 Cycle - Syn.
FOR 20 TYPE (6 UNIT) REPERFORATORS												
84997	20-A	84996	42	84995	9	386	64	7105	10	72634	87.6	110 V. A.C. - Gov.
90271	20-B	6991	32	7082	8	386	64	-	-	-	-	110 V. 60 Cycle - Syn.
88031	-	88029	34	88030	7	317	53	-	-	-	-	110 V. 60 Cycle - Syn.
90267	-	78509	30	78510	7	388	65	7704	8	82345	120	220 V. D.C. - Gov.
89599	-	89603	40	89602	7	309	51	8425	7	82345	120	110 V. A.C. - Gov.
92891	-	92894	25	84064	7	388	65	-	-	-	-	110 V. 50 Cycle - Syn.
96857	-	96856	30	96855	9	386	64	-	-	-	-	110 V. 50 Cycle - Syn.

NOTES OF EXPLANATION

Page 2

- (A) The 91020 cam sleeve replaces the 86157 cam sleeve on 6 unit machines when the improved mechanical mounting parts (marked (D) on page 3) are used.

Page 3

- (A) The 8157 selector lever - right and 8158 selector lever - left are used on all 5 unit machines and on the 6 unit machines not having the improved mechanical mounting parts (marked (D) on page 3).
- (B) The 91023 selector lever - right and 91022 selector lever - left replace the 8157 selector lever - right and 8158 selector lever - left on 6 unit machines when the improved mechanical mounting parts (marked (D) on page 3) are used.
- (C) The 91636 post (which serves as a guide in the lower slot of the 86123 space-out lever - see page 5) has replaced the 86131 post.
- (D) See notes (A) under pages 2 and 4 and notes (A) and (B) under page 3.

Page 4

- (A) The 90088 trip latch replaces the 6830 trip latch on 6 unit machines when the improved mechanical mounting parts (marked (D) on page 3) are used. The 6830 trip latch, however, is used on all 5 unit machines, and on the 6 unit machines not having the improved mechanical mounting parts.

Page 5

- (A) The 3598 nut, 2191 lock washer, and 123-244 washer replace the 1189 screw and 6987 washer when the 91636 post is used. (See page 3) The 1189 screw and 6987 washer were used with the 86131 post.

Page 9

- (C) G. E. Model 5SH25AB1 (74931) - Superseded by G. E. Model 5SH25AB7 (82622)
G. E. Model 5SH25AB7 (82622) - Superseded by G. E. Model 5SH25AB11 (82283)
- (D) The Rotor for Model 5SH25AB11 (82283) motor is stamped 4290072-G2.
The Rotor for Model 5SH25AB14 (82714) motor is stamped 4290072-G5.

Pages 9 and 10

- (A) Replacement motors for the Bell System should be ordered by the following new numbers which have been assigned to motors equipped with an additional 89946 "Bell System Service" name plate and 91685 name plate mounting screws.

91888	Motor	1/17 H.P., 110V., D.C.	(Instead of 72586)
91890	Motor	1/25 H.P., 110V., 60 cycle A.C. Gov.	(Instead of 77953)
91892	Motor	1/40 H.P., 110V., 60 cycle A.C. Syn.	(Instead of 82283)
91894	Motor	1/40 H.P., 110V., 50 cycle A.C. Syn.	(Instead of 82714)

Note: All motor units (assem.) will retain their present types and numbers but will automatically include the above new motors equipped with "Bell System Service" name plates and screws when furnished to the Bell System.

- (B) No gears or pinions are included in the motors or motor units (assem.)

NUMERICAL INDEX

M-169	Magnet (355 Ohms), 6	3647	Insulator, 6	8539	Screw (5-40 x 1/2), 1, 3, 6
M-177	Magnet (105 Ohms), 3	3650	Washer, 1		Screw (5-40 x 1/4), 1, 5
M-197	Magnet (115 Ohms), 3	3899	Spacer, 6	8543	Line Cord (Assem.), 7
33-15	Screw (2-56 x 1/8), 6	4871	Bolt, 6	8811	Terminal Block, 9, 10
33-43	Screw (2-56 x 3/4), 6	5061	Ball Bearing, 10	8884	Shim, 5
33-110	Screw (4-40 x 3/16), 8	5740	Screw (2-56 x 1/4), 4	8896	Plunger, 6
33-198	Screw (6-40 x 1/4), 3	6301	Governor Cover, 11	9695	Washer, 4
33-296	Screw (5-40 x 7/16), 5	6311	Ring - Bakelite, 11	34432	Foot - Rubber, 1
34-1	Nut (1/4-32 Hex.), 2, 3, 5	6314	Contact Spring (assem.), 11	35503	Spring, 5
34-4	Nut (10-32 Hex.), 2, 3, 5, 7, 9, 10, 11	6318	Contact Spring Clamp, 11	41382	Spring, 5
		6319	Block, 11	41385	Spring, 5
34-11	Nut (2-55 Hex.), 3, 8	6320	Contact Screw - Tungsten, 11	41732	Clamping Plate, 11
34-55	Nut (4-40 Hex.), 3, 4, 7	6323	Spring, 11	41733	Insulator, 11
34-59	Nut (10-30 Hex.), 10	6324	Adjusting Wheel, 11	70497	Nut (5/16-32 Hex.), 2
35-1	Spring, 3	6342	Wire, 11	70707	Bracket, 6
35-99	Spring, 5	6344	Screw (6-32 x 11/32), 11	70724	Insulator Strip, 6
35-116	Spring, 4	6345	Nut (6-32 Hex.), 11	70771	Oiler, 10
43-10	Plunger Stop, 6	6346	Screw (6-32 x 3/4), 11	70803	Screw (6-40 Pivot), 3
61-24	Washer-Bakelite, 7	6347	Screw (6-32 x 3/8), 11	70872	Brush Holder (with Insulator), 10
100-96	Shim, 5	6348	Screw (4-36 x 3/4), 11		Brush Holder Cap, 10
103-27	Washer, 5	6385	Sword, 3	70873	Nut (3/16-24 Hex.), 6
122-60	Star Wheel, 5	6386	"T" Lever, 3	70887	Nut, 8
122-80	Snedder Guide, 4	6389	Separator Plate, 3	70892	Nipple, 8
122-84	Dowel - Lower, 4	6706	Magnet Bracket, 3	70893	Stop Nut, 3
122-86	Dowel - Upper, 4	6745	Screw (10-32 x 1/2), 1, 2, 6, 7, 8, 9, 10	71045	Stop Screw, 3
122-276	Strap, 1		Screw (6-40 x 5/16), 1, 2, 3, 5, 6, 8, 9, 10 to 11	71046	Washer, 3
122-357	Filler - Wood, 8	6746	Disc - Bakelite, 11	71189	Copper Bearing Retainer, 10
122-359	Feed Roll "A", 5		Screw (6-40 Shoulder), 4	71445	Link, 3
	(Advance Feed)	6770	Screw (4-40 Pilot), 4	71646	Nut (6-32 Hex.), 8
122-577	Feed Roll "B", 5	6799	Screw (6-40 Set), 2	71653	Selector Coil (Assem.) (with Solid Core - 5 unit), 3
	(Straight Feed)	6801	Screw (10-32 x 3/8), 1, 7		Range Scale (with Bell Crank Mounting) 5 Unit, 4
122-697	Eccentric, 5	6807	Screw (6-40 Set), 1, 2, 3, 9, 10, 11	71696	Clamping Plate, 4
122-700	Detent Lever, 5	6810	Connecting Block (W.E. co. 18-B), 7		Range Scale (Assem.) - 5 Unit, 4
123-244	Washer, 1, 5, 13	6811	Trip Latch, 13	71897	Gear (3-T), 12
126-123	Outlet Bushing, 10		Magnet Yoke, 3	71829	Motor Pinion (5-T), 12
500-205	Connection Spring, 1	6827	Bell Crank, 4		Motor Pinion (7-T), 12
1026	Screw (6-40 x 3/8), 2, 6	6830	Washer - Felt, 2	71971	Stop Pawl Plate, 4
1028	Screw (4-40 x 1/4), 1, 3, 6	6836	Cam Sleeve Disc, 2	71972	Brush Holder Ring (with 60705 Screw), 10
1030	Screw (5-40 Shoulder), 4	6850	Bracket, 3	71974	End Play Spring, 10
1051	Screw (4-40 x 1/2), 8	6861	Stop Pawl, 4	71976	Resistor - 1000 Ohms (2 used on 72055) (1 used on 82346), 6
1064	Screw (6-32 x 1/4), 11	6863	Screw (Eccentric), 3	71998	Resistor Unit (Assem.) - 220 V., A.C., 6
1073	Screw (6-40 Thumo), 4	6864	Eccentric Stop, 4	72263	Spring Post, 5
1100	Screw (1/4-32 Pilot), 10	6909	Clutch Throwout Lever, 2	72425	Cord (with 82474 Terminals), 7
1109	Screw (10-32 Set), 2	6942	Huc, 11		Bearing - Upper, 11
1160	Screw (6-40 x 5/16), 2, 5,	6966	Washer, 13	72474	Bearing - Lower, 11
1161	Screw (6-40 x 1/4), 1, 5	6971	Screw (1/4-32 Pilot), 2, 3, 5	72475	Plug, 7
1165	Screw (4-36 x 1/4), 1	6979	Worm Gear (32-T), 12	72481	Screw (6-40 x 3/4), 3
1168	Screw (4-40 x 5/16), 11	6987	Spring, 2	72508	Driving Disc, 2
1169	Screw (6-40 x 7/16), 1	6990	Washer, 3	72513	Spring, 2
1174	Screw (4-40 Shoulder), 8	6991	Washer, 1, 2, 3, 5, 6, 7, 9, 10, 11	72514	Nut (5/16-32 Hex.), 2
1179	Screw (6-40 x 5/8), 9	6993	Trip Plunger, 4	72515	Keyed Nut, 2
1182	Screw (6-40 Shoulder), 5, 13	7001	Motor Pinion (8-T), 12	72517	Oil Wick, 2
1206	Screw (4-40 x 9/16), 7	7002	Clamping Plate, 1	72521	Oil Wick, 2
1224	Adjusting Screw, 1	7007	Target (10 Spot), 12	72522	Driving Clutch, 2
1245	Screw (10-32 x 1), 2	7082	Target (11 Spot), 12	72562	Washer - Felt, 2
1257	Screw (10-32 x 1-1/8), 6	7095	Adjusting Screw (Special), 3	72563	Resistor - 200 Ohms (100-100), 6
1268	Screw (1.38-40 x 5/16 Flat Head), 1	7105	Spring, 4	72566	Washer, 2
		7106	Spring, 4		Motor 1/17 H.P., 110 V., D. C., 10, 13
1269	Screw (6-40 x 1/2), 1, 4	7158	Collar, 4	72579	Armature, 10
1272	Screw (6-40 x 11/16), 1, 10	7202	Spring, 3	72586	Tuning Fork, 12
1291	Screw (6-32 x 3/4), 1	7207	Adjusting Lever, 10		Ball Bearing, 2
1297	Screw (6-40 x 2-7/16), 6, 7	7282	Target - 8 Spot, 12	72644	Target (23 Spot), 12
2034	Washer, 3	7287	Oil Wick, 2	72665	Contact Point, 11
2191	Lock Washer, 1 to 11, 13	7288	Strap, 6	72883	Washer - Felt, 2
2438	Washer, 3, 6	7289	Bracket, 6	72884	Friction Disc, 2
2449	Lock Washer, 6, 9, 10	7294	Plug, 7	72999	Power Cord (Assem.), 7
2597	Spacer, 5	7303	Brush (with Spring), 10	73105	Worm Gear (32-T), 12
2639	Lock Washer, 1, 2, 5, 7, 8, 9, 10, 11	7307	Selector Lever - Right, 3, 13	73107	Bushing, 2
		7324	Selector Lever - Left, 3, 13	73175	Lock Washer, 8
2846	Washer, 9, 10	7387	Washer, 11		
3130	Link, 2	7959	Wearing Strip, 10		
3298	Eccentric Stop, 3	8047	Cable Clamp (.964 Long), 1		
3338	Spring Post, 2	8094	Cable Clamp, 1, 6		
3438	Washer, 1, 5, 7, 11	8157	Washer, 3, 10		
3595	Nut (1/4-32 Hex.), 6	8158	Target - 7 Spot, 12		
3598	Nut (6-40 Hex.), 1 to 6, 13	8159	Locking Wedge, 3		
3599	Nut (4-40 Hex.), 5	8222	Locking Lever (with Bushing), 3		
3604	Nut (5/32 x 40 Hex.), 5	8254			
3617	Washer, 6	8308			
3618	Insulator, 6	8330			
3628	Outlet Bushing - Bakelite, 1	8425			
3640	Lock Washer, 3 to 8, 11	8472			
3646	Lock Washer, 5, 7	8511			

NUMERICAL INDEX

73231	Steel Bearing Retainer, 10	78164	Selector Post, 3	61797	Guide and Die Plates (Fitted together) - Upper (5 unit advanced feed), 4
73232	Washer - Felt, 10	78165	Selector Mounting Plate (with Posts), 3	81825	Condenser - 1/100 M.F. (W. E. Co. 152-C), 7
73236	Field Frame (with Oiler), 10	78174	Armature, 3	81841	Condenser - 1/4 M.F., 1
73237	End Shield (with Oil Cup), 10	78180	Retaining Disc, 2	82283	Synchronous Motor 1/40 H.P., 110 V., 60 Cycle A.C. 9, 13
73240	Field Core, 10	78205	Resistor - 300 Ohms (2 used on 78206)(1 used on 82345), 6	82298	Motor Unit (Assem.), 10
73241	Field Coil, 10	78206	Resistor Unit (Assem.) - 110 V., A.C. or D.C., 6	82345	Tuning Fork 120 V.P.S., 12
73242	Insulation, 10	78239	Armature, 10	82346	Resistor Unit (Assem.) - 220 V., D. C., 6
73243	Locking Wedge, 10	78240	Field Core, 10	82368	Lamp - Clear - 220 V., 8
73244	Locking Wedge Screw (10-30 x 7/8), 10	78241	Field Coil, 10	82464	Selector Coil (Assem.) (with laminated core - 6 unit), 3
73357	Terminal End, 6	78301	Screw (10-32 x 5/8), 8	82474	Terminal, 7
73481	Tape Tension Lever, 5	78398	Bushing, 11	82493	Washer, 3
73482	Stud, 5	78399	Outer Disc Brush Spring (with Brush), 11	82515	Connecting Block, 7
73483	Spring, 5	78400	Inner Disc Brush Spring (with Brush), 11	82516	Retaining Clip, 7
73497	Plug, 7	78403	Contact Brush, 11	82622	Motor (G.E. Model 5SH25AB7) 13
73588	Contact Spring, 6	78437	Insulator, 11	82668	Magnet Core, 3
73592	Spring Plate, 6	78438	Bushing, 11	82676	Magnet Bracket, 3
73593	Contact Spring, 6	78439	Governor Snell, 11	82677	Magnet Bracket, 3
73595	Clamping Rod, 10	78443	Outer Contact Disc, 11	82678	Coil Retainer, 3
73644	Motor 1/17 H.P., 220 V., D. C., 10	78451	Cover, 11	82701	Strap (3" Long), 3
73645	Armature, 10	78479	Field Core, 10	82714	Synchronous Motor 1/40 H.P., 110 V., 60 Cycle A.C., 9, 13
73670	Terminal Block (Assem.), 1	78480	Field Coil, 10	82728	Name Plate, 8
74014	Screw (10-32 x 3/4), 1, 2, 5, 7	78496	Outer Disc Contact Spring, 11	82729	Name Plate, 8
74059	Screw (6-40 x 7/32), 5	78497	Inner Disc Contact Spring, 11	82839	Rotor (Assem.)(with Bearings and Switch), 9
74091	Motor Plate, 9, 10	78509	Worm Gear (30-T), 12	82840	Rotor (Assem.)(For Model 5SH25AB11), 9
74399	Screw (6-40 Pilot), 3	78510	Motor Worm (7-T), 12	82841	Switch Commutator, 9
74421	Bracket, 8	78556	Washer, 4	82843	Spring, 9
74502	Driven Clutch, 2	78597	Screw (10-32 Shoulder), 4	82845	Washer, 9
74557	Lamp-Clear - 110 V., 8	78824	Spring, 3	82848	Brush Holder (with Brush), 9
74558	Socket, 8	78826	Mounting Block, 3	82850	End Shield (with Oiler), 9
74567	Screw (1/4-20 x 9/16), 9, 10	78858	Washer, 7	82855	Bracket, 7
74571	Cable - D. C. (W.D. 1483), 10	79513	Clamp Plate, 6	83402	Name Plate "15-A Motor Unit", 10
74614	Resistor - 2600 Ohms (2000-600)(For 110 Volt Operation), 7	80294	Spring Post, 5	83403	Name Plate "15-B Motor Unit", 10
74620	Toggle Switch, 1	80299	End Play Spring, 9	83405	Name Plate "15-D Motor Unit", 9
74719	Relay Base, 7	80303	Fan, 9	83408	Screw (4-40 x 3/16), 9, 10
74722	Washer, 3	80307	Outlet, 9	83920	Top Separator Plate, 3
74757	Guard, 6	80308	Bushing - Fibre, 9	84015	Cable Clamp (1.312 Long), 1
74788	Cable - A.C. (W.D. 1488), 10	80309	Washer - Felt, 9	84047	Stop, 10
74809	Cable Clamp (7/32" Opening), 1	80310	Washer - Felt, 9	84052	Motor Pinion (8-T), 12
74821	Resistor - 2810 Ohms (For 110 Volt Operation)(2000-810), 7	80311	Washer - Cup, 9	84063	Worm Gear (44-T), 12
74839	Motor Unit (Assem.), 10	80312	Washer, 9, 10	84064	Motor Pinion (7-T), 12
74840	Motor Unit (Assem.), 10	80313	Washer, 9	84065	Worm Gear (25-T), 12
74841	Strap (2-5/8" Long), 3	80334	Contact Terminal, 11	84169	Name Plate "15-E Motor Unit", 9
74879	Spring Post, 2	80335	Clamping Plate, 11	84901	Synchronous Motor Unit (Assem.), 9
74931	Motor (G.E. Model 55H25AB1), 13	80336	Insulator, 11	84968	Cover - (Assem.)-Walnut, 8
74965	Spacer - Bakelite, 7	80337	Bracket, 11	84969	Cover - (Assem.)-Black Gloss, 8
74986	Screw (6-40 x 13/32), 1, 3	80338	Governor Adjusting Bracket, 11	84995	Motor Pinion (9-T), 12
74991	Insulator, 9, 10	80340	Brush Spring Plate, 11	84996	Worm Gear (42-T), 12
75120	Wearing Strip (5 or 6 Unit - Advanced Feed), 4	80341	Governor Brush and Speed Adjusting Bracket (Assem.), 11	84997	Set of Reperforator Gears, 12
75121	Shedder, 4	80342	Screw (6-40 x 23/64), 1, 5, 11	85019	Roller, 2
75217	Cord (with 91280 Terminals), 7	80351	Screw (8-36 x 5/16), 9	85020	Screw (10-32 Shoulder), 2
75231	Bushing, 6	80352	Center Contact Governor (Assem.), 11	85023	Adjusting Nut, 2
75436	Resistor - 3000 Ohms (For 110 Volt Operation) (1000-2000), 7	80358	Ball Bearing, 9	85354	Bearing Plate, 5
75466	Detent Spring, 8	80439	Synchronous Motor Unit, (Assem.), 9	85355	Plate, 5
75750	Washer - Bakelite, 7	80444	Screw (6-40 x 1/4), 11	85356	Punch Block (Assem.) - 5 Unit - Advanced Feed, 4
76099	Washer, 1, 2, 8	80508	Screw (4-40 x 25/32), 7	85364	Punch Lever, 5
76237	Cable Clamp (9/32" Opening), 1	80558	End Shield (with Oiler), 9	85371	Punch Hammer, 5
76298	Spring, 2, 5	80559	Clamping Stud, 9	85373	Shaft, 5
76484	Fan, 9	80577	Motor Pinion (7-T), 12	85378	Punch (Large - Code), 4
77953	Motor 1/25 H.P., 110 V., 60 Cycle A.C., 10, 13	80578	Worm Gear (46-T), 12	85471	Screw (10-32 x 1/2), 2
77983	Punch (Small-Feed), 4	80754	Oiler, 9		
77984	Guide Plate - Lower - (5 Unit - Straight Feed), 4	81511	Guide and Die Plates (Fitted together) - Upper - (5 Unit advanced feed), 4		
77986	Wearing Strip (5 Unit - Straight Feed), 4	81514	Guide Plate - Lower - (5 or 6 unit - advanced feed), 4		
78011	Condenser - 1 M.F., 6	81515	Punch Holder, 4		
78025	Screw (4-48 x 3/16), 9, 10	81598	Fed Roll Bushing, 5		
78163	Post, 3	81599	Eccentric Bushing, 5		
		81638	Collar, 5		
		81793	Guide and Die Plates (Fitted together) - Upper - (5 unit straight feed), 4		

NUMERICAL INDEX

85779	Clamping Plate, 5	86183	Bracket, 8	91024	Detent Lever Bracket, 3
86109	Lock Bail, 5	86184	Frame, 2	91025	Armature Detent, 3
86111	Collar, 2	86186	Base - Black Gloss, 1	91026	Screw (4-40 Shoulder), 3
86112	Block, 1	86189	Bearing Cap, 2	91041	Wound Stator (with Base), 9
86113	Punch Block (Assem.) - 5 Unit - Straight Feed, 4	86273	Spring, 5	91280	Terminal, 7
86114	Lid Retaining Link, 8	86558	Pin, 8	91617	Shim, 10
86117	Transfer Lever #5 Front, 5	86615	Rotor (Assem.)(with Bearings and Switch), 9	91636	Post, 3, 13
86118	Transfer Lever #4, 5	86616	Spring, 9	91683	Nut (15/32-38 Hex.), 8
86119	Transfer Lever #3, 5	86617	Rotor (Assem.), 9	91685	Screw (4-48 x 1/4), 13
86120	Transfer Lever #2, 5	86712	Spring, 2	91787	Resistor - 8000 Ohms (4000-4000), 7
86121	Transfer Lever #1, 5	86713	Screw (4-48 x 5/16), 9	91837	Washer - Fibre, 10
86122	Transfer Lever #0, Rear, 5	86721	Coale (Line), 1	91853	Mounting Plate, 6
86123	Space-out Lever, 5, 13	86736	Plate, 3	91854	Cable (Power)(W.D.-1650), 1
86124	Feed Pawl, 5	86865	Chad Chute, 5	91855	Cable (Line)(W.D.-1650), 1
86127	Spacer-Short, 5	86868	Bushing, 11	91888	Motor 1/17 H.P., 110 V., D.C., 13
86128	Spacer - Long, 5	86869	Post, 11	91890	Motor 1/25 H.P., 110 V., A.C. 60 Cycle, 13
86129	Hub, 2	86872	Stop Plate, 3	91892	Motor 1/40 H.P., 110 V., 60 Cycle Synchronous, 13
86130	Hub, 2	87603	Tape Knife, 5	91894	Motor 1/40 H.P., 110 V., 50 Cycle Synchronous, 13
86131	Post, 13	87636	Screw (2-56 x 3/16), 8	92229	Line Relay Radio Filter (Assem.) - 11C V., 7
86132	Bearing, 2	87851	Bushing - Fibre, 1	92289	Set of Reperforator Gears (14-E), 12
86133	Slip Connection (Assem.), 1	88029	Worm Gear (34-T), 12	92290	Set of Reperforator Gears (14-F), 12
86134	Range Scale (Assem.) - 6 Unit, 4	88030	Motor Pinion (7-T), 12	92291	Condenser 1/10 M.F. (W.E. Co. 312-A), 7
86136	Roller Arm (with Rollers), 5	88031	Set of Gears for 317 O.P.M. using 1800 R.P.M. Synchronous motor, 12	92309	Resistor - 400 Ohms, 7
86137	Tape Reel, 8	88879	Brush Holder Support (Assem.), 9	92596	Cable (Line)(W.D.-1691), 1
86138	Bracket, 6	88945	Worm Gear (24-T), 12	92748	Screw (6-40 x 1-7/16), 7
86140	Tape Guide - 6 Unit, 5	89405	Spacer, 9	92851	Bracket, 7
86143	Tape Guide - 5 Unit, 5	89406	Washer, 9	92852	Wire Lead - Orange, 7
86144	Switch Cover, 1	89407	Cotter Pin, 9	92853	Wire Lead - Brown, 7
86146	Chad Drawer, 1	89548	Contact Spring, 7	92891	Set of Reperforator Gears, 12
86148	Chad Chute, 2	89599	Set of Reperforator Gears, 12	92894	Worm Gear (25-T), 12
86149	Bracket, 1	89602	Motor Pinion (7-T), 12	94009	Toggle Switch (Assem.), 8
86150	Tape Guide Spring, 5	89603	Gear (40-T), 12	94265	Set of Reperforator Gears (460 O.P.M.), 12
86153	Bracket, 1, 7	89946	Name Plate - "Bell System Service", 13	94267	Motor Pinion (7-T), 12
86154	Range Scale (with Bell Crank Mounting) 5 Unit, 4	89969	Washer - Bakelite, 6, 7	94706	Line Relay Radio Filter (Assem.) - 220 V., 7
86155	Eccentric Shaft, 5	89991	Control Relay (Assem.), 6	94834	Gear (40-T), 12
86156	Eccentric Bushing, 5	90088	Trip Latch, 4, 13	94835	Motor Pinion (10-T), 12
86157	Cam Sleeve, 13	90246	Resistor - 6000 Ohms (4000-2000), 7	94839	Set of Reperforator Gears, 12
86158	Cam Sleeve - 5 Unit, 2	90247	Resistor - 3400 Ohms (2000-1400), 7	96855	Motor Pinion (9-T), 12
86159	Strap, 2, 8	90248	Resistor - 5610 Ohms (4000-1610), 7	96856	Gear (30-T), 12
86160	Shaft, 2	90263	Wound Stator (with Base), 9	96857	Set of Reperforator Gears, 12
86164	Pad - Top, 8	90267	Set of Reperforator Gears (14-A), 12	97472	Punch Block (Assem.) - 5 Unit Advanced Feed, 4
86165	Pad - Right and Front, 8	90268	Set of Reperforator Gears (14-B), 12	98546	Set of Reperforator Gears, 12
86166	Pad - Felt, 1	90269	Set of Reperforator Gears (14-C), 12	98547	Motor Pinion, (10-T), 12
86167	Pad - Left and Rear, 8	90270	Set of Reperforator Gears (14-D), 12	98548	Gear (47-T), 12
86168	Stop Post, 5	90271	Set of Reperforator Gears (20-B), 12	99817	Foot-Bress, 1
86169	Post, 2	90791	Lock Washer, 3	102504	Cover (Assem.) - Black Wrinkle, 8
86170	Stud, 5	91020	Cam Sleeve - 6 Unit, 2, 13		
86171	Shaft, 2	91022	Selector Lever - Left, 3, 13		
86172	Punch Arm, 2	91023	Selector Lever - Right, 3, 13		
86174	Punch Lever Cam, 2				
86175	Chad Drawer Guide, 1				
86176	Base Plate, 1				
86177	Punch Bracket, 5				
86178	Tape Baffle Plate, 5				
86179	Tape Retainer, 8				
86181	Cable (Power)(W.D.-1488, 1489, 1650, 1691, 1778, 1				
86182	Cable (Line)(W.D.-1488, 1650, 1778), 1				

CHANGES IN PARTS BULLETINS

1052 (Issue 1)
1064 (Issue 1)
1067 (Issue 2)

1080 (Issue 1)
1082 (Issue 2)
1088 (Issue 2)

1090 (Issue 2)
1108 (Issue 1)
1117 (Issue 2)

On the perforators, reperfors, perforator transmitters and reperfors transmitters referred to in the above bulletins, the 122-577 feed roll (straight feed hole) has been replaced by a 110682 feed roll (straight feed hole).

The 122-359 feed roll (advance feed hole) has been replaced by a 110683 feed roll (advance feed hole).

The new feed rolls are designed to eliminate the use of the 81598 bushing.

110682 is equivalent to 122-577 plus 81598

110683 is equivalent to 122-359 plus 81598

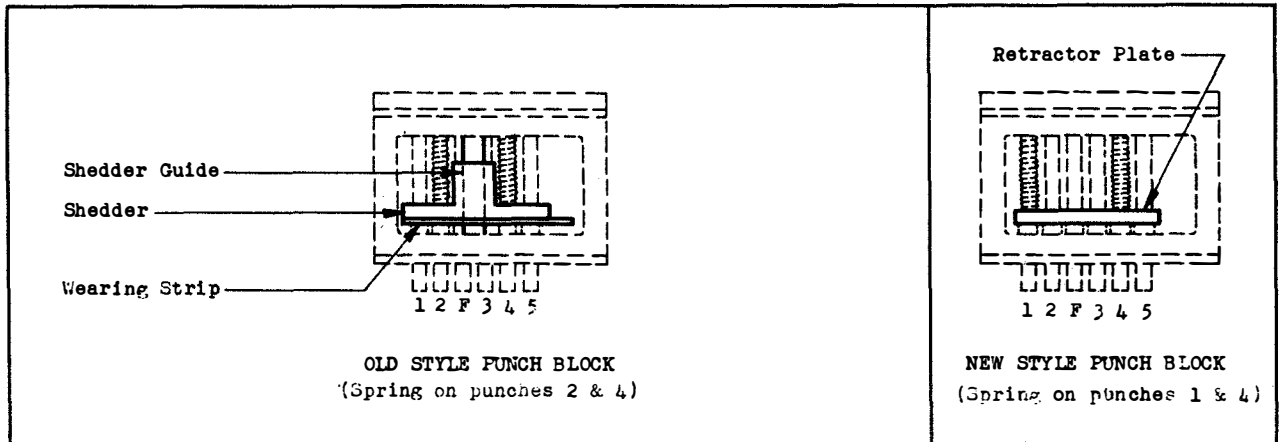
CHANGES AND ADDITIONS
TO PARTS BULLETINS

1001	Issue 1	1067	Issue 2	1090	Issue 2
1012	Issue 2	1080	Issue 1	1093	Issue 1
1038	Issue 2	1082	Issue 2	1100	Issue 2
1052	Issue 1	1088	Issue 2	1117	Issue 2
1064	Issue 2	1089	Issue 1		

The punch block assemblies shown in the above bulletins have been redesigned and assigned new assembly numbers. Old style punch block assemblies are no longer furnished. On orders for old style blocks, new style assemblies which are fully interchangeable with the old style will be furnished.

The sketches below illustrate the difference between the old and new style assemblies, and it should be noted that the shedder and wearing strip are replaced by a retractor plate, and the shedder guides are not used. The shedder and wearing strip are no longer being furnished. When it is desired to replace a shedder or wearing strip, a retractor plate should be ordered instead.

The chart below may be used to determine the new style punch block assembly number which replaces an old style, and which retractor plate must be ordered to replace the old style shedder, and/or wearing strip.



Old Style Assembly Number	Apparatus Used On	Type of Punch Block			Shedder	Wearing Strip	New Style Assembly Number	Retractor Plate
		Number of Code Punch Holes	Type of Feed Hole	Grinding on Punches				
122-384	Perf. & nontyp. Reperf. (5 mag.)	5	Advanced	Cup Ground	122-367	122-368	112640	110902
122-575	Perf. & nontyp. Reperf. (5 mag.)	5	Straight	Cup Ground	122-367	122-574	111019	110901
77987	Perforator	6	Straight	Cup Ground	75121	77986	112642	110903
81510	Perforator	6	Advanced	Cup Ground	75121	75120	112643	110904
81792	Perf. Trans.	5	Straight	Cup Ground	75121	77986	111020	110901
85356	Nontyp. Reperf.	6	Advanced	V Notch	75121	75120	112645	110904
86113	Nontyp. Reperf.	5	Straight	V Notch	75121	77986	111021	110901
89504	Perf. Trans.	5	Straight	Cup Ground	75121	77986	111022	110901
91114	Perf. Trans.	5	Advanced	Cup Ground	75121	75120	112646	110902
94904	Perforator	7	Advanced	Cup Ground	94948	94950	112647	110905
95451	Typ. Reperf.	5	Straight	Cup Ground	122-367	122-574	111023	110901
97472	Nontyp. Reperf.	5	Advanced	V Notch	75121	75120	112648	110902
102790	Typ. Reperf.	5	Straight	Cup Ground	122-367	122-574	111024	110901
104573	Typ. Reperf.	5	Advanced	Cup Ground	122-367	122-368	112649	110902

Teletype Corporation
Chicago, Illinois, U.S.A.

EE-533
Issue 1
January, 1946

CHANGES AND ADDITIONS
BULLETIN NO. 1064 (ISSUE 2)
PARTS - SINGLE MAGNET REPERFORATOR
(Model 14 and 20 Nontyping)

This correction sheet covers ordering information for the C182 cover (assem.) - gray wrinkle, which is the same as the C81 (84968) cover (assem.) - walnut (Bell System 14A) shown on page 8 of the bulletin except for the finish.

The four screw heads (two at each hinge) shown at the top of the cover door are incorrectly shown and should not be visible, as they are welded to the inside of the cover. The washers, lock washers, and nuts used with these screws may be ordered as 103-27 washers, 3640 lock washer, and 34-66 nuts.

The spring, used on the hinge to keep the door closed, may be ordered as 74637 spring.

CHANGES AND ADDITIONS
TO PARTS BULLETINS
SHOWN BELOW

In order to facilitate identification of selector cam sleeve assemblies they are stamped with identifying letters. The chart below shows the cam sleeve assembly numbers and identifying letters.

BULLETIN NUMBER	TYPE OF APPARATUS	CAM SLEEVE ASSEMBLY NUMBER	STAMPED WITH LETTERS
1028 Issue 2 1030 Issue 2 1031 Issue 3 1048 Issue 2	Type Bar Tape Printer (Model 14)	*8507	CX
1082 Issue 2 1088 Issue 2 1100 Issue 2 1117 Issue 2	Typing Reperforator (Model 14)	*8507 **91265 RE PLACED BY 122754	CX MX M
1108 Issue 1 1126 Issue 1	Reperforator Transmitter (Model 14)	↑ **91265	MX
1130 Issue 1	Multiple Reperforator (MRPE)	**111506	QX
1083 Issue 1 1107 Issue 1	Non-Typing Selector (Model 14)	↑ **91265	MX
1072 Issue 2	Regenerator Unit & Panel (RED)	**90010	HX
1121 Issue 1	Multiplex Extensor Unit (AME)	**103891	PX
1064 Issue 2 1080 Issue 1	Reperforator	Model 14 *86158 Model 20 *91020	GX LX
(A) 1037 Issue 4 (B) 1063 Issue 2 1094 Issue 2 1110 Issue 2 (A) 1114 Issue 1	Type Bar Page Printer	Model 15 ↑ *8507 **91265 Model 20 *91019	CX MX KX
1073 Issue 1	Type Wheel Page Printer (Model 24)	**90493	JX
1074 Issue 2	Type Wheel Page Printer (Model 26)	**92954	NX

- (A) In Bulletins 1037 and 1114, Page 3, the stamping for the 8507 and 91265 cam sleeve assemblies should read "CX" and "MX" respectively.
 (B) In Bulletin 1063, top of Page 27, the stamping for the 91019 should read "KX".
 * For use with "Pulling Magnet Selectors".
 ** For use with "Holding Magnet Selectors".

CHANGES AND ADDITIONS
TO THE FOLLOWING PARTS BULLETINS

1028	1064	1095	1107	1122	1133
1030	1072	1096	1108	1123	1137
1031	1079	1101	1109	1125	1141
1036	1080	1102	1110	1126	1143
1041	1082	1103	1116	1127	1144
1048	1083	1104	1117	1130	1145
1051	1084	1105	1119	1131	
1063	1087	1106	1120	1132	

Correction Sheet 650EE Issue 1 which covers parts ordering information for Teletype standard motors, center contact governors, governor brushes, and speed adjusting brackets associated with apparatus cataloged in the bulletins listed above, has been revised and reissued as Bulletin 1147B. Where any of the bulletins listed above refer to Correction Sheet 650EE, use Bulletin 1147B instead.

ADDITION TO PARTS BULLETINS
LISTED BELOW

1028 (Issue 2)	1080 (Issue 1)	1114 (Issue 1)
1039 (Issue 2)	1082 (Issue 2)	1116 (Issue 1)
1031 (Issue 3)	1083 (Issue 1)	1117 (Issue 2)
1037 (Issue 4)	1088 (Issue 2)	1121 (Issue 1)
1063 (Issue 2)	1094 (Issue 2)	1126 (Issue 1)
1064 (Issue 2)	1100 (Issue 2)	1130 (Issue 1)
1072 (Issue 2)	1107 (Issue 1)	1141 (Issue 1)
1073 (Issue 1)	1108 (Issue 2)	1142 (Issue 1)
1074 (Issue 2)	1110 (Issue 2)	1143 (Issue 1)

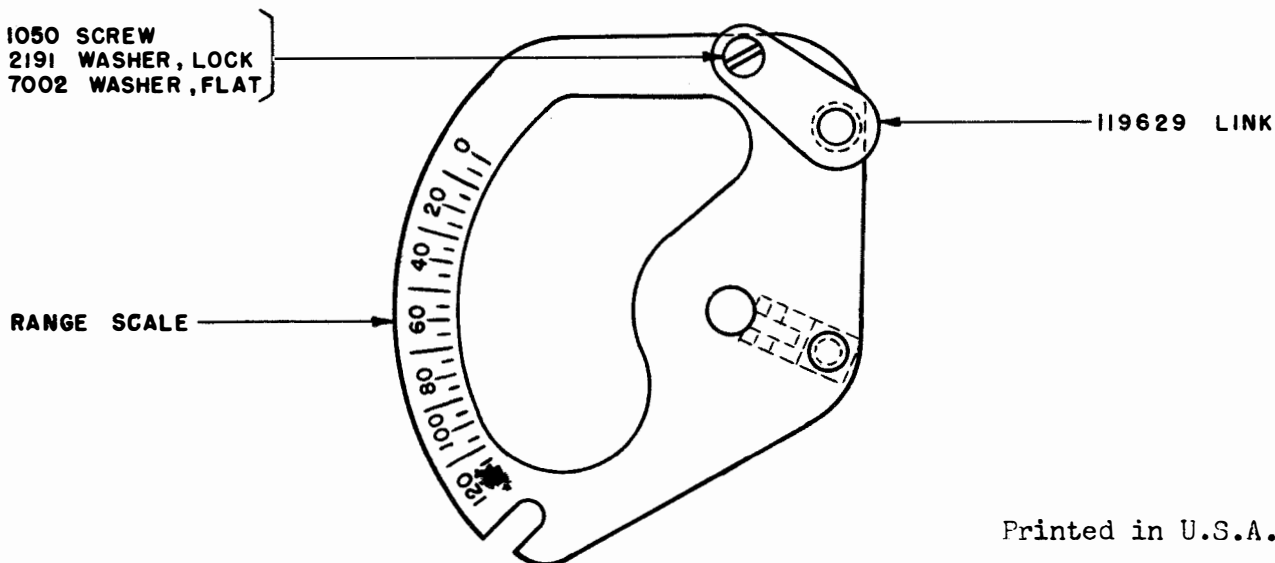
This correction sheet covers parts ordering information for the Adjustable Range Scale assembly. This assembly includes an adjusting link that mounts on the 90775 modified range scale to allow regulation of the engagement between the stop arm on the selection cam sleeve and the stop lever on the range scale assembly.

In the bulletins listed above, and in connection with each range scale assembly shown (71696, 83562, 86154, 90086, 90775, or 90776 depending on the unit), add the following parts:

119629 Link
1050 Screw
2191 Lock Washer
7002 Washer

The part numbers of the other equipment in the assembly are unchanged. The Adjustable Range Scale Assembly replaces the previous Range Scale Assembly, and orders for the old part numbers will be filled accordingly.

The two assemblies are interchangeable on the printer. Due to the modifications in the range scale, however, it is necessary to order a complete assembly to convert existing apparatus.



CHANGES IN TELETYPE
PART AND ASSEMBLY NUMBERS

In order to facilitate the use of automatic business machines in the conduct of its business, Teletype Corporation finds it necessary to eliminate all of its present part and assembly numbers containing dashes and/or letter prefixes. Such numbers have been replaced by others having 3 to 6 digits which may have a one-letter or a two-letter suffix.

The prefixes used with magnet, packing material, raw material such as wire in bulk, Teletype literature and wiring diagram numbers have been changed to suffixes, and in the case of bulletins and instruction manuals a suffix has been added to identify the items without reference to descriptions as shown in the following illustrations:

<u>Old Designation</u>	<u>New Designation</u>	<u>Description</u>
M121	121M	Magnet
PK10718	10718PK	Carton
RM31571	31571RM	Wire
121	121B	Bulletin
EE121	121EE	Correction Sheet
121	121MA	Instruction Manual
WD2186	2186WD	Wiring Diagram
S5037	5037S	Specification
S5333A	5333SA	Specification
S5333B	5333SB	Specification

All Teletype parts bulletins and price lists will eventually be changed to show the new as well as the old numbers for the convenience of Teletype Corporation customers.

When an item is ordered under an old number, the new number will be substituted for the old one and the old number will be shown immediately after the description of the items on all shipping papers and invoices.

Attached are two conversion lists of the active numbers involved; one with the old numbers and descriptions arranged numerically and the other with the new numbers arranged numerically. It is to be noted that some of the new numbers have already been used in Teletype parts catalogs.

Many numbers containing dashes cover parts considered obsolete and are not included in the attached lists. Occasionally one of these parts is reinstated, in which case the part will be shipped under the new number with the dash number shown immediately after the description. It is not intended to add such numbers to the correction sheet lists unless the part is to be commonly used.

OLD TO NEW NUMBER CONVERSION LIST

Old No.	New No.	Description	Old No.	New No.	Description	Old No.	New No.	Description
2-3	125100	Washer	33-88	125140	Screw	33-257	125193	Screw
4-4	125101	Stud	33-89	125141	Screw	33-264	125194	Screw
4-8	74879	Stud	33-98	125142	Screw	33-267	125182	Screw
4-11	125102	Stud	33-101	125143	Screw	33-270	87636	Screw
6-1	125103	Thumb Wheel	33-108	125144	Screw	33-271	125195	Screw
6-2	125104	Sleeve	33-110	110434	Screw	33-272	125004	Screw
23-8	125105	Terminal	33-111	49054	Screw	33-274	125196	Screw
25-21	125106	Stud	33-114	125146	Screw	33-275	126250	Spring
26-19	125107	Dowel	33-121	125147	Screw	33-276	125197	Screw
33-1	1157	Screw	33-123	125148	Screw	33-278	125199	Screw
33-2	125108	Screw	33-130	125149	Screw	33-280	125005	Screw
33-3	1158	Screw	33-132	125001	Screw	33-282	125200	Screw
33-4	1263	Screw	33-135	125150	Screw	33-283	125201	Screw
33-5	1159	Screw	33-141	125151	Screw	33-285	125202	Screw
33-6	1160	Screw	33-143	125152	Screw	33-289	125203	Screw
33-7	1161	Screw	33-151	125153	Screw	33-290	1299	Screw
33-8	125109	Screw	33-153	125154	Screw	33-296	125205	Screw
33-9	125110	Screw	33-156	1162	Screw	33-311	110742	Screw
33-10	1162	Screw	33-157	1174	Screw	33-333	125006	Screw
33-11	1163	Screw	33-158	125155	Screw	33-334	112622	Screw
33-12	125111	Screw	33-162	125156	Screw	33-335	112623	Screw
33-13	5740	Screw	33-163	125157	Screw	33-336	125206	Screw
33-14	1164	Screw	33-167	125158	Screw	33-337	112624	Screw
33-15	125112	Screw	33-168	125159	Screw	33-339	125207	Screw
33-16	1165	Screw	33-169	1175	Screw	33-340	125208	Screw
33-17	1166	Screw	33-170	112621	Screw	33-341	125209	Screw
33-18	125113	Screw	33-175	125160	Screw	33-344	125211	Screw
33-19	1167	Screw	33-176	125161	Screw	33-346	125212	Screw
33-21	112620	Screw	33-179	125002	Screw	33-347	112625	Screw
33-22	125114	Screw	33-180	125162	Screw	33-348	125213	Screw
33-23	125115	Screw	33-185	125163	Screw	33-349	125214	Screw
33-29	125116	Screw	33-193	125164	Screw	33-350	125215	Screw
33-32	125117	Screw	33-194	125165	Screw	33-356	125216	Screw
33-35	1168	Screw	33-195	1176	Screw	33-360	1181	Screw
33-36	125118	Screw	33-196	125166	Screw	33-362	125217	Screw
33-37	1169	Screw	33-197	125167	Screw	34-1	125218	Nut
33-38	125119	Screw	33-198	125168	Screw	34-2	3595	Nut
33-39	1222	Screw	33-202	125169	Screw	34-3	125219	Nut
33-41	125120	Screw	33-206	125003	Screw	34-4	112626	Nut
33-42	125121	Screw	33-207	125170	Screw	34-5	5475	Nut
33-43	125122	Screw	33-208	125171	Screw	34-6	3597	Nut
33-45	125123	Screw	33-209	125172	Screw	34-7	70073	Nut
33-49	1170	Screw	33-210	125173	Screw	34-8	3598	Nut
33-50	125124	Screw	33-211	125174	Screw	34-9	3599	Nut
33-51	125125	Screw	33-212	125175	Screw	34-10	125220	Nut
33-53	1171	Screw	33-213	125176	Screw	34-11	112627	Nut
33-54	1172	Screw	33-217	125177	Screw	34-12	55257	Nut
33-57	125126	Screw	33-224	125178	Screw	34-13	125221	Nut
33-58	125127	Screw	33-225	125179	Screw	34-14	5815	Nut
33-59	125128	Screw	33-227	125180	Screw	34-16	125222	Nut
33-60	125129	Screw	33-228	125181	Screw	34-19	125223	Nut
33-63	125130	Screw	33-234	1177	Screw	34-24	125224	Nut
33-64	1173	Screw	33-235	125183	Screw	34-25	3600	Nut
33-65	125131	Screw	33-236	125184	Screw	34-27	125225	Nut
33-69	1223	Screw	33-237	1178	Screw	34-28	3602	Nut
33-70	125132	Screw	33-238	1179	Screw	34-29	3603	Nut
33-72	125133	Screw	33-240	86850	Screw	34-35	125226	Nut
33-73	125134	Screw	33-241	125185	Screw	34-39	125227	Nut
33-74	125000	Screw	33-244	125186	Screw	34-41	125228	Nut
33-75	125135	Screw	33-245	125187	Bolt	34-48	125229	Nut
33-78	110741	Screw	33-250	125188	Screw	34-50	3604	Nut
33-79	125136	Screw	33-252	125189	Screw	34-51	1036	Nut
33-82	125137	Screw	33-253	125190	Screw	34-53	3605	Nut
33-85	125138	Screw	33-254	125191	Screw	34-54	125230	Nut
33-86	125139	Screw	33-255	125192	Screw	34-55	3606	Nut

Old No.	New No.	Description	Old No.	New No.	Description	Old No.	New No.	Description
34-56	110435	Nut	36-38	125275	Pin	100-79	125327	Screw
34-58	125231	Nut	36-39	125276	Pin	100-80	125328	Bushing
34-59	125009	Nut	36-45	125277	Pin	100-81	125329	Bushing
34-60	125232	Nut	36-51	125278	Pin	100-84	125330	Screw
34-61	125233	Nut	36-56	3614	Pin	100-85	3621	Terminal
34-62	125234	Nut	36-72	125279	Pin	100-88	9574	Screw
34-63	2723	Nut	36-73	125280	Pin	100-92	125331	Bushing
34-64	112628	Nut	36-80	125281	Pin	100-93	125332	Terminal
34-66	125235	Nut	36-85	125282	Pin	100-96	110441	Shim
35-1	112629	Spring	36-103	125283	Pin	100-97	3623	Washer
35-2	112630	Spring	36-104	125284	Pin	100-100	125333	Pole Piece
35-8	112631	Spring	36-105	125285	Rivet	100-101	125334	Pole Piece
35-13	125236	Spring	36-106	125286	Pin	100-106	125335	Spring
35-16	125237	Spring	36-109	125287	Pin	100-108	3624	Washer
35-23	125238	Spring	36-110	125288	Pin	100-109	125336	Spring Assem.
35-24	125239	Spring	36-113	125289	Pin	100-110	125337	Spring
35-26	125240	Spring	36-114	125290	Pin	100-111	125338	Spring
35-27	125241	Spring	36-120	125269	Pin	100-112	125339	Terminal
35-28	125242	Spring	36-124	125291	Pin	100-113	125340	Eyelet
35-33	112632	Spring	36-131	125092	Dowel	100-120	125341	Bushing
35-34	125243	Spring	36-132	125292	Pin	100-145	125343	Strip
35-40	125244	Spring	36-134	125293	Pin	100-148	125344	Terminal
35-42	110436	Spring	36-136	125294	Pin	100-151	125345	Spool
35-43	125245	Spring	36-137	3614	Pin	100-152	125346	Screw
35-47	125246	Spring	36-139	125295	Pin	100-153	125347	Screw
35-48	125247	Spring	36-146	110439	Pin	100-159	125348	Terminal
35-52	4702	Spring	36-147	125296	Pin	100-167	125349	Terminal
35-53	125248	Spring	36-150	125297	Pin	100-173	125350	Contact Point
35-54	112633	Spring	36-151	125298	Pin	100-178	125351	Terminal Block
35-58	3608	Spring	36-152	3615	Pin	100-179	125352	Terminal
35-66	125249	Spring	36-153	110440	Pin	100-187	125353	Terminal
35-68	125250	Spring	36-154	125299	Pin	100-188	125354	Terminal Block
35-69	125251	Spring	36-164	125300	Pin	100-217	125355	Relay Spool
35-70	110437	Spring	36-165	125301	Pin	100-218	125356	Terminal
35-71	125252	Spring	36-170	125302	Pin	100-219	125357	Terminal
35-72	125253	Spring	36-172	125303	Pin	100-220	125358	Terminal
35-78	125254	Spring	36-173	3616	Pin	100-227	125359	Washer
35-80	125255	Spring	36-174	125304	Rivet	100-228	125360	Washer
35-84	125256	Spring	43-10	125306	Stop	100-234	125361	Washer
35-85	125257	Spring	43-12	71047	Washer	100-235	125362	Washer
35-86	4703	Spring	46-3	125307	Washer	100-246	125363	Screw
35-87	4708	Spring	47-2	125308	Buffer Assem.	100-253	125364	Spring
35-88	110438	Spring	47-4	125309	Buffer	100-254	125365	Spring
35-89	112634	Spring	47-5	125310	Screw	100-255	125366	Bushing
35-99	125258	Spring	52-4	125099	Washer	100-256	125367	Washer
35-101	125259	Spring	52-5	125311	Buffer	100-257	125368	Washer
35-104	125260	Spring	54-3	125312	Washer	103-27	125011	Washer
35-111	125261	Spring	61-7	3618	Insulator	103-75	125369	Resistor
35-116	125262	Spring	61-9	125313	Washer	103-77	125370	Resistor
35-123	125263	Spring	61-10	125314	Screw	103-102	125371	Screw
35-124	125264	Spring	61-12	125315	Washer	103-151	125372	Pinion
35-125	125265	Spring	61-21	125316	Screw	112-7	125373	Screw
35-126	3610	Spring	61-24	125010	Washer	112-8	125374	Screw
35-129	3611	Spring	61-25	125317	Insulator	112-64	125375	Screw
35-131	125266	Spring	80-1	125318	Tube	120-20	125376	Washer
35-132	125267	Spring	80-2	125319	Terminal	122-5	125379	Post
35-133	125268	Spring	80-3	125320	Washer	122-11	125380	Chute
35-134	4705	Spring	80-4	125321	Pole Piece	122-12	125381	Stud
35-137	112635	Spring	80-5	125322	Magnet Core	122-18	125382	Cable
35-140	112636	Spring	100-70	125323	Magnet Core	S-122-19	125383	Bracket
36-19	125270	Pin	100-71	125324	Magnet Core	S-122-20	125384	Bracket
36-23	125271	Pin	100-72	125325	Terminal	S-122-21	125385	Bracket
36-24	125272	Pin	100-73	125326	Washer	S-122-22	125386	Bracket
36-28	125273	Pin	100-74	5816	Washer	S-122-23	125387	Bracket
36-35	125274	Pin	100-75	3620	Washer	S-122-24	125388	Bracket

Old No.	New No.	Description	Old No.	New No.	Description	Old No.	New No.	Description
122-25	125389	Bracket	122-133	125450	Post	122-381	125505	Lever
122-26	125390	Washer	S-122-134	125451	Bell Crank	122-382	125506	Bail
122-27	125391	Shaft	122-135	125452	Washer	122-383	125507	Key Lever
122-28	125392	Stop	S-122-136	125453	Bracket	122-384	112640	Die Block
122-29	125393	Pin	122-137	125454	Gear Assem.	122-386	125508	Bail Assem.
122-35	125394	Plate	122-139	125455	Pin	122-387	125509	Cover
122-36	125395	Pin	122-140	125456	Stud	122-388	125510	Hinge
S-122-37	125396	Guide	122-143	125457	Connector	122-389	125511	Pawl Assem.
S-122-38	125397	Bar	122-146	125458	Bearing	122-390	125512	Contact Assem.
S-122-39	3625	Shaft	122-147	125459	Bushing	122-392	125509BC	Cover
S-122-40	125398	Bracket	W-122-152	125798	Key Assem.	122-396	125514	Hammer Assem.
122-41	125399	Roller	122-192	125461	Cup	122-397	125515	Hinge
122-42	125400	Gear	122-193	125462	Washer	122-399	125516	"Blank" Comb
122-43	125401	Gear	122-194	125463	Disk	122-400	125517	Comb
122-46	125402	Post	122-195	125464	Disk	122-401	125518	Comb
122-48	125012	Socket	122-196	125465	Bezel	122-402	125519	Comb
122-49	125403	Fitting	S-122-234	3627	Bar	122-403	125520	Comb
122-50	125404	Lamp	122-241	125466	Roller	122-404	125521	Comb
122-51	125405	Bell Crank	122-242	125467	Lever Assem.	122-405	125522	Comb
122-52	125406	Bell Crank	122-244	125468	Post	122-406	125523	Comb
122-53	125407	Bell Crank	122-245	125469	Pawl	122-407	125524	Comb
122-54	125408	Bell Crank	122-246	125470	Post	122-408	125525	Comb
122-55	125409	Bell Crank	122-247	125471	Disk Assem.	122-409	125526	Comb
122-56	125410	Bushings	122-249	125472	Stud	122-410	125527	Comb
122-57	125411	Bushings	122-250	125473	Spool Assem.	122-411	125528	Comb
122-58	125412	Stud	122-251	125474	Tube	122-412	125529	Comb
122-60	125413	Ratchet	122-252	125475	Terminal End	122-413	125530	Comb
122-61	125414	Post	122-253	125476	Magnet Spool	122-414	125531	Comb
122-62	125415	Pin	122-254	125477	Core	122-415	125532	Comb
122-63	125416	Post	122-257	125478	Plunger	122-416	125533	Comb
122-65	125417	Stud	122-259	125479	Disk	122-417	125534	Comb
122-67	125418	Post	122-260	125480	Hub	122-418	125535	Comb
122-68	3626	Foot	122-275	125481	Bracket	122-419	125536	Comb
S-122-69	125419	Stop	122-276	125013	Plate	122-420	125537	Comb
122-80	125420	Guide	122-290	125482	Terminal End	122-421	125538	Comb
122-84	125421	Pin	122-337	125014	Washer	122-422	125539	Comb
122-86	125422	Pin	122-345	119959BC	Container Assem.	122-423	125540	Comb
122-88	125423	Solenoid Assem.	122-346	125484	Plate	122-424	125541	Comb
122-89	125424	Bracket	122-347	125485	Guard	122-425	125542	Comb
122-94	125425	Terminal Board	122-348	126247	Bracket	122-426	125543	Comb
122-95	125426	Insulator	122-349	125486	Pivot	122-427	125544	Comb
122-97	125427	Bushing	122-350	125487	Tape Reel	122-428	125545	Comb
122-100	125428	Plate	122-352	80520BC	Cover	122-429	125546	Comb
122-101	125429	Head	122-354	126248	Shelf	122-430	125547	Comb
122-102	125430	Post	122-355	126249	Bracket	122-431	125548	Paper Keypop
122-106	125431G	Bracket Assem.	122-356	80523BC	Cover	122-432	125549	Paper Keypop
122-106G	125432	Bracket Assem.	122-357	125488	Spacer	122-433	125550	Paper Keypop
122-107	125433	Bracket	122-358	125489	Bracket	122-434	125551	Paper Keypop
122-108	125434	Bushing	122-359	125490	Ratchet	122-435	125552	Paper Keypop
122-111	125435	Screw	122-363	125491	Pin	122-436	125553	Stud
122-112	125436	Strip	122-364	125492	Bracket	122-437	125554	Spring
122-113	9575	Screw	122-365	125493	Punch Pin	122-438	125555	Head
122-115	125437	Contact Point	122-366	125494	Punch Pin	122-439	125556	Spring Eye
122-116	125438	Lever Assem.	122-367)	110902	Plate	122-444	119960BC	Plate
122-117	125439	Lever	122-368)			122-445	119957	Guard Assem.
122-118	125440	Terminal	122-369	125495	Guide Plate	122-447	125558	Spring
122-119	125441	Contact Assem.	122-370	125496	Guide Plate	122-450	125559	Keys
122-120	125442	Spring	122-371	125497	Die Plate	122-451	125560	Lever Assem.
122-121	125443	Contact	122-373	125498	Punch Hammer	122-452	125561	Lever Assem.
122-124	125444	Spring	122-374	125499	Punch Bar	122-453	125562	Cable Assem.
122-126	125445	Insulator	122-375	125500	Punch Bar	122-454	125563	Cable
122-127	125446	Stud	122-376	125501	Punch Bar	122-457	125564	Loop Blank
122-128	125447	Bracket Assem.	122-377	125502	Punch Bar	122-459	125565	Paper Keypop
122-129	125448	Bracket	122-378	125503	Punch Bar	122-460	125566	Paper Keypop
S-122-130	125449	Lever Assem.	122-380	125504	Lever	122-461	125567	Paper Keypop

Old No.	New No.	Description	Old No.	New No.	Description	Old No.	New No.	Description
122-462	125568	Paper Keytop	122-567	125631	Hammer Assem.	122-708	125693	Paper Keytop
122-463	125569	Paper Keytop	122-570	120499BC	Base	122-709	125694	Paper Keytop
122-464	125570	Paper Keytop	122-571	125633	Guide Plate	122-710	125605	Paper Keytop
122-465	125571	Paper Keytop	122-572	125634	Guide Plate	123-7	3628	Bushing
122-466	125572	Paper Keytop	122-573	125635	Die Plate	123-8	71444	Bushing
122-467	125573	Paper Keytop	122-574)	110901	Plate	123-10	3629	Collar
122-468	125574	Paper Keytop	122-367)			123-36	3630	Bushing
122-469	125575	Paper Keytop	122-575	111019	Block	123-37	125696	Post
122-470	125576	Paper Keytop	122-576	125636	Plate Assem.	123-55	125697	Contact Pin
122-471	125577	Paper Keytop	122-577	125637	Ratchet Assem.	123-123	125698	Roller
122-472	125578	Paper Keytop	122-580	125638	Paper Keytop	123-135	125699	Pin
122-473	125579	Paper Keytop	122-581	125639	Paper Keytop	123-154	125700	Hub
122-474	125580	Paper Keytop	122-582	125640	Paper Keytop	123-158	125701	Hub
122-475	125581	Paper Keytop	122-583	125641	Bushing	123-159	125702	Dowel
122-476	125582	Paper Keytop	122-586	125642	Bracket Assem.	123-163	3632	Terminal
122-477	125583	Paper Keytop	122-589	125643	Washer	123-164	3633	Bushing
122-478	125584	Paper Keytop	122-590	125644	Handle	123-165	3634	Bushing
122-479	125585	Paper Keytop	122-592	125645	Guide	123-166	3635	Washer
122-480	125586	Paper Keytop	122-593	125646	Plate	123-167	3636	Washer
122-481	125587	Paper Keytop	122-594	125647	Plate	123-194	3637	Ball Bearing
122-482	125588	Paper Keytop	122-596	125648	Key Lever	123-244	125015	Washer
122-483	125589	Paper Keytop	122-597	125649	Key Lever	123-308	125703	Terminal
122-484	125590	Paper Keytop	122-598	125650	Key Lever	123-314	125704	Rivet
122-485	125591	Paper Keytop	122-599	125651	Key Lever	123-342	125705	Oil Cup
122-487	125592	Paper Keytop	122-600	125652	Key Lever	123-343	125706	Wick
122-490	119957BC	Guard	122-601	125653	Key Lever	123-357	125707	Terminal
122-498	125510	Hinge	122-602	125654	Key Lever	123-362	125708	Washer
122-511	125594	Guide Assem.	122-603	125655	Key Lever	123-364	125709	Hinge-Butt
122-526	125595	Roller	122-604	125656	Key Lever	123-412	125710	Ring - Blank
122-528	125596	Key Lever Assem.	122-605	125657	Key Lever	123-447	125711	Disk
122-529	125597	Key Lever Assem.	122-606	125658	Key Lever	125-9	3638	Condenser
122-530	125598	Key Lever Assem.	122-607	125659	Key Lever	125-23	125712	Clamp
122-531	125599	Key Lever Assem.	122-608	125660	Key Lever	125-55	125713	Card Holder
122-532	125600	Key Lever Assem.	122-609	125661	Key Lever	125-161	125714	Resistor
122-533	125601	Key Lever Assem.	122-610	125662	Key Lever	125-169	125715	Fuse
122-534	125602	Key Lever Assem.	122-611	125663	Key Lever	125-176	125716	Switch Box
122-535	125603	Key Lever Assem.	122-612	125664	Key Lever	125-184	125717	Fuse Box
122-536	125604	Key Lever Assem.	122-613	125665	Key Lever	125-194	125718	Resistor
122-537	125605	Key Lever Assem.	122-614	125666	Key Lever	125-197	125097	Nipple
122-538	125606	Key Lever Assem.	122-615	125667	Key Lever	125-198	125098	Nut
122-539	125607	Key Lever Assem.	122-616	125668	Key Lever	125-208	125719	Nipple
122-540	125608	Key Lever Assem.	122-617	125669	Key Lever	125-209	125720	Nut
122-541	125609	Key Lever Assem.	122-618	125670	Key Lever	125-211	125721	Clamp
122-542	125610	Key Lever Assem.	122-619	125671	Key Lever	125-217	126253	Receptacle
122-543	125611	Key Lever Assem.	122-620	125672	Key Lever	125-221	125091	Receptacle
122-544	125612	Key Lever Assem.	122-621	125673	Key Lever	125-237	125723	Fuse
122-545	125613	Key Lever Assem.	122-622	125674	Key Lever	125-238	125724	Fuse
122-546	125614	Key Lever Assem.	122-623	125675	Key Lever	125-239	125725	Fuse
122-547	125615	Key Lever Assem.	122-624	125676	Key Lever	125-240	125483	Key
122-548	125616	Key Lever Assem.	122-625	125677	Key Lever	125-242	125726	Resistor
122-549	125617	Key Lever Assem.	122-626	125678	Key Lever	125-269	125727	Handle
122-550	125618	Key Lever Assem.	122-627	125679	Key Lever	125-270	125728	Hinge
122-551	125619	Key Lever Assem.	122-628	125680	Key Lever	125-276	125729	Switch Box
122-552	125620	Key Lever Assem.	122-629	125681	Key Lever	126-11	125730	Bushing
122-553	125621	Key Lever Assem.	122-630	125682	Comb	F-126-24	125377	Pinion
122-554	125622	Key Lever Assem.	122-697	125683	Bushing	126-64	125731	Cam
122-555	125623	Key Lever Assem.	122-698	125684	Lever Assem.	126-92	125732	Washer
122-556	125624	Key Lever Assem.	122-699	125685	Stud	126-93	125733	Washer
122-557	125198	Key Lever Assem.	122-700	125686	Lever Assem.	126-95	125734	Armature
122-558	125625	Key Lever Assem.	122-702	125687	Bushing	126-107	125735	Screw
122-559	125626	Key Lever Assem.	122-703	125688	Bracket Assem.	126-108	125736	Brush Holder
122-562	84695	Guard	122-704	125689	Paper Keytop	126-111	125737	Coil
122-563	125628	Guard Clip	122-705	125690	Paper Keytop	126-114	125738	Washer
122-564	125629	Guard Clip	122-706	125691	Paper Keytop	126-118	125739	Bushing
122-565	125630	Guard	122-707	125692	Paper Keytop	126-123	125016	Grommet

Old No.	New No.	Description	Old No.	New No.	Description	Old No.	New No.	Description
126-126	125740	Brush	200-1132	125792	Insulator	300-177	125854	Terminal
126-127	125741	Spring	200-1134	125793	Pin	300-178	125855	Terminal
138-1	125742	Tuning Fork	200-1135	9576	Contact Spring	300-179	125856	Terminal Block
138-2	125743	Tuning Fork	200-1136	125794	Spring Blank	300-180	125857	Terminal Block
138-3	125744	Tuning Fork	200-1137	9577	Spring	300-181	125858	Feed Pawl
138-4	125745	Tuning Fork	200-1138	125795	Spring Blank	300-200	125859	Bracket
138-5	114756	Tuning Fork	200-1139	3647	Insulator	300-201	125860	End Bracket
138-6	125747	Tuning Fork	200-1175	125796	Spring	300-301	5556	Top Plate
138-7	125748	Tuning Fork	200-1176	125797	Spring	300-302	125861	Feed Wheel
138-11	125749	Tuning Fork	200-1177	126251	Insulator	300-303	125862	Bearing
138-20	125751	Tuning Fork	200-1178	125799	Spring	300-304	125863	Bracket
138-22	110442	Screw Driver	200-1179	125800	Stiff	300-306	125864	Plate
138-23	125752	Wrench	200-1345	125801	Valve	300-307	125865	Plate
138-24	125753	Wrench	200-1348	125802	Washer	300-308	125866	Strip
138-25	125754	Wrench	200-1703	125803	Hub	300-312	125867	Bracket
138-26	125755	Wrench	200-2002	125804	Strip	300-314	125868	Detent Assem.
138-27	125756	Wrench	200-2210	125805	Post	300-315	125869	Detent Lever
138-28	125757	Wrench	200-2212	3649	Washer	300-316	125870	Detent Roller
138-30	125758	File	200-2217	125806	Post	300-319	125871	Bracket
138-32	125759	Wrench	200-2800	125807	Spindle	300-320	125872	Shaft
138-33	125760	Wrench	200-2802	125808	Pivot	300-322	125873	Latch
138-34	125761	Wrench	300-3	125809	Cable	300-400	125874	End Bracket
138-35	125762	Wrench	300-103	125810	Armature	300-501	125875	Base
138-36	125763	Wrench	300-104	125812	Armature	300-502	125876	Switch
138-38	125764	Screw Driver Blade	300-105	125813	Bearing	300-503	125877	Strip
138-43	126242	Gauge	300-106	125814	Guide	300-504	125878	Terminal
138-44	126243	Gauge	300-107	125815	Contact Assem.	300-505	4706	Washer
138-49	126244	Gauge	300-108	125816	Mounting Bar	300-506	4707	Washer
138-52	125765	Wrench	300-109	125817	Mounting Bar	300-507	125879	Base
138-55	110443	Scale	300-110	125818	Insulator	300-508	125880	Armature
138-58	110444	Scale	300-111	125819	Plate	300-509	125881	Washer
138-67	125766	Handle	300-113	125820	Disk	300-510	125882	Terminal
138-68	125767	Shank	300-114	125821	Lever Blank	300-511	125883	Armature
138-69	125768	Shank	300-115	125822	Lever #1	300-512	125884	Spring
138-74	125769	Shank	300-116	125823	Lever #2	300-513	125885	Armature Handle
138-100	88993	Burnisher	300-117	125824	Lever #3	300-515	125886	Terminal
138-119	125771	Handle	300-118	125825	Lever #4	300-516	125887	Base
138-120	125772	Shank	300-119	125826	Lever #5	300-517	125888	Decalcomania
138-122	125773	Handle	300-120	125827	Lever	300-518	125889	Base
138-123	125774	Shank	300-121	125828	Shaft	300-519	125890	Armature
138-125	126245	Gauge	300-128	125829	Lever	300-601	125891	Bracket
138-126	126246	Gauge	300-130	125830	Armature	300-602	125892	Shaft
138-127	125775	Wrench	300-131	125831	Cont. Spring	300-603	125893	Shaft
138-128	125776	Wrench	300-132	125832	Cont. Spring	300-604	125894	Lever
138-129	125777	Wrench	300-137	125833	Lever Guide	300-605	125895	Bracket
138-130	125778	Shank	300-138	125834	Spool	300-606	125896	Shaft
138-133	125779	Wrench	300-139	125935	Tube	300-607	125897	Bracket
138-134	125780	Handle	300-140	125836	Magnet Core	300-608	125898	Pawl
138-135	125781	Shank	300-142	125837	Magnet Yoke	300-609	125899	Post
138-136	125782	Wrench Grip	300-143	125838	Plunger	300-700	125900	Panel
138-137	110445	Tool	300-144	125839	Bracket	300-701	125557	Panel
138-139	125783	Stone	300-145	125840	Rod	300-702	125901	Stud
138-141	114758	Tuning Fork	300-146	125841	Lever	400-2	125902	Rod
200-20	3639	Washer	300-147	125842	Button	400-3	125903	Brush
200-133	125785	Spring	300-150	125843	Plate	400-6	125904	Lamp
200-137	125786	Spring	300-152	125844	Adj. Lever	400-102	125905	Strip
200-139	125787	Button	300-153	125845	Yoke	400-203	125906	Gear
200-148	125788	Post	300-154	125846	Cont. Point	400-206	125907	Washer
200-153	3640	Washer	300-155	125847	Plate	400-207	125908	Pinion
200-214	125789	Shim	300-170	125848	Cont. Lever	400-209	125909	Shaft
200-704	3642	Washer	300-171	125849	Cont. Lever	400-210	125910	Shaft
200-705	125790	Bushing	300-172	125850	Cont. Lever	400-211	125911	Wheel
200-1028	125791	Washer	300-173	125851	Cont. Lever	400-212	125912	Segment Ring
200-1031	6033	Washer	300-174	125852	Cont. Lever	400-215	125913	Collector Ring
200-1032	3646	Washer	300-175	125853	Cont. Lever	400-218	125914	Terminal

Old No.	New No.	Description	Old No.	New No.	Description	Old No.	New No.	Description
400-221	125915	Disk	700-68	73202	Washer	55083-12	126107	"T" Bar
400-222	125916	Range Scale	700-71	3650	Washer	55083-13	126108	"T" Bar
400-302	125917	Bushing	700-75	125750	Screw	55083-14	126109	"T" Bar
400-402	125918	Bushing	700-76	125770	Terminal	55083-15	126110	"T" Bar
400-509	125342	Sleeve	1000-203	125923	Washer	55083-16	126111	"T" Bar
400-510	125210	Shaft	1000-252	110446	Nut	55083-17	126112	"T" Bar
400-513	125919	Washer	W-1098	70793	Spacer	55083-18	126113	"T" Bar
400-519	125920	Sleeve	W-1238	126234	Pin	55083-20	126114	"T" Bar
400-801	125921	Gear	W-1241	126235	Collar	55083-21	126115	"T" Bar
400-1002	125922	Decalcomania	W-1958	71681	Spool	55084-A2	126156	Bar
400-1404	125924	Lever	W-2328	72669	Clip	55084-A4	126157	Bar
500-4	125925	Switch	W-2657	126236	Spring	55084-A6	126158	Bar
500-6	125926	Connector	W-6095	84990	Screw	55084-A8	126159	Bar
500-7	125927	Locknut	W-6104	126237	Nut	55084-A10	126160	Bar
500-19	125928	Washer	W-9277	126238	Handle	55084-A12	126161	Bar
500-80	125929	Resistor	W-9278	126239	Journal	55084-A14	126162	Bar
500-96	125930	Washer	W-9279-A	126240	Crank	55084-A16	126163	Bar
500-99	125931	Switch	W-9337-F	89883	Nut	55084-A18	126164	Bar
500-104	125932	Spring	W-9470	86341	Screw	55084-A20	126165	Bar
500-105	125933	Plate	W-9542	74878	Paper Drag	55084-B1	126166	Bar
500-112	125934	Spring	W-10074	110743	Washer	55084-B3	126167	Bar
500-205	125935	Spring	W-10076	3646	Washer	55084-B5	126168	Bar
500-308	125936	Pin	W-10077	45815	Washer	55084-B7	126169	Bar
500-309	125937	Pin	W-10080	3640	Washer	55084-B9	126170	Bar
500-310	125938	Chain	W-10082	4814	Washer	55084-B11	126171	Bar
500-311	125939	Pin "S" Hook	W-10083	3639	Washer	55084-B13	126172	Bar
500-403	125940	Block	W-10086	126241	Washer	55084-B15	126173	Bar
500-404	125941	Socket	W-10088	70071	Washer	55084-B17	126174	Bar
500-406	125942	Fuse	W-10090	70072	Washer	74274-1	126232	Button
500-600	125943	Box	55083-1	126096	"T" Bar			
500-703	125944	Foot	55083-2	126097	"T" Bar			
500-1008	125945	Switch	55083-3	126098	"T" Bar			
W-666	126233	Pivot	55083-4	126099	"T" Bar			
W-667	74877	Spring	55083-5	126100	"T" Bar			
W-669	117313	Spindle	55083-6	126101	"T" Bar			
700-51	125946	Screw	55083-7	126102	"T" Bar			
700-55	125947	Screw	55083-8	126103	"T" Bar			
700-59	125948	Screw	55083-9	126104	"T" Bar			
700-60	125949	Screw	55083-10	126105	"T" Bar			
700-65	125722	Screw	55083-11	126106	"T" Bar			

NEW TO OLD NUMBER CONVERSION LIST

New No.	Old No.	New No.	Old No.	New No.	Old No.	New No.	Old No.	New No.	Old No.
1036	34-51	3642	200-704	112622	33-334	125127	33-58	125198	122-557
1157	33-1	3646	200-1032	112623	33-335	125128	33-59	125199	33-278
1158	33-3	3646	W-10076	112624	33-337	125129	33-60	125200	33-282
1159	33-5	3647	200-1139	112625	33-347	125130	33-63	125201	33-283
1160	33-6	3649	200-2212	112626	34-4	125131	33-65	125202	33-285
1161	33-7	3650	700-71	112627	34-11	125132	33-70	125203	33-289
1162	33-10	4702	35-52	112628	34-64	125133	33-72	125205	33-296
	33-156	4703	35-86	112629	35-1	125134	33-73	125206	33-336
1163	33-11	4705	35-134	112630	35-2	125135	33-75	125207	33-339
1164	33-14	4706	300-505	112631	35-8	125136	33-79	125208	33-340
1165	33-16	4707	300-506	112632	35-33	125137	33-82	125209	33-341
1166	33-17	4708	35-87	112633	35-54	125138	33-85	125210	400-510
1167	33-19	4814	W-10082	112634	35-89	125139	33-86	125211	33-344
1168	33-35	5475	34-5	112635	35-137	125140	33-88	125212	33-346
1169	33-37	5556	300-301	112636	35-140	125141	33-89	125213	33-348
1170	33-49	5740	33-13	112640	122-384	125142	33-98	125214	33-349
1171	33-53	5815	34-14	114756	138-5	125143	33-101	125215	33-350
1172	33-54	5816	100-74	114758	138-141	125144	33-108	125216	33-356
1173	33-64	6033	200-1031	117313	W-669	125146	33-114	125217	33-362
1174	33-157	9574	100-88	119957BC	122-490	125147	33-121	125218	34-1
1175	33-169	9575	122-113	119959BC	122-345	125148	33-123	125219	34-3
1176	33-195	9576	200-1135	119960BC	122-444	125149	33-130	125220	34-10
1177	33-234	9577	200-1137	120499BC	122-570	125150	33-135	125221	34-13
1178	33-237	45815	W-10077	125000	33-74	125151	33-141	125222	34-16
1179	33-238	49054	33-111	125001	33-132	125152	33-143	125223	34-19
1181	33-360	55257	34-12	125002	33-179	125153	33-151	125224	34-24
1222	33-39	70071	W-10088	125003	33-206	125154	33-153	125225	34-27
1223	33-69	70072	W-10090	125004	33-272	125155	33-158	125226	34-35
1263	33-4	70073	34-7	125005	33-280	125156	33-162	125227	34-39
1299	33-290	70793	W-1098	125006	33-333	125157	33-163	125228	34-41
2723	34-63	71047	43-12	125009	34-59	125158	33-167	125229	34-48
3595	34-2	71444	123-8	125010	61-24	125159	33-168	125230	34-54
3597	34-6	71681	W-1958	125011	103-27	125160	33-175	125231	34-58
3598	34-8	72669	W-2328	125012	122-48	125161	33-176	125232	34-60
3599	34-9	73202	700-68	125013	122-276	125162	33-180	125233	34-61
3600	34-25	74877	W-667	125014	122-337	125163	33-185	125234	34-62
3602	34-28	74878	W-9542	125015	123-244	125164	33-193	125235	34-66
3603	34-29	74879	4-8	125016	126-123	125165	33-194	125236	35-13
3604	34-50	80520BC	122-352	125091	125-221	125166	33-196	125237	35-16
3605	34-53	80523BC	122-356	125092	36-131	125167	33-197	125238	35-23
3606	34-55	84695	122-562	125097	125-197	125168	33-198	125239	35-24
3608	35-58	84990	W-6095	125098	125-198	125169	33-202	125240	35-26
3610	35-126	86341	W-9470	125099	52-4	125170	33-207	125241	35-27
3611	35-129	86850	33-240	125100	2-3	125171	33-208	125242	35-28
3614	36-56	87636	33-270	125101	4-4	125172	33-209	125243	35-34
3614	36-137	88993	138-100	125102	4-11	125173	33-210	125244	35-40
3615	36-152	89883	W-9337-F	125103	6-1	125174	33-211	125245	35-43
3616	36-173	110434	33-110	125104	6-2	125175	33-212	125246	35-47
3618	61-7	110435	34-56	125105	23-8	125176	33-213	125247	35-48
3620	100-75	110436	35-42	125106	25-21	125177	33-217	125248	35-53
3621	100-85	110437	35-70	125107	26-19	125178	33-224	125249	35-66
3623	100-97	110438	35-88	125108	33-2	125179	33-225	125250	35-68
3624	100-108	110439	36-146	125109	33-8	125180	33-227	125251	35-69
3625	S-122-39	110440	36-153	125110	33-9	125181	33-228	125252	35-71
3626	122-68	110441	100-96	125111	33-12	125182	33-267	125253	35-72
3627	S-122-234	110442	138-22	125112	33-15	125183	33-235	125254	35-78
3628	123-7	110443	138-55	125113	33-18	125184	33-236	125255	35-80
3629	123-10	110444	138-58	125114	33-22	125185	33-241	125256	35-84
3630	123-36	110445	138-137	125115	33-23	125186	33-244	125257	35-85
3632	123-163	110446	1000-252	125116	33-29	125187	33-245	125258	35-99
3633	123-164	110741	33-78	125117	33-32	125188	33-250	125259	35-101
3634	123-165	110742	33-311	125118	33-36	125189	33-252	125260	35-104
3635	123-166	110743	W-10074	125119	33-38	125190	33-253	125261	35-111
3636	123-167	110901	(122-574	125120	33-41	125191	33-254	125262	35-116
3637	123-194		(122-367	125121	33-42	125192	33-255	125263	35-123
3638	125-9	110902	(122-367	125122	33-43	125193	33-257	125264	35-124
3639	200-20		(122-368	125123	33-45	125194	33-264	125265	35-125
3639	W-10083	111019	122-575	125124	33-50	125195	33-271	125266	35-131
3640	200-153	112620	33-21	125125	33-51	125196	33-274	125267	35-132
3640	W-10080	112621	33-170	125126	33-57	125197	33-276	125268	35-133

New No.	Old No.	New No.	Old No.	New No.	Old No.	New No.	Old No.	New No.	Old No.
125269	36-120	125343	100-145	125417	122-65	125491	122-363	125564	122-457
125270	36-19	125344	100-148	125418	122-67	125492	122-364	125565	122-459
125271	36-23	125345	100-151	125419	S-122-69	125493	122-365	125566	122-460
125272	36-24	125346	100-152	125420	122-80	125494	122-366	125567	122-461
125273	36-28	125347	100-153	125421	122-84	125495	122-369	125568	122-462
125274	36-35	125348	100-159	125422	122-86	125496	122-370	125569	122-463
125275	36-38	125349	100-167	125423	122-88	125497	122-371	125570	122-464
125276	36-39	125350	100-173	125424	122-89	125498	122-373	125571	122-465
125277	36-45	125351	100-178	125425	122-94	125499	122-374	125572	122-466
125278	36-51	125352	100-179	125426	122-95	125500	122-375	125573	122-467
125279	36-72	125353	100-187	125427	122-97	125501	122-376	125574	122-468
125280	36-73	125354	100-188	125428	122-100	125502	122-377	125575	122-469
125281	36-80	125355	100-217	125429	122-101	125503	122-378	125576	122-470
125282	36-85	125356	100-218	125430	122-102	125504	122-380	125577	122-471
125283	36-103	125357	100-219	125431	122-106	125505	122-381	125578	122-472
125284	36-104	125358	100-220	125432	122-106G	125506	122-382	125579	122-473
125285	36-105	125359	100-227	125433	122-107	125507	122-383	125580	122-474
125286	36-106	125360	100-228	125434	122-108	125508	122-386	125581	122-475
125287	36-109	125361	100-234	125435	122-111	125509	122-387	125582	122-476
125288	36-110	125362	100-235	125436	122-112	125509BC	122-392	125583	122-477
125289	36-113	125363	100-246	125437	122-115	125510	122-388	125584	122-478
125290	36-114	125364	100-253	125438	122-116	125511	122-389	125585	122-479
125291	36-124	125365	100-254	125439	122-117	125512	122-390	125586	122-480
125292	36-132	125366	100-255	125440	122-118	125514	122-396	125587	122-481
125293	36-134	125367	100-256	125441	122-119	125515	122-397	125588	122-482
125294	36-136	125368	100-257	125442	122-120	125516	122-399	125589	122-483
125295	36-139	125369	103-75	125443	122-121	125517	122-400	125590	122-484
125296	36-147	125370	103-77	125444	122-124	125518	122-401	125591	122-485
125297	36-150	125371	103-102	125445	122-126	125519	122-402	125592	122-487
125298	36-151	125372	103-151	125446	122-127	125520	122-403	125594	122-511
125299	36-154	125373	112-7	125447	122-128	125521	122-404	125595	122-526
125300	36-164	125374	112-8	125448	122-129	125522	122-405	125596	122-528
125301	36-165	125375	112-64	125449	S-122-130	125523	122-406	125597	122-529
125302	36-170	125376	120-20	125450	122-133	125524	122-407	125598	122-530
125303	36-172	125377	F-126-24	125451	S-122-134	125525	122-408	125599	122-531
125304	36-174	125379	122-5	125452	122-135	125526	122-409	125600	122-532
125306	43-10	125380	122-11	125453	S-122-136	125527	122-410	125601	122-533
125307	46-3	125381	122-12	125454	122-137	125528	122-411	125602	122-534
125308	47-2	125382	122-18	125455	122-139	125529	122-412	125603	122-535
125309	47-4	125383	S-122-19	125456	122-140	125530	122-413	125604	122-536
125310	47-5	125384	S-122-20	125457	122-143	125531	122-414	125605	122-537
125311	52-5	125385	S-122-21	125458	122-146	125532	122-415	125606	122-538
125312	54-3	125386	S-122-22	125459	122-147	125533	122-416	125607	122-539
125313	61-9	125387	S-122-23	125461	122-192	125534	122-417	125608	122-540
125314	61-10	125388	S-122-24	125462	122-193	125535	122-418	125609	122-541
125315	61-12	125389	122-25	125463	122-194	125536	122-419	125610	122-542
125316	61-21	125390	122-26	125464	122-195	125537	122-420	125611	122-543
125317	61-25	125391	122-27	125465	122-196	125538	122-421	125612	122-544
125318	80-1	125392	122-28	125466	122-241	125539	122-422	125613	122-545
125319	80-2	125393	122-29	125467	122-242	125540	122-423	125614	122-546
125320	80-3	125394	122-35	125468	122-244	125541	122-424	125615	122-547
125321	80-4	125395	122-36	125469	122-245	125542	122-425	125616	122-548
125322	80-5	125396	S-122-37	125470	122-246	125543	122-426	125617	122-549
125323	100-70	125397	S-122-38	125471	122-247	125544	122-427	125618	122-550
125324	100-71	125398	S-122-40	125472	122-249	125545	122-428	125619	122-551
125325	100-72	125399	122-41	125473	122-250	125546	122-429	125620	122-552
125326	100-73	125400	122-42	125474	122-251	125547	122-430	125621	122-553
125327	100-79	125401	122-43	125475	122-252	125548	122-431	125622	122-554
125328	100-80	125402	122-46	125476	122-253	125549	122-432	125623	122-555
125329	100-81	125403	122-49	125477	122-254	125550	122-433	125624	122-556
125330	100-84	125404	122-50	125478	122-257	125551	122-434	125625	122-558
125331	100-92	125405	122-51	125479	122-259	125552	122-435	125626	122-559
125332	100-93	125406	122-52	125480	122-260	125553	122-436	125628	122-563
125333	100-100	125407	122-53	125481	122-275	125554	122-437	125629	122-564
125334	100-101	125408	122-54	125482	122-290	125555	122-438	125630	122-565
125335	100-106	125409	122-55	125483	125-240	125556	122-439	125631	122-567
125336	100-109	125410	122-56	125484	122-346	125557	300-701	125633	122-571
125337	100-110	125411	122-57	125485	122-347	125558	122-447	125634	122-572
125338	100-111	125412	122-58	125486	122-349	125559	122-450	125635	122-573
125339	100-112	125413	122-60	125487	122-350	125560	122-451	125636	122-576
125340	100-113	125414	122-61	125488	122-357	125561	122-452	125637	122-577
125341	100-120	125415	122-62	125489	122-358	125562	122-453	125638	122-580
125342	400-509	125416	122-63	125490	122-359	125563	122-454	125639	122-581

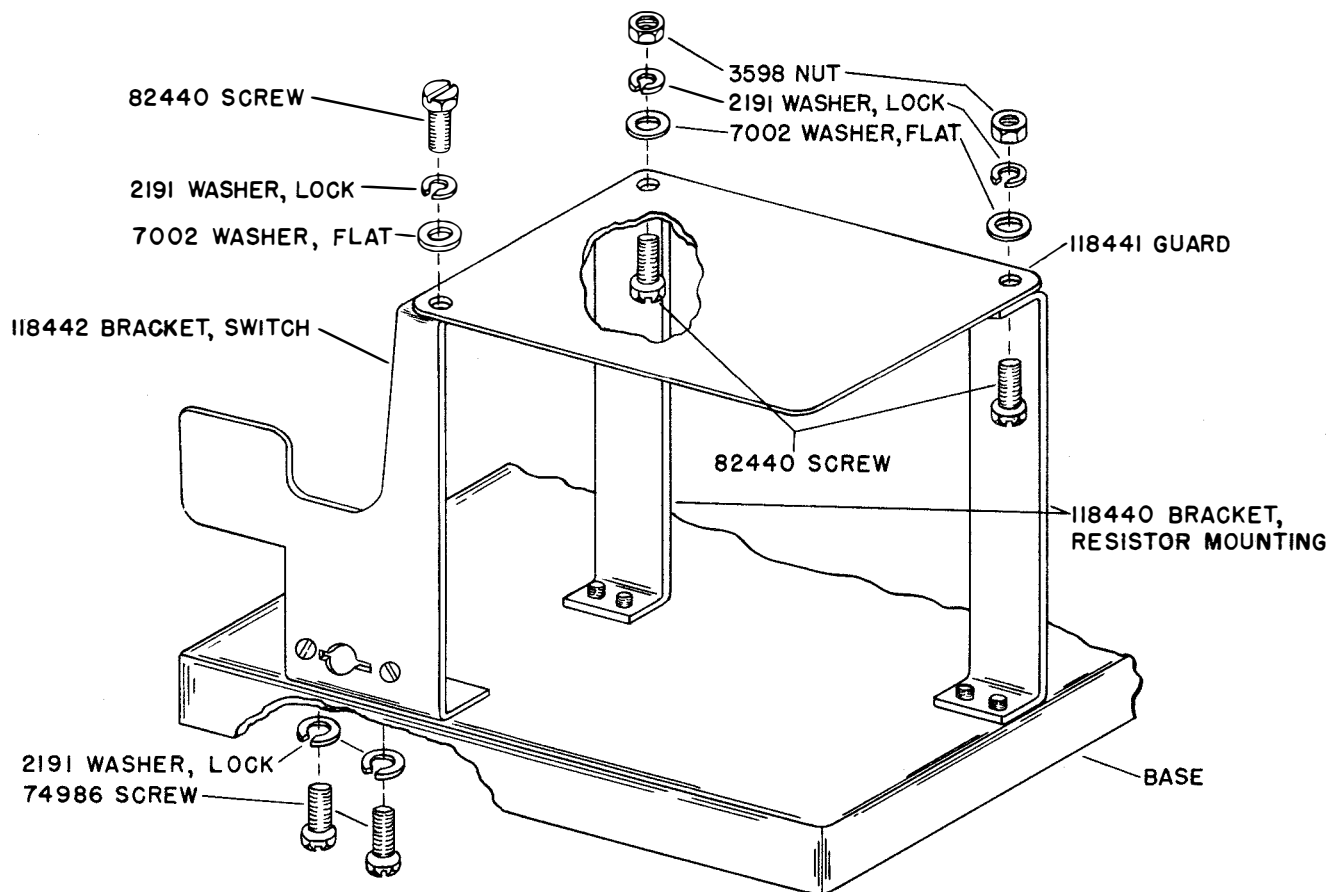
New No.	Old No.	New No.	Old No.	New No.	Old No.	New No.	Old No.	New No.	Old No.
125640	122-582	125714	125-161	125789	200-214	125863	300-304	125936	500-308
125641	122-583	125715	125-169	125790	200-705	125864	300-306	125937	500-309
125642	122-586	125716	125-176	125791	200-1028	125865	300-307	125938	500-310
125643	122-589	125717	125-184	125792	200-1132	125866	300-308	125939	500-311
125644	122-590	125718	125-194	125793	200-1134	125867	300-312	125940	500-403
125645	122-592	125719	125-208	125794	200-1136	125868	300-314	125941	500-404
125646	122-593	125720	125-209	125795	200-1138	125869	300-315	125942	500-406
125647	122-594	125721	125-211	125796	200-1175	125870	300-316	125943	500-600
125648	122-596	125722	700-65	125797	200-1176	125871	300-319	125944	500-703
125649	122-597	125723	125-237	125798	W-122-152	125872	300-320	125945	500-1008
125650	122-598	125724	125-238	125799	200-1178	125873	300-322	125946	700-51
125651	122-599	125725	125-239	125800	200-1179	125874	300-400	125947	700-55
125652	122-600	125726	125-242	125801	200-1345	125875	300-501	125948	700-59
125653	122-601	125727	125-269	125802	200-1348	125876	300-502	125949	700-60
125654	122-602	125728	125-270	125803	200-1703	125877	300-503	126096	55083-1
125655	122-603	125729	125-276	125804	200-2002	125878	300-504	126097	55083-2
125656	122-604	125730	126-11	125805	200-2210	125879	300-507	126098	55083-3
125657	122-605	125731	126-64	125806	200-2217	125880	300-508	126099	55083-4
125658	122-606	125732	126-92	125807	200-2800	125881	300-509	126100	55083-5
125659	122-607	125733	126-93	125808	200-2802	125882	300-510	126101	55083-6
125660	122-608	125734	126-95	125809	300-3	125883	300-511	126102	55083-7
125661	122-609	125735	126-107	125810	300-103	125884	300-512	126103	55083-8
125662	122-610	125736	126-108	125812	300-104	125885	300-513	126104	55083-9
125663	122-611	125737	126-111	125813	300-105	125886	300-515	126105	55083-10
125664	122-612	125738	126-114	125814	300-106	125887	300-516	126106	55083-11
125665	122-613	125739	126-118	125815	300-107	125888	300-517	126107	55083-12
125666	122-614	125740	126-126	125816	300-108	125889	300-518	126108	55083-13
125667	122-615	125741	126-127	125817	300-109	125890	300-519	126109	55083-14
125668	122-616	125742	138-1	125818	300-110	125891	300-601	126110	55083-15
125669	122-617	125743	138-2	125819	300-111	125892	300-602	126111	55083-16
125670	122-618	125744	138-3	125820	300-113	125893	300-603	126112	55083-17
125671	122-619	125745	138-4	125821	300-114	125894	300-604	126113	55083-18
125672	122-620	125747	138-6	125822	300-115	125895	300-605	126114	55083-20
125673	122-621	125748	138-7	125823	300-116	125896	300-606	126115	55083-21
125674	122-622	125749	138-9	125824	300-117	125897	300-607	126156	55084-A2
125675	122-623	125750	700-75	125825	300-118	125898	300-608	126157	55084-A4
125676	122-624	125751	138-20	125826	300-119	125899	300-609	126158	55084-A6
125677	122-625	125752	138-23	125827	300-120	125900	300-700	126159	55084-A8
125678	122-626	125753	138-24	125828	300-121	125901	300-702	126160	55084-A10
125679	122-627	125754	138-25	125829	300-128	125902	400-2	126161	55084-A12
125680	122-628	125755	138-26	125830	300-130	125903	400-3	126162	55084-A14
125681	122-629	125756	138-27	125831	300-131	125904	400-6	126163	55084-A16
125682	122-630	125757	138-28	125832	300-132	125905	400-102	126164	55084-A18
125683	122-697	125758	138-30	125833	300-137	125906	400-203	126165	55084-A20
125684	122-698	125759	138-32	125834	300-138	125907	400-206	126166	55084-B1
125685	122-699	125760	138-33	125835	300-139	125908	400-207	126167	55084-B3
125686	122-700	125761	138-34	125836	300-140	125909	400-209	126168	55084-B5
125687	122-702	125762	138-35	125837	300-142	125910	400-210	126169	55084-B7
125688	122-703	125763	138-36	125838	300-143	125911	400-211	126170	55084-B9
125689	122-704	125764	138-38	125839	300-144	125912	400-212	126171	55084-B11
125690	122-705	125765	138-52	125840	300-145	125913	400-215	126172	55084-B13
125691	122-706	125766	138-67	125841	300-146	125914	400-218	126173	55084-B15
125692	122-707	125767	138-68	125842	300-147	125915	400-221	126174	55084-B17
125693	122-708	125768	138-69	125843	300-150	125916	400-222	126232	74273-1
125694	122-709	125769	138-74	125844	300-152	125917	400-302	126233	W-666
125695	122-710	125770	700-76	125845	300-153	125918	400-402	126234	W-1238
125696	123-37	125771	138-119	125846	300-154	125919	400-513	126235	W-1241
125698	123-123	125772	138-120	125847	300-155	125920	400-519	126237	W-6104
125699	123-135	125773	138-122	125848	300-170	125921	400-801	126238	W-9277
125700	123-154	125774	138-123	125849	300-171	125922	400-1002	126239	W-9278
125701	123-158	125775	138-127	125850	300-172	125923	1000-203	126240	W-9279-A
125702	123-159	125776	138-128	125851	300-173	125924	400-1404	126241	W-10086
125703	123-308	125777	138-129	125852	300-174	125925	500-4	126242	138-43
125704	123-314	125778	138-130	125853	300-175	125926	500-6	126243	138-44
125705	123-342	125779	138-133	125854	300-177	125927	500-7	126244	138-49
125706	123-343	125780	138-134	125855	300-178	125928	500-19	126245	138-125
125707	123-357	125781	138-135	125856	300-179	125929	500-80	126246	138-126
125708	123-362	125782	138-136	125857	300-180	125930	500-96	126247	122-348
125709	123-364	125783	138-139	125858	300-181	125931	500-99	126248	122-354
125710	123-412	125785	200-133	125859	300-200	125932	500-104	126249	122-355
125711	123-447	125786	200-137	125860	300-201	125933	500-105	126250	33-275
125712	125-23	125787	200-139	125861	300-302	125934	500-112	126251	200-1177
125713	125-55	125788	200-148	125862	300-303	125935	500-205	126253	125-217
								126336	W-2657

CHANGES AND ADDITIONS TO
BULLETINS 1064, ISSUE 2 AND 1080, ISSUE 1
SINGLE MAGNET REPERFORATOR
(MODELS 14 AND 20 NONTYPING)

This correction sheet covers parts ordering information for the two newly designed resistor brackets (118440), a new switch bracket (118442), and a new guard (118441) to replace the two 86138 resistor brackets and the 86149 switch bracket. The 86144 switch cover is eliminated.

The three old style parts are no longer manufactured. New style parts can be replaced as a group only.

The following sketch shows the components of the new assembly.



ADDITIONS TO PARTS BULLETINS

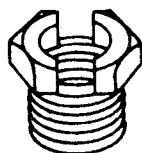
- 1028, Issue 2 - Model 14 Type Bar Tape Printer, Page 5
- 1030, Issue 2 - Model 14 Type Bar Tape Printer, Page 5
- 1031, Issue 3 - Model 14 Type Bar Tape Printer, Page 7
- 1037, Issue 4 - Model 15 Type Bar Page Printer, Page 3
- 1063, Issue 2 - Model 20 Type Bar Page Printer, Page 2
- 1064, Issue 2 - Single Magnet Reperforator (Models 14 and 20 Nontyping), Page 2
- 1072, Issue 2 - Regenerator Unit and Panel, Page 2
- 1074, Issue 2 - Type Wheel Page Printer (Model 26), Page 8
- 1080, Issue 1 - Single Magnet Reperforator (Model 14 Nontyping), Page 2
- 1082, Issue 2 - Typing Reperforator (Model 14), Page 18
- 1088, Issue 2 - Typing Reperforator (Model 14), Page 10
- 1094, Issue 2 - Model 15 Type Bar Page Printer, Page 3
- 1100, Issue 2 - Typing Reperforator (Model 14), Page 8
- 1107, Issue 1 - Nontyping Selector, Page 6
- 1108, Issue 2 - Reperforator Transmitter (Model 14), Page 13
- 1110, Issue 2 - U.S. Army Signal Corps Printers TG-7-A and TG-7-B (Teletype Model 15), Page 3
- 1114, Issue 1 - Model 15 Type Bar Page Printer, Page 3
- 1116, Issue 1 - Nontyping Selector, Page 5
- 1117, Issue 1 - U.S. Army Signal Corps Reperforator Transmitters TG-26-A and TG-27-A (Teletypewriter), Page 7
- 1126, Issue 1 - Reperforator Transmitter Distributor (Model 14), Page 11
- 1130, Issue 1 - Multiple Reperforator, Page 6
- 1141, Issue 1 - Teletype Sequential Control (SECO) System Equipment, Page 13
- 1143, Issue 2 - Sequential Selector, Page 13

1. This correction sheet which supersedes EE-687 covers parts ordering information for the redesigned capstan nut associated with the selector clutch.

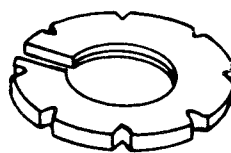
2. To permit adjustment of the selector clutch torque without the necessity of removing the selector cam sleeve, a 119540 keyed nut, a 122974 capstan nut, and a 122838 spacer replaces the 72517 nut and 72515 keyed nut.

3. Shims formerly supplied to adjust the selector clutch torque in the field are still available under the following numbers:

- 96763 Shim (.012" thick)
- 96764 Shim (.016" thick)
- 96765 Shim (.020" thick)



119540 NUT, KEYED



122974 NUT, CAPSTAN



122838 SPACER

CHANGES AND ADDITIONS
TO THE FOLLOWING PARTS BULLETINS

1031, Issue 3, page 6	1088, Issue 2, page 12
1064, Issue 2, page 3	1100, Issue 2, page 9
1080, Issue 1, page 3	1117, Issue 2, page 8
1082, Issue 2, page 10	

This correction sheet covers the standardization of the components used on pulling magnet selector plate assemblies.

The 74986 armature bracket screws have been replaced by 8539 screws.

The 125168 eccentric stop screw has been replaced by an 1160 screw.

Three 2034 washers for the 6942 eccentric screw, have been replaced by three 125011 washers.

The 7586 adjusting screw and its associated 7588 adjusting nut has been replaced by a 74724 screw and 112626 nut.

Bulletin 1088 (Issue 2) page 27. The following information applies to the 14 type bases (FB 49-201-214) equipped with the 114949 tape-out contact assembly.

A 76299 spring replaces the 2623 standard spring on Model 14 bases equipped with the 114949 tape-out contact assembly to insure positive unlatching of the locking pawl and operation of the tape-out contacts.

In addition to the above referenced bulletin see correction sheet 620EE, Issue 1, page 6.

CHANGES AND ADDITIONS TO PARTS BULLETINS

1031, Issue 3, Page 6, Model 14 Type Bar Page Printer
1063, Issue 2, Page 2, Model 20 Type Bar Page Printer
1064, Issue 2, Page 3, Model 14 and 20 Non-Typing Reperforator
1082, Issue 1, Page 3, Model 14 Typing Reperforator
1088, Issue 2, Pages 12,14 Model 14 Typing Reperforator
1100, Issue 2, Page 9, Model 14 Typing Reperforator
1108, Issue 2, Page 14, Model 14 Perforator Transmitter
1083, Issue 1, Page 1, Model 14, Non-Typing Selector
1107, Issue 1, Page 8, Model 14, Non-Typing Selector
1116, Issue 1, Page 6, Model 14, Non-Typing Selector
1141, Issue 1, Page 12, Sequential Selector
1143, Issue 3, Page 8, Sequential Selector
1072, Issue 2, Page 1.

The two 74722 washers used with the 82440 screws for mounting the 6884 armature bracket or the 6811 screws for mounting the 90043 armature bracket, have been replaced by two 124973 washers.

The 74722 washers used with the 6811 screws for mounting the 92273 magnet core, have been replaced by two 124973 washers.

The overall dimensions of the 74722 washer and the 124973 washer are approximately 5/16" and 11/32" respectively.

Teletype Corporation
Chicago, Illinois, U.S.A.

789EE
Issue 3
July, 1956

CHANGES AND ADDITIONS
TO THE FOLLOWING PARTS BULLETINS

BULLETIN NO. 1080B, ISSUE 1, PAGE 5
BULLETIN NO. 1064B, ISSUE 2, (BELL) PAGE 5
SINGLE MAGNET REPERFORATOR (RPE)
(MODELS 14 AND 20 NON-TYPING)
BULLETIN NO. 1052B, ISSUE 1, PAGES 2 AND 3
(SIX-UNIT PERFORATOR (MPE)

To provide a means for identifying the beginning or the end of a fully perforated six-unit tape the 81603 tape knife has been replaced by a 123581 tape knife. The 123581 tape knife cuts a triangular notch which produces a small flag on the trailing edge of the tape as it is torn off, and a corresponding notch on the leading edge.

NOTE: Part No. 87603 referred to in Bulletin No. 1064B is in error. This number should be 81603.

* * *

Printed in U.S.A.

CHANGES IN TELETYPE PARTS BULLETINS

1028B, Issue 2	1073B, Issue 1	1109B, Issue 1	1131B, Issue 1
1030B, Issue 2	1074B, Issue 2	1110B, Issue 2	1138B, Issue 1
1031B, Issue 3	1080B, Issue 1	1116B, Issue 1	1141B, Issue 1
1041B, Issue 4	1087B, Issue 2	1117B, Issue 2	1142B, Issue 1
1063B, Issue 2	1088B, Issue 2	1121B, Issue 1	1143B, Issue 3
1064B, Issue 2	1100B, Issue 2	1125B, Issue 1	1144B, Issue 1
1068B, Issue 1	1107B, Issue 1	1126B, Issue 1	1150B, Issue 1
1072B, Issue 2	1108B, Issue 2	1130B, Issue 1	1151B, Issue 1

This correction sheet has been revised to include only those bulletins pertinent to the subject matter.

To provide improved performance with respect to maintenance of friction clutches and the selector end of main shafts, the following graphite impregnated felt washers and wicks replace the standard felt washers and wicks as indicated below:

Old Style	Description	Graphite Impregnated
6861	Washer	122741
72883	Washer	122743
74085	Washer	122744
74800	Washer	122745
76084	Washer	*76084
77019	Washer	122747
105045	Wick	122752
113952	Washer	122748

*Retains Old Number.

The 91265 cam sleeve (holding magnet) has been replaced by a 122754 cam sleeve.

The 115232 cam sleeve for the sequential selector has been replaced by a 129674 cam sleeve.

NOTE: The new cam sleeves have a graphite loaded bushing.

New and old style parts are interchangeable.

* * *

CHANGES AND ADDITIONS TO
PARTS BULLETINS 1064B, ISSUE 2 AND 1080B, ISSUE 1
SINGLE MAGNET REPERFORATOR
(MODELS 14 AND 20 NONTYPING)

PAGE 1. BASE

Add 129663 switch cover-fibre between 74620 switch and 118442 bracket.

The 1161 screw for securing the ground wire has been replaced by an 1160 screw.

The 73670 terminal block assembly also includes the 73705 terminal block.

PAGE 2. MAIN SHAFT

The 72884 friction disc has been replaced by a 111686 friction disc.

PAGE 3. SELECTOR UNIT

The 7586 adjusting screw has been replaced by a 74724 adjusting screw.

The 74986 screw and 74722 washer mounting the armature bracket have been replaced by an 8539 screw and 124973 washer.

The 8539 screw mounting the yoke bracket and mounting block has been replaced by a 6811 screw.

The 33-198 screw securing the eccentric stop has been replaced by an 1160 screw.

The 2034 washer used with the 6942 screw has been replaced by a 125011 washer.

PAGE 4. RANGE SCALE

The 90088 trip latch has been replaced by a 6830 trip latch.

PUNCH BLOCK ASSEMBLY

The 81515 punch holder has been replaced by a 110733 punch holder.

The 77984 guide plate has been replaced by a 110730 guide plate.

PAGE 5. PUNCH UNIT

Add a 110441 washer to the 73482 stud mounting the tape tension lever.

Add a 2191 lock washer to the 8543 screw securing the tape knife.

The 74059 screw and 7002 washer securing the roller arm have been replaced by an 80444 screw and 90790 washer.

The 41385 spring has been replaced by a 110839 spring.

PAGE 6. (1064B ONLY) RESISTOR AND BRACKET

Add a 2191 lock washer to the 74059 screw fastening the terminal to the 74059 screw fastening the terminal to the resistor.

Add 96261 wire strap-BK(# 3/4" long) under the 96255 wire strap-w.

PAGE 7. FILTER ASSEMBLY

The 92229 line relay radio filter assembly has been replaced by 111664 line relay filter assembly and is subject to the following changes:

Delete 74614 resistor

The 61-24 washers-bakelite have been replaced by 75750 washers-fibre.

CONNECTING BLOCK ASSEMBLY

The 75436 resistor has been replaced by a 74614 resistor 2600 ohms (2000-600).

RESISTOR UNIT

The 73357 terminal end assembly also includes the 89925 terminal block.

The 1026 screw securing the resistor mounting brackets has been replaced by an 1169 screw.

PAGE 8. TARGET LAMP

Add 2407 lock washer between the 91683 nut and the under side of the lamp bracket.

See revised drawing of the tape reel assembly for changes in part numbers. Page 4 of this correction sheet.

COVER ASSEMBLY

The 102504 cover assembly-black wrinkle has been replaced by RPEC200AA cover assembly-black wrinkle and is subject to the following changes:

Delete 76099 washer and 71646 nut.

Add 1207 screw, 3640 lock washer, 125011 washer and 125235 nut to fasten the range finder door hinge to the cover.

Add the 118122AA range finder door-black wrinkle (complete with hinges and 74637 springs).

The 1174 screw securing the lid retaining link has been replaced by a 94669 screw.

PAGE 10. MOTOR

See bulletin 1147B, Page 7 for changes in component parts.

PAGE 11. CENTER CONTACT GOVERNOR ASSEMBLY

Add 7002 washer to the 6347 screw securing the 6319 block.

GOVERNOR BRUSH AND SPEED ADJUSTING BRACKET ASSEMBLY

The 80341 governor brush and speed adjusting bracket assembly has been replaced by a 107095 governor brush and speed adjusting bracket assembly and is subject to the following changes.

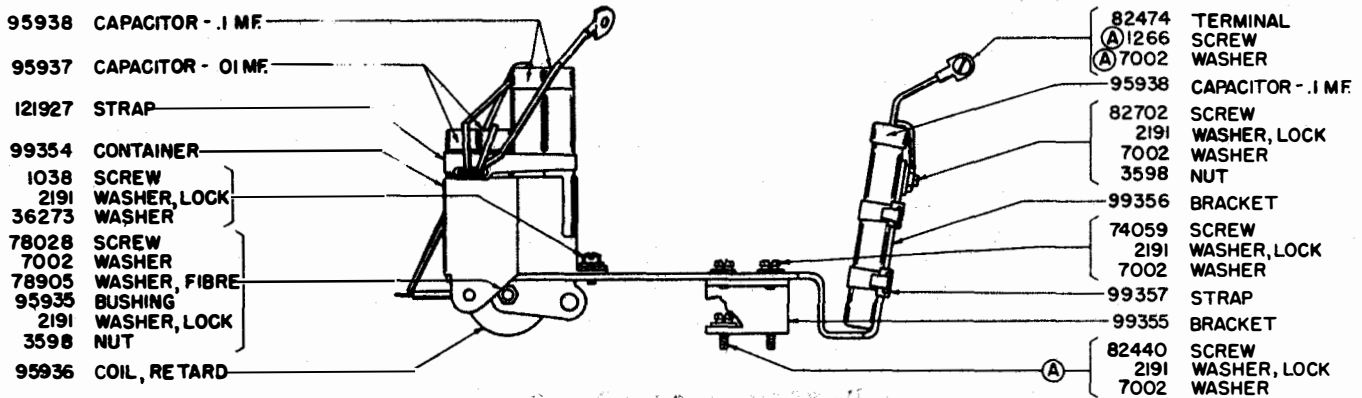
The 80342 screw has been replaced by an 82440 screw and a 7002 washer is used in addition to the 2191 lock washer.

The 82440 screw, 2191 lock washer, 7002 washer and 80335 clamping plate are not included in the 107095 governor brush and speed adjusting bracket assembly and must be ordered separately.

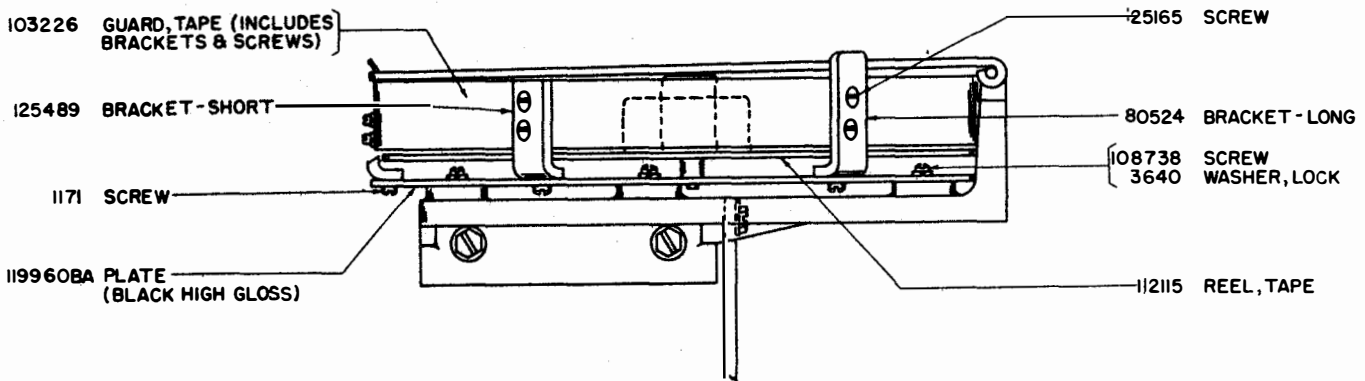
PAGE 12. TUNING FORK

The 72637 tuning fork has been replaced by a 103628 tuning fork.

* * *



III252 FILTER ASSEMBLY
(EXCLUDES PARTS MARKED (A))



TAPE REEL