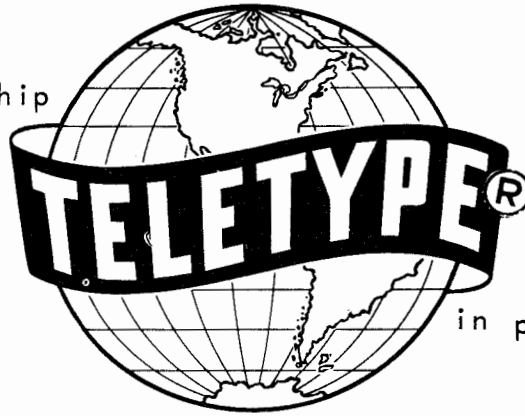


symbol of leadership



in printing telegraphy

BULLETIN 1163B

PARTS

TAPE READER SET

(BX)

TELETYPE[®]
CORPORATION
SUBSIDIARY OF *Western Electric Company* INC.
SKOKIE, ILLINOIS, U. S. A.



LIST OF EFFECTIVE PAGES

November, 1960

(Supersedes September, 1960 Issue)

Page Number	Change In Effect
A	Change 2
B to D	Change 1
1-1 to 1-5	Change 1
2-1	Change 1
2-2	Change 2
2-3	Change 1
2-4	Change 2
2-5 to 2-6	Change 1
2-7	Change 2
2-8 to 2-9	Change 1
3-1 to 3-4	Change 1
4-1 to 4-3	Change 1

The above list indicates the effective pages as of the date of issue. Upon receipt of change pages insert them numerically and discard any superseded pages.

TABLE OF CONTENTS

	Page
Variations in the 600 wpm Tape Reader Set	C
Photograph	D

SECTION 1 - BASE UNIT AND COVER (BxB)

Tape Reader Base (Single Unit)	1-2
Tape Reader Base (Double Unit)	1-3
Covers	1-4
Numerical Index - Section 1	1-5

SECTION 2 - TAPE READER UNIT (BX)

Side Plate Mechanism	2-2 , 2-3
Main Bail Assembly	2-4
Terminal Bridge Assembly	2-5
Magnet and Main Shaft Mechanisms	2-6
138005 and 139919 Top Plate Assemblies	2-7
Numerical Index - Section 2	2-8

SECTION 3 - MOTOR UNIT (LMU)

LMU3 Synchronous Motor Unit	3-2
Modification Kits to Add Motor Drive Parts	3-3
Numerical Index - Section 3	3-4

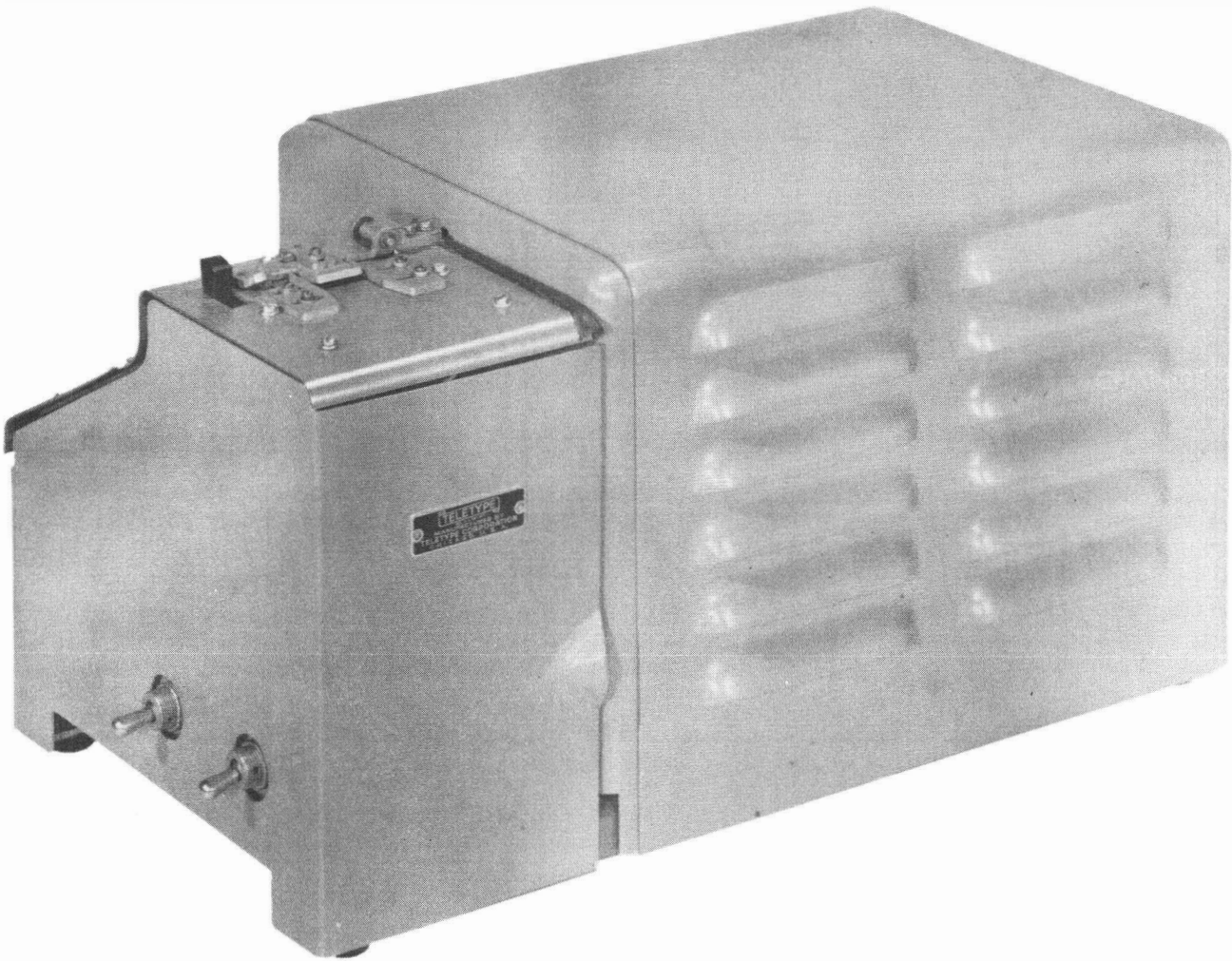
SECTION 4 - MASTER NUMERICAL INDEX

VARIATIONS IN THE 600 WPM TAPE READER SET									
TAPE READER UNIT BX	1	2	3	4	11	12	13	14	
CODE LEVEL 5 6 7 8	X	X	X	X	X	X	X	X	X
WIDTH OF TAPE 11/16" 7/8" 1"	X	X	X	X	X	X	X	X	X
SENSING PIN ARRANGEMENT	O 1	O 6	O 7	O 8	O 1	O 0	C 0	O 0	
	O 2	O 1	O 6	O 7	O 2	O 1	C 1	O 1	
	o	O 2	O 1	O 6	o	O 2	O 2	O 2	
	O 3	o	o	O 1	O 3	o	O 3	O 3	
	O 4	O 3	O 2	O 2	O 4	O 3	O 4	O 4	
Direction of Tape Feed ←	O 5	O 4	O 4	O 4	O 5	O 5	O 5	O 5	
CABLE 138016 139917	X	X	X	X	X	X	X	X	X
BASE UNIT AND COVER	BXB			200**	202**				
ACCOMMODATES	Single Unit Double Unit			X	X				
SWITCHES	Motor On Tape Start Tape Out			X X X	X X X				
CABLE	138139 138140			X	X				
DRIVE PARTS	136018 136019			X	X				

PAINT FINISH COLOR CODE CHART						
(for parts and assemblies requiring a paint finish)						
SMOOTH FINISHES			WRINKLE FINISHES			
Suffix	Color	Bell System Code	Suffix	Color	Bell System Code	
BB	Black Semi-gloss	34	AA	Black	37	
BA	Black High Gloss		AB	Gray Green		40
BK	Gray Green		AC	Light Brown		
BH	Light Gray	38	AD	Dark Brown	38	
BU	Light Gray Semi-gloss		AF	Federal Gray		
BV	Federal Gray					
BZ	Charcoal Gray					
BX	Sunland Beige					

Suffix to be applied following the part number

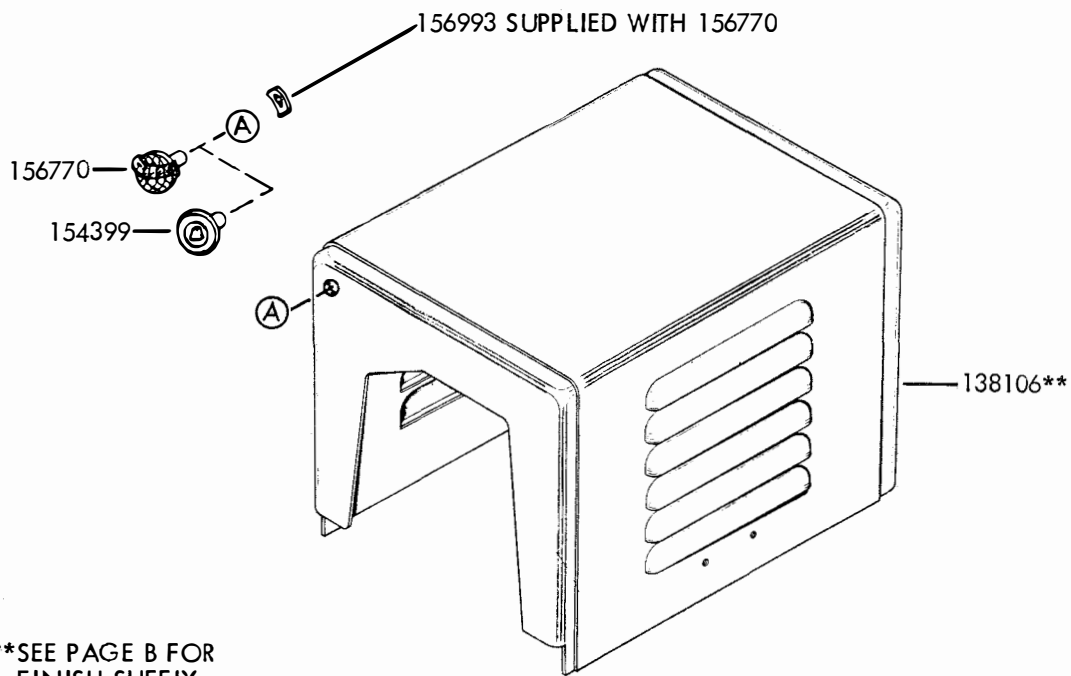
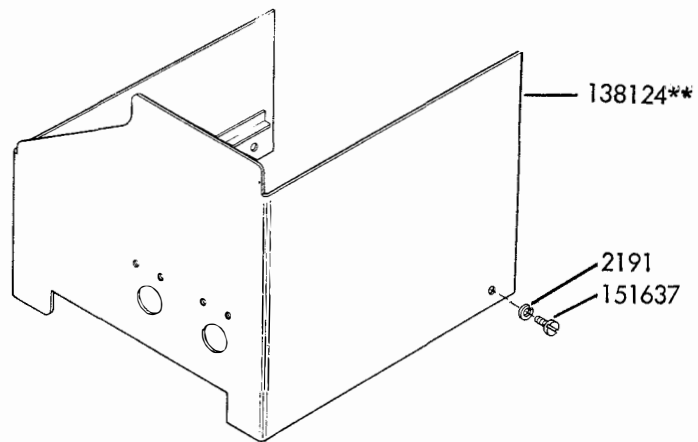
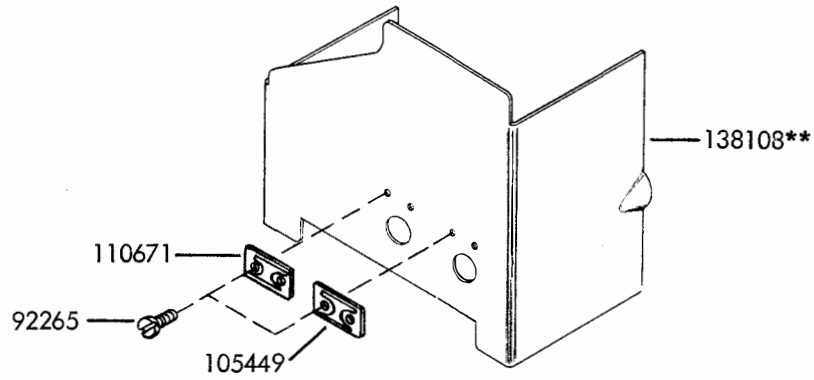
BELL SYSTEM ONLY - When ordering parts from this bulletin, prefix each number with the letters TP.



THE TAPE READER SET SHOWN ABOVE CONSISTS OF A BASE UNIT AND COVER (BXB), READER UNIT (BX) AND MOTOR UNIT (LMU).

1163B

SECTION 1
BASE UNIT AND COVER



**SEE PAGE B FOR
FINISH SUFFIX

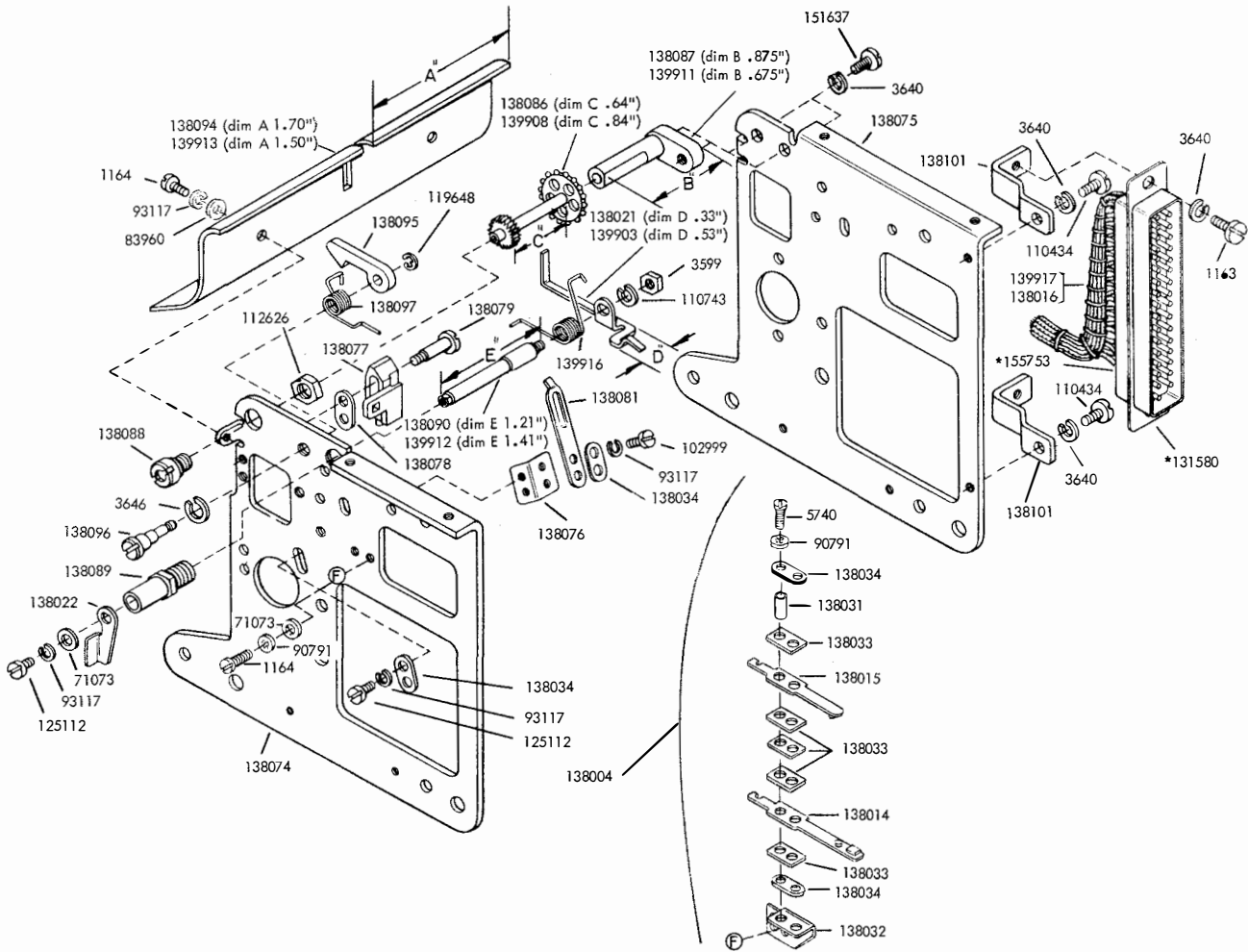
COVERS

NUMERICAL INDEX - SECTION 1

Part Number	Description and Page Number	Part Number	Description and Page Number
2191	Washer, Lock 1-2,1-4	151152	Screw (4-40 x 3/16 Hex) 1-2,1-3
2322	Washer, Lock 1-2	151346	Screw (6-40 x 3/8 Fil) 1-2
3595	Nut (1/4-32 Hex) 1-2	151618	Screw (6-40 x 7/16 Fil) 1-2
3598	Nut (6-40 Hex) 1-2	151622	Nut (6-32 Sq) 1-2
3599	Nut (4-40 Hex) 1-2,1-3	151626	Terminal 1-2,1-3
3640	Washer, Lock 1-2,1-3	151637	Screw (4-40 x 1/4 Fil) 1-4
7002	Washer, Flat 1-2	151661	Screw (6-40 x 1 Fil) 1-3
8330	Washer, Flat 1-2	151686	Screw (4-40 x 3/8 Fil) 1-2
34432	Washer, Flat 1-2,1-3	151693	Screw (6-40 x 9/16 Fil) 1-2
45815	Washer, Lock 1-2,1-3	152459	Bracket, Resistor Mounting 1-2,1-3
74036	Nut (10-32 Shoulder Hex) 1-2,1-3	153442	Screw (10-32 x 1/2 Hex) 1-2,1-3
76249	Screw (6-40 x 1/8 Fil) 1-2	154399	Plate, Identification (Bell) 1-4
78469	Foot, Rubber 1-2	154697	Grommet, Rubber 1-2,1-3
85020	Screw, Shoulder (10-32) 1-2,1-3	155750	Sleeve, Insulating 1-2,1-3
92265	Screw (2-56 x 1/8 Rd) 1-4	155753	Sleeve, Insulating 1-2,1-3
105449	Plate, Name (Motor On) 1-4	156770	Plate, Identification (Teletype) 1-4
107393	Switch, Toggle 1-2	156993	Nut, Speed 1-4
110671	Plate, Name (Tape Start) 1-4		
111284	Block, Terminal 1-2		
112675	Washer, Flat 1-2,1-3		
116783	Holder, Fuse 1-2		
118577	Clamp, Cable 1-2		
119389	Washer, Flat 1-2,1-3		
119670	Screw (6-32 x 1/2 Fil) 1-2		
121243	Clamp, Cable (3/16" ID) 1-2,1-3		
121244	Clamp, Cable (1/4" ID) 1-2		
121246	Clamp, Cable (3/8" ID) 1-3		
121575	Screw (10-32 x 5/16 Hex) 1-2,1-3		
121630	Washer, Flat 1-2		
124394	Connector, Plug (4 Pin) 1-2,1-3		
124395	Connector, Receptacle (4 Pin) 1-2		
128731	Clamp, Cable 1-2		
129919	Fuse (4 Amp) 1-2		
131516	Connector, Receptacle (37 Pt.) 1-2,1-3		
136813	Suppressor, Spark 1-2,1-3		
136823	Shell, Junction 1-3		
136824	Connector, Receptacle (35 Pin) 1-2		
136825	Connector, Plug (35 Pin) 1-2,1-3		
136885	Cover 1-2		
138106	Cover, Motor 1-4		
138107	Base (Single Reader) 1-2		
138108	Cover, End (Single Reader) 1-4		
138109	Plate, Extension 1-2,1-3		
138111	Bracket, Extension Plate 1-2		
138112	Bracket, Extension Plate 1-2,1-3		
138115	Bracket, Connector Mounting 1-2		
138116	Post 1-2		
138120	Bracket, Tape Reader Mounting 1-2		
138121	Bumper, Rubber 1-2		
138123	Base (Double Reader) 1-3		
138124	Cover, End (Double Reader) 1-4		
138132	Bracket 1-2		
138133	Bracket, Tape Reader Mounting 1-3		
138134	Relay 1-3		
138137	Resistor (1000 ohm) 1-2,1-3		
138139	Cable Assembly 1-3		
138140	Cable Assembly 1-2		
139200	Fuse (1/8 Amp) 1-2		
151073	Screw (4-40 x 5/32 Fil) 1-2,1-3		

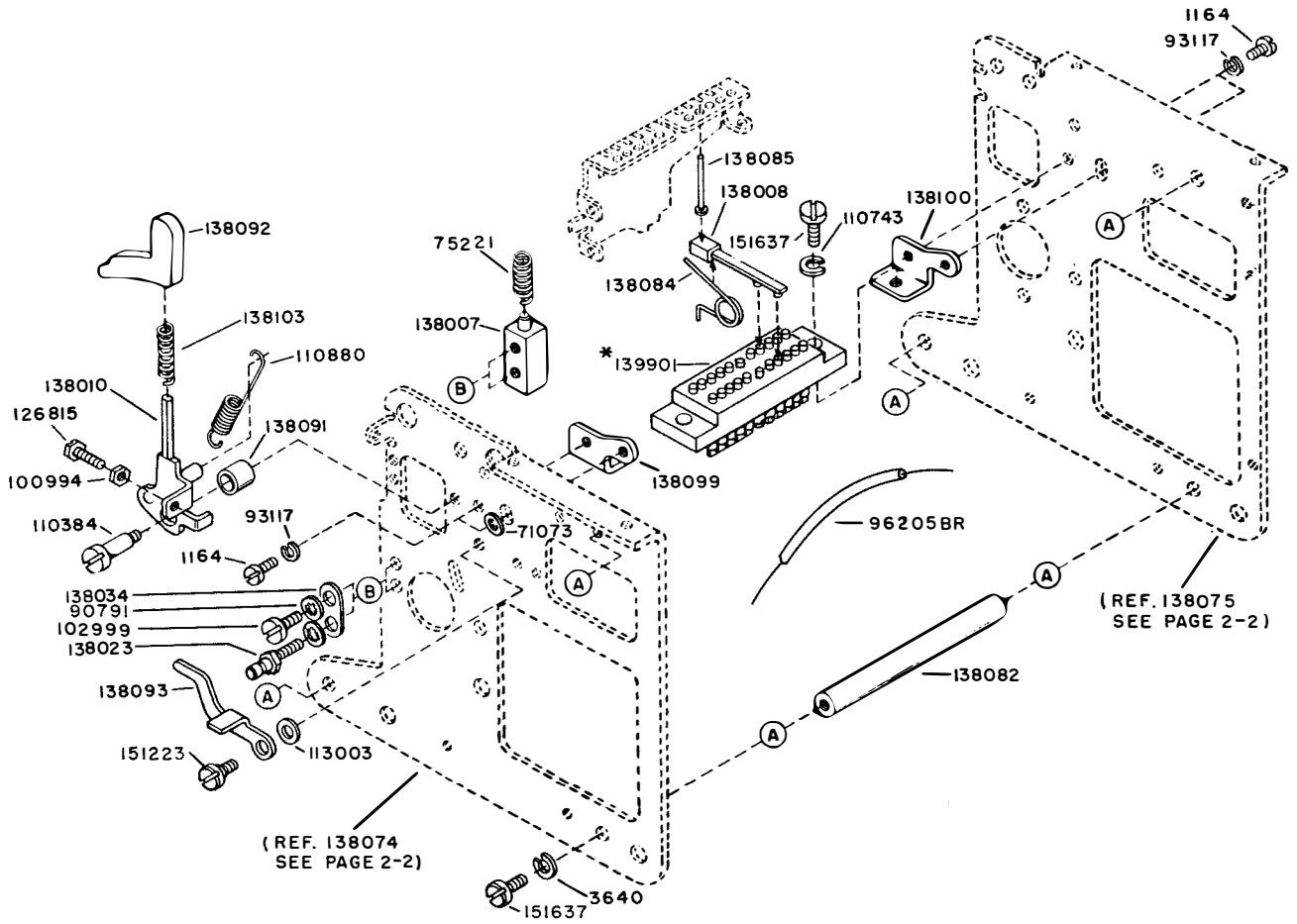


SECTION 2
TAPE READER UNIT



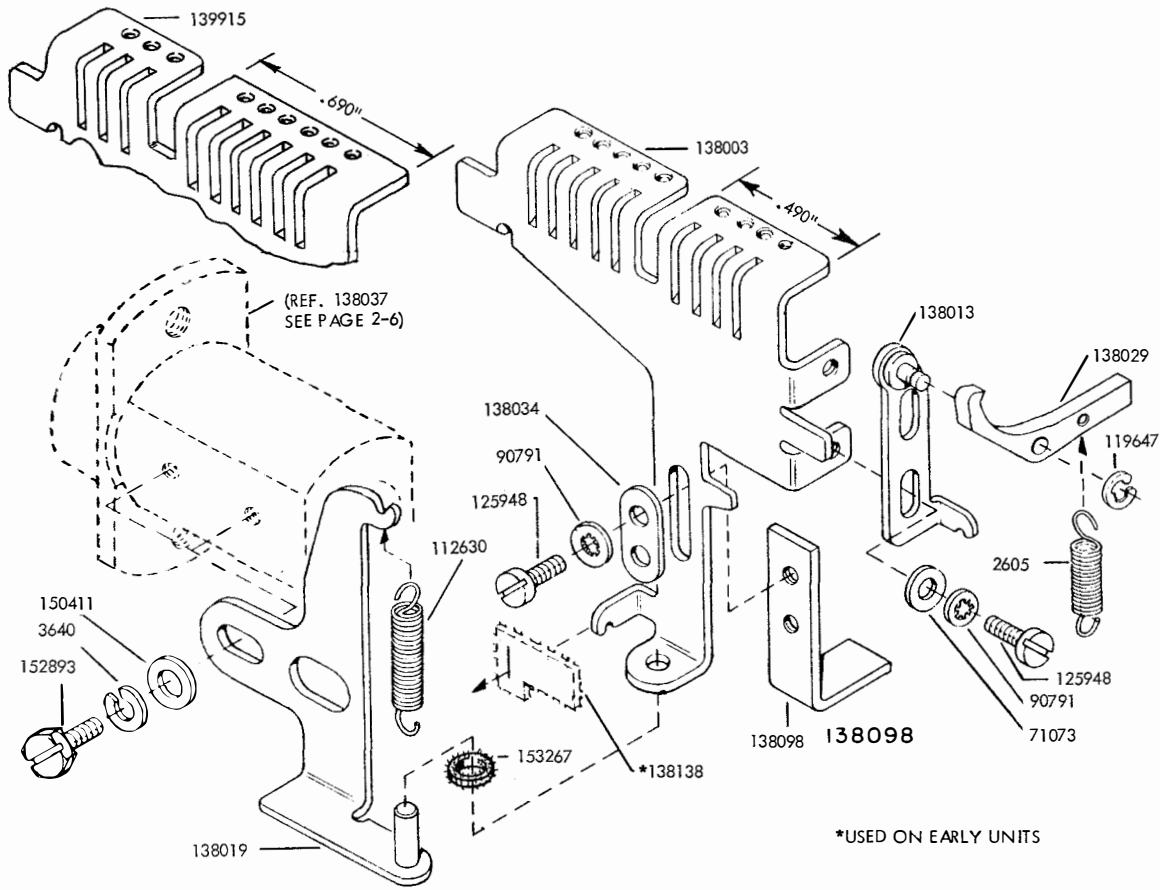
*PART OF 138016 AND 139917 CABLE ASSEMBLIES
138016 - BX1, 2, 3, 4
139917 - BX11, 12, 13, 14

SIDE PLATE MECHANISM

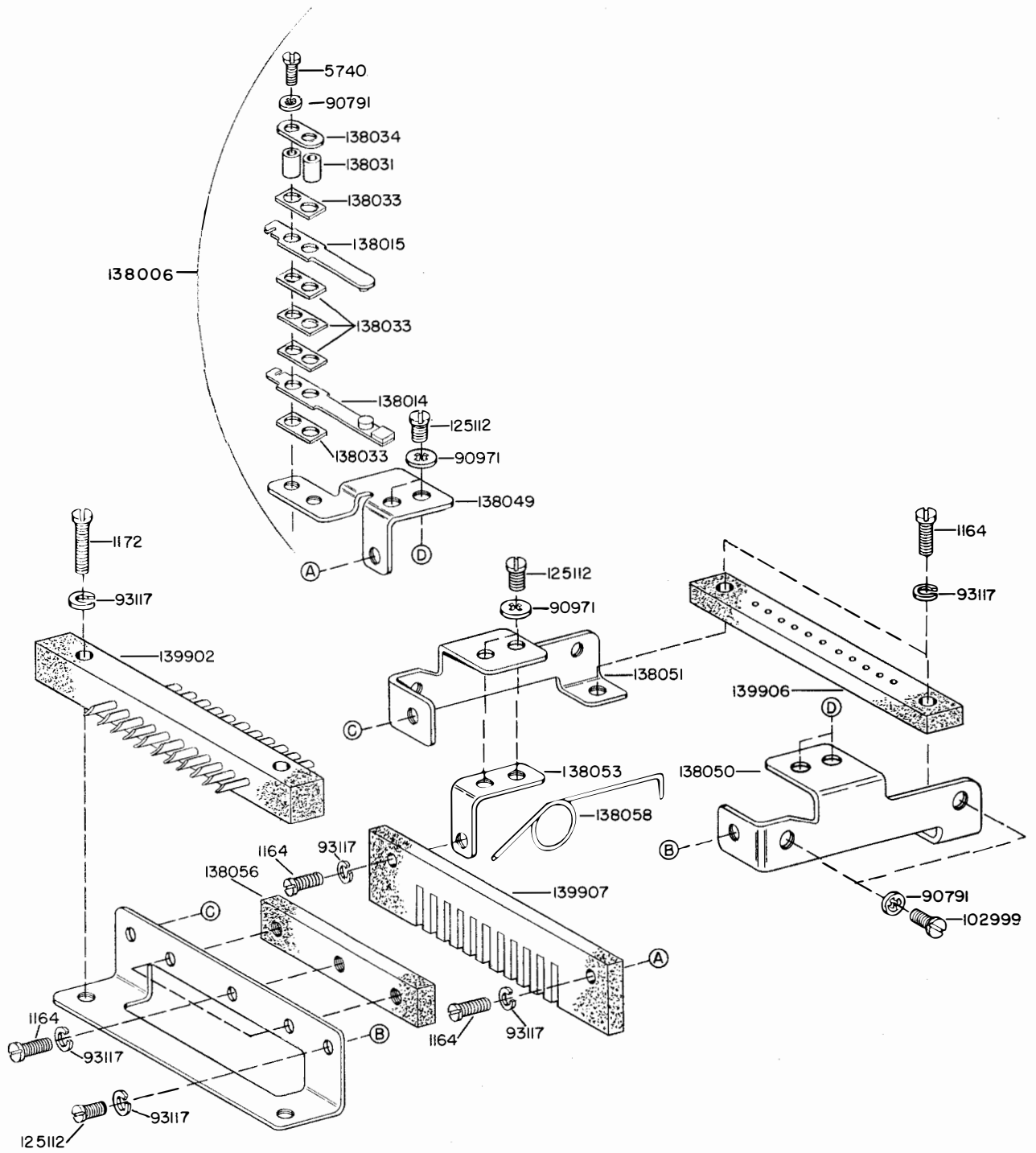


* PART OF 138016 AND 139917 CABLE ASSEMBLIES
 138016 — BX1, 2, 3, 4
 139917 — BX11, 12, 13, 14

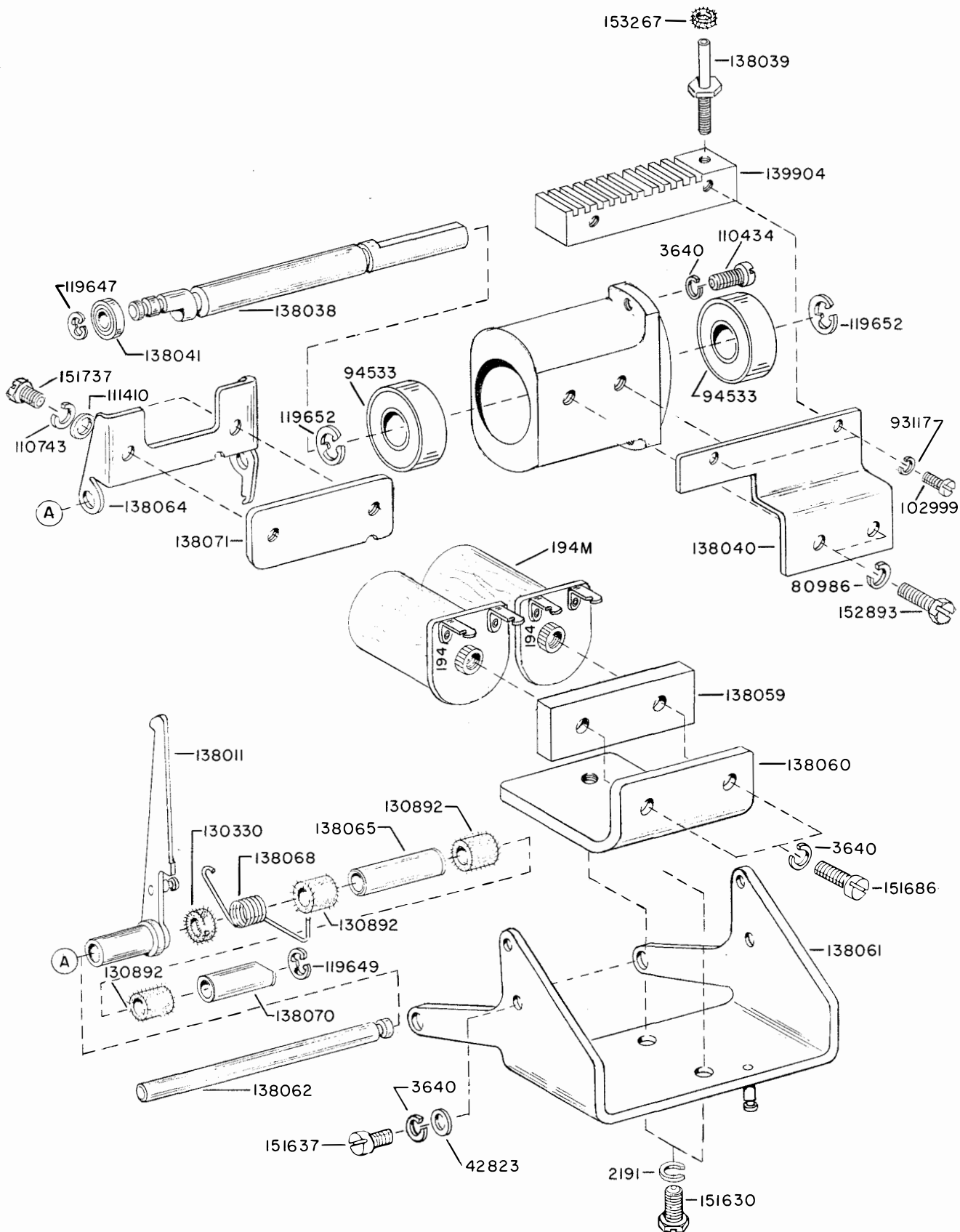
SIDE PLATE MECHANISM



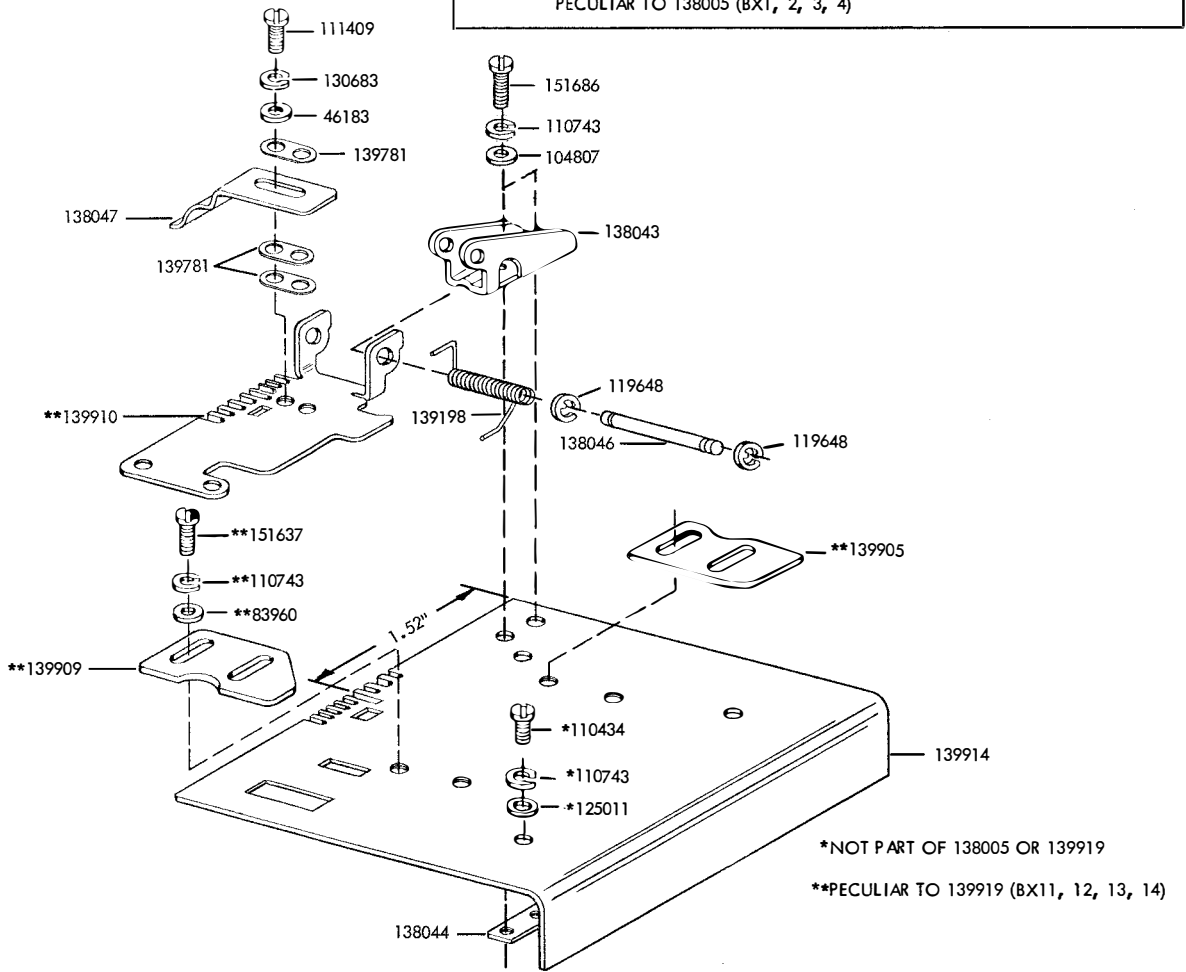
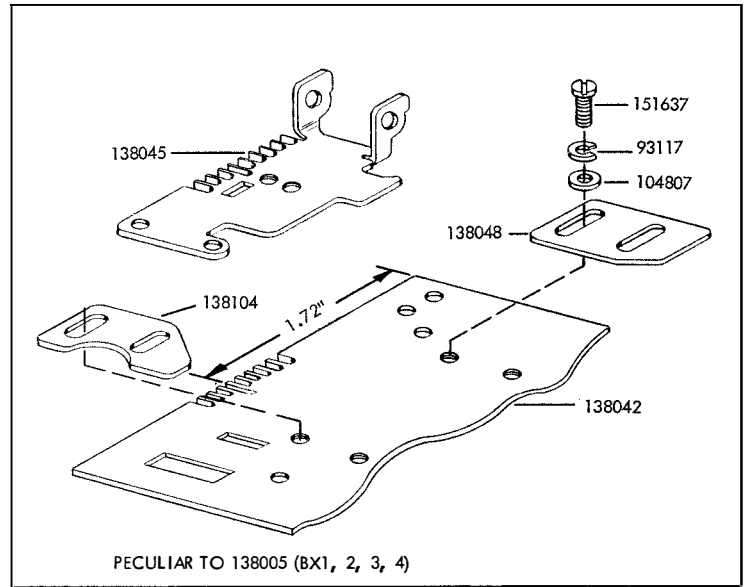
MAIN BAIL ASSEMBLY



TERMINAL BRIDGE ASSEMBLY



MAGNET AND MAIN SHAFT MECHANISMS



138005 AND 139919 TOP PLATE ASSEMBLIES

NUMERICAL INDEX - SECTION 2

Part Number	Description and Page Number	Part Number	Description and Page Number
194M	Coil, Magnet 2-6	138023	Post, Spring 2-3
1163	Screw (4-40 x 3/16 Fil) 2-2	138029	Pawl 2-4
1164	Screw (2-56 x 3/16 Fil) 2-2, 2-3, 2-5	138031	Bushing, Insulating 2-2, 2-5
1172	Screw (2-56 x 5/16 Fil) 2-5	138032	Bracket 2-2
2191	Washer, Lock 2-6	138033	Insulator 2-2, 2-5
2605	Spring 2-4	138034	Plate 2-2, 2-3, 2-4, 2-5
3599	Nut (4-40 Hex) 2-2	138037	Housing, Bearing 2-4
3640	Washer, Lock 2-2, 2-3, 2-4, 2-6	138038	Shaft 2-6
3646	Washer, Lock 2-2	138039	Guide 2-6
5740	Screw (2-56 x 1/4 Fil) 2-2, 2-5	138040	Bracket 2-6
42823	Washer, Flat 2-6	138041	Bearing 2-6
46183	Washer, Flat 2-7	138042	Plate 2-7
71073	Washer, Flat 2-2, 2-3, 2-4	138043	Pivot 2-7
75221	Spring 2-3	138044	Plate 2-7
80986	Washer, Lock 2-6	138045	Lid 2-7
83960	Washer, Flat 2-2, 2-7	138046	Pin 2-7
90791	Washer, Lock 2-2, 2-3, 2-4, 2-5	138047	Shoe 2-7
93117	Washer, Lock 2-2, 2-3, 2-5, 2-6, 2-7	138048	Guide (Right) 2-7
94533	Bearing 2-6	138049	Bracket 2-5
96205BR	Wire 2-3	138050	Bracket (Right) 2-5
100994	Nut (2-56 Hex) 2-4	138051	Bracket (Left) 2-5
102999	Screw (2-56 x 5/32 Fil) 2-2, 2-3, 2-5, 2-6	138053	Bracket 2-5
104807	Washer, Flat 2-7	138056	Insulator 2-5
110384	Screw, Shoulder (4-40) 2-3	138058	Spring 2-5
110434	Screw (4-40 x 3/16 Fil) 2-2, 2-6, 2-7	138059	Strip, Magnet 2-6
110743	Washer, Lock 2-2, 2-3, 2-6, 2-7	138060	Bracket 2-6
110880	Spring 2-3	138061	Bracket 2-6
111409	Screw (4-40 x 7/32 Fil) 2-7	138062	Shaft 2-6
111410	Washer, Flat 2-6	138064	Bracket 2-6
112626	Nut (10-32 Hex) 2-2	138065	Spacer 2-6
112630	Spring 2-4	138068	Spring 2-5
113003	Washer, Flat 2-3	138070	Spacer 2-6
119647	Ring, Retaining 2-4, 2-6	138071	Armature 2-6
119648	Ring, Retaining 2-2, 2-7	138074	Plate (Left) 2-2, 2-3
119649	Ring, Retaining 2-6	138075	Plate (Right) 2-2, 2-3
119652	Ring, Retaining 2-6	138076	Bracket 2-2
125011	Washer, Flat 2-7	138077	Guide, Bail 2-2
125112	Screw (2-56 x 1/8 Fil) 2-2, 2-5	138078	Spacer 2-2
125948	Screw (2-56 x 1/8 Fil) 2-4	138079	Screw, Shoulder (2-56) 2-2
126815	Screw (2-56 x 15/64 Hex) 2-3	138081	Detent 2-2
130330	Oiler, Felt 2-6	138082	Spacer 2-3
130683	Washer, Lock 2-7	138084	Spring 2-3
130892	Oiler, Felt 2-6	138085	Pin 2-3
131580	Connector, Plug (37 Pt.) 2-2	138086	Wheel, Feed 2-2
138003	Bail 2-4	138087	Bearing 2-2
138004	Contact Assembly 2-2	138088	Screw, Bearing (10-32) 2-2
138005	Plate Assembly, Top 2-7	138089	Housing 2-2
138006	Contact Assembly 2-5	138090	Shaft 2-2
138007	Support 2-3	138091	Spacer 2-3
138008	Bar 2-3	138092	Button 2-3
138010	Lever 2-3	138093	Lever 2-3
138011	Lever, Latch 2-6	138094	Plate 2-2
138013	Pivot 2-4	138095	Latch 2-2
138014	Spring, Contact 2-2, 2-5	138096	Pivot 2-2
138015	Spring, Contact 2-2, 2-5	138097	Spring 2-2
138016	Cable Assembly 2-2, 2-3	138098	Follower 2-4
138019	Guide 2-4	138099	Bracket (Left) 2-3
138021	Lever 2-2	138100	Bracket (Right) 2-3
138022	Arm 2-2	138101	Bracket 2-2

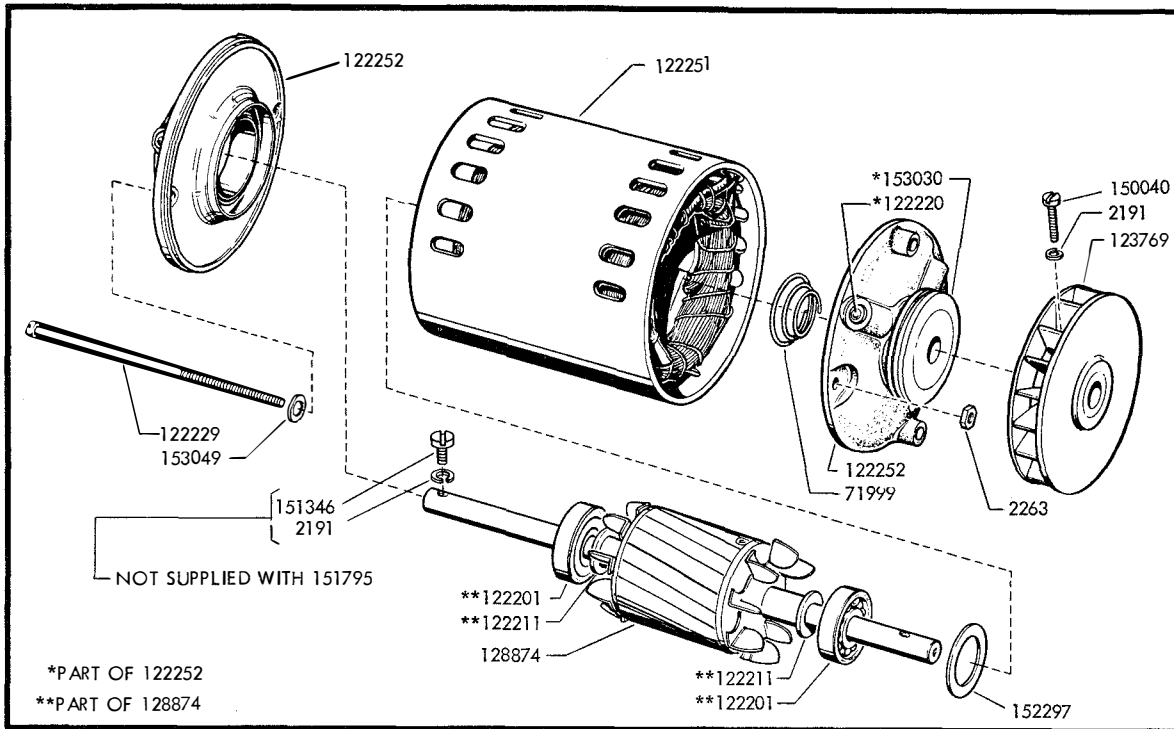
NUMERICAL INDEX - SECTION 2

Part Number	Description and Page Number
138103	Spring 2-3
138104	Guide (Left) 2-7
138138	Oiler, Felt 2-4
139198	Spring, Torsion 2-7
139781	Shim (.005") 2-7
139901	Block, Terminal 2-3
139902	Block, Terminal 2-5
139903	Lever, Tape Out 2-2
139904	Bar, Spring 2-6
139905	Guide (Right) 2-7
139906	Guide, Spring 2-5
139907	Spacer 2-5
139908	Wheel, Feed 2-2
139909	Guide (Left) 2-7
139910	Lid, Tape 2-7
139911	Bearing, Feed Wheel 2-2
139912	Shaft 2-2
139913	Plate, Front 2-2
139914	Plate 2-7
139915	Bail, Main 2-4
139916	Spring 2-2
139917	Cable Assembly 2-2, 2-3
139919	Plate Assembly, Top 2-7
150411	Washer, Flat 2-4
151223	Screw, Shoulder (4-40) 2-3
151630	Screw (6-40 x 1/4 Hex) 2-6
151637	Screw (4-40 x 1/4 Fil) 2-2, 2-3, 2-6, 2-7
151686	Screw (4-40 x 3/8 Fil) 2-6, 2-7
151737	Screw (4-40 x 11/64 Hex) 2-6
152893	Screw (4-40 x 1/4 Hex) 2-4, 2-6
153267	Washer, Felt 2-4, 2-6
155753	Sleeve, Insulating 2-2

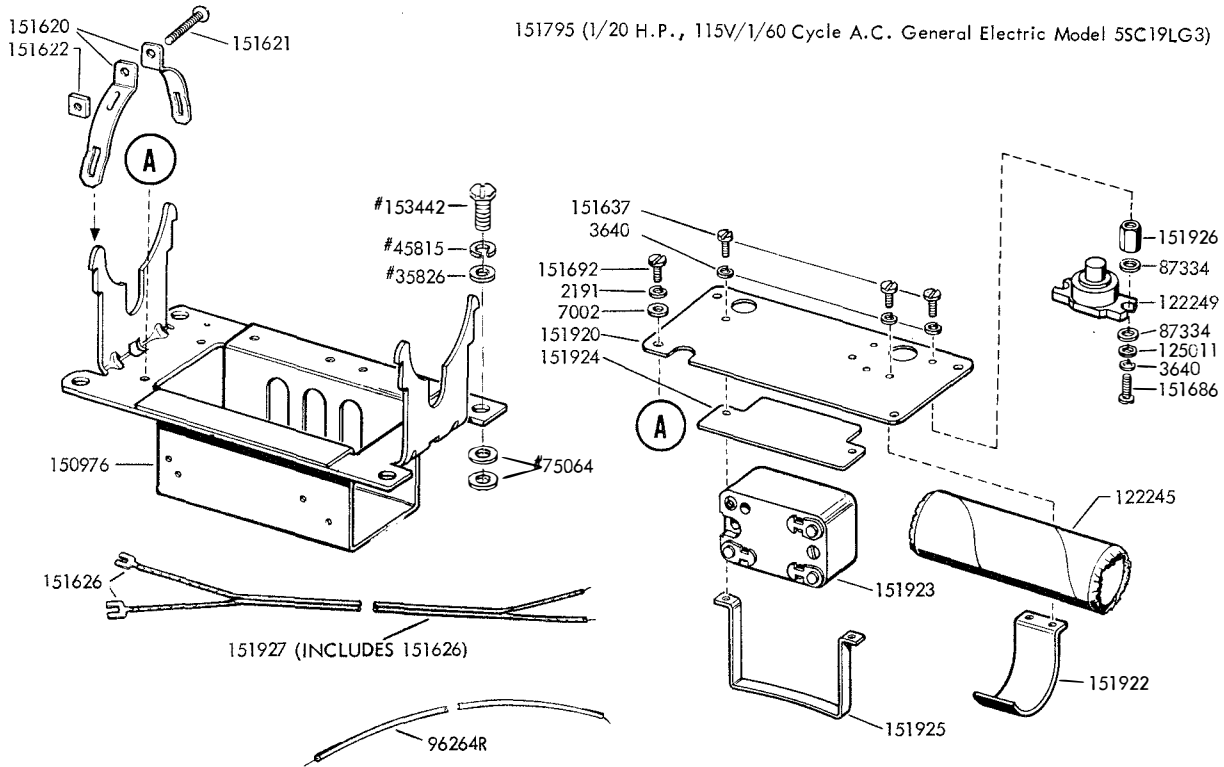


1163B

SECTION 3
MOTOR UNIT



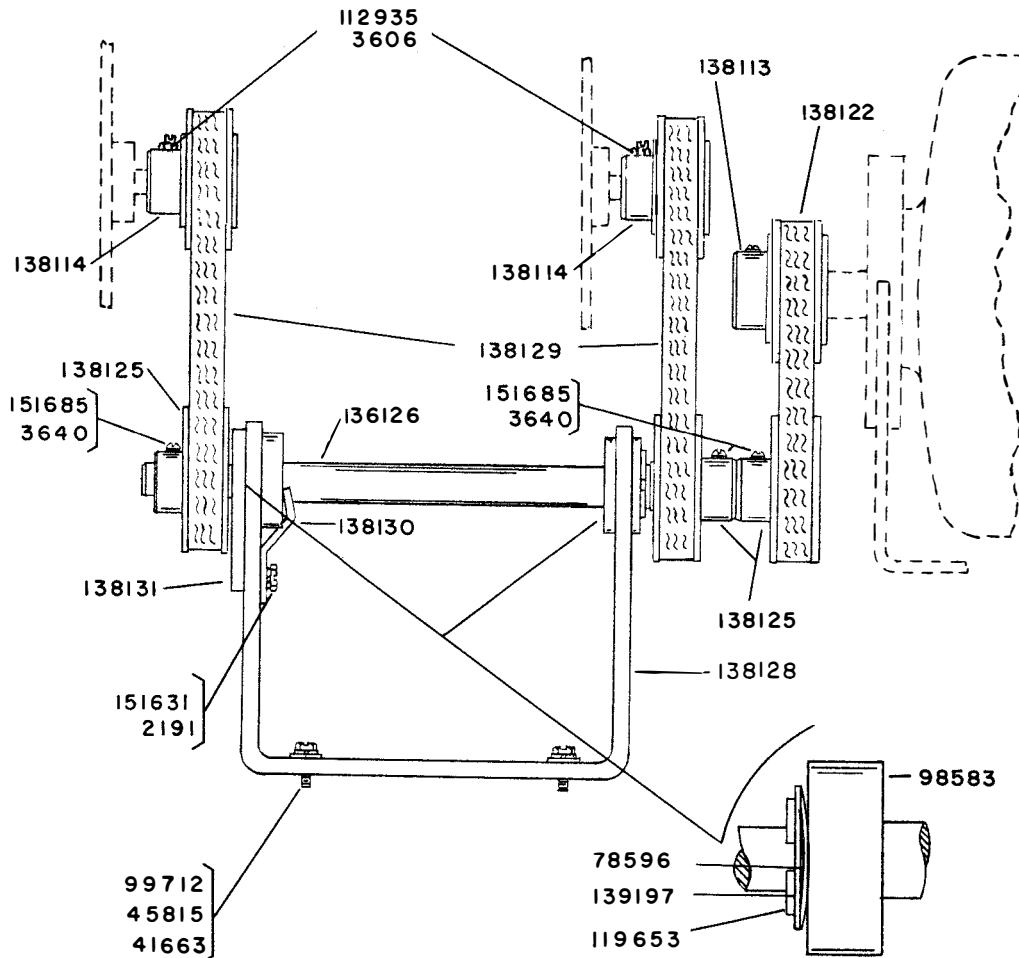
151795 (1/20 H.P., 115V/1/60 Cycle A.C. General Electric Model 55C19LG3)



#NOT PART OF LMU3

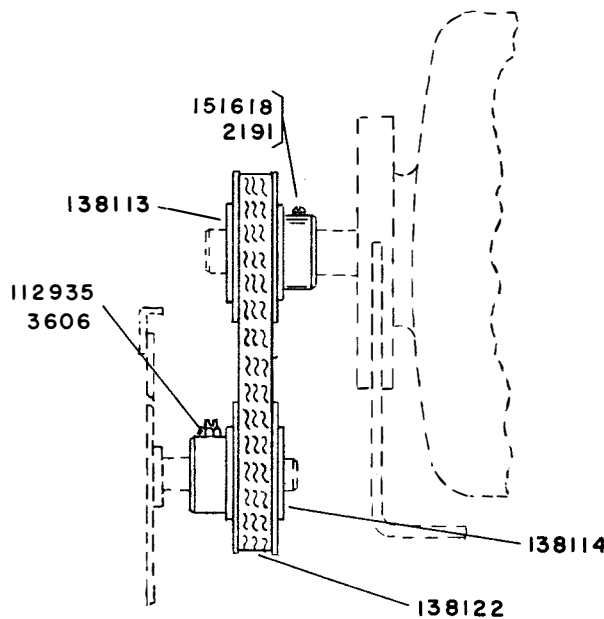
LMU3 SYNCHRONOUS MOTOR UNIT

1163B



SPECIFICATION 5855S

136019 MODIFICATION KIT TO PROVIDE MOTOR DRIVE PARTS (DOUBLE UNITS)



SPECIFICATION 5855S

136018 MODIFICATION KIT TO PROVIDE MOTOR DRIVE PARTS (SINGLE UNIT)

NUMERICAL INDEX - SECTION 3

Part Number	Description and Page Number	Part Number	Description and Page Number
2191	Washer, Lock 3-2, 3-3	151924	Insulator 3-2
2263	Nut (8-32 Hex) 3-2	151925	Clamp 3-2
3606	Nut (6-40 Hex) 3-3	151926	Nut (4-40 Spl) 3-2
3640	Washer, Lock 3-2, 3-3	151927	Cable W/Terminals 3-2
7002	Washer, Flat 3-2	152297	Washer, Flat 3-2
35826	Washer, Flat 3-2	153030	Mount, Vibration 3-2
41663	Washer, Flat 3-3	153049	Washer, Fiber 3-2
45815	Washer, Lock 3-2, 3-3	153442	Screw (10-32 x 1/2 Hex) 3-2
71999	Spring, Motor Thrust 3-2		
78596	Washer, Spring 3-3		
87334	Washer, Insulating 3-2		
96264R	Wire 3-2		
98583	Bearing, Ball 3-3		
99712	Screw (10-32 x 5/16 Hex) 3-3		
112935	Screw, Set (6-40) 3-3		
119653	Ring, Retaining 3-3		
122201	Bearing, Ball 3-2		
122211	Washer, Pull 3-2		
122220	Oiler, Ball 3-2		
122229	Screw, Clamping (8-32) 3-2		
122245	Capacitor (43-48 MF) 3-2		
122249	Switch, Thermostatic 3-2		
122251	Stator, Motor 3-2		
122252	Shield Assembly, End 3-2		
122253	Shield Assembly, End 3-2		
123769	Fan 3-2		
125011	Washer, Flat 3-2		
128874	Rotor, Motor 3-2		
136018	Modification Kit to Provide Motor Drive Parts (Single Unit) 3-3		
136019	Modification Kit to Provide Motor Drive Parts (Double Unit) 3-3		
138113	Sprocket 3-3		
138114	Sprocket 3-3		
138122	Belt 3-3		
138125	Sprocket 3-3		
138126	Countershaft 3-3		
138128	Bracket 3-3		
138129	Belt 3-3		
138130	Retainer 3-3		
138131	Plate 3-3		
139197	Washer, Flat 3-3		
150040	Screw (6-40 x 5/8 Fil) 3-2		
150976	Bracket 3-2		
151346	Screw (6-40 x 3/8 Fil) 3-2		
151618	Screw (6-40 x 7/16 Fil) 3-3		
151620	Strap 3-2		
151621	Screw (6-32 x 3/4 Rd) 3-2		
151622	Nut (6-32 Sq) 3-2		
151626	Terminal 3-2		
151631	Screw (6-40 x 5/16 Hex) 3-3		
151637	Screw (4-40 x 1/4 Fil) 3-2		
151685	Screw (4-40 x 5/16 Fil) 3-3		
151686	Screw (4-40 x 3/8 Fil) 3-2		
151692	Screw (6-40 x 3/16 Fil) 3-2		
151795	Motor, Synchronous 3-2		
151920	Plate 3-2		
151922	Clamp 3-2		
151923	Relay 3-2		

SECTION 4
MASTER NUMERICAL INDEX

MASTER NUMERICAL INDEX

Part Number	Page	Part Number	Page	Part Number	Page	Part Number	Page
194M	2-6	110880	2-3	138008	2-3	138091	2-3
1163	2-2	111284	1-2	138010	2-3	138092	2-3
1164	2-2, 2-3, 2-5	111409	2-7	138011	2-6	138093	2-3
1172	2-5	111410	2-6	138013	2-4	138094	2-2
2191	1-2, 1-4, 2-6, 3-2, 3-3	112626	2-2	138014	2-2, 2-5	138095	2-2
2263	3-2	112630	2-4	138015	2-2, 2-5	138096	2-2
2322	1-2	112675	1-2, 1-3	138016	2-2, 2-3	138097	2-2
2605	2-4	112935	3-3	138019	2-4	138098	2-4
3595	1-2	113003	2-3	138021	2-2	138099	2-3
3598	1-2	116783	1-2	138022	2-2	138100	2-3
3599	1-2, 1-3, 2-2	118577	1-2	138023	2-3	138101	2-2
3606	3-3	119389	1-2, 1-3	138029	2-4	138103	2-3
3640	1-2, 1-3, 2-2, 2-3, 2-4, 2-6, 3-2, 3-3	119647	2-4, 2-6	138031	2-2, 2-5	138104	2-7
3646	2-2	119648	2-2, 2-7	138032	2-2	138106	1-4
5740	2-2, 2-5	119649	2-6	138033	2-2, 2-5	138107	1-2
7002	1-2, 3-2	119652	2-6	138034	2-2, 2-3, 2-4, 2-5	138108	1-4
8330	1-2	119653	3-3	138037	2-4	138109	1-2, 1-3
34432	1-2, 1-3	119670	1-2	138038	2-6	138111	1-2
35826	3-2	121243	1-2, 1-3	138039	2-6	138112	1-2, 1-3
41663	3-3	121244	1-2	138040	2-6	138113	3-3
42823	2-6	121246	1-3	138041	2-6	138114	3-3
45815	1-2, 1-3, 3-2, 3-3	121575	1-2, 1-3	138042	2-6	138115	1-2
46183	2-7	121630	1-2	138043	2-7	138116	1-2
71073	2-2, 2-3, 2-4	122201	3-2	138044	2-7	138120	1-2
71999	3-2	122211	3-2	138045	2-7	138121	1-2
74036	1-2, 1-3	122220	3-2	138046	2-7	138122	3-3
75221	2-3	122229	3-2	138047	2-7	138123	1-3
76249	1-2	122245	3-2	138048	2-7	138124	1-4
78469	1-2	122249	3-2	138049	2-7	138125	3-3
78596	3-3	122251	3-2	138050	2-5	138126	3-3
80986	2-6	122252	3-2	138051	2-5	138128	3-3
83960	2-2, 2-7	122253	3-2	138053	2-5	138129	3-3
85020	1-2, 1-3	123769	3-2	138056	2-5	138130	3-3
87334	3-2	124394	1-2, 1-3	138058	2-5	138131	3-3
90791	2-2, 2-3, 2-4, 2-5	124395	1-2	138059	2-5	138132	1-2
92265	1-4	125011	2-7, 3-2	138060	2-6	138133	1-3
93117	2-2, 2-3, 2-5, 2-6, 2-7	125112	2-2, 2-5	138061	2-6	138134	1-3
94533	2-6	125948	2-4	138062	2-6	138137	1-2, 1-3
96205BR	2-3	126815	2-3	138064	2-6	138139	2-4
96264R	3-2	128731	1-2	138065	2-6	138140	1-2
98583	3-3	128874	3-2	138068	2-5	139197	3-3
99712	3-3	129919	1-2	138070	2-6	139198	2-7
100994	2-3	130330	2-6	138071	2-6	139200	1-2
102999	2-2, 2-3, 2-5, 2-6	130683	2-7	138074	2-2, 2-3	139781	2-7
104807	2-7	130892	2-6	138075	2-2, 2-3	139901	2-3
105449	1-4	131516	1-2, 1-3	138076	2-2	139902	2-5
107393	1-2	131580	2-2	138077	2-2	139903	2-2
110384	2-3	136018	3-3	138078	2-2	139904	2-6
110434	2-2, 2-6, 2-7	136019	3-3	138079	2-2	139905	2-7
110671	1-4	136813	1-2, 1-3	138081	2-2	139906	2-5
110743	2-2, 2-3, 2-6, 2-7	136823	1-3	138082	2-2	139907	2-5
		136824	1-2	138083	2-3	139908	2-2
		136825	1-2	138084	2-3	139909	2-7
		136885	1-2	138085	2-3	139910	2-7
		138003	2-4	138086	2-2	139911	2-2
		138004	2-2	138087	2-2	139912	2-2
		138005	2-7	138088	2-2	139913	2-2
		138006	2-5	138089	2-2	139914	2-7
		138007	2-3	138090	2-2	139915	2-4

MASTER NUMERICAL INDEX

Part Number	Page
139916	2-2
139917	2-2, 2-3
139919	2-7
150040	3-2
150411	2-4
150976	3-2
151073	1-2
151152	1-2, 1-3
151223	2-3
151346	1-2, 3-2
151618	1-2, 3-3
151620	3-2
151621	3-2
151622	1-2, 3-2
151626	1-2, 1-3, 3-2
151630	2-6
151631	3-3
151637	1-4, 2-2, 2-3, 2-6, 2-7, 3-2
151661	1-3
151685	3-3
151686	1-2, 2-6, 2-7, 3-2
151692	3-2
151693	1-2
151737	2-6
151795	3-2
151920	3-2
151922	3-2
151923	3-2
151924	3-2
151925	3-2
151926	3-2
151927	3-2
152297	3-2
152459	1-2, 1-3
152893	2-4, 2-6
153030	3-2
153049	3-2
153267	2-4, 2-6
153442	1-2, 1-3, 3-2
154399	1-4
154697	1-2, 1-3
155750	1-2, 1-3, 2-2
155753	1-2, 1-3, 2-2
156770	1-4
156993	1-4

