

RECTIFIERS FOR TELETYPEWRITER STATION APPARATUS

WIRING DIAGRAM

CONTENTS	PAGE	CONTENTS	PAGE
1. GENERAL	1	KS-15620, List 12.....	21
2. RECTIFIER CIRCUIT SCHEMATICS.	2	KS-15898, List 1.....	21
KS-5300, List 1, List 3 (both		J70124H, List 1.....	22
Mfr Disc.)	2	J86205J, List 1 (Mfr Disc.)	22
KS-5536, List 1 (Mfr Disc.).....	2	J86256A, List 1.....	23
KS-5536, O1 (Mfr Disc.)	3	J86256B, List 1 (Mfr Disc.) List 2	23
KS-5579, List 1 (Mfr Disc.).....	3	J87215A, List 1.....	24
KS-5663, List 1 (Mfr Disc.).....	4	REC-13, 14 (both Mfr Disc.)	24
KS-5663, List 2, List 3 (both		REC-36, (Mfr Disc.)	25
Mfr Disc.)	4	TP170573	25
KS-5663, List 4 (Mfr Disc.),			
List 5, List 7.....	4	1. GENERAL	
KS-5663, List 6	5	1.01 This section shows the wiring schematics	
KS-5663, List 8	5	for rectifiers specified for use with Oper-	
KS-5663, List 9	6	ating Company owned teletypewriter station	
KS-5663, List 10	7	apparatus. Also covered are some common	
KS-5740, List 1, List 2 (both		types of rectifiers associated with customer-	
Mfr Disc.)	8	owned Teletypewriter station apparatus that may	
KS-5769, List 1 (Mfr Disc.).....	8	be maintained by Operating Company personnel.	
KS-5769, List 2 (Mfr Disc.).....	9	1.02 Abbreviations: In this section Mfr Disc.	
KS-5769, List 3	10	means Manufacture Discontinued, and Std	
KS-5928, List 1 (Mfr Disc.)List 2	11	means Standard.	
KS-5928, List 3 (Mfr Disc.).....	12	1.03 The schematic drawings for rectifiers	
KS-5928, List 4 (Mfr Disc.).....	12	not included in this section are as follows:	
KS-5928, List 6 (Mfr Disc.).....	13		
KS-5928, List 7.....	13	J70126A, List 1 and List 2 - SD-70854-01	
KS-5928, List 8.....	14	J70126B, List 1	- SD-70853-01
KS-5988, List 1.....	14	J86207U, List 1 and List 2 - SD-70871-01	
KS-15523, List 1 (Mfr Disc.).....	15	J86207W, List 1	- SD-80937-01
KS-15523, List 4.....	15	J86489A, List 1	- SD-81456-01
KS-15620, List 1 (Mfr Disc.).....	16		
KS-15620, List 2 (Mfr Disc.).....	16	The TP151999, TP152950, and TP162361 recti-	
KS-15620, List 3 (Mfr Disc.).....	17	fier assemblies are so simple in design that no	
KS-15620, List 4 (Mfr Disc.).....	17	schematics have been included for them. No	
KS-15620, List 6	18	schematic drawing is available on the TP145204	
KS-15620, List 7 (Mfr Disc.).....	19	rectifier. Information on it can be obtained	
KS-15620, List 8.....	19	from the Power Equipment Company, (Galion,	
KS-15620, List 9.....	20	Ohio) catalog No. PEC 2564.	
KS-15620, List 10.....	20		

2. RECTIFIER CIRCUIT SCHEMATICS

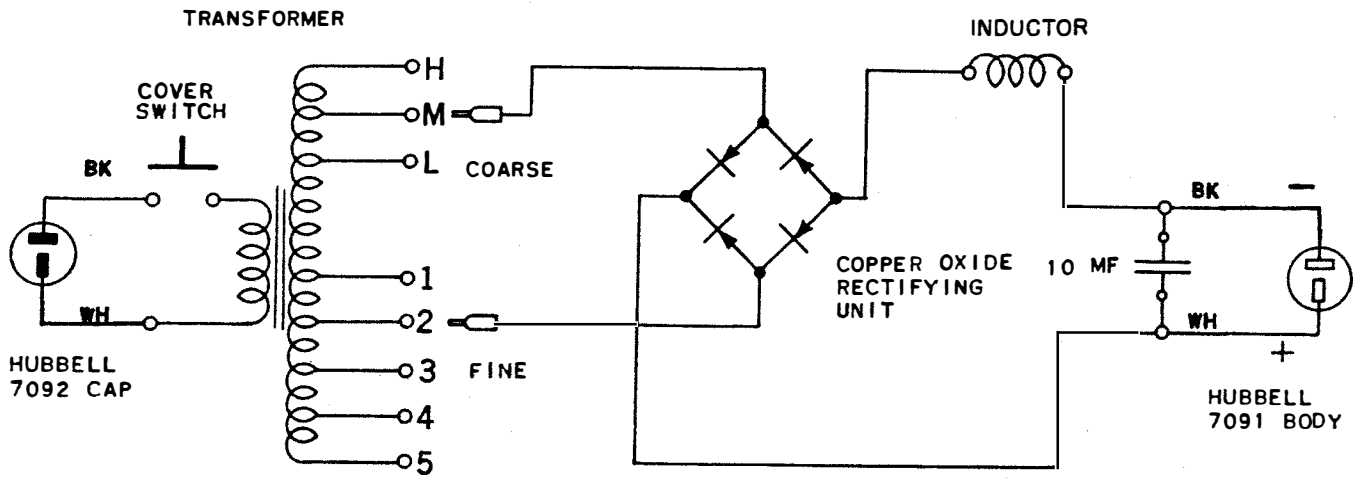


Figure 1 - KS-5300, List 1 and List 3 (both Mfr Disc.) - Circuit Schematic

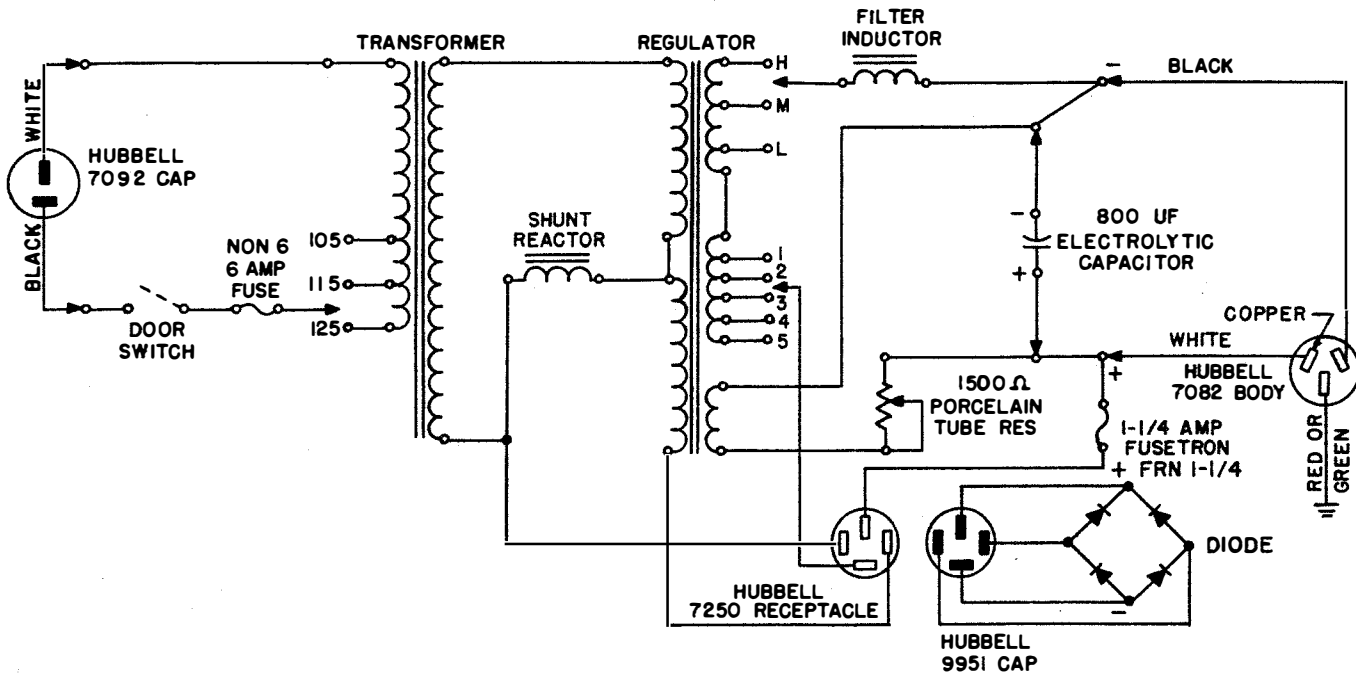


Figure 2 - KS-5536, List 1 (Mfr Disc.) - Circuit Schematic

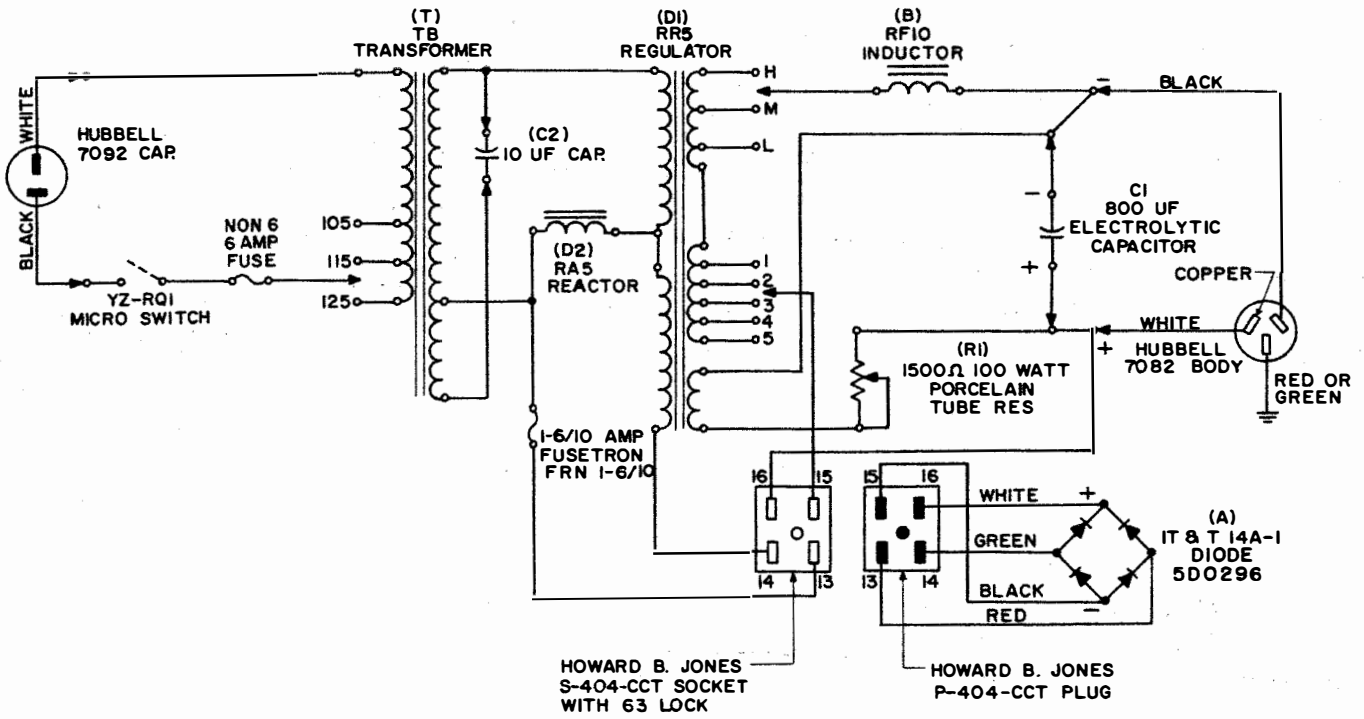


Figure 3 - KS-5536, O1 (Mfr Disc.) - Circuit Schematic

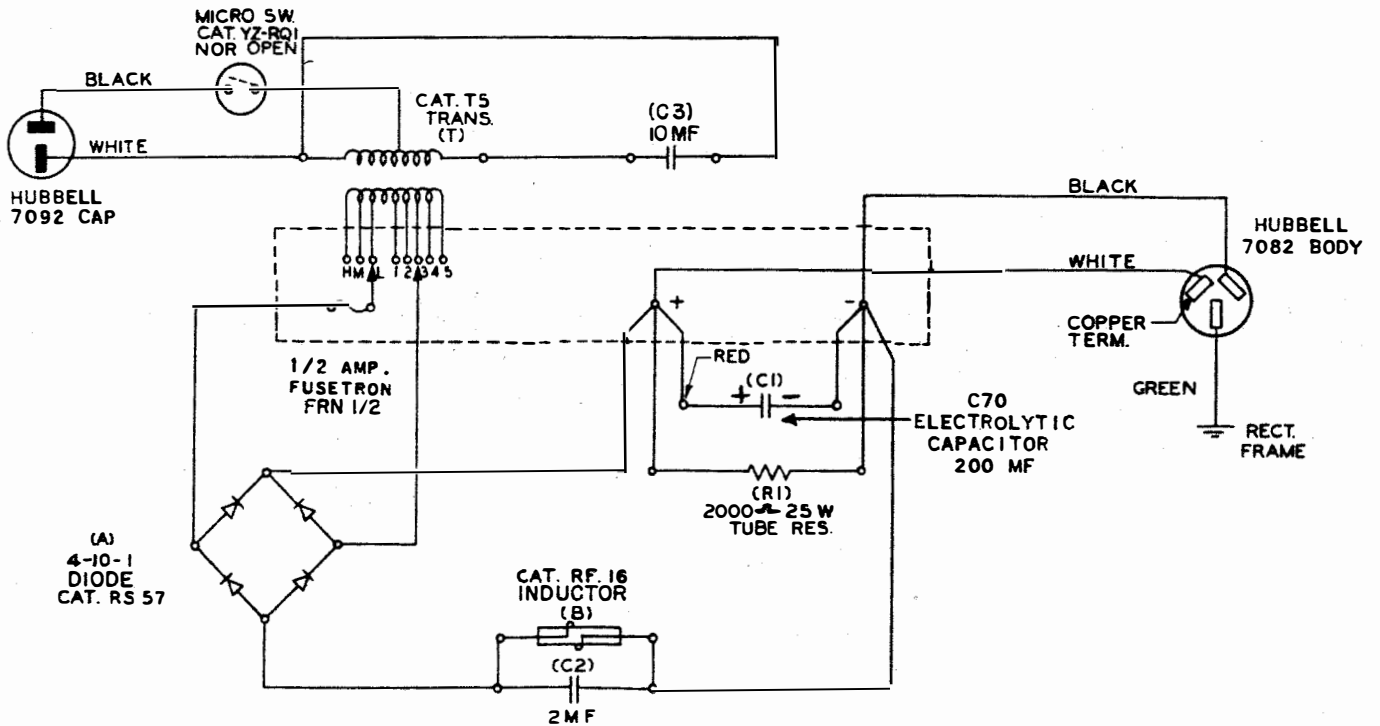


Figure 4 - KS-5579, List 1 (Mfr Disc.) - Circuit Schematic

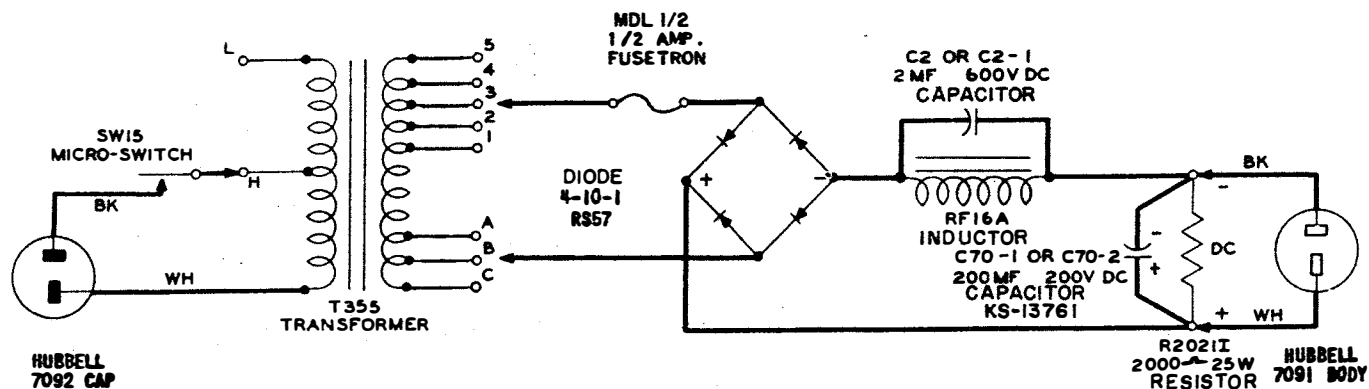


Figure 5 - KS-5663, List 1 (Mfr Disc.) - Circuit Schematic

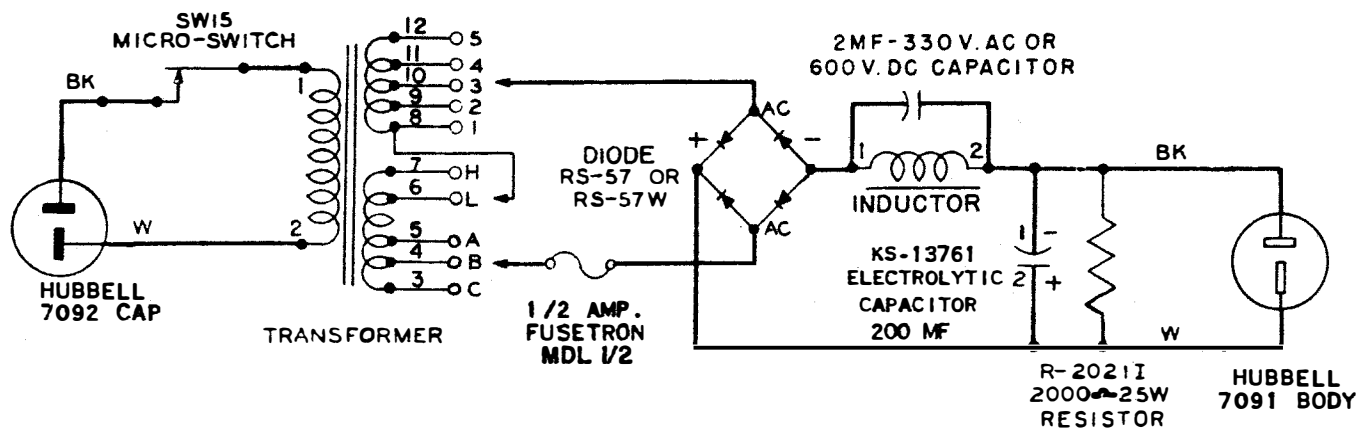


Figure 6 - KS-5663, List 2 (Mfr Disc.) and List 3 (Mfr Disc.) - Circuit Schematic

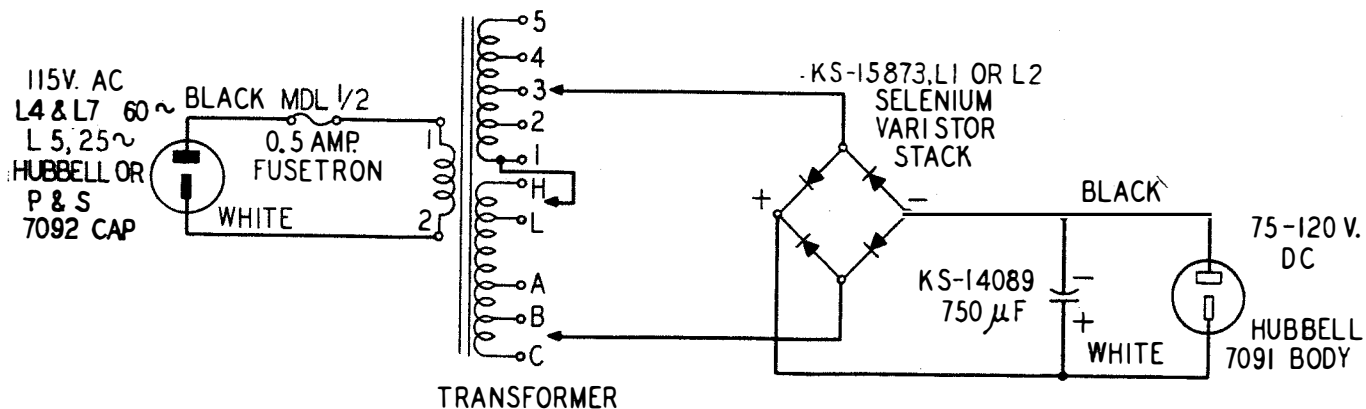


Figure 7 - KS-5663, List 4 (Mfr Disc.), List 5, and List 7 - Circuit Schematic

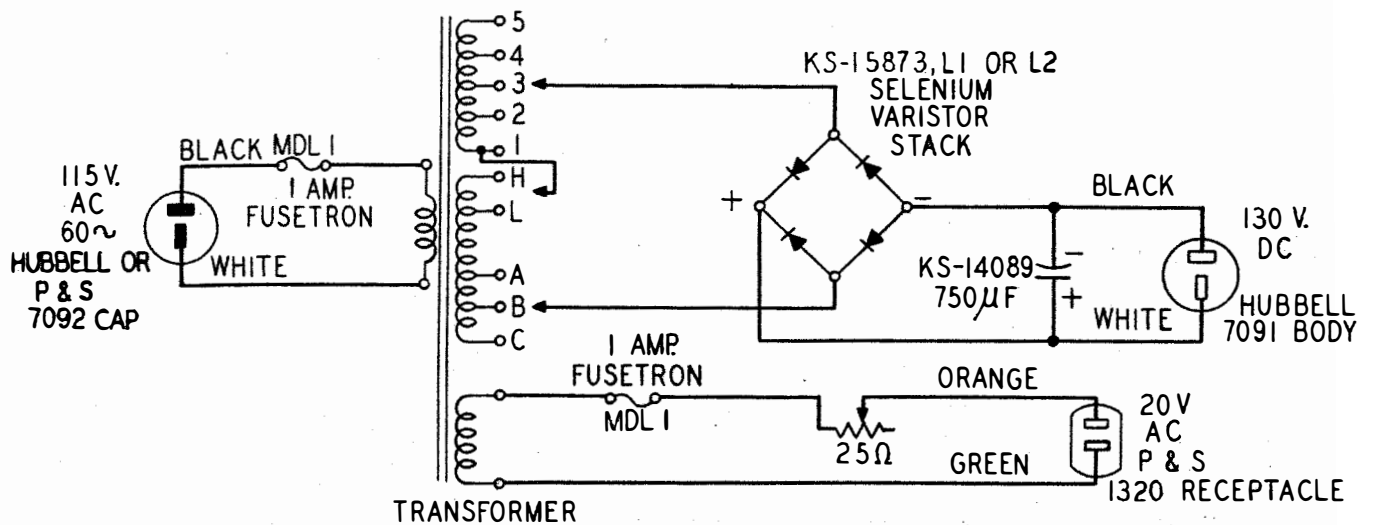


Figure 8 - KS-5663, List 6 - Circuit Schematic

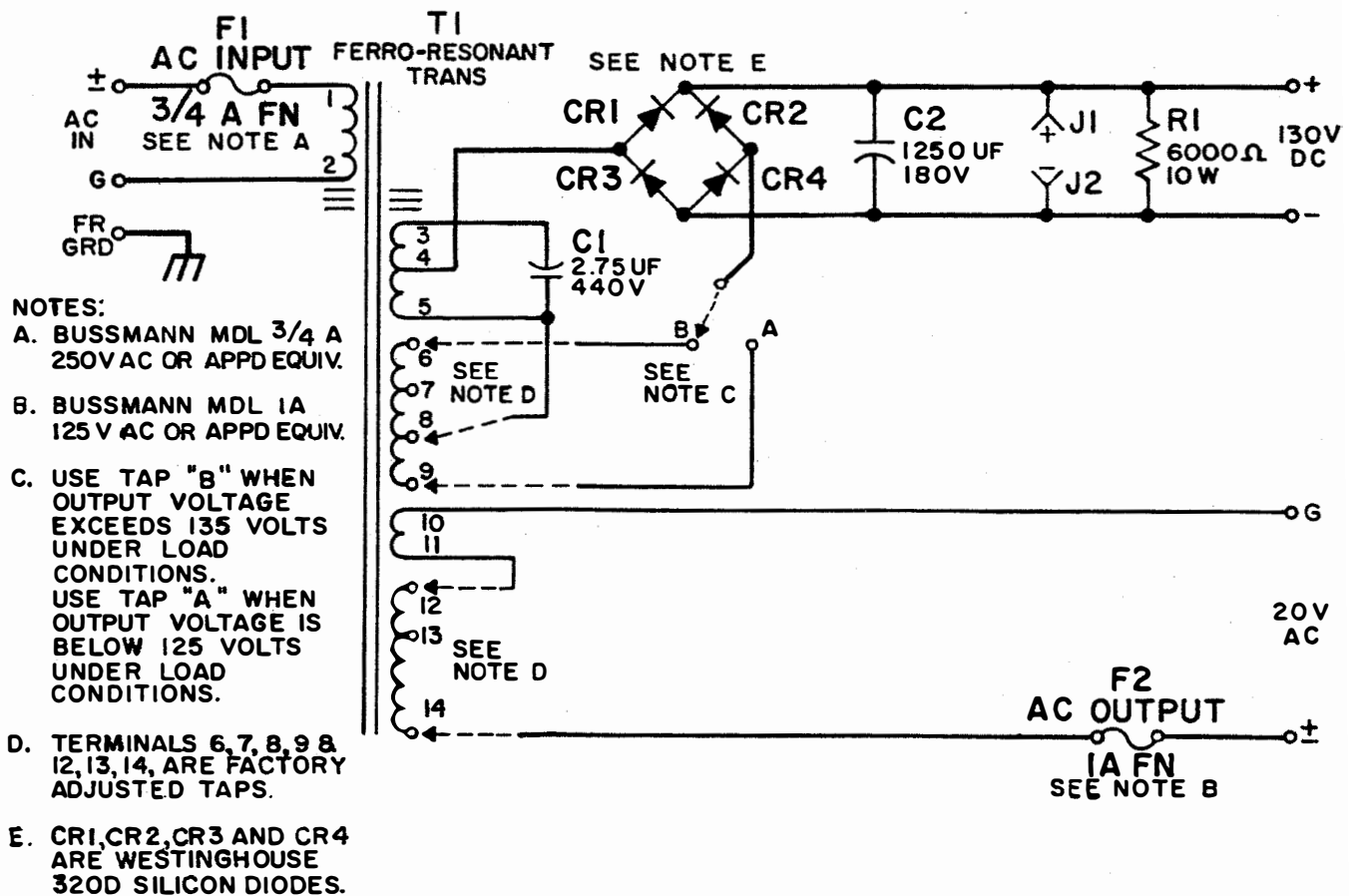


Figure 9 - KS-5663, List 8 - Circuit Schematic

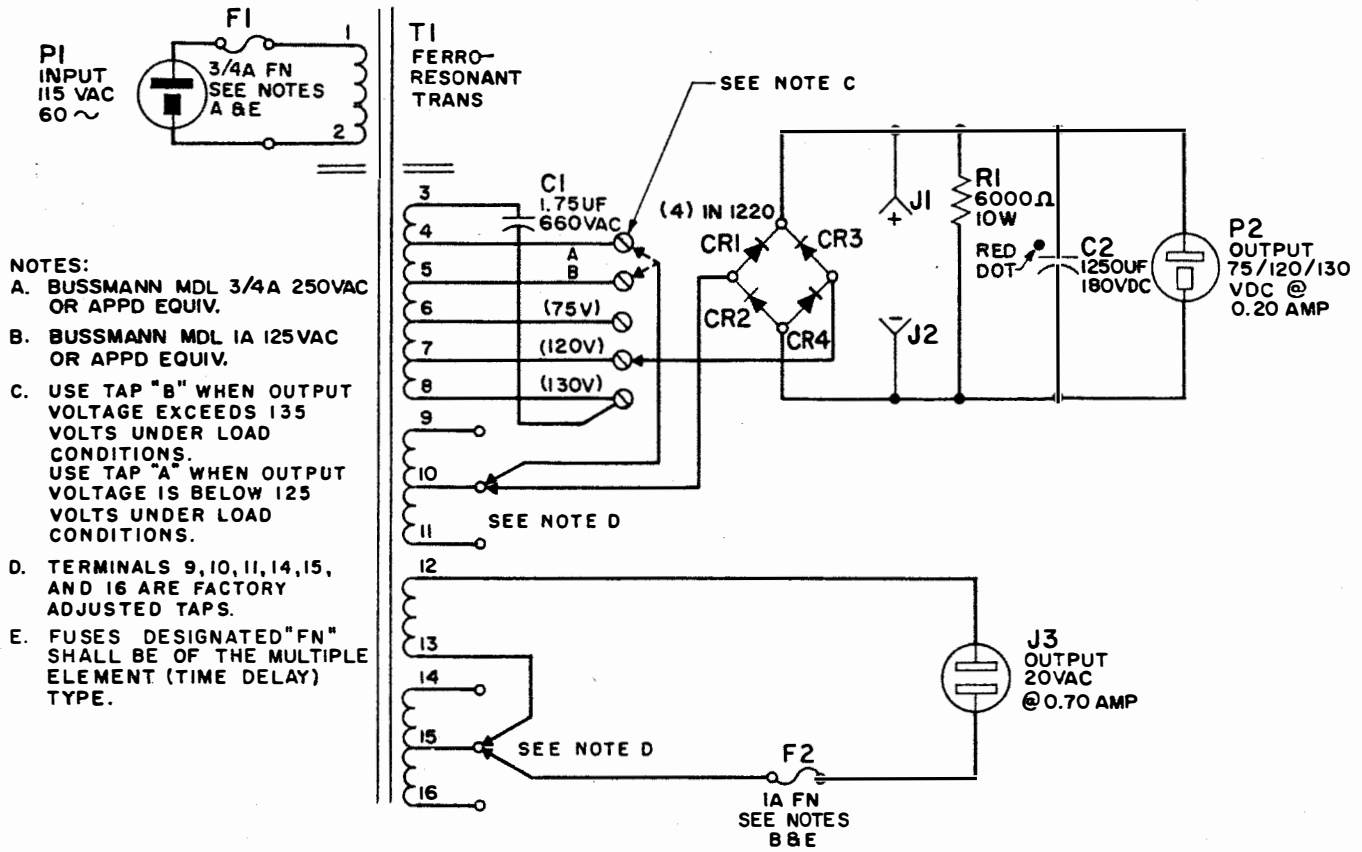


Figure 10 - KS-5663, List 9 - Circuit Schematic

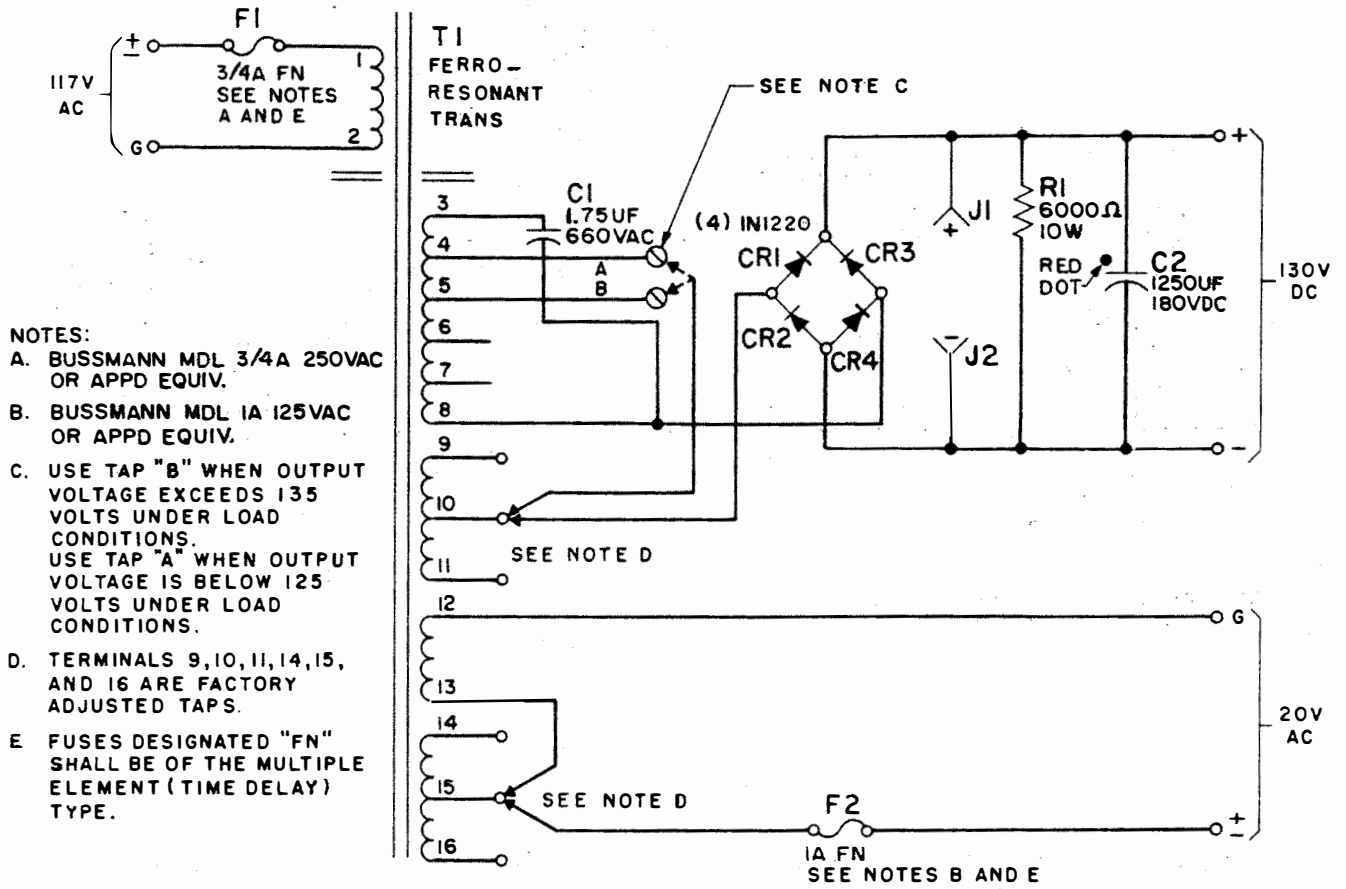


Figure 11 - KS-5663, List 10 - Circuit Schematic

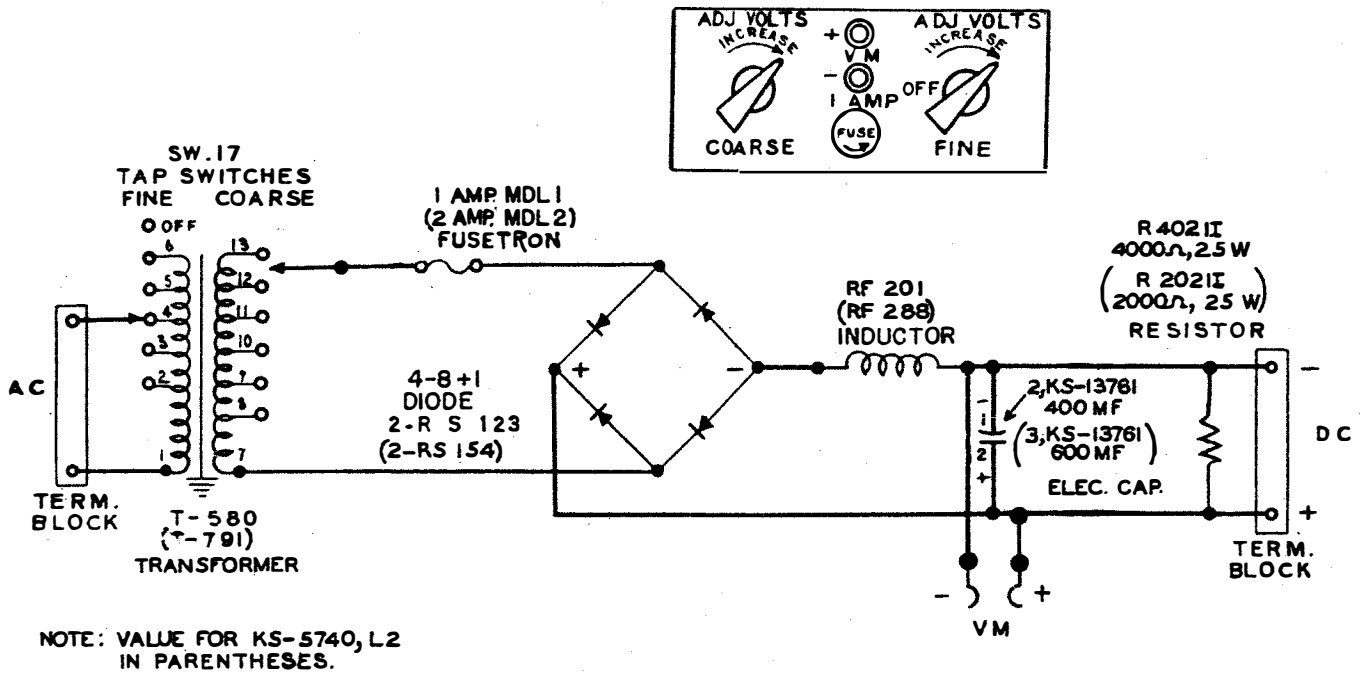


Figure 12 - KS-5740 (Mfr Disc.), List 1 and List 2 (Mfr Disc.) - Circuit Schematic

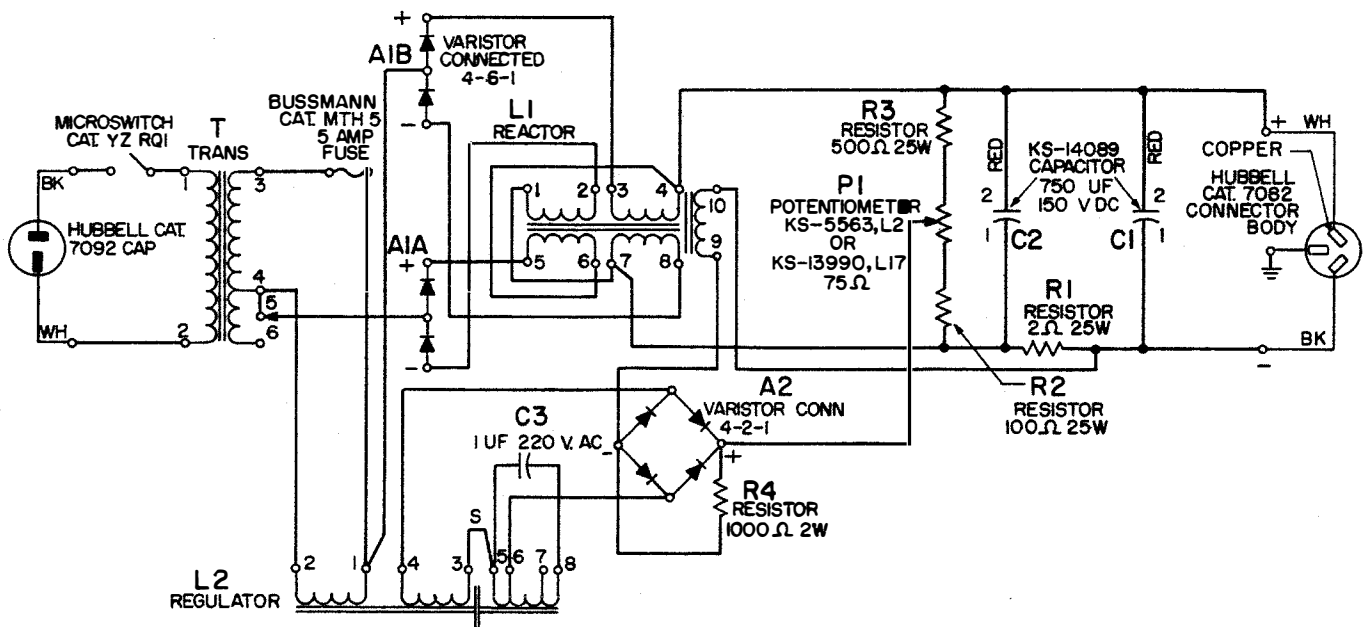


Figure 13 - KS-5769, List 1 (Mfr Disc.) - Circuit Schematic

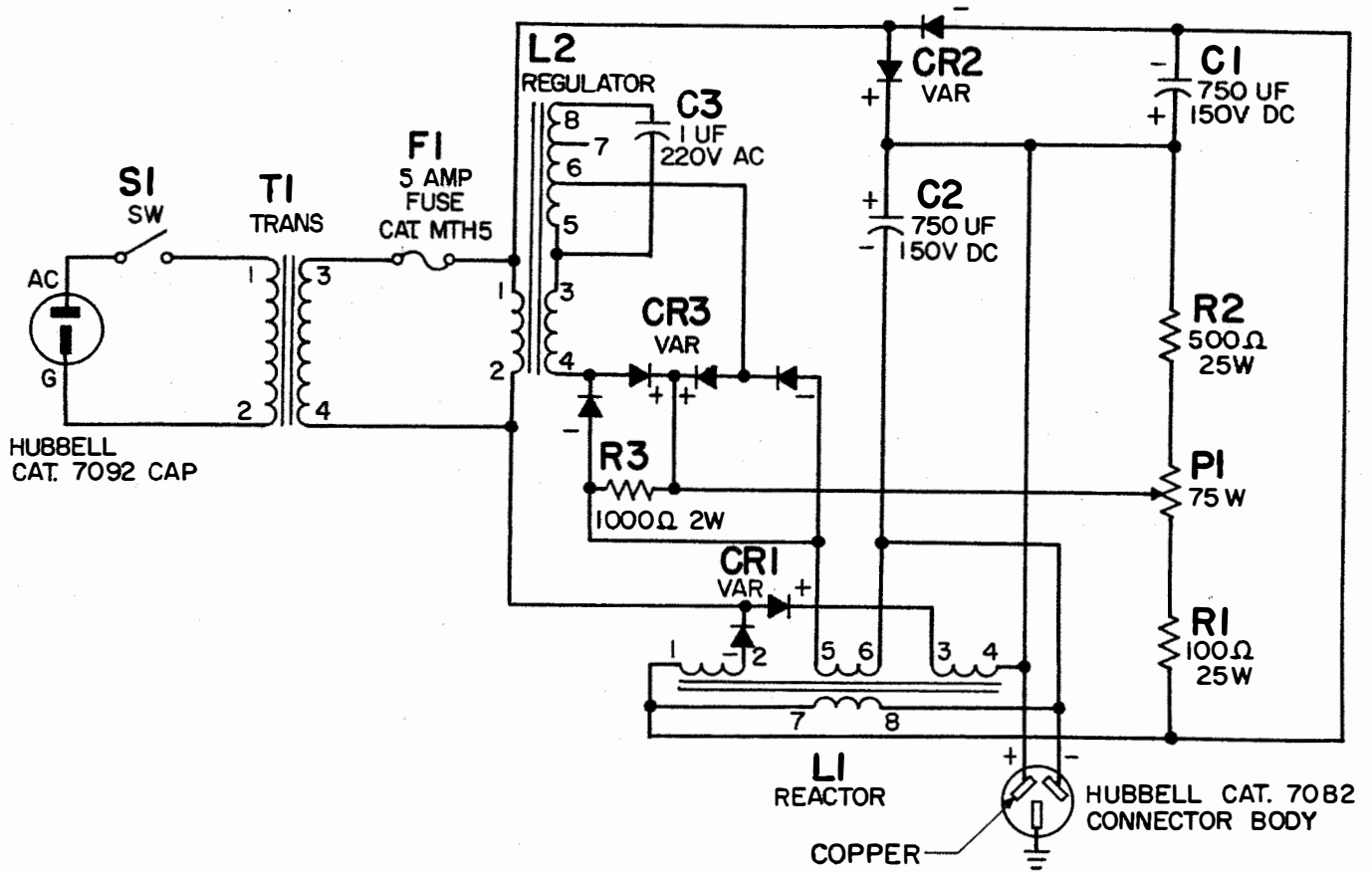


Figure 14 - KS-5769, List 2 (Mfr Disc.) - Circuit Schematic

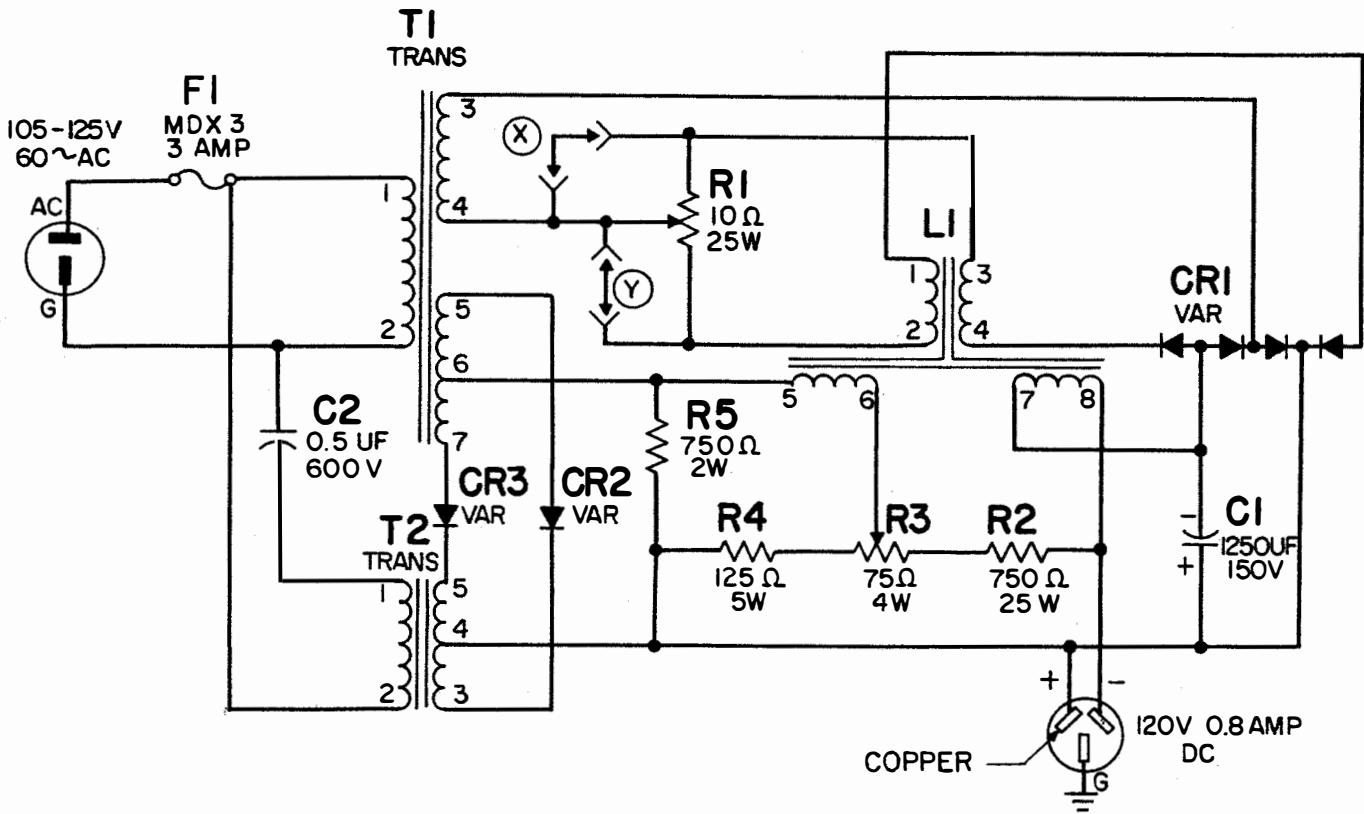


Figure 15 - KS-5769, List 3 - Circuit Schematic

Note: Options X and Y are for manufacturer's use and are not to be changed in the field.

NOTES:

1 THE REGULATOR AND REACTOR COILS SHALL BE DESIGNATED RR5 AND RA5 RESPECTIVELY FOR LIST 1 AND RR11 AND RA11 RESPECTIVELY FOR LIST 2.

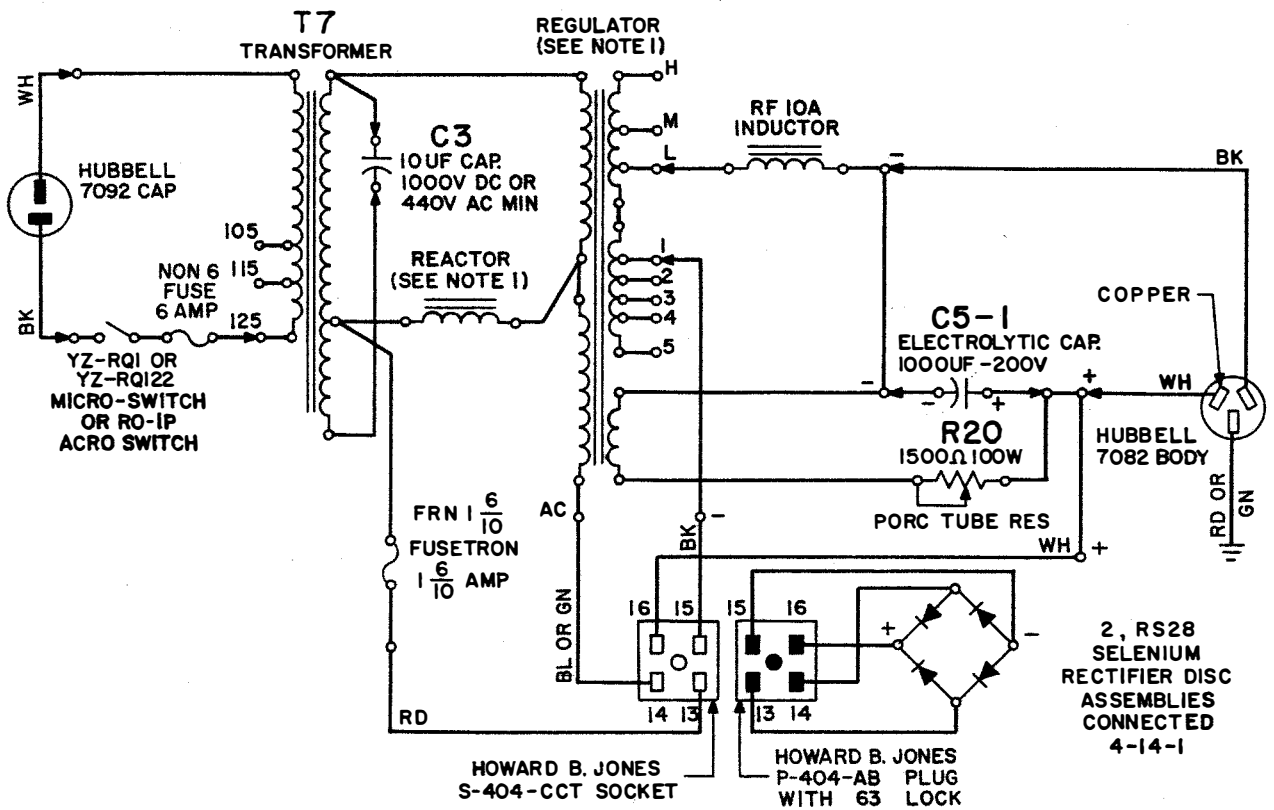


Figure 16 - KS-5928, List 1 (Mfr Disc.) and List 2 - Circuit Schematic

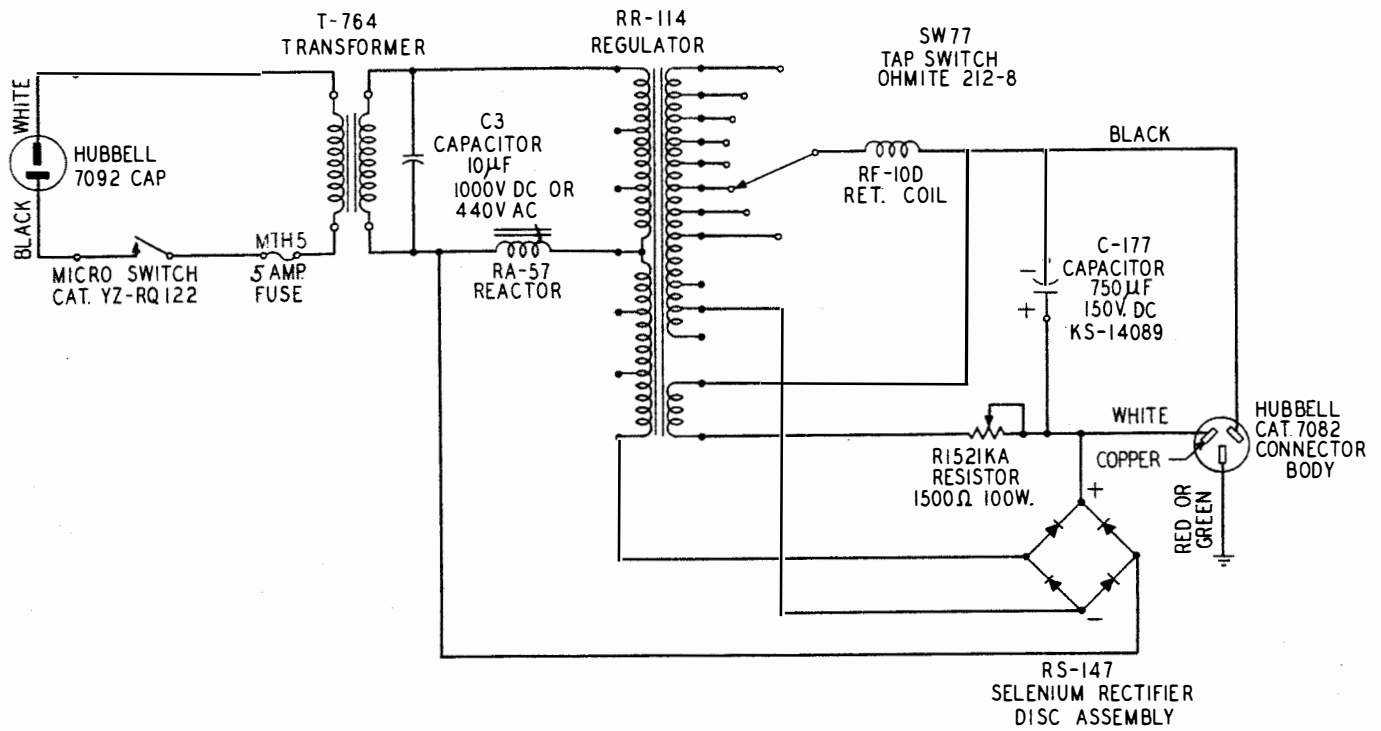


Figure 17 - KS-5928, List 3 (Mfr Disc.) - Circuit Schematic

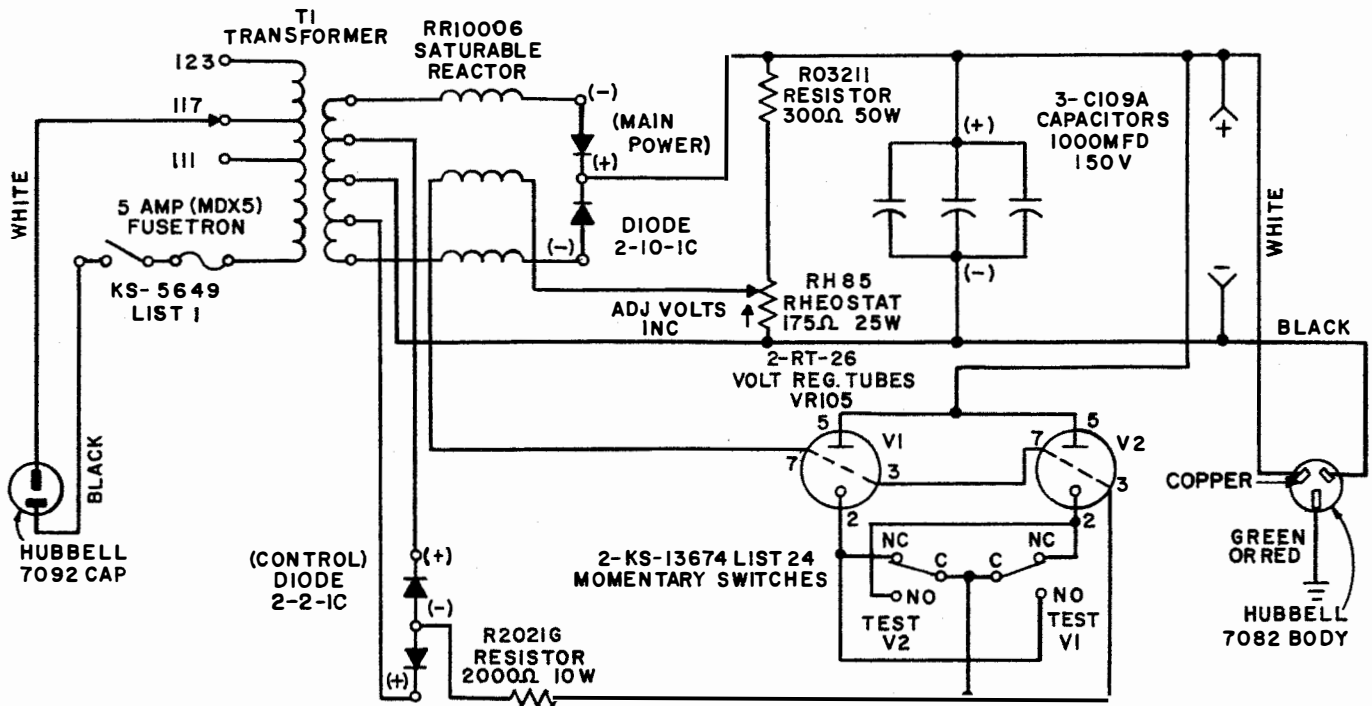


Figure 18 - KS-5928, List 4 (Mfr Disc.) - Circuit Schematic

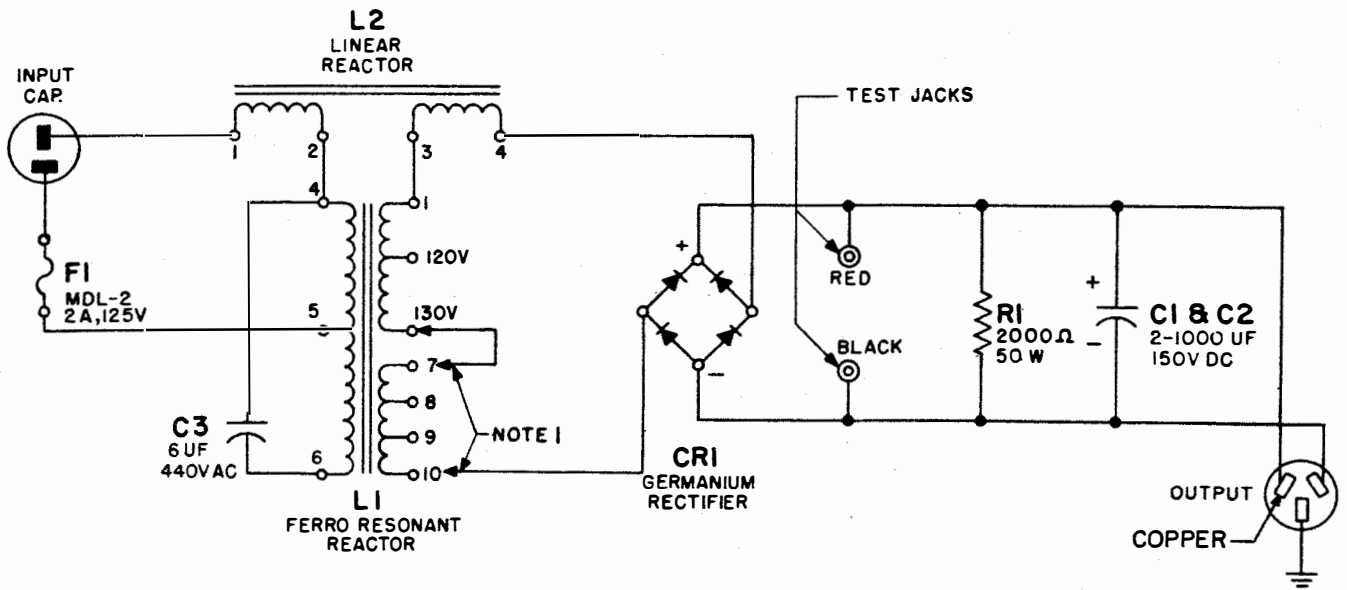


Figure 19 - KS-5928, List 6 (Mfr Disc.) - Circuit Schematic

Note 1: Terminals 7, 8, 9, and 10 of the reactor are set by the manufacturer and shall not be changed in the field.

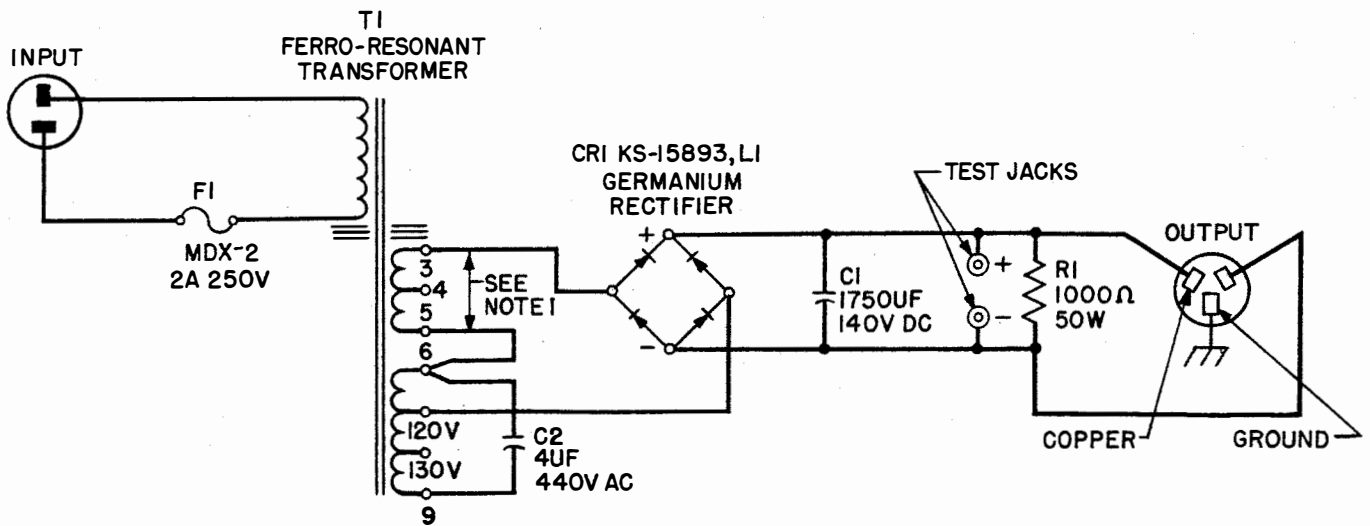


Figure 20 - KS-5928, List 7 - Circuit Schematic

Note 1: (T1) Transformer taps 3, 4, and 5 are selected at the factory.

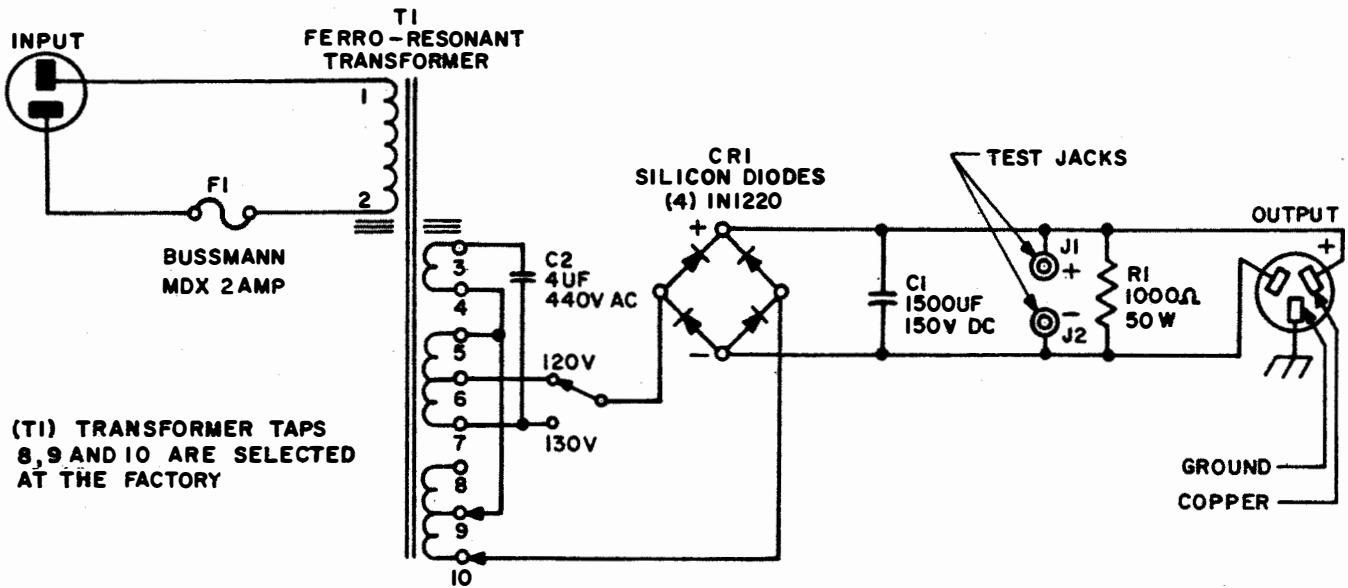


Figure 21 - KS-5928, List 8 - Circuit Schematic

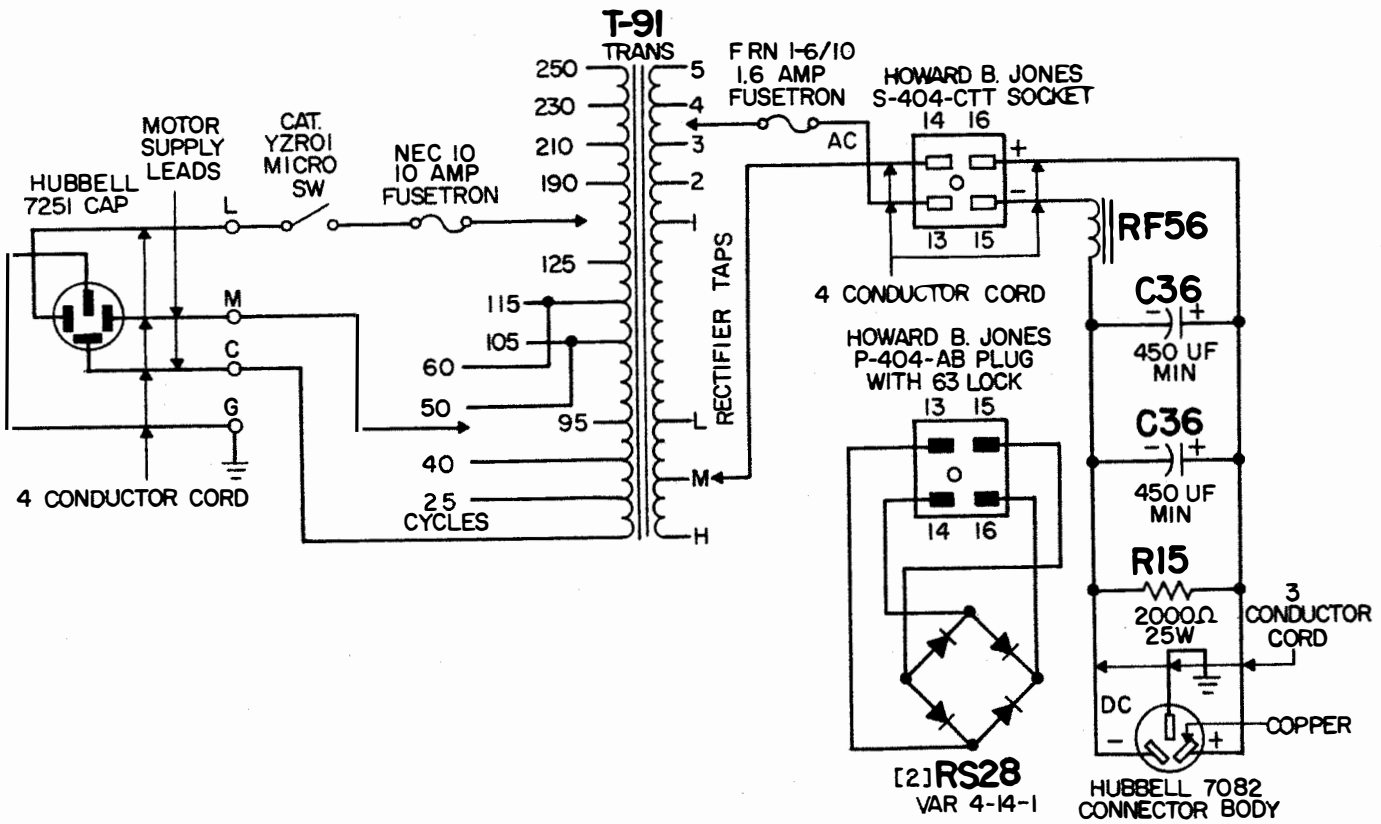


Figure 22 - KS-5988, List 1 - Circuit Schematic

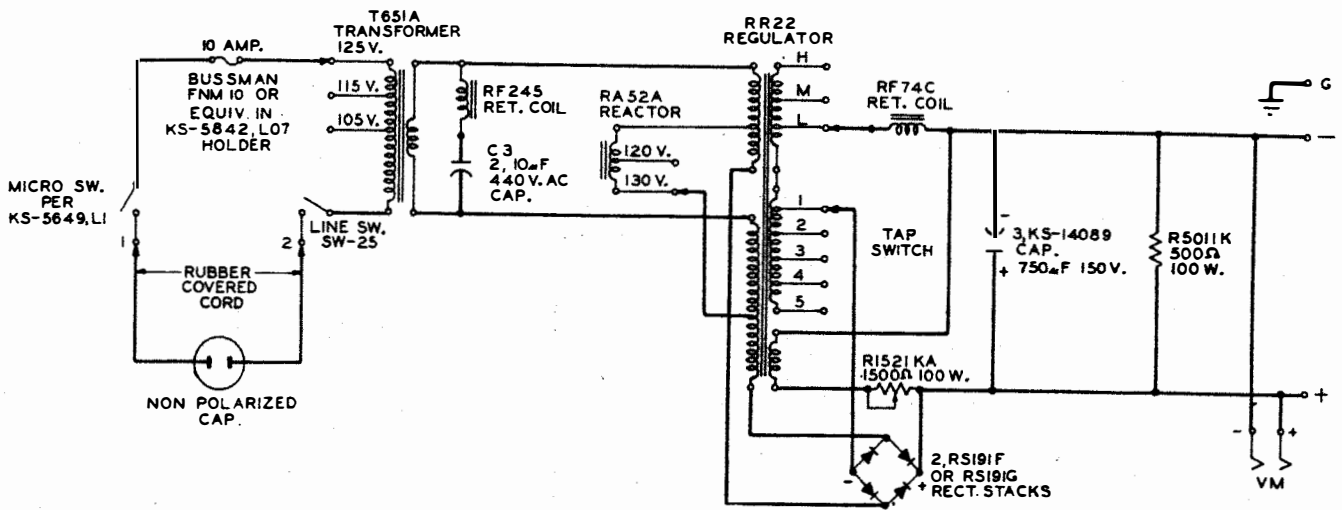


Figure 23 - KS-15523, List 1 (Mfr Disc.) - Circuit Schematic

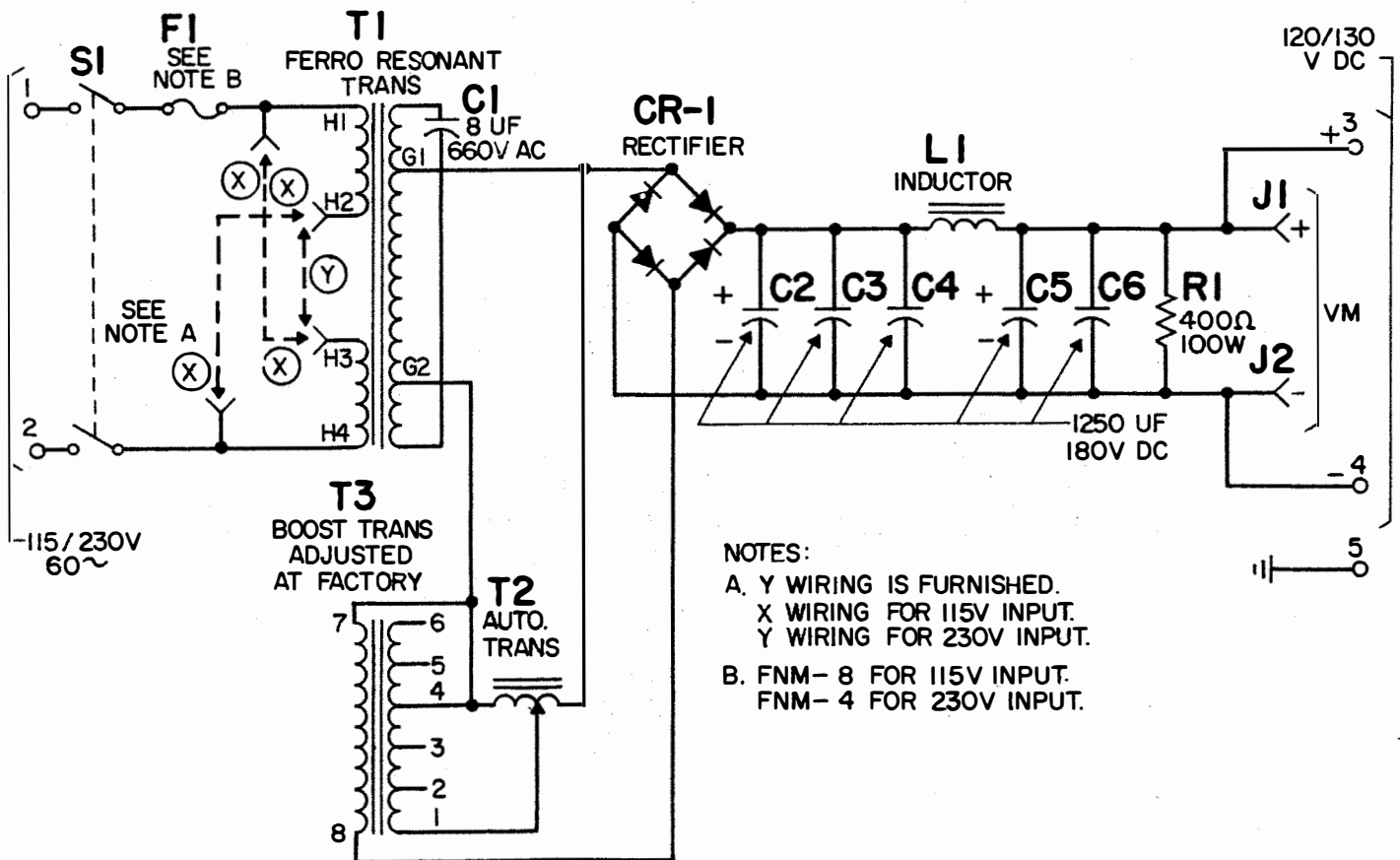


Figure 24 - KS-15523, List 4 - Circuit Schematic

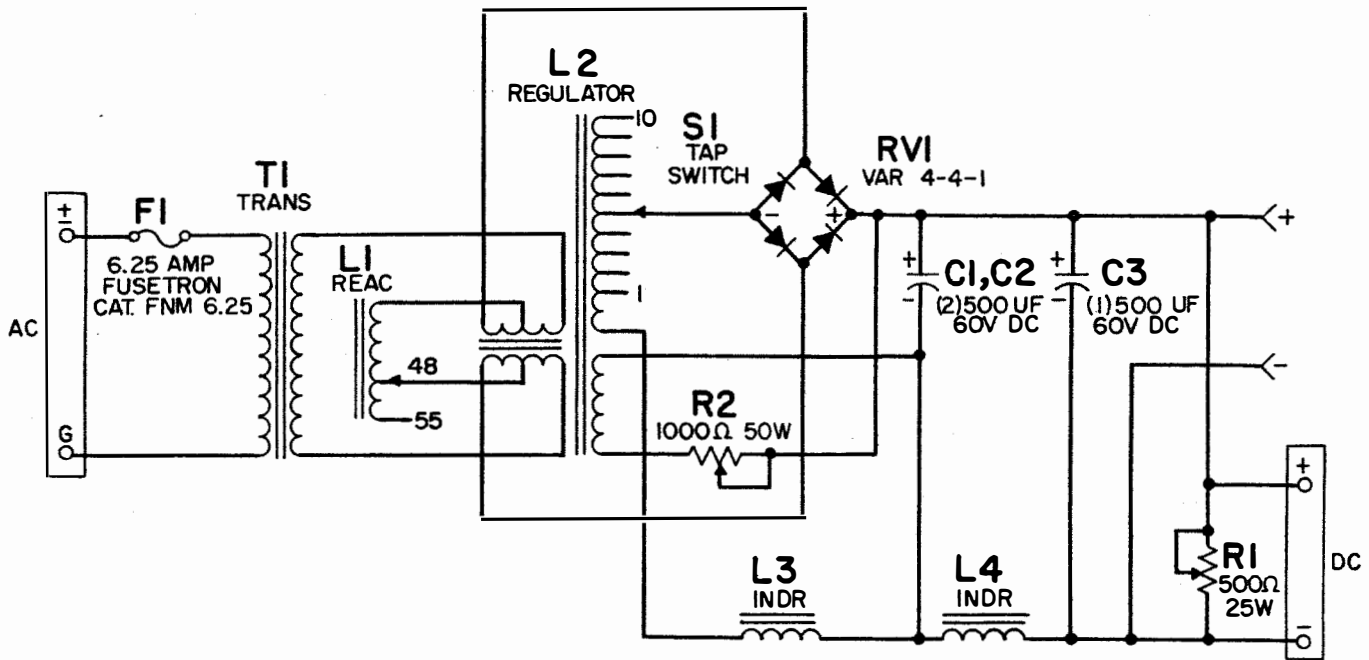


Figure 25 - KS-15620, List 1 (Mfr Disc.) - Circuit Schematic

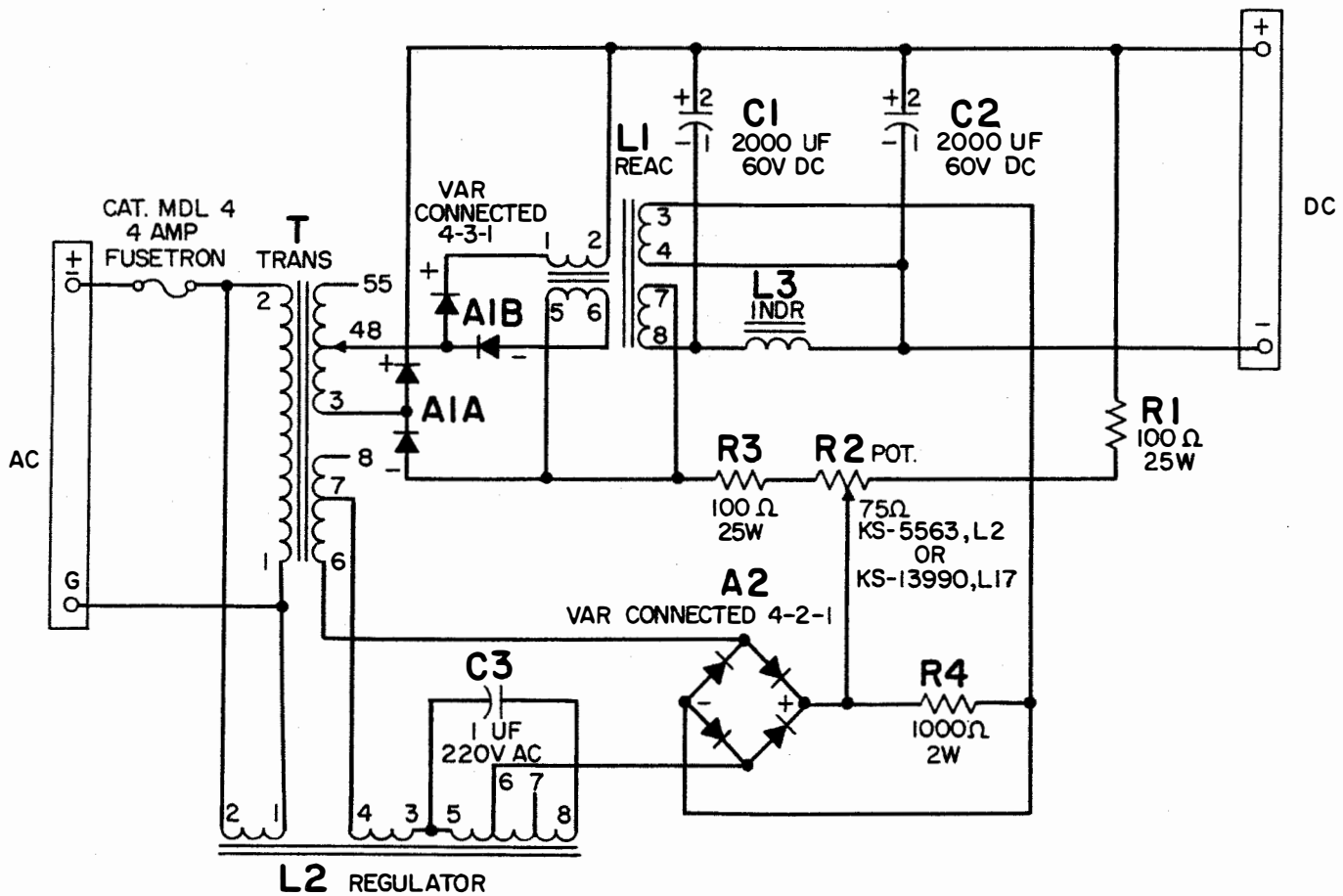


Figure 26 - KS-15620, List 2 (Mfr Disc.) - Circuit Schematic

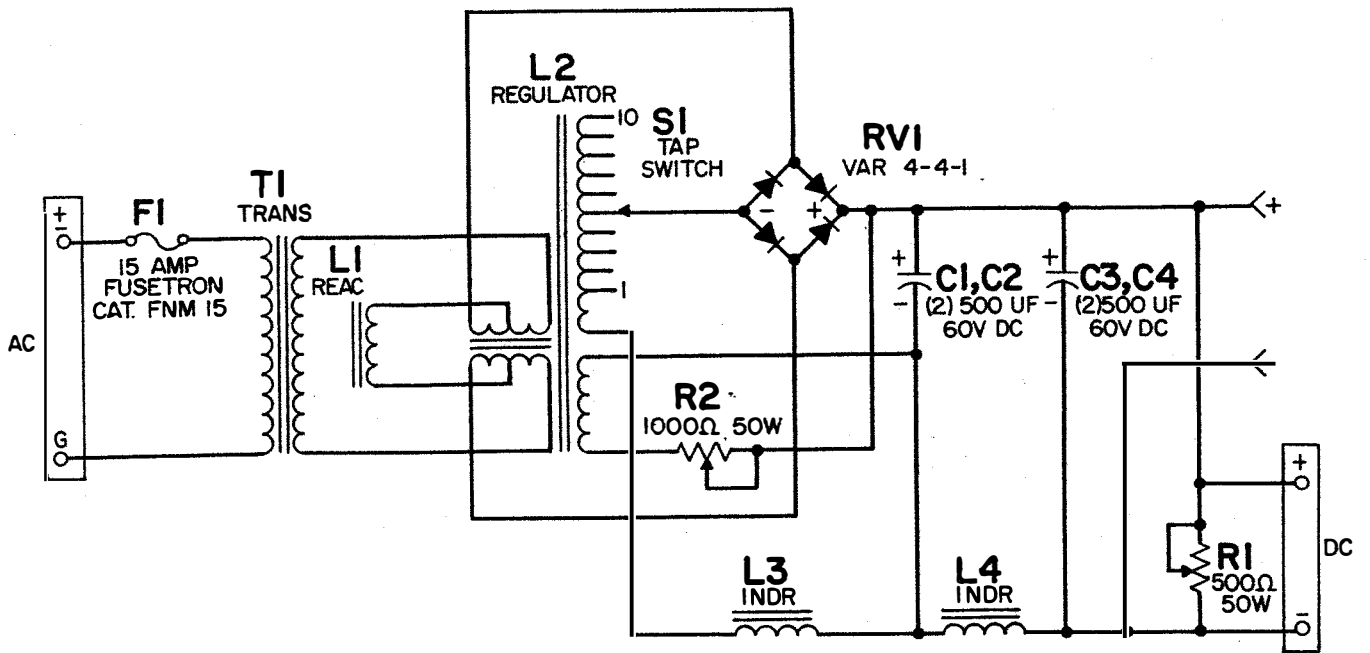


Figure 27 - KS-15620, List 3 (Mfr Disc.) - Circuit Schematic

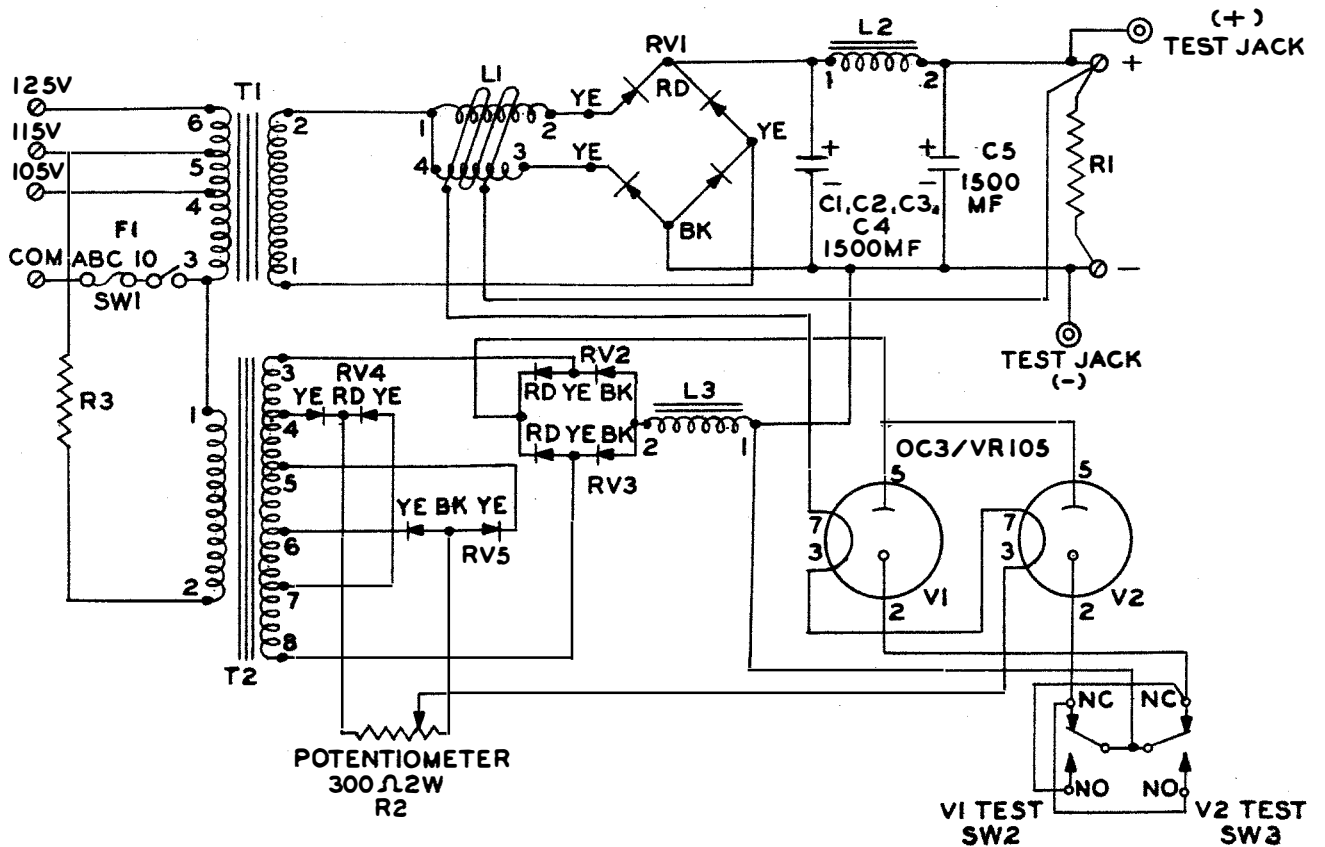


Figure 28 - KS-15620, List 4 (Mfr Disc.) - Circuit Schematic

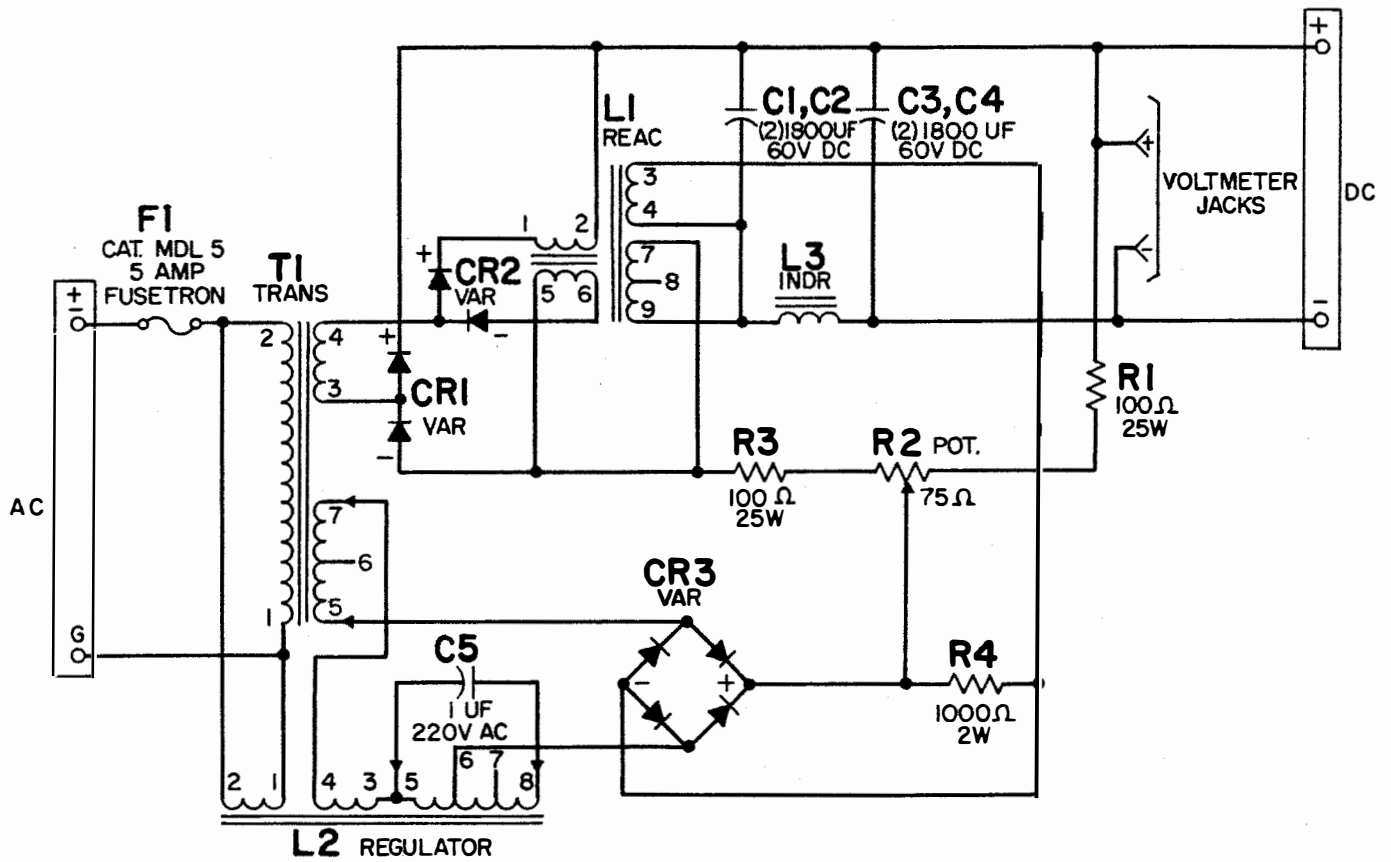


Figure 29 - KS-15620, List 6 - Circuit Schematic

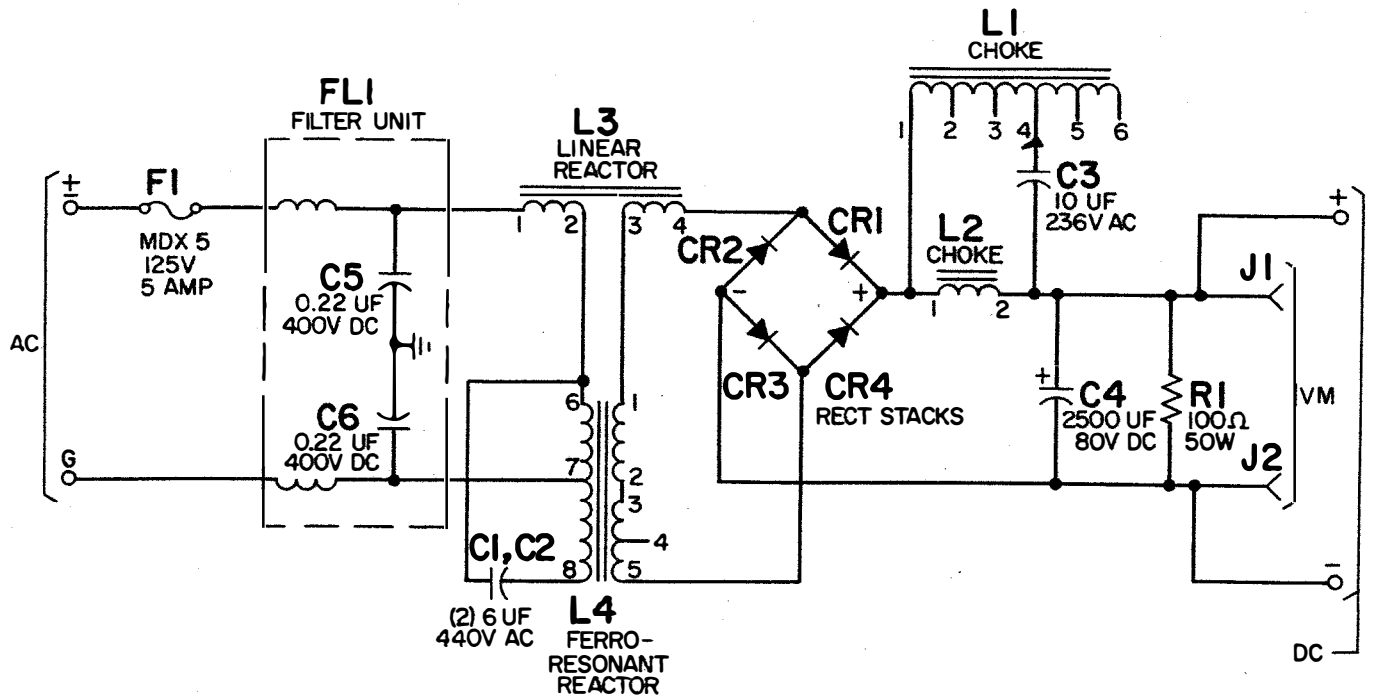


Figure 30 - KS-15620, List 7 (Mfr Disc.) - Circuit Schematic

Note: Terminals 2, 3, 4, 5, and 6 of List 1 are for manufacturer's use only.

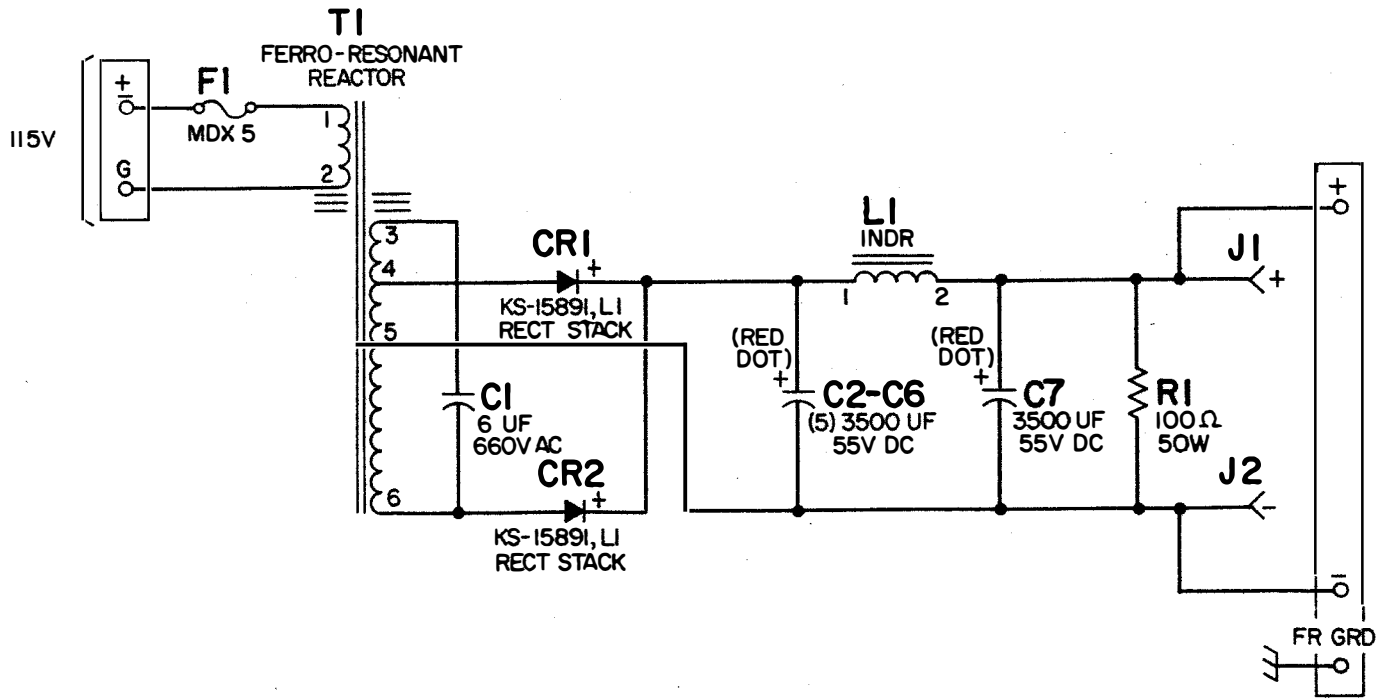


Figure 31 - KS-15620, List 8 - Circuit Schematic

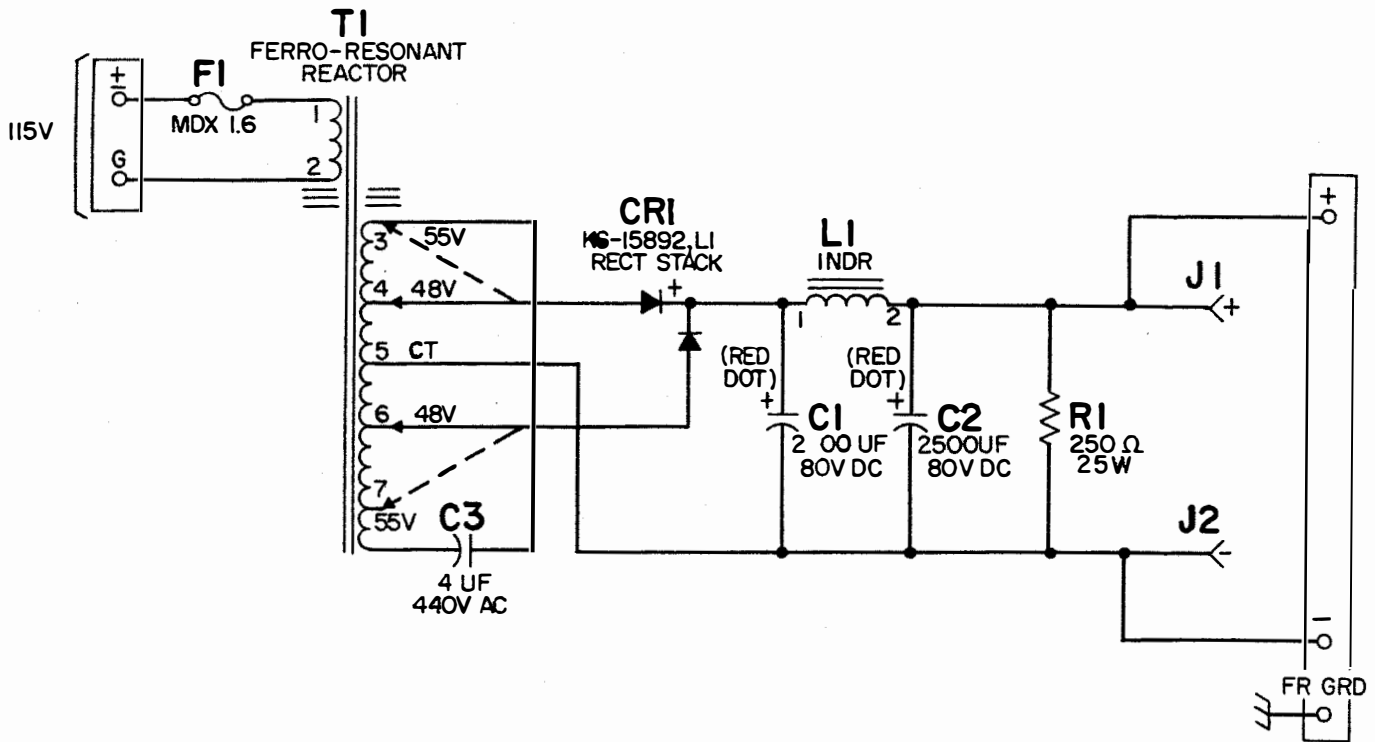


Figure 32 - KS-15620, List 9 - Circuit Schematic

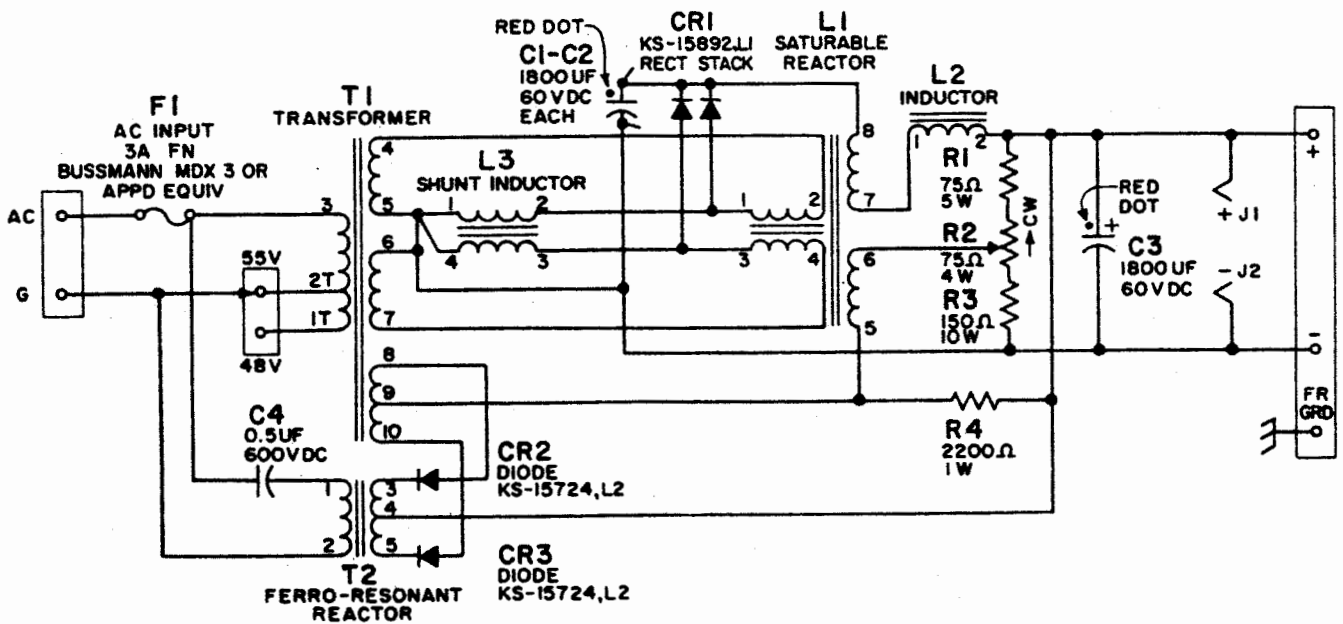


Figure 33 - KS-15620, List 10 - Circuit Schematic

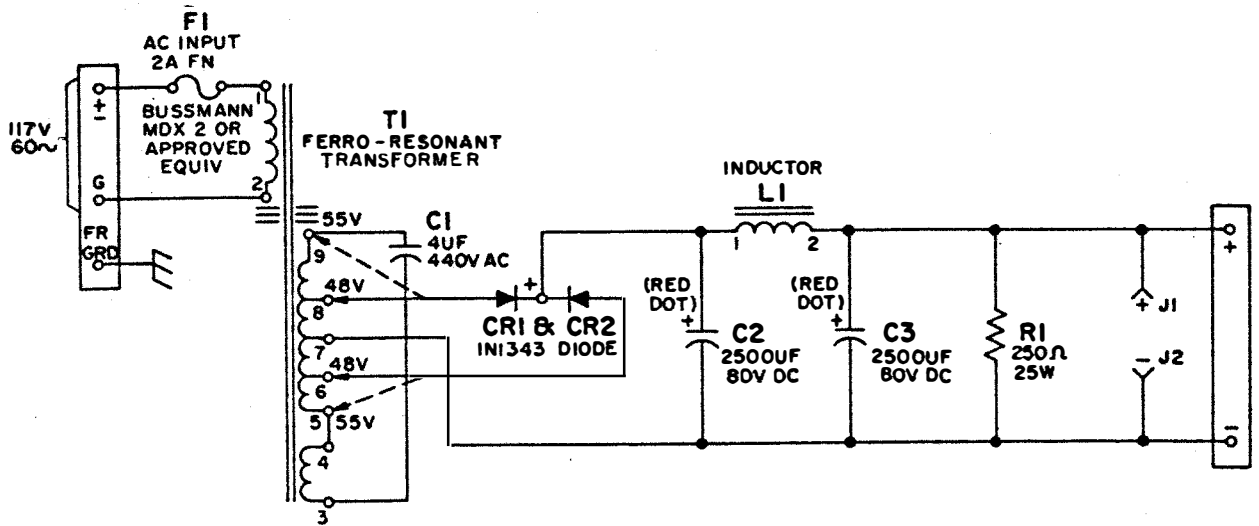


Figure 34 - KS-15620, List 12 - Circuit Schematic

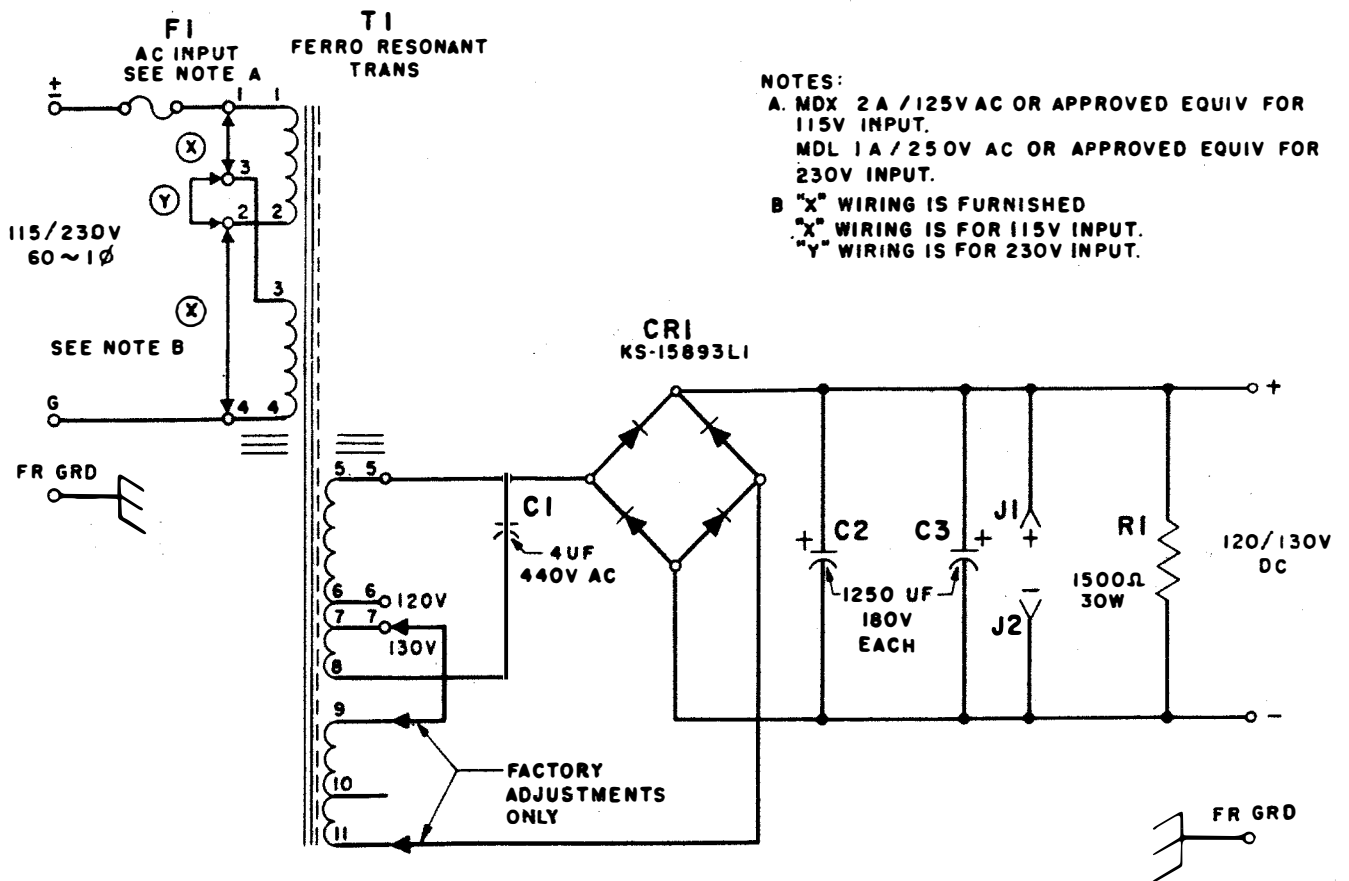


Figure 35 - KS-15898, List 1 - Circuit Schematic

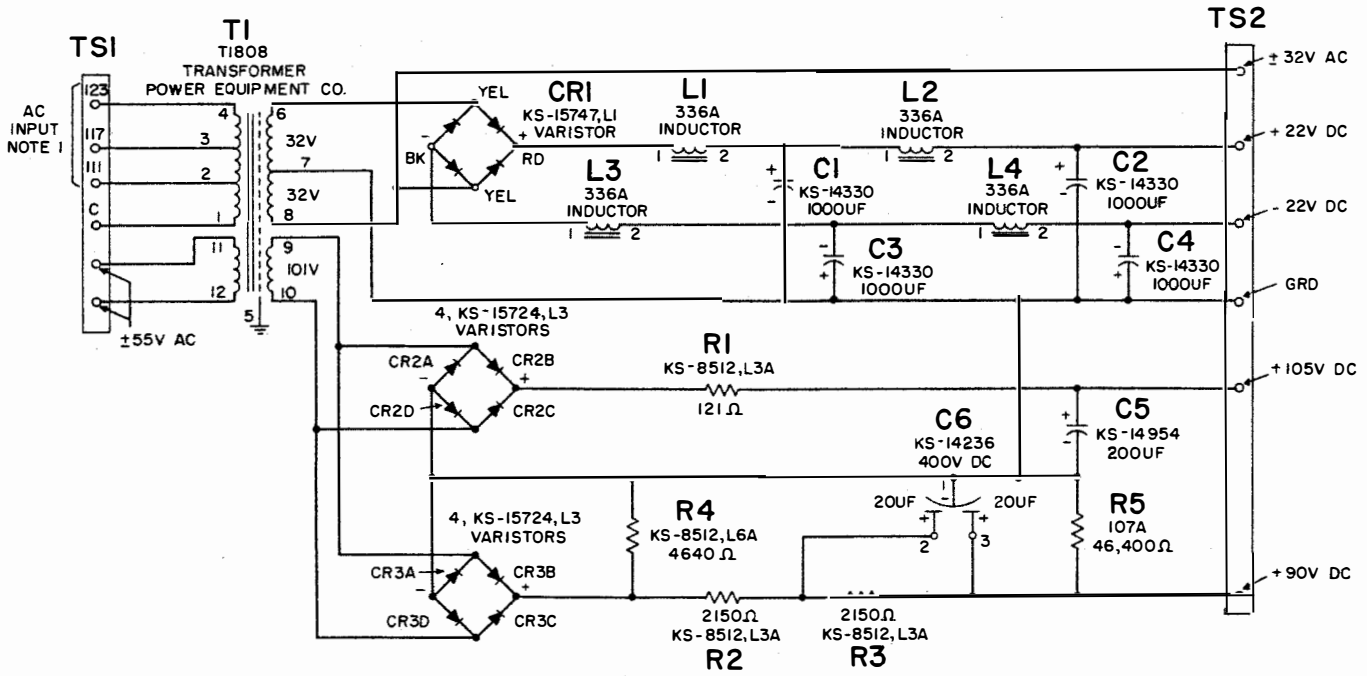


Figure 36 - J70124H, List 1 - Circuit Schematic

Note 1: The ac input is fused with a 1.0 amp Fusetron (or equivalent) in power distribution unit.

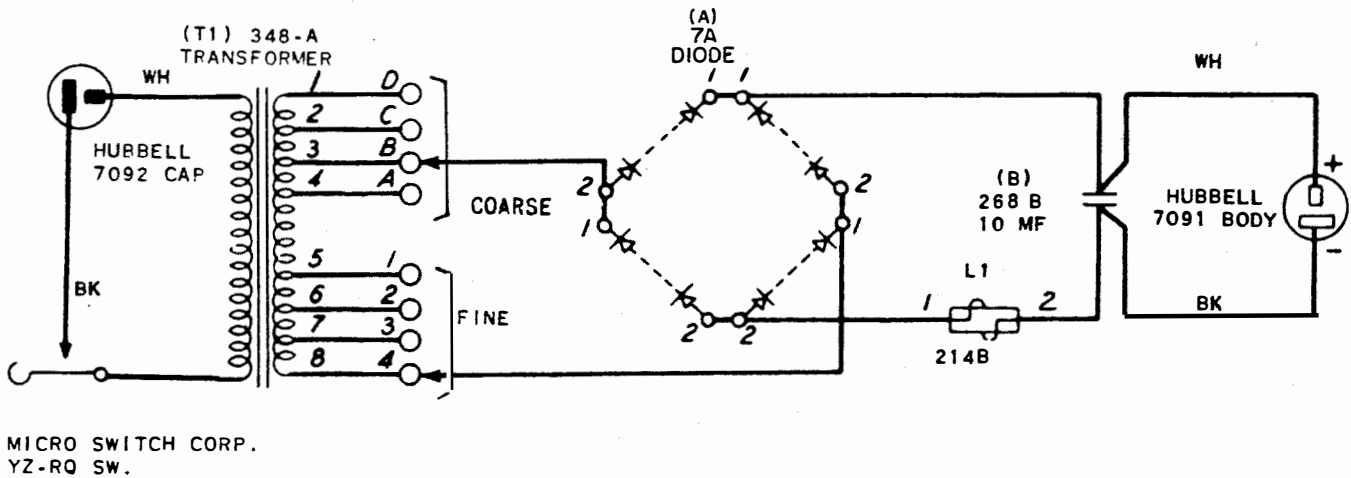


Figure 37 - J86205J, List 1 (Mfr Disc.) - Circuit Schematic

NOTE:

1. THE SAME LIST NUMBER SHOULD BE USED FOR RV1 AND RV2.

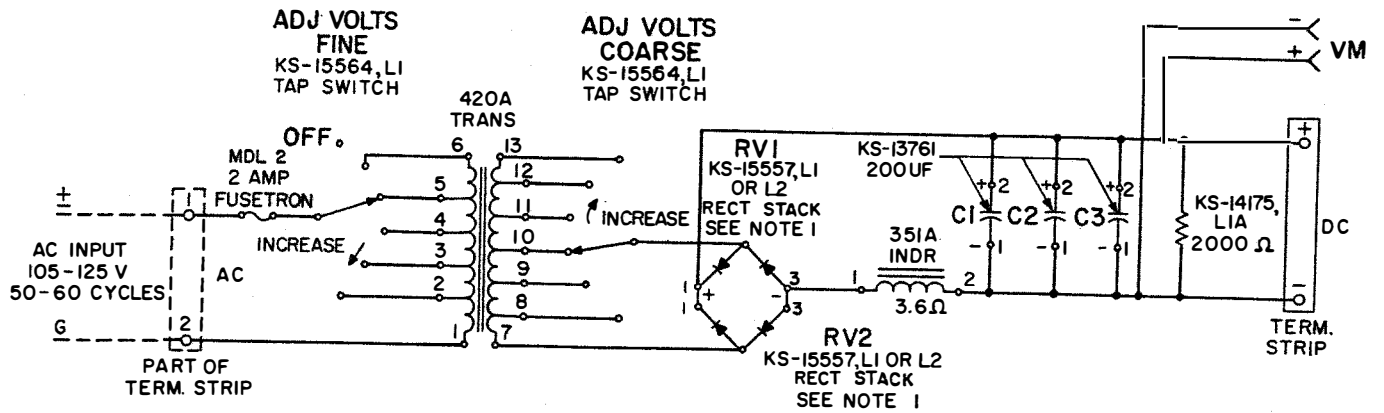


Figure 38 - J86256A, List 1 - Circuit Schematic

NOTE:

1. THE SAME SUPPLIER SHOULD BE USED FOR RV1 AND RV2.

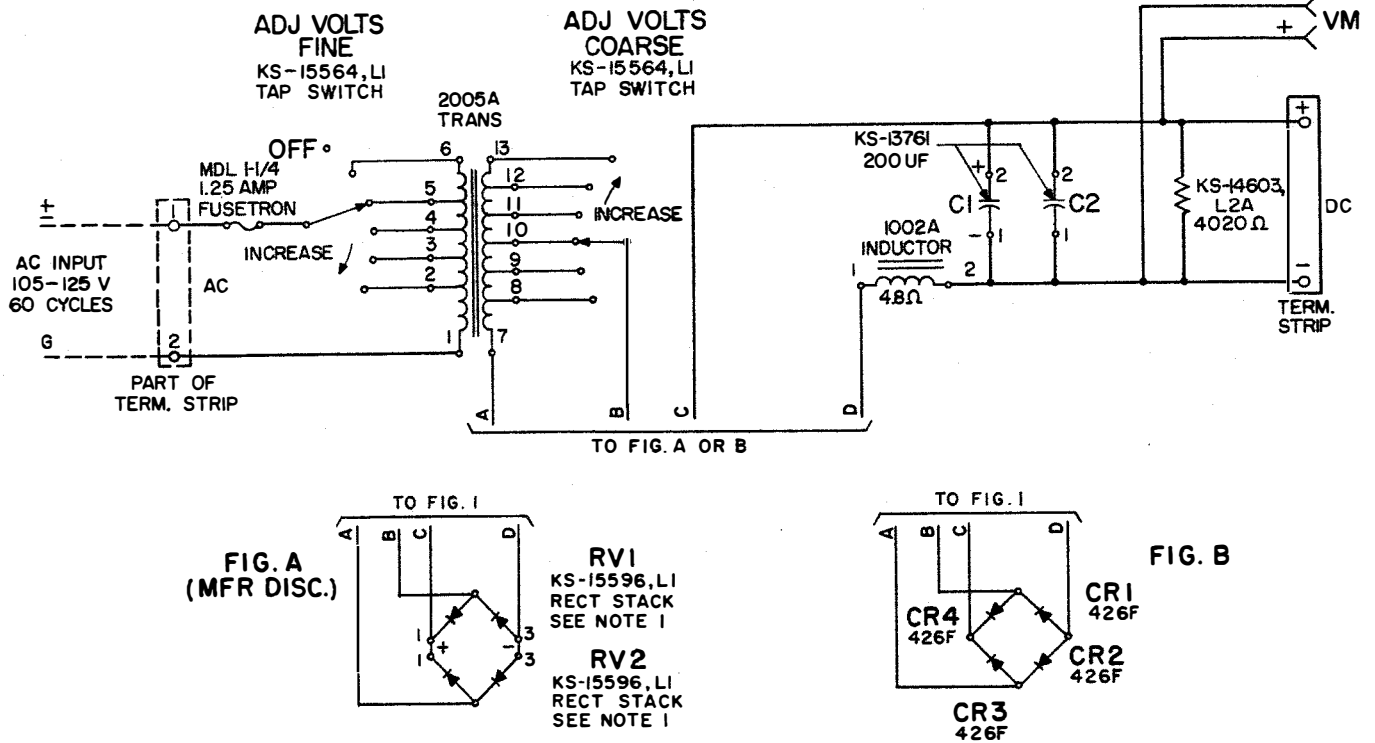


Figure 39 - J86256B, List 1 (Mfr Disc.), and List 2 - Circuit Schematic

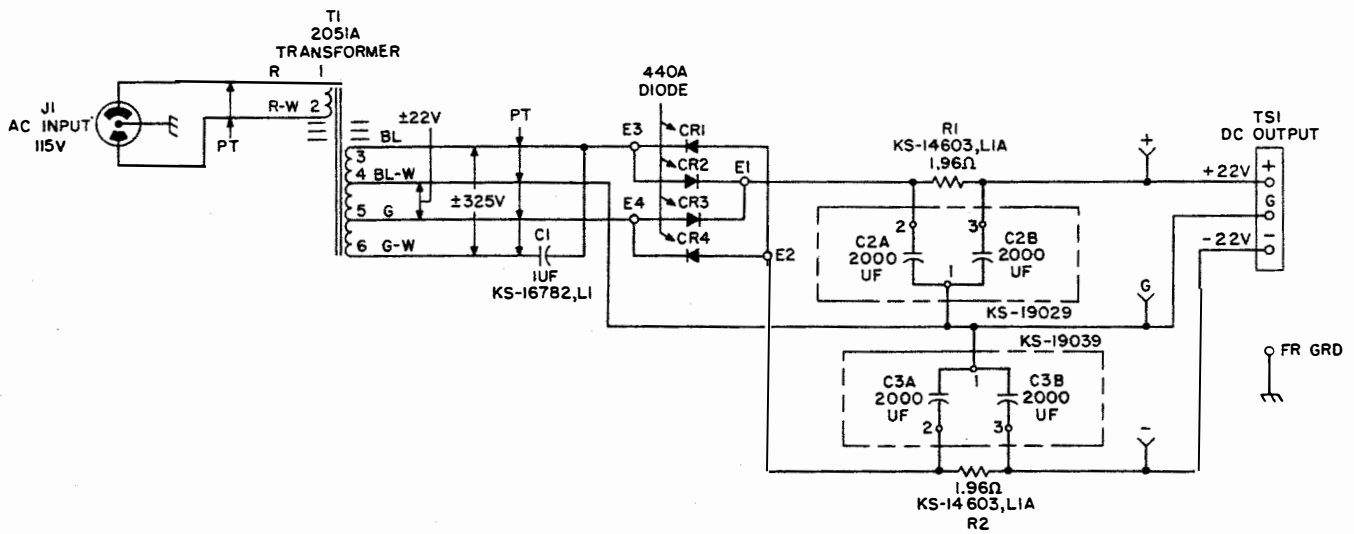


Figure 40 - J87215A, List 1 - Circuit Schematic

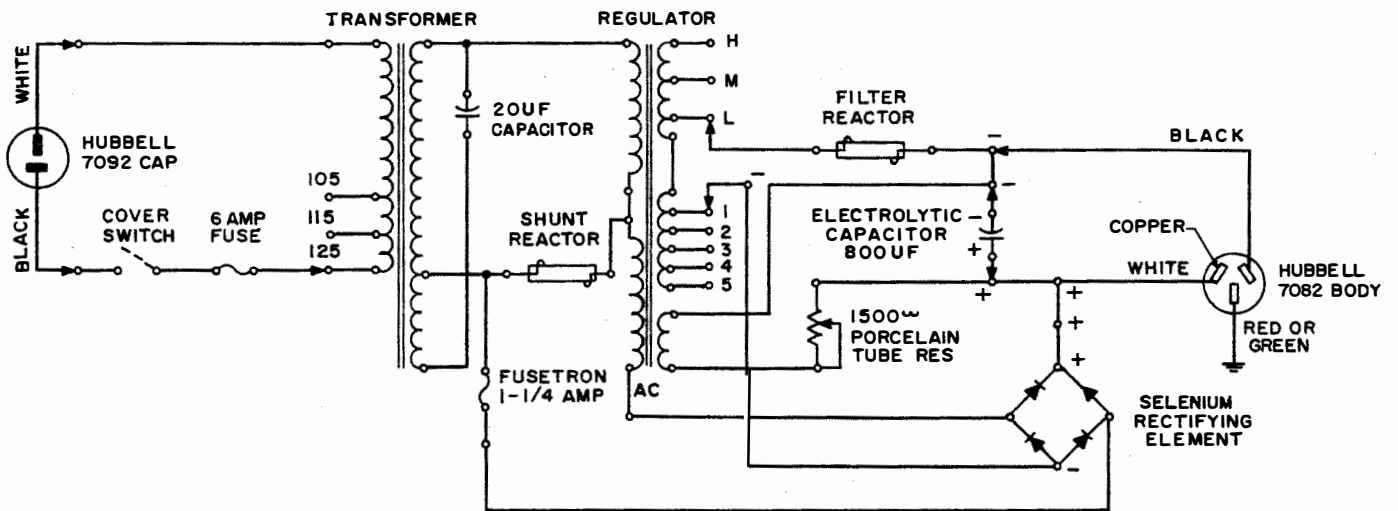


Figure 41 - REC-13, 14 (both Mfr Disc.) - Circuit Schematic

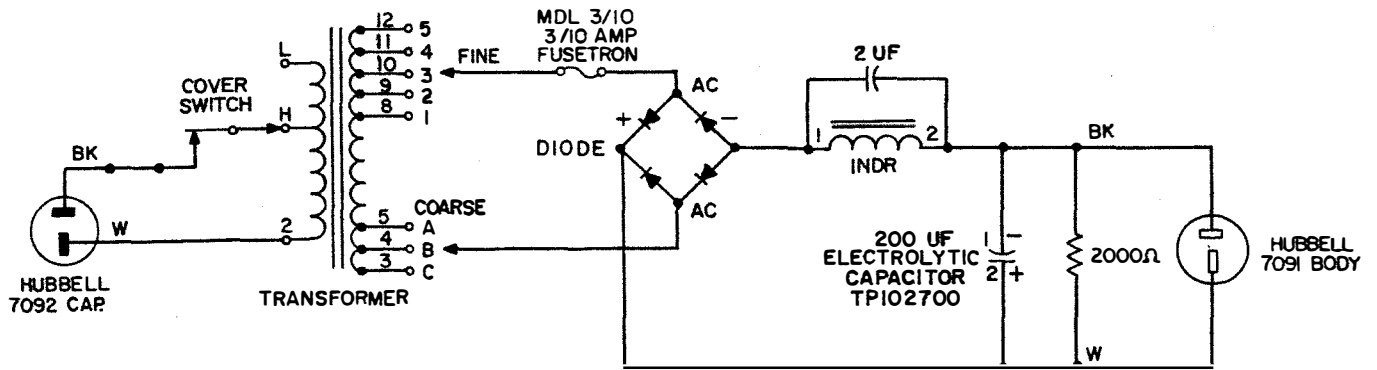


Figure 42 - REC-36 (Mfr Disc.) - Circuit Schematic

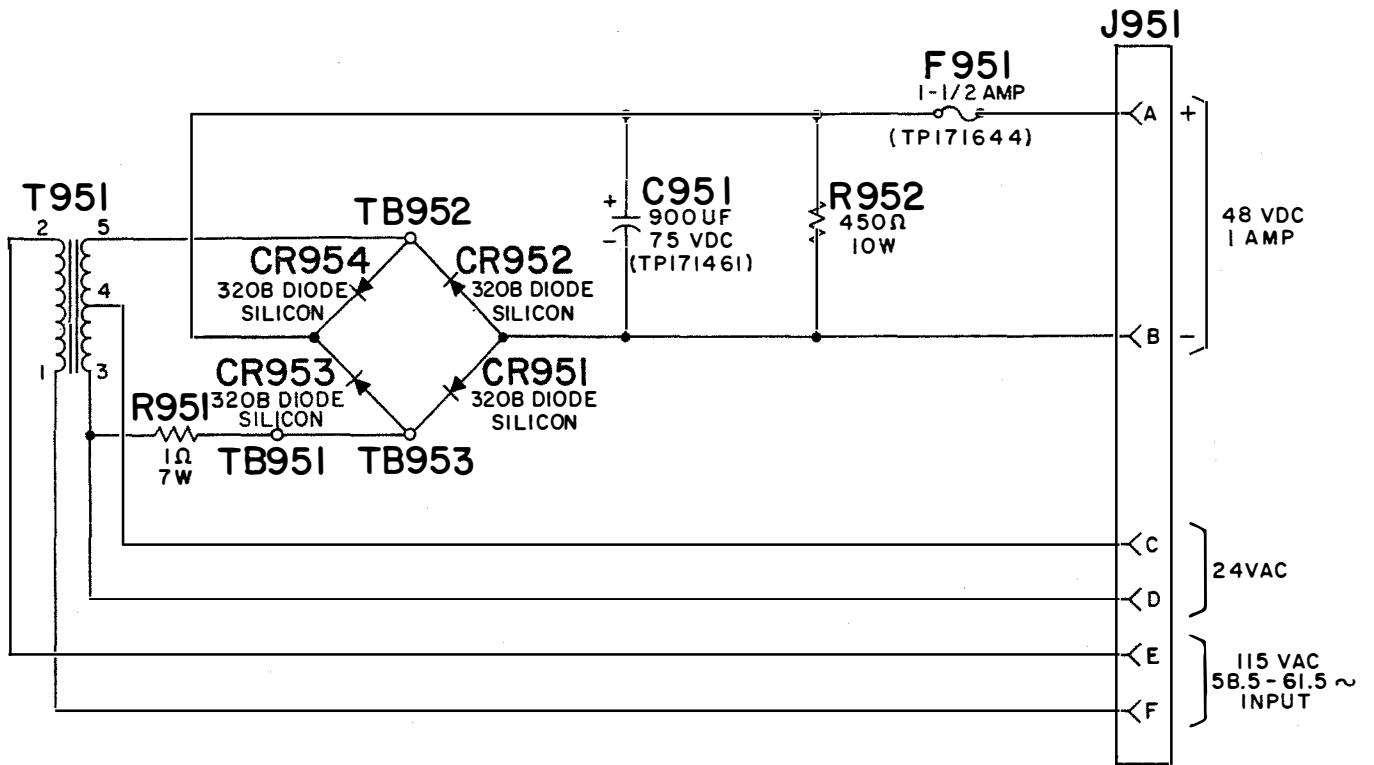


Figure 43 - TP170573 - Circuit Schematic

