

28 TYPING UNITS
WIRING DIAGRAMS

1. GENERAL

1.01 This section shows the wiring of the 28 type typing units. It is reissued to update engineering information and to change format. See chart below for units (and their codes).

1.02 Notes on the wiring diagrams explain symbols used and point out special conditions. These diagrams show the origin and termination of the various leads as well as the color coding of the leads for each of the components.

2. WIRING DIAGRAM INDEX (ATTACHMENTS)

TITLE	DIAGRAM NUMBER	SHEET NO.	WD ISSUE
Typing Units LP15/AR (Bell 28D), LP28/AES (Bell 28B-2), LP31/AX (Bell 28B-1), LP96/AR (Bell 28AJ)	3214WD	1	46
Typing Units LP19/AN (Bell 28E)	3215WD	1	8
Typing Units LP41/AEG (Bell 28J), LP47/AEG (Bell 28J-1)	3290WD	1	C
Typing Units LP49/AED (Bell 28H), LP49/AFA (Bell 28H-1), LP49/AFB (Bell 28H-2)	3318WD	1	F
Typing Units LP49/AFC (Bell 28K)	3461WD	1	C
Typing Units LP49/AFG (Bell 28L)	3627WD	1	D
Typing Units LP80/AGP (Bell 28LD), LP81/AGP (Bell LE), LP82/AGQ (Bell 28LB), LP82/AGR (Bell 28LC), LP100/AHL (Bell 28LF)	4228WD	1	4
Typing Units LP92/AHD (Bell 28S)	4254WD	1	4
Typing Unit LP93/AHE (Bell 28AA)	4340WD	1	A
Typing Units LP86/AGX (Bell 28B), LP87/AGY (Bell 28C), LP88/AGZ (Bell 28F), LP89/AHA (Bell 28G), LP90/AHB (Bell 28U), LP91/AHC (Bell 28W), LP95/AHB (Bell 28AG), LP97/AHB (Bell 28AE), LP102/AHB (Bell 28AH), LP122/AGX (Bell 28AP)	4355WD	1	5
Typing Units LP106/AHR (Bell 28AD), LP106/AHS (Bell 28AB), LP107/AHU (Bell 28AC)	4905WD	1	C
Typing Units LP115/AJR (Bell 28AN)	6487WD	1	6

SECTION 573-115-400

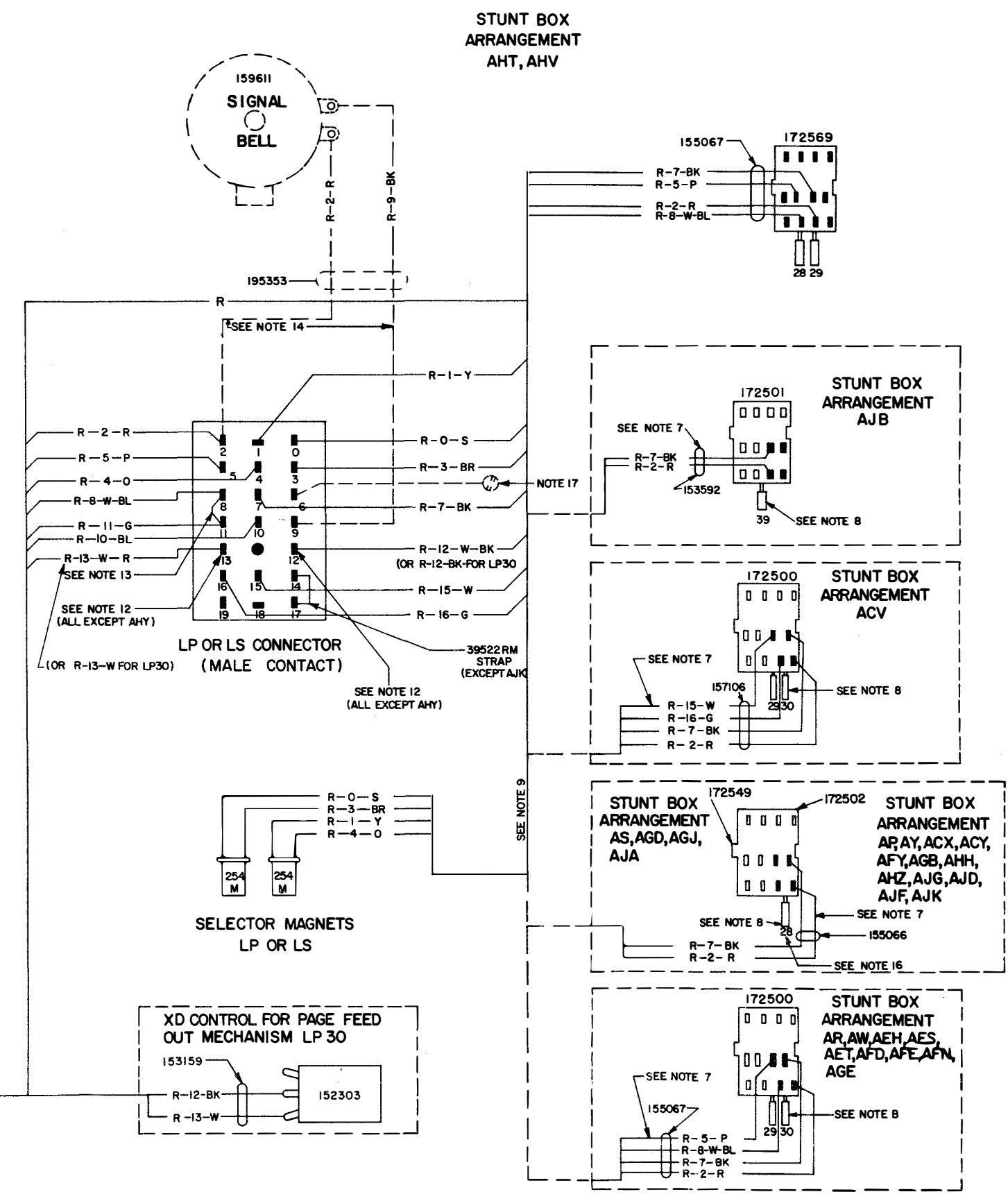
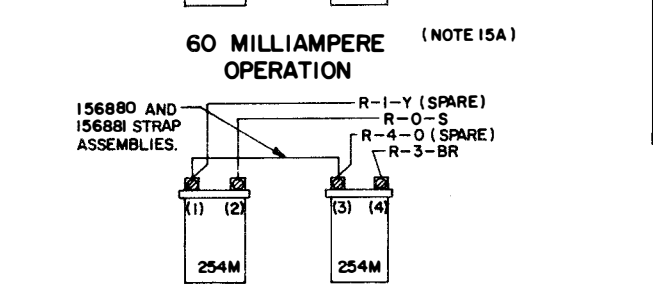
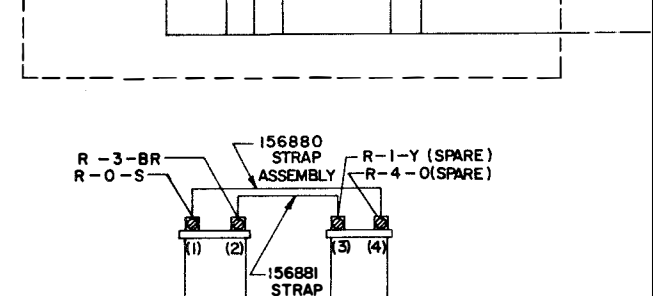
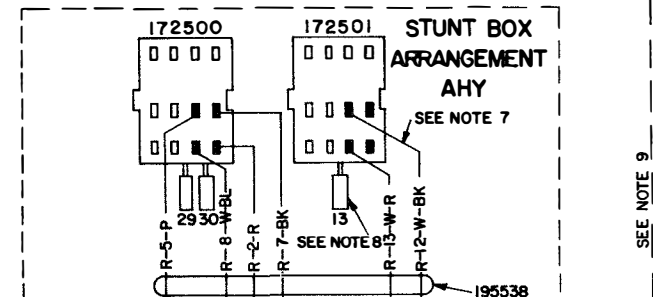
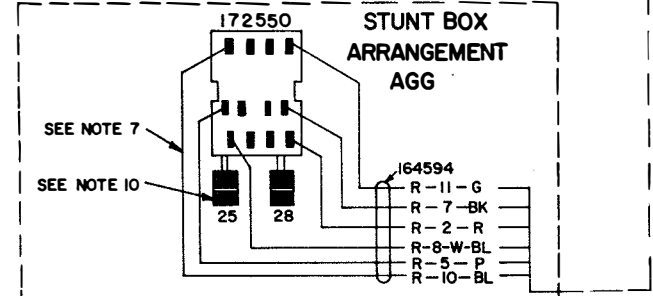
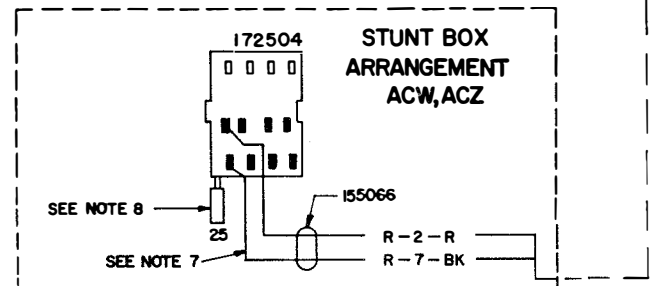
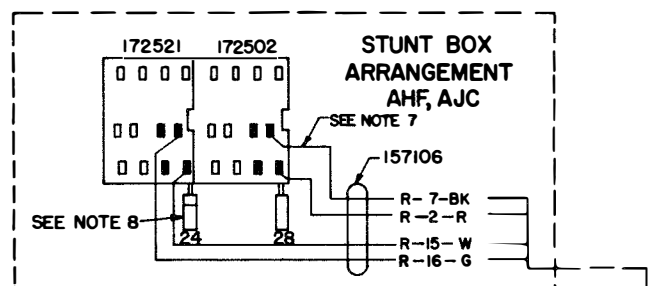
TITLE	DIAGRAM NUMBER	SHEET NO.	WD ISSUE
Typing Units LP118/AJM (Bell 28AF), LP119/AJN (Bell 28AK), LP120/AJP (Bell 28AL)	7020WD	CTRL 1 2	1 8 6
Typing Units LP126/AJY (Bell 28AT), LP127/AJZ (Bell 28AU), LP137/AJQ (Bell 28AM)	7021WD	1	9
Typing Unit LP129/AUH (Bell 28AR), LP133/AKA (Bell 28BE)	7763WD	1	3

3214 WD

REVISIONS

ISSUE	DATE	AUTH. NO.
41	12-23-63	79185-1
42	1-9-65	85722
43	2-3-65	85959
44	8-25-66	90726
45	7-11-67	94149
46	9-12-68	98086

- NOTES
1. WIRING CHANNEL DESIGNATED BY "R" DOES NOT REPRESENT CABLES, BUT ASSISTS IN TRACING CONNECTIONS.
 2. COLOR CODE:
BK-BLACK BL-BLUE
W-WHITE R-RED
Y-YELLOW BR-BROWN
P-PURPLE O-ORANGE
S-SLATE G-GREEN
 3. COLOR LEGEND:
R- CHANNEL IDENTIFICATION
B- CHANNEL WIRE NUMBER
W- WIRE COLOR CODE
 - 4.
 5. CONNECTOR VIEWED FROM SOLDERED TERMINAL ENDS.
 - 6.
 7. THESE LEADS FURNISHED WITH FUNCTION BOX.
 8. NORMALLY OPEN CONTACTS
NORMALLY CLOSED CONTACTS
 9. A COMPLETE LP UNIT USES ONLY ONE STUNT BOX. MAKE APPROXIMATE () CONNECTIONS TO COMPLETE CIRCUIT.
 10. TRANSFER CONTACTS
REAR CONTACTS NORMALLY OPEN
REAR CONTACTS NORMALLY CLOSED
 11. THE FOLLOWING STUNT BOXES ARE WITHOUT SWITCH ASSEMBLIES: AX, ADL.
 12. THESE TWO TERMINALS ARE USED WHEN LP IS EQUIPPED WITH XD CONT. PAGE FEED OUT OR XD CONT. HORIZ. TAB. IF BOTH FEATURES ARE USED, THEY ARE WIRED IN SERIES TO THESE TERMINALS.
 13. USE 39522 RM STRAP FOR LP 95,96,97,102,122
 14. THE 159611 SIGNAL BELL AND THE 195353 CABLE ASSEMBLY ARE CONTAINED ON THE LP III ONLY.
 15. A. THE LP III IS FACTORY WIRED FOR 60MA OPER.
B. THE LP III MAY BE CONVERTED FOR 20-30MA. OPERATION BY THE CUSTOMER.
 16. FOR AFY STUNT BOX, CONTACT IS OVER SLOT 30.
 17. 195269 STRAP CONNECTED FROM TERMINAL 6 TO CONNECTOR BRACKET MOUNTING SCREW FOR 179613 AND 179644 R.F. SUPPRESSION MODIFICATION KITS.



ACTUAL
WIRING DIAGRAM FOR
MODEL 28, TYPING UNITS
LP 14,15,16,17,20,21,23,26,27,28,30,31,34,
38,39,43,44,55,56,60,65,67,68,70,73,84,
96,101,108,111,113,122,127,105,109,115,145
139

STUNT BOX
AP, AR, AS, AW, AX, AY, ACV, ACW, ACX, ACY,
ACZ, ADL, AEH, AES, AET, AFD, AFE, AFN, AGS,
AGD, AGE, AFY, AGJ, AGG, AHF, AHH, AHT, AHV,
AHY, AHZ, AJG, AJA, AJC, AJD, AJF, AJG, AJB,
AJK

SEQUENTIAL
SELECTOR UNIT
LS 2,4

APPROVALS

D AND R	E OF M
<i>H.J.K.</i>	<i>[Signature]</i>

E-NUMBER
PROD. NO. 3214 WD
DATE 12-1-56
P.D. FILE NO. 45-3065AA
DRAWN JER. CHKD. GG.
ENGD. VC. APPD. QAL

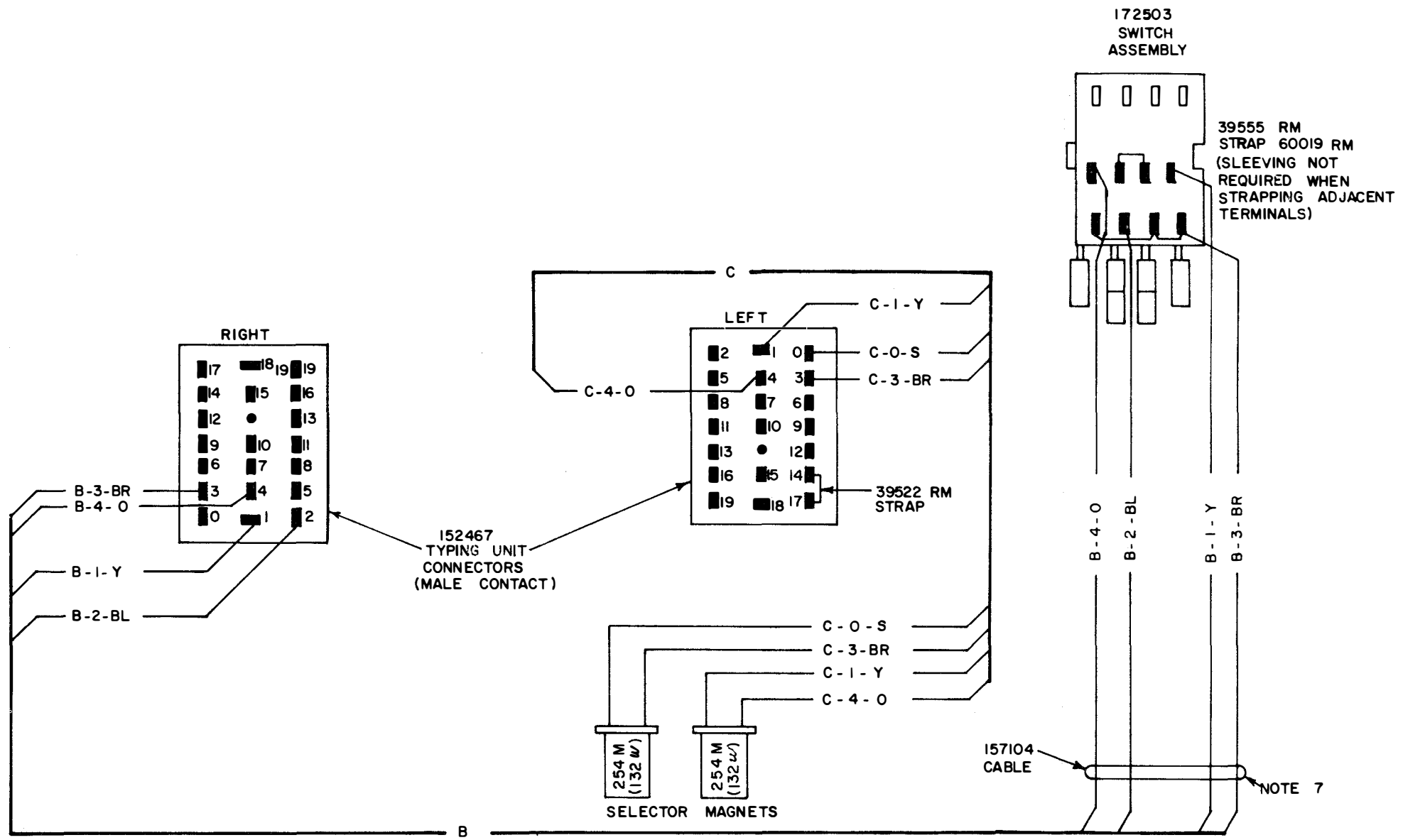
TELETYPE CORPORATION
3214 WD

3215 WD

ISSUE	DATE	AUTH. NO.
2	5-7-57	28-6488-1
3	5-22-59	28-11102
4	10-22-59	28-11993
5	10-14-60	28-13541
6	9-19-61	70985
7	9-21-62	74605
8	11-13-63	78059

- NO. NOTES**
1. WIRING CHANNELS DESIGNATED BY "B" AND "C" DO NOT REPRESENT CABLES, BUT ASSIST IN TRACING CONNECTIONS.
 2. CHANNEL LEGEND
 3. POWER CIRCUITS WIRED FOR 115V-60 A.C. OR 115V DC. OPERATION SEE NOTE 6
 4. COLOR CODE

BK - BLACK	R - RED
W - WHITE	BR - BROWN
Y - YELLOW	O - ORANGE
S - SLATE	BL - BLUE
 5. CONNECTORS VIEWED FROM SOLDERED TERMINAL ENDS.
 6. ASSOCIATED LESU MUST BE EQUIPPED WITH AC-DC CONVERSION ASSEMBLY FOR DC OPERATION OF SIGNAL BELL CONTACTS.
 152021 FOR LESU5
 152624 FOR LESU7
 7. THIS CABLE IS FURNISHED WITH STUNT BOX.
 - 8.



ACTUAL WIRING DIAGRAM
 MODEL 28
 TYPING UNIT
 LP, 19, 32, 62, 71, 99
 STUNT BOX
 AN, AEA, AFO, AGF

APPROVALS

D AND R	E OF M
<i>HJK</i>	<i>cm</i>

E-NUMBER
 PROD. NO. 3215 WD

DATE: 12-1-56
 P.D. FILE NO 45-30.65 AA
 DRAWN R.B. CHKD R.D.
 ENGD V.C APPD O.A.L.


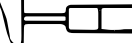
TELETYPE CORPORATION

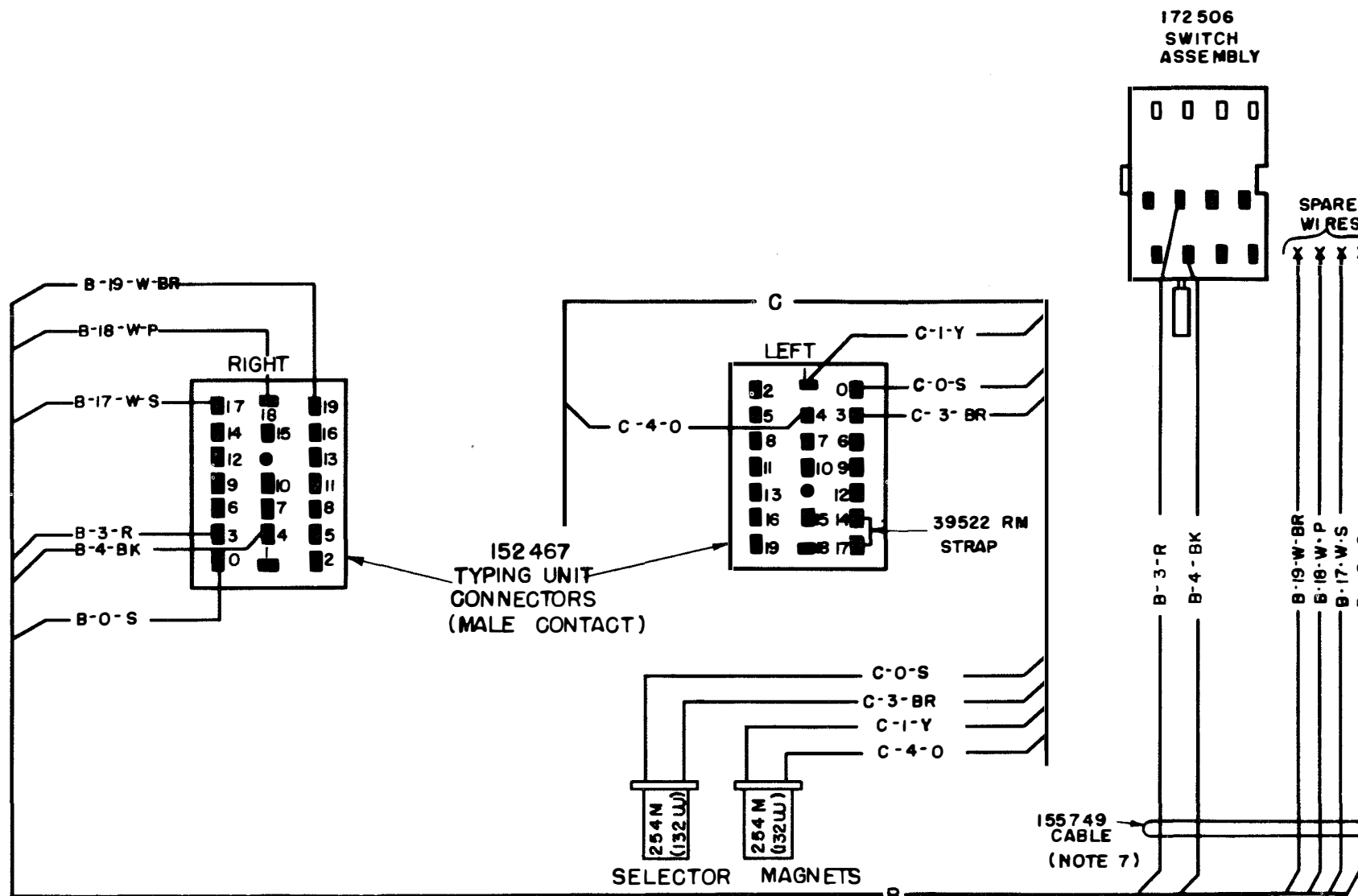
3290 WD

ISSUE	DATE	AUTH. NO.
B	7-1-58	28-6943-2
C	10-14-60	28-13541

- NO. NOTES**
1. WIRING CHANNELS DESIGNATED BY "B" AND "C" DO NOT REPRESENT CABLES, BUT ASSIST IN TRACING CONNECTIONS.
 2. CHANNEL LEGEND

—	CHANNEL IDENTIFICATION
—	CHANNEL WIRE NUMBER
C-8-W-BL	—
—	WIRE COLOR CODE
 3. POWER CIRCUITS WIRED FOR 115V-60 A.C. OR 115V D.C. OPERATION SEE NOTE 6
 4. COLOR CODE:

BK - BLACK	R - RED
W - WHITE	BR - BROWN
Y - YELLOW	O - ORANGE
S - SLATE	BL - BLUE
 5. CONNECTORS VIEWED FROM SOLDERED TERMINAL ENDS.
 6. ASSOCIATED LESU MUST BE EQUIPPED WITH AC-DC CONVERSION ASSEMBLY FOR DC OPERATION OF SIGNAL BELL CONTACTS
 152021 FOR LESU 5
 152624 FOR LESU 7
 7. THIS CABLE IS FURNISHED WITH STUNT BOX.
 8.  NORMALLY OPEN CONTACT
 NORMALLY CLOSED CONTACT



ACTUAL WIRING DIAGRAM
 MODEL 28
 TYPING UNIT
 LP, 41, 47
 STUNT BOX
 AEG

APPROVALS

D AND R	E OF M
<i>[Signature]</i>	<i>[Signature]</i>

E-NUMBER
 PROD. NO. 3290 WD

DATE: 12-1-56
 P.D. FILE NO. 45-30.65AA
 DRAWN E. R. CHKD *[Signature]*
 ENGD V.C. APPD. *[Signature]*

TELETYPE CORPORATION

3290WD

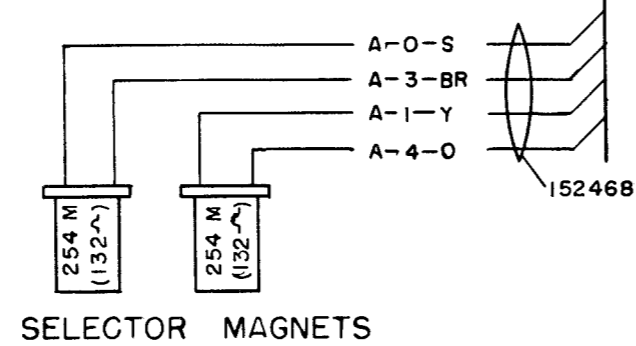
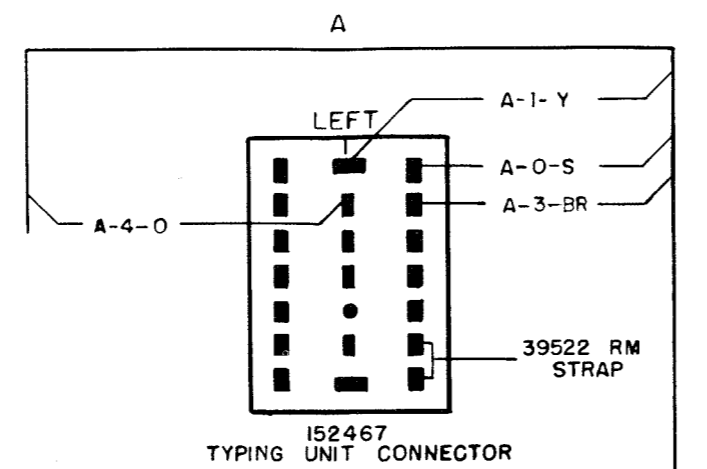
REVISIONS

ISSUE	DATE	AUTH. NO.
D	11-21-57	28-8114
E	10-14-60	28-13541
F	2-16-62	72440

- NO. NOTES
- - COLOR CODE:

BK - BLACK	W-R - WHITE RED
W - WHITE	W-BK - WHITE BLACK
Y - YELLOW	W-Y - WHITE YELLOW
P - PURPLE	W-P - WHITE PURPLE
S - SLATE	W-S - WHITE SLATE
BL - BLUE	W-BL - WHITE BLUE
R - RED	W-BR - WHITE BROWN
BR - BROWN	W-O - WHITE ORANGE
O - ORANGE	W-G - WHITE GREEN
 - X DENOTES DEAD-ENDED LEAD.
 - CONNECTOR VIEWED FROM SOLDERED TERMINAL ENDS.
 -
 - ASSOCIATED LESU MUST BE EQUIPPED WITH AC-DC CONVERSION ASSEMBLY FOR DC OPERATION OF SIGNAL BELL CONTACTS.

152021 FOR LESU 5
152624 FOR LESU 7
 - ⊗ THESE ENDS SHOULD BE LACED TO THE CABLE.
 - SOLDER LEADS TO 157889 SPRING.
 - THESE LEADS NOT REQUIRED ON AFA & AFB STUNT BOX ARRANGEMENTS, AND ARE TO BE TAPED AND TIED TO CABLE. OMIT STRAP BETWEEN CONTACTS 32 & 34.
 - SOLDER LEADS C9 TO UPPER TERMINAL AND C10 TO LOWER TERMINAL OF THIS CONTACT ASSEMBLY. ALL OTHER LEADS NOT USED ARE TAPED AND TIED TO CABLE.



NOTE: WIRES IN 157269 CABLE TERMINATING AT TERMINALS 3-17, 28, & 32 ARE TIED TOGETHER WITH LACING TAPE.

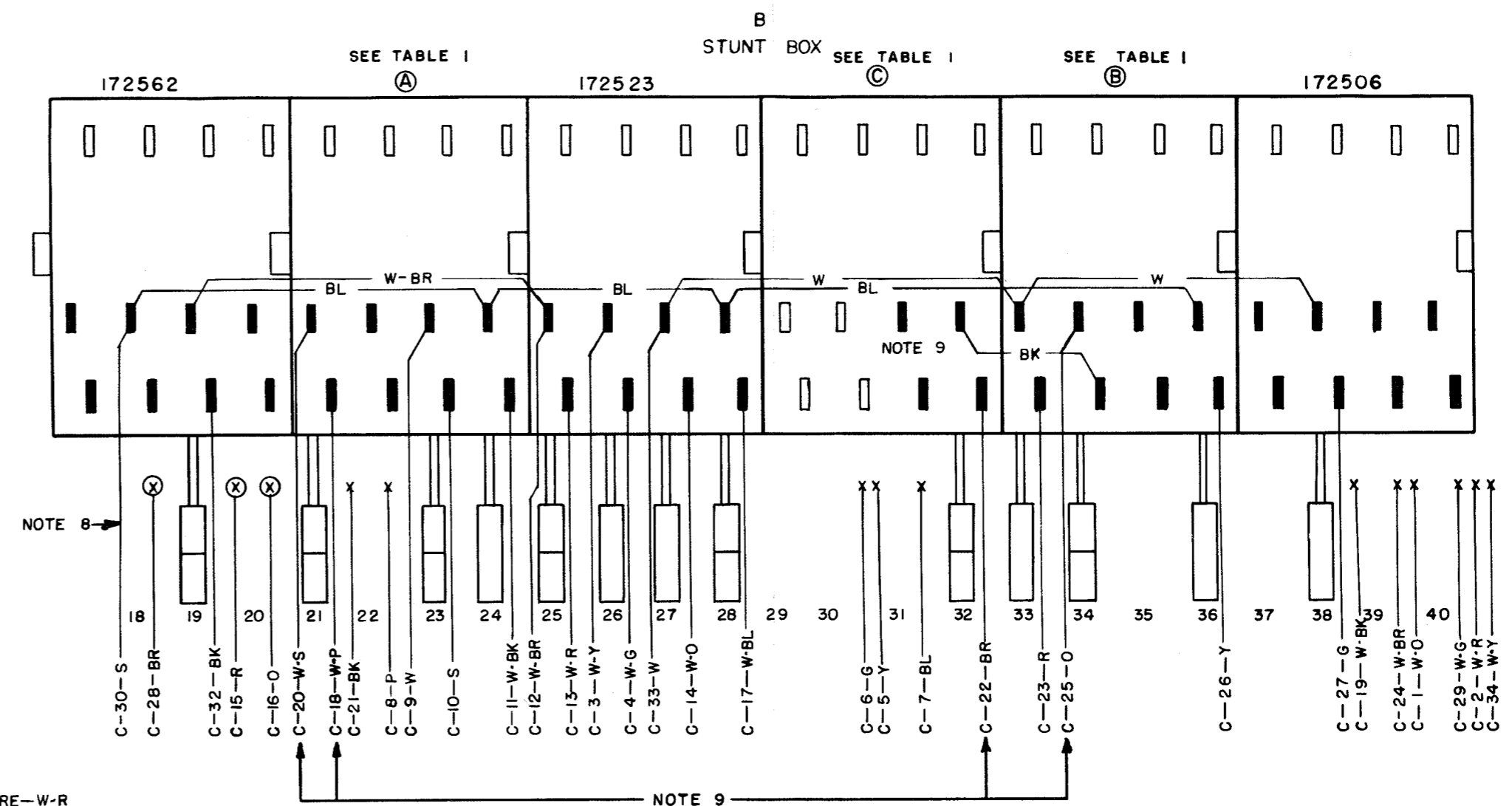
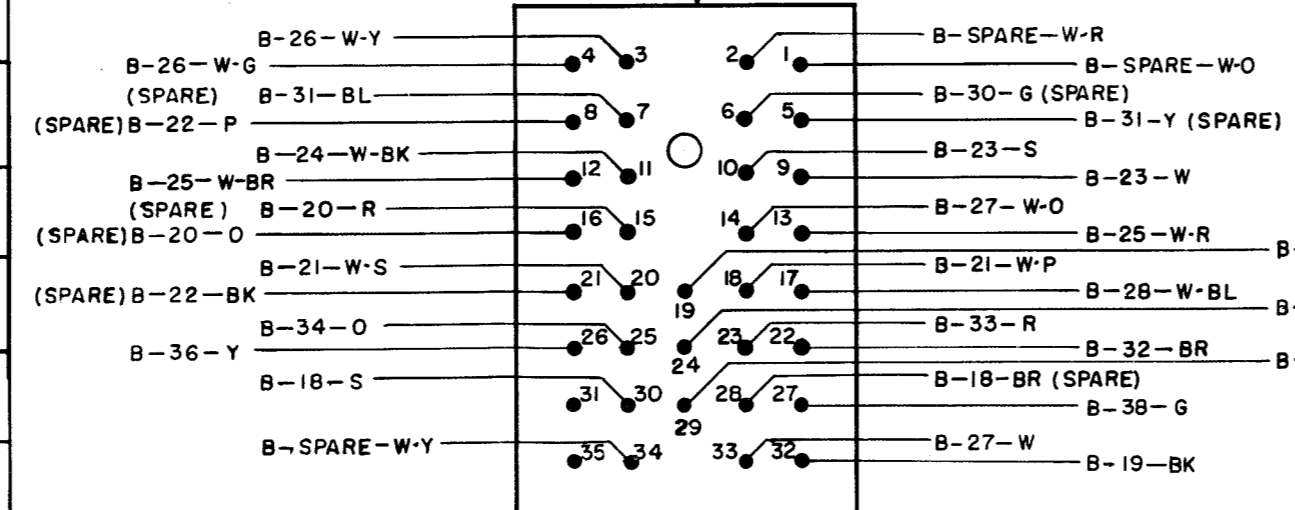


TABLE I

STUNT BOX CODE	CONTACT ASSEMBLY (A)	CONTACT ASSEMBLY (B)	CONTACT ASSEMBLY (C)
AED	172510	172522	172521
AFA	172535	172524	
AFB	172501 (NOTE 10)	172524	

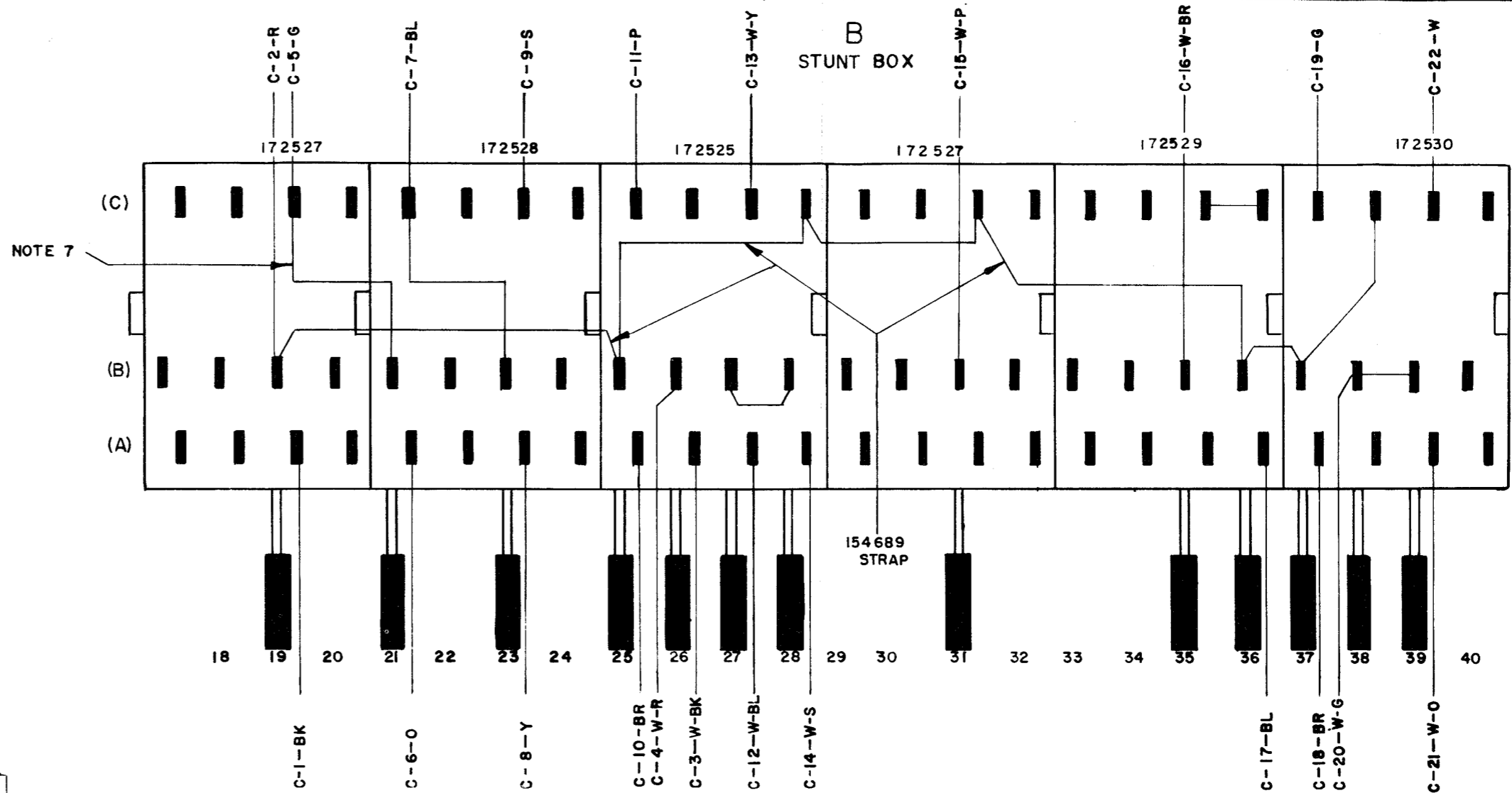
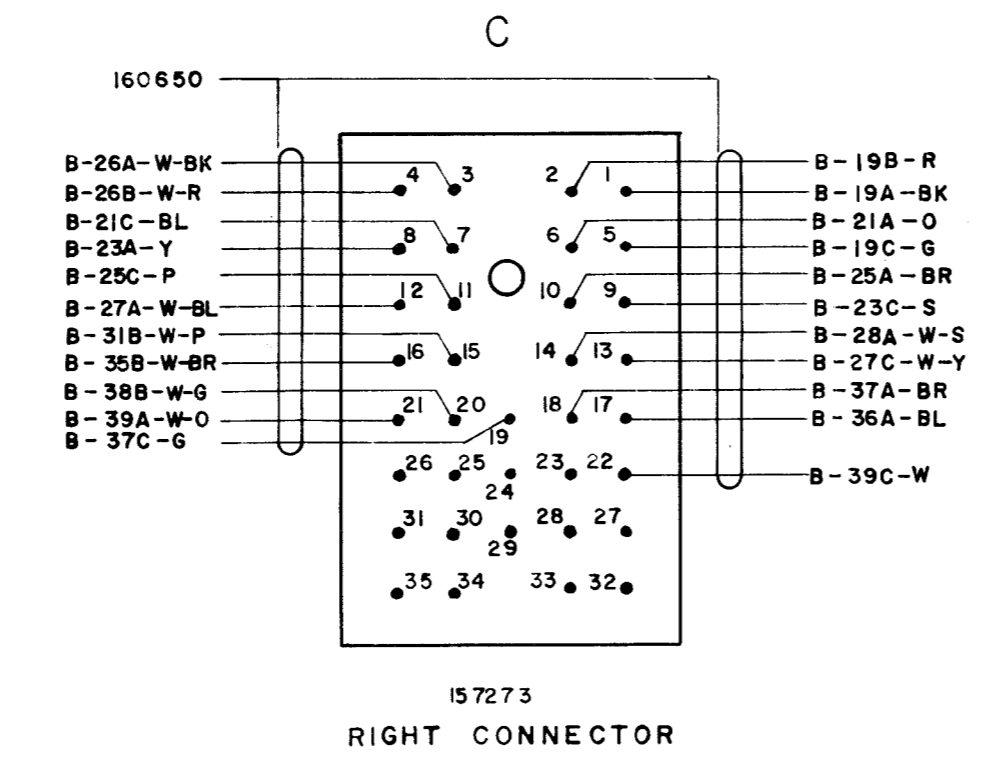
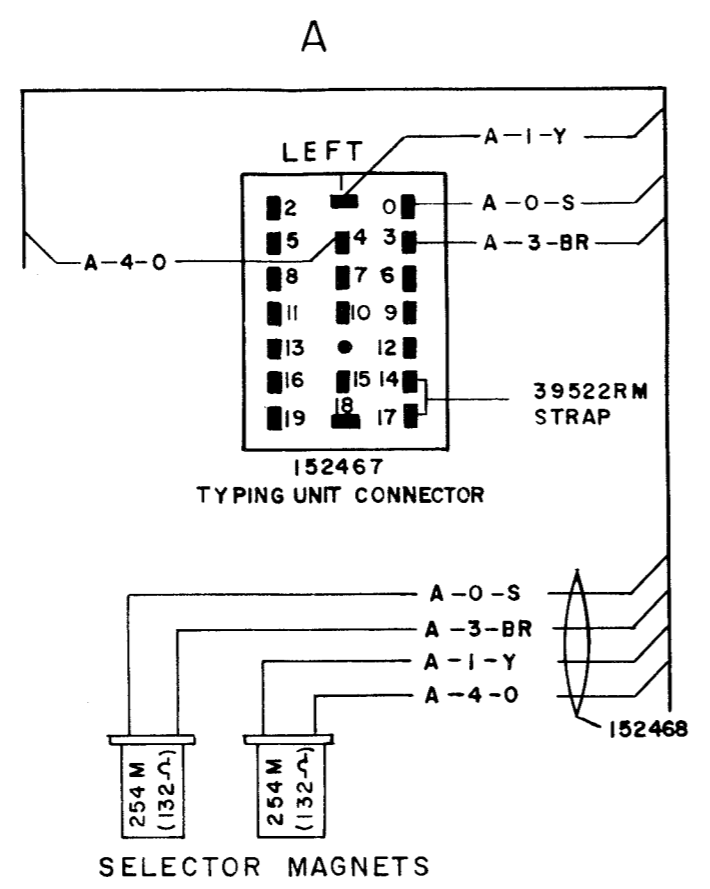
WIRING DIAGRAM
MODEL 28

TYPING UNIT
LP 49
STUNT BOX
AED, AFA, AFB

DATE: 2-22-57
P.D. FILE: 45-30.65 AA
DRAWN: RGA, CHK'D: RLB
ENG: BMB, APP'D: DAL

TELETYPE CORPORATION

NO.	NOTES																		
1	<p>DISTANT TERMINATING AREA DISTANT TERMINAL DESIGNATION C-8-W-BL WIRE COLOR CODE</p>																		
2	<p>COLOR CODE:</p> <table border="0"> <tr> <td>BK - BLACK</td> <td>G - GREEN</td> </tr> <tr> <td>W - WHITE</td> <td>W-BK - WHITE BLACK</td> </tr> <tr> <td>Y - YELLOW</td> <td>W-Y - WHITE YELLOW</td> </tr> <tr> <td>P - PURPLE</td> <td>W-P - WHITE PURPLE</td> </tr> <tr> <td>S - SLATE</td> <td>W-S - WHITE SLATE</td> </tr> <tr> <td>BL - BLUE</td> <td>W-BL - WHITE BLUE</td> </tr> <tr> <td>R - RED</td> <td>W-BR - WHITE BROWN</td> </tr> <tr> <td>BR - BROWN</td> <td>W-O - WHITE ORANGE</td> </tr> <tr> <td>O - ORANGE</td> <td>W-G - WHITE GREEN</td> </tr> </table>	BK - BLACK	G - GREEN	W - WHITE	W-BK - WHITE BLACK	Y - YELLOW	W-Y - WHITE YELLOW	P - PURPLE	W-P - WHITE PURPLE	S - SLATE	W-S - WHITE SLATE	BL - BLUE	W-BL - WHITE BLUE	R - RED	W-BR - WHITE BROWN	BR - BROWN	W-O - WHITE ORANGE	O - ORANGE	W-G - WHITE GREEN
BK - BLACK	G - GREEN																		
W - WHITE	W-BK - WHITE BLACK																		
Y - YELLOW	W-Y - WHITE YELLOW																		
P - PURPLE	W-P - WHITE PURPLE																		
S - SLATE	W-S - WHITE SLATE																		
BL - BLUE	W-BL - WHITE BLUE																		
R - RED	W-BR - WHITE BROWN																		
BR - BROWN	W-O - WHITE ORANGE																		
O - ORANGE	W-G - WHITE GREEN																		
3	X DENOTES DEAD-ENDED LEADS																		
4	CONNECTOR VIEWED FROM SOLDERED TERMINAL ENDS																		
5	<p>TRANSFER CONTACT NORMALLY CLOSED CONTACT</p>																		
6	<p>ASSOCIATED LESU MUST BE EQUIPPED WITH AC-DC CONVERSION ASSEMBLY FOR DC OPERATION OF SIGNAL BELL CONTACTS.</p> <p>152021 FOR LESU 5 152624 FOR LESU 7</p>																		
7	LEADS NOT IDENTIFIED ARE: 39555 RM STRAPPING WIRE 60019 RM TUBING																		



3461 WD

REVISIONS		
ISSUE	DATE	AUTH. NO.
A	10-14-60	28-13541
B		
C		

[Signature]

3461 WD.
CASE. 2537-3

WIRING DIAGRAM
MODEL 28
TYPING UNIT
LP 49
STUNT BOX
AFC

DATE: 11-6-57
PD FILE: 1-30 65.126A
DRAWN F.H.S. CHKD [Signature]
ENGD T.D.C. APP'D [Signature]

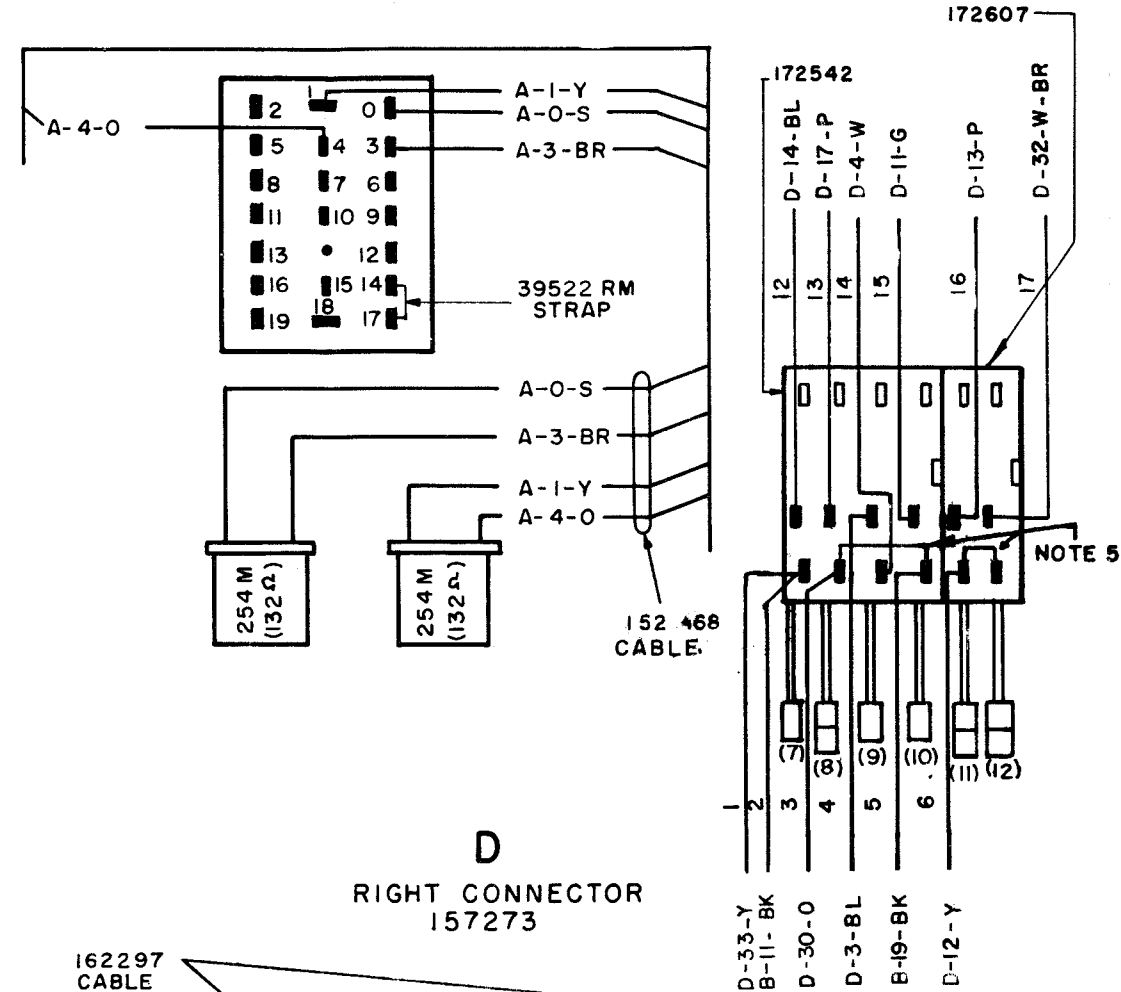
TELETYPE CORPORATION
3461 WD

REVISIONS		
ISSUE	DATE	AUTH. NO.
A	1-19-60	28-12406
B	4-17-60	28-13105
C	10-14-60	28-13541
D	4-7-61	69463

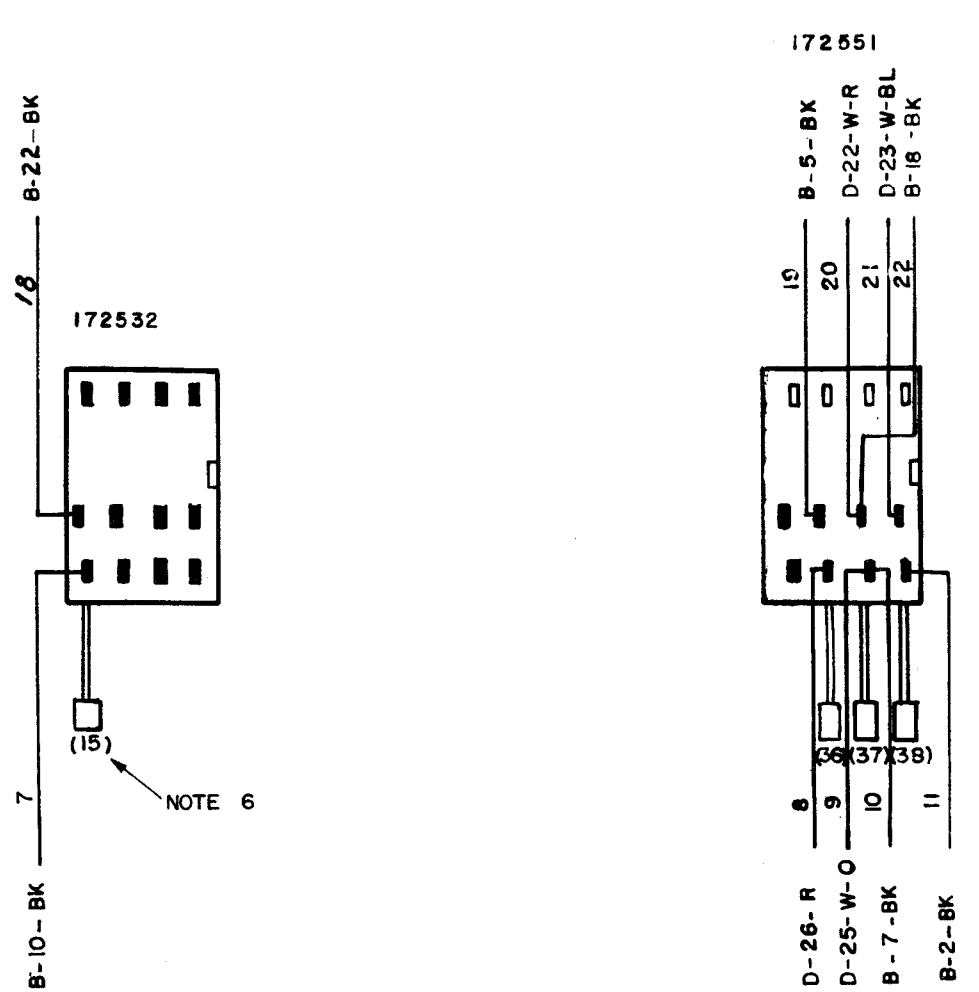
- NO. NOTES
- - COLOR CODE:

R-RED	W-R-WHITE-RED
BL-BLUE	W-BL-WHITE-BLUE
Y-YELLOW	W-Y-WHITE-YELLOW
O-ORANGE	W-O-WHITE-ORANGE
BR-BROWN	W-BR-WHITE-BROWN
S-SLATE	W-S-WHITE-SLATE
BK-BLACK	W-BK-WHITE-BLACK
G-GREEN	W-G-WHITE-GREEN
P-PURPLE	W-P-WHITE-PURPLE
W-WHITE	
 - CONNECTOR VIEWED FROM SOLDERED TERMINAL ENDS.
 -
 - WIRES NOT IDENTIFIED ARE:
39555 RM STRAPPING WIRE
60019 RM TUBING
 - INDICATES NUMBER OF SLOT IN STUNT BOX. ()
 - SPARE WIRES HAVING SAME COLOR CODES MAY BE SOLDERED TO ANY TERMINAL DESIGNATED "SPARE" WITH MATCHING COLOR CODE

A
TYPING UNIT
CONNECTOR (LEFT)



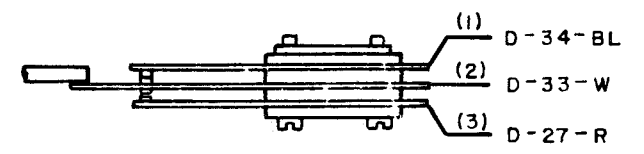
B
STUNT BOX



D
RIGHT CONNECTOR
157273



E
UNIVERSAL CONTACTS



WIRING DIAGRAM
MODEL 28
TYPING UNIT
LP 49
STUNT BOX
AFG

APPROVALS

D AND R E OF M

E-NUMBER

PROD. NO.

DATE: 11-6-58

P.D. FILE NO. I-30.65125A

DRAWN BY: CHKD: [Signature]

ENGD. R.H.L. APPD. [Signature]

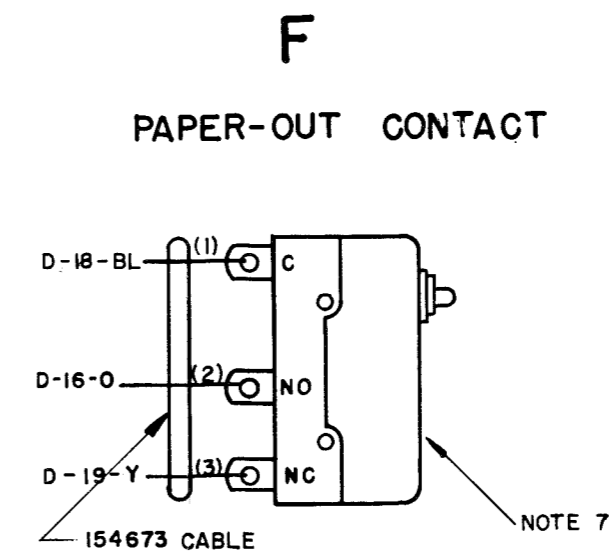
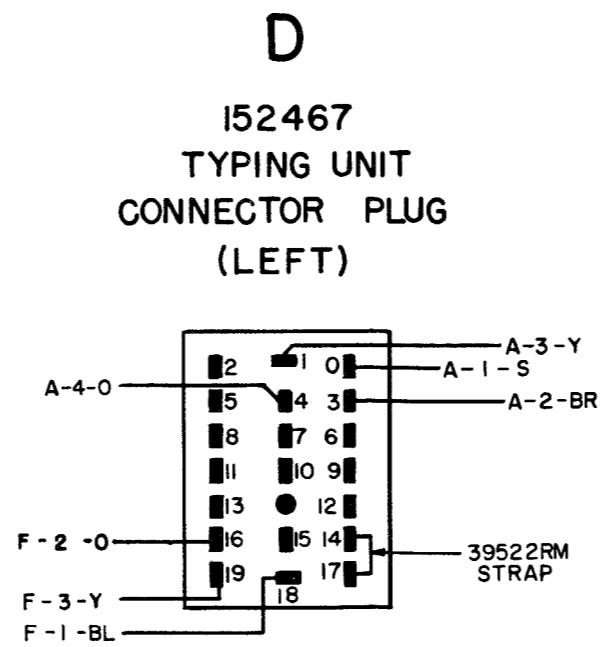
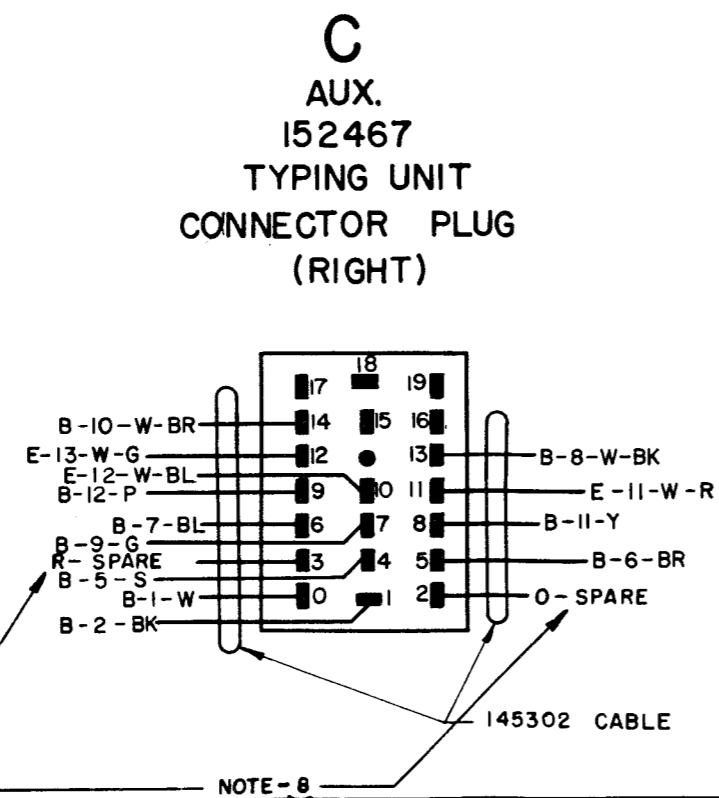
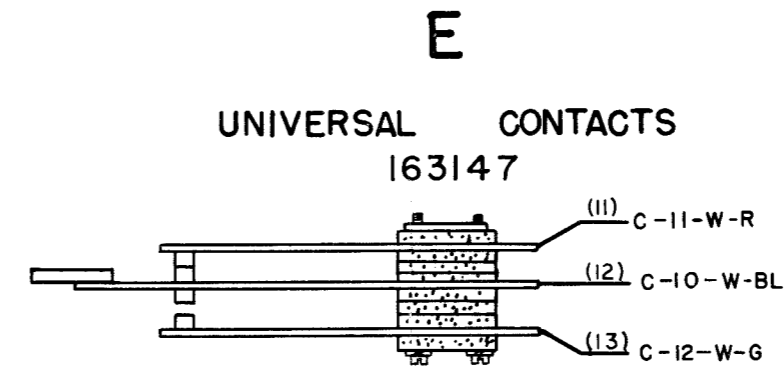
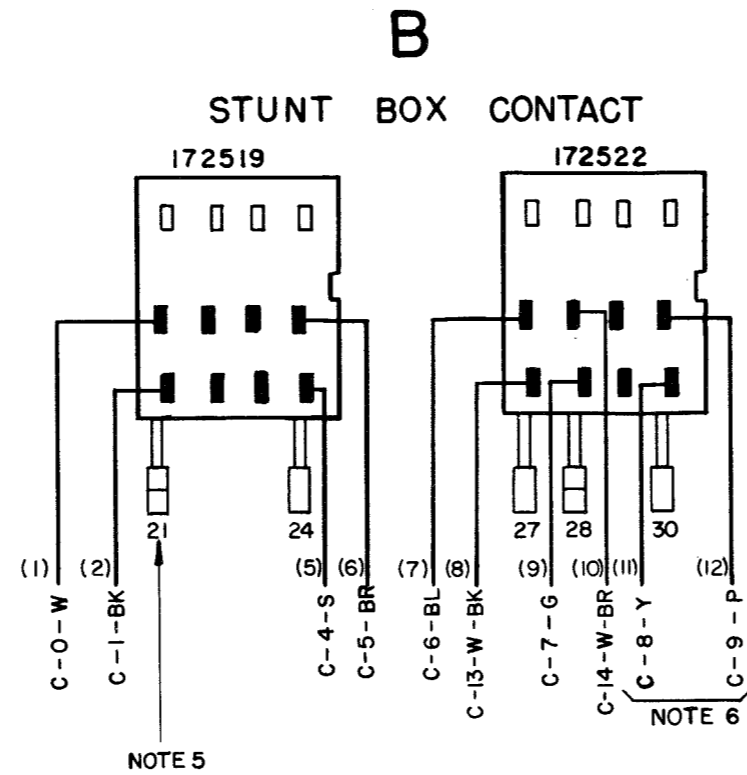
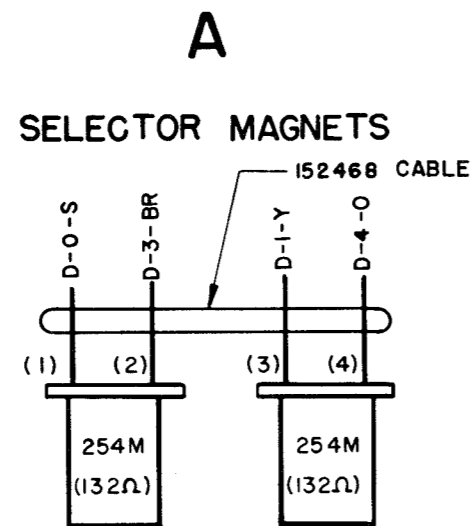
TELETYPE CORPORATION

REVISIONS

ISSUE	DATE	AUTH. NO.
#2	11-18-60	DB-274
#3	8-25-61	70724
4	11-12-65	89477

- NO. NOTES
- CHANNEL LEGEND
 - COLOR CODE

W-WHITE	S-SLATE	Y-YELLOW	W-G-WHITE-GREEN
BK-BLACK	R-RED	P-PURPLE	W-BK-WHITE-BLACK
O-ORANGE	BR-BROWN	W-R-WHITE-RED	W-BR-WHITE-BROWN
B-BLUE	G-GREEN	W-BL-WHITE-BLUE	
 - CONNECTORS VIEWED FROM SOLDERED TERMINAL END.
 -
 - INDICATE SLOT LOCATIONS.
 - WIRE AS SHOWN FOR "AGQ" STUNT BOX ARR'G'T. FOR "AGR, AGP, & AHL" THE YELLOW & PURPLE WIRES ARE TAPED & TIED TO HANDLE.
 - PAPER-OUT CONTACT PART OF LP82 ONLY.
 - SPARES, TAPE & TIE TO HANDLE.



ACTUAL WIRING DIAGRAM FOR MODEL 28 TYPING UNIT LP80, 81, 82, 100 STUNT BOX AGR, AGP, AGQ + AHL

APPROVALS

D AND E OF M

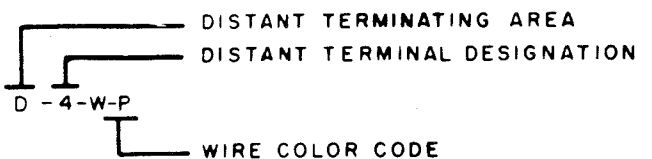
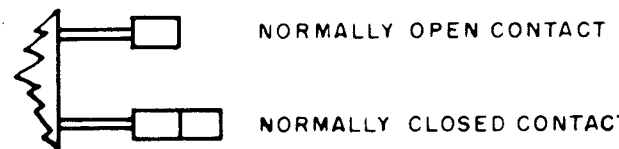
E-NUMBER
PROD. NO. 4228 WD

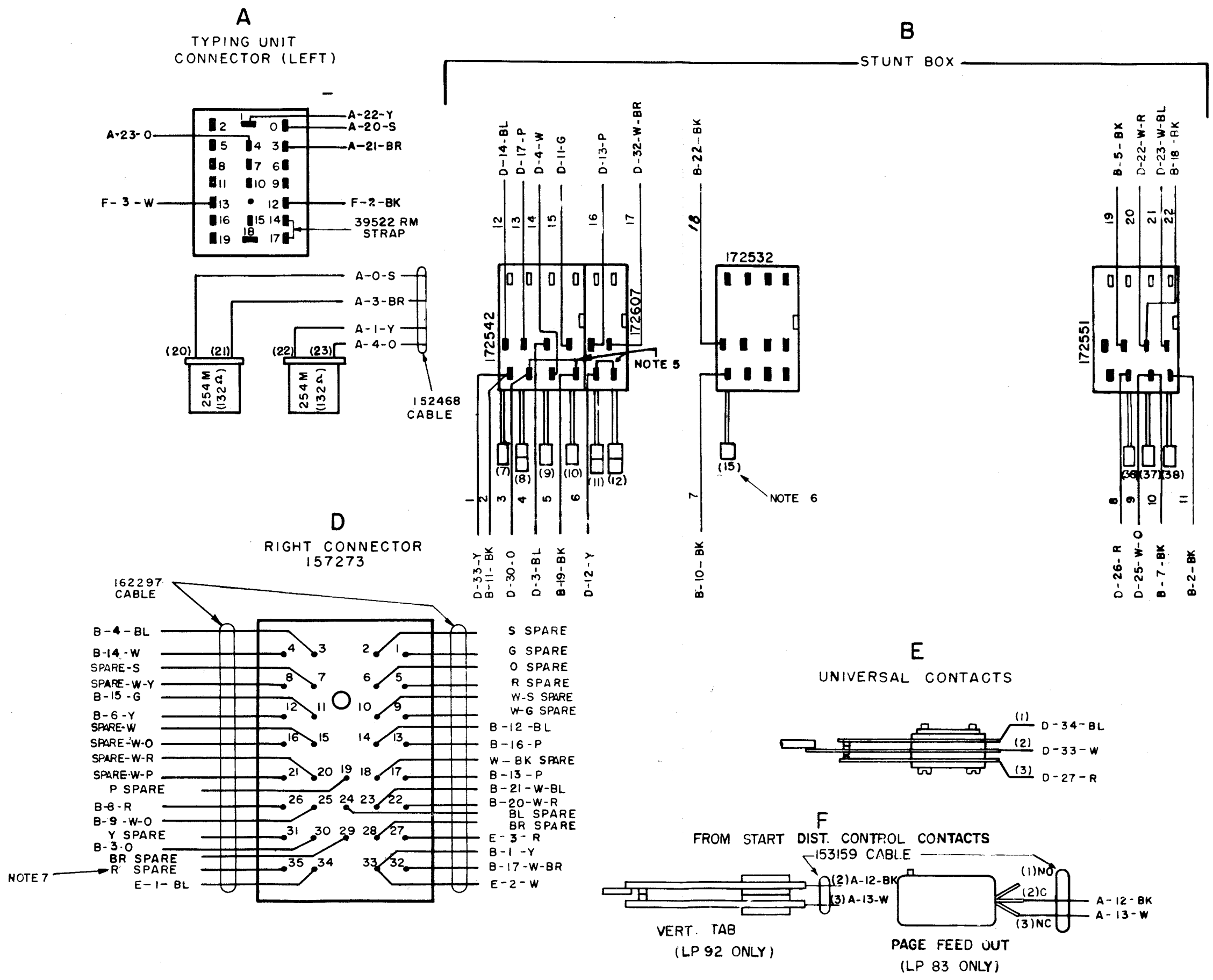
DATE 6-2-60
PD. FILE NO. I-A25/65,219A
DRAWN P.K. CHK'D
ENG'D R.H.L. APP'D

TELETYPE CORPORATION

REVISIONS

ISSUE	DATE	AUTH. NO.
1	10-4-60	28-14007
2	1-4-61	28-14484
3	11-12-65	89477

1.  DISTANT TERMINATING AREA
DISTANT TERMINAL DESIGNATION
D-4-W-P
WIRE COLOR CODE
2. COLOR CODE:
R-RED W-R-WHITE-RED
BL-BLUE W-BL-WHITE-BLUE
Y-YELLOW W-Y-WHITE-YELLOW
O-ORANGE W-O-WHITE-ORANGE
BR-BROWN W-BR-WHITE-BROWN
S-SLATE W-S-WHITE-SLATE
BK-BLACK W-BK-WHITE-BLACK
G-GREEN W-G-WHITE-GREEN
P-PURPLE W-P-WHITE-PURPLE
W-WHITE
3. CONNECTOR VIEWED FROM SOLDERED TERMINAL ENDS.
4.  NORMALLY OPEN CONTACT
NORMALLY CLOSED CONTACT
5. WIRES NOT IDENTIFIED ARE:
39555 RM STRAPPING WIRE
60019 RM TUBING
6. INDICATES NUMBER OF SLOT IN STUNT BOX. ()
7. SPARE WIRES HAVING SAME COLOR CODES MAY BE SOLDERED TO ANY TERMINAL DESIGNATED "SPARE" WITH MATCHING COLOR CODE





WIRING DIAGRAM
MODEL 2B
TYPING UNIT
LP 83,92
STUNT BOX
AGS,AHD

APPROVALS
D AND R E OF M

E-NUMBER
PROD. NO. 4254 WD

DATE: 6-14-60

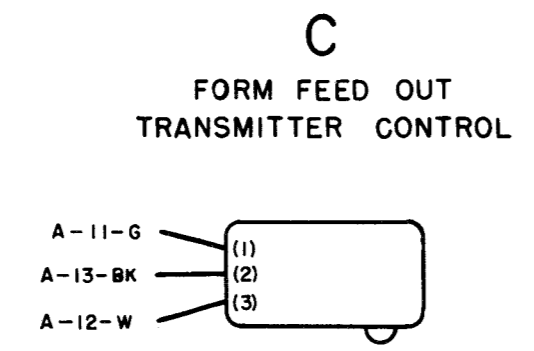
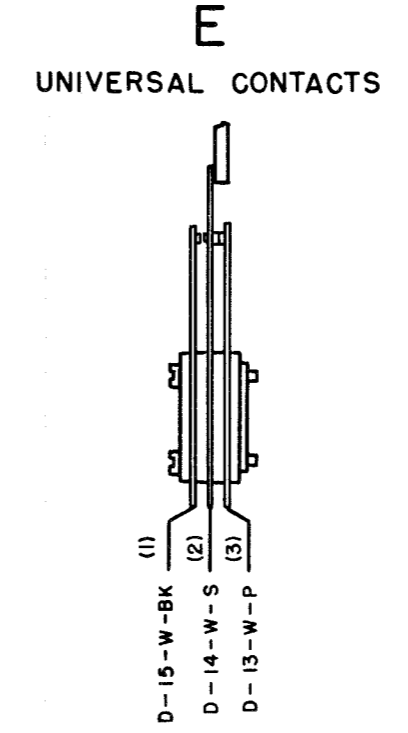
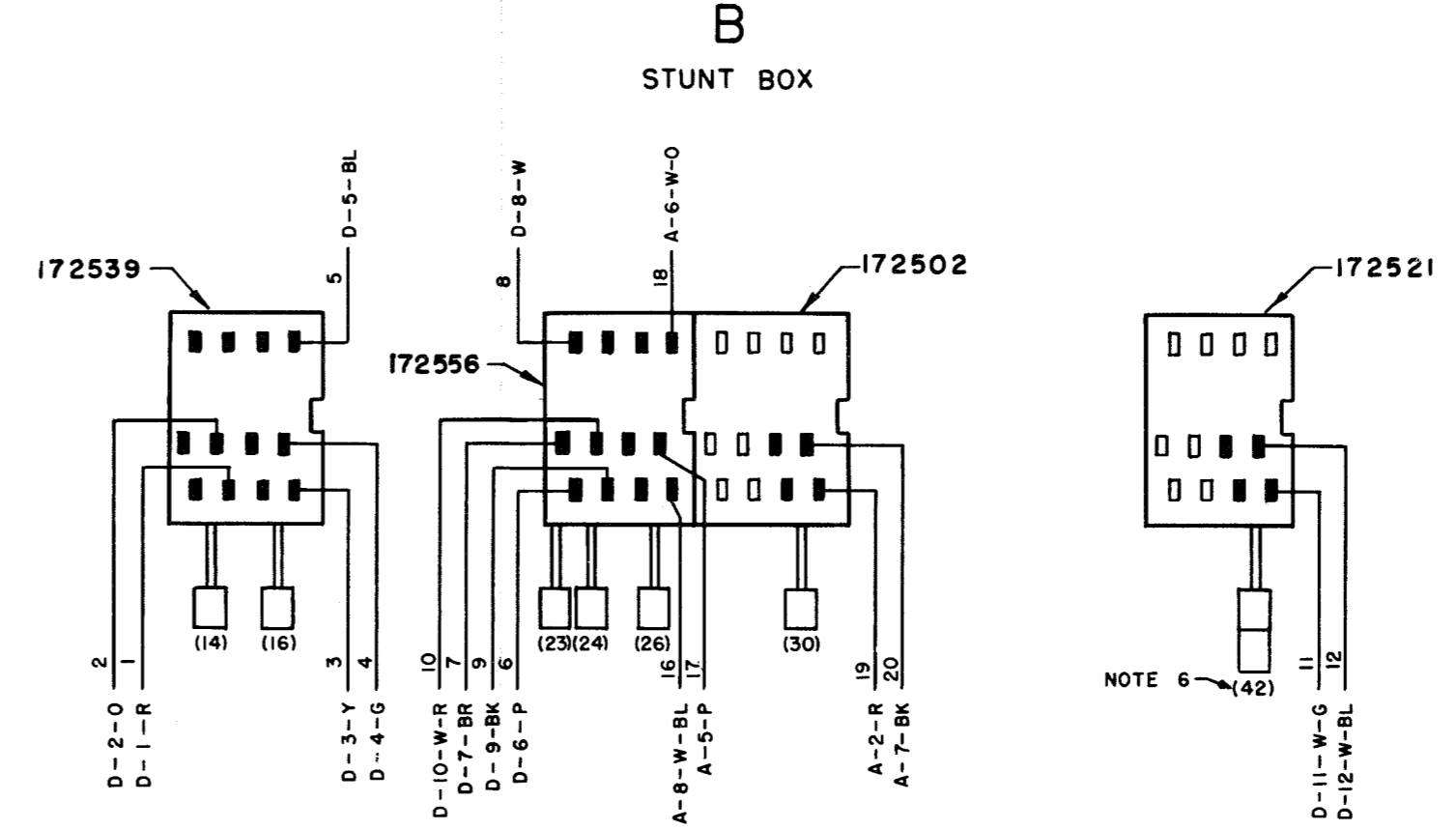
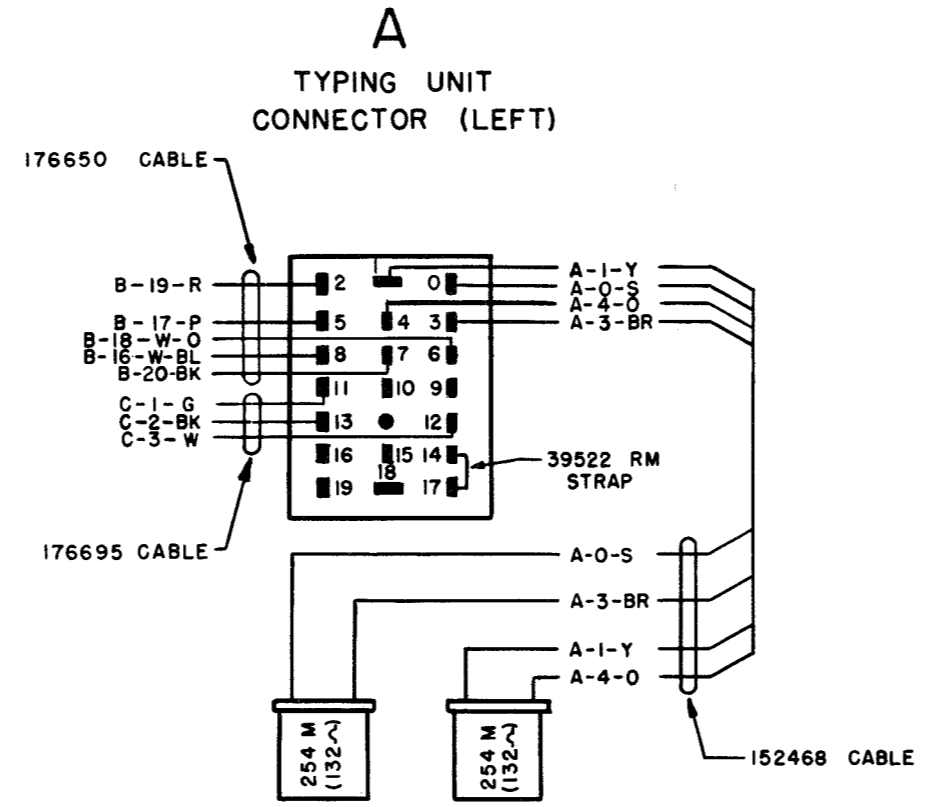
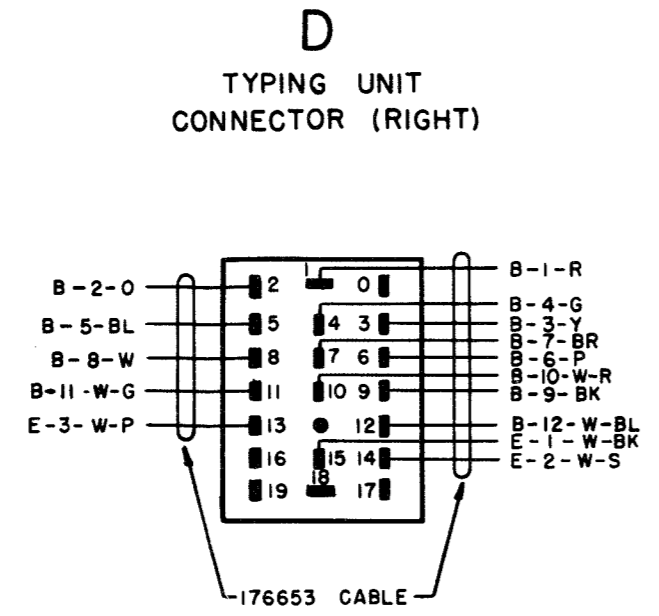
P.D. FILE NO. 1-30.6*125A

DRAWN P.K. CHKD. 
ENG. R.H.L. APP'D. 

TELETYPE CORPORATION

4 4254 WD

NO.	NOTES																				
1.	<p>WIRING LEGEND:</p> <p> DISTANT TERMINATING AREA DISTANT TERMINAL DESIGNATION WIRE COLOR CODE A-2-W-Y </p>																				
2.	<p>COLOR CODE:</p> <table border="0"> <tr> <td>R-RED</td> <td>W-R WHITE-RED</td> </tr> <tr> <td>BL-BLUE</td> <td>W-BL WHITE-BLUE</td> </tr> <tr> <td>Y-YELLOW</td> <td>W-Y WHITE-YELLOW</td> </tr> <tr> <td>O-ORANGE</td> <td>W-O WHITE-ORANGE</td> </tr> <tr> <td>BR-BROWN</td> <td>W-BR WHITE-BROWN</td> </tr> <tr> <td>S-SLATE</td> <td>W-S WHITE-SLATE</td> </tr> <tr> <td>BK-BLACK</td> <td>W-BK WHITE-BLACK</td> </tr> <tr> <td>G-GREEN</td> <td>W-G WHITE-GREEN</td> </tr> <tr> <td>P-PURPLE</td> <td>W-P WHITE-PURPLE</td> </tr> <tr> <td>W-WHITE</td> <td>W-W WHITE</td> </tr> </table>	R-RED	W-R WHITE-RED	BL-BLUE	W-BL WHITE-BLUE	Y-YELLOW	W-Y WHITE-YELLOW	O-ORANGE	W-O WHITE-ORANGE	BR-BROWN	W-BR WHITE-BROWN	S-SLATE	W-S WHITE-SLATE	BK-BLACK	W-BK WHITE-BLACK	G-GREEN	W-G WHITE-GREEN	P-PURPLE	W-P WHITE-PURPLE	W-WHITE	W-W WHITE
R-RED	W-R WHITE-RED																				
BL-BLUE	W-BL WHITE-BLUE																				
Y-YELLOW	W-Y WHITE-YELLOW																				
O-ORANGE	W-O WHITE-ORANGE																				
BR-BROWN	W-BR WHITE-BROWN																				
S-SLATE	W-S WHITE-SLATE																				
BK-BLACK	W-BK WHITE-BLACK																				
G-GREEN	W-G WHITE-GREEN																				
P-PURPLE	W-P WHITE-PURPLE																				
W-WHITE	W-W WHITE																				
3.	CONNECTOR VIEWED FROM SOLDERED TERMINAL ENDS.																				
4.	<p>NORMALLY OPEN CONTACT</p> <p>NORMALLY CLOSED CONTACT</p>																				
5.	WIRES NOT IDENTIFIED ARE: 39555 RM STRAPPING WIRE 60019 RM TUBING																				
6.	INDICATES NUMBER OF SLOT IN STUNT BOX. ()																				



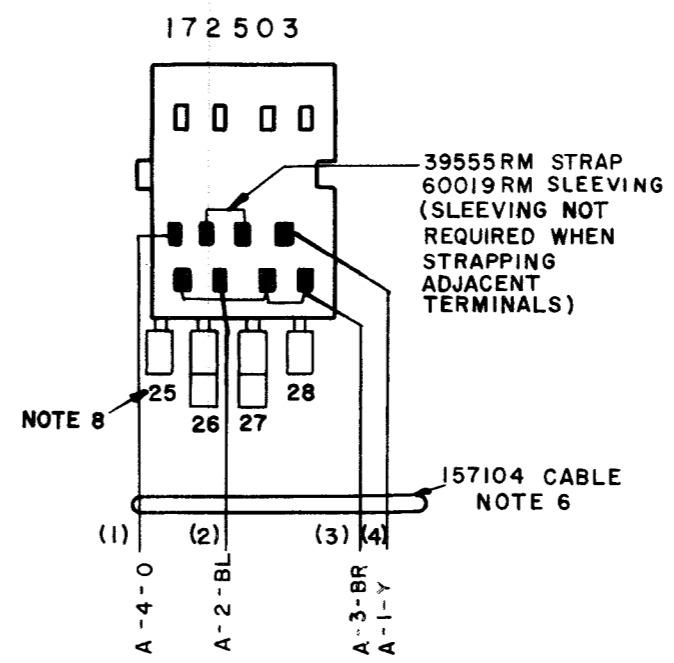
4340 WD		
REVISIONS		
ISSUE	DATE	AUTH. NO.
A	9-21-61	70997

APPROVALS	
D AND R	E OF M
E-NUMBER	
PROD. NO. 4340 WD	
WIRING DIAGRAM MODEL 28 TYPING UNIT LP 93 STUNT BOX AHE	
DATE: 12-30-60	
P.D. FILE NO. 22-A65.219A	
DRAWN J.W.P. CHKD.	
ENGD. G.E.W. APPD.	
TELETYPE CORPORATION	
4340 WD	

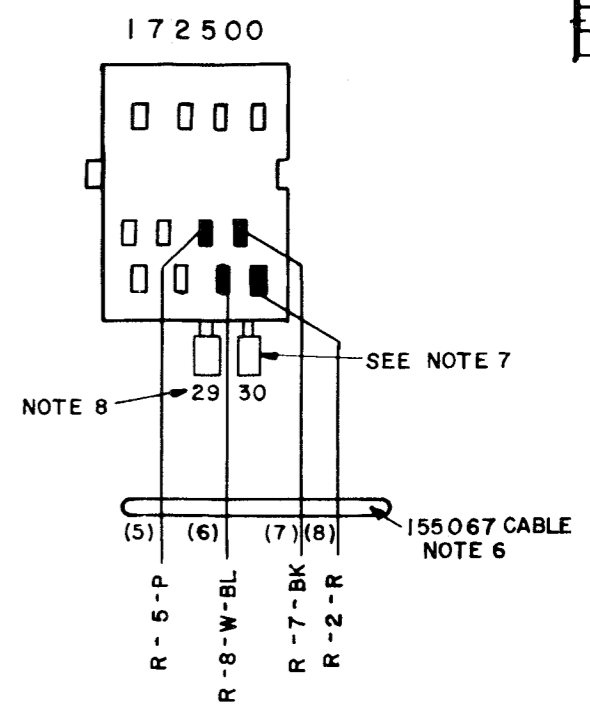
ISSUE	DATE	AUTH. NO.
1	6-28-62	73882
2	11-13-63	78059
4	1-9-65	85722
5	3-16-66	90529

STUNT BOX ARRANGEMENTS

AGZ, AHA, AHC

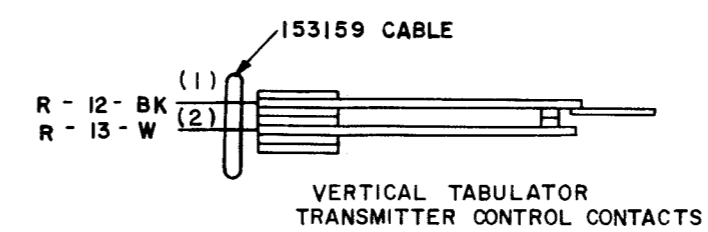


AGX, AGY, AHB

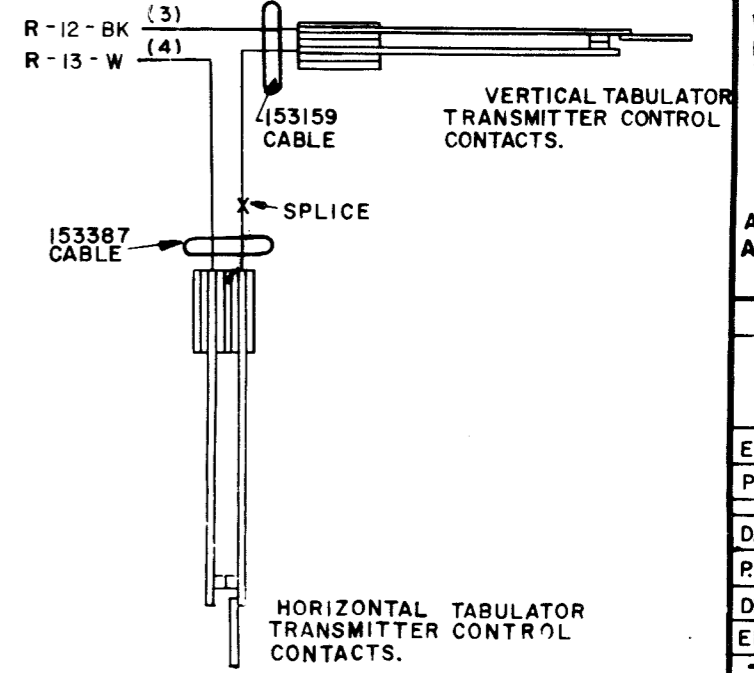


TYPING UNIT ARRANGEMENTS

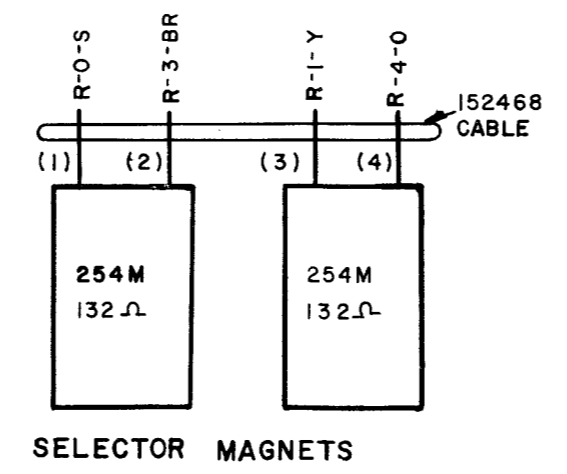
LP86, 88, 90, 91, 131



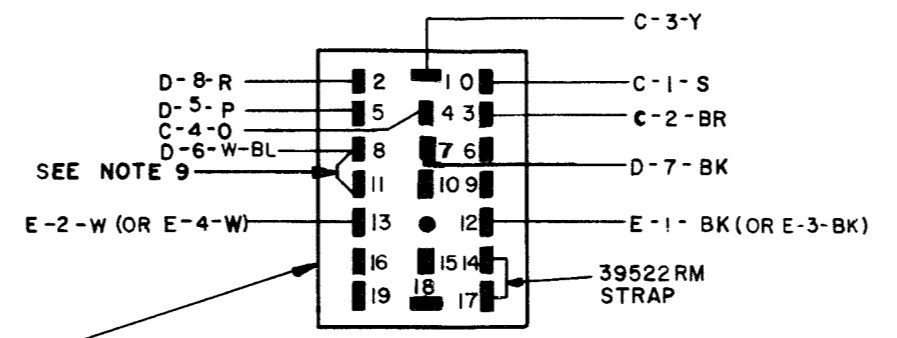
LP87, 89



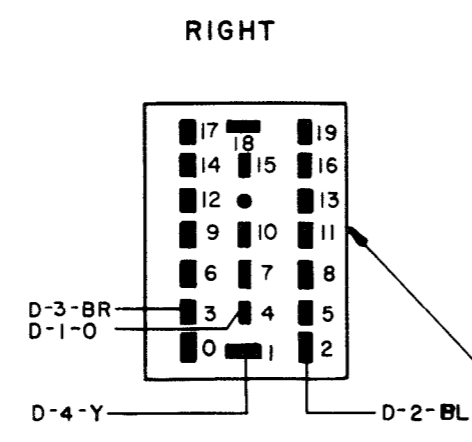
C



R



A



152467
TYPING UNIT
CONNECTORS
(MALE)

NOTES

- CHANNEL LEGEND

 C-8-W-BL WIRE COLOR CODE
- POWER CIRCUITS WIRED FOR 115V-60A.C. OR 115V.D.C. OPERATION
- COLOR CODE
 BK - BLACK P - PURPLE
 W - WHITE R - RED
 Y - YELLOW BR - BROWN
 S - SLATE O - ORANGE
 BL - BLUE
- CONNECTORS VIEWED FROM SOLDERED TERMINAL ENDS.
- ASSOCIATED LESU MUST BE EQUIPPED WITH AC-DC CONVERSION ASSEMBLY FOR D.C. OPERATION OF SIGNAL BELL CONTACTS. 152021 FOR LESU5. 152624 FOR LESU7.
- THIS CABLE FURNISHED WITH STUNT BOX.
- NORMALLY OPEN CONTACT

 NORMALLY CLOSED CONTACT
- INDICATES BK OF SLOT IN STUNT BOX.
- USE 39522 RM FOR LP 122 (AGX).

ACTUAL WIRING DIAGRAM FOR MODEL 28 TYPING UNITS LP86, 87, 88, 89, 90, 91, 122, 95, 97, 102, 131

STUNT BOXES AGX, AGY, AGZ, AHA, AHB, AHC

APPROVALS

D AND R: [Signature]
E OF M: [Signature]

E-NUMBER
PROD. NO. 4355WD

DATE 12-13-60

P.D. FILE NO. 1-30-65-48A

DRAWN L. J. F. CHKD. [Signature]
ENGD. E. F. D. APPD. [Signature]

TELETYPE CORPORATION
4355WD

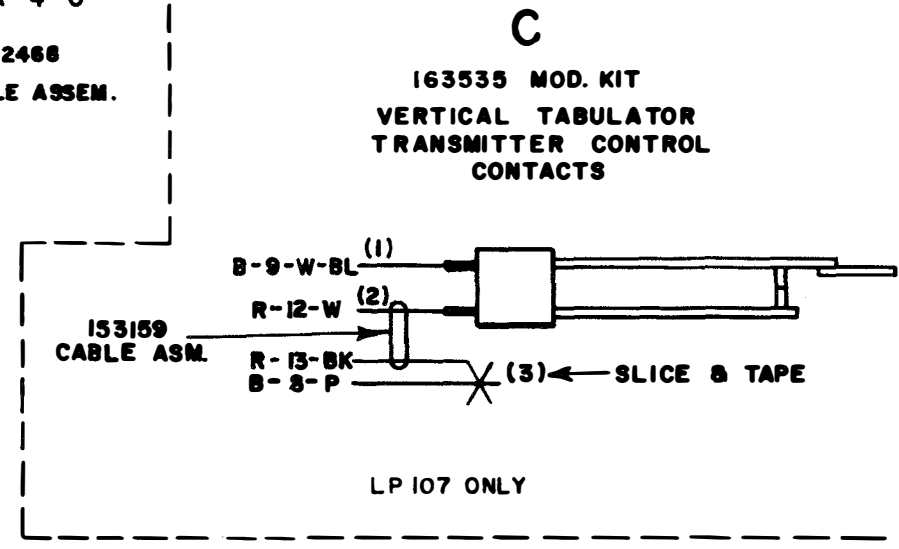
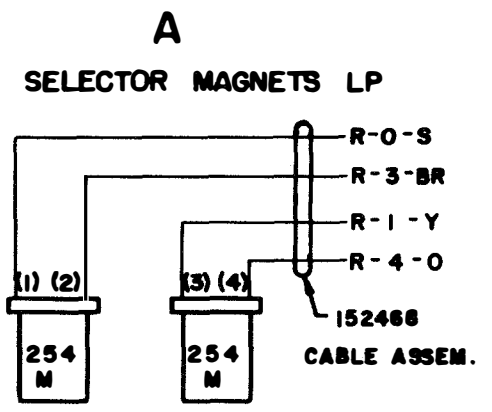
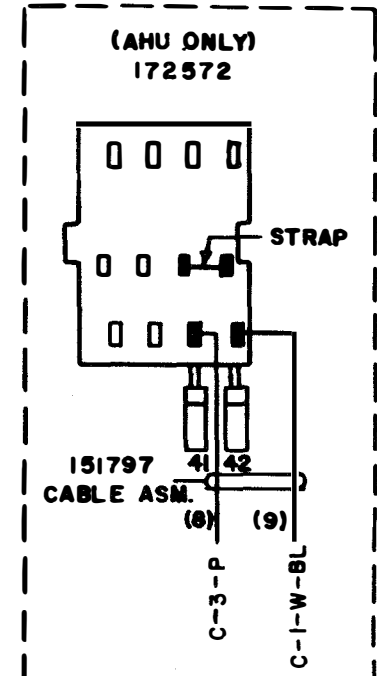
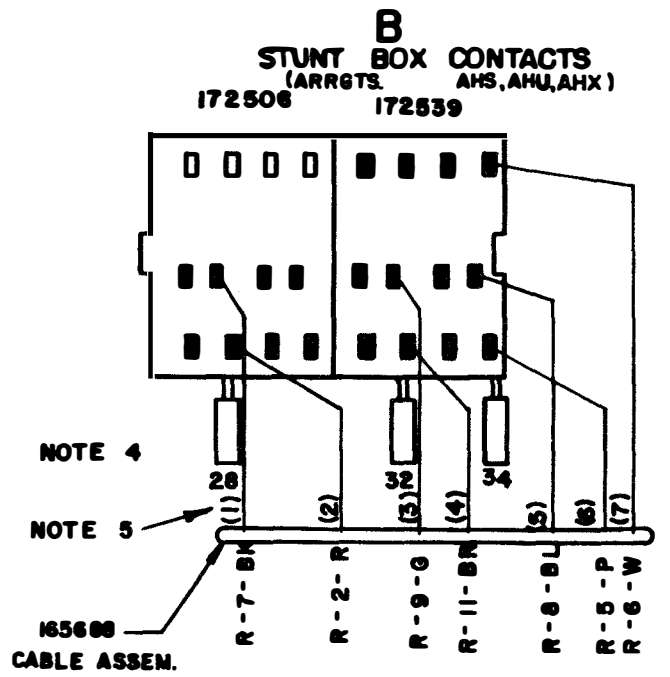
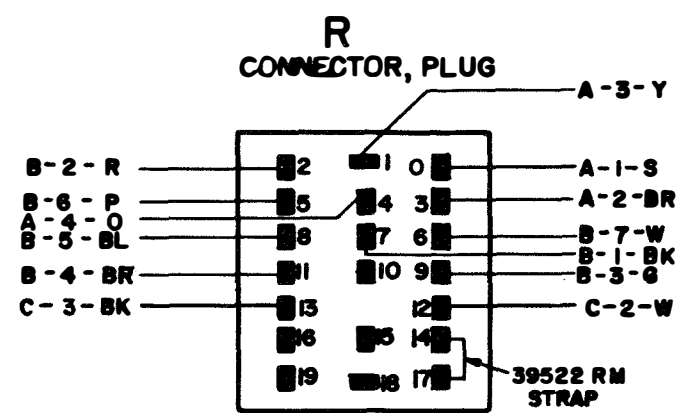
ISSUE	DATE	AUTH. NO.
A	3-15-62	72787
B	10-24-62	74883
C	12-19-62	75387

- NO. NOTES**
- WIRING LEGEND**

DISTANT TERMINATING AREA
 DISTANT TERMINAL DESIGNATION
 WIRE COLOR CODE

D-4-W-P
 - COLOR CODE**

R - RED	BL - BLUE
Y - YELLOW	O - ORANGE
BR - BROWN	S - SLATE
BK - BLACK	G - GREEN
P - PURPLE	W - WHITE
 - CONNECTOR VIEWED FROM SOLDERED TERMINAL END.
 - INDICATES NUMBER OF SLOT IN STUNT BOX.
 - NUMBERS INDICATED (1) ARE FOR LEAD IDENTIFICATION ONLY AND ARE NOT NECESSARILY STAMPED ON COMPONENTS.
 - NORMALLY OPEN CONTACT
 NORMALLY CLOSED CONTACT



ACTUAL WIRING DIAGRAM FOR MODEL 28 TYPING UNITS LP106AHS,AHR LP107AHU LP21AHX

APPROVALS

D AND R	E OF M
<i>[Signature]</i>	<i>[Signature]</i>
E-NUMBER	
PROD. NO. 4905 WD	
DATE: 11-13-61	
P.D. FILE NO. 5-A100AA	
DRAWN. EE	CHKD. <i>[Signature]</i>
ENG. T.D.C.	APPD. <i>[Signature]</i>

TELETYPE CORPORATION

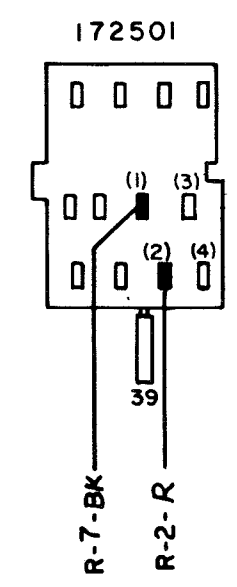
REVISIONS		
ISSUE NO.	DATE	AUTHOR. NO.
1	3-4-65	86301
2	3-4-66	89998
3	5-31-66	90956
4	6-19-67	93282
5	6-17-68	95904

- NOTES**
- CHANNEL LEGEND:**

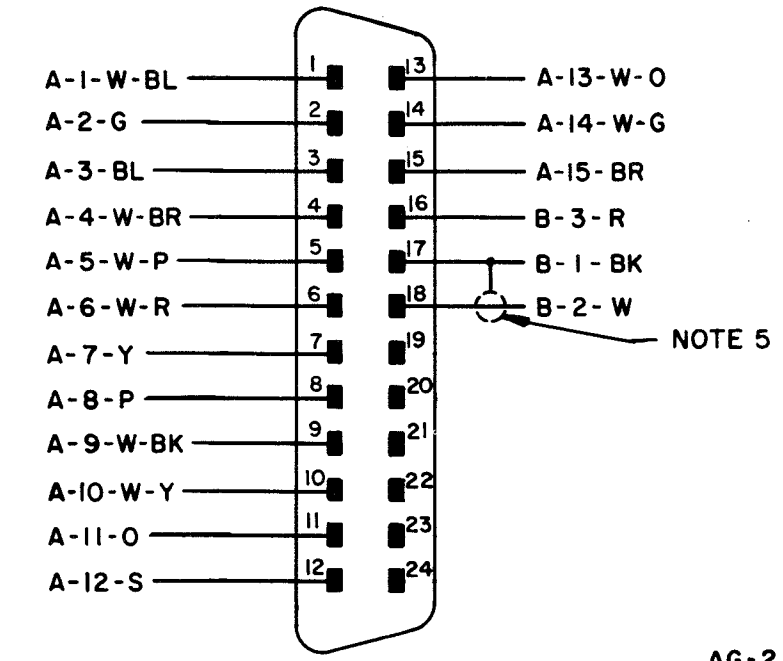
CHANNEL IDENTIFICATION
 CHANNEL WIRE NUMBER
 C-8-W
 WIRE COLOR CODE
 - COLOR CODE:**
 BK-BLACK BL-BLUE
 W-WHITE R-RED
 Y-YELLOW BR-BROWN
 P-PURPLE O-ORANGE
 S-SLATE G-GREEN
 - CONNECTOR VIEWED FROM SOLDERED TERMINAL ENDS.**
 - NORMALLY OPEN CONTACT
 NORMALLY CLOSED CONTACT
 - SHIELDED CABLE
 - ASSOCIATED CABLE ASSEMBLIES:**
 CABLE ASSEMBLY - 152468 (R-D)
 " " " " - 153592 (R-C)
 " " " " - 158318 (R-E)

 " " " " - 198656 (A-B-AG)
 " " " " - 164477 (R-F)
 - USED ON LPI55 ONLY.**

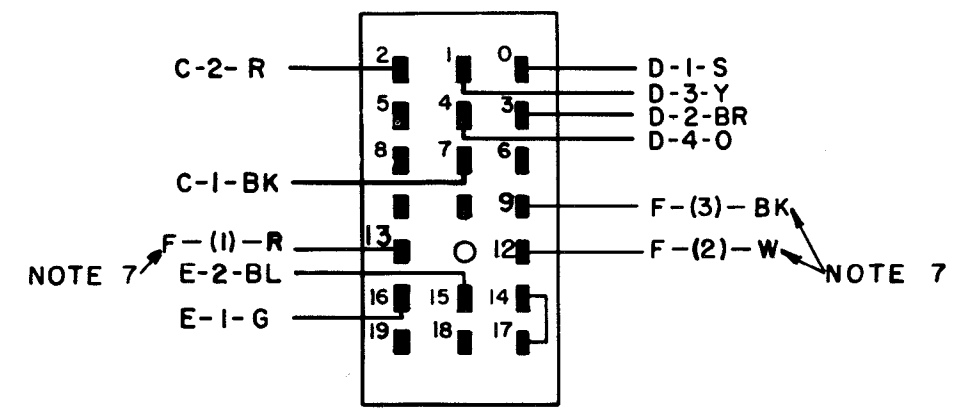
C
STUNT BOX ARRANGEMENT



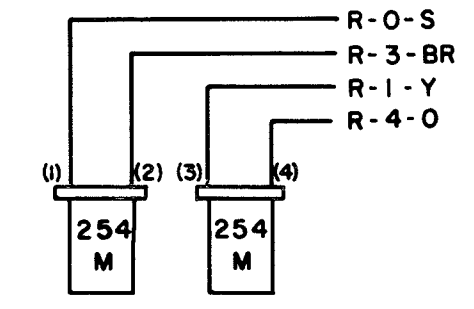
AG
CONNECTOR
142898



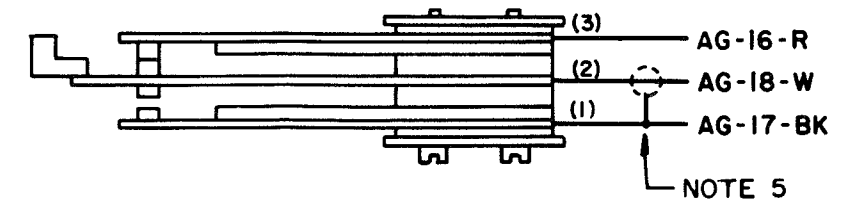
R
PRINTER CONNECTOR



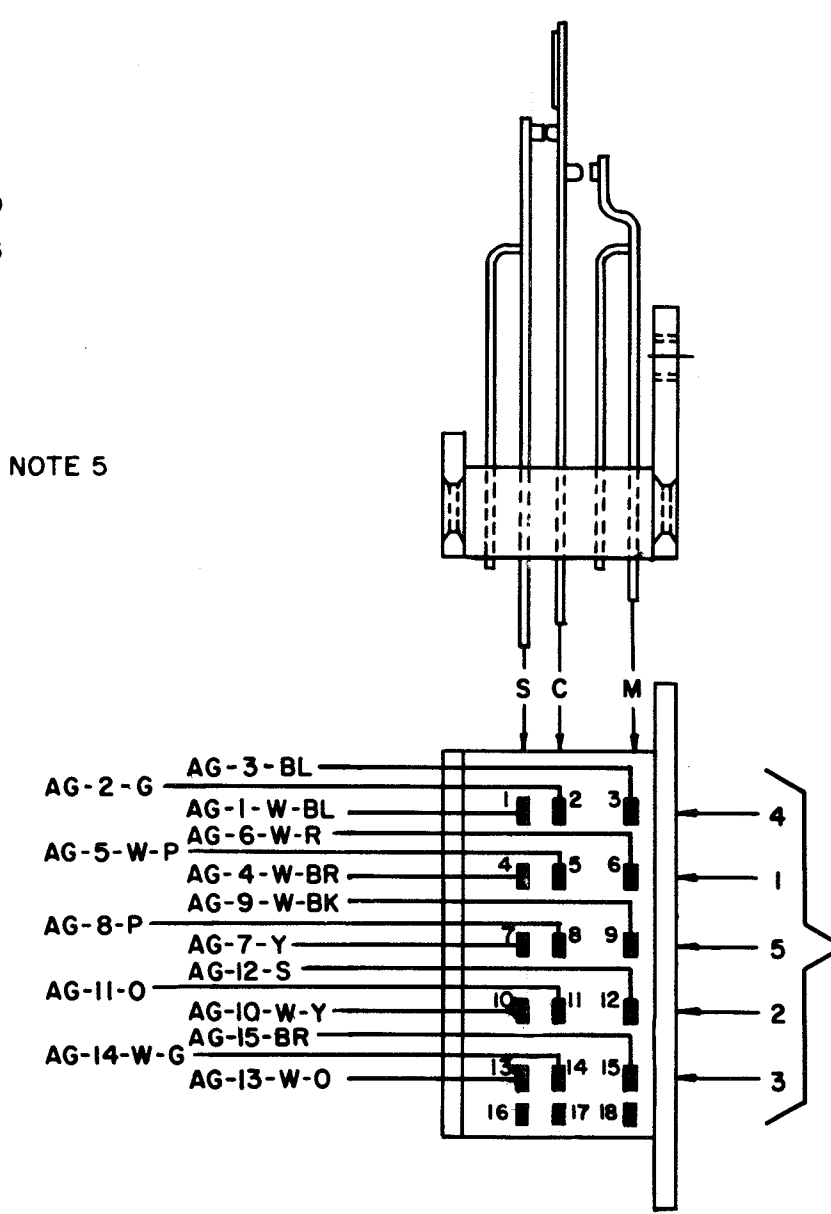
D
SELECTOR MAGNETS



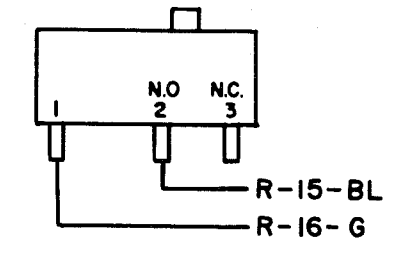
B
UNIVERSAL CONTACTS
163146



A
CODE SENSING SWITCH
173886



E
PAPER-OUT ALARM SWITCH



LEGEND
 S = SPACING
 C = COMMON
 M = MARKING

ACTUAL WIRING DIAGRAM FOR MODEL 28 TYPING UNITS LPI55 & LPI55 STUNT BOX AJR AJB

APPROVALS

R/S D E OF M
 DATE: 6-8-63
 P.D. FILE: 25-A65.219A
 E-NO.
 PROD. NO. 6487 WD
 DRAWN: E.M. CHKD: [Signature]
 ENG: J.C.F. APPD: [Signature]

TELETYPE CORPORATION
 6487 WD

ISSUE CONTROL RECORD

7020 WD

NO.	NOTES	SUPPORTING INFORMATION		CONTENTS	SHEET NO.	ISSUE														REVISIONS APPLYING TO THIS CONTROL RECORD					
		CATEGORY	NO.			2	3	4	5	6	7	8	9	10	11	12	13	14	15	16	17	18	19	ISSUE	DATE
					1	X	X	X	X	X	X	X											1	6-27-66	90553
					2	X	X	X	X	X															

ISSUE CONTROL SHEET 1 OF 1

ACTUAL WIRING DIAGRAM FOR MODEL 28 TYPING UNIT LPI1B, 119, 120 STUNT BOX AJM, AJN, AJP

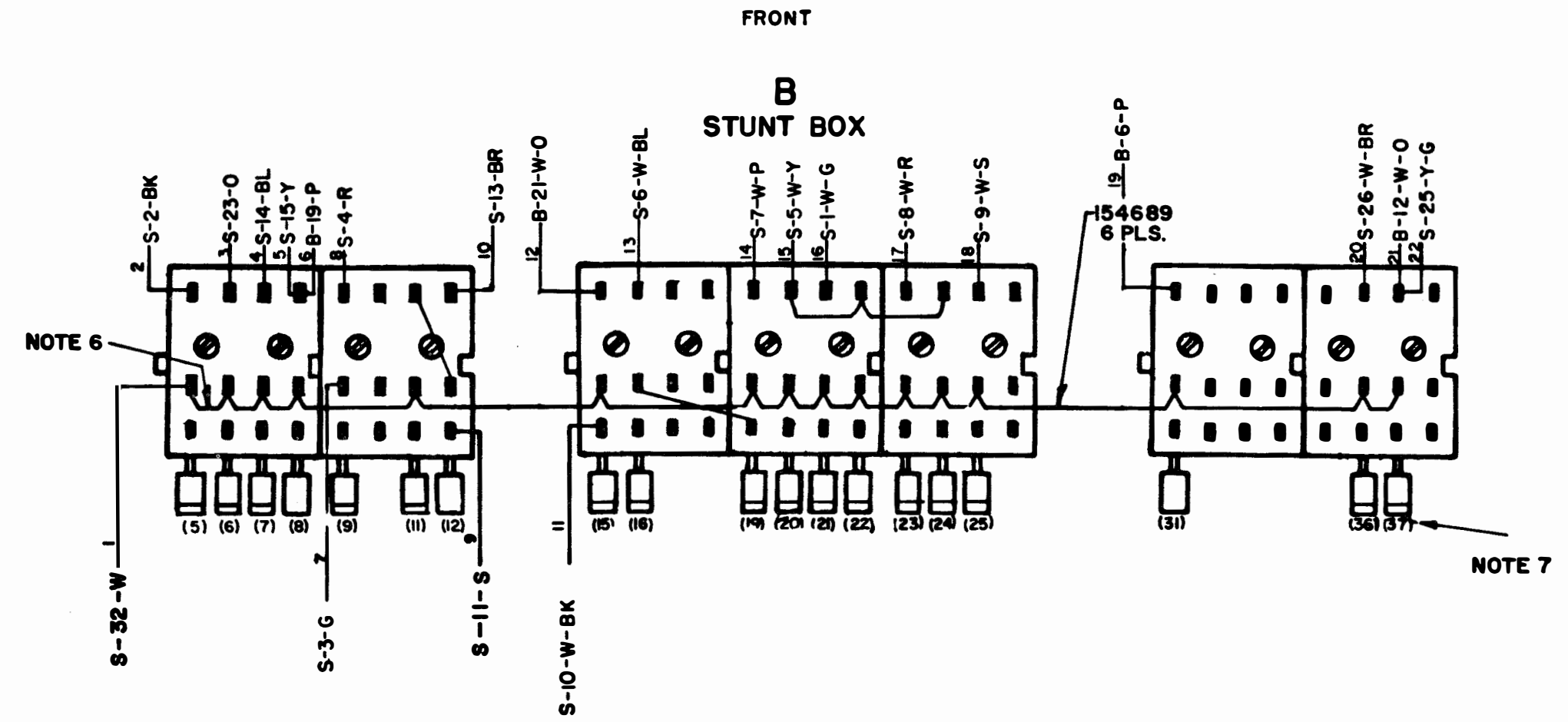
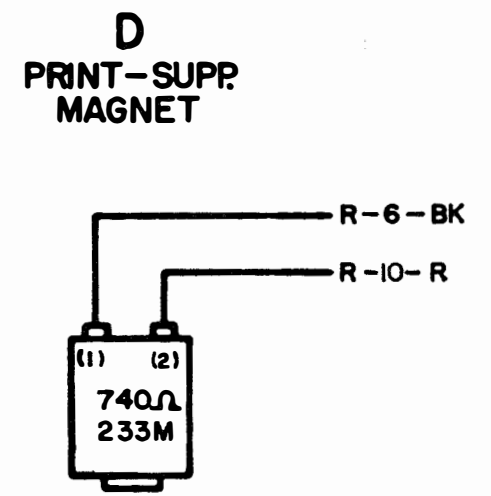
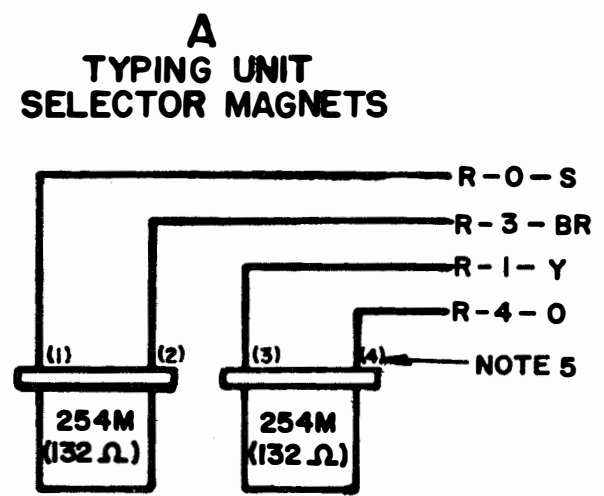
WD NUMBER 7020WD	
DRAWN C.J.R.	CHKD.
ENGD D.A.K.	APPD.

TELETYPE CORPORATION

7020 WD

TC 626 (1-66) SEE R&D ROUTINE #5 FOR USE OF THIS FORM

NO.	NOTES
1.	WIRING LEGEND:
2.	WIRE COLOR CODE R-RED S-SLATE BL-BLUE BK-BLACK Y-YELLOW G-GREEN O-ORANGE P-PURPLE BR-BROWN W-WHITE
3.	CONNECTOR VIEWED FROM SOLDERED TERMINAL ENDS.
4.	
5.	TERMINAL DESIGNATIONS ENCLOSED IN PARENTHESES ARE NOT MARKED ON COMPONENTS.
6.	39603RM STRAP, 60019RM SLEEVING (NOT REQUIRED WHEN STRAPPING ADJACENT TERMINALS).
7.	INDICATES SLOT LOCATIONS.
8.	ASSOCIATED CABLES: 152468, 199510, 199816
9.	LP119 E/W VERT. TAB ONLY WIRE CONTACTS DIRECTLY TO R12 & R13. LP120 E/W VERT. TAB AND HORIZ. TAB SPLICE BK WIRE OF V.T. CONTACTS TO BK WIRE OF H.T. CONTACTS. WIRE G WIRE OF V.T. CONTACTS TO R12 AND R WIRE OF H.T. CONTACTS TO R12.
10.	WHEN VIEWING CONNECTOR AS INSTALLED ON LP POSITION OF THE LOCATING HOLE IS ROTATED 180°.



NOTE: REVISION INFORMATION MUST ALSO BE REFLECTED ON THE ISSUE CONTROL RECORD, WHICH IS A PART OF THIS DRAWING.

7020 WD		
REVISIONS		
ISSUE	DATE	AUTH. NO.
2	2-10-64	79965
3	2-24-64	80396
4	3-2-64	80396-1
5	6-3-65	87333
6	8-13-65	88115
7	3-7-66	89873
8	6-27-66	90553

SEE ISSUE CONTROL RECORD FOR COMPLETE LIST OF SHEETS COMPRISING THIS W.D.

SHEET 1

ACTUAL WIRING DIAGRAM FOR MODEL 28 TYPING UNIT LPI18, 119, 120 STUNT BOX AJM, AJN, AJP

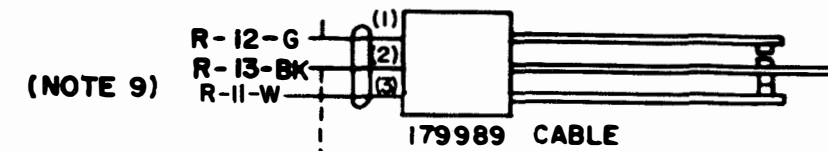
APPROVALS	
D AND R	E OF M
E-NUMBER	
PROD. NO. 7020WD	
DATE: 10-22-63	
P.D. FILE NO. 11-A25AA	
DRAWN. RLW	CHKD.
ENGD. DAK	APPD.
TELETYPE CORPORATION	
7020 WD	

SEE SHEET 1 FOR NOTES

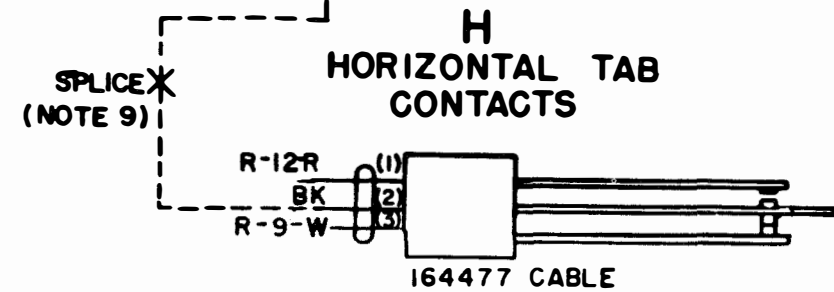
E
UNIVERSAL CONTACTS



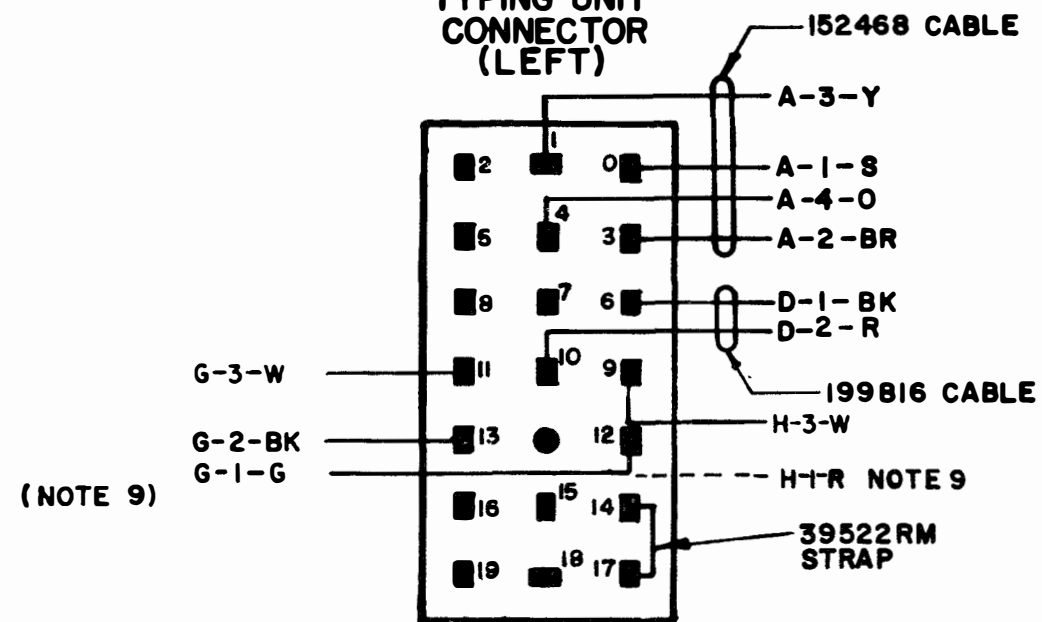
G
VERTICAL TAB CONTACTS



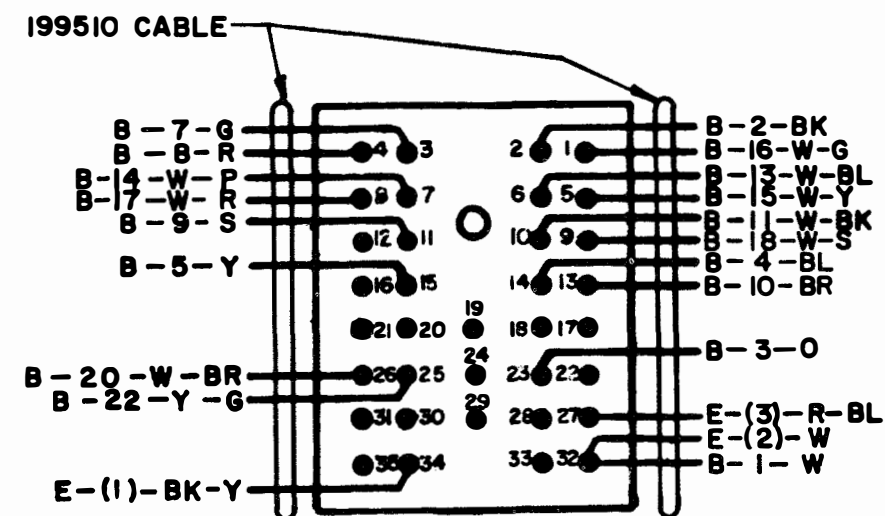
H
HORIZONTAL TAB CONTACTS



R
TYPING UNIT CONNECTOR (LEFT)



S
RIGHT CONNECTOR (NOTE 10)



NOTE: REVISION INFORMATION MUST ALSO BE REFLECTED ON THE ISSUE CONTROL RECORD, WHICH IS A PART OF THIS DRAWING.

7020 WD

REVISIONS

ISSUE	DATE	AUTH. NO.
2	2-10-64	79965
3	2-24-64	80396
4	3-2-64	80396-1
5	6-3-65	87333
6	5-7-66	88873

SEE ISSUE CONTROL RECORD FOR COMPLETE LIST OF SHEETS COMPRISING THIS W.D.

SHEET 2

ACTUAL WIRING DIAGRAM FOR MODEL 28 TYPING UNIT LPI18, 119, 120 STUNT BOX AJM, AJN, AJP

APPROVALS

D AND R E OF M

E-NUMBER
PROD. NO. 7020WD

DATE: 10-22-63
P.D. FILE NO. 11-A25AA

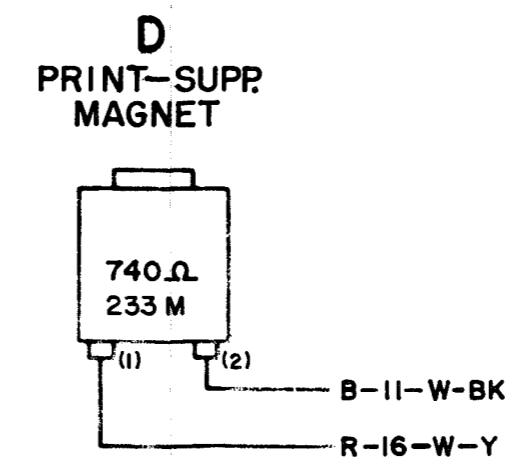
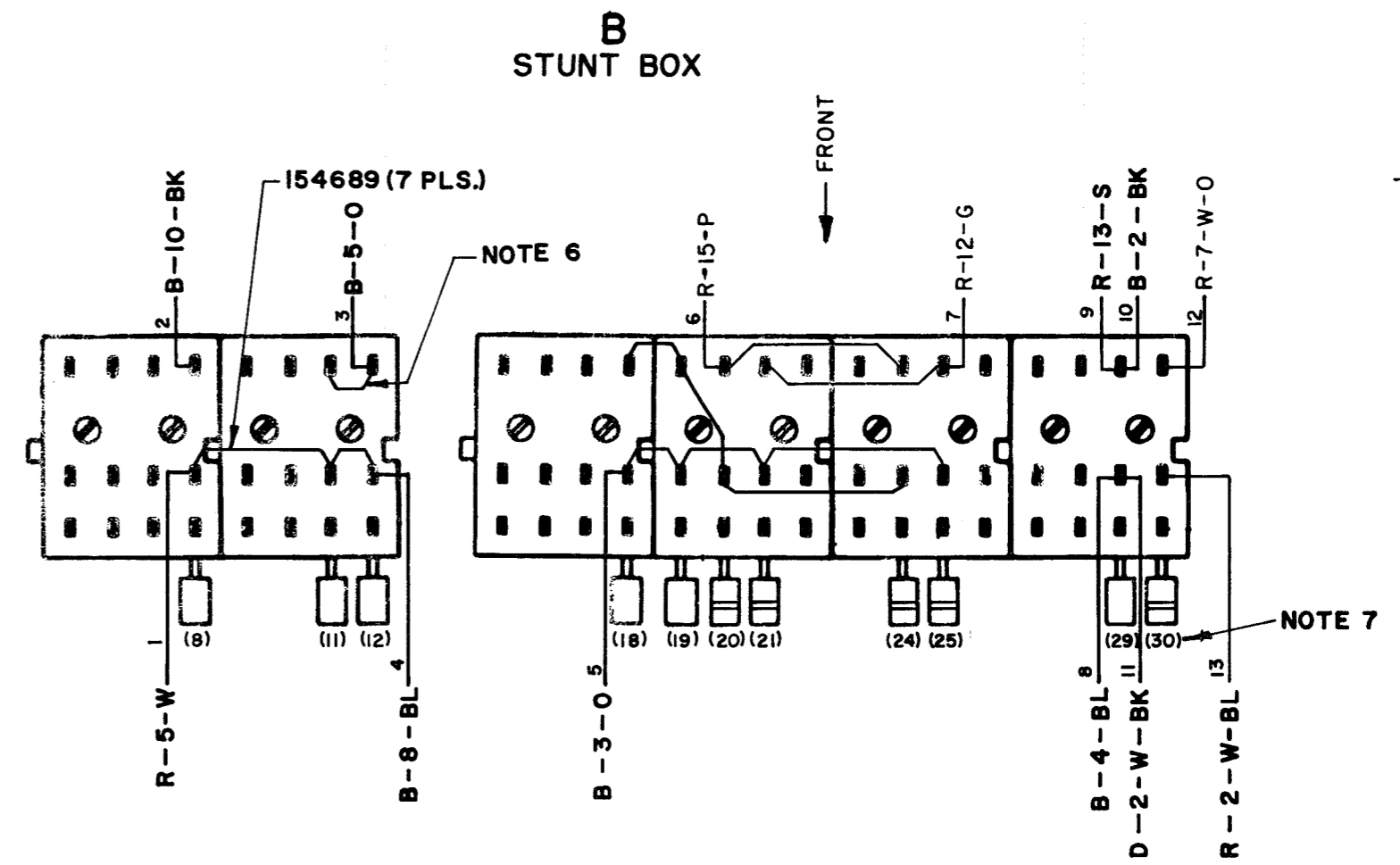
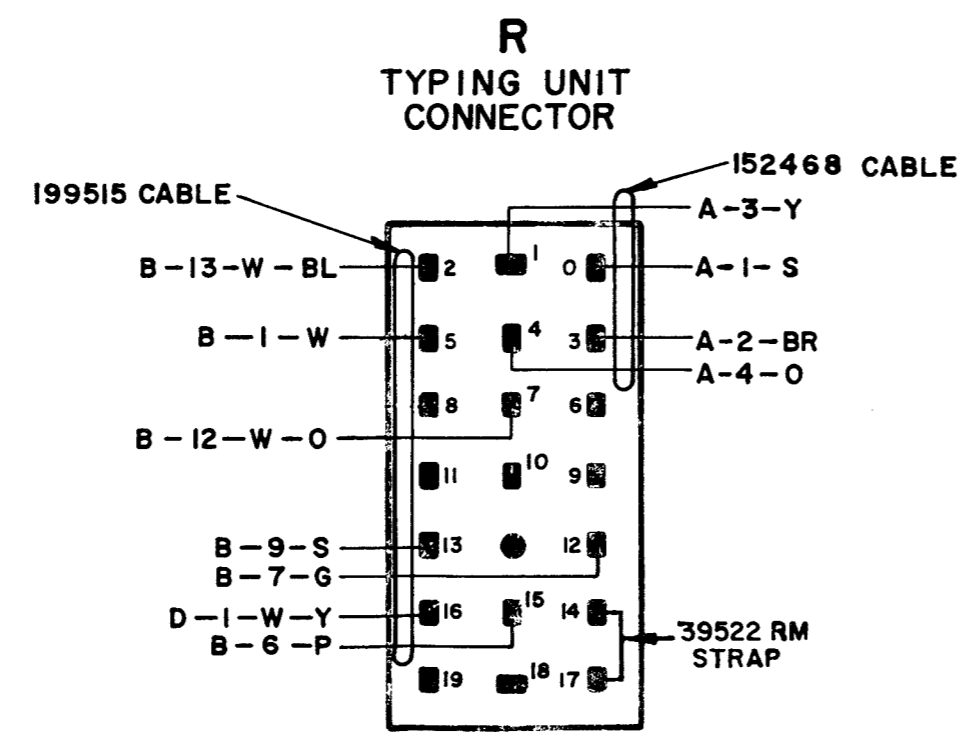
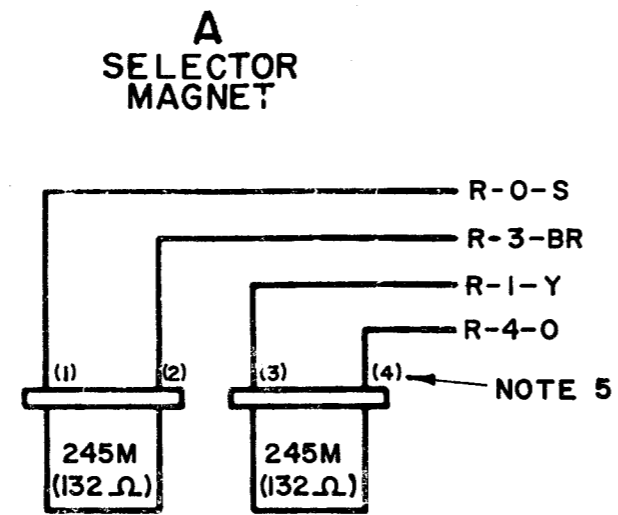
DRAWN: RLW CHKD.
ENGD. DAK APPD.

TELETYPE CORPORATION

6 7020WD

- NO. NOTES
1. WIRING LEGEND:
 2. WIRE COLOR CODE:

W - WHITE	S - SLATE
BK - BLACK	BR - BROWN
O - ORANGE	BL - BLUE
P - PURPLE	G - GREEN
R - RED	Y - YELLOW
 3. CONNECTOR VIEWED FROM SOLDERED TERMINAL END.
 4. COMMON
 5. TERMINAL DESIGNATIONS ENCLOSED IN PARENTHESES ARE NOT MARKED ON COMPONENTS.
 6. 39603RM STRAP, 60019RM SLEEVING (NOT REQUIRED WHEN STRAPPING ADJACENT TERMINALS).
 7. INDICATES SLOT LOCATION.
 8. ASSOCIATED CABLES
152468
199515



7021 WD

REVISIONS		
ISSUE	DATE	AUTH NO.
1	2-24-64	80395
2	4-14-64	81754
3	11-9-64	84168
4	8-13-65	88115
5	4-14-66	90835
6	6-27-66	90553
7	11-25-66	91970

(28AM)

ACTUAL WIRING DIAGRAM
MODEL 28
TYPING UNIT
LP121, 126, 127 & LP137

STUNT BOXES
AJQ,
AJY,
AJZ

APPROVALS

D. ANG. R. E. OF M.

E-NUMBER

PROD. NO. 7021WD

DATE: 10-22-63

PD FILE NO. 11-A25AA

DRAWN RLW CHKD

ENGR. DAK APPD

TELETYPE CORPORATION

7021 WD

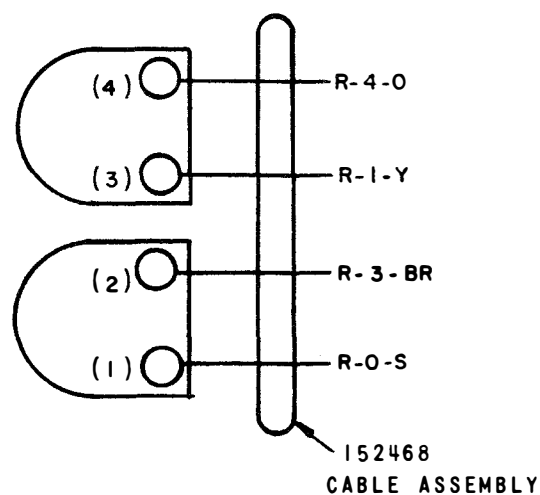
7763 WD

REVISIONS

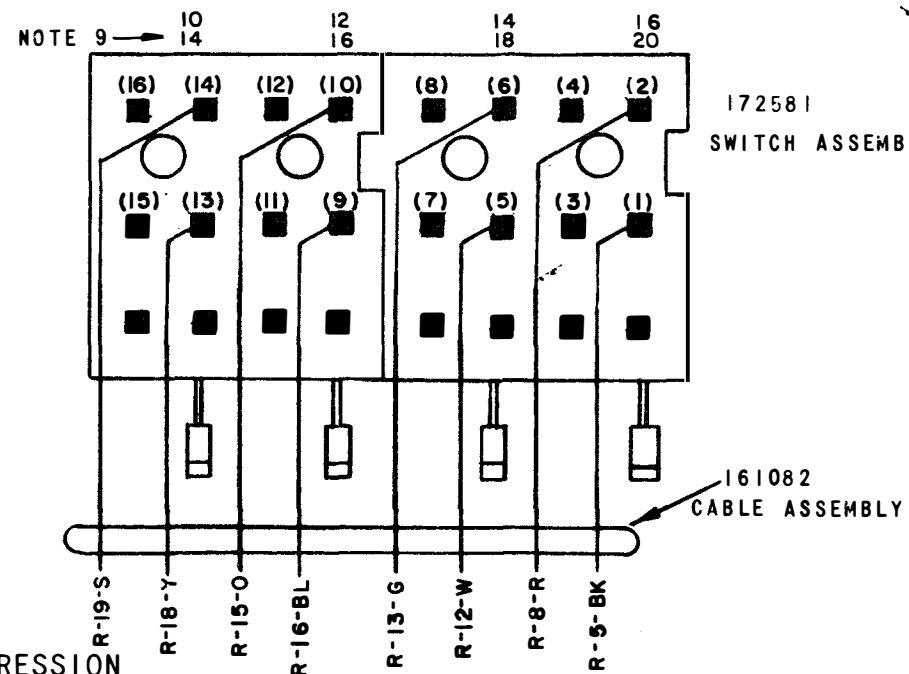
ISSUE	DATE	AUTH. NO.
	4-23-65	16768-R
-2	9-9-65	87339
3	4-13-66	90373

N.O.	NOTES										
1.	<p>LEGEND:</p> <p>A-I-W-BK WIRE COLOR CODE</p>										
2.	<p>COLOR CODE:</p> <table border="0"> <tr> <td>R-RED</td> <td>S-SLATE</td> </tr> <tr> <td>BL-BLUE</td> <td>BK-BLACK</td> </tr> <tr> <td>Y-YELLOW</td> <td>G-GREEN</td> </tr> <tr> <td>O-ORANGE</td> <td>P-PURPLE</td> </tr> <tr> <td>BR-BROWN</td> <td>W-WHITE</td> </tr> </table>	R-RED	S-SLATE	BL-BLUE	BK-BLACK	Y-YELLOW	G-GREEN	O-ORANGE	P-PURPLE	BR-BROWN	W-WHITE
R-RED	S-SLATE										
BL-BLUE	BK-BLACK										
Y-YELLOW	G-GREEN										
O-ORANGE	P-PURPLE										
BR-BROWN	W-WHITE										
3.	CONNECTOR VIEWED FROM SOLDER TERMINAL END.										
4.	<p>STUNT BOX:</p> <p>CONTACT ARM FAR CONTACT (F) SLOT NO.</p> <p>STRAIGHT F NORMALLY CLOSED CROOKED F NORMALLY OPEN</p>										
5.	TERMINAL DESIGNATIONS ENCLOSED IN PARENTHESES ARE FOR REFERENCE AND ARE NOT MARKED ON COMPONENTS.										
6.	<p>ASSOCIATED CABLES:</p> <p>152468 CABLE ASSEMBLY 158318 CABLE ASSEMBLY 161082 CABLE ASSEMBLY 199816 CABLE ASSEMBLY 164477 CABLE ASSEMBLY-LPI33 ONLY</p>										
7.	CONTACTS VIEWED FROM SOLDER TERMINAL ENDS.										
8.	CONTACTS SHOWN IN UNOPERATED OR DE-ENERGIZED POSITION.										
9.	INDICATES SLOT POSITION, TOP FIGURES FOR LPI33 AKA LOWER FIGURES FOR LPI29AUH										
10.	FOR ASSOCIATED SCHEMATIC SEE 7762WD.										
11.											
12.	AREA P AND WIRING TO CONNECTOR R PRESENT ON LPI33 ONLY.										

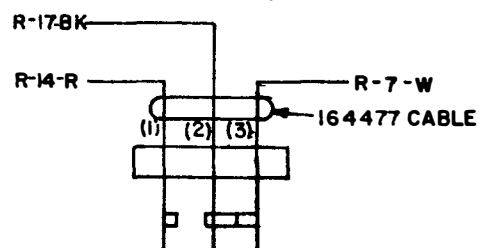
B
SELECTOR
MAGNETS



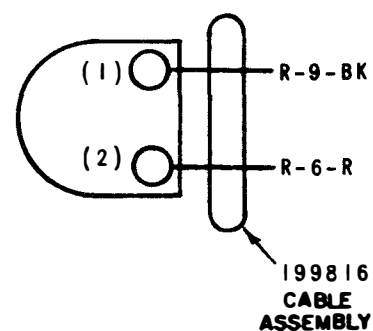
D
STUNT BOX
CONTACTS



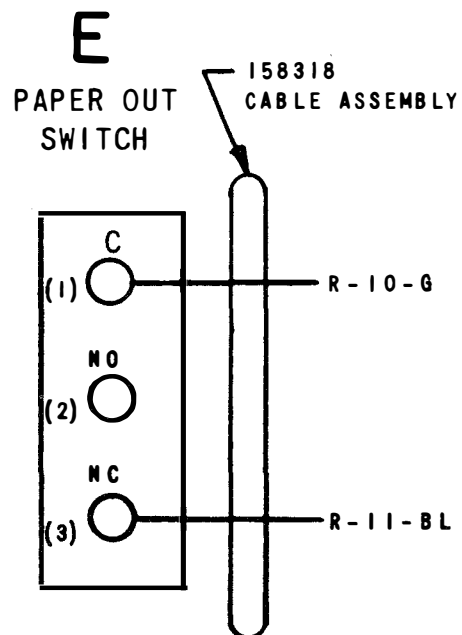
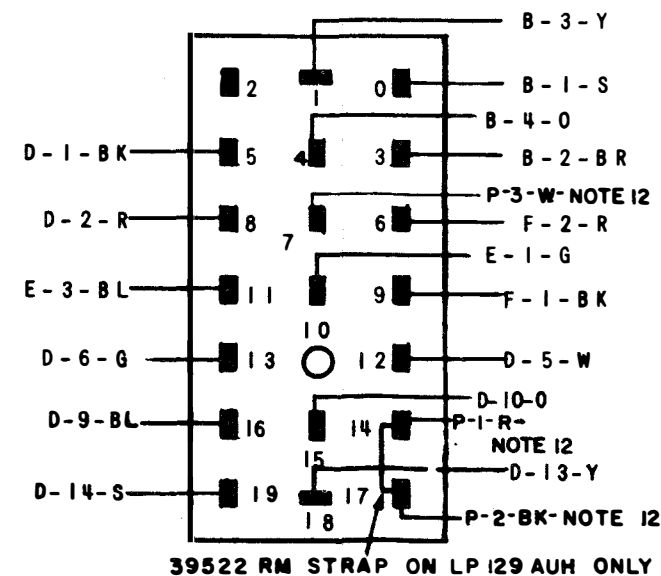
P
HOR. TAB. CONTACTS
164478
NOTE 12.



F
PRINT SUPPRESSION
MAGNET



R
TYPING UNIT CONNECTOR
(PLUG)



ACTUAL
WIRING DIAGRAM
FOR
MODEL 28
TYPING UNITS
LPI29/AUH
LPI33 AKA

APPROVALS

D AND R: *[Signature]*
E OF M: *[Signature]*

E-NUMBER

PROD. NO. 7763WD

DATE: 2-17-65

P.D. FILE NO. 26-58.65AA

DRAWN: DDG
CHKD: *[Signature]*
ENGR. RE: *[Signature]*
APPRO: *[Signature]*

TELETYPE
CORPORATION

3 7763 WD