

28 and 35 MULTI-MAGNET NON-TYPING REPERFORATOR (LARP)

PARTS

Figure	Contents	Page
1	Rear Plate and punch Block Assemblies	2
2	Punch Front Plate	3
3	Punch Bail Mechanism	4
4	Verifier Contact Mechanism	5
5	Verifier Contact Mechanism	6
6	Verifier Contact Mechanism	7
7	Verifier Contact Mechanism	8
8	Code Selector Mechanism	9
9	Rocker Bail Mechanism	10
10	Main Shafts	11
11	Main Plate	12
12	Magnet Release Contact Mechanism	13
13	Tape Feed-Out Mechanism	14
14	Clutch Trip Mechanism	15
15	Reperforator Main Frame (Miniaturized Unit)	16
16	Code Selector Mechanism (Miniaturized)	17
17	Auxiliary Contact Assemblies	18
18	178697 Modification Kit to add Power Backspace Mechanism	19
19	178697 Modification Kit to add Power Backspace Mechanism	20
20	194143 Code Magnet Selector Assembly	21
21	Gear Chart	22
	Numerical Index	23

NOTE:

When ordering parts from this section,  
prefix each number with the letters TP.

Description	Teletype Code	Bell System Code
Gear Set	144993	28LB

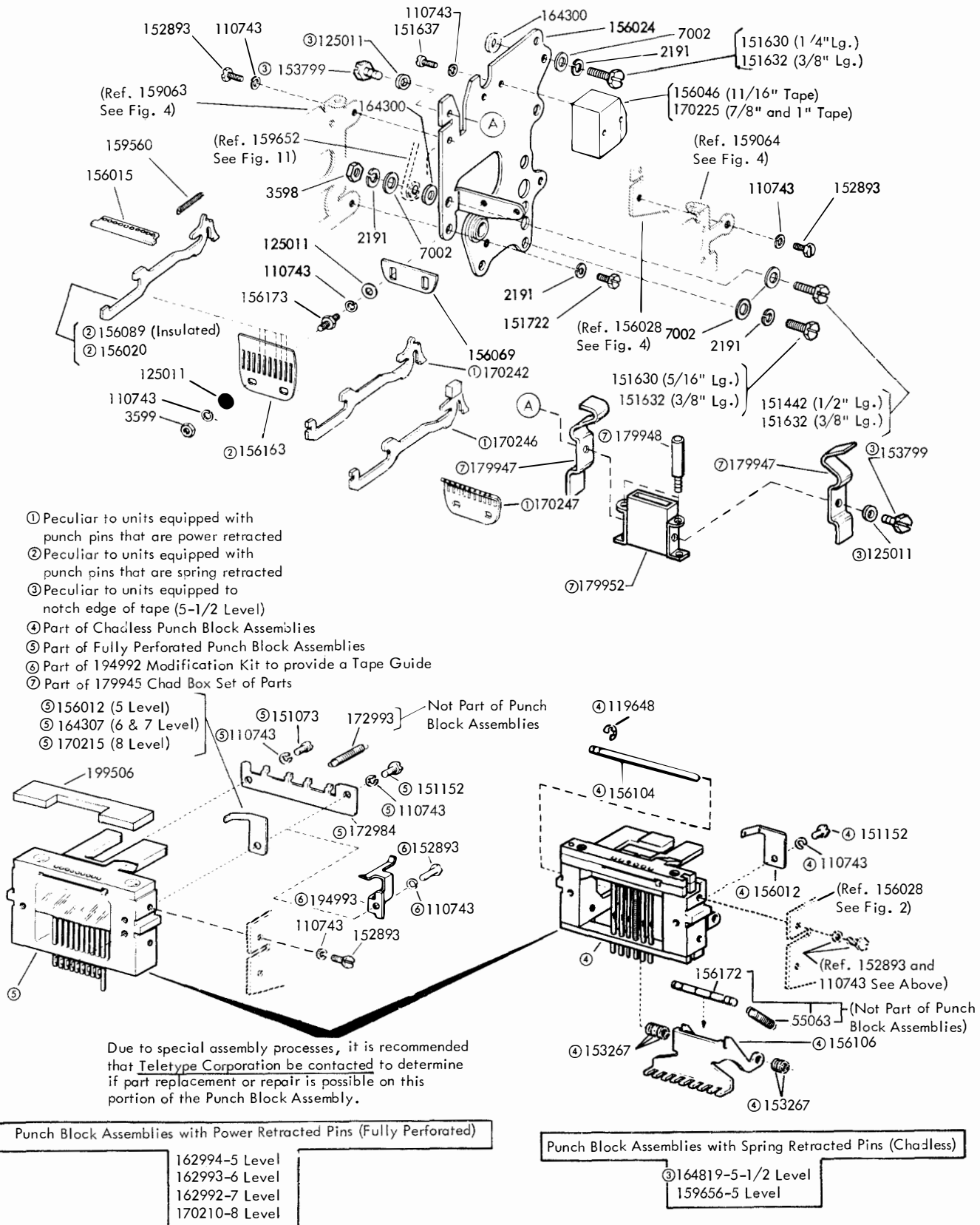


FIGURE 1. REAR PLATE AND PUNCH BLOCK ASSEMBLIES

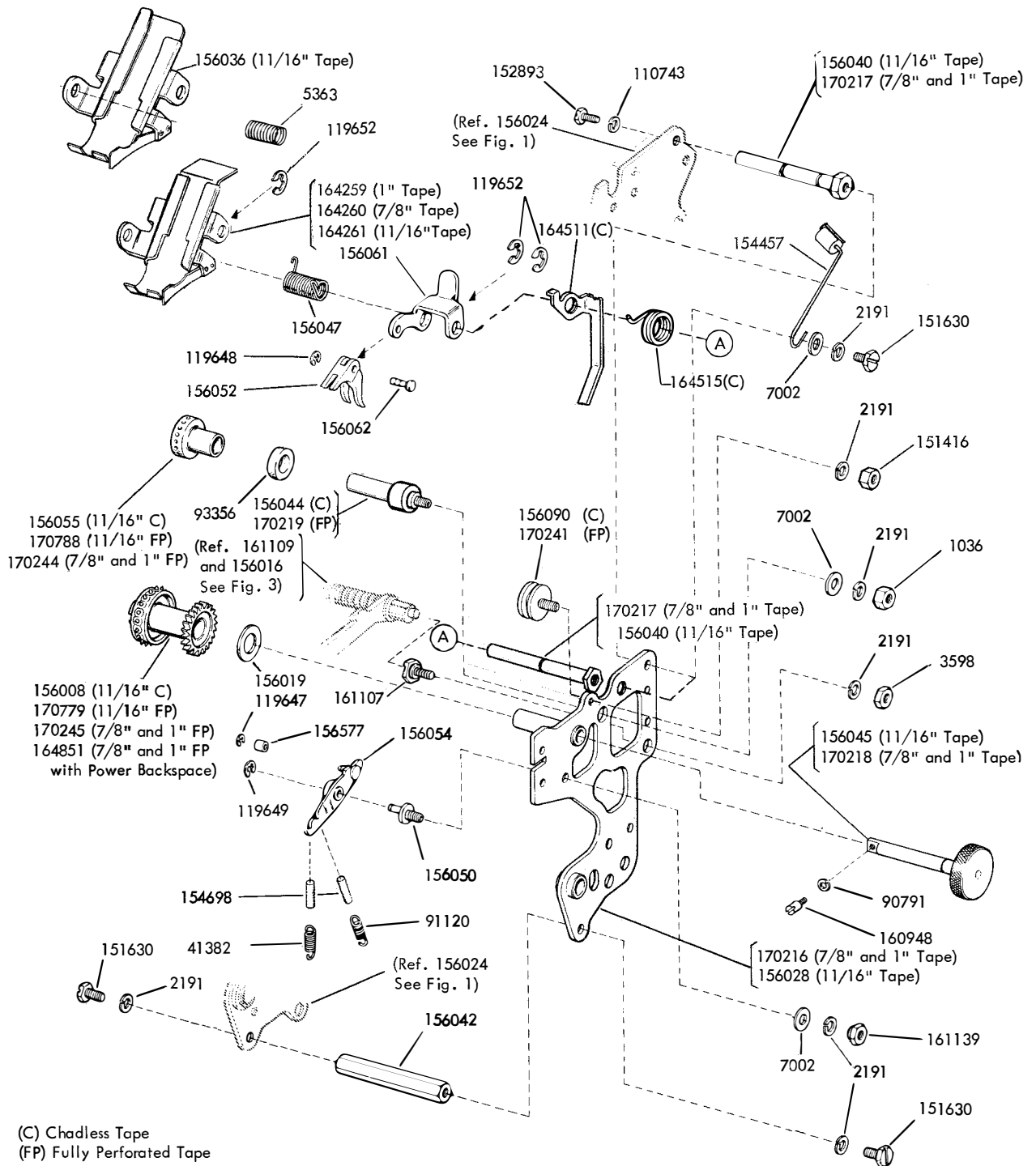


FIGURE 2. PUNCH FRONT PLATE

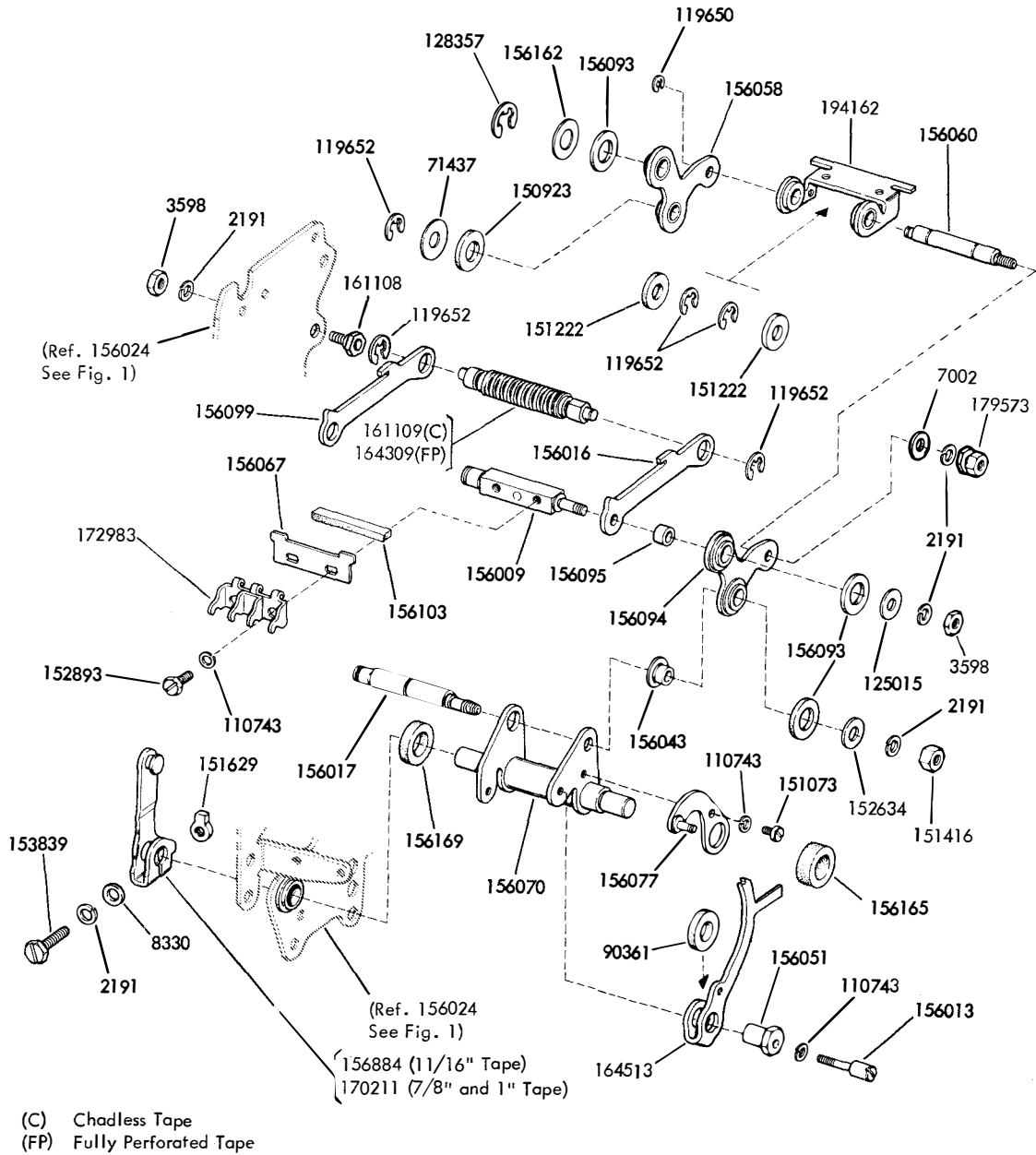
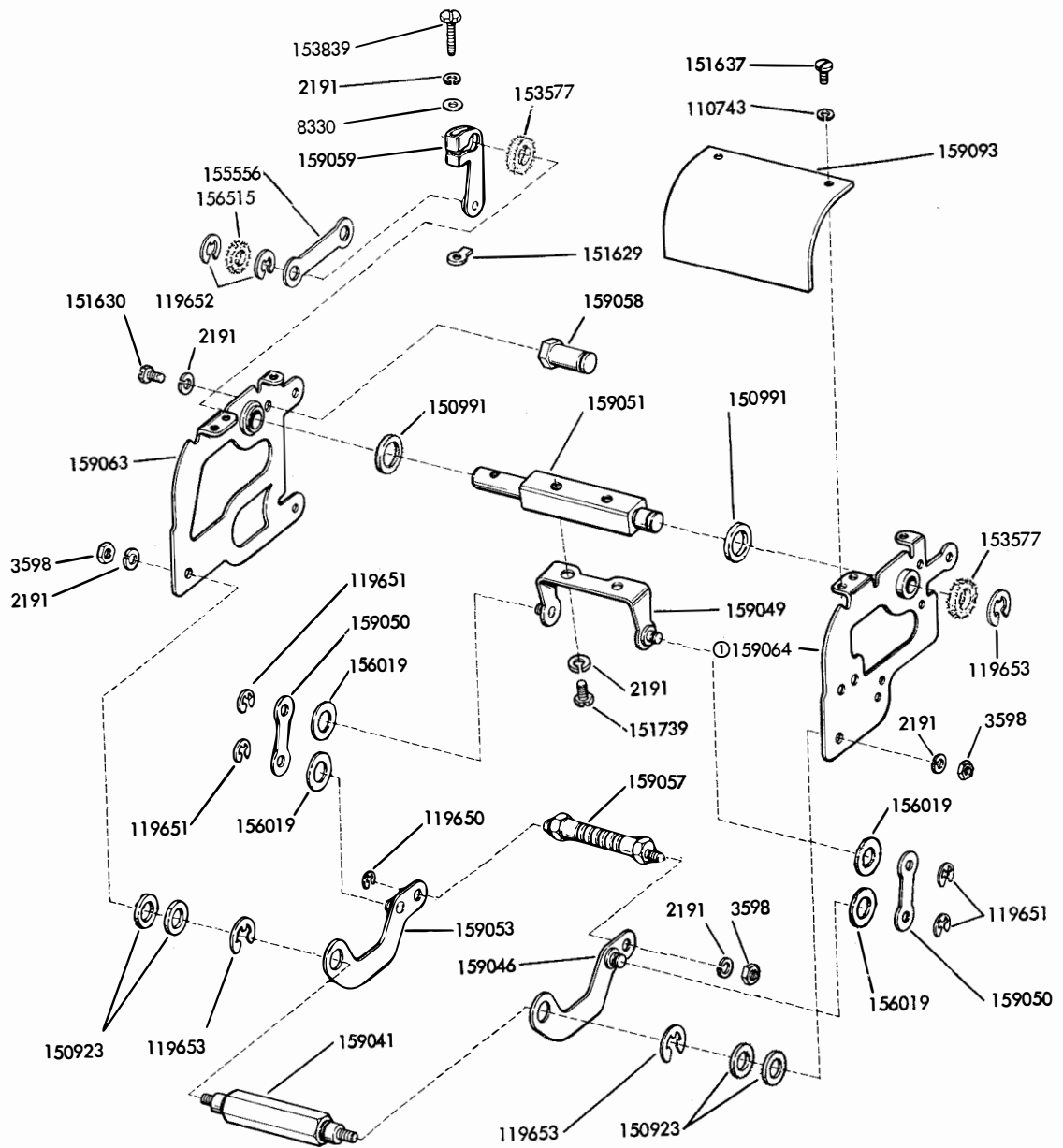


FIGURE 3. PUNCH BAIL MECHANISM



⓪ Peculiar to units equipped with contacts to verify six characters after perforation. See Figure 7 for parts peculiar to units with contacts to verify one character after perforation.

FIGURE 4. VERIFIER CONTACT MECHANISM

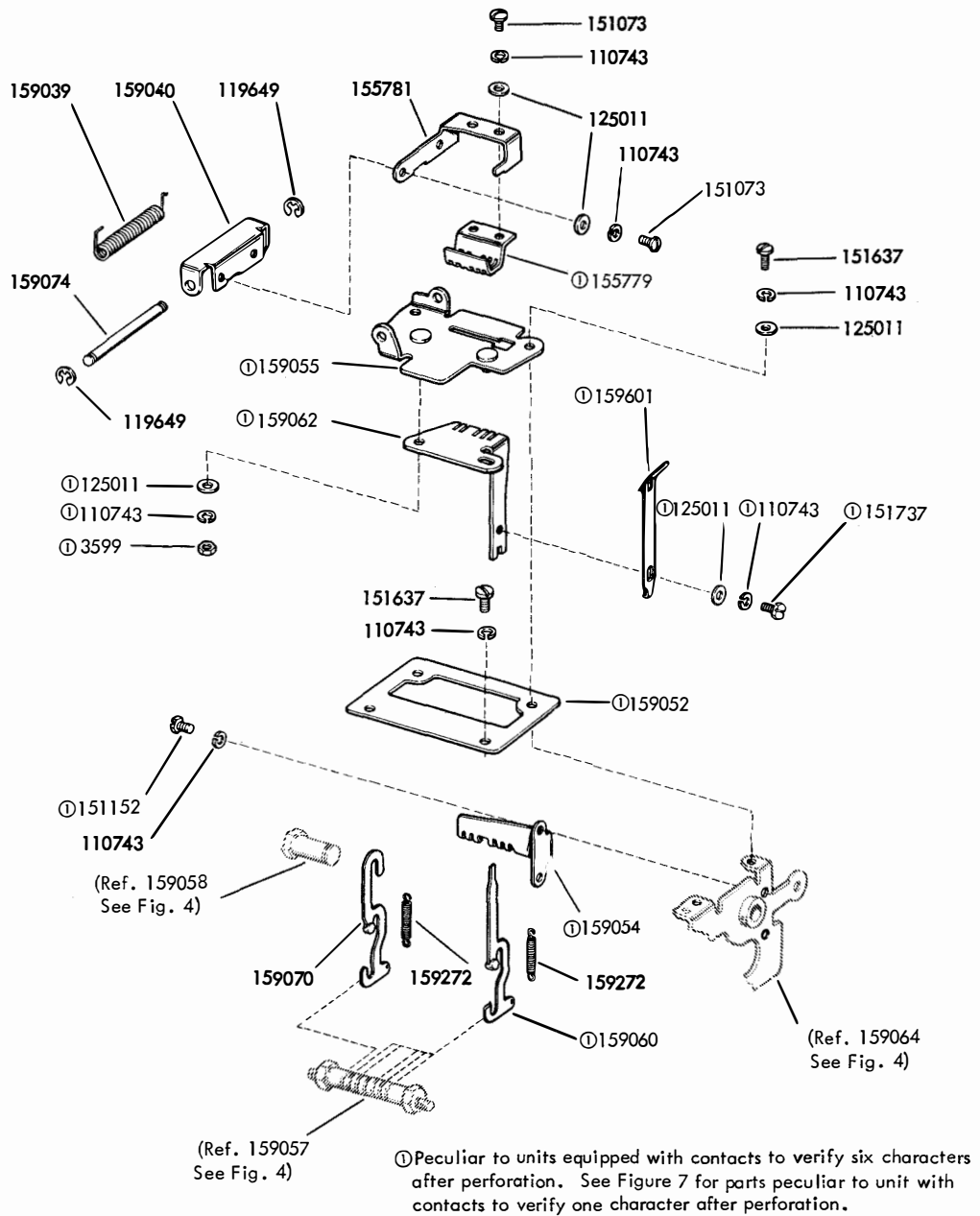
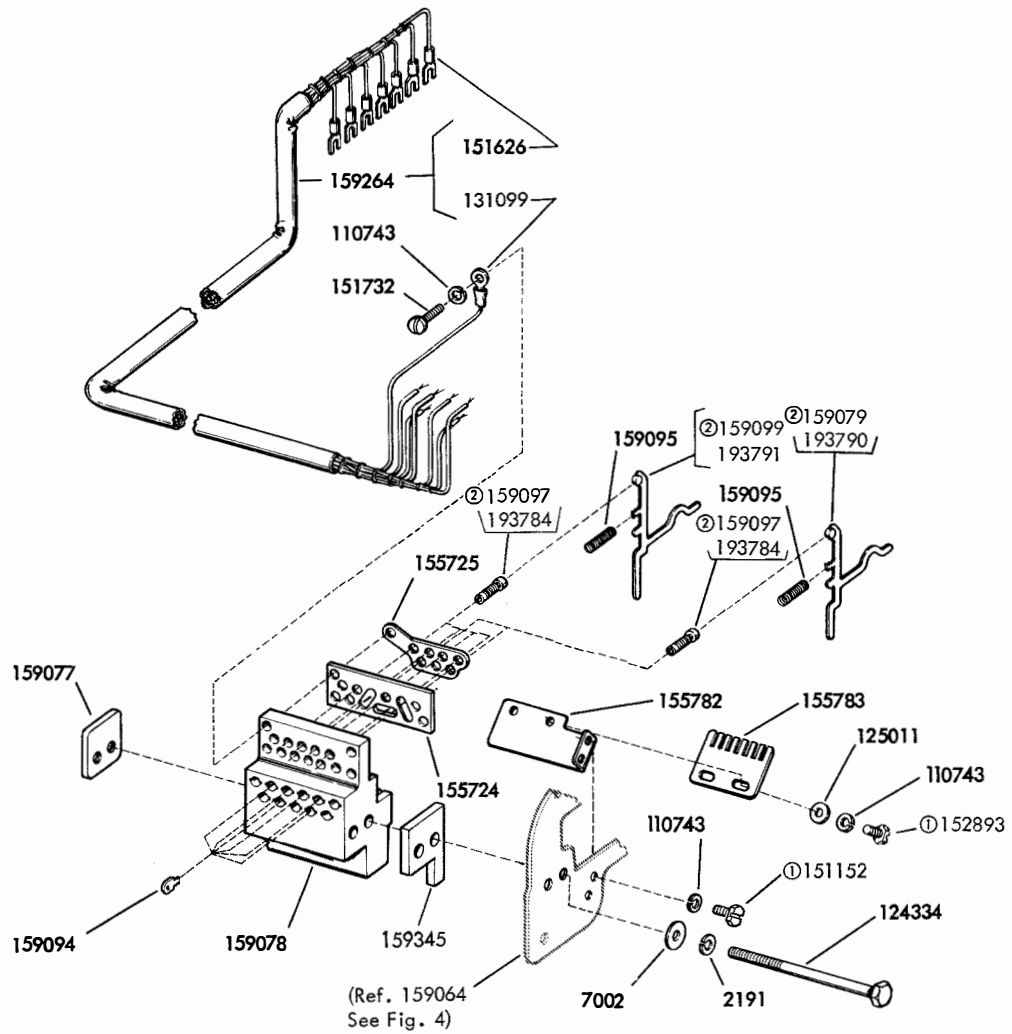


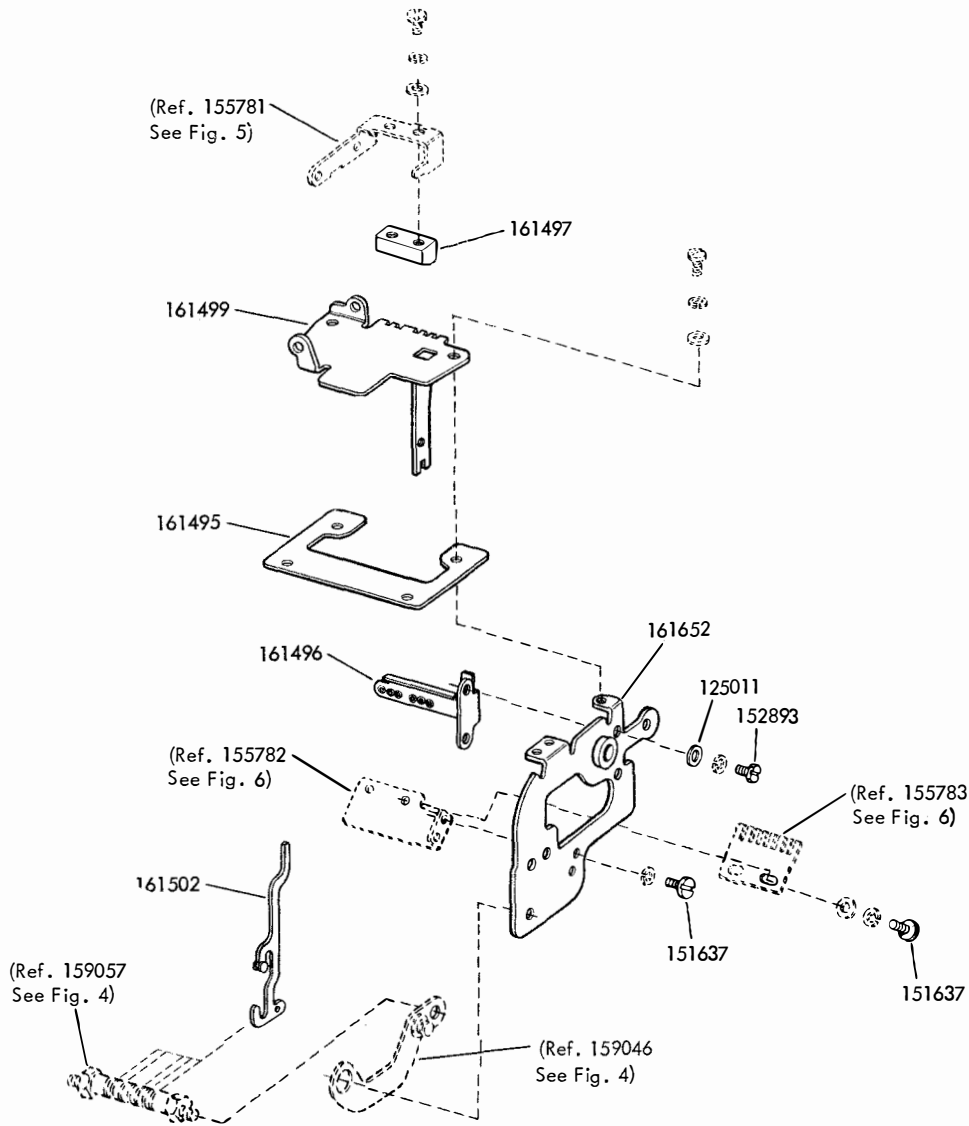
FIGURE 5. VERIFIER CONTACT MECHANISM



① Peculiar to units equipped with contacts to verify six characters after perforation. See Figure 7 for parts peculiar to units with contacts to verify one character after perforation.

② Early Design

FIGURE 6. VERIFIER CONTACT MECHANISM



Note: All parts shown on this page are peculiar to units equipped with contacts to verify one character after perforation.

FIGURE 7. VERIFIER CONTACT MECHANISM



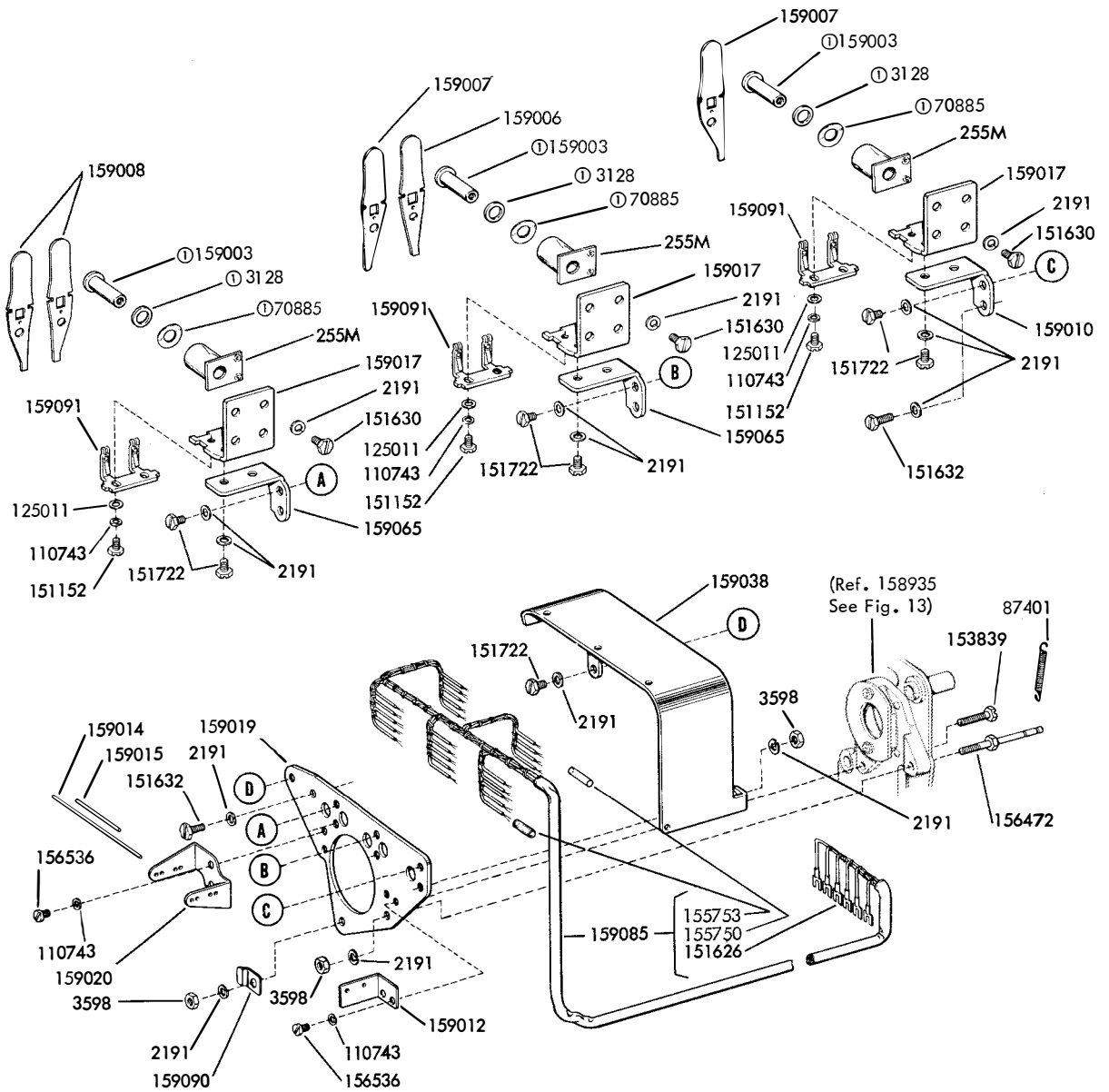


FIGURE 8. CODE SELECTOR MECHANISM

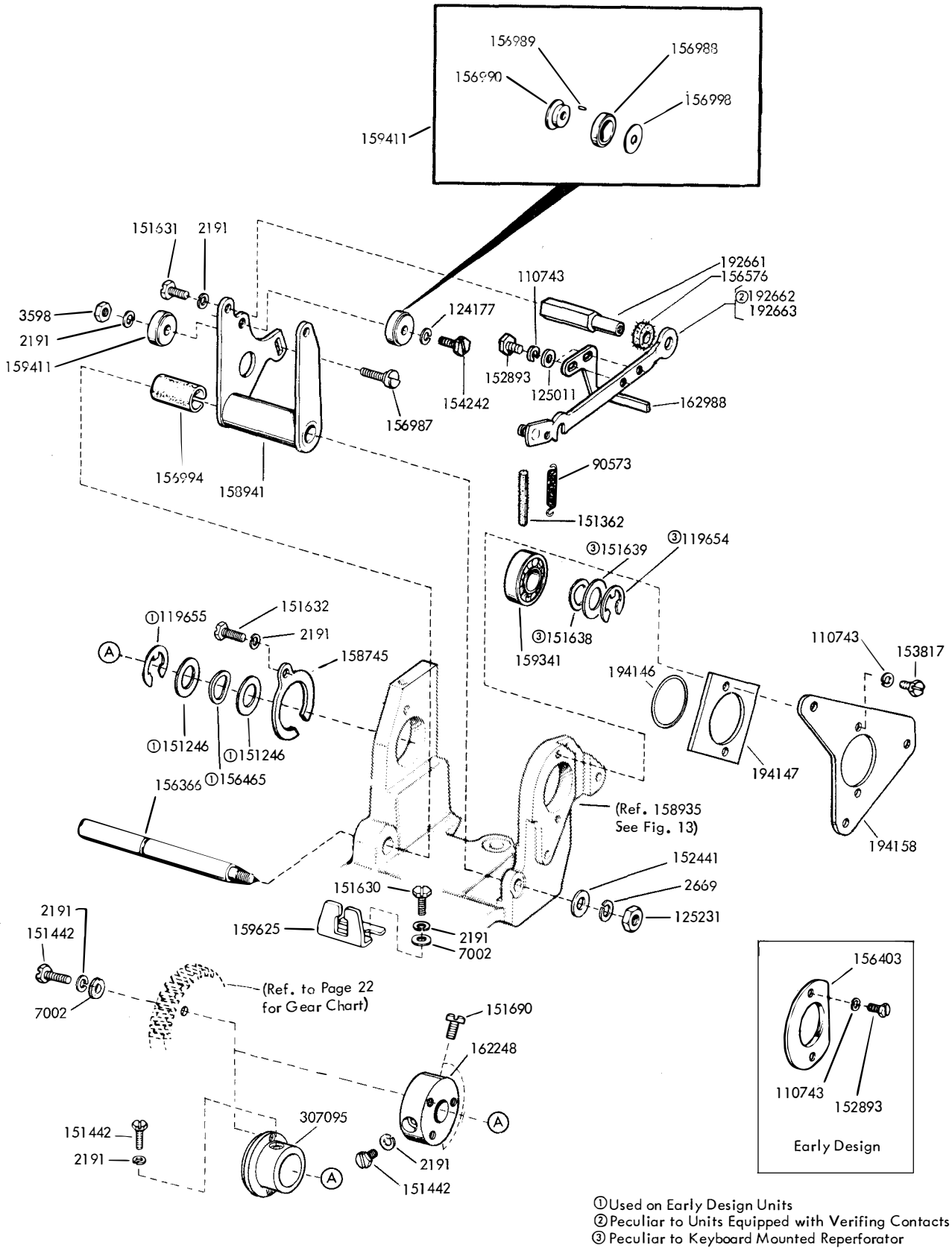
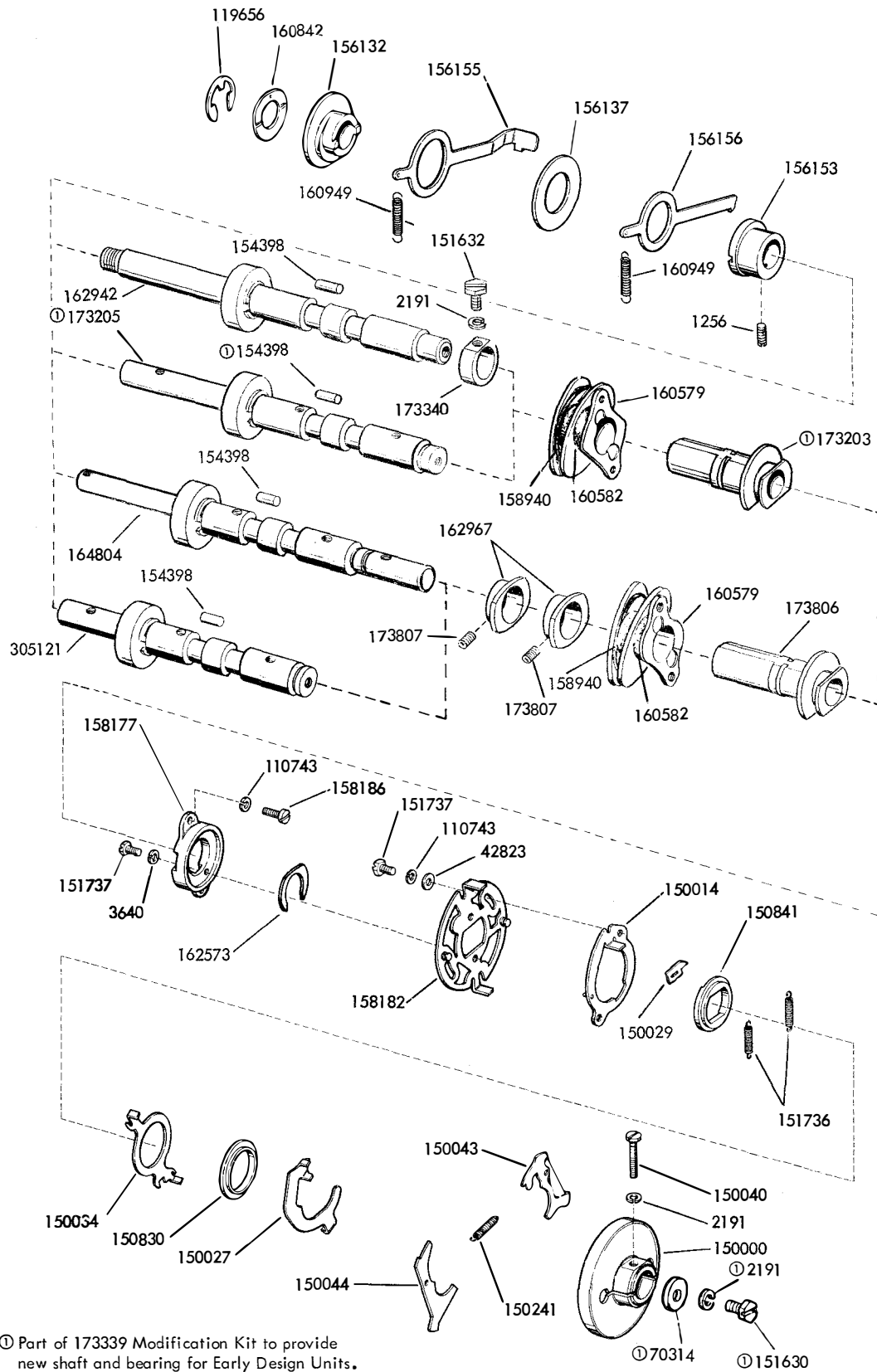


FIGURE 9. ROCKER BAIL MECHANISM



Ⓞ Part of 173339 Modification Kit to provide new shaft and bearing for Early Design Units.

FIGURE 10. MAIN SHAFTS

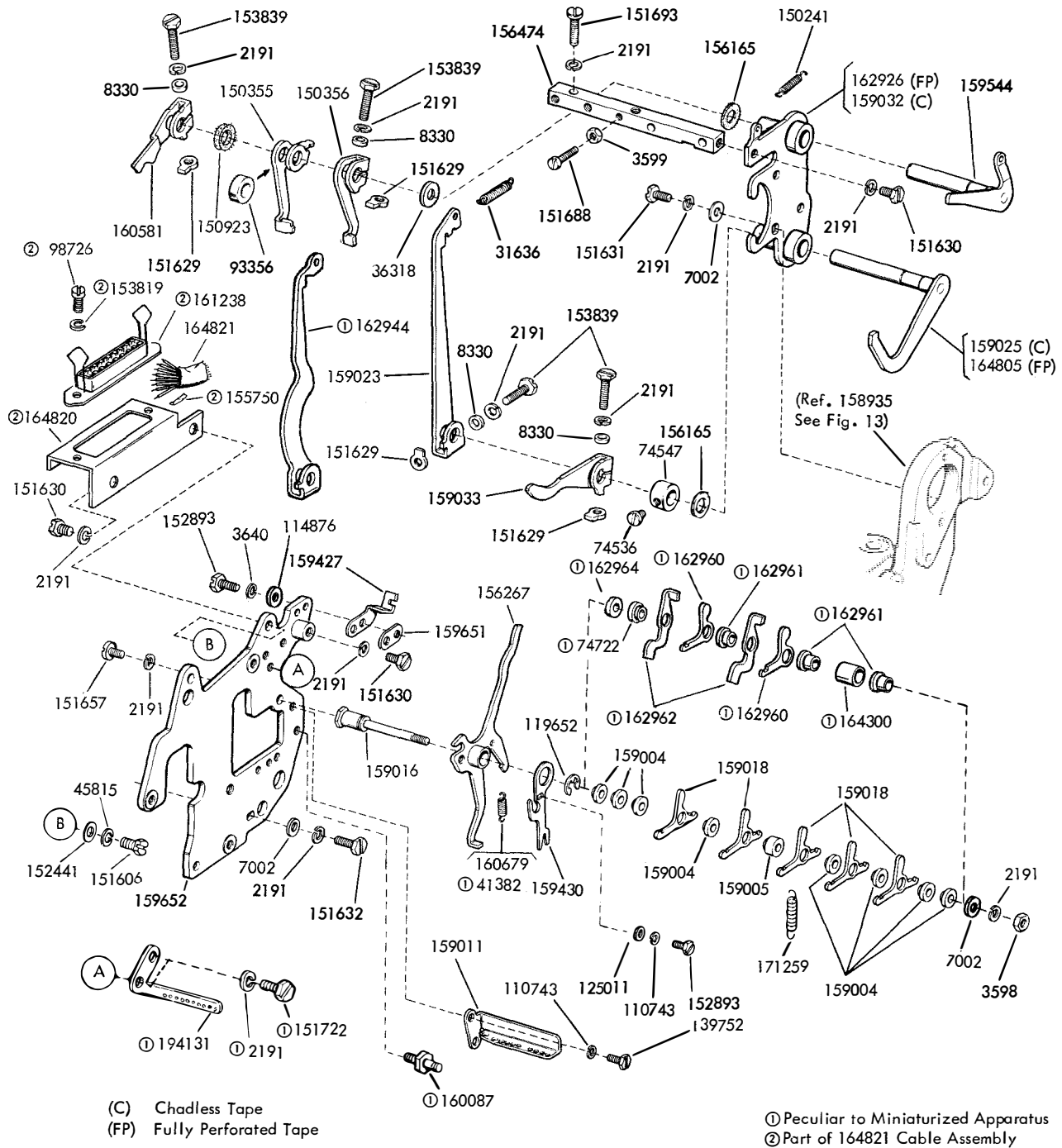


FIGURE 11. MAIN PLATE

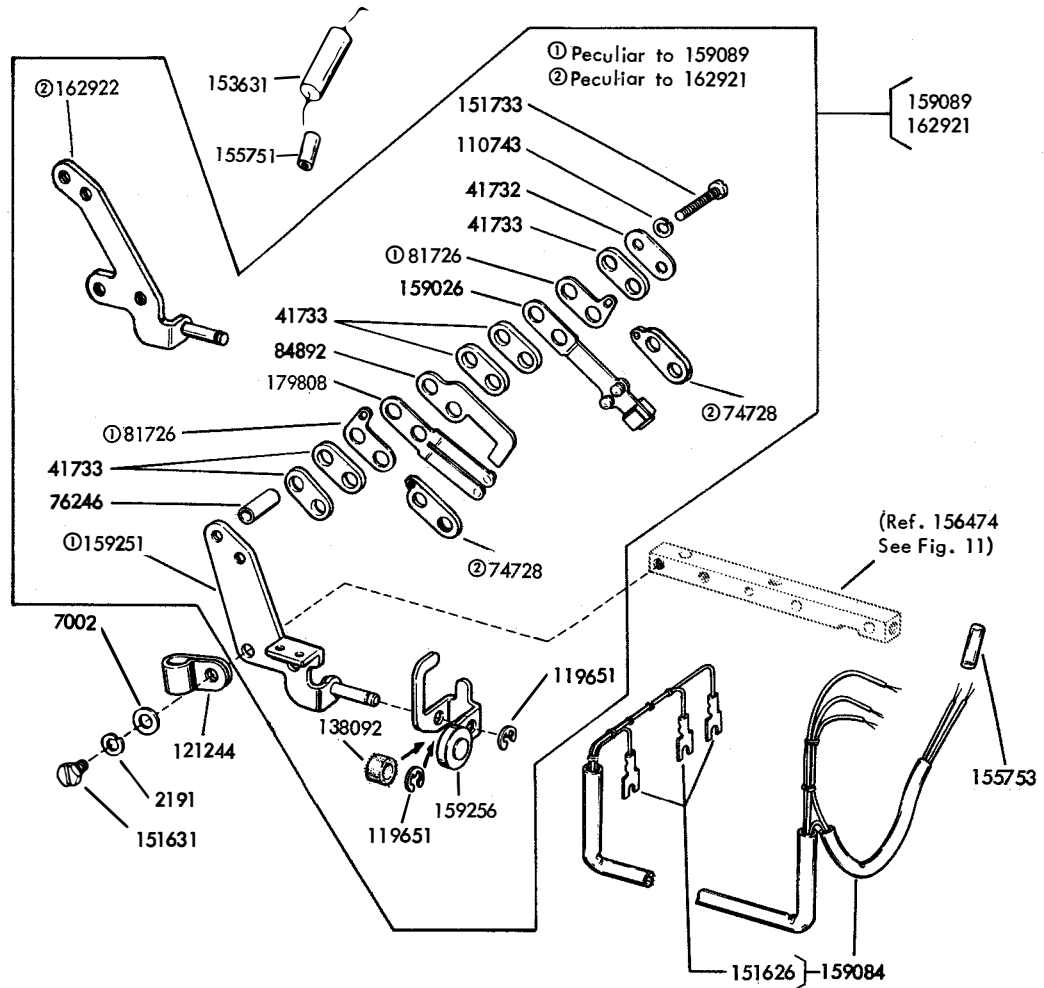


FIGURE 12. MAGNET RELEASE CONTACT MECHANISM

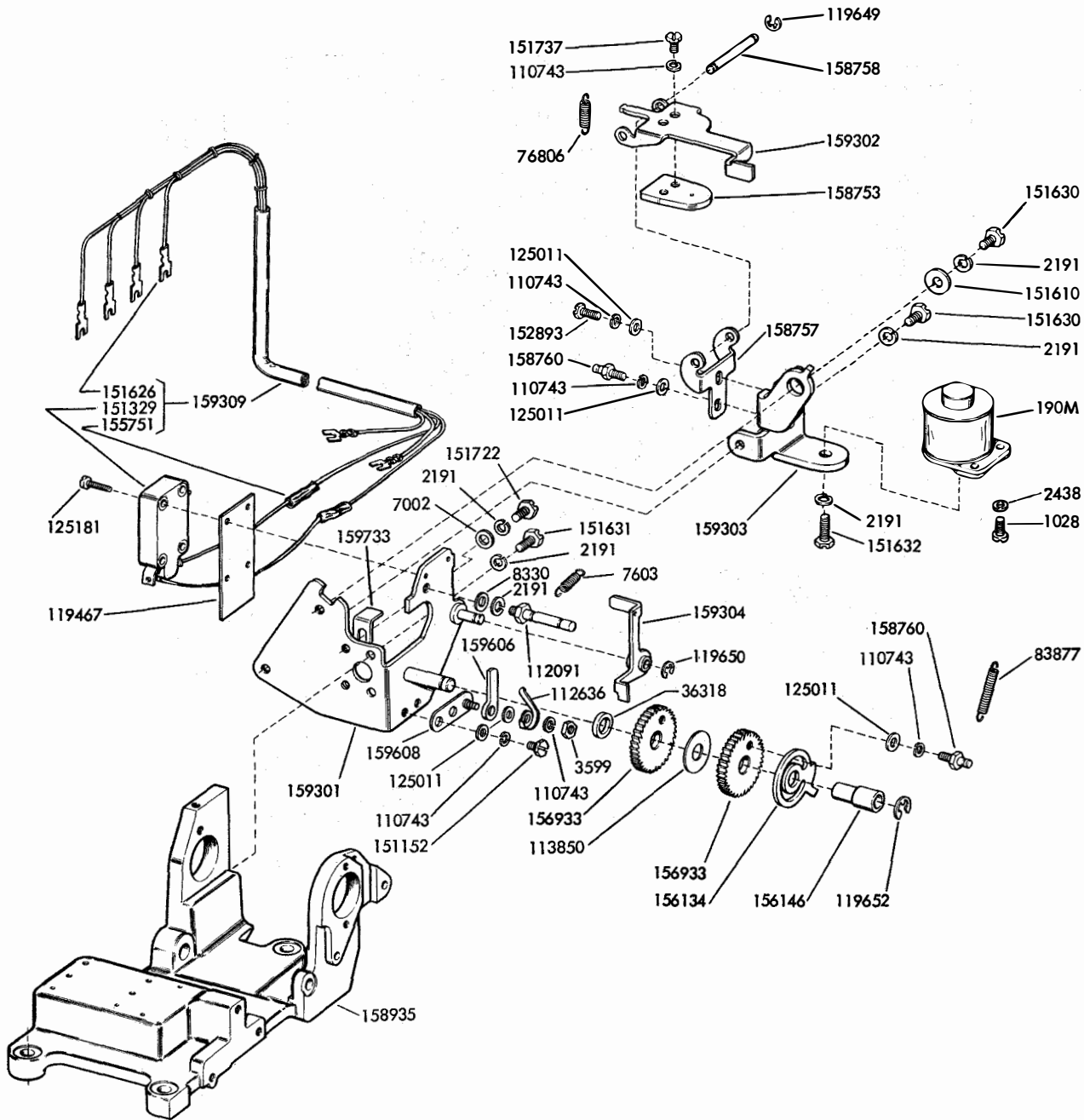


FIGURE 13. TAPE FEED-OUT MECHANISM

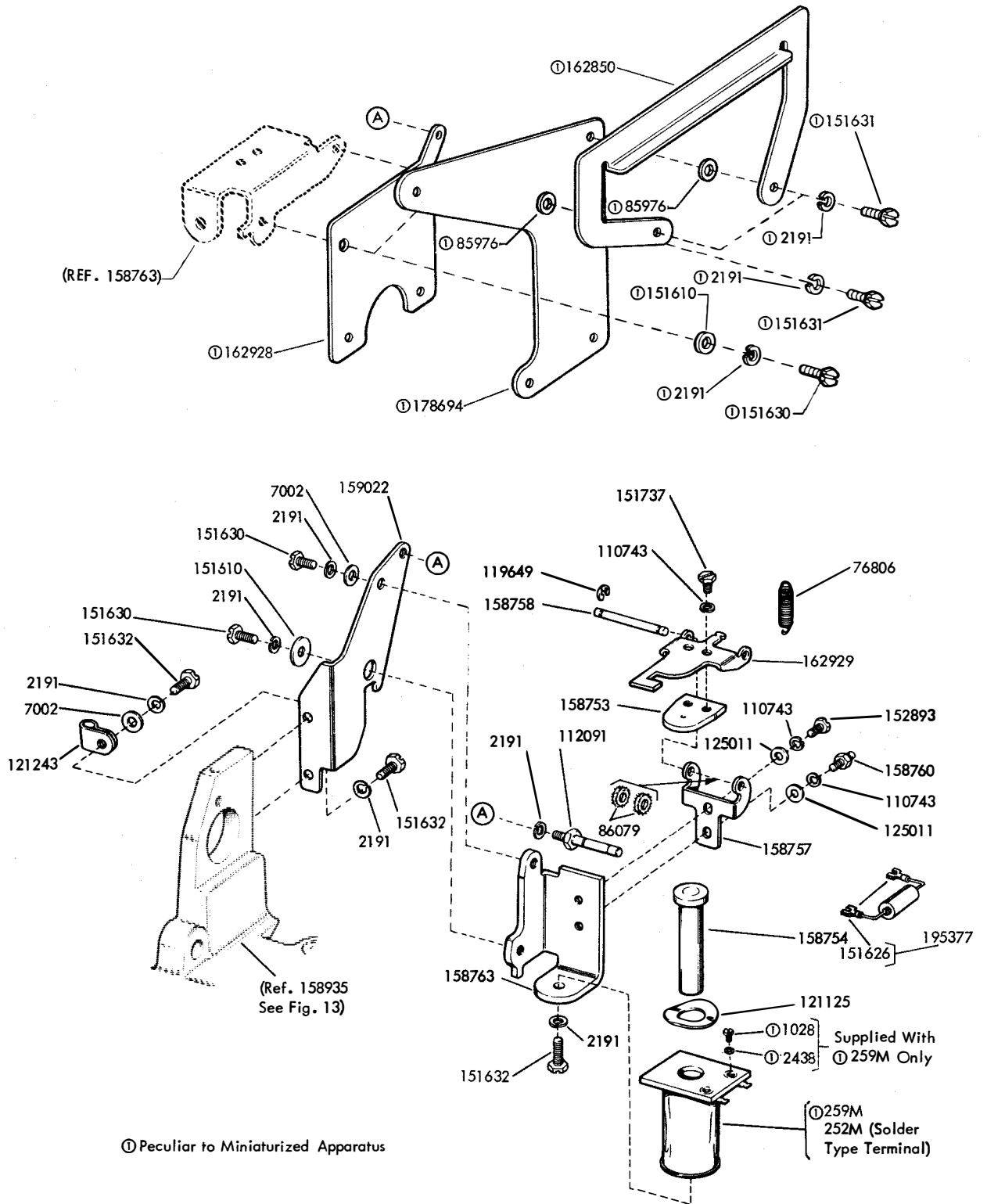


FIGURE 14. CLUTCH TRIP MECHANISM

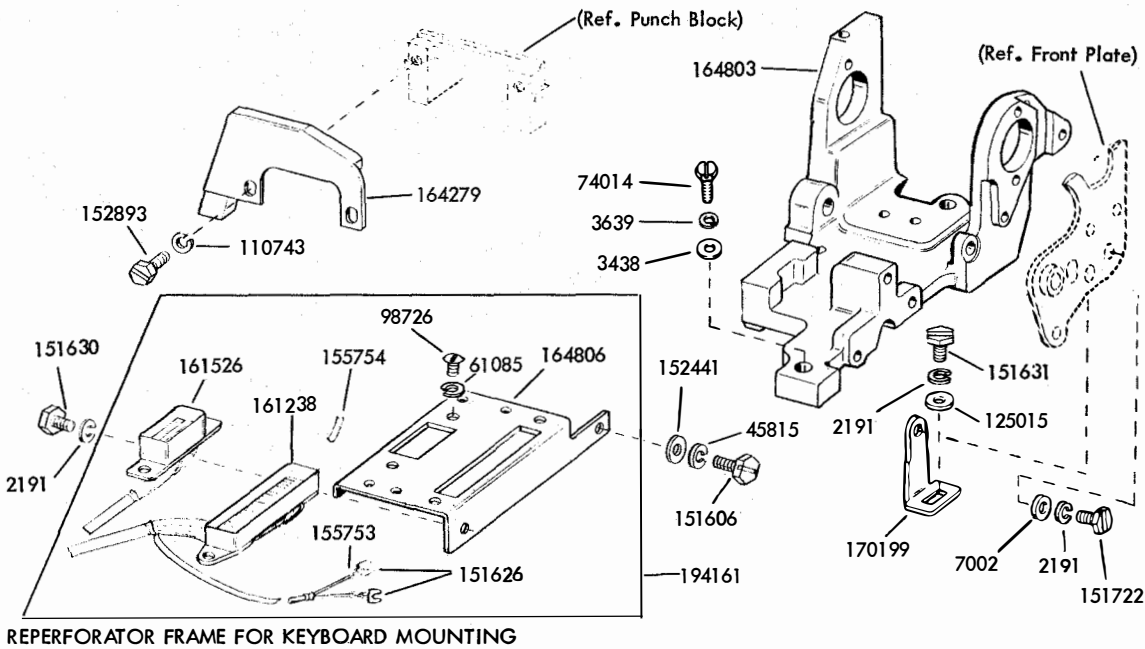
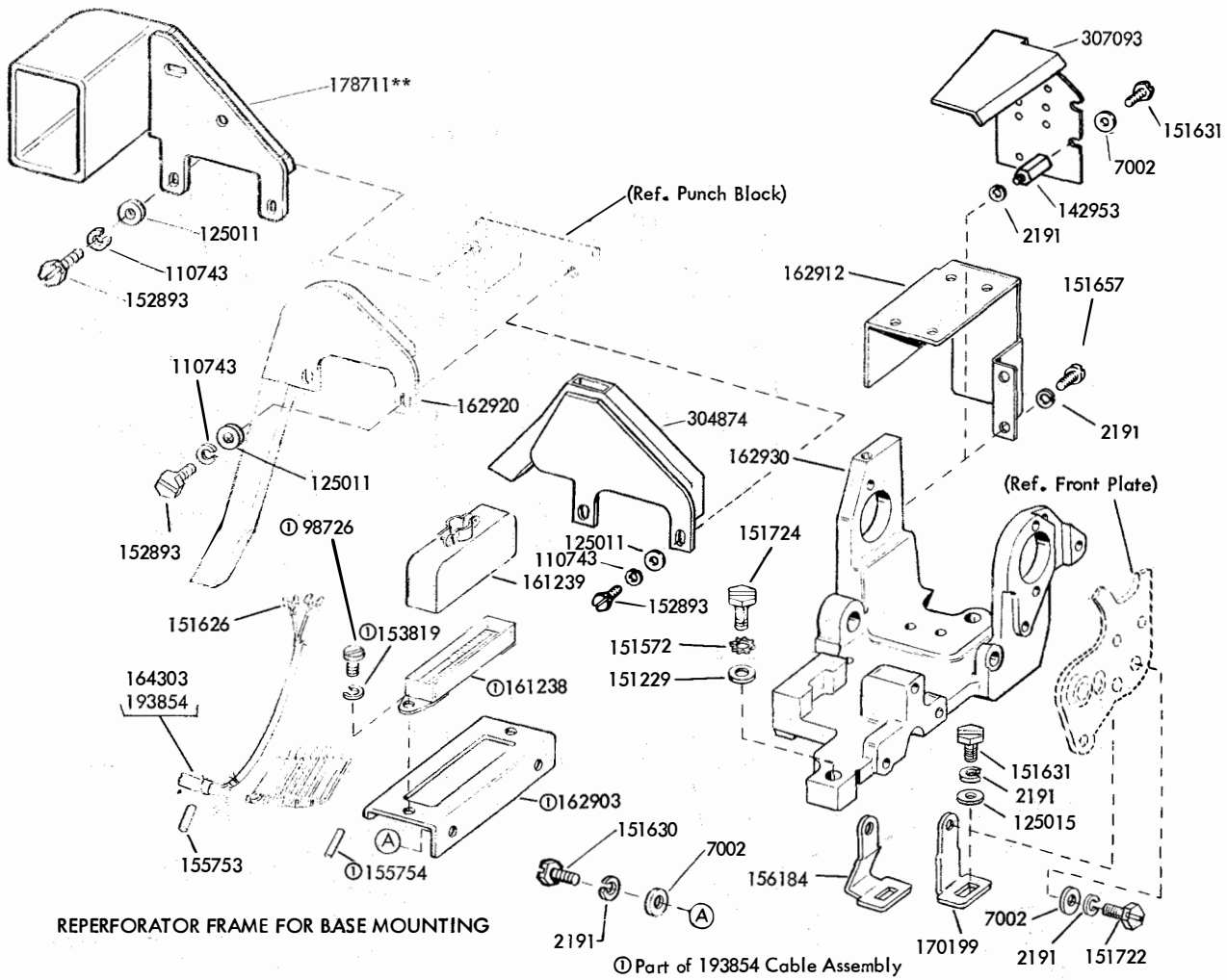


FIGURE 15. REPERFORATOR MAIN FRAME (MINIATURIZED UNIT)



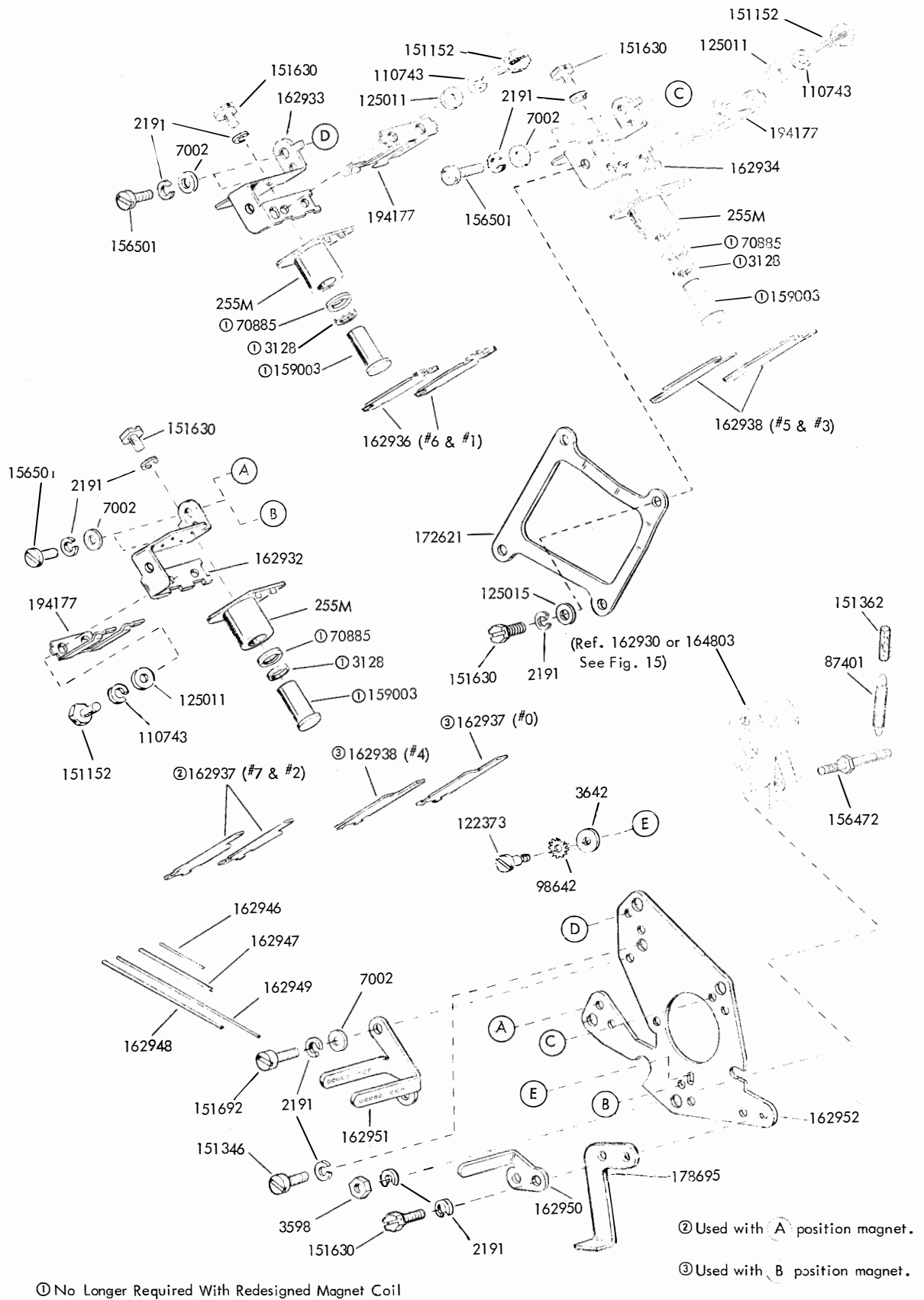


FIGURE 16. CODE SELECTOR MECHANISM (MINIATURIZED)

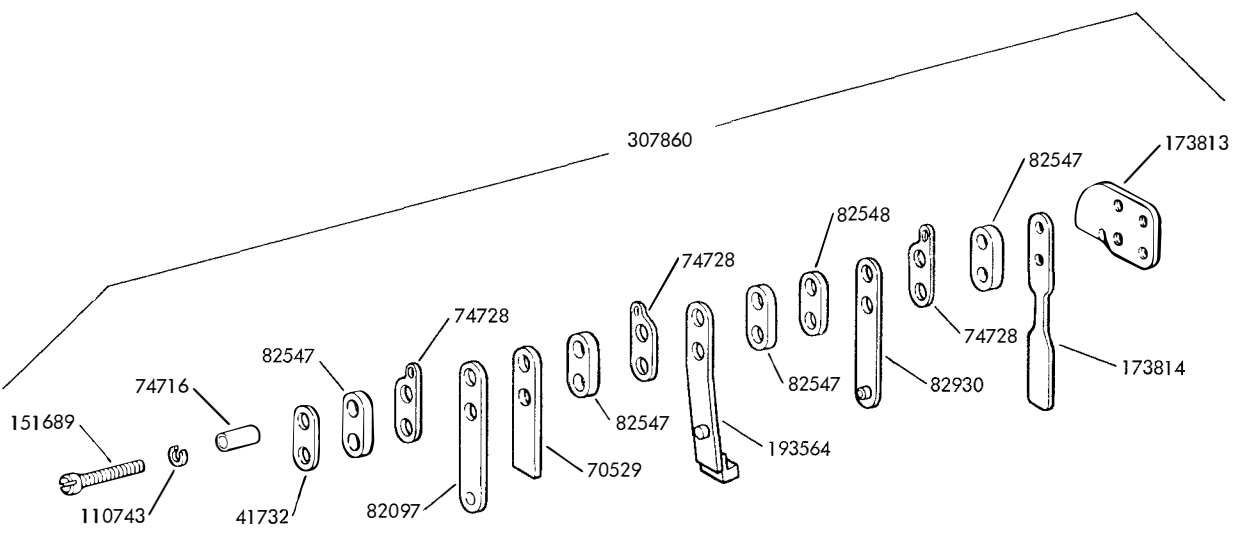
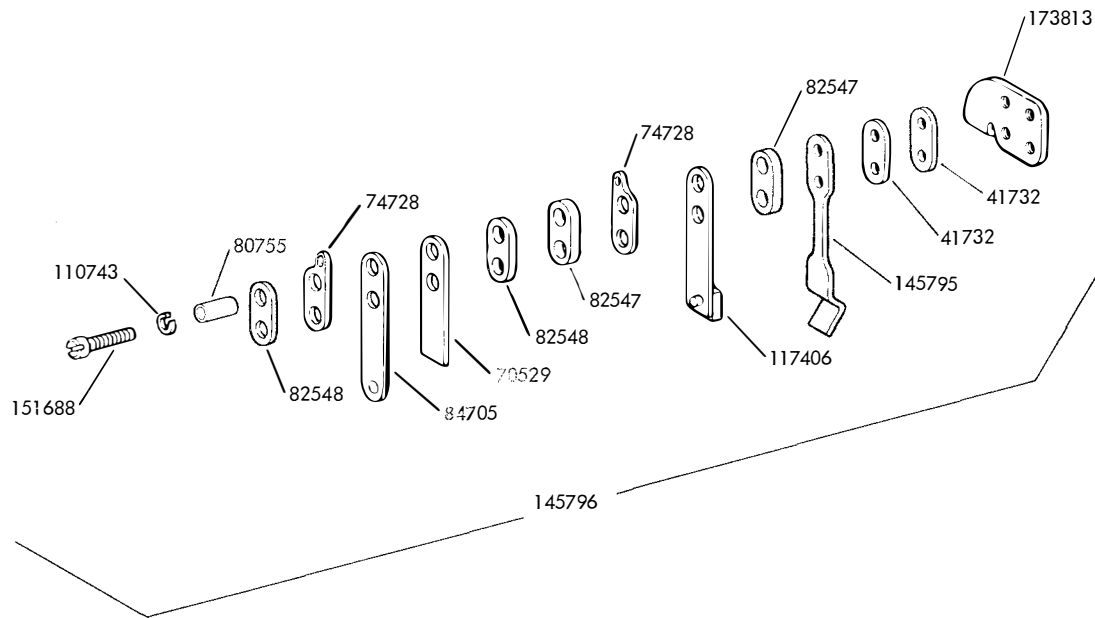
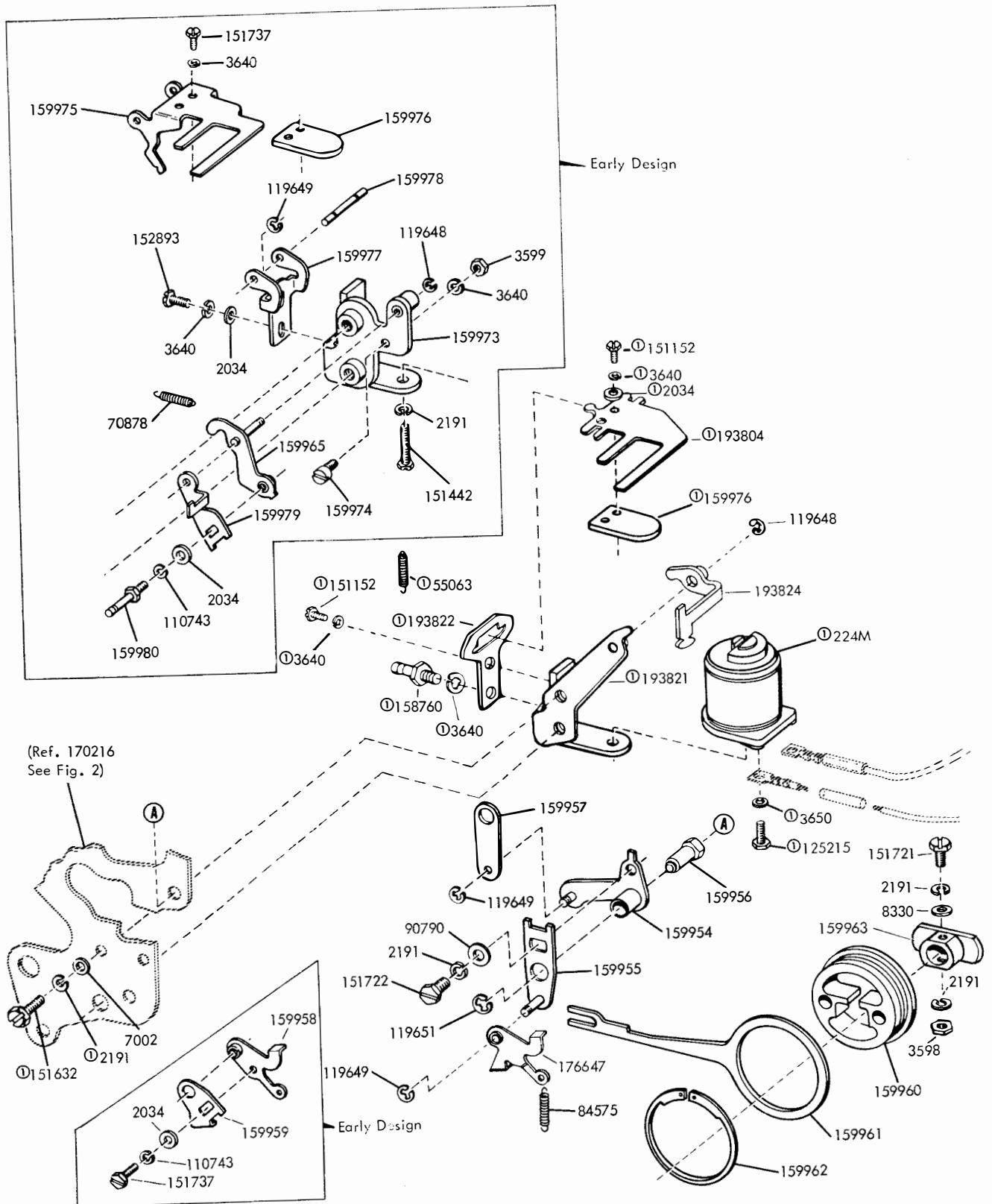
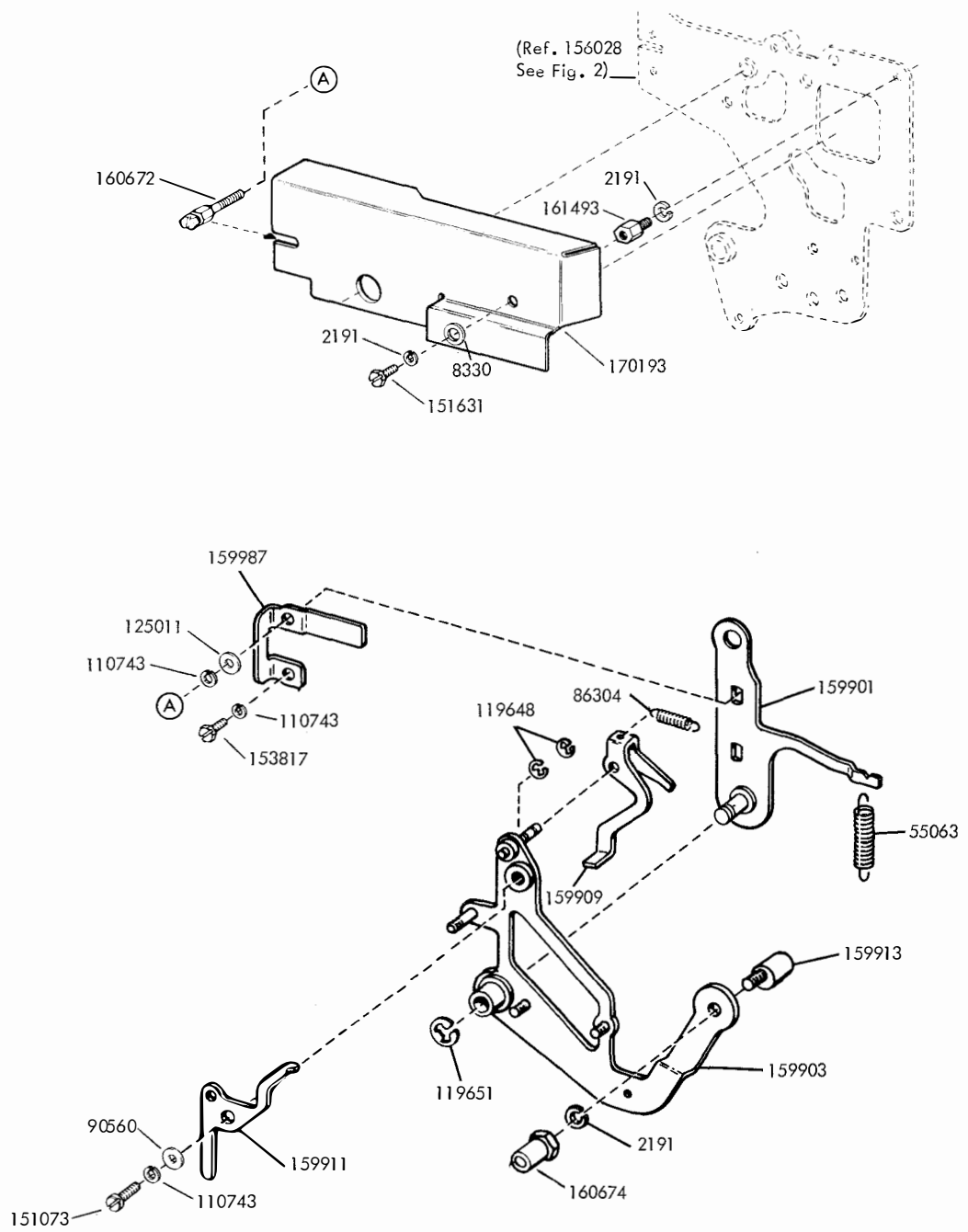


FIGURE 17. AUXILIARY CONTACT ASSEMBLIES



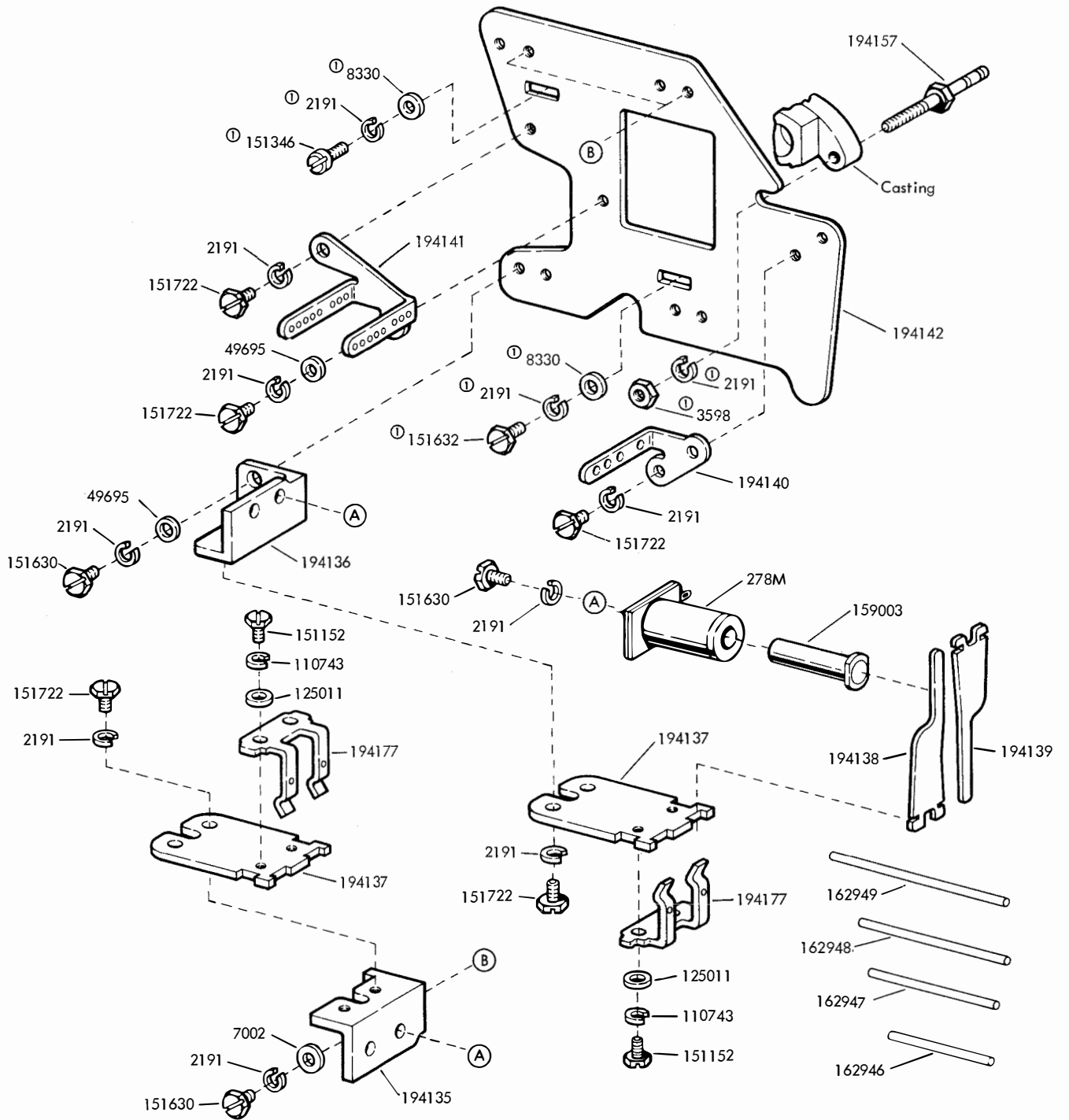
ⓐ Part of 193825 Backspace Magnet Assembly

FIGURE 18. 178697 MODIFICATION KIT TO ADD POWER BACKSPACE MECHANISM



(For additional parts see Figure 18)

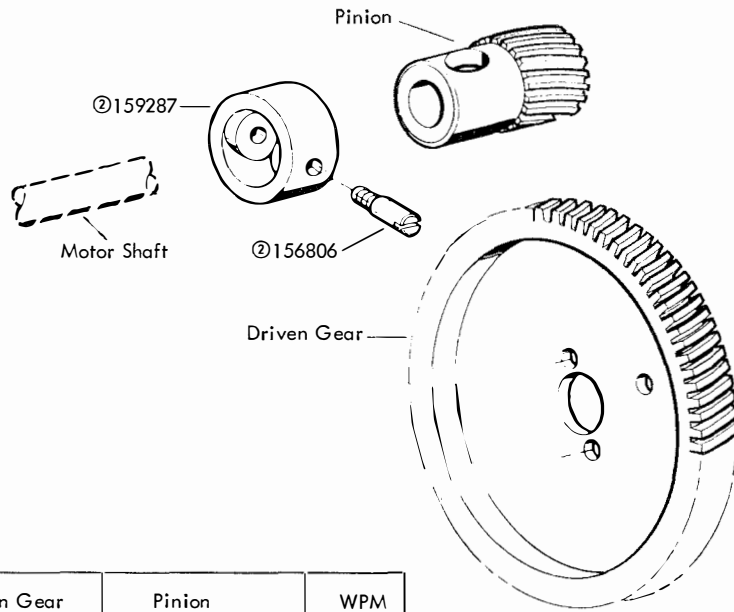
FIGURE 19. 178697 MODIFICATION KIT TO ADD POWER BACKSPACE MECHANISM



Punch Pin Position	#0	#1	#2	#3	#4	#5	#6	#7
Armature Number Used	194139	194139	194139	194138	194138	194138	194139	194139
	5 Level							
	6 Level							
	8 Level							

① Not Part of 194143

FIGURE 20. 194143 CODE MAGNET SELECTOR ASSEMBLY



Gear Set	Driven Gear	Pinion	WPM
144993	144758-92T	144757-23T	100
178179	159036-42T (S)	178180-7T (N) ①159037-7T (S)	200
—	305124-78T	305125-13T	100

① Must order separately, not part of 178179 Gear Set  
 ② Part of 178179 Gear Set

N = Nylon  
 S = Steel

FIGURE 21. GEAR CHART

## NUMERICAL INDEX

Part Number	Description and Page Number	Part Number	Description and Page Number	Part Number	Description and Page Number
190M	Coil, Magnet 14	90560	Washer, Flat 20	151229	Washer, Flat 16
224M	Coil, Magnet 19	90573	Spring 10	151246	Washer, Flat 10
252M	Coil, Magnet 15	90790	Washer, Flat 19	151329	Switch, Sensitive 14
255M	Coil, Magnet 9, 17	90791	Washer, Lock 3	151346	Screw (6-40 x 3/8 Fil) 17, 21
259M	Coil, Magnet 15	91120	Spring 3	151362	Wick, Felt 10, 17
278M	Coil, Magnet 21	93356	Washer, Felt 3, 12	151416	Nut (6-40 Hex) 3, 4
1028	Screw (4-40 x 1/4 Fil) 14, 15	98642	Washer, Lock 17	151442	Screw (6-40 x 1/2 Hex) 2, 10, 19
1036	Nut (6-40 Hex) 3	98726	Screw (3-48 x 1/4 Fil) 12, 16	151572	Washer, Lock 16
1256	Screw, Set (6-40) 11	110743	Washer, Lock 2 to 7, 9 to 21	151606	Screw (10-32 x 1/4 Hex) 12, 16
2034	Washer, Flat 19	112091	Post, Spring 14, 15	151610	Washer, Flat 14, 15
2191	Washer, Lock 2 to 5, 7, 9 to 17, 19, 20, 21	112626	Nut (10-32 Hex) 14	151626	Terminal 7, 9, 13 to 16
2438	Washer, Flat 14, 15	113850	Washer, Flat 14	151629	Nut (6-40 Lug) 4, 5, 12
2669	Washer, Lock 10	114876	Washer, Flat 12	151630	Screw (6-40 x 3/4 Hex) 2, 3, 5, 9 to 12, 14 to 17, 21
3128	Washer, Flat 9, 17	117406	Spring, Contact 18	151631	Screw (6-40 x 5/16 Hex) 10, 12 to 16, 20
3438	Washer, Flat 16	119467	Insulator (.032" Thk) 14	151632	Screw (6-40 x 3/8 Hex) 2, 9 to 12, 14, 15, 19, 21
3598	Nut (6-40 Hex) 2 to 5, 9, 10, 12, 17, 19, 21	119647	Ring, Retaining 3	151637	Screw (4-40 x 1/4 Fil) 2, 5, 6, 8
3599	Nut (4-40 Hex) 2, 6, 12, 14, 19	119648	Ring, Retaining 2, 3, 19, 20	151638	Washer, Spring 10
3639	Washer, Lock 16	119649	Ring, Retaining 3, 6, 14, 15, 19	151639	Washer, Flat 10
3640	Washer, Lock 11, 12, 19	119650	Ring, Retaining 4, 5, 14	151657	Screw (6-40 x 1/4 Fil) 12, 16
3642	Washer, Flat 17	119651	Ring, Retaining 5, 13, 19, 20	151688	Screw (4-40 x 5/8 Fil) 12, 18
3650	Washer, Flat 19	119652	Ring, Retaining 3, 4, 5, 12, 14	151689	Screw (4-40 x 3/4 Fil) 18
5363	Spring, Compression 3	119653	Ring, Retaining 5	151690	Screw (10-32 x 5/16 Fil) 10
7002	Washer, Flat 2, 3, 4, 7, 10, 12 to 17, 19, 21	119654	Ring, Retaining 10	151692	Screw (6-40 x 3/16 Fil) 17
7603	Spring 14	119655	Ring, Retaining 10	151693	Screw (6-40 x 9/16 Fil) 12
8330	Washer, Flat 4, 5, 12, 14, 19, 20, 21	119656	Ring, Retaining 11	151721	Screw (6-40 x 3/4 Hex) 19
31636	Spring 12	121125	Washer, Spring 15	151722	Screw (6-40 x 3/16 Hex) 2, 9, 12, 14, 16, 19, 21
36318	Washer, Flat 12, 14	121243	Clamp, Cable (3/16" ID) 15	151724	Screw (10-32 x 5/8 Hex) 16
41382	Spring 3, 12	121244	Clamp, Cable (1/4" ID) 13	151732	Screw (4-40 x 11/32 Fil) 7
41732	Plate, Clamp 13, 18	122373	Screw, Shoulder (6-40) 17	151733	Screw (4-40 x 9/16 Fil) 13
41733	Insulator (.062" Thk) 13	124177	Washer, Lock 10	151736	Spring 11
42823	Washer, Flat 11	124334	Screw (6-40 x 1-27/32 Hex) 7	151737	Screw (4-40 x 11/64 Hex) 6, 11, 14, 15, 19
45815	Washer, Lock 12, 16	125011	Washer, Flat 2, 6 to 10, 12, 14 to 17, 20, 21	151739	Screw, Identification (6-40) 5
49695	Washer, Flat 21	125015	Washer, Flat 4, 16, 17	152441	Washer, Flat 12, 16
55063	Spring 2, 19, 20	125181	Screw (2-56 x 3/8 Fil) 14	152634	Washer, Flat 4
61085	Washer, Lock 16	125215	Screw (4-40 x 3/16 Hex) 19	152893	Screw (4-40 x 1/4 Hex) 2, 3, 4, 7, 8, 10, 12, 14, 15, 16, 19
70314	Washer, Flat 11	125231	Nut (10-32 Hex) 10	153267	Washer, Felt 2
70529	Stiffener 18	128357	Ring, Retaining 4	153577	Washer, Felt 5
70878	Spring 19	131099	Terminal 7	153631	Network, Spark Suppression 13
70885	Washer, Spring 9, 17	138092	Knob 13	153799	Screw (4-40 x 21/64 Hex) 2
71437	Washer, Flat 4	139752	Screw (4-40 x 11/64 Fil) 12	153817	Screw (4-40 x 3/8 Hex) 10, 20
74014	Screw (10-32 x 3/4 Hex) 16	142953	Post 16	153819	Washer, Lock 12, 16
74536	Screw, Set (6-40) 12	144757	Gear (23T) 22	153839	Screw (6-40 x 5/8 Hex) 4, 5, 9, 12
74547	Collar 12	144758	Gear (92T) 22	154242	Screw (6-40 x 5/16 Hex) 10
74716	Bushing 18	144993	Gear Set (100 WPM) 22	154398	Bearing, Needle 11
74722	Washer, Flat 12	145795	Follower 18	154457	Guide, Tape 3
74728	Terminal, Contact 13, 18	145796	Contact Assembly, Auxiliary 18	154698	Wick, Felt 3
76246	Bushing, Insulating 13	150000	Drum, Clutch 11	155556	Link 5
76806	Spring 14, 15	150014	Disk, Adjusting 11	155724	Strip, Insulating 7
80755	Bushing, Insulating 18	150029	Lever, Shoe Release 11	155725	Plate 7
81726	Terminal 13	150034	Wick, Felt 11	155750	Sleeve, Insulating (3/32 ID x 1/2" Lg) 9, 12
82097	Spring, Contact 18	150040	Disk, Clutch (2 Stop) 11	155751	Sleeve, Insulating (1/8 ID x 1" Lg) 13, 14
82547	Insulator (.094" Thk) 18	150043	Screw (6-40 x 5/8 Fil) 11	155753	Sleeve, Insulating (1/8 ID x 1/2" Lg) 9, 13, 16
82548	Insulator (.062" Thk) 18	150044	Shoe, Secondary Clutch 11	155754	Sleeve, Insulating (1/16 ID x 1/2" Lg) 16
82930	Spring, Contact 18	150241	Spring 11, 12	155779	Plate, Lid 6
83877	Spring 14	150355	Lever, Latch 12		
84575	Spring 19	150356	Lever, Trip 12		
84705	Spring, Contact 18	150830	Bushing, Shoulder 11		
84892	Stiffener 13	150841	Bearing 11		
85976	Washer, Flat 15	150923	Washer, Felt 4, 5, 12		
86079	Washer, Felt 15	150991	Washer, Felt 5		
86304	Spring 20	151073	Screw (4-40 x 5/32 Fil) 2, 4, 6, 20		
87401	Spring 9, 17	151152	Screw (4-40 x 3/16 Hex) 2, 6, 7, 9, 14, 17, 19, 21		
90361	Washer, Felt 4	151222	Washer, Felt 4		

## NUMERICAL INDEX (Continued)

Part Number	Description and Page Number	Part Number	Description and Page Number	Part Number	Description and Page Number
155781	Bracket 6	156806	Post 22	159074	Shaft 6
155782	Bracket 7	156884	Arm, Rocker 4	159077	Plate, Nut 7
155783	Plate 7	156933	Ratchet (36T) 14	159078	Block, Contact 7
156008	Wheel, Feed 3	156987	Screw (6-40 Spl) 10	159079	Lever 7
156009	Post, Slide 4	156988	Race, Inner 10	159084	Cable w/Terminals 13
156012	Spring, Punch Block 2	156989	Bearing 10	159085	Cable w/Terminals 9
156013	Screw (4-40 Spl) 4	156990	Race, Inner 10	159089	Contact Assembly, Magnet Release 13
156015	Plate, Spring 2	156994	Strip, Felt 10	159090	Guide 9
156016	Link, Front Drag 4	156998	Retainer, Roller 10	159091	Bracket w/Spring 9
156017	Shaft, Eccentric 4	158177	Collar 11	159093	Plate 5
156019	Washer, Felt 3, 5	158182	Disk, Clutch Cam 11	159094	Plate 7
156020	Slide 2	158186	Screw (4-40 x 7/32 Fil) 11	159095	Spring 7
156024	Plate, Rear 2	158745	Clamp, Bearing 10	159097	Screw, Contact (4-40) 7
156028	Plate, Front 3	158753	Armature, Magnet 14, 15	159099	Lever 7
156036	Guide, Tape 3	158754	Core, Magnet 15	159251	Bracket w/Stud 13
156040	Post 3	158757	Hinge, Mounting 14, 15	159256	Bail 13
156042	Post, Spacing 3	158758	Shaft 14, 15	159264	Cable w/Terminals 7
156043	Bushing 4	158760	Post, Spring 14, 15, 19	159272	Spring 6
156044	Stud, Die Wheel 3	158763	Bracket 15	159287	Retainer, Pinion 22
156045	Shaft, Feed Wheel 3	158935	Frame 14	159301	Frame 14
156046	Block, Tape Guide 2	158940	Wick, Felt 11	159302	Bail 14
156047	Spring, Torsion 3	158941	Bail, Rocker 10	159303	Bracket 14
156050	Stud, Eccentric 3	159003	Core 9, 17, 21	159304	Lever, Switch 14
156051	Bushing, Eccentric 4	159004	Spacer, Bearing 12	159309	Cable Assembly 14
156052	Shoe, Tape 3	159005	Spacer, Bearing 12	159341	Bearing, Ball 10
156054	Lever, Detent 3	159006	Armature, #5 & #6 9	159345	Block, Spacing 7
156055	Wheel, Die 3	159007	Armature, #2 & #3 9	159411	Bearing Assembly 10
156058	Link, Rear 4	159008	Armature, #1 & #4 9	159427	Bracket, Stop 12
156060	Shaft, Eccentric 4	159010	Bracket 9	159430	Lever, Slide Trip 12
156061	Arm, Tape Shoe 3	159011	Bracket, Spring 12	159544	Release, Clutch 12
156062	Post, Pivot 3	159012	Bracket, Rod 9	159560	Spring 2
156067	Guide, Slide Post 4	159014	Rod, 2-15/16" Lg 9	159601	Bracket, Spring 6
156070	Bail, Toggle 4	159015	Rod, 1-15/32" Lg 9	159606	Pawl, Check 14
156077	Plate w/Post 4	159016	Post, Guide 12	159608	Plate 14
156089	Slide w/Insulator 2	159017	Yoke 9	159625	Bracket, Bail Guide 10
156090	Screw, Adjusting (6-40) 3	159018	Pawl, Blocking 12	159651	Plate, Nut 12
156093	Washer, Felt 4	159019	Plate 9	159652	Plate w/Bushing 12
156094	Link, Front 4	159020	Guide 9	159656	Block Assembly, Punch 2
156095	Bushing 4	159022	Bracket, Magnet 15	159733	Upstop, Armature 14
156103	Strip, Felt 4	159023	Lever, Trip 12	159901	Plate w/Post 20
156104	Shaft 2	159025	Lever w/Shaft 12	159903	Bellcrank 20
156106	Bail 2	159026	Spring, Contact 13	159909	Pawl, Feed 20
156132	Bearing, Eccentric 11	159032	Plate 12	159911	Plate 20
156134	Plate, Adjusting 14	159033	Lever, Reset 12	159913	Screw, Eccentric (6-40) 20
156137	Washer, Flat 11	159036	Gear (42T) 22	159954	Link, Adjusting 19
156146	Spacer 14	159037	Pinion (7T) 22	159955	Link, Drive 19
156153	Collar, Eccentric 11	159038	Guard 9	159956	Post 19
156155	Pawl, Feed 11	159039	Spring, Torsion 6	159957	Link 19
156156	Pawl, Check 11	159040	Bracket 6	159958	Latch 19
156162	Washer, Flat 4	159041	Post 5	159959	Extension 19
156163	Guide 2	159046	Plate, Front 5	159960	Eccentric 19
156165	Washer, Felt 4, 12	159049	Bracket w/Studs 5	159961	Arm, Eccentric 19
156169	Washer, Felt 4	159050	Link 5	159962	Ring, Retaining 19
156172	Rod 2	159051	Shaft, Toggle 5	159963	Hub 19
156173	Stud 2	159052	Plate 6	159965	Arm, Adjusting 19
156184	Bracket, Anchor 16	159053	Plate, Rear 5	159973	Bracket w/Bushing 19
156267	Lever, Trip 12	159054	Bracket, Spring 6	159974	Eccentric 19
156366	Shaft, Rocker Bail 10	159055	Bracket w/Studs 6	159975	Bail, Armature 19
156403	Disk, Bearing 10	159057	Post, Guide 5	159976	Armature 19
156465	Washer, Spring 10	159058	Post 5	159977	Hinge 19
156472	Post, Spring 9, 17	159059	Arm 5	159978	Shaft 19
156474	Bar 12	159060	Slide, Sensing 6	159979	Arm, Non-Repeat 19
156501	Screw (6-40 x 7/32 Fil) 17	159062	Guide 6	159980	Post, Spring 19
156515	Washer, Felt 5	159063	Plate, Rear 5	159987	Bracket, Guide 20
156536	Screw (4-40 x 1/8 Fil) 9	159064	Plate, Front 5	160087	Post, Spring 12
156576	Washer, Felt 10	159065	Bracket 9	160579	Cam 11
156577	Roller, Detent Lever 3	159070	Slide 6		



## NUMERICAL INDEX (Continued)

Part Number	Description and Page Number	Part Number	Description and Page Number	Part Number	Description and Page Number
160581	Lever, Upper Reset 12	162992	Block Assembly, Punch 2	178180	Pinion (7T) 22
160582	Washer, Felt 11	162993	Block Assembly, Punch 2	178694	Plate, Handle Mounting 15
160672	Stud 20	162994	Block Assembly, Punch 2	178695	Foot 17
160674	Nut, Shoulder (6-40) 20	163291	Modification Kit 3	178697	Modification Kit 19, 20
160679	Spring 12	164259	Chute, Tape (1" Tape) 3	178711**	Chute, Chad 16
160842	Washer, Spring 11	164260	Chute, Tape (7/8" Tape) 3	179573	Nut (6-40 Hex) 4
160948	Screw (2-56 Spl) 3	164261	Chute, Tape (11/16" Tape) 3	179808	Spring, Contact 13
160949	Spring 11	164279	Chute, Chad 16	179945	Modification Kit 2
161107	Stud 3	164300	Spacer, .100" Thk 2, 12	179947	Spring, Chad Box 2
161108	Stud 4	164303	Cable w/Terminals 16	179948	Stud, Mounting (2-56) 2
161109	Post, Guide 4	164307	Spring, Punch Block 2	179952	Box, Chad 2
161139	Nut (6-40 Hex) 3	164309	Post, Guide 4	192661	Post 10
161238	Connector, Receptacle (36 Pt) 12, 16	164511	Lever w/Hub 3	192662	Link w/Stud 10
161239	Connector, Plug (36 Pt) 16	164513	Pawl, Feed 4	192663	Link w/Stud 10
161493	Post, Supporting 20	164515	Spring, Torsion 3	193564	Spring, Contact 18
161495	Plate 8	164803	Frame 16	193784	Screw, Contact 7
161496	Bracket, Spring 8	164804	Shaft w/Bearing 11	193790	Lever w/Contact 7
161497	Block, Lid 8	164805	Lever w/Shaft 12	193791	Lever w/Contact 7
161499	Plate 8	164806	Bracket, Receptacle 16	193804	Armature 19
161502	Slide, Sensing 8	164819	Block Assembly, Punch 2	193821	Bracket w/Post 19
161526	Connector, Receptacle (14 Pt) 16	164820	Bracket, Receptacle 12	193822	Clamp 19
161652	Plate, Front 8	164821	Cable Assembly 12	193824	Latch w/Hub 19
162248	Hub 10	164851	Wheel, Feed 3	193825	Magnet Assembly, Backspace 19
162573	Retainer 11	170193	Guard, Back Space 20	193854	Cable Assembly 16
162850	Handle 15	170199	Bracket, Anchor 16	194131	Bracket, Spring 12
162903	Bracket, Connector 16	170210	Block Assembly, Punch 2	194135	Casting, Upper Magnet Mounting 21
162912	Guard, Rear 16	170211	Arm, Rocker 4	194136	Casting, Lower Magnet Mounting 21
162920	Chute, Chad 16	170215	Spring, Punch Block 2	194137	Plate, Armature Mounting 21
162921	Contact Assembly 13	170216	Plate, Front 3	194138	Armature 21
162922	Bracket w/Stud 13	170217	Post 3	194139	Armature 21
162926	Plate w/Bushing 12	170218	Shaft, Feed Wheel 3	194140	Guide 21
162928	Bracket, Magnet 15	170219	Stud, Die Wheel 3	194141	Guide 21
162929	Bail, Armature 15	170225	Block, Tape Guide 2	194142	Plate, Magnet Mounting 21
162930	Frame 16	170241	Screw, Adjusting (6-40) 3	194143	Selector Assembly, Code Magnet 21
162932	Bracket, Magnet Coil 17	170242	Slide, Feed Hole Punch 2	194146	Spacer, Bearing 10
162933	Bracket, Magnet Coil 17	170244	Wheel, Die 3	194147	Plate, Selector Locating 10
162934	Bracket, Magnet Coil 17	170245	Wheel, Feed 3	194157	Post, Spring 21
162936	Armature, #1 & #6 17	170246	Slide w/Insulator 2	194158	Plate 10
162937	Armature, #0, #2 & #7 17	170247	Guide 2	194161	Cable Assembly 16
162938	Armature, #3, #4 & #5 17	170779	Wheel, Feed 3	194162	Bail, Reset 4
162942	Shaft w/Bearing 11	170788	Wheel, Die 3	194177	Bracket w/Spring 17, 21
162944	Lever, Trip 12	171259	Spring 12	194992	Modification Kit 2, 3
162946	Rod, 1-7/32" Lg 17, 21	172621	Frame, Magnet Support 17	194993	Guide, Tape 2
162947	Rod, 1-13/32" Lg 17, 21	172983	Bracket, Spring 4	195377	Network, Spark Suppression 15
162948	Rod, 3-15/64" Lg 17, 21	172984	Bracket, Spring 2	199506	Gasket 2
162949	Rod, 3-29/64" Lg 17, 21	172993	Spring 2	304874	Chute, Chad 16
162950	Guide 17	173203	Sleeve, Bearing 11	305121	Shaft w/Bearing 11
162951	Guide 17	173205	Shaft w/Bearings 11	305124	Gear (78T) 22
162952	Plate, Magnet 17	173339	Modification Kit 11	305125	Pinion (13T) 22
162960	Pawl, Blocking 12	173340	Collar 11	307093	Guard, Gear 16
162961	Spacer, Bearing 12	173806	Sleeve, Bearing 11	307095	Hub 10
162962	Extension, Blocking Pawl 12	173807	Screw, Set (6-40) 11		
162964	Spacer, .160" Thk 12	173813	Bracket 18		
162967	Cam 11	173814	Follower 18		
162988	Bail 10	176647	Latch w/Hub 19		
		178179	Gear Set 22		

