

28 SEQUENCE SELECTOR BASE (LSB)

PARTS

Figure	Contents	Page	Figure	Contents	Page
1	Selector Base and Components	2	7	Signal Generator Frame	
2	Selector Base and Components	3		Mechanism	7
3	151137 and 165910 Intermediate Gear Assemblies	4	8	154165 Contact Box Assembly	8
4	Signal Generator Rear Plate Mechanism	4	9	Code Bar Mechanism	9
5	Signal Generator Front Plate Mechanism	5	10	Answer Back Mechanism	10
6	Signal Generator Shaft Mechanism	6	11	Base Plate and Rails	11
			12	Slide and Tray Mechanism	11
			13	Gear Sets	12
				Numerical Index	13

PAINT FINISH COLOR CODE CHART									
(for parts and assemblies requiring a paint finish)									
Color	Finish Suffixes				Color	Finish Suffixes			
	Wrinkle Finish	Smooth Finish	Textured Vinyl	Smooth Vinyl		Wrinkle Finish	Smooth Finish	Textured Vinyl	Smooth Vinyl
Beige		ET			Gray, Federal		BV	GG	
Beige, Light		EL		HC	Gray, Green	AB (40)	BK	GA (45)	
Beige, Rose		ER			Gray, Light		EJ		HB (68)
Black	AA (37)				Gray, Covert				HE
Black, High Gloss		BA (34)			Gray, Olive		EW	GE	HF (46)
Black, Semi Gloss		BB			Gray, Maritime Deck	AJ	BJ		
Blue, Aqua		EK			Gray, Oxford		EP		
Blue, Brussels Light		EC			Green, Gray	AB (40)	BK	GA (45)	
Blue, Medium		ES			Green, Moss		EN		HD
Brown, Dark	AD (38)			HG	Ivory		EM		
Brown, Light	AC (39)				Pink, Rose		EU		
Fawn					Turquoise		EV		
Gray, Beige			GC		White		EH		
Gray, Charcoal	AL	BZ	GF	HA	Yellow, Pastel		EG		
Gray, Dark			GB						

The double asterisk (\*\*) denotes a painted part. Suffix to be applied following the part number. Number in parentheses indicates Bell System code.

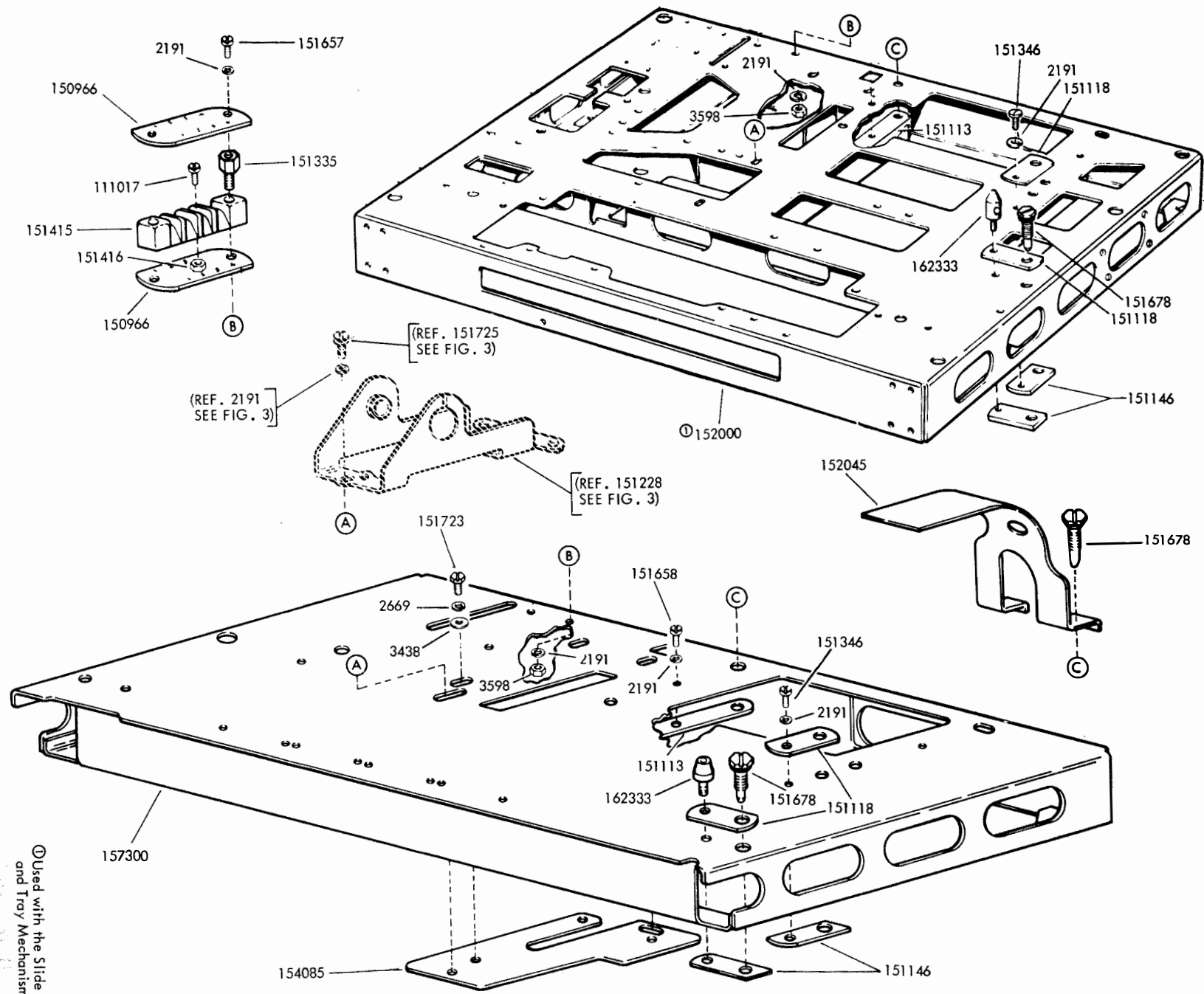
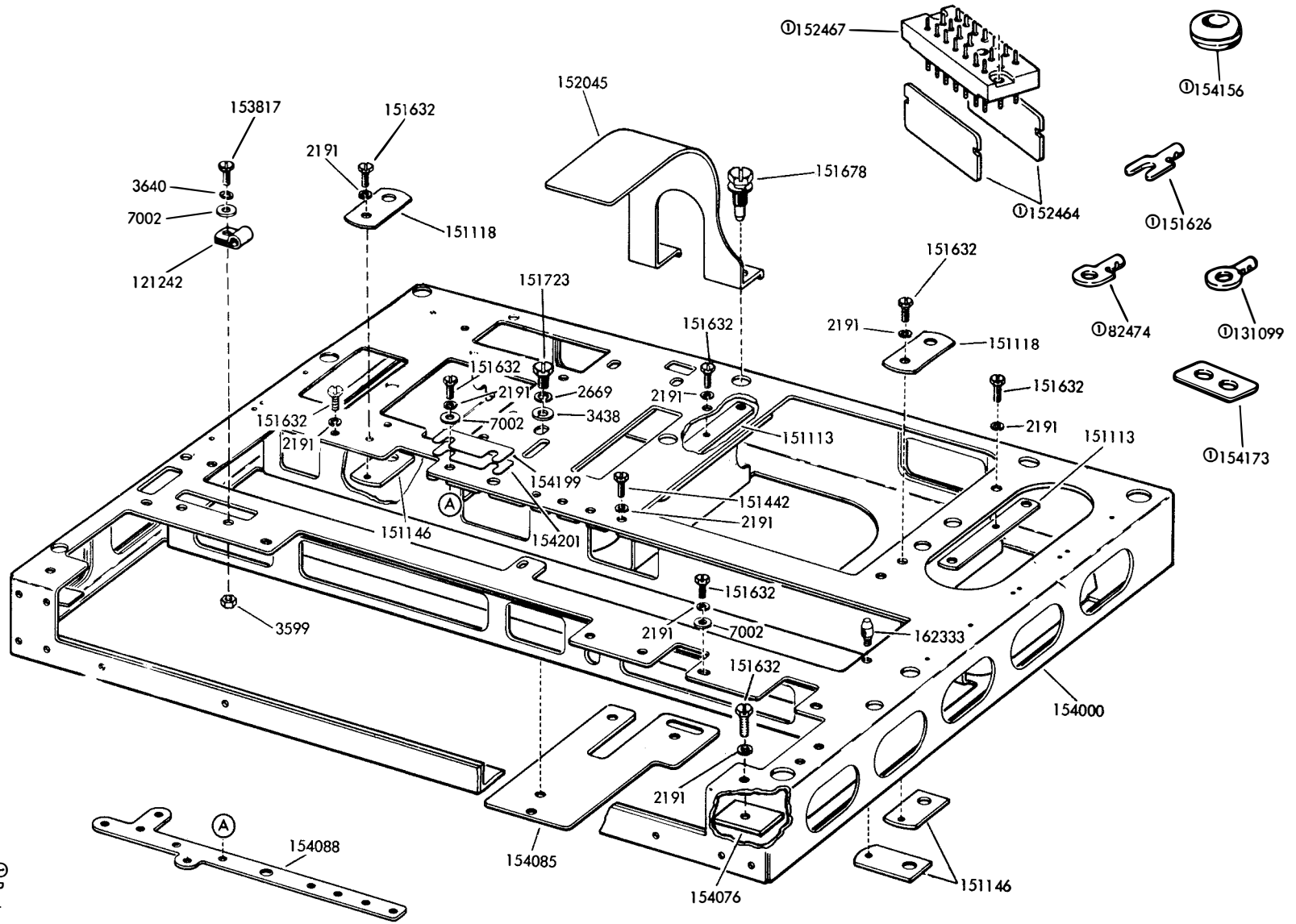


FIGURE 1. SELECTOR BASE AND COMPONENTS

ⓐ Used with the Slide and Tray Mechanism

FIGURE 2. SELECTOR BASE AND COMPONENTS



① Part of 165909 Cable

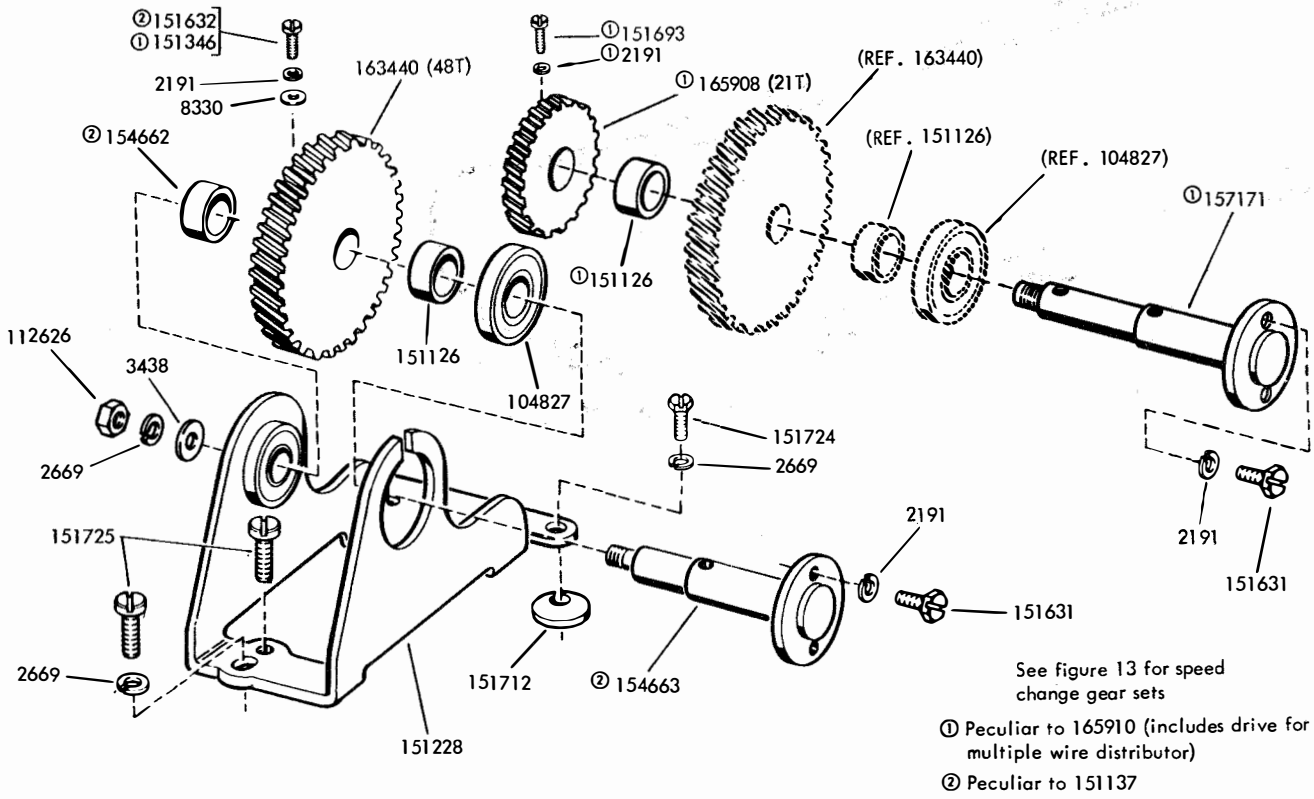


FIGURE 3. 151137 AND 165910 INTERMEDIATE GEAR ASSEMBLIES

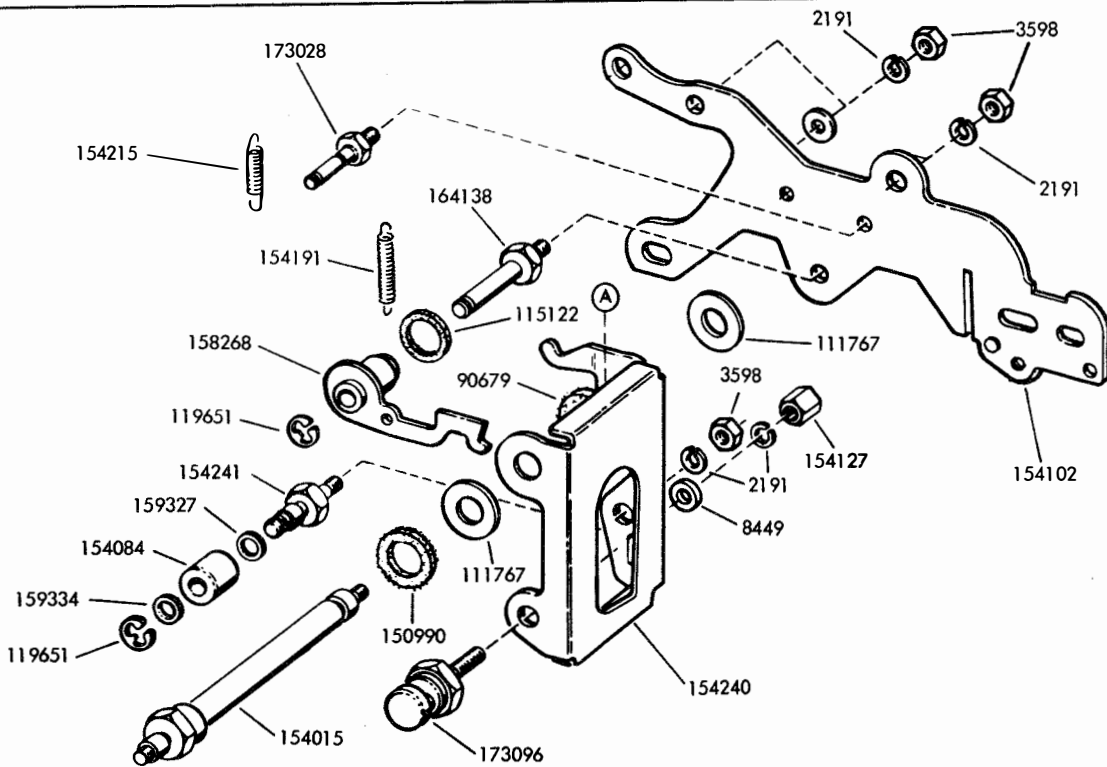
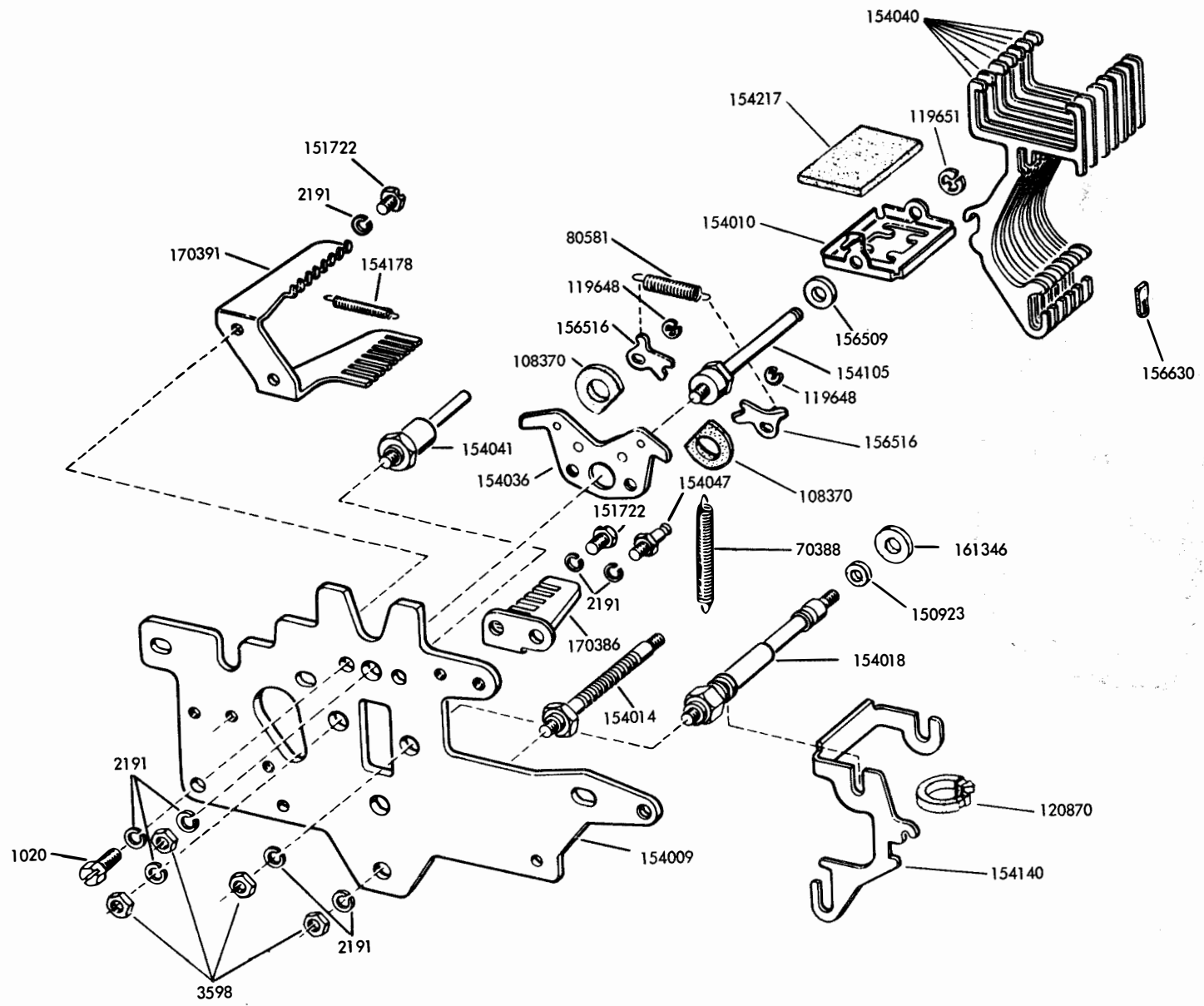


FIGURE 4. SIGNAL GENERATOR REAR PLATE MECHANISM

FIGURE 5. SIGNAL GENERATOR FRONT PLATE MECHANISM



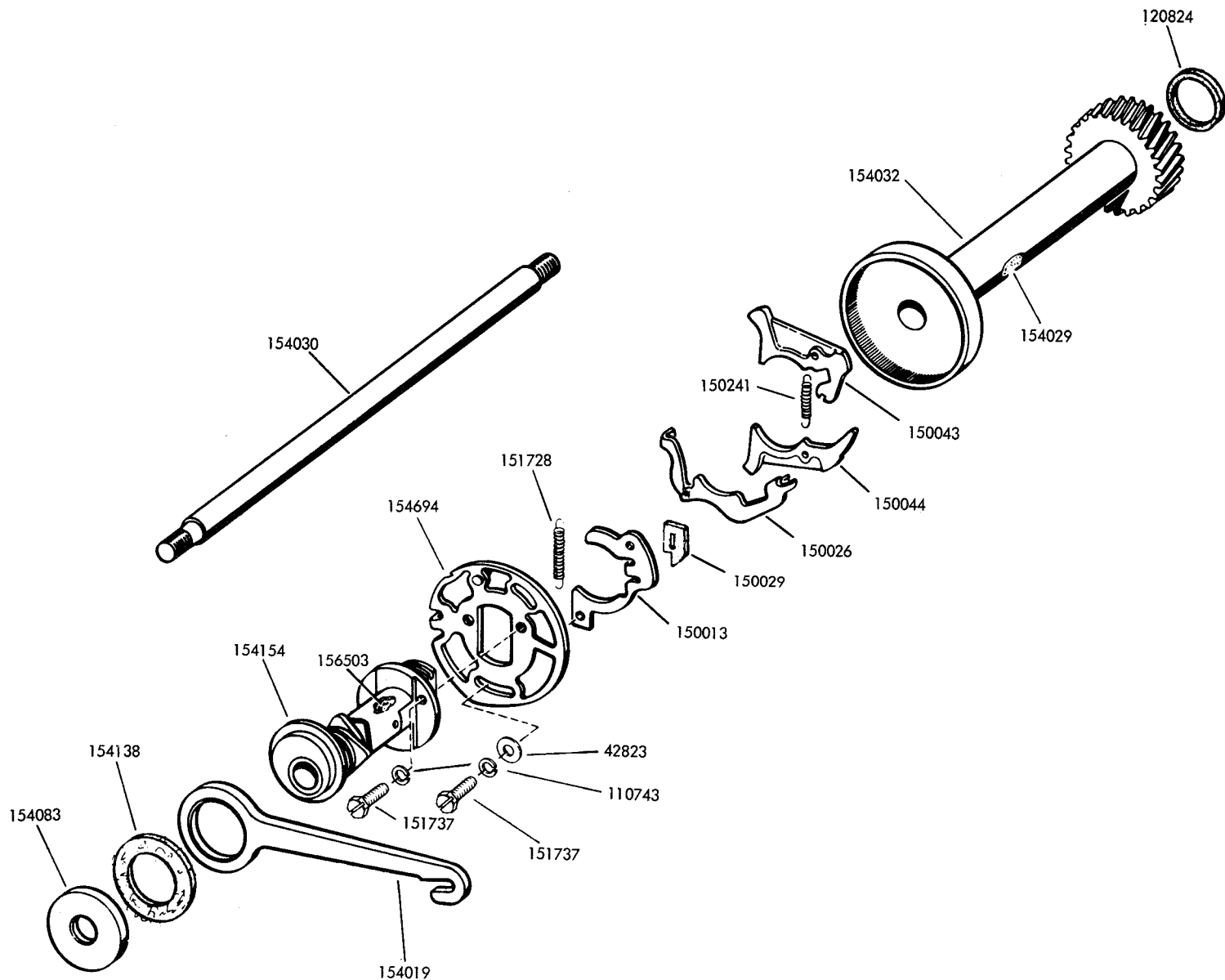


FIGURE 6. SIGNAL GENERATOR SHAFT MECHANISM

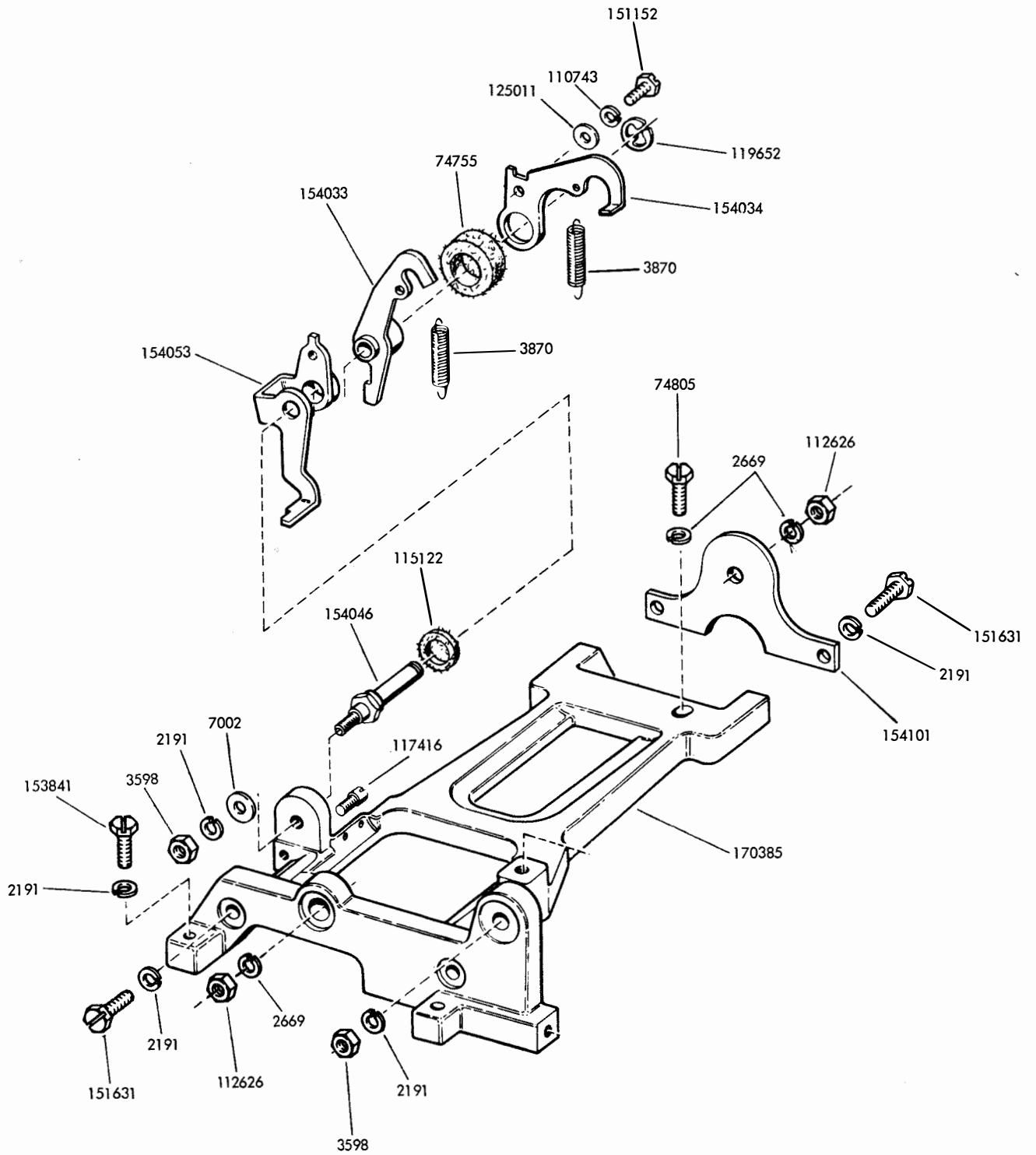


FIGURE 7. SIGNAL GENERATOR FRAME MECHANISM

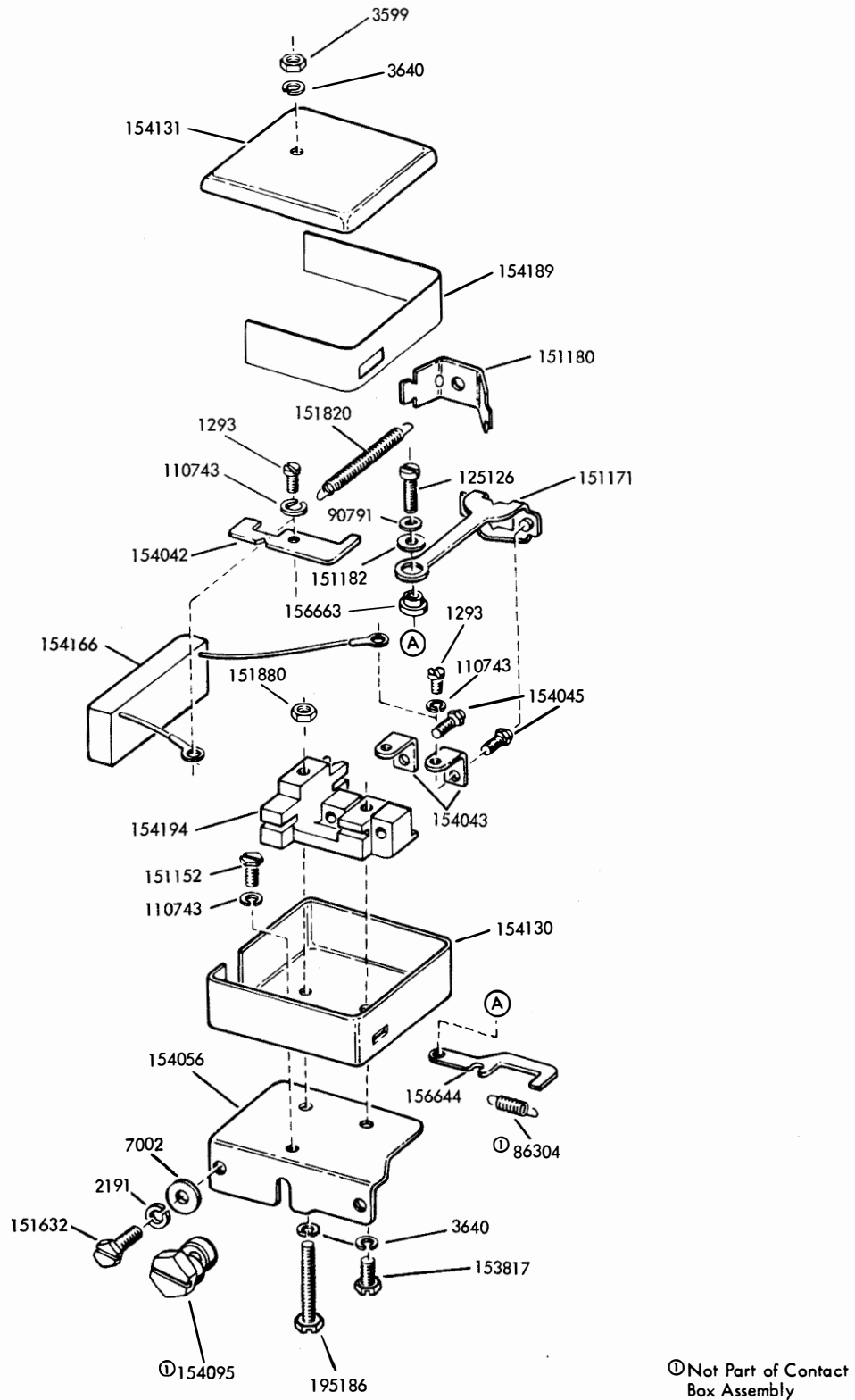


FIGURE 8. 154165 CONTACT BOX ASSEMBLY



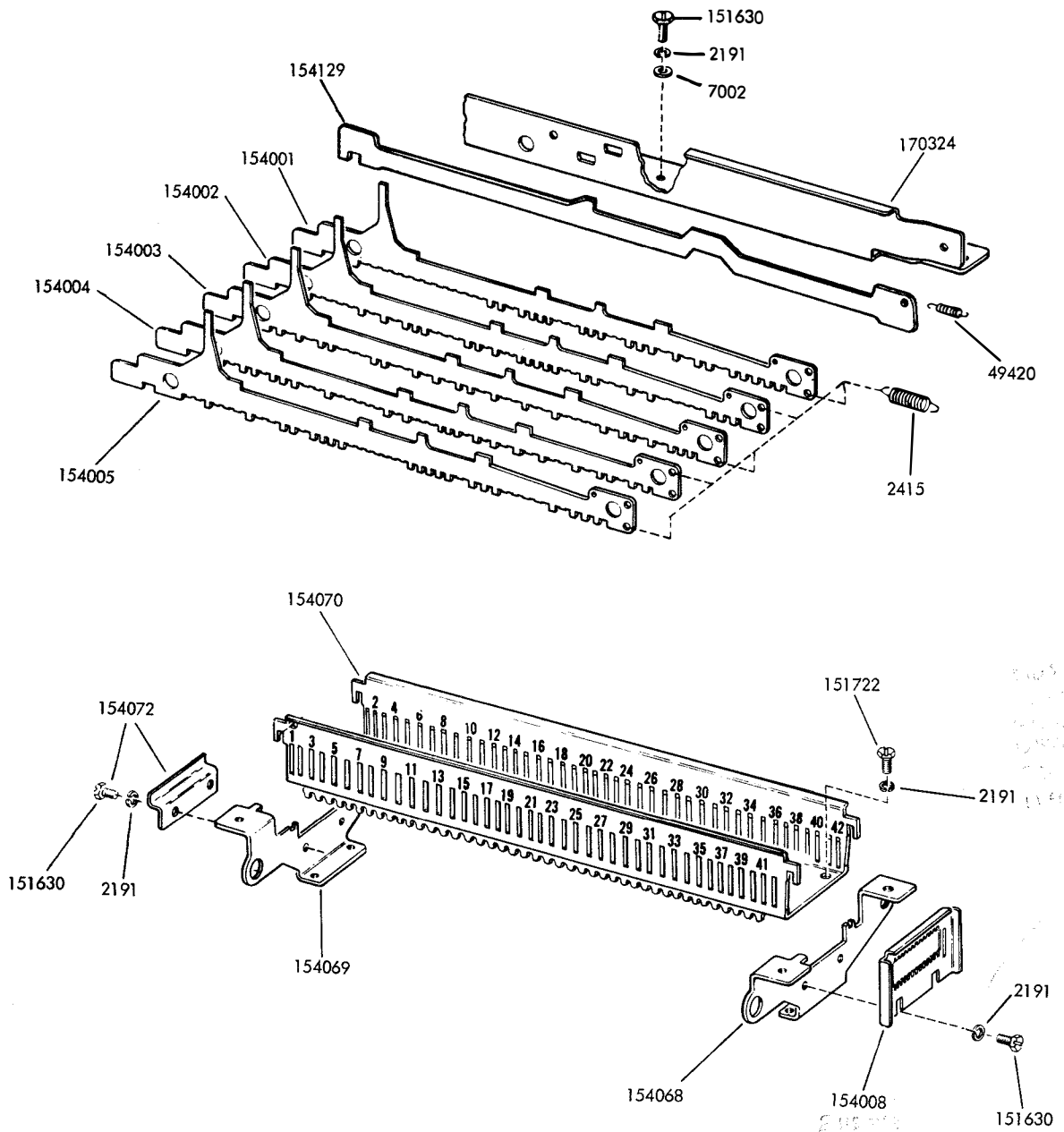


FIGURE 9. CODE BAR MECHANISM

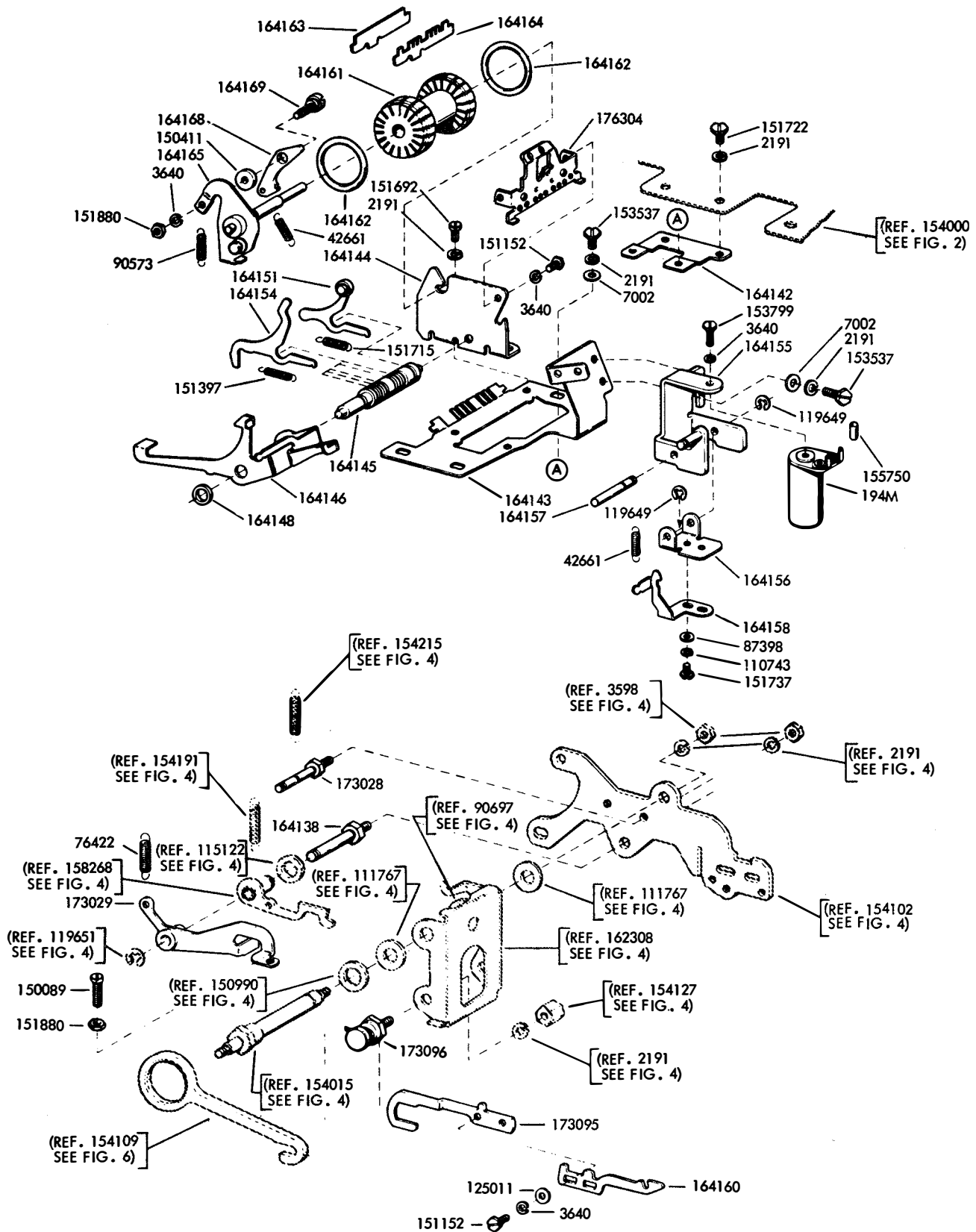


FIGURE 10. ANSWER BACK MECHANISM

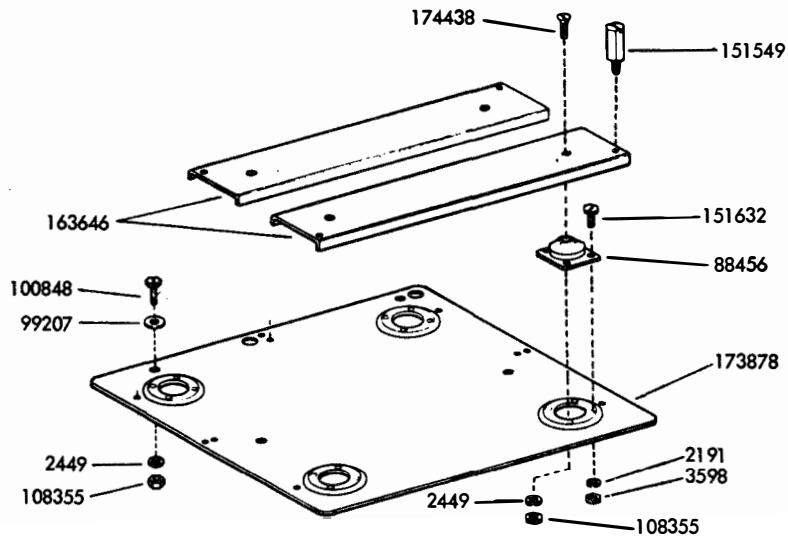


FIGURE 11. BASE PLATE AND RAILS

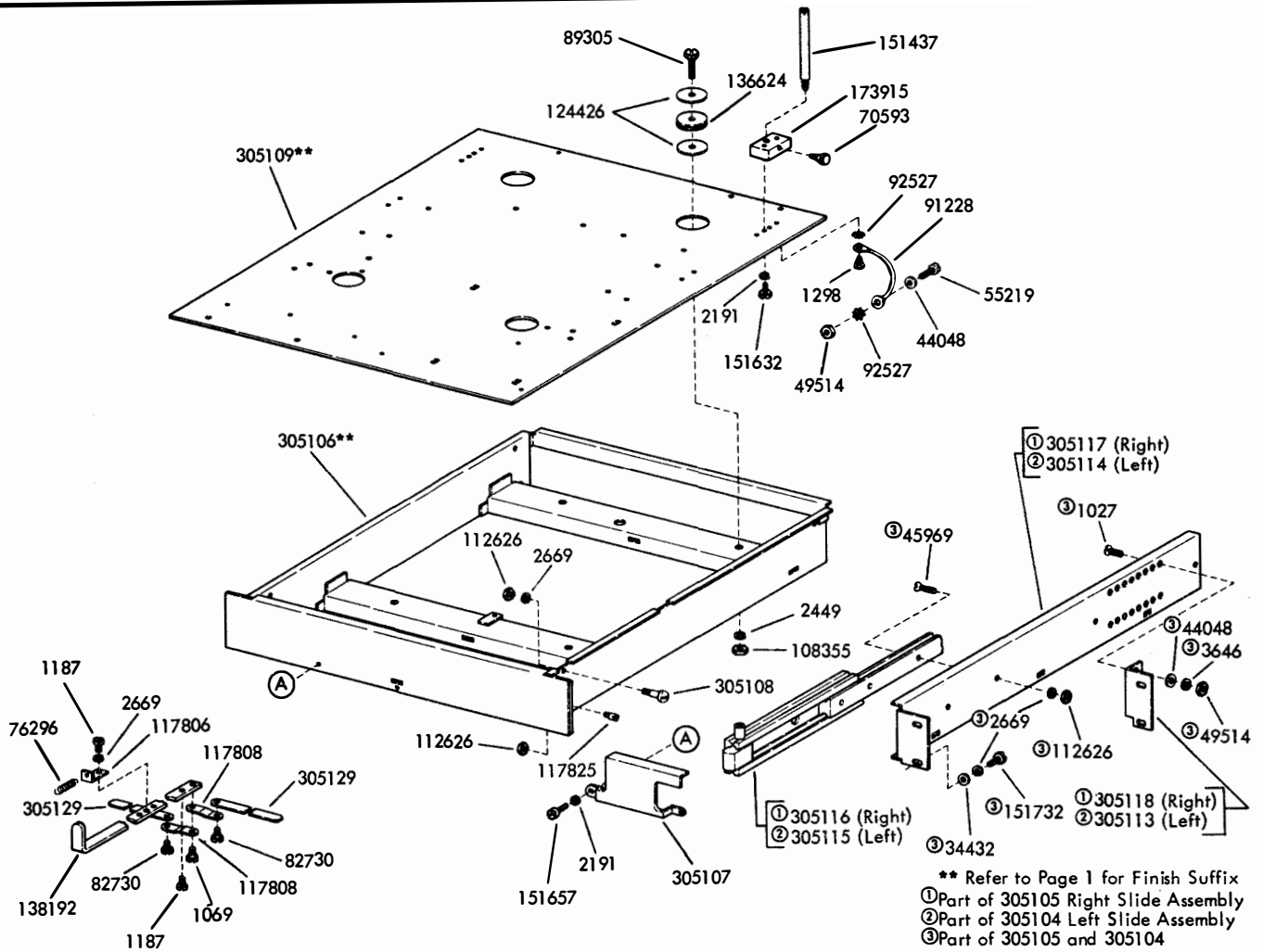
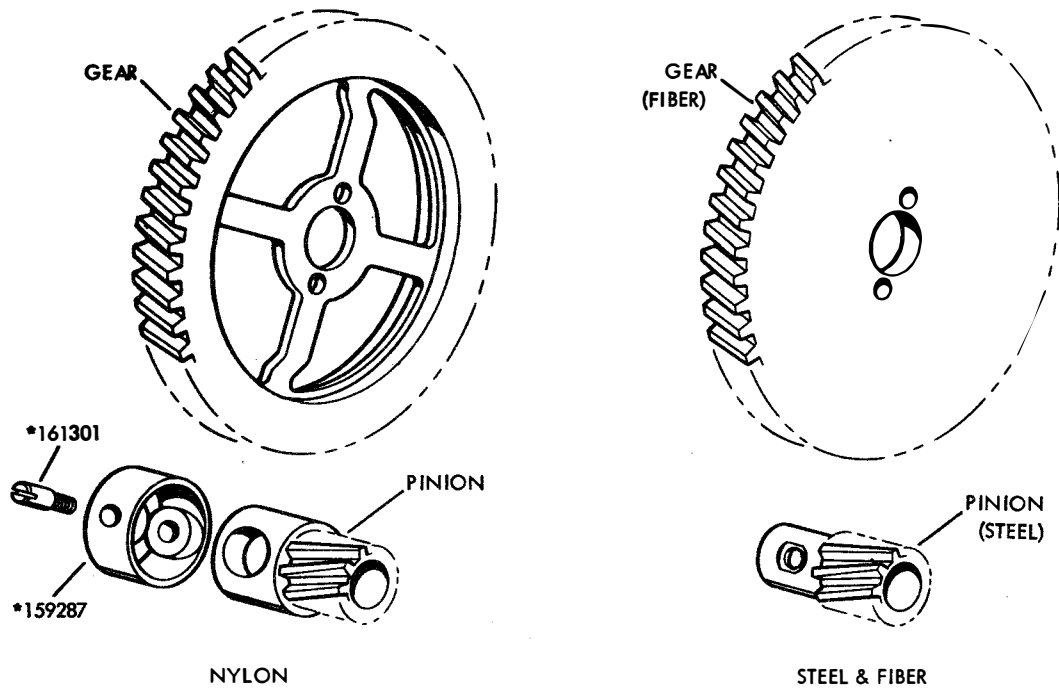


FIGURE 12. SLIDE AND TRAY MECHANISM



\*Supplied with gear set

GEAR CHART-FIBER & STEEL SETS				
SPEED	UNIT CODE	GEAR SET	PINION	GEAR
368OPM-60WPM (45.45 BAUD)	7.42	151060	151130 (14T)	151131 (96T)
404OPM-67WPM (50 BAUD)	7.42	152766	152765 (13T)	152764 (81T)
460OPM-75WPM (56.88 BAUD)	7.42	151075	151132 (17T)	151133 (93T)
600OPM-100WPM (74.2 BAUD)	7.42	151100	151134 (20T)	151135 (84T)
368OPM-60WPM (45.5 BAUD)	7.42	①159660	159661 (10T)	159662 (57T)
404OPM-67WPM (50 BAUD)	7.42	①159667	159663 (15T)	159664 (78T)
460OPM-75WPM (56.9 BAUD)	7.42	①159675	159665 (14T)	159666 (64T)
600OPM-100WPM (74.2 BAUD)	7.42	①159700	159668 (20T)	159669 (70T)

① Used with synchronous motors operating at 3000 rpm on 50 cycle current.

GEAR CHART-NYLON SETS				
SPEED	UNIT CODE	GEAR SET	PINION	GEAR
368OPM-60WPM (45.45 BAUD)	7.42	161293	159278 (14T)	159279 (96T)
460OPM-75WPM (56.88 BAUD)	7.42	161294	159281 (17T)	159282 (93T)
600OPM-100WPM (74.2 BAUD)	7.42	161295	159284 (20T)	159285 (84T)
404OPM-67WPM (50 BAUD)	7.42	194927	194925 (13T)	194926 (81T)

FIGURE 13. GEAR SETS

## NUMERICAL INDEX

Part Number	Description and Page Number	Part Number	Description and Page Number	Part Number	Description and Page Number
194M	Coil, Magnet 10	121242	Clamp, Cable (1/8" ID) 3	152467	Connector, Plug (20 Pt) 3
1020	Screw (6-40 x 1/4 Hex) 5	124426	Washer 11	152764	Gear (81 T) 12
1027	Screw (8-32 x 1/2 Flat) 11	125011	Washer, Flat 7, 10	152765	Pinion (13 T) 12
1069	Screw, Shoulder (10-32) 11	125126	Screw (2-56 x 9/32 Fil) 8	152766	Gear Set (67 WPM) 12
1187	Screw (10-32 x 1/4 Fil) 11	131099	Terminal 3	153537	Screw (6-40 x 9/32 Hex) 10
1293	Screw (4-40 x 1/8 Fil) 8	136624	Grommet, Rubber 11	153799	Screw (4-40 x 21/64 Hex) 10
1298	Screw (8-32 x 1/4 Hex) 11	138192	Rod, Release 11	153817	Screw (4-40 x 3/8 Hex) 3, 8
2191	Washer, Lock 2, 3, 4, 5, 7, 8, 9, 10, 11	150013	Disk, Adjusting 6	153841	Screw (6-40 x 9/16 Hex) 7
2415	Spring 9	150026	Lever, Shoe Release 6	154000	Base 3
2449	Washer, Lock 11	150029	Wick, Felt 6	154001	Bar, Code (#1) 9
2669	Washer, Lock 2, 3, 4, 7, 11	150043	Shoe, Secondary Clutch 6	154002	Bar, Code (#2) 9
3438	Washer, Flat 2, 3, 4	150044	Shoe, Primary Clutch 6	154003	Bar, Code (#3) 9
3598	Nut (6-40 Hex) 2, 4, 5, 7, 11	150089	Screw (4-40 x 1/2 Fil) 10	154004	Bar, Code (#4) 9
3599	Nut (4-40 Hex) 3, 8	150241	Spring 6	154005	Bar, Code (#5) 9
3640	Washer, Lock 3, 8, 10	150411	Washer, Flat 10	154008	Guide, Code Bar 9
3646	Washer, Lock 11	150923	Washer, Felt 5	154009	Plate, Front 5
3870	Spring 7	150966	Insulator (1-4) 2	154010	Bail, Transfer 5
7002	Washer, Flat 3, 7, 8, 9, 10	150990	Washer, Felt 4	154014	Post, Guide 5
8330	Washer, Flat 4	151060	Gear Set (60 WPM) 12	154015	Post 4
8449	Spacer (.094") 4	151075	Gear Set (75 WPM) 11	154018	Post, Locking Bail 5
34432	Washer, Flat 11	151100	Gear Set (100 WPM) 12	154019	Follower, Eccentric 6
42661	Spring 10	151113	Strip, Mounting 2, 3	154029	Wick, Felt 6
42823	Washer, Flat 6	151118	Plate, Spacing 2, 3	154030	Shaft, Signal Generator 6
44048	Washer, Flat 11	151126	Spacer (.250") 4	154032	Sleeve, Gear 6
45969	Screw (10-32 x 3/4 Flat) 11	151130	Pinion (14 T) 12	154033	Lever, Clutch Latch 7
49420	Spring 9	151131	Gear (96 T) 12	154034	Lever, Clutch Stop 7
49514	Nut (8-32 Hex) 11	151132	Pinion (17 T) 12	154036	Plate, Detent 5
55219	Screw (8-32 x 3/8 Fil) 11	151133	Gear (93 T) 12	154040	Lever, Transfer 5
70388	Spring 5	151134	Pinion (20 T) 12	154041	Post, Stop 5
70593	Screw, Thumb (6-40) 11	151135	Gear (84 T) 12	154042	Terminal 8
74755	Washer, Felt 7	151137	Gear Assembly, Intermediate 4	154043	Terminal 8
74805	Screw (10-32 x 3/4 Hex) 7	151146	Strap, Mounting 2, 3	154045	Screw (6-40 Spl) 8
76296	Spring 11	151152	Screw (4-40 x 3/16 Hex) 7, 8, 10	154046	Stud 7
76422	Spring 10	151171	Toggle, Contact 8	154047	Post, Spring 5
80581	Spring 5	151180	Link, Toggle 8	154053	Bail, Clutch Trip 7
82474	Terminal 3	151182	Washer, Insulating 8	154056	Bracket, Contact Box 8
82730	Screw, Thumb (10-32) 11	151228	Bracket w/Bearing 4	154068	Bracket, Right Guide 9
86304	Spring 8	151335	Stud 2	154069	Bracket, Left Guide 9
87398	Washer, Flat 10	151346	Screw (6-40 x 3/8 Fil) 2, 4	154070	Guide, Code Lever 9
88456	Washer, Felt 11	151397	Spring 10	154072	Bracket, Stop 9
89305	Screw (1/4-20 x 3/4 Hex) 11	151415	Block, Terminal 2	154076	Plate, Nut 3
90573	Spring 10	151416	Nut (6-40 Hex) 2	154083	Spacer, Cam 6
90679	Washer, Felt 4	151437	Stud 11	154084	Bearing 4
90791	Washer, Lock 8	151442	Screw (6-40 x 1/2 Hex) 3	154085	Plate 2, 3
91228	Strap (2-1/2" Braided) 11	151549	Post 11	154088	Plate, Nut 3
92527	Washer, Lock 11	151626	Terminal 3	154095	Eccentric, Contact Box 8
99207	Spacer (.219) 11	151630	Screw (6-40 x 1/4 Hex) 9	154101	Plate, Rear 7
100848	Screw (1/4-20 x 1 Hex) 11	151631	Screw (6-40 x 5/16 Hex) 4, 7	154102	Plate, Rear 4
104827	Bearing, Ball 4	151632	Screw (6-40 x 3/8 Hex) 3, 4, 8, 11	154105	Post, Transfer Bail 5
108355	Nut (1/4-20 Hex) 11	151657	Screw (6-40 x 1/4 Fil) 2, 11	154127	Nut (6-40 Hex) 4
108370	Washer, Felt 5	151658	Screw (6-40 x 5/16 Fil) 2	154129	Bar, Clutch Trip 9
110743	Washer, Lock 6, 7, 8, 10	151678	Screw, Pilot (1/4-32) 2, 3	154130	Box, Contact 8
111017	Screw (6-40 x 5/16 Fil) 2	151692	Screw (6-40 x 3/16 Fil) 10	154131	Cover, Contact 8
111767	Washer, Flat 4	151693	Screw (6-40 x 9/16 Fil) 4	154138	Washer, Felt 6
112626	Nut (10-32 Hex) 4, 7, 11	151712	Button, Pivot 4	154140	Bail, Locking 5
115122	Washer, Felt 4, 7	151715	Spring 10	154154	Cam, Signal Generator 6
117416	Post 7	151722	Screw (6-40 x 3/16 Hex) 5, 9, 10	154156	Grommet, Rubber 3
117806	Bracket, Spring 11	151723	Screw (10-32 x 3/8 Hex) 2, 3	154164	Frame Assembly 7
117808	Link 11	151724	Screw (10-32 x 5/8 Hex) 4	154165	Box Assembly, Contact 8
117825	Post 11	151725	Screw (10-32 x 3/4 Fil) 4	154166	Suppressor, Arc 8
119648	Ring, Retaining 5	151728	Spring 6	154173	Plate 3
119649	Ring, Retaining 10	151732	Screw (4-40 x 11/32 Fil) 11	154178	Spring 5
119651	Ring, Retaining 4, 5	151737	Screw (4-40 x 11/64 Hex) 6, 10	154189	Insulator 8
119652	Ring, Retaining 7	151820	Spring, Contact 8	154191	Spring 4
120824	Washer, Felt 6	151880	Nut (4-40 Hex) 8, 10	154194	Base 8
120870	Wick, Felt 5	152000	Base 2	154199	Shim (.005") 3
		152045	Guard, Gear 2, 3	154201	Shim (.014") 3
		152464	Insulator (.062") 3		

## NUMERICAL INDEX (Continued)

Part Number	Description and Page Number	Part Number	Description and Page Number	Part Number	Description and Page Number
154215	Spring 4	159667	Gear Set (67 WPM) 12	165908	Gear (21 T) 4
154217	Wick, Leather 5	159668	Pinion (20 T) 12	165909	Cable Assembly 3
154240	Bail, Code Bar 4	159669	Gear (70 T) 12	165910	Gear Assembly, Inter- mediate 4
154241	Stud 4	159675	Gear Set (75 WPM) 12	170324	Bracket, Front 9
154662	Spacer 4	159700	Gear Set (100 WPM) 12	170385	Frame w/Bushing 7
154663	Shaft 4	161293	Gear Set (60 WPM) 12	170386	Guide, Transfer Lever 5
154694	Disk, Clutch Cam 6	161294	Gear Set (75 WPM) 12	170391	Guide, Transfer Lever 5
155750	Sleeve, Insulating (3/32 ID x 1/2" Lg) 10	161295	Gear Set (100 WPM) 12	173028	Post, Spring 4, 10
156503	Wick, Felt 6	161301	Post 12	173029	Lever, Latch 10
156509	Washer, Flat 5	161346	Washer, Felt 5	173095	Link 10
156516	Latch 5	162333	Stud, Locating 2, 3	173096	Stud, Eccentric 4, 10
156630	Washer, Felt 5	163440	Gear (48 T) 4	173878	Plate, Base 11
156644	Link, Drive 8	163646	Rail, Base Mounting 11	173915	Block, Mounting 11
156663	Insulator 8	164138	Stud 4, 10	174438	Screw (1/4-20 Spl) 11
157171	Shaft, Intermediate 4	164142	Bracket 10	176304	Bracket 10
157300	Base 2	164143	Plate, Mounting 10	194925	Pinion (13 T) 12
158268	Latch w/Hub 4	164144	Plate, Side 10	194926	Gear (81 T) 12
159278	Pinion (14 T) 12	164145	Pivot, Lever 10	194927	Gear Set (67 WPM) 12
159279	Gear (96 T) 12	164146	Lever, Stop 10	195186	Screw (4-40 x 7/8 Hex) 8
159281	Pinion (17 T) 12	164148	Spacer, Stop Arm 10	305104	Slide Assembly, Left 11
159282	Gear (93 T) 12	164151	Lever, Detent 10	305105	Slide Assembly, Right 11
159284	Pinion (20 T) 12	164154	Lever, Sensing 10	305106**	Tray 11
159285	Gear (84 T) 12	164155	Yoke, Magnet 10	305107	Handle, Sliding Tray 11
159287	Retainer, Pinion 12	164156	Armature 10	305108	Post, Guide 11
159327	Washer, Flat 4	164157	Shaft 10	305109**	Plate, Mounting 11
159334	Washer, Insulating 4	164158	Latch 10	305113	Bracket, Left Adapter 11
159660	Gear Set (60 WPM) 12	164160	Link 10	305114	Slide, Left Panel 11
159661	Pinion (10 T) 12	164161	Drum Message 10	305115	Slide, Left 11
159662	Gear (57 T) 12	164162	Ring, "O" 10	305116	Slide, Right 11
159663	Pinion (15 T) 12	164163	Blade, Code 10	305117	Slide, Right Panel 11
159664	Gear (78 T) 12	164164	Blade, Stop 10	305118	Bracket, Right Adapter 11
159665	Pinion (14 T) 12	164165	Plate, Drive 10	305129	Arm, Latch 11
159666	Gear (64 T) 12	164166	Pawl, Stepping 10		
		164169	Stud, Eccentric 10		

\*\* Refer to Page 1 for Finish Suffix