

COVER BASE (DAB), COVER (DARC), CABINET (DAC)  
AND PAPER HANDLING FOR  
"DATASPEED®" PRINTER (RECEIVE-ONLY)  
PARTS

CONTENTS

FIGURE		PAGE
1	Cover Base	2
2	Cover With Rear Lid and Paper Guide	3
3	Cover Front and Front Lid	4
4	Cover Pads and Fluorescent Lamp	5
5	Cabinet Frame	6
6	Cabinet Front Door and Side Panels	7
7	Cabinet Rear Door and Filter	8
8	325728 Plate Assembly	9
9	Cabinet Plate and Mounting Brackets	10
10	325800** Fan Housing Assembly	11
11	Cable Roller Brackets	12
12	331160** Blank Panel Assembly	13
13	331140** Shelf Assembly	14
14	Cabinet Top and Latch Mechanism	15
15	330020** Paper Unwinder Assembly	16
16	330020** Paper Unwinder Assembly	17
17	Paper Winder (DAPW) Left Arm Mechanism	18
18	Paper Winder (DAPW) Right Arm Mechanism	19
19	Paper Winder (DAPW) Motor and Slack Rod	20
	Numerical Index	21

Notes:

- For Maintenance Tools, refer to Section 570-005-800
- When ordering parts from this section prefix each number with letters TP
- This section was formerly designated 592-820-801, but this number is now cancelled. Since this issue of Section 578-500-801 is a revision of Section 592-820-801, Issue 2, it is designated Issue 3.

PAINT FINISH CHART (For parts and assemblies requiring paint finish)	
Color	Smooth
Light Gray	EJ
Dark Covert Gray	FC
The double asterisk (**) denotes a painted part. Suffix to be applied following the part number.	

The part identification information contained in the following change notices have been incorporated in this issue.

TCN's #1363

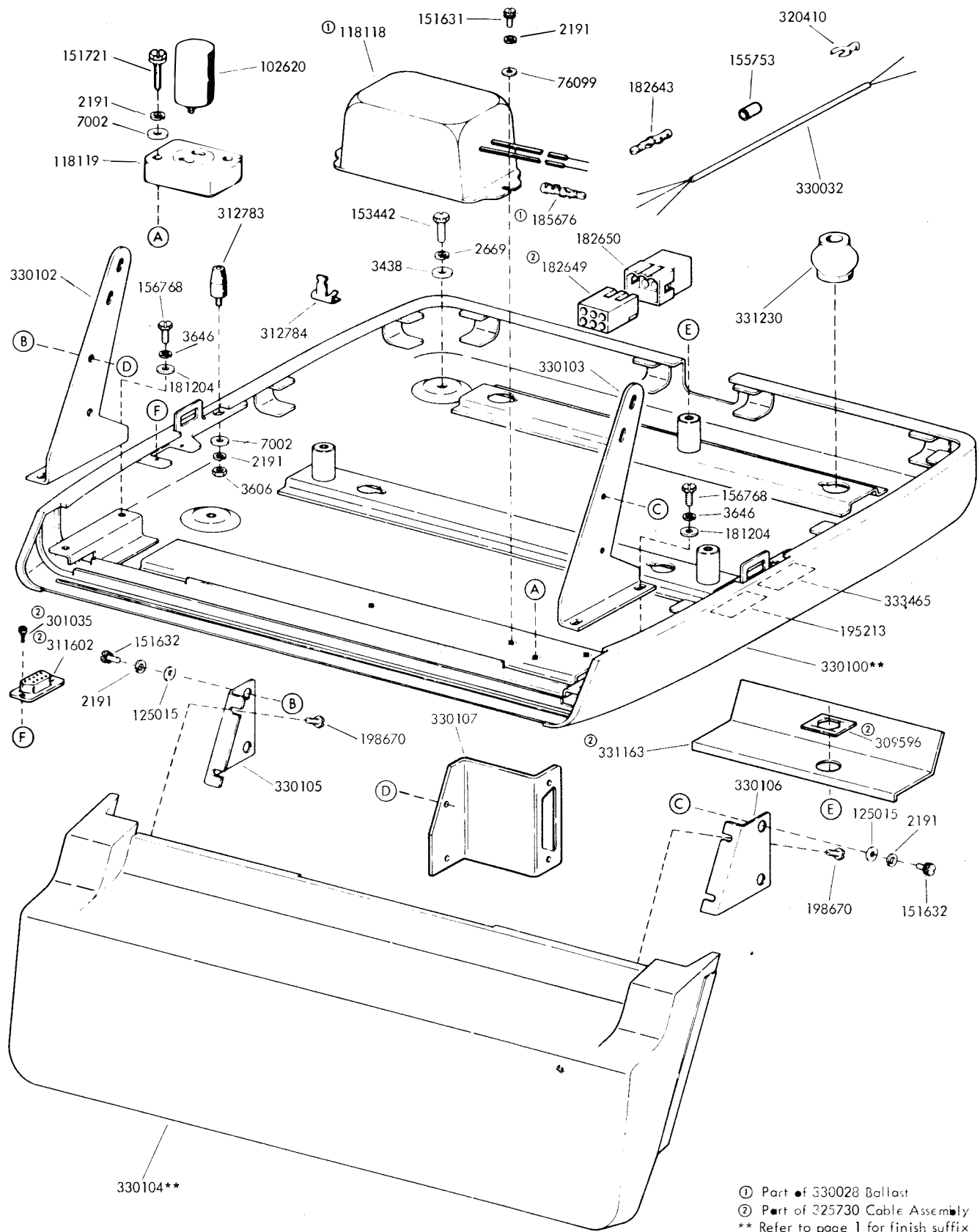


FIGURE 1. COVER BASE

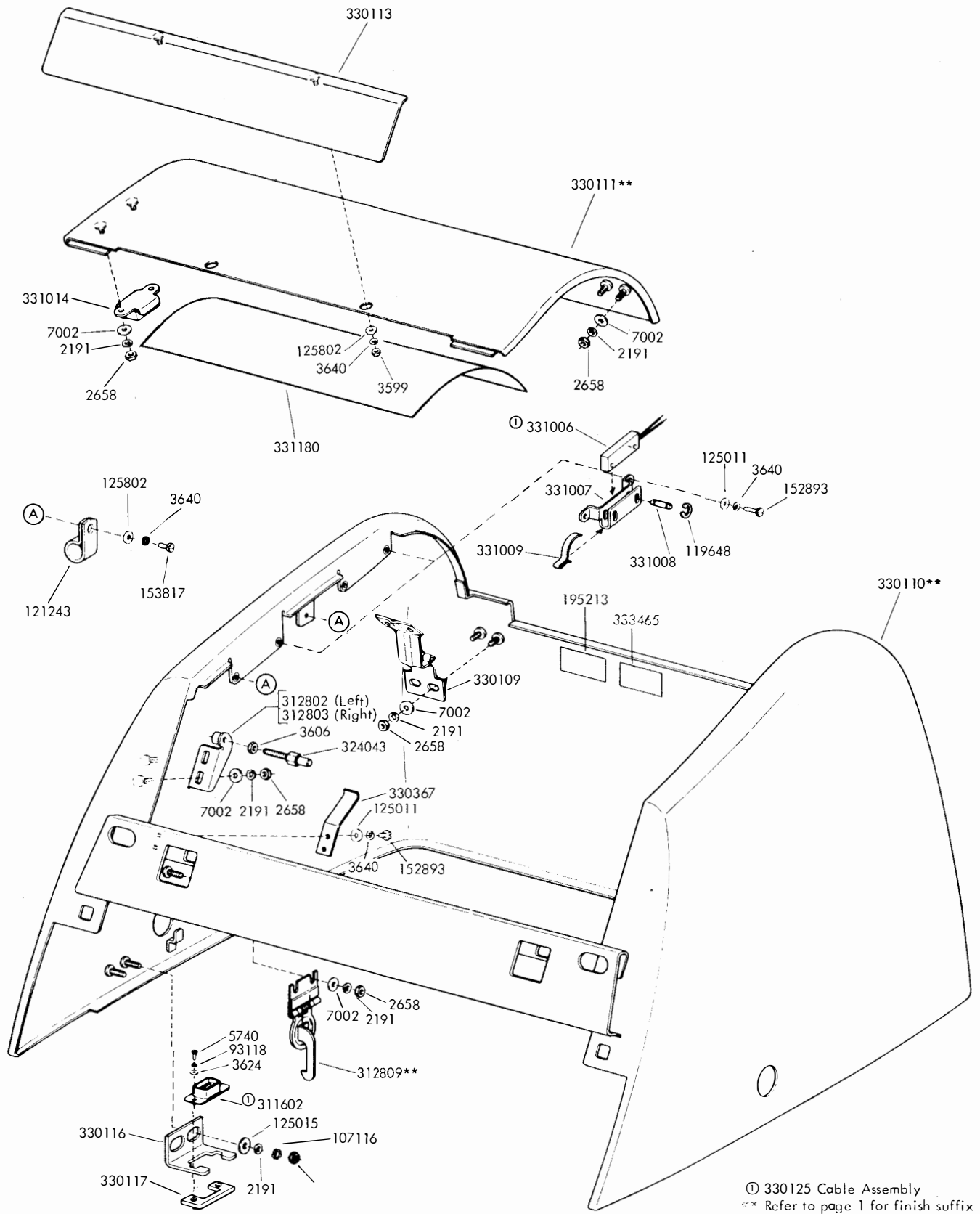
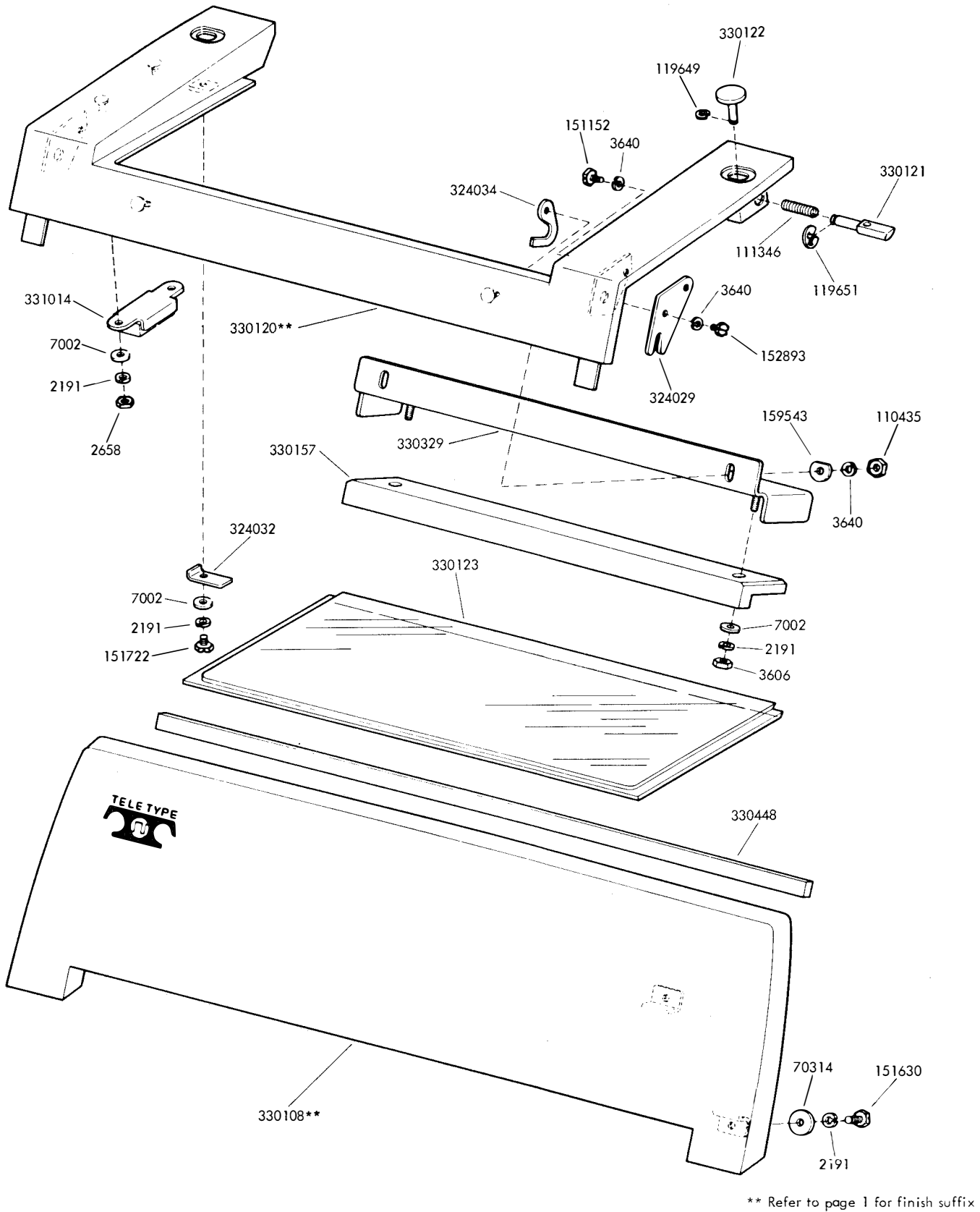


FIGURE 2. COVER WITH REAR LID AND PAPER GUIDE



\*\* Refer to page 1 for finish suffix

FIGURE 3. COVER FRONT AND FRONT LID

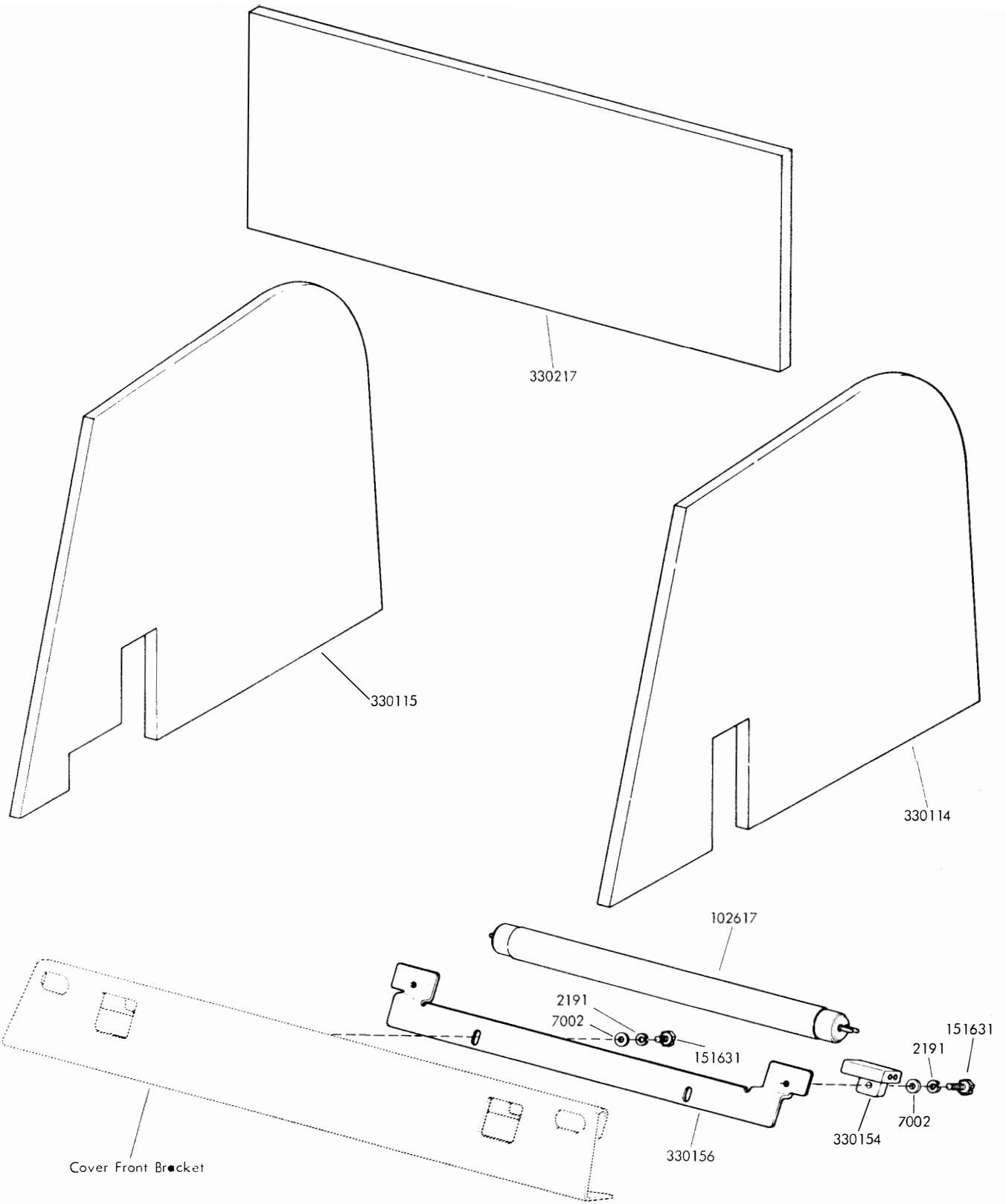
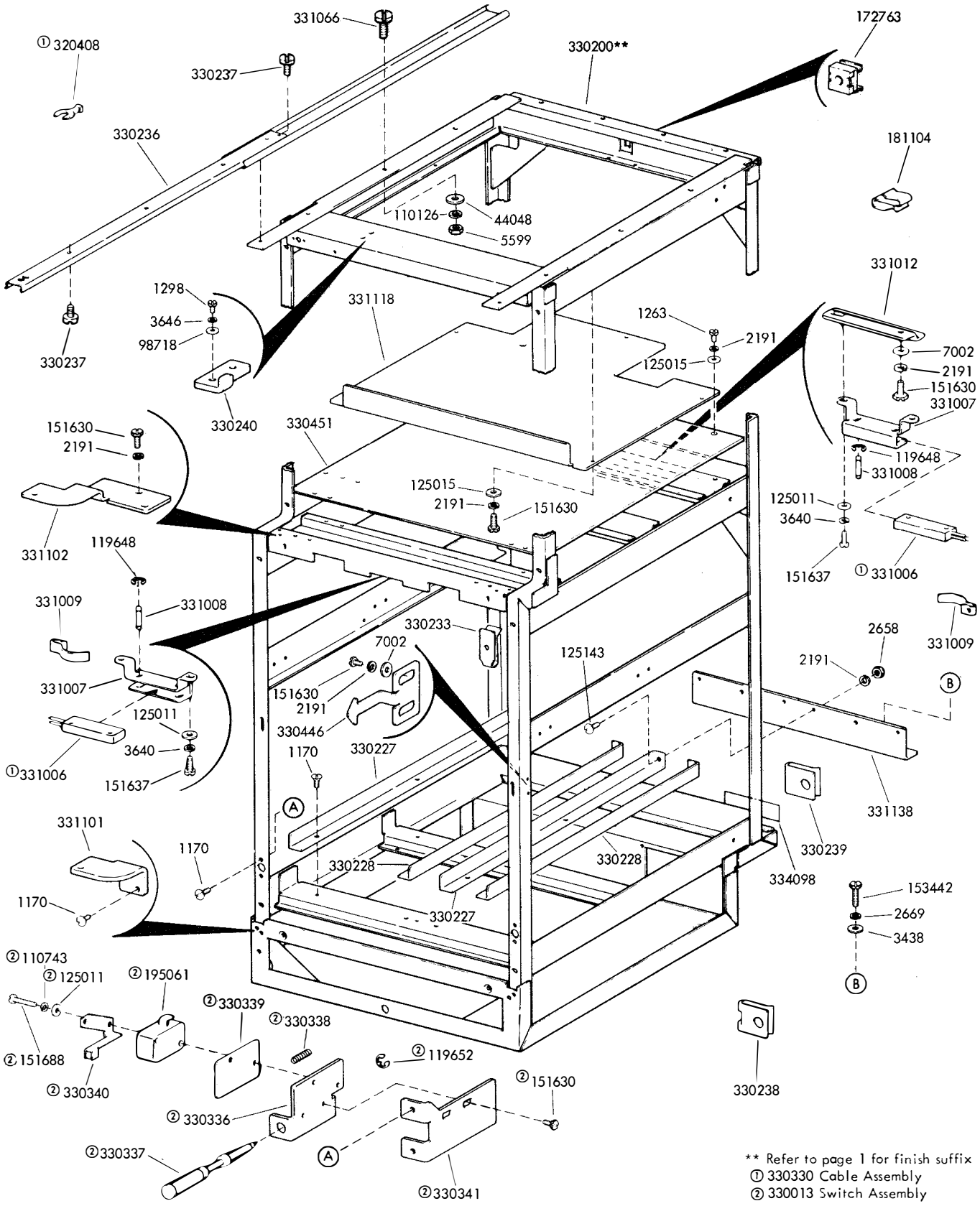
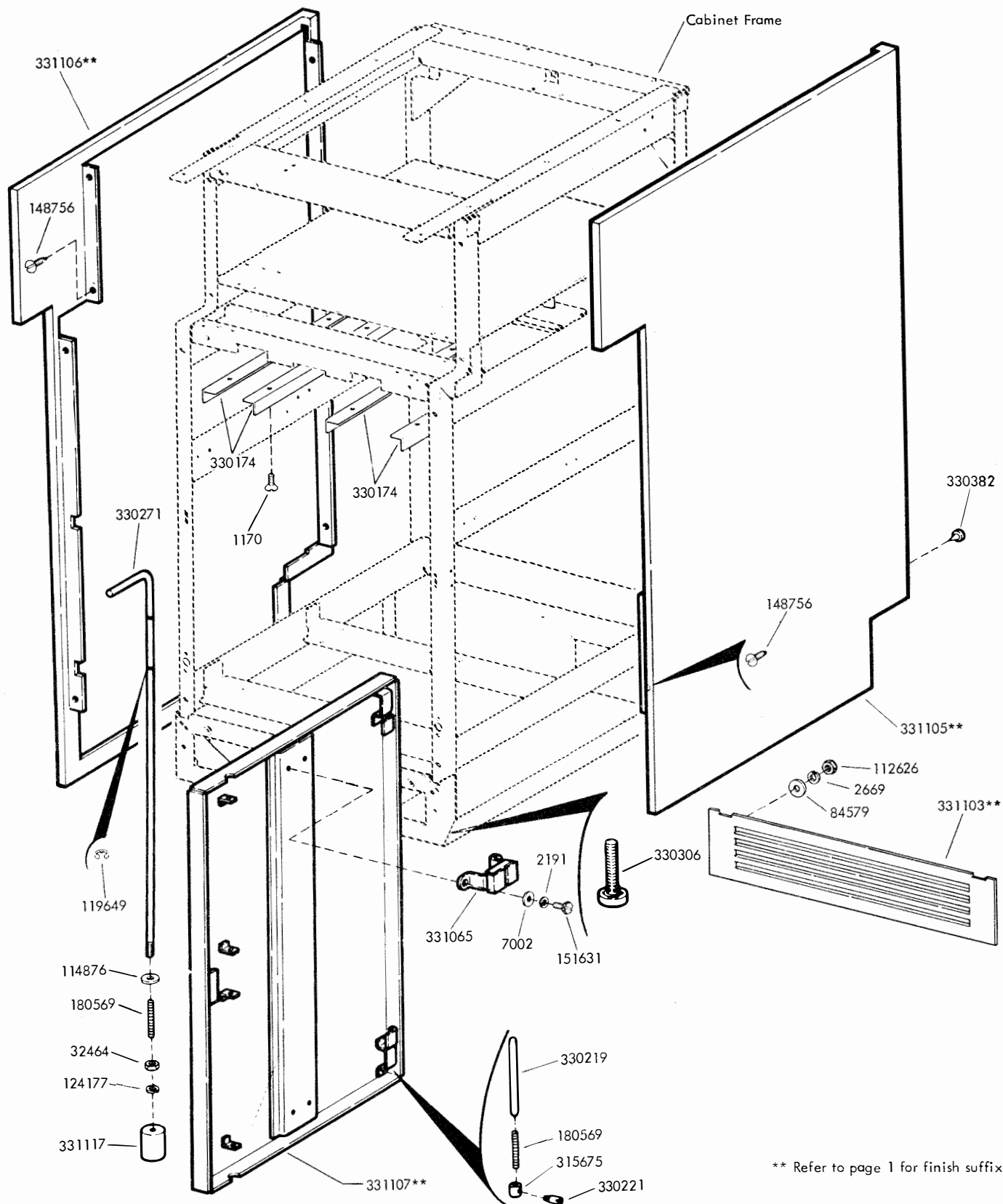


FIGURE 4. COVER PADS AND FLUORESCENT LAMP



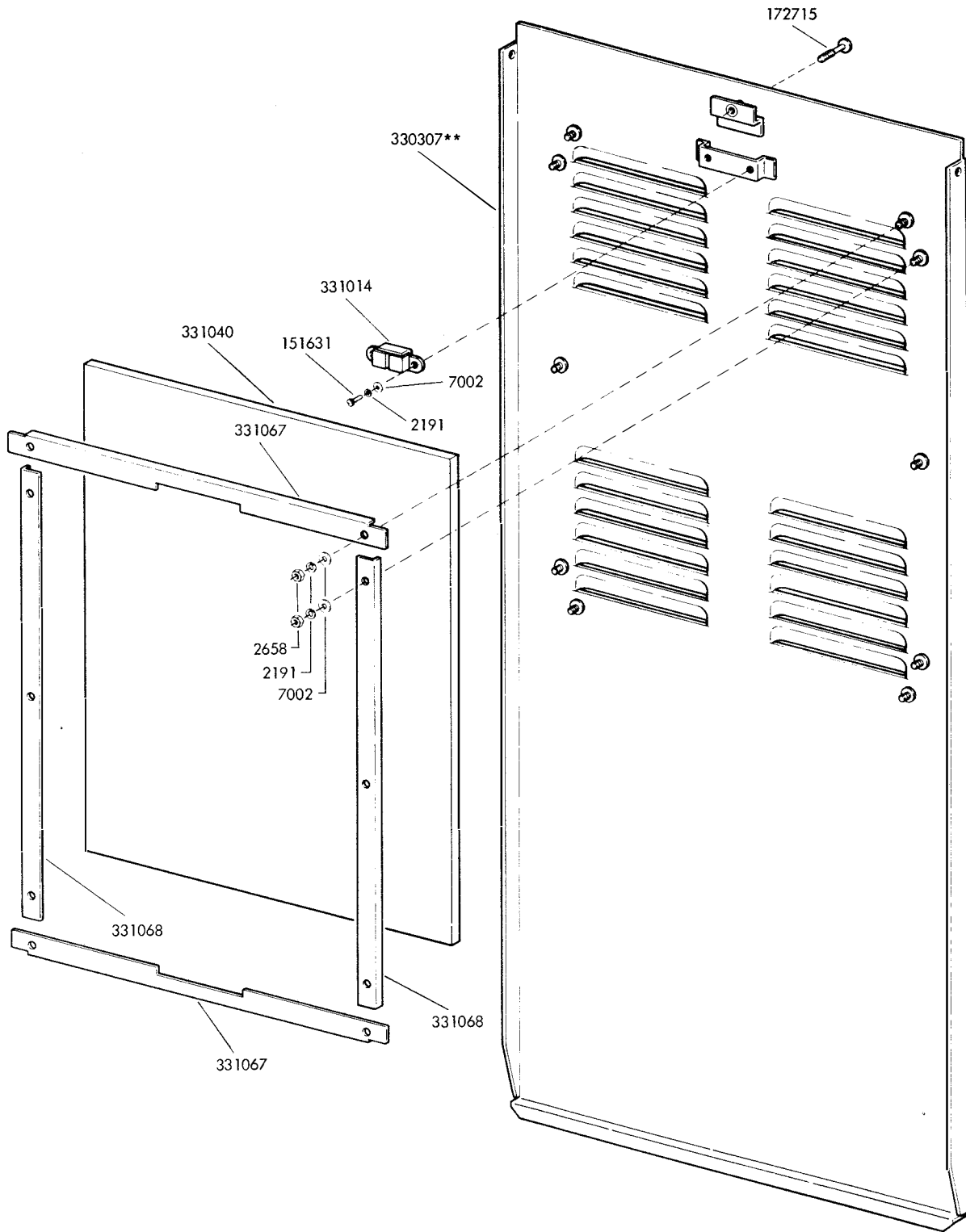
\*\* Refer to page 1 for finish suffix  
 ① 330330 Cable Assembly  
 ② 330013 Switch Assembly

FIGURE 5. CABINET FRAME



\*\* Refer to page 1 for finish suffix

FIGURE 6. CABINET FRONT DOOR AND SIDE PANELS



\*\* Refer to page 1 for finish suffix

FIGURE 7. CABINET REAR DOOR AND FILTER



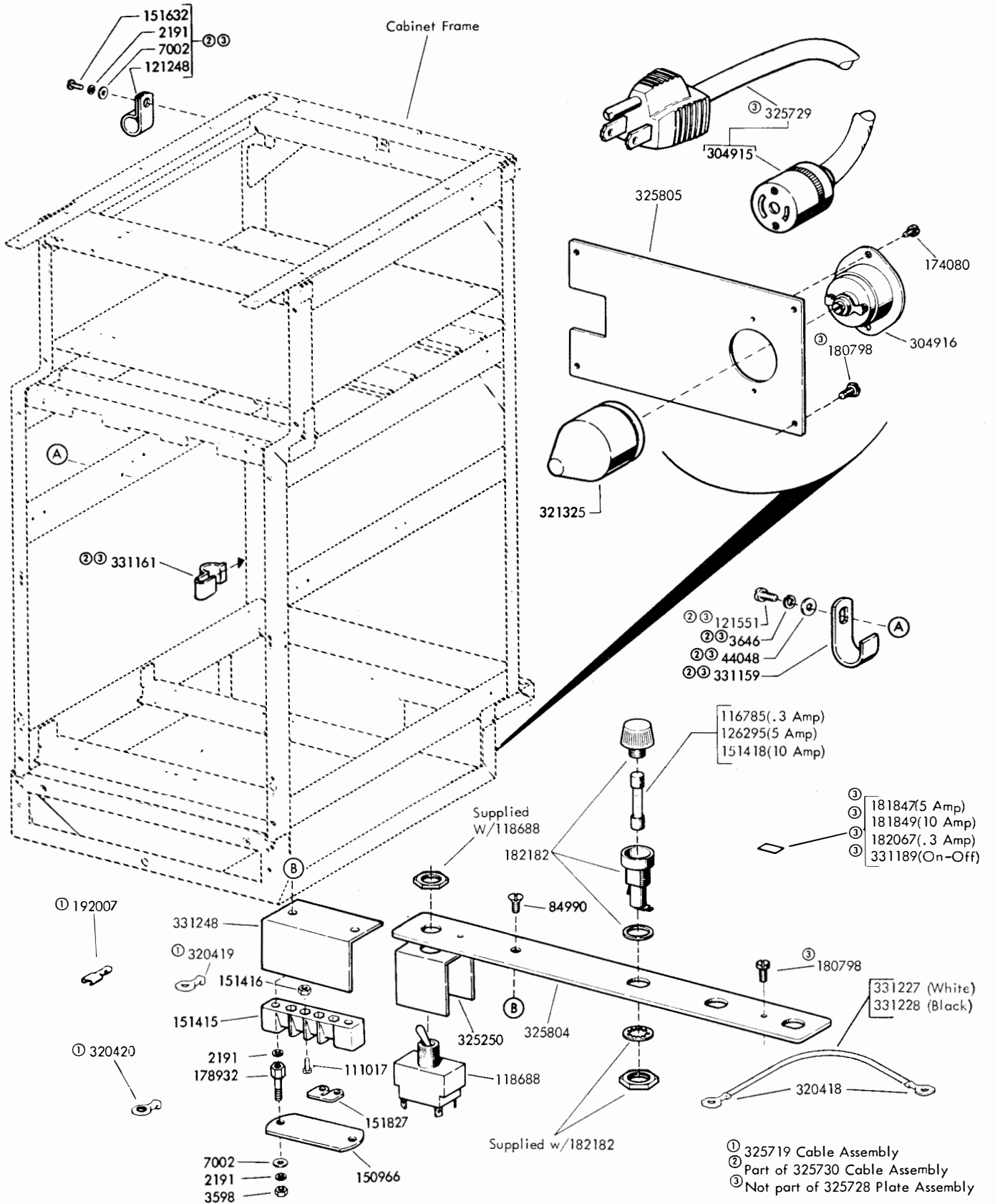


FIGURE 8. 325728 PLATE ASSEMBLY

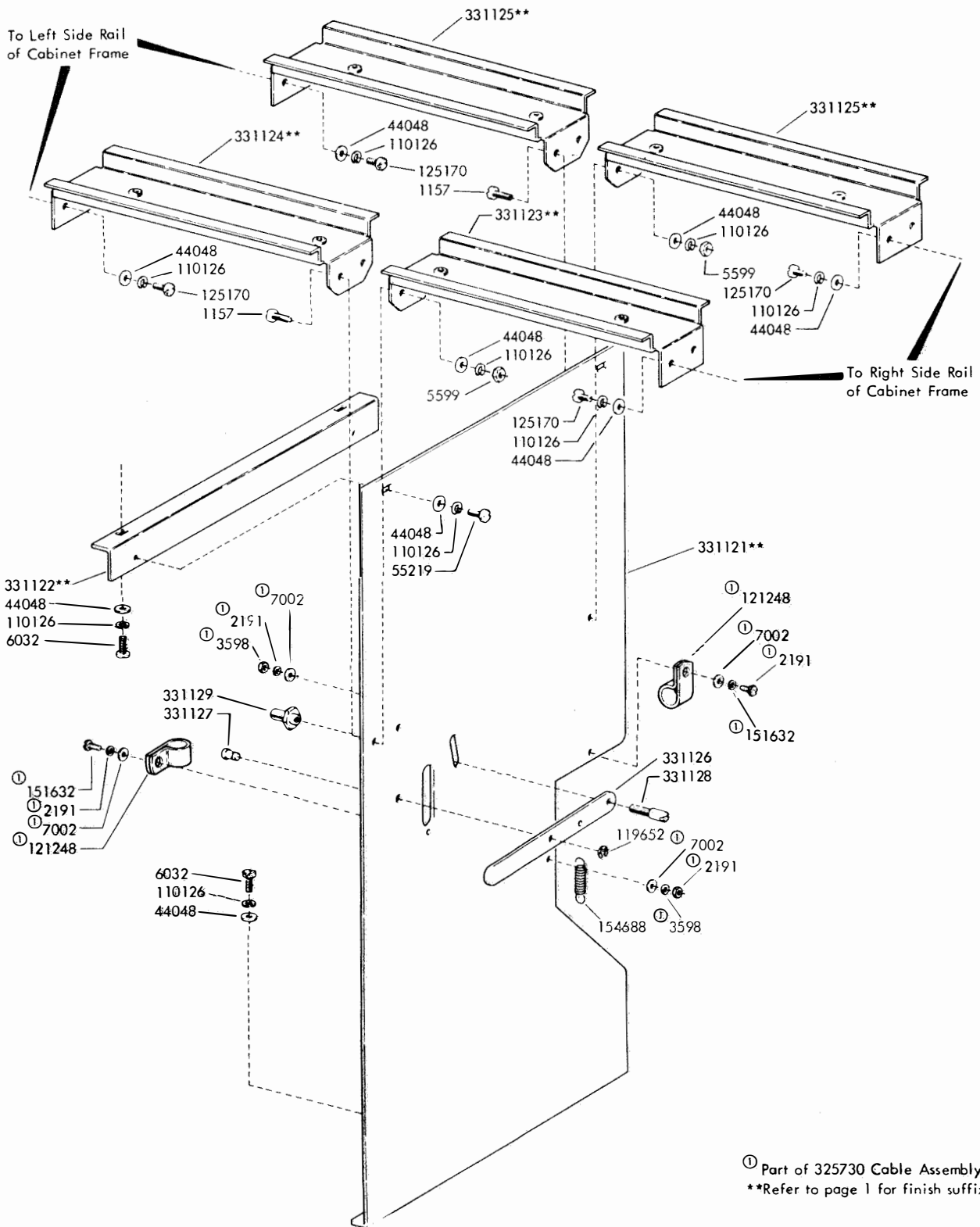
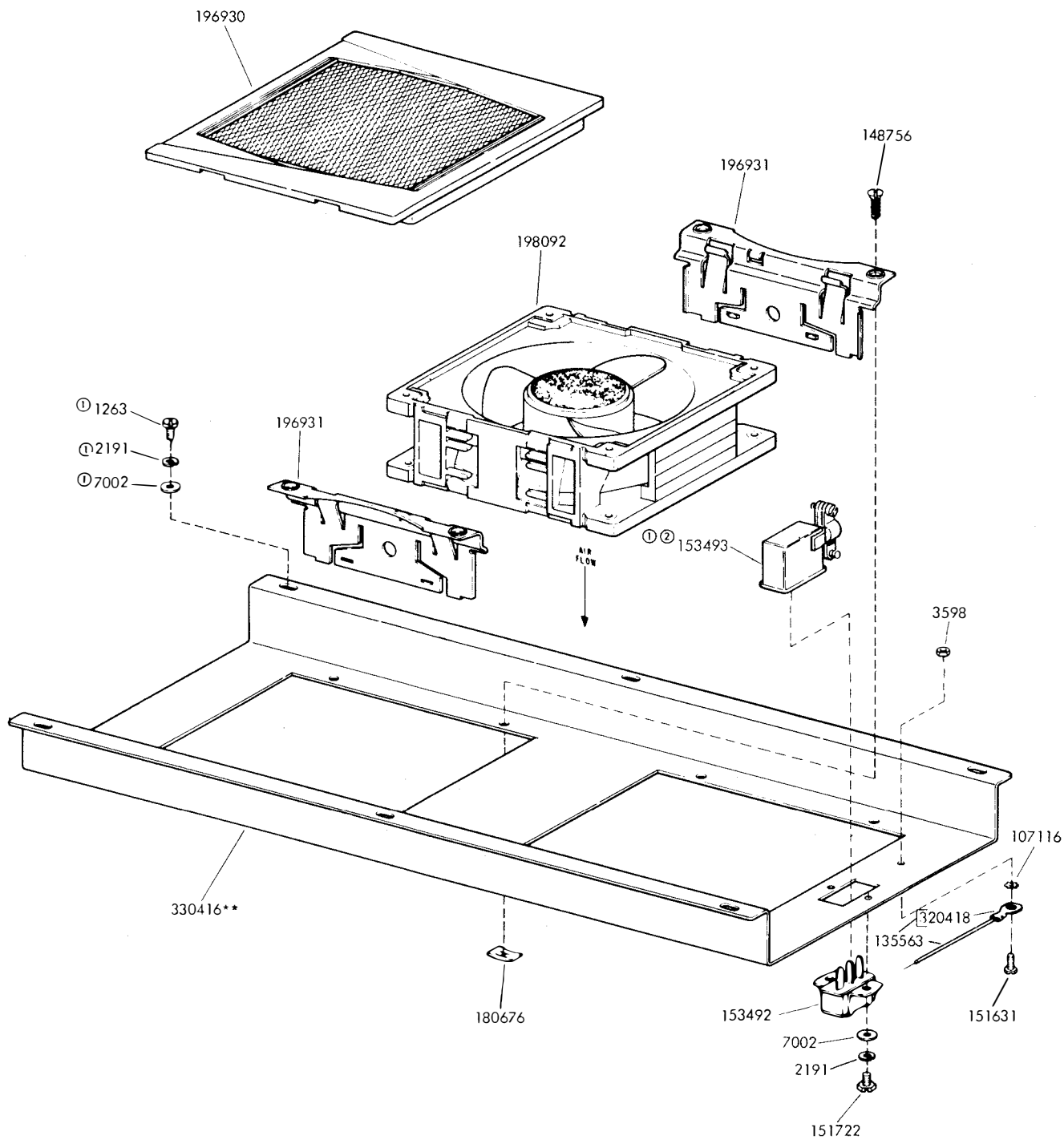


FIGURE 9. CABINET PLATE AND MOUNTING BRACKETS



\*\*Refer to page 1 for finish suffix  
 ① Not Part of 325800\*\* Assembly  
 ② Part of 325730 Cable Assembly

FIGURE 10. 325800\*\* FAN HOUSING ASSEMBLY

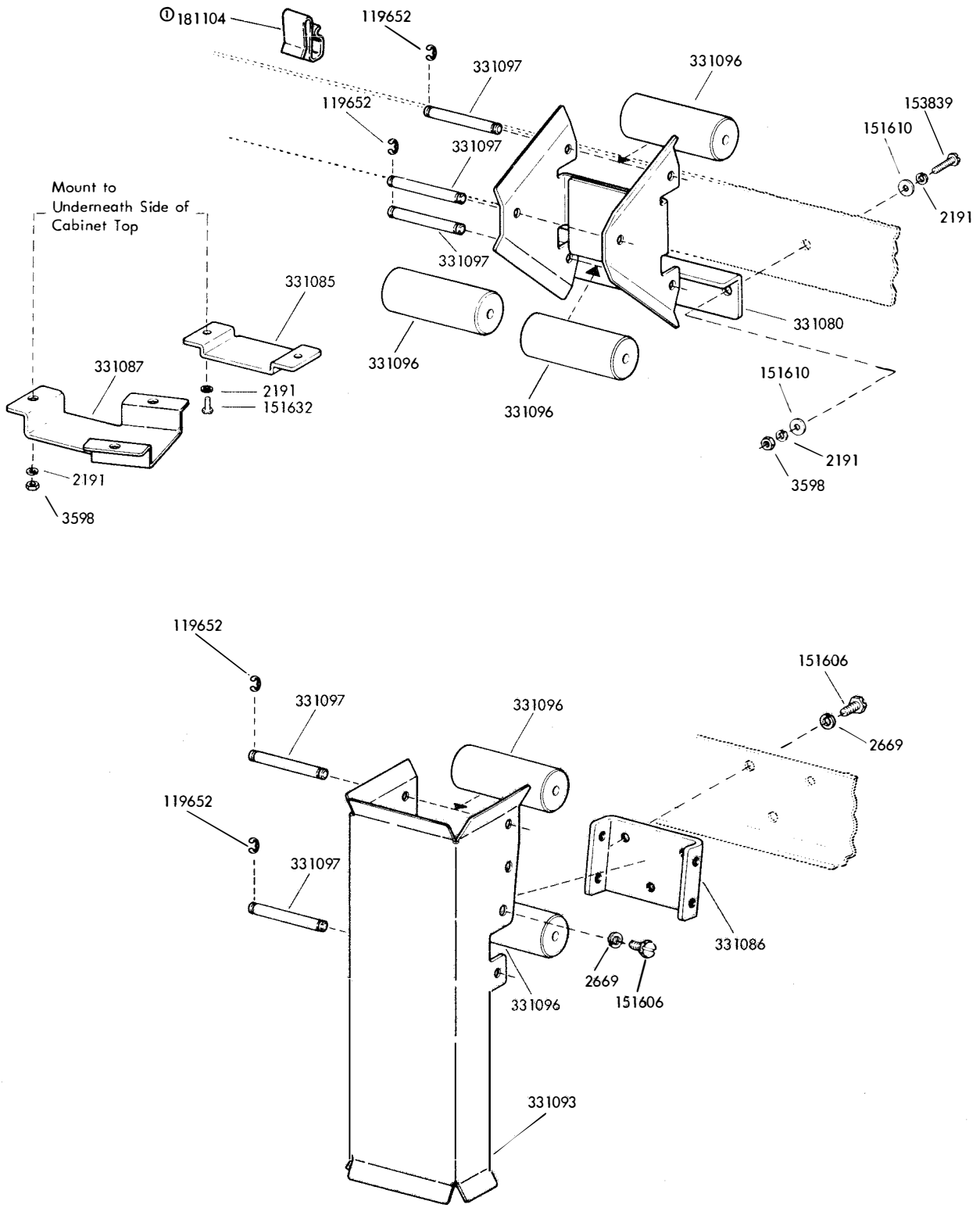


FIGURE 11. CABLE ROLLER BRACKETS

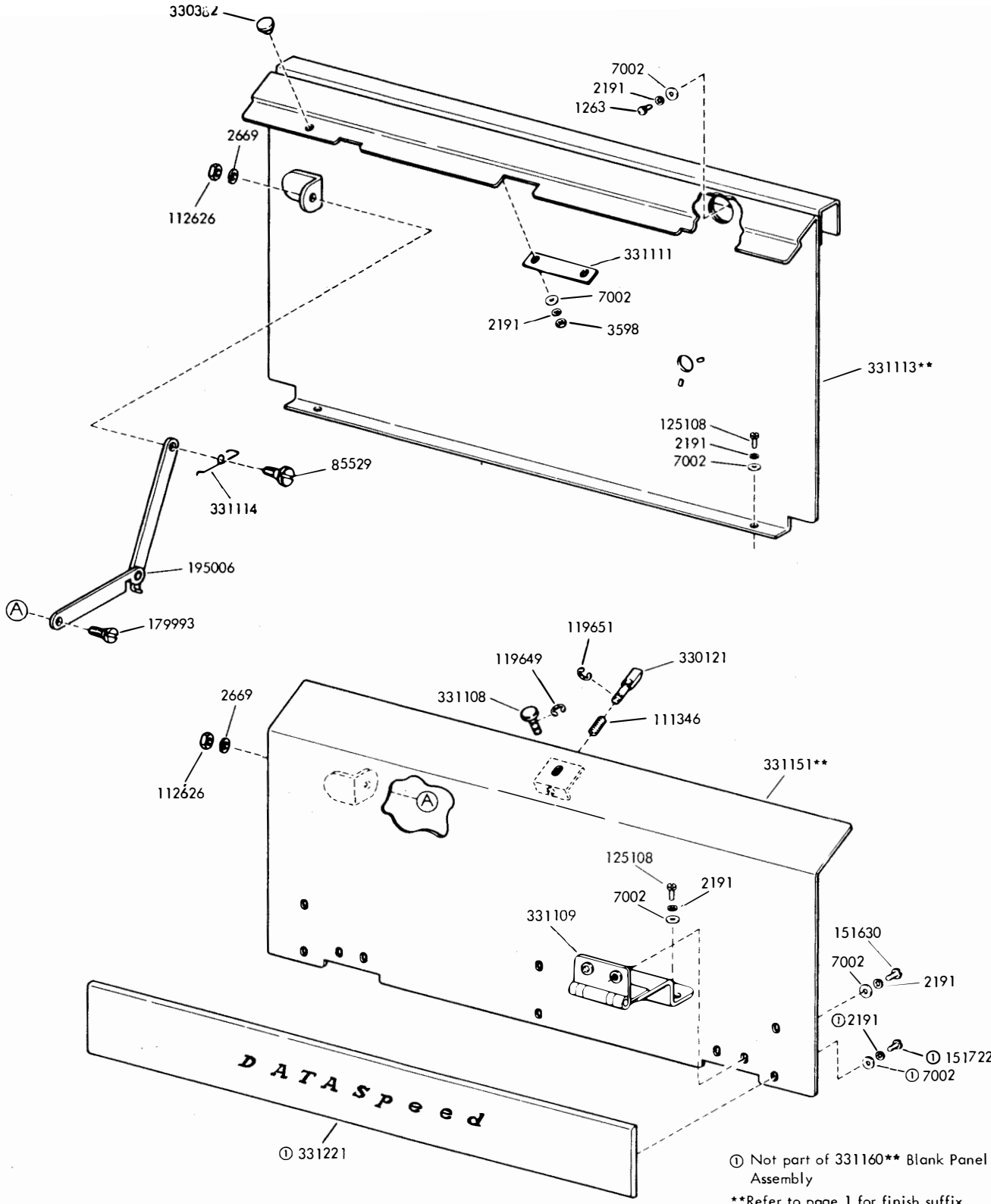
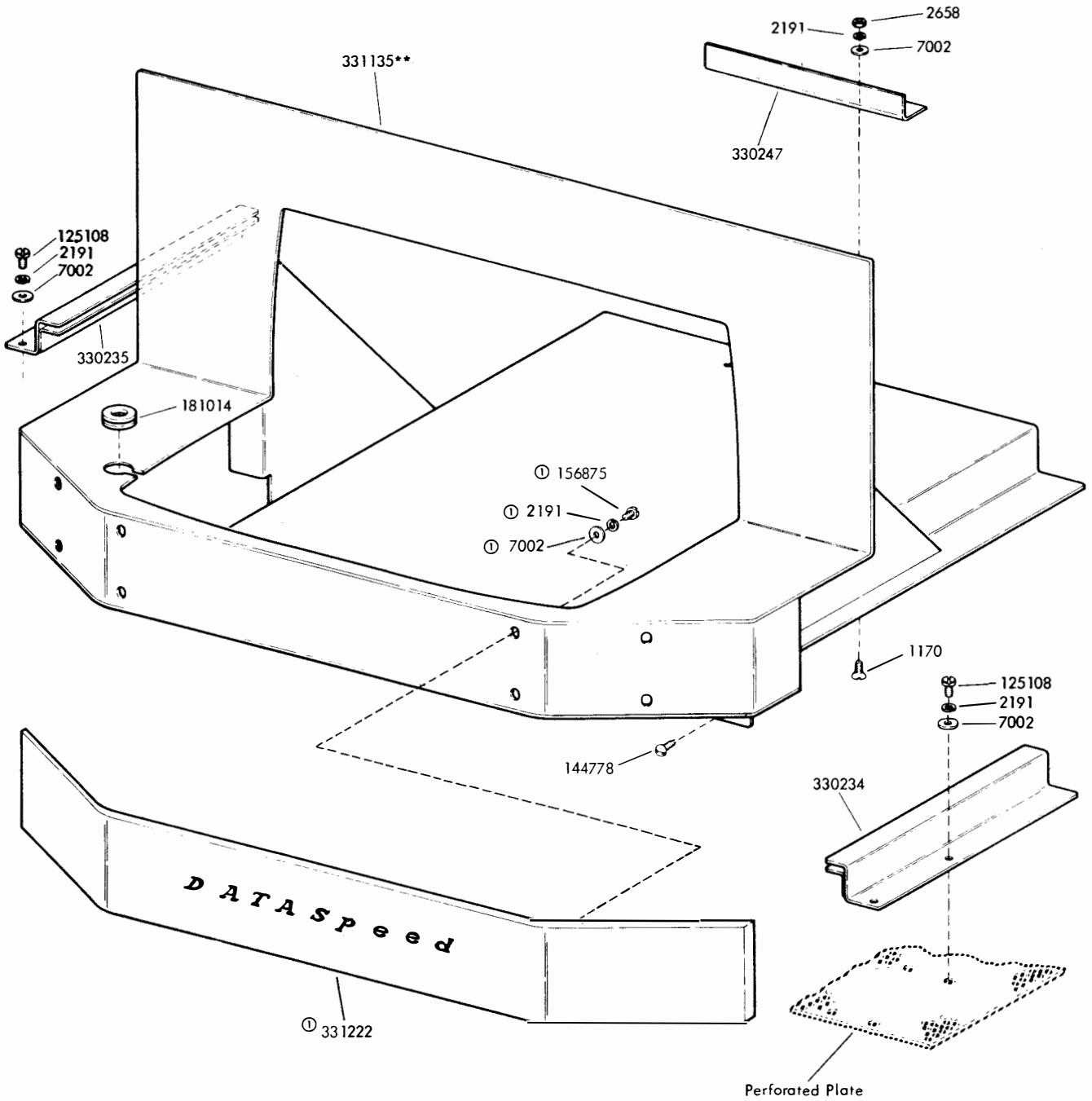


FIGURE 12. 331160\*\* BLANK PANEL ASSEMBLY



① Not part of 331140\*\* Shelf Assembly

\*\* Refer to page 1 for finish suffix

FIGURE 13. 331140\*\* SHELF ASSEMBLY (202 DATA SET)

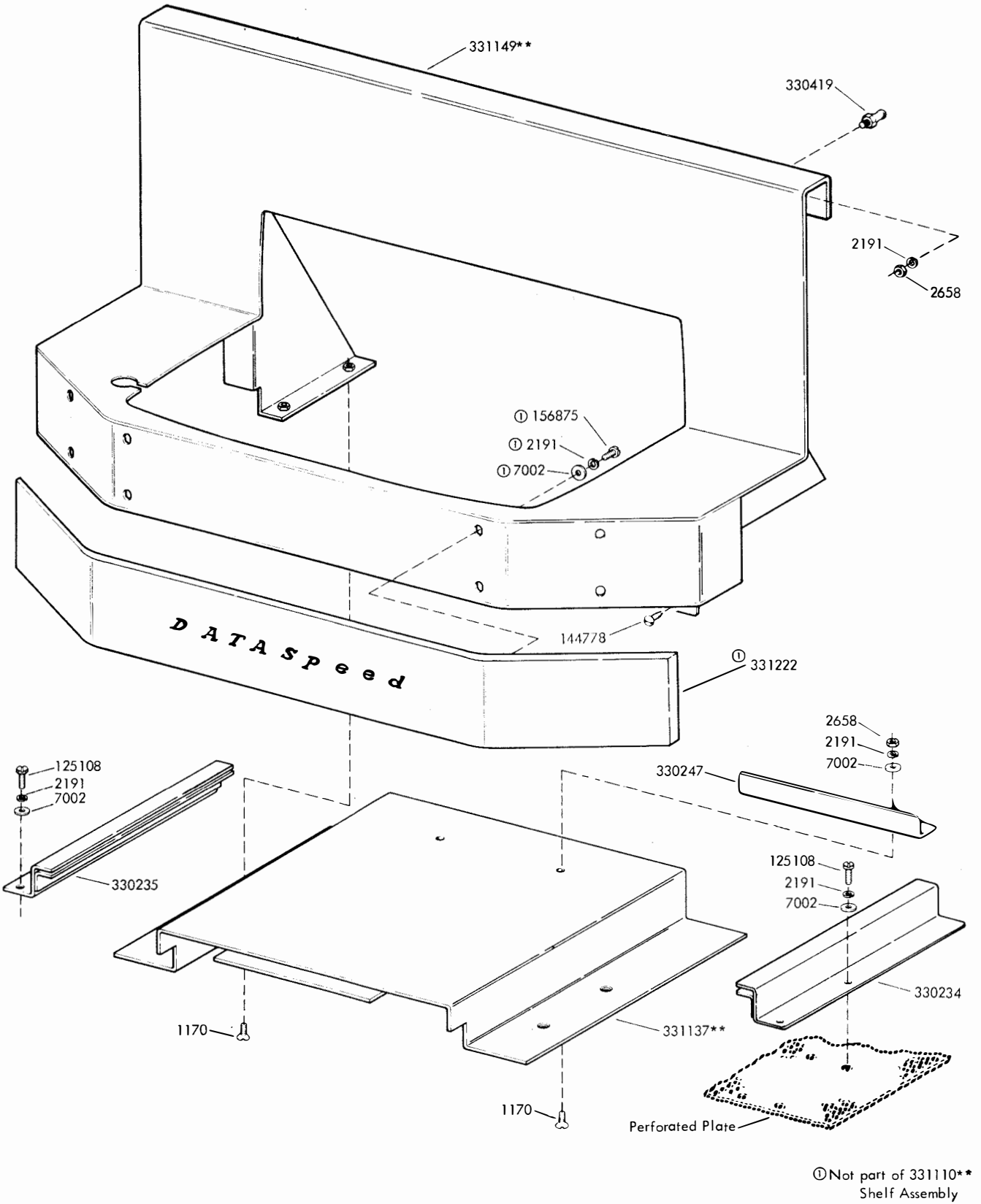
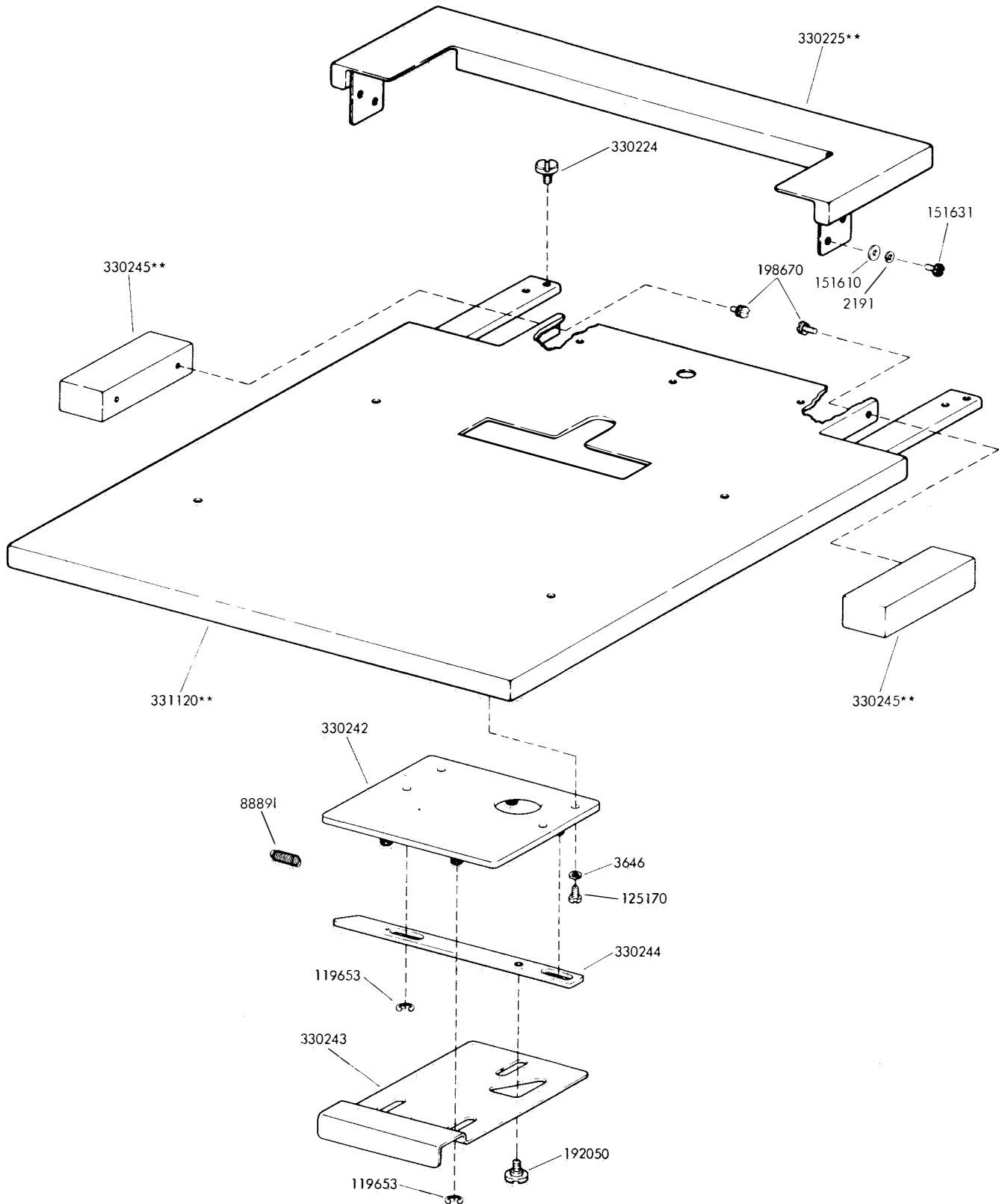


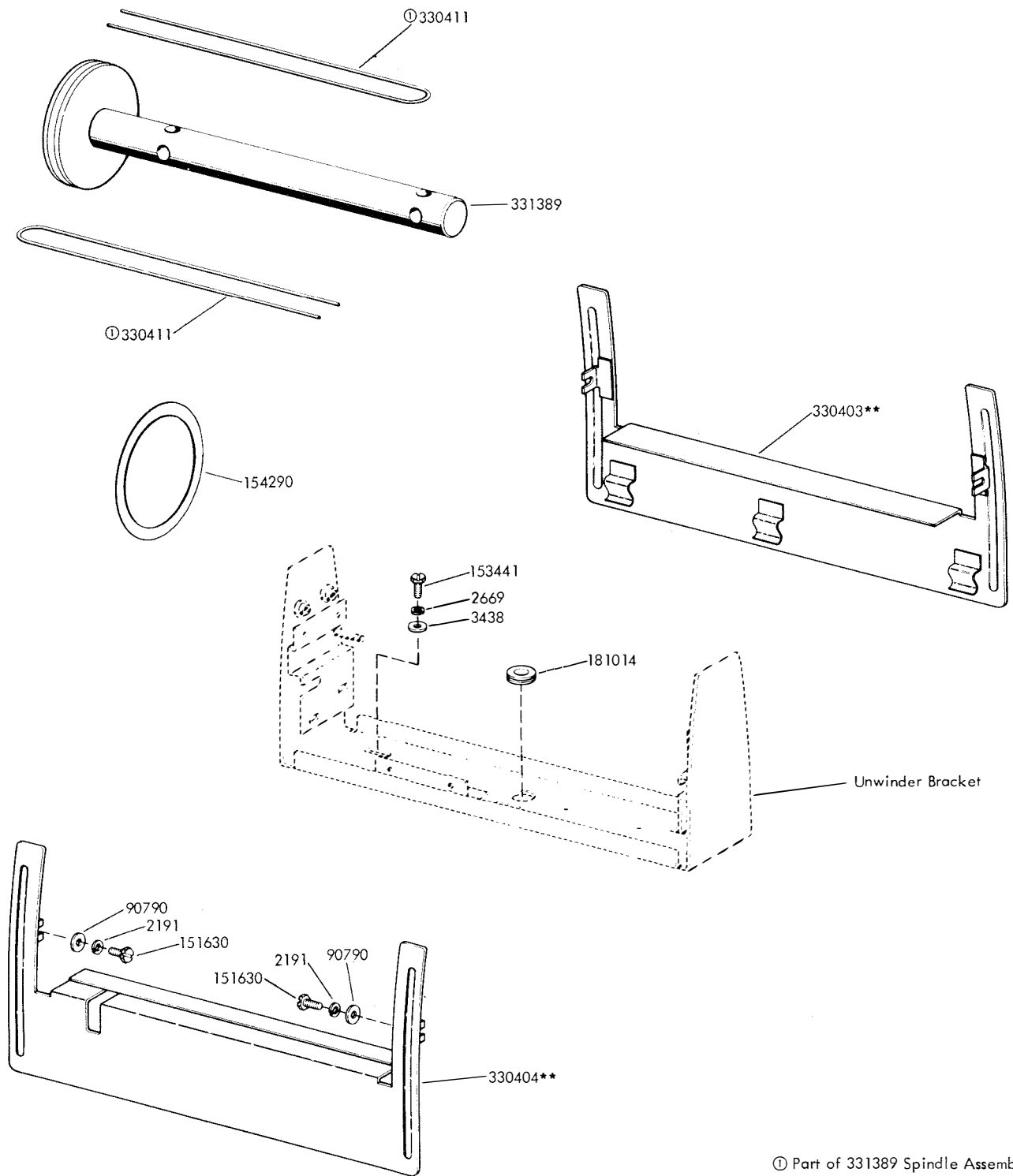
FIGURE 14. 331110\*\* SHELF ASSEMBLY (804 DATA SET)



\*\* Refer to page 1 for finish suffix

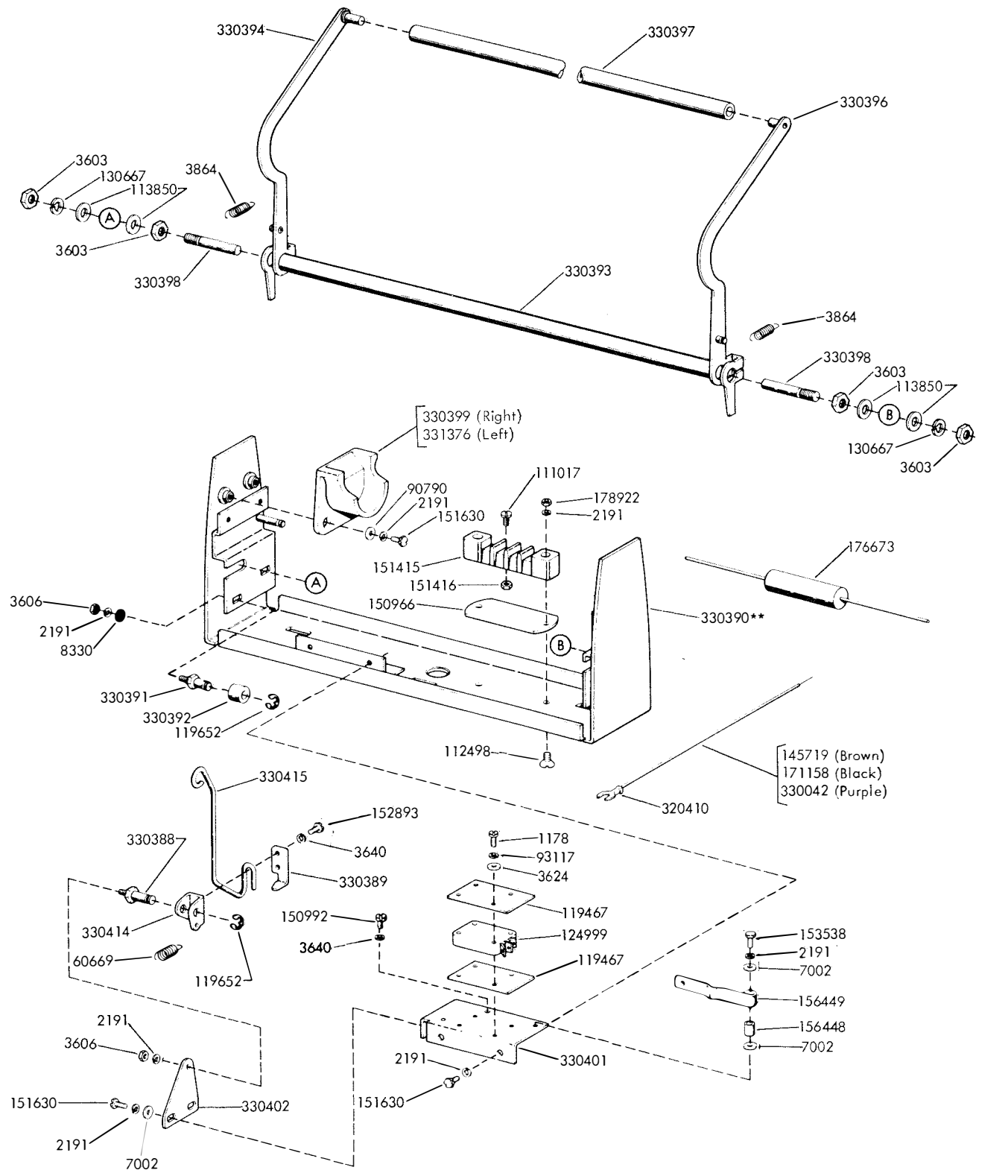
FIGURE 15. CABINET TOP AND LATCH MECHANISM





① Part of 331389 Spindle Assembly  
 \*\*Refer to page 1 for finish suffix

FIGURE 16. 330020\*\* PAPER UNWINDER ASSEMBLY



\*\* Refer to page 1 for finish suffix

FIGURE 17. 330020\*\* PAPER UNWINDER ASSEMBLY

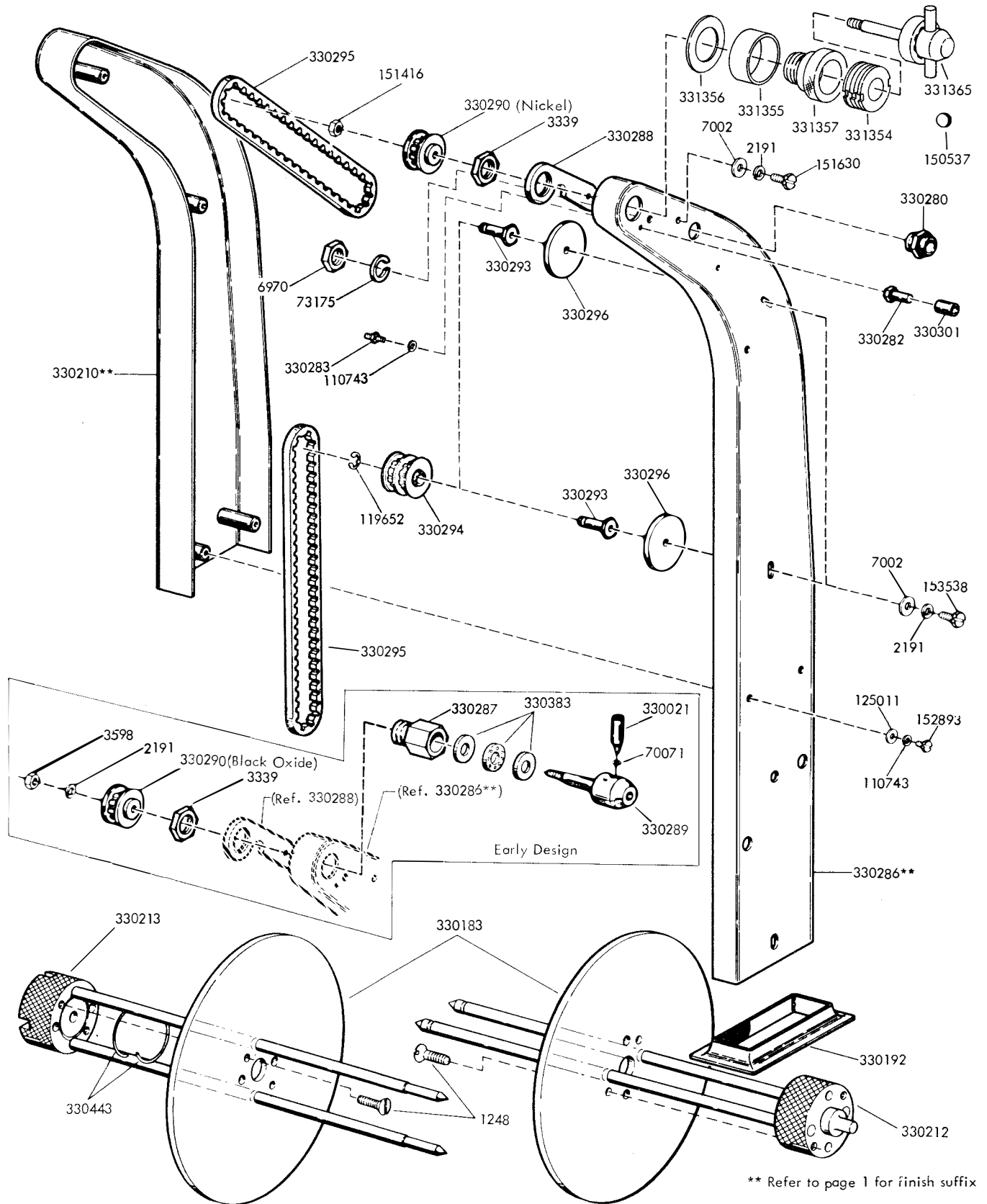
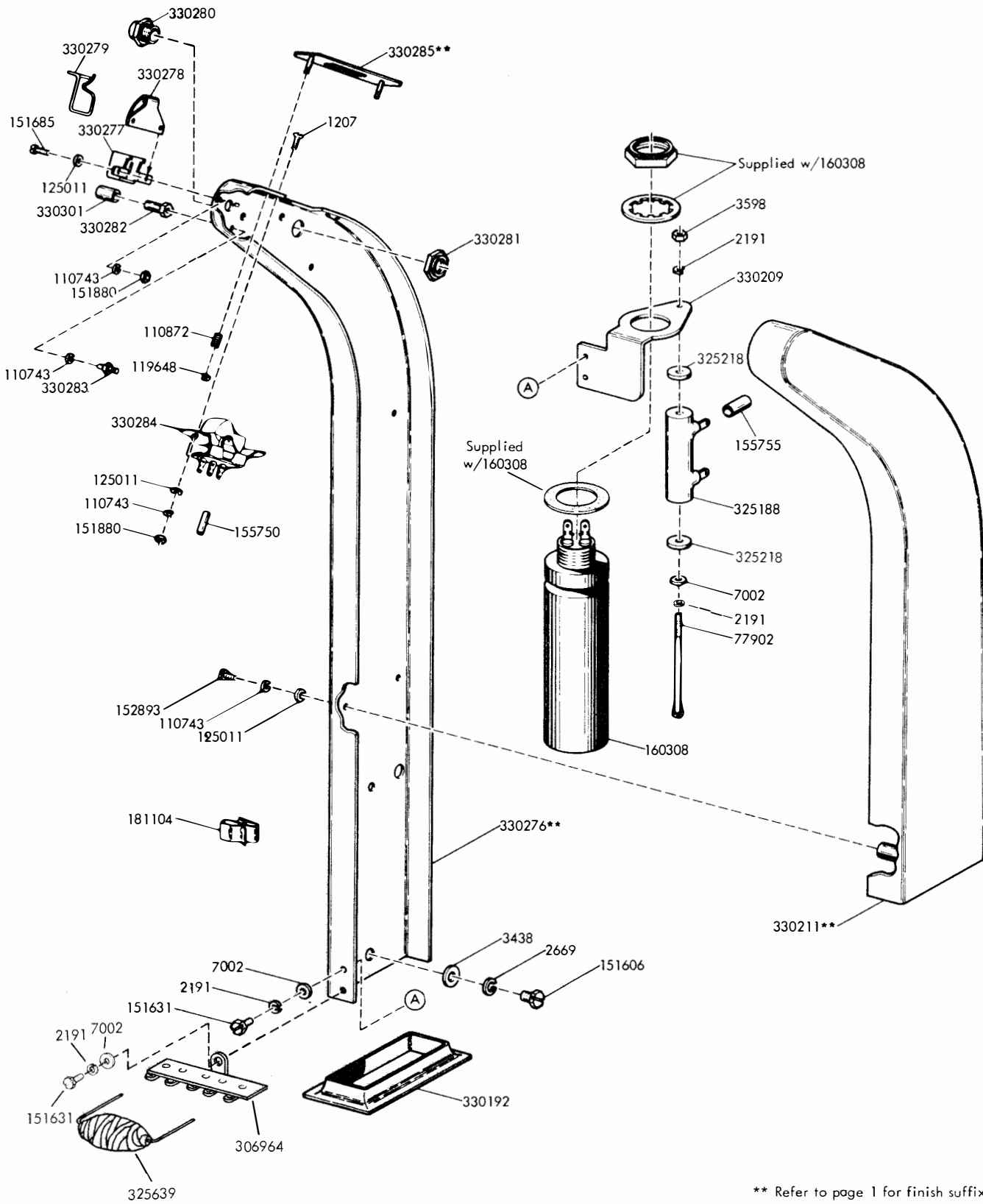
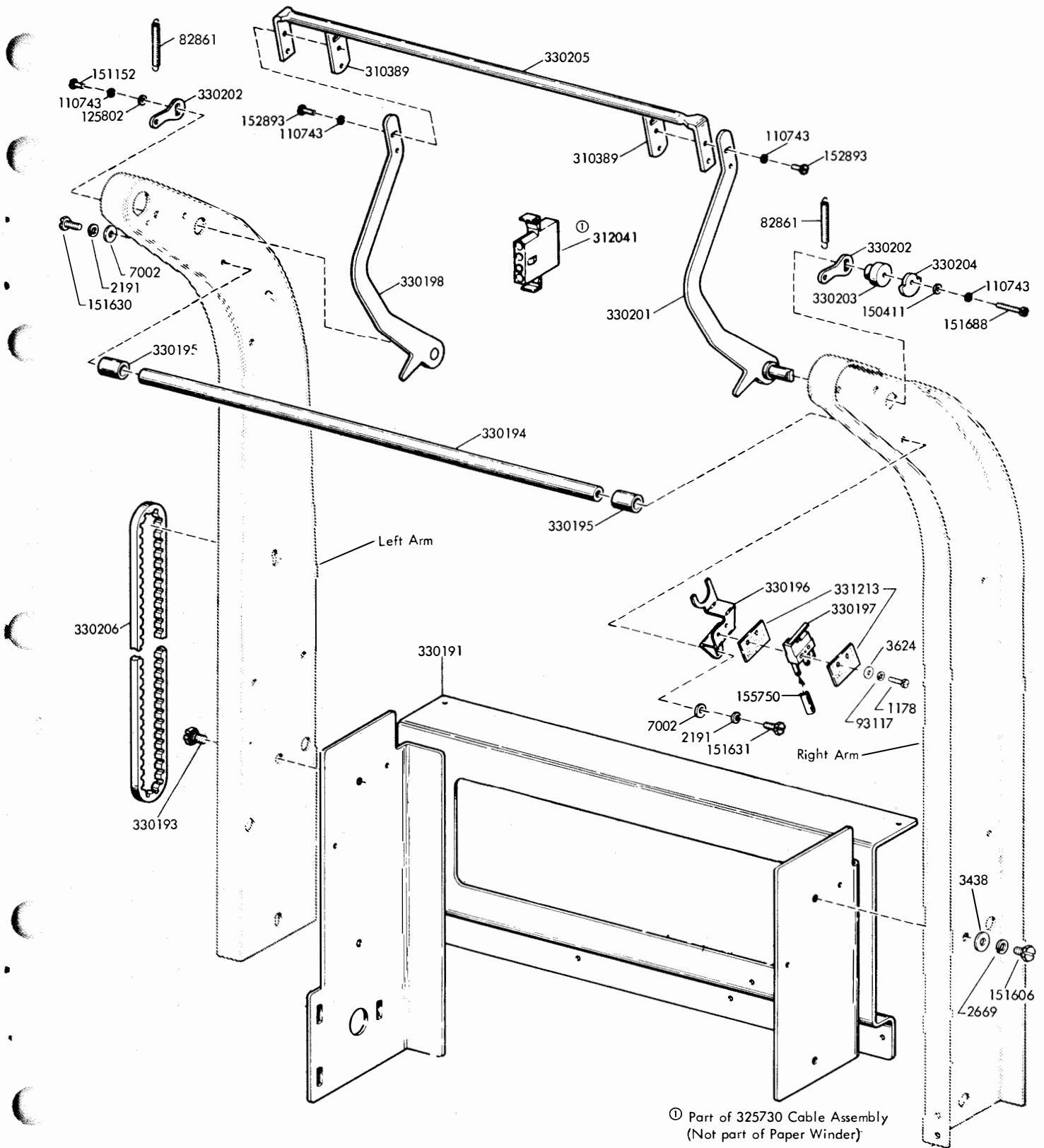


FIGURE 18. PAPER WINDER (DAPW) LEFT ARM MECHANISM



\*\* Refer to page 1 for finish suffix

FIGURE 19. PAPER WINDER (DAPW) RIGHT ARM MECHANISM



\*\*Refer To Page 1 For Finish Suffix

FIGURE 20. PAPER WINDER (DAPW) SLACK ROD

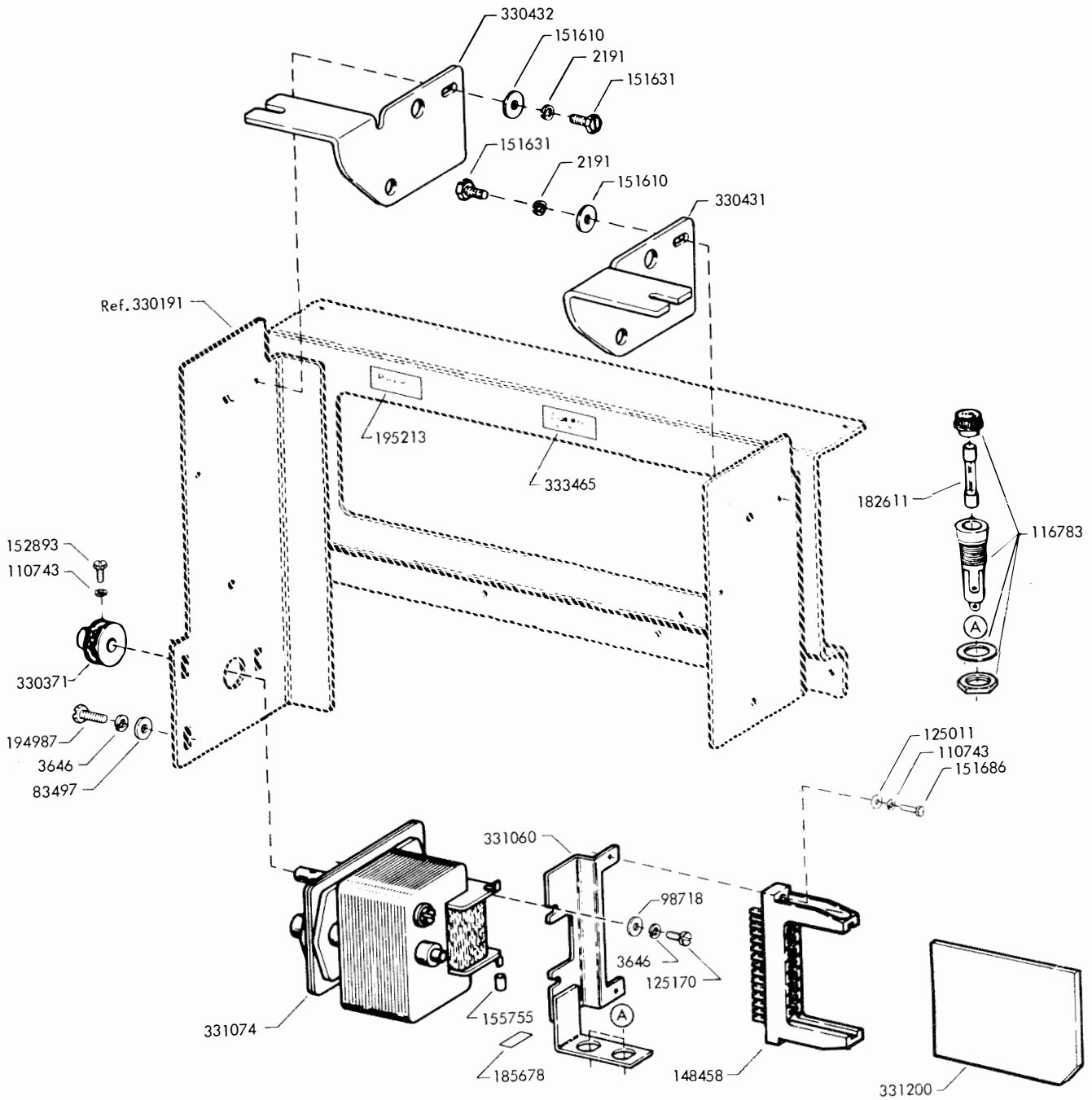


FIGURE 21. PAPER WINDER (DAPW) MOTOR AND MOUNTING BRACKETS

## NUMERICAL INDEX

Part Number	Description and Page Number	Part Number	Description and Page Number	Part Number	Description and Page Number
1157	Screw, 8-32 x 1/2 Fil 10	93117	Lockwasher 18,21	148756	Screw, No.6 Spl 7,11
1170	Screw, 6-32 x 5/16 Flat 6,7,14,15	93118	Lockwasher 3	150411	Washer, Flat 21
1178	Screw, 2-56 x 7/16 Fil 18,21	98718	Washer, Flat 6,22	150537	Ball, Bearing 19
1207	Screw, 4-36 x 5/16 Flat 20	102617	Lamp 5	150966	Insulator, Terminal Block 9,18
1248	Screw, 6-40 x 1/2 Flat 19	102620	Starter 2	150992	Stud 18
1263	Screw, 6-32 x 1/4 Fil 6, 11,13	107116	Lockwasher 3,11	151152	Screw, 4-40 x 3/16 Hex 4,21
1298	Screw, 8-32 x 1/4 Fil 6	110126	Lockwasher 6,10	151415	Block, Terminal 9,18
2191	Lockwasher 2 to 22	110435	Nut, 4-40 Hex 4	151416	Nut, 6-40 Hex 9,18,19
2658	Nut, 6-32 Hex 3,4,6,8, 14,15	110743	Lockwasher 6,19,20,21,22	151418	Fuse, 10 Amp 9
2669	Lockwasher 2,6,7,12,13, 17,20,21	110872	Spring, Compression 20	151606	Screw, 10-32 x 1/4 Hex 12,20,21
3339	Nut, 9/16-32 Hex 19	111017	Screw, 6-40 x 5/16 Fil 9,18	151610	Washer, Flat 12,16,22
3438	Washer, Flat 2,6,17,20,21	111346	Spring, Compression 4,13	151629	Nut, 6-40 Lug 18
3598	Nut, 6-40 Hex 9 to 13,19, 20	112498	Screw, 6-40 x 3/4 Flat 18	151630	Screw, 6-40 x 1/4 Hex 4,6,13,18,19,21
3599	Nut, 4-40 Hex 3	112626	Nut, 10-32 Hex 7,13	151631	Screw, 6-40 x 5/16 Hex 2,5,7,8,11,15,20,21,22
3603	Nut, 1/4-32 Hex 18	113850	Washer, Flat 18	151632	Screw, 6-40 x 3/8 Hex 2,9,10,12
3606	Nut, 6-40 hex 2,3,4,18	114876	Washer, Flat 7	151637	Screw, 4-40 x 1/4 Fil 6
3624	Washer, Flat 3,18,21	116783	Holder, Fuse 22	151685	Screw, 4-40 x 5/16 Fil 20
3640	Lockwasher 3,4,6,18	116785	Fuse, .3 Amp 9	151686	Screw, 4-40 x 3/8 Fil 22
3646	Lockwasher 2,6,9,16,22	118118	Ballast 2	151688	Screw, 4-40 x 5/8 Fil 6,21
3864	Spring 18	118119	Socket, Starter 2	151721	Screw, 6-40 x 3/4 Hex 2
5599	Nut, 8-32 Hex 6,10	118688	Switch, Toggle 9	151722	Screw, 6-40 x 3/16 Hex 4, 11,13
5740	Screw, 2-56 x 1/4 Fil 3	119467	Insulator, .032" Thk 18	151827	Strap, Terminal 9
6032	Screw, 8-32 x 7/16 Fil 10	119648	Ring, Retaining 3,6,20	151880	Nut, 4-40 Hex 20
6970	Nut, 3/8-32 Hex 19	119649	Ring, Retaining 4,7,13	152893	Screw, 4-40 x 1/4 Hex 3, 4,18 to 21
7002	Washer, Flat 2 to 11,13, 14,15,18 to 21	119651	Ring, Retaining 4,13	152893	Screw, 4-40 x 1/4 Hex 3,4 18 to 22
8330	Washer, Flat 18	119652	Ring, Retaining 6,10,12, 18,19	153441	Screw, 10-32 x 7/16 Hex 17
32464	Nut, 5-40 hex 7	119653	Ring, Retaining 16	153442	Screw, 10-32 x 1/2 Hex 2,6
44048	Washer, Flat 6,9,10	121243	Clamp, 3/16 ID Cable 3	153492	Connector, 3Pt Plug 11
55219	Screw, 8-32 x 3/8 Fil 10	121248	Clamp, 1/2 ID Cable 9,10	153493	Connector, 3Pt Receptacle 11
60669	Spring 18	121551	Screw, 8-32 x 1/4 Hex 9	153538	Screw, 6-40 x 7/16 Hex 18,19
70071	Lockwasher 19	124177	Lockwasher 7	153817	Screw, 4-40 x 3/8 Hex 3, 22
70314	Washer, Flat 4	124999	Switch, Sensitive 18	153839	Screw, 6-40 x 5/8 Hex 12, 18
73175	Lockwasher 19	125011	Washer, Flat 3,6,19,20,22	154290	Ring, "O" 17
74702	Spring 21	125015	Washer, Flat 2,3,6	154688	Spring 10
76099	Washer, Flat 2	125108	Screw, 6-32 x 3/8 Fil 13, 14,15	155750	Sleeve, 3/32 ID x 1/2" Lg Insulating 20,21
77902	Screw, 6-40 x 2-3/8 RD 20	125143	Screw, 6-32 x 3/8 Flat 6		
82861	Spring 21	125170	Screw, 8-32 x 5/16 Fil 10,16,22		
83497	Washer, Flat 22	125802	Washer, Flat 3,21		
84579	Washer, Flat 7	126295	Fuse, .5 Amp 9		
84990	Screw, 6-40 x 1/4 Flat 9	128359	Ring, Retaining 17		
85529	Screw, 10-32 Shoulder 13	130667	Lockwasher 18		
88891	Spring 16	135563	Jumper, 2-3/4" Green 11		
90790	Washer, Flat 17,18	144778	Screw, No.6 Self-Tapping 14,15		
		145719	Jumper, 5-1/2" Brown 18		
		148458	Connector, 15Pt Circuit Card 22		

## NUMERICAL INDEX (Continued)

Part Number	Description and Page Number	Part Number	Description and Page Number	Part Number	Description and Page Number
155753	Sleeve, 1/8 ID x 1/2" Lg Insulating 2	301035	Screw, 2-56 Shoulder 2	330103	Bracket, Right 2
155755	Sleeve, 11/64 ID x 5/8" Lg Insulating 20,22	304915	Connector, 2 Pt Receptacle 9	330104**	Panel 2
156448	Bushing 18	304916	Connector, 2 Pt Plug 9	330105	Bracket, Left 2
156449	Lever, Switch 18	306964	Strip, Terminal 20	330106	Bracket, Right 2
156768	Screw, 8-32 x 9/32 Hex 2	309596	Nut, Speed 2	330107	Bracket, Connector 2
156875	Screw, 6-40 x 5/32 Fil 14,15	310389	Plate, Nut 21	330108**	Cover, Front 4
159543	Washer, Flat 4	311602	Connector, 9 Pt Receptacle 2,3	330109	Hinge 3
160308	Capacitor, 300 MFD 20	312041	Connector, 4 Pt Receptacle 21	330110**	Cover 3
171158	Jumper, 6" Black 18	312783	Stud, Locating 2	330111**	Lid, Rear 3
172715	Screw, 10-24 Captive 8	312784	Clip, Speed 2	330113	Guide, Paper 3
172763	Nut, Grip 6	312802	Bracket, Left Hinge 3	330114	Pad, Right Side 5
174080	Screw, 4-40 Self- Tapping 9	312803	Bracket, Right Hinge 3	330115	Pad, Left Side 5
176673	Suppressor, Spark 18	312809**	Latch, Cover 3	330116	Bracket, Connector 3
178922	Nut, 6-40 Shoulder 18	315675	Collar 7	330117	Plate, Nut 3
178932	Post, Supporting 9	320408	Terminal, Spade Type 6	330120**	Lid, Front 4
179993	Screw, 10-32 Shoulder 13	320410	Terminal, Spade Type 2,18	330121	Latch, Front Lid 4,13
180569	Spring, Compression 7	320418	Terminal, Ring Type 9,11	330122	Post 4
180676	Nut, No.6 Speed 11	320419	Terminal, Ring Type 9	330123	Window 4
180798	Screw, 8-32 Self- Tapping 9	320420	Terminal, Ring Type 9	330125	Cable Assembly 3
181014	Grommet, Rubber 14,17	321325	Cover, Connector 9	330154	Receptacle, Lamp 5
181104	Clip, Cable 6,12,20	324029	Plate, Hinge 4	330156	Bracket, Lamp 4
181204	Washer, Flat 2	324032	Clamp, Window 4	330157	Lens 4
181847	Nameplate 9	324034	Latch 4	330174	Rail, Tap Guide 7
181849	Nameplate 9	324043	Post, Hing 3	330183	Flange 19
182067	Nameplate 9	325188	Resistor, 500 Ohm 20	330191	Bracket 21,22
182182	Holder, Fuse 9	325218	Washer, Insulating 20	330192	Boot 19,20
182611	Fuse, SL-BL 3/8 Amp 22	325250	Insulator 9	330193	Screw, 10-32 Shoulder 21
182643	Terminal, Plug Type 2	325639	Choke 20	330194	Rod 21
182649	Connector, 6 Pt Receptacle Type 2	325719	Cable w/Terminals 9	330195	Spacer 21
182650	Connector, 6Pt Plug Type 2	325728	Plate Assembly 1,9	330196	Bracket 21
185676	Terminal, Plug Type 2	325729	Cable Assembly 9	330197	Switch 21
185678	Plate, Identification 22	325730	Cable Assembly 2,9,10,11, 12,21	330198	Lever w/Post 21
192007	Terminal, Tab Type 9	325800**	Housing Assembly, Fan 1,11	330200**	Frame, Cabinet 6,21
192050	Screw, 10-32 Shoulder 16	325804	Plate, Mounting 9	330201	Lever w/Post 21
194987	Screw, 8-32 x 3/8 Hex 22	325805	Plate, Connector Mounting 9	330202	Arm 21
195006	Arm, Stop 13	330013	Switch Assembly 6	330203	Spacer 21
195061	Switch, DT-SP 6	330020**	Unwinder Assembly, Paper 1,17,18	330204	Plate, Cam 21
195213	Plate, Identification 2,3,22	330021	Post 19	330205	Rod, Slack 21
196930	Grille 11	330028	Ballast 2	330206	Belt, 120T 21
196931	Clip 11	330032	Cable w/Terminal 2	330209	Bracket 20
198092	Fan 11	330042	Jumper, 5-1/2" Purple 18	330210**	Cover w/Post, Left 19
198670	Screw w/Lockwasher, 6-40 x 5/16 Hex 2,16	330100**	Base 2	330211**	Cover w/Post, Right 20
		330102	Bracket, Left 2	330212	Flange, Right 19
				330213	Flange, Left 19
				330217	Pad, Back 5
				330218**	Door, Front 7
				330219	Pin 7
				330221	Post 7
				330224	Screw, 8-32 SPL 16
				330225**	Top, Rear Cabinet 16



## NUMERICAL INDEX (Continued)

Part Number	Description and Page Number	Part Number	Description and Page Number	Part Number	Description and Page Number
330227	Rail, Right Guide 6	330383	Bearing 19	331096	Roller 12
330228	Rail, Left Guide 6	330388	Post 18	331097	Pin 12
330233	Nut, Speed 6	330389	Bracket 18	331101	Bracket, Door 6
330234	Guide, Right 14,15	330390**	Bracket 18	331102	Plate, Locating 6
330235	Guide, Left 14,15	330391	Post 18	331103**	Grille, Cabinet 7
330236	Slide, Ball Bearing 6	330392	Bumper, Rubber 18	331105**	Panel, Right Side 7
330237	Screw, 8-32 SPL 6	330393	Tubing 18	331106**	Panel, Left Side 7
330238	Fastener 6	330394	Arm, Left 18	331107**	Door Front 7
330239	Fastener 6	330396	Arm, Right 18	331108	Post 13
330240	Stop 6	330397	Roller 18	331109	Hinge 13
330242	Guideplate 16	330398	Shaft 18	331110**	Shelf Assembly 1,15
330243	Plate, Cam 16	330399	Support, Spindle 18	331111	Plate, Latch 13
330244	Latchbar 16	330400	Spindle Assembly 17	331112	Nameplate 13
330245**	Spacer 16	330401	Bracket 18	331113**	Panel, Switch 13
330247	Bracket, Stop 14,15	330402	Plate 18	331114	Spring, Torsion 13
330271	Rod, Latch 7	330403**	Cover, Back 17	331117	Knob 7
330276**	Arm, Right 20	330404**	Cover, Front 17	331118	Plate, Upper 6
330277	Bracket 20	330408	Tubing w/Caps 17	331120	Top, Cabinet 16
330278	Spring 20	330411	Spring 17	331121**	Plate, Cabinet 10
330279	Spring 20	330414	Bracket 18	331122**	Bracket, Mounting 10
330280	Bushing 19,20	330415	Arm, Switch 18	331123**	Bracket, Right 10
330281	Nut, 3/8-32 SPL 20	330416**	Housing, Fan 11	331124**	Bracket, Left 10
330282	Post 19,20	330419	Stud 15	331125**	Bracket 10
330283	Post, Spring 19,20	330431	Bracket, Right 22	331126	Lever 10
330284	Switch, Rocker 20	330432	Bracket, Left 22	331127	Post 10
330285**	Plate 20	330443	Spring 19	331128	Post 10
330286**	Arm, Left 19	330446	Catch 6	331129	Post 10
330287	Bushing 19	330448	Gasket 4	331135**	Shelf 14
330288	Plate, Nut 19	330451	Plate 6	331136	Trip, Shelf 14,15
330289	Shaft 19	330404**	Cover, Front 17	331137**	Plate 15
330290	Sprocket, 10T 19	331006	Switch, Reed 3,6	331138	Bracket 6
330293	Stud 19	331007	Bracket 3,6	331140**	Shelf Assembly 1,14
330294	Pulley 19	331008	Shaft 3,6	331149**	Shelf 15
330295	Belt, 75T 19	331009	Spring, Reed 3,6	331151**	Panel 13
330296	Washer, Flat 19	331012	Support, Reed 6	331159	Clamp, Cable 9
330301	Spacer, Rubber 19,20	331014	Magnet 3,4,8	331160**	Panel Assembly, Blank 1,13
330306	Leg, Adjustable 7	331040	Filter, Rear Panel 8	331161	Clip, Cable 9
330307**	Panel, Rear 8	331060	Bracket 22	331163	Bracket 2
330329	Bracket 4	331065	Magnet 7	331180	Label, Instruction 3
330330	Cable Assembly 6	331066	Screw, 8-32 x 17/36 SPL 6	331189	Nameplate 9
330336	Guide, Shaft 6	331067	Bracket, Horizontal	331200	Card, Circuit 22
330337	Shaft 6	331068	Bracket, Vertical Filter 8	331213	Insulator 21
330338	Spring, Compression 6	331074	Motor, 115V AC 22	331227	Jumper, 3-1/4" White 9
330339	Insulator 6	331080	Bracket, Roller 12	331228	Jumper, 3-1/4" Black 9
330340	Actuator, Switch 6	331085	Bracket 12	331230	Isolator 2
330341	Plate, Switch Mounting 6	331086	Bracket 12	331248	Insulator 9
330367	Spring, Release 3	331087	Clamp, Cable 12	331354	Race w/Clutch 19
330371	Sprocket 22	331093	Guide 12	331355	Bank, Spring 19
330382	Bumper, Rubber 7,13			331356	Shim, .042" Thk 19

NUMERICAL INDEX (Continued)

Part Number	Description and Page Number	Part Number	Description and Page Number	Part Number	Description and Page Number
331357	Housing 19	331376	Support 18	333465	Plate, Identification 2,3,22
331365	Shaft 19	331389	Spindle Assembly 17	334098	Plate 6