

INSTRUCTIONS FOR INSTALLING THE 195388 MODIFICATION
KIT TO RELOCATE THE POWER SWITCH FROM THE REAR TO THE
FRONT OF THE MODEL 28 RECEIVE-ONLY TYPING REPERFORATOR
SET (LPR)

1. GENERAL

a. The 195388 Modification Kit provides the means of relocating the power switch of the receive-only typing reperforator from the rear of the set to the front.

b. The following modifications must be made to use the 195388 Kit:

(1) Two holes must be drilled and tapped (See Figure 1) in the base plate for the switch bracket.

(2) The front cover must be worked over to provide an elongated slot for access to the power switch. (See Figure 2)

c. The 195388 Kit consists of:

2	2191	Washer, Lock	1	162185	Switch, Bracket
2	151630	Screw	1	195399	Cable Assembly

d. For parts ordering information see Teletype Model 28 Parts Bulletin 1167B.

2. INSTALLATION (Figures 1,2, and 3)

NOTE

Make certain that no chips or metal particles fall into the set while drilling and cutting in the next two paragraphs.

a. Drill and tap two 6-40 holes in the top base plate as shown on Figure 1.

b. Cut elongated hole in front of cover as shown on Figure 2.

c. Fasten the 162185 Switch Bracket with the 151630 Screws and the 2191 Lock Washers in the holes made in Paragraph 2.a. above.

NOTE

Power switch should be mounted with the switch leads pointing up.

d. Remove the power switch leads from the rear lower terminal block. Wrap tinned wire of the 195399 Cable Assembly around the terminals of the power switch leads. Solder and tape. (See Figure 3)

e. Reconnect the terminals of the elongated leads to Terminals 1 and 2 of the rear lower terminal block.

3. ADJUSTMENTS AND LUBRICATION

a. The 195388 Kit requires no adjustments or lubrication procedure.

b. For adjustments and lubrication procedure of related equipment see Teletype Bulletin 247B.

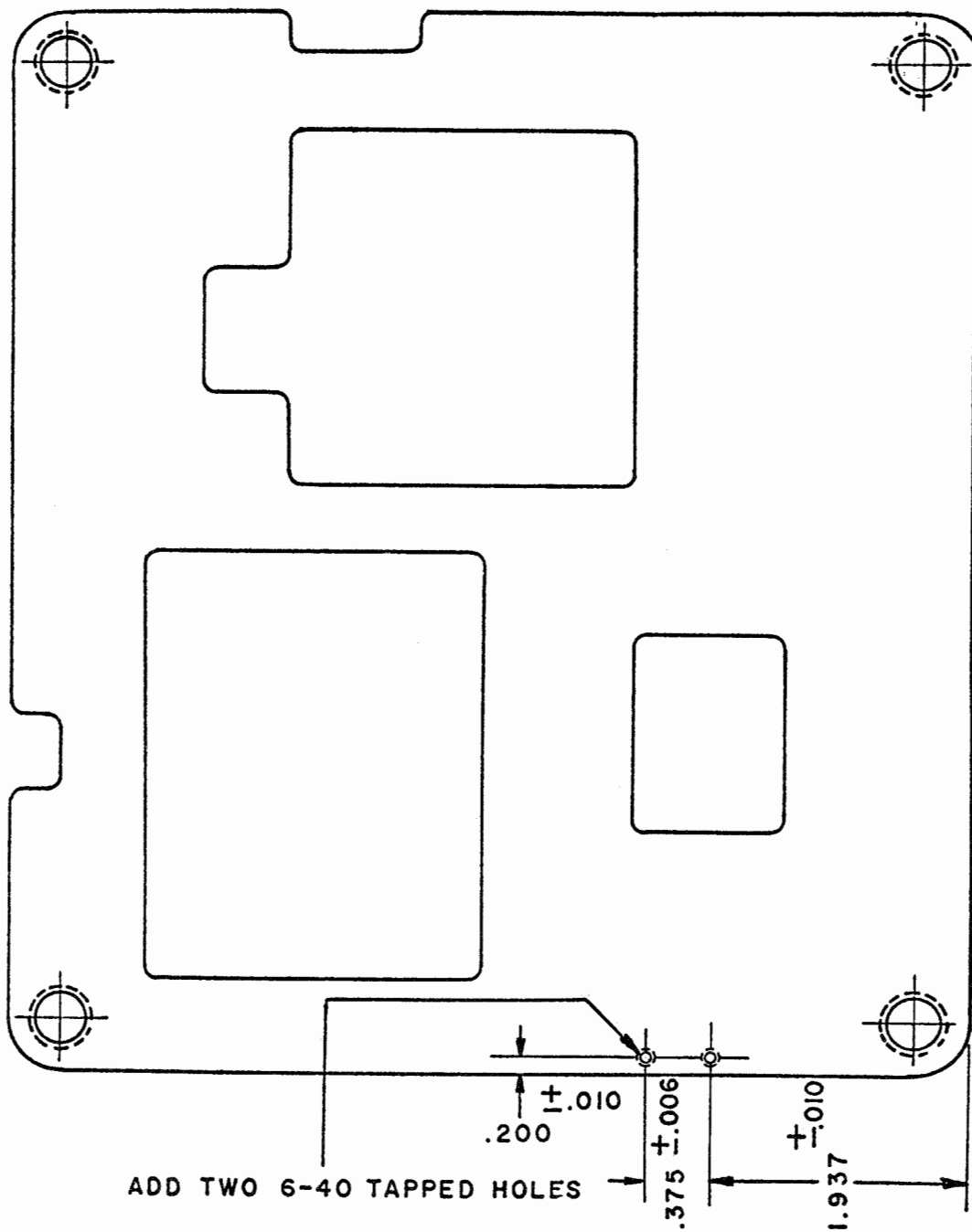
*

*

*

50155S

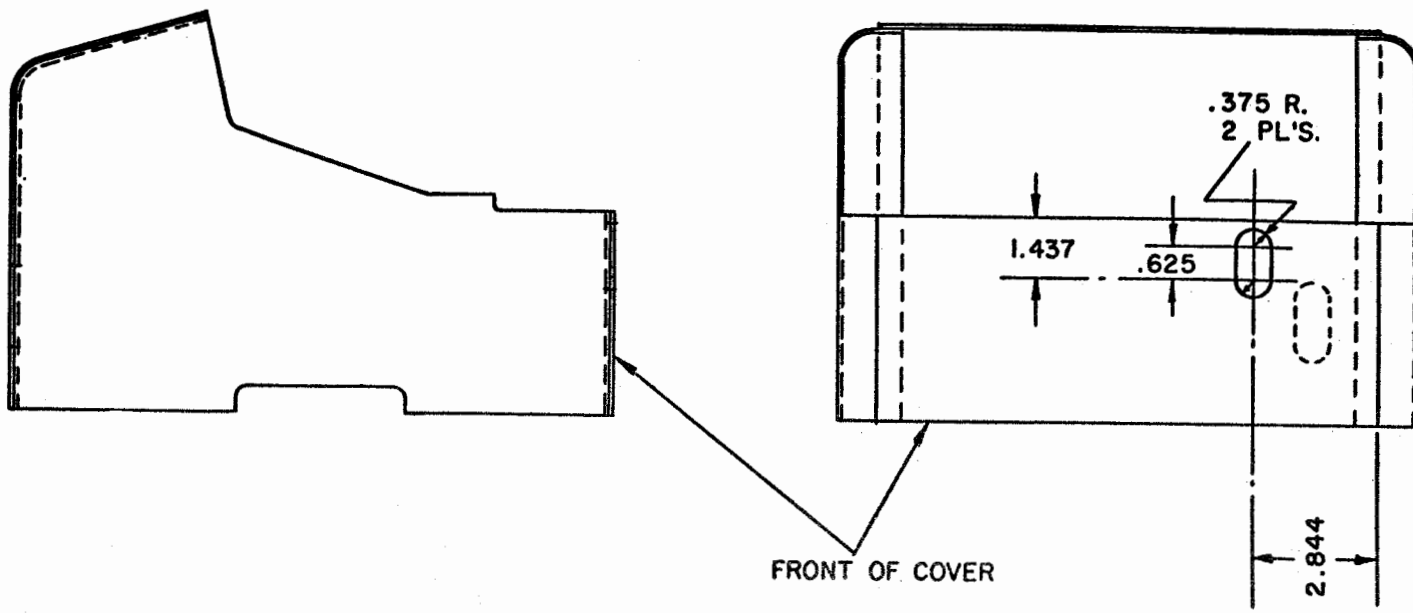
UPPER BASE PLATE



DO NOT SCALE. USE DIMENSIONS.

FIGURE 1.

FIGURE 2.



DO NOT SCALE. USE DIMENSIONS.

FIGURE 3.

