

TOOLS

LOCKING - DESCRIPTION

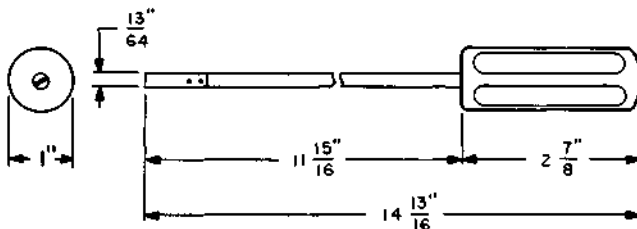
1. GENERAL

1.01 This section covers coded Bell System locking tools.

1.02 When this section is reissued, the reason for reissue will be listed in this paragraph.

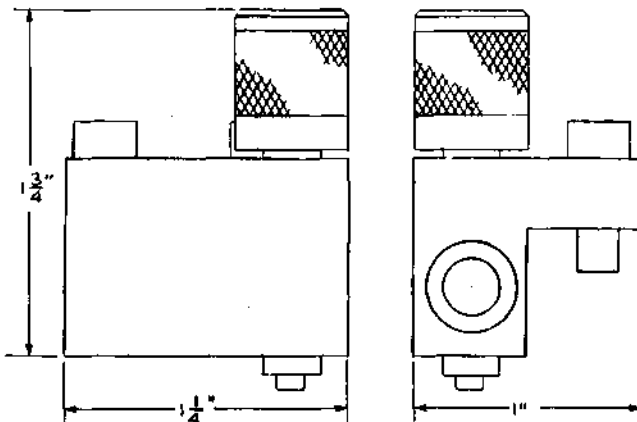
1.03 The information contained in this section supersedes the corresponding information in Sections 074-102-101, 074-136-101, 074-137-101, and 074-154-101.

124



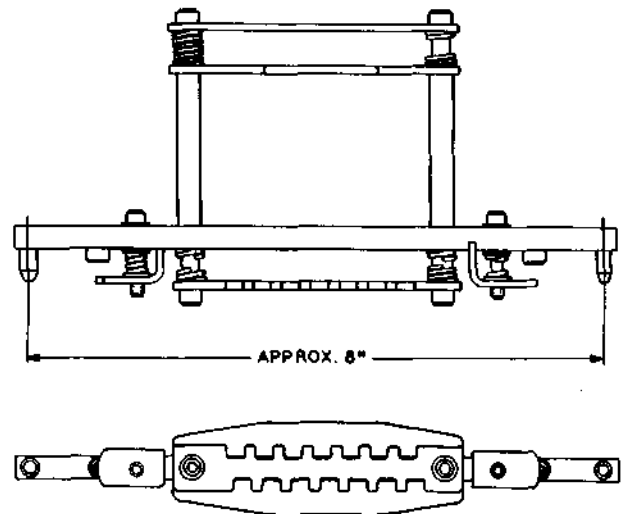
Sleeve terminal locking tool. For use on 49-type jacks to twist the sleeve terminal to lock the sleeve in position.

642A



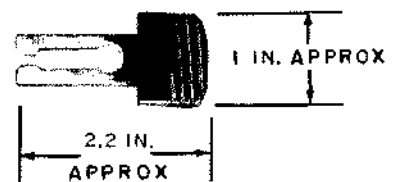
Dial locking tool. Replaces the D-178352 tool. For use as a dial lock on the KS-13835 readers in AMA Systems while adjustments are being made.

649A



Pin locking tool. Replaces the D-178386 tool. For securing the perforator pins on a KS-13882 perforator during shipment in the KS-14131 carrying case.

777A



Locking tool. To lock the horizontal select bar on CA through CF types of small crossbar switches.

NOTICE

Not for use or disclosure outside the Bell System except under written agreement