

## B, C, AND D INSULATOR SUPPORTS

### 1. GENERAL

1.01 The B, C, and D insulator supports (Fig. 1 and 2) equipped with bridle rings or S or T knobs are used to support wires on structural framework.

1.02 They consist of a cast iron or aluminum alloy frame with a set screw for securing the support in place. Tapped holes are provided for mounting of bridle rings or S or T knobs.

1.03 The B and D support will accommodate flanges up to 3/4 inch.

1.04 The C support will accommodate flanges up to 1 inch.

1.05 The B support can be equipped only with B or M bridle rings. It is intended for use as an intermediate attachment.

1.06 The C and D support can be equipped with S or T knobs and B or M bridle rings. It is intended for use as a first or intermediate attachment.

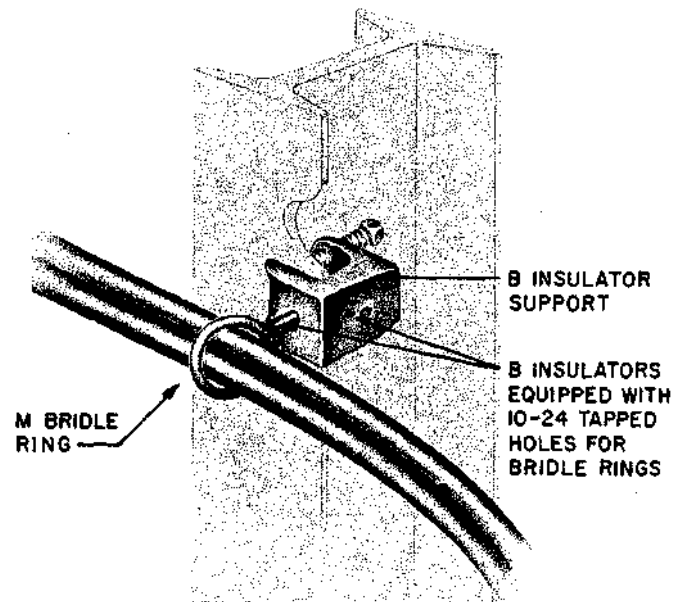


Fig. 1 — Insulator Support as Intermediate Attachment

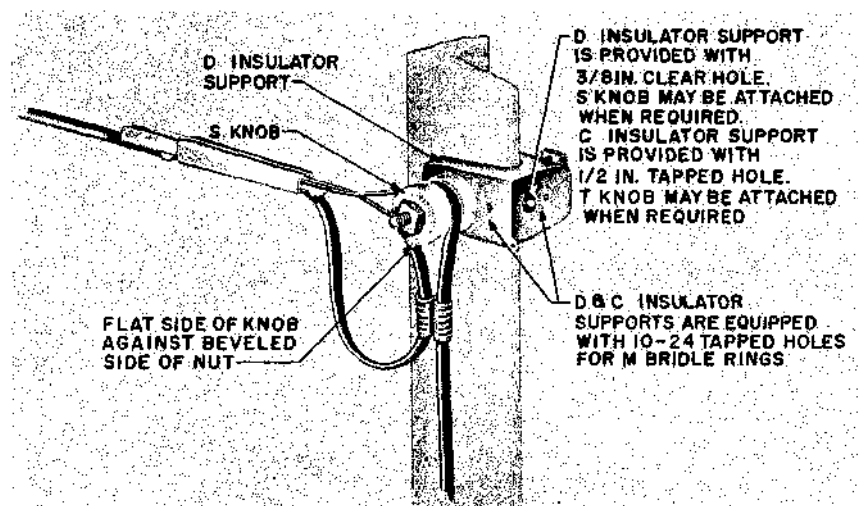


Fig. 2 — D Insulator Support as First Attachment