

BY SOURCE AND
 DISTRIBUTION

	PERCENT	AMOUNT		PERCENT	AMOUNT
1. RECEIPTS	100	100	2. EXPENDITURES	100	100
1.1 TAXES	78.5	78.5	2.1 CURRENT EXPENDITURES	67.7	67.7
1.2 NON-TAX RECEIPTS	21.5	21.5	2.2 DEFENSE	12.5	12.5
1.11 FEDERAL INCOME TAXES	45.5	45.5	2.21 MILITARY PERSONNEL	3.5	3.5
1.12 SOCIAL SECURITY TAXES	15.5	15.5	2.22 MILITARY SUPPLIES	3.5	3.5
1.13 STATE AND LOCAL INCOME TAXES	10.5	10.5	2.23 MILITARY CONTRACTS	3.5	3.5
1.14 FEDERAL EXCISE TAXES	5.5	5.5	2.24 MILITARY PERSONNEL BENEFITS	1.5	1.5
1.15 STATE AND LOCAL EXCISE TAXES	3.5	3.5	2.25 MILITARY PERSONNEL HOUSING	1.5	1.5
1.16 FEDERAL ESTATE TAXES	2.5	2.5	2.26 MILITARY PERSONNEL TRAVEL	1.0	1.0
1.17 STATE AND LOCAL ESTATE TAXES	1.5	1.5	2.27 MILITARY PERSONNEL EDUCATION	1.0	1.0
1.18 FEDERAL GIFT TAXES	1.0	1.0	2.28 MILITARY PERSONNEL RETIREMENT	1.0	1.0
1.19 STATE AND LOCAL GIFT TAXES	0.5	0.5	2.29 MILITARY PERSONNEL UNEMPLOYMENT COMPENSATION	1.0	1.0
1.21 FEDERAL TRUST FUNDS	1.5	1.5	2.30 MILITARY PERSONNEL VETERANS BENEFITS	1.0	1.0
1.22 NON-TAX RECEIPTS	21.5	21.5	2.31 MILITARY PERSONNEL LIFE INSURANCE	1.0	1.0
1.221 FEDERAL RESERVE BANK PROFITS	1.5	1.5	2.32 MILITARY PERSONNEL LIFE SAVINGS	1.0	1.0
1.222 FEDERAL RESERVE BANK INTEREST	1.0	1.0	2.33 MILITARY PERSONNEL LIFE SAVINGS	1.0	1.0
1.223 FEDERAL RESERVE BANK DIVIDENDS	0.5	0.5	2.34 MILITARY PERSONNEL LIFE SAVINGS	1.0	1.0
1.224 FEDERAL RESERVE BANK INTEREST	0.5	0.5	2.35 MILITARY PERSONNEL LIFE SAVINGS	1.0	1.0
1.225 FEDERAL RESERVE BANK DIVIDENDS	0.5	0.5	2.36 MILITARY PERSONNEL LIFE SAVINGS	1.0	1.0
1.226 FEDERAL RESERVE BANK INTEREST	0.5	0.5	2.37 MILITARY PERSONNEL LIFE SAVINGS	1.0	1.0
1.227 FEDERAL RESERVE BANK DIVIDENDS	0.5	0.5	2.38 MILITARY PERSONNEL LIFE SAVINGS	1.0	1.0
1.228 FEDERAL RESERVE BANK INTEREST	0.5	0.5	2.39 MILITARY PERSONNEL LIFE SAVINGS	1.0	1.0
1.229 FEDERAL RESERVE BANK DIVIDENDS	0.5	0.5	2.40 MILITARY PERSONNEL LIFE SAVINGS	1.0	1.0
1.230 FEDERAL RESERVE BANK INTEREST	0.5	0.5	2.41 MILITARY PERSONNEL LIFE SAVINGS	1.0	1.0
1.231 FEDERAL RESERVE BANK DIVIDENDS	0.5	0.5	2.42 MILITARY PERSONNEL LIFE SAVINGS	1.0	1.0
1.232 FEDERAL RESERVE BANK INTEREST	0.5	0.5	2.43 MILITARY PERSONNEL LIFE SAVINGS	1.0	1.0
1.233 FEDERAL RESERVE BANK DIVIDENDS	0.5	0.5	2.44 MILITARY PERSONNEL LIFE SAVINGS	1.0	1.0
1.234 FEDERAL RESERVE BANK INTEREST	0.5	0.5	2.45 MILITARY PERSONNEL LIFE SAVINGS	1.0	1.0
1.235 FEDERAL RESERVE BANK DIVIDENDS	0.5	0.5	2.46 MILITARY PERSONNEL LIFE SAVINGS	1.0	1.0
1.236 FEDERAL RESERVE BANK INTEREST	0.5	0.5	2.47 MILITARY PERSONNEL LIFE SAVINGS	1.0	1.0
1.237 FEDERAL RESERVE BANK DIVIDENDS	0.5	0.5	2.48 MILITARY PERSONNEL LIFE SAVINGS	1.0	1.0
1.238 FEDERAL RESERVE BANK INTEREST	0.5	0.5	2.49 MILITARY PERSONNEL LIFE SAVINGS	1.0	1.0
1.239 FEDERAL RESERVE BANK DIVIDENDS	0.5	0.5	2.50 MILITARY PERSONNEL LIFE SAVINGS	1.0	1.0
1.240 FEDERAL RESERVE BANK INTEREST	0.5	0.5	2.51 MILITARY PERSONNEL LIFE SAVINGS	1.0	1.0
1.241 FEDERAL RESERVE BANK DIVIDENDS	0.5	0.5	2.52 MILITARY PERSONNEL LIFE SAVINGS	1.0	1.0
1.242 FEDERAL RESERVE BANK INTEREST	0.5	0.5	2.53 MILITARY PERSONNEL LIFE SAVINGS	1.0	1.0
1.243 FEDERAL RESERVE BANK DIVIDENDS	0.5	0.5	2.54 MILITARY PERSONNEL LIFE SAVINGS	1.0	1.0
1.244 FEDERAL RESERVE BANK INTEREST	0.5	0.5	2.55 MILITARY PERSONNEL LIFE SAVINGS	1.0	1.0
1.245 FEDERAL RESERVE BANK DIVIDENDS	0.5	0.5	2.56 MILITARY PERSONNEL LIFE SAVINGS	1.0	1.0
1.246 FEDERAL RESERVE BANK INTEREST	0.5	0.5	2.57 MILITARY PERSONNEL LIFE SAVINGS	1.0	1.0
1.247 FEDERAL RESERVE BANK DIVIDENDS	0.5	0.5	2.58 MILITARY PERSONNEL LIFE SAVINGS	1.0	1.0
1.248 FEDERAL RESERVE BANK INTEREST	0.5	0.5	2.59 MILITARY PERSONNEL LIFE SAVINGS	1.0	1.0
1.249 FEDERAL RESERVE BANK DIVIDENDS	0.5	0.5	2.60 MILITARY PERSONNEL LIFE SAVINGS	1.0	1.0
1.250 FEDERAL RESERVE BANK INTEREST	0.5	0.5	2.61 MILITARY PERSONNEL LIFE SAVINGS	1.0	1.0
1.251 FEDERAL RESERVE BANK DIVIDENDS	0.5	0.5	2.62 MILITARY PERSONNEL LIFE SAVINGS	1.0	1.0
1.252 FEDERAL RESERVE BANK INTEREST	0.5	0.5	2.63 MILITARY PERSONNEL LIFE SAVINGS	1.0	1.0
1.253 FEDERAL RESERVE BANK DIVIDENDS	0.5	0.5	2.64 MILITARY PERSONNEL LIFE SAVINGS	1.0	1.0
1.254 FEDERAL RESERVE BANK INTEREST	0.5	0.5	2.65 MILITARY PERSONNEL LIFE SAVINGS	1.0	1.0
1.255 FEDERAL RESERVE BANK DIVIDENDS	0.5	0.5	2.66 MILITARY PERSONNEL LIFE SAVINGS	1.0	1.0
1.256 FEDERAL RESERVE BANK INTEREST	0.5	0.5	2.67 MILITARY PERSONNEL LIFE SAVINGS	1.0	1.0
1.257 FEDERAL RESERVE BANK DIVIDENDS	0.5	0.5	2.68 MILITARY PERSONNEL LIFE SAVINGS	1.0	1.0
1.258 FEDERAL RESERVE BANK INTEREST	0.5	0.5	2.69 MILITARY PERSONNEL LIFE SAVINGS	1.0	1.0
1.259 FEDERAL RESERVE BANK DIVIDENDS	0.5	0.5	2.70 MILITARY PERSONNEL LIFE SAVINGS	1.0	1.0
1.260 FEDERAL RESERVE BANK INTEREST	0.5	0.5	2.71 MILITARY PERSONNEL LIFE SAVINGS	1.0	1.0
1.261 FEDERAL RESERVE BANK DIVIDENDS	0.5	0.5	2.72 MILITARY PERSONNEL LIFE SAVINGS	1.0	1.0
1.262 FEDERAL RESERVE BANK INTEREST	0.5	0.5	2.73 MILITARY PERSONNEL LIFE SAVINGS	1.0	1.0
1.263 FEDERAL RESERVE BANK DIVIDENDS	0.5	0.5	2.74 MILITARY PERSONNEL LIFE SAVINGS	1.0	1.0
1.264 FEDERAL RESERVE BANK INTEREST	0.5	0.5	2.75 MILITARY PERSONNEL LIFE SAVINGS	1.0	1.0
1.265 FEDERAL RESERVE BANK DIVIDENDS	0.5	0.5	2.76 MILITARY PERSONNEL LIFE SAVINGS	1.0	1.0
1.266 FEDERAL RESERVE BANK INTEREST	0.5	0.5	2.77 MILITARY PERSONNEL LIFE SAVINGS	1.0	1.0
1.267 FEDERAL RESERVE BANK DIVIDENDS	0.5	0.5	2.78 MILITARY PERSONNEL LIFE SAVINGS	1.0	1.0
1.268 FEDERAL RESERVE BANK INTEREST	0.5	0.5	2.79 MILITARY PERSONNEL LIFE SAVINGS	1.0	1.0
1.269 FEDERAL RESERVE BANK DIVIDENDS	0.5	0.5	2.80 MILITARY PERSONNEL LIFE SAVINGS	1.0	1.0
1.270 FEDERAL RESERVE BANK INTEREST	0.5	0.5	2.81 MILITARY PERSONNEL LIFE SAVINGS	1.0	1.0
1.271 FEDERAL RESERVE BANK DIVIDENDS	0.5	0.5	2.82 MILITARY PERSONNEL LIFE SAVINGS	1.0	1.0
1.272 FEDERAL RESERVE BANK INTEREST	0.5	0.5	2.83 MILITARY PERSONNEL LIFE SAVINGS	1.0	1.0
1.273 FEDERAL RESERVE BANK DIVIDENDS	0.5	0.5	2.84 MILITARY PERSONNEL LIFE SAVINGS	1.0	1.0
1.274 FEDERAL RESERVE BANK INTEREST	0.5	0.5	2.85 MILITARY PERSONNEL LIFE SAVINGS	1.0	1.0
1.275 FEDERAL RESERVE BANK DIVIDENDS	0.5	0.5	2.86 MILITARY PERSONNEL LIFE SAVINGS	1.0	1.0
1.276 FEDERAL RESERVE BANK INTEREST	0.5	0.5	2.87 MILITARY PERSONNEL LIFE SAVINGS	1.0	1.0
1.277 FEDERAL RESERVE BANK DIVIDENDS	0.5	0.5	2.88 MILITARY PERSONNEL LIFE SAVINGS	1.0	1.0
1.278 FEDERAL RESERVE BANK INTEREST	0.5	0.5	2.89 MILITARY PERSONNEL LIFE SAVINGS	1.0	1.0
1.279 FEDERAL RESERVE BANK DIVIDENDS	0.5	0.5	2.90 MILITARY PERSONNEL LIFE SAVINGS	1.0	1.0
1.280 FEDERAL RESERVE BANK INTEREST	0.5	0.5	2.91 MILITARY PERSONNEL LIFE SAVINGS	1.0	1.0
1.281 FEDERAL RESERVE BANK DIVIDENDS	0.5	0.5	2.92 MILITARY PERSONNEL LIFE SAVINGS	1.0	1.0
1.282 FEDERAL RESERVE BANK INTEREST	0.5	0.5	2.93 MILITARY PERSONNEL LIFE SAVINGS	1.0	1.0
1.283 FEDERAL RESERVE BANK DIVIDENDS	0.5	0.5	2.94 MILITARY PERSONNEL LIFE SAVINGS	1.0	1.0
1.284 FEDERAL RESERVE BANK INTEREST	0.5	0.5	2.95 MILITARY PERSONNEL LIFE SAVINGS	1.0	1.0
1.285 FEDERAL RESERVE BANK DIVIDENDS	0.5	0.5	2.96 MILITARY PERSONNEL LIFE SAVINGS	1.0	1.0
1.286 FEDERAL RESERVE BANK INTEREST	0.5	0.5	2.97 MILITARY PERSONNEL LIFE SAVINGS	1.0	1.0
1.287 FEDERAL RESERVE BANK DIVIDENDS	0.5	0.5	2.98 MILITARY PERSONNEL LIFE SAVINGS	1.0	1.0
1.288 FEDERAL RESERVE BANK INTEREST	0.5	0.5	2.99 MILITARY PERSONNEL LIFE SAVINGS	1.0	1.0
1.289 FEDERAL RESERVE BANK DIVIDENDS	0.5	0.5	3.00 MILITARY PERSONNEL LIFE SAVINGS	1.0	1.0
1.290 FEDERAL RESERVE BANK INTEREST	0.5	0.5			

1.10 The 1978-1979 season opened with an ice on the ground, followed by a period of rain. Because of the rain, the ground was very wet.

1.11 The 1978-1979 season opened with an ice on the ground, followed by a period of rain. Because of the rain, the ground was very wet. The 1979-1980 season opened with an ice on the ground, followed by a period of rain. Because of the rain, the ground was very wet. The 1980-1981 season opened with an ice on the ground, followed by a period of rain. Because of the rain, the ground was very wet.

1.12 The 1978-1979 season opened with an ice on the ground, followed by a period of rain. Because of the rain, the ground was very wet.

1.13 The 1978-1979 season opened with an ice on the ground, followed by a period of rain. Because of the rain, the ground was very wet.

1.14 The 1978-1979 season opened with an ice on the ground, followed by a period of rain. Because of the rain, the ground was very wet.

1.15 The 1978-1979 season opened with an ice on the ground, followed by a period of rain. Because of the rain, the ground was very wet.

1.16 The 1978-1979 season opened with an ice on the ground, followed by a period of rain. Because of the rain, the ground was very wet.

- (a) The 1978-1979 season opened with an ice on the ground, followed by a period of rain. Because of the rain, the ground was very wet.
- (b) The 1979-1980 season opened with an ice on the ground, followed by a period of rain. Because of the rain, the ground was very wet.
- (c) The 1980-1981 season opened with an ice on the ground, followed by a period of rain. Because of the rain, the ground was very wet.
- (d) The 1981-1982 season opened with an ice on the ground, followed by a period of rain. Because of the rain, the ground was very wet.

- (e) The 1982-1983 season opened with an ice on the ground, followed by a period of rain. Because of the rain, the ground was very wet.
- (f) The 1983-1984 season opened with an ice on the ground, followed by a period of rain. Because of the rain, the ground was very wet.
- (g) The 1984-1985 season opened with an ice on the ground, followed by a period of rain. Because of the rain, the ground was very wet.
- (h) The 1985-1986 season opened with an ice on the ground, followed by a period of rain. Because of the rain, the ground was very wet.
- (i) The 1986-1987 season opened with an ice on the ground, followed by a period of rain. Because of the rain, the ground was very wet.
- (j) The 1987-1988 season opened with an ice on the ground, followed by a period of rain. Because of the rain, the ground was very wet.



Figure 1. 60 Spring/Seat (Dorman Model) Exploded View



Figure 1— 20-Stage Turbofan Engine Stage Assembly

10. BERRY BIRD

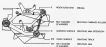


FIGURE 10.1

10.1. Structure/Description



10.11 CRANKSHAFT AND MAIN BEARING



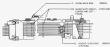
10.12 CRANKSHAFT AND MAIN BEARING



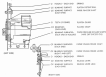


FIGURE 1

FIGURE 2: MECHANICAL DETAIL



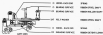
1007 Right Hand Side View



1007 Right Hand Side View

QUESTION 10

1.01 Which wire connects the seat?



ANSWER



ANSWER

1.02 Which component connects?



1.10. Technical Drawing: Machine (Cut View)



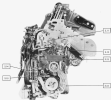


FIGURE 10-10

2.2. **Handwerkzeuge (Seite 20)**



Handsäge

- 1) Griffstück
- 2) Sägeblatt
- 3) Sägekopf
- 4) Sägebohrer
- 5) Sägebohrer
- 6) Sägebohrer
- 7) Sägebohrer



Handebene

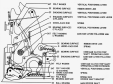
- 1) Sohle
- 2) Sägeblatt
- 3) Sägebohrer
- 4) Sägebohrer

2.3. **Handwerkzeuge (Seite 21)**

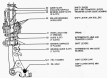


- 1) Sohle
- 2) Sägeblatt
- 3) Sägebohrer
- 4) Sägebohrer

1010: Standard Fastening Mechanisms (Single Side)



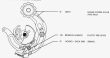
0.12. 01000000000000000000



0.13. 00000000000000000000



2.01 Motor Mechanism (continued)



SECTION 22-00000

1.01. 2-Stroke Engine



1.02. 4-Stroke Engine



1.03. 4-Stroke Engine



1.04. 4-Stroke Engine

1.01 Snake Skeleton (Illustration)

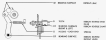
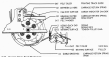


FIGURE 101

1.02 Snake Skeleton (Photograph)



1.01: Spring Drive Mechanism



1.02: Spring Drive Motor Mechanism



1.03: Motor Mechanism



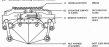
1.17) **Vertical Splicing Methods (Steel Type)**



1.18) **Vertical Splicing Methods (Concrete)**



1.21 General Purpose Microtome



1.22 General Purpose Microtome



1.07: Identifying Spur Gear Meshes



1.08: Spur Gearsets

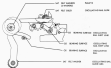


Figure 1.08

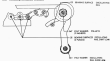


Figure 1.08

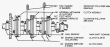
001 Working Mechanism



002 Working Mechanism



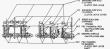
3.21. Main Shaft Assembly



3.22. Motor Fan Shaft Assembly



3.23. Main Shaft Assembly (Motor Fan Shaft)



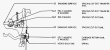
5.07 Spring Mechanism



5.08 Spring Mechanism (continued)



5.09 Spring Mechanism (continued)



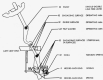


SECTION 08-1000

8.01 - Concrete Curb



Fig. 10. Single-Diode Rectifier/Inverter



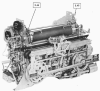


FIGURE 2 - 100 Pound Gun Rocket Ready for Flight tests

2.40. Use Your Reasoning Skills (10)

1. EAR

2. EAR

3. EAR

4. EAR

5. EAR

6. EAR

7. EAR

8. EAR

9. EAR

10. EAR

11. EAR

12. EAR

13. EAR

14. EAR

15. EAR

16. EAR

17. EAR

18. EAR

19. EAR

20. EAR

21. EAR

22. EAR

23. EAR

24. EAR

25. EAR

26. EAR

27. EAR

28. EAR

29. EAR

30. EAR

31. EAR

32. EAR

33. EAR

34. EAR

35. EAR

36. EAR

37. EAR

38. EAR

39. EAR

40. EAR

41. EAR

42. EAR

43. EAR

44. EAR

45. EAR

46. EAR

47. EAR

48. EAR

49. EAR

50. EAR

51. EAR

52. EAR

53. EAR

54. EAR

55. EAR

56. EAR

57. EAR

58. EAR

59. EAR

60. EAR

61. EAR

62. EAR

63. EAR

64. EAR

65. EAR

66. EAR

67. EAR

68. EAR

69. EAR

70. EAR

71. EAR

72. EAR

73. EAR

74. EAR

75. EAR

76. EAR

77. EAR

78. EAR

79. EAR

80. EAR

81. EAR

82. EAR

83. EAR

84. EAR

85. EAR

86. EAR

87. EAR

88. EAR

89. EAR

90. EAR

91. EAR

92. EAR

93. EAR

94. EAR

95. EAR

96. EAR

97. EAR

98. EAR

99. EAR

100. EAR

2.40. Analyze Information Skills (10)

1. EAR

2. EAR

3. EAR

4. EAR

5. EAR

6. EAR

7. EAR

8. EAR

9. EAR

10. EAR

11. EAR

12. EAR

13. EAR

14. EAR

15. EAR

16. EAR

17. EAR

18. EAR

19. EAR

20. EAR

21. EAR

22. EAR

23. EAR

24. EAR

25. EAR

26. EAR

27. EAR

28. EAR

29. EAR

30. EAR

31. EAR

32. EAR

33. EAR

34. EAR

35. EAR

36. EAR

37. EAR

38. EAR

39. EAR

40. EAR

41. EAR

42. EAR

43. EAR

44. EAR

45. EAR

46. EAR

47. EAR

48. EAR

49. EAR

50. EAR

51. EAR

52. EAR

53. EAR

54. EAR

55. EAR

56. EAR

57. EAR

58. EAR

59. EAR

60. EAR

61. EAR

62. EAR

63. EAR

64. EAR

65. EAR

66. EAR

67. EAR

68. EAR

69. EAR

70. EAR

71. EAR

72. EAR

73. EAR

74. EAR

75. EAR

76. EAR

77. EAR

78. EAR

79. EAR

80. EAR

81. EAR

82. EAR

83. EAR

84. EAR

85. EAR

86. EAR

87. EAR

88. EAR

89. EAR

90. EAR

91. EAR

92. EAR

93. EAR

94. EAR

95. EAR

96. EAR

97. EAR

98. EAR

99. EAR

100. EAR

FIGURE 10-10. CONCRETE FORMWORK



SECTION 20-00000

2.01 ROTARY TABLE - (continued)



1 TABLE ASSEMBLY SEE SEE SPEC

1.01

1.01

2.02 Rotating Tables - (continued)



10 TABLE ASSEMBLY SEE SPECIFICATIONS

1.01

11 LEAD SCREW SEE SEE SPECIFICATIONS

2 TABLE ASSEMBLY SEE SEE SPEC

3 TABLE ASSEMBLY SEE SPECIFICATIONS

4 TABLE ASSEMBLY SEE SPECIFICATIONS

5 TABLE ASSEMBLY SEE SPECIFICATIONS

6 TABLE ASSEMBLY SEE SPECIFICATIONS

7 TABLE ASSEMBLY SEE SPECIFICATIONS

8 TABLE ASSEMBLY SEE SPECIFICATIONS

9 TABLE ASSEMBLY SEE SPECIFICATIONS

10 TABLE ASSEMBLY SEE SPECIFICATIONS

11 TABLE ASSEMBLY SEE SPECIFICATIONS

12 TABLE ASSEMBLY SEE SPECIFICATIONS

13 TABLE ASSEMBLY SEE SPECIFICATIONS

14 TABLE ASSEMBLY SEE SPECIFICATIONS

15 TABLE ASSEMBLY SEE SPECIFICATIONS

16 TABLE ASSEMBLY SEE SPECIFICATIONS

17 TABLE ASSEMBLY SEE SPECIFICATIONS

2.03 Rotating Tables - (continued)



1 TABLE ASSEMBLY SEE SPECIFICATIONS

1.01

2 TABLE ASSEMBLY SEE SPECIFICATIONS

3 TABLE ASSEMBLY SEE SPECIFICATIONS

4 TABLE ASSEMBLY SEE SPECIFICATIONS

5 TABLE ASSEMBLY SEE SPECIFICATIONS

6 TABLE ASSEMBLY SEE SPECIFICATIONS

7 TABLE ASSEMBLY SEE SPECIFICATIONS

8 TABLE ASSEMBLY SEE SPECIFICATIONS

9 TABLE ASSEMBLY SEE SPECIFICATIONS

10 TABLE ASSEMBLY SEE SPECIFICATIONS

11 TABLE ASSEMBLY SEE SPECIFICATIONS

12 TABLE ASSEMBLY SEE SPECIFICATIONS

13 TABLE ASSEMBLY SEE SPECIFICATIONS

14 TABLE ASSEMBLY SEE SPECIFICATIONS

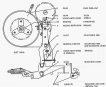
2.01. Ball Bearings (1)



2.02. Ball Bearings (2)



2.03. Tractor Wheel and Tractor Wheel Drive Mechanism



5.01. Installation Manual

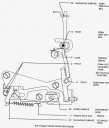
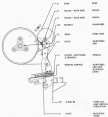
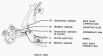


FIG. 1. Generalized Block Diagram of the Proposed System



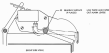
1.10. 1.10.1000 Series Splice Mechanism



1.10.1000 Series Splice Mechanism (Continued)



EN 2.1.2010/1000/0001/0001



EN 2.1.2010/1000/0001/0001

