

STANDARD FORM NO. 64 - GENERAL INFORMATION (GSA)

TABLE

CLASSIFICATION	DESCRIPTION	CLASSIFICATION	DESCRIPTION	CLASSIFICATION
1	GENERAL INFORMATION	101	GENERAL INFORMATION	101
2	GENERAL INFORMATION	102	GENERAL INFORMATION	102
3	GENERAL INFORMATION	103	GENERAL INFORMATION	103
4	GENERAL INFORMATION	104	GENERAL INFORMATION	104
5	GENERAL INFORMATION	105	GENERAL INFORMATION	105
6	GENERAL INFORMATION	106	GENERAL INFORMATION	106
7	GENERAL INFORMATION	107	GENERAL INFORMATION	107
8	GENERAL INFORMATION	108	GENERAL INFORMATION	108
9	GENERAL INFORMATION	109	GENERAL INFORMATION	109
10	GENERAL INFORMATION	110	GENERAL INFORMATION	110
11	GENERAL INFORMATION	111	GENERAL INFORMATION	111
12	GENERAL INFORMATION	112	GENERAL INFORMATION	112
13	GENERAL INFORMATION	113	GENERAL INFORMATION	113
14	GENERAL INFORMATION	114	GENERAL INFORMATION	114
15	GENERAL INFORMATION	115	GENERAL INFORMATION	115
16	GENERAL INFORMATION	116	GENERAL INFORMATION	116
17	GENERAL INFORMATION	117	GENERAL INFORMATION	117
18	GENERAL INFORMATION	118	GENERAL INFORMATION	118
19	GENERAL INFORMATION	119	GENERAL INFORMATION	119
20	GENERAL INFORMATION	120	GENERAL INFORMATION	120
21	GENERAL INFORMATION	121	GENERAL INFORMATION	121
22	GENERAL INFORMATION	122	GENERAL INFORMATION	122
23	GENERAL INFORMATION	123	GENERAL INFORMATION	123
24	GENERAL INFORMATION	124	GENERAL INFORMATION	124
25	GENERAL INFORMATION	125	GENERAL INFORMATION	125
26	GENERAL INFORMATION	126	GENERAL INFORMATION	126
27	GENERAL INFORMATION	127	GENERAL INFORMATION	127
28	GENERAL INFORMATION	128	GENERAL INFORMATION	128
29	GENERAL INFORMATION	129	GENERAL INFORMATION	129
30	GENERAL INFORMATION	130	GENERAL INFORMATION	130
31	GENERAL INFORMATION	131	GENERAL INFORMATION	131
32	GENERAL INFORMATION	132	GENERAL INFORMATION	132
33	GENERAL INFORMATION	133	GENERAL INFORMATION	133
34	GENERAL INFORMATION	134	GENERAL INFORMATION	134
35	GENERAL INFORMATION	135	GENERAL INFORMATION	135
36	GENERAL INFORMATION	136	GENERAL INFORMATION	136
37	GENERAL INFORMATION	137	GENERAL INFORMATION	137
38	GENERAL INFORMATION	138	GENERAL INFORMATION	138
39	GENERAL INFORMATION	139	GENERAL INFORMATION	139
40	GENERAL INFORMATION	140	GENERAL INFORMATION	140
41	GENERAL INFORMATION	141	GENERAL INFORMATION	141
42	GENERAL INFORMATION	142	GENERAL INFORMATION	142
43	GENERAL INFORMATION	143	GENERAL INFORMATION	143
44	GENERAL INFORMATION	144	GENERAL INFORMATION	144
45	GENERAL INFORMATION	145	GENERAL INFORMATION	145
46	GENERAL INFORMATION	146	GENERAL INFORMATION	146
47	GENERAL INFORMATION	147	GENERAL INFORMATION	147
48	GENERAL INFORMATION	148	GENERAL INFORMATION	148
49	GENERAL INFORMATION	149	GENERAL INFORMATION	149
50	GENERAL INFORMATION	150	GENERAL INFORMATION	150

STANDARD FORM NO. 64 - GENERAL INFORMATION (GSA)

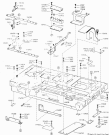


FIG. 1. COUPLED OAI SYSTEM.

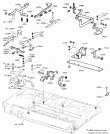


FIGURA 1. VISTA ESPLODIATA

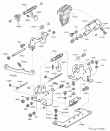


FIGURE 1. HIGH-RESOLUTION SPECTROGRAPH DESIGN

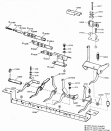


FIGURE 1. ANATOMY OF THE LARYNX



Part No.	Part Name	Quantity	Material	Notes
1	Tire	1	NR	
2	Hub	1	ST304	
3	Flange	1	ST304	
4	Washer	1	ST304	
5	Nut	1	ST304	
6	Pin	1	ST304	
7	Bracket	1	ST304	
8	Pin	1	ST304	
9	Pin	1	ST304	
10	Pin	1	ST304	
11	Pin	1	ST304	
12	Pin	1	ST304	
13	Pin	1	ST304	
14	Pin	1	ST304	
15	Pin	1	ST304	
16	Pin	1	ST304	
17	Pin	1	ST304	
18	Pin	1	ST304	
19	Pin	1	ST304	
20	Pin	1	ST304	
21	Pin	1	ST304	
22	Pin	1	ST304	
23	Pin	1	ST304	
24	Pin	1	ST304	
25	Pin	1	ST304	
26	Pin	1	ST304	
27	Pin	1	ST304	
28	Pin	1	ST304	
29	Pin	1	ST304	
30	Pin	1	ST304	
31	Pin	1	ST304	
32	Pin	1	ST304	
33	Pin	1	ST304	
34	Pin	1	ST304	
35	Pin	1	ST304	
36	Pin	1	ST304	
37	Pin	1	ST304	
38	Pin	1	ST304	
39	Pin	1	ST304	
40	Pin	1	ST304	
41	Pin	1	ST304	
42	Pin	1	ST304	
43	Pin	1	ST304	
44	Pin	1	ST304	
45	Pin	1	ST304	
46	Pin	1	ST304	
47	Pin	1	ST304	
48	Pin	1	ST304	
49	Pin	1	ST304	
50	Pin	1	ST304	
51	Pin	1	ST304	
52	Pin	1	ST304	
53	Pin	1	ST304	
54	Pin	1	ST304	
55	Pin	1	ST304	
56	Pin	1	ST304	
57	Pin	1	ST304	
58	Pin	1	ST304	
59	Pin	1	ST304	
60	Pin	1	ST304	
61	Pin	1	ST304	
62	Pin	1	ST304	
63	Pin	1	ST304	
64	Pin	1	ST304	
65	Pin	1	ST304	
66	Pin	1	ST304	
67	Pin	1	ST304	
68	Pin	1	ST304	
69	Pin	1	ST304	
70	Pin	1	ST304	
71	Pin	1	ST304	
72	Pin	1	ST304	
73	Pin	1	ST304	
74	Pin	1	ST304	
75	Pin	1	ST304	
76	Pin	1	ST304	
77	Pin	1	ST304	
78	Pin	1	ST304	
79	Pin	1	ST304	
80	Pin	1	ST304	
81	Pin	1	ST304	
82	Pin	1	ST304	
83	Pin	1	ST304	
84	Pin	1	ST304	
85	Pin	1	ST304	
86	Pin	1	ST304	
87	Pin	1	ST304	
88	Pin	1	ST304	
89	Pin	1	ST304	
90	Pin	1	ST304	
91	Pin	1	ST304	
92	Pin	1	ST304	
93	Pin	1	ST304	
94	Pin	1	ST304	
95	Pin	1	ST304	
96	Pin	1	ST304	
97	Pin	1	ST304	
98	Pin	1	ST304	
99	Pin	1	ST304	
100	Pin	1	ST304	

Figure 2. Wheel assembly



Figure 3. Motor assembly

Figure 4. Motor assembly with intermediate gear housing

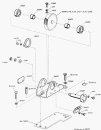


FIGURE 1. 1987-1988 FORD MUSTANG 2.9L V6 ENGINE



TABLE 1. CONTINUED (continued)



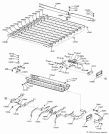


FIGURE 11.2.2023

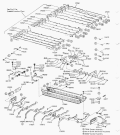


FIGURE 10. AMERICAN CROW DISTRIBUTION

**Table 11.1: Storage Allocation**

Storage	1100	1101	1102	1103	1104	1105	1106	1107	1108	1109	1110	1111
Address	0000	0001	0010	0011	0100	0101	0110	0111	1000	1001	1010	1011
Content	0000	0001	0010	0011	0100	0101	0110	0111	1000	1001	1010	1011
Address	1100	1101	1110	1111								
Content	1100	1101	1110	1111								



**Figure 11.1:** Shift Register

**Figure 11.2:** Shift Register



FIGURE 10. THREE-DIMENSIONAL VIEW OF ASSEMBLY



FIGURE 11. THREE-DIMENSIONAL VIEW OF ASSEMBLY



FIGURE 2. CEREBELLOSTOMUS MUSCULOPHYLLOIDUS

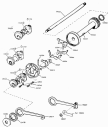


FIGURE 10. GEARBOX ASSEMBLY (PART 1)



FIGURE 1. FORM STRUCTURE FROM DATA MODELING

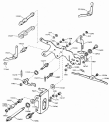


FIGURE 10

FIGURE 10. CRANK SHAFT AND FLYWHEEL ASSEMBLY





FIGURE 2. SCHEMATIC DIAGRAM OF POLYMER NETWORK STRUCTURE

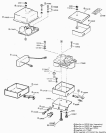


Abbildung 10: Brunnen 1000000000 mit 22 Einzelteilen (Quelle: Brunnen, 2017)

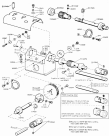

**ABWISSELN DER OKULAREN (ZEISS)**



FIGURE 11. DETAIL OF THE PUMP ASSEMBLY



FIGURE 21. (See opposite page.)



FIGURE 22. ANTHROPOMORPHIC FORM OF ANTHROPOMORPHIC NATURE (SEE OPPOSITE PAGE)

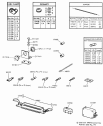


FIGURE 1. 2000-2001 FORD FOCUS



Year	Author	Title	Journal	Volume	Issue	Page
1998	...	...	...	...	...	...
1999	...	...	...	...	...	...
2000	...	...	...	...	...	...
2001	...	...	...	...	...	...
2002	...	...	...	...	...	...
2003	...	...	...	...	...	...
2004	...	...	...	...	...	...
2005	...	...	...	...	...	...
2006	...	...	...	...	...	...
2007	...	...	...	...	...	...
2008	...	...	...	...	...	...
2009	...	...	...	...	...	...
2010	...	...	...	...	...	...
2011	...	...	...	...	...	...
2012	...	...	...	...	...	...
2013	...	...	...	...	...	...
2014	...	...	...	...	...	...
2015	...	...	...	...	...	...
2016	...	...	...	...	...	...
2017	...	...	...	...	...	...
2018	...	...	...	...	...	...
2019	...	...	...	...	...	...
2020	...	...	...	...	...	...
2021	...	...	...	...	...	...
2022	...	...	...	...	...	...



FIGURE 11. SYSTEM AND SOLUTION

Account Number	Account Name	Account Description	Account Type	Account Category	Account Sub-Category	Account Code
101	Statewide	Statewide	101	101	101	101
102	Statewide	Statewide	102	102	102	102
103	Statewide	Statewide	103	103	103	103
104	Statewide	Statewide	104	104	104	104
105	Statewide	Statewide	105	105	105	105
106	Statewide	Statewide	106	106	106	106
107	Statewide	Statewide	107	107	107	107
108	Statewide	Statewide	108	108	108	108
109	Statewide	Statewide	109	109	109	109
110	Statewide	Statewide	110	110	110	110
111	Statewide	Statewide	111	111	111	111
112	Statewide	Statewide	112	112	112	112
113	Statewide	Statewide	113	113	113	113
114	Statewide	Statewide	114	114	114	114
115	Statewide	Statewide	115	115	115	115
116	Statewide	Statewide	116	116	116	116
117	Statewide	Statewide	117	117	117	117
118	Statewide	Statewide	118	118	118	118
119	Statewide	Statewide	119	119	119	119
120	Statewide	Statewide	120	120	120	120
121	Statewide	Statewide	121	121	121	121
122	Statewide	Statewide	122	122	122	122
123	Statewide	Statewide	123	123	123	123
124	Statewide	Statewide	124	124	124	124
125	Statewide	Statewide	125	125	125	125
126	Statewide	Statewide	126	126	126	126
127	Statewide	Statewide	127	127	127	127
128	Statewide	Statewide	128	128	128	128
129	Statewide	Statewide	129	129	129	129
130	Statewide	Statewide	130	130	130	130
131	Statewide	Statewide	131	131	131	131
132	Statewide	Statewide	132	132	132	132
133	Statewide	Statewide	133	133	133	133
134	Statewide	Statewide	134	134	134	134
135	Statewide	Statewide	135	135	135	135
136	Statewide	Statewide	136	136	136	136
137	Statewide	Statewide	137	137	137	137
138	Statewide	Statewide	138	138	138	138
139	Statewide	Statewide	139	139	139	139
140	Statewide	Statewide	140	140	140	140
141	Statewide	Statewide	141	141	141	141
142	Statewide	Statewide	142	142	142	142
143	Statewide	Statewide	143	143	143	143
144	Statewide	Statewide	144	144	144	144
145	Statewide	Statewide	145	145	145	145
146	Statewide	Statewide	146	146	146	146
147	Statewide	Statewide	147	147	147	147
148	Statewide	Statewide	148	148	148	148
149	Statewide	Statewide	149	149	149	149
150	Statewide	Statewide	150	150	150	150

Account Number: 101-100000-0000000000  
 Account Name: STATEWIDE  
 Account Description: STATEWIDE  
 Account Type: 101  
 Account Category: 101  
 Account Sub-Category: 101  
 Account Code: 101

ACCOUNT NO. 101-100000-0000000000



Case No.	Case Name	Case Type	Case Status	Case Date	Case Location	Case Agency	Case Contact
101	...	...	...	...	...	...	...
102	...	...	...	...	...	...	...
103	...	...	...	...	...	...	...
104	...	...	...	...	...	...	...
105	...	...	...	...	...	...	...
106	...	...	...	...	...	...	...
107	...	...	...	...	...	...	...
108	...	...	...	...	...	...	...
109	...	...	...	...	...	...	...
110	...	...	...	...	...	...	...
111	...	...	...	...	...	...	...
112	...	...	...	...	...	...	...
113	...	...	...	...	...	...	...
114	...	...	...	...	...	...	...
115	...	...	...	...	...	...	...
116	...	...	...	...	...	...	...
117	...	...	...	...	...	...	...
118	...	...	...	...	...	...	...
119	...	...	...	...	...	...	...
120	...	...	...	...	...	...	...
121	...	...	...	...	...	...	...
122	...	...	...	...	...	...	...
123	...	...	...	...	...	...	...
124	...	...	...	...	...	...	...
125	...	...	...	...	...	...	...
126	...	...	...	...	...	...	...
127	...	...	...	...	...	...	...
128	...	...	...	...	...	...	...
129	...	...	...	...	...	...	...
130	...	...	...	...	...	...	...
131	...	...	...	...	...	...	...
132	...	...	...	...	...	...	...
133	...	...	...	...	...	...	...
134	...	...	...	...	...	...	...
135	...	...	...	...	...	...	...
136	...	...	...	...	...	...	...
137	...	...	...	...	...	...	...
138	...	...	...	...	...	...	...
139	...	...	...	...	...	...	...
140	...	...	...	...	...	...	...
141	...	...	...	...	...	...	...
142	...	...	...	...	...	...	...
143	...	...	...	...	...	...	...
144	...	...	...	...	...	...	...
145	...	...	...	...	...	...	...
146	...	...	...	...	...	...	...
147	...	...	...	...	...	...	...
148	...	...	...	...	...	...	...
149	...	...	...	...	...	...	...
150	...	...	...	...	...	...	...

Case No. 101  
 Case Name: ...  
 Case Type: ...  
 Case Status: ...  
 Case Date: ...  
 Case Location: ...  
 Case Agency: ...  
 Case Contact: ...

Category	Item	Value	Value	Value	Value	Value	Value
A	...	...	...	...	...	...	...
	...	...	...	...	...	...	...
B	...	...	...	...	...	...	...
	...	...	...	...	...	...	...
C	...	...	...	...	...	...	...
	...	...	...	...	...	...	...
D	...	...	...	...	...	...	...
	...	...	...	...	...	...	...
E	...	...	...	...	...	...	...
	...	...	...	...	...	...	...
F	...	...	...	...	...	...	...
	...	...	...	...	...	...	...
G	...	...	...	...	...	...	...
	...	...	...	...	...	...	...
H	...	...	...	...	...	...	...
	...	...	...	...	...	...	...
I	...	...	...	...	...	...	...
	...	...	...	...	...	...	...
J	...	...	...	...	...	...	...
	...	...	...	...	...	...	...
K	...	...	...	...	...	...	...
	...	...	...	...	...	...	...
L	...	...	...	...	...	...	...
	...	...	...	...	...	...	...
M	...	...	...	...	...	...	...
	...	...	...	...	...	...	...
N	...	...	...	...	...	...	...
	...	...	...	...	...	...	...
O	...	...	...	...	...	...	...
	...	...	...	...	...	...	...
P	...	...	...	...	...	...	...
	...	...	...	...	...	...	...
Q	...	...	...	...	...	...	...
	...	...	...	...	...	...	...
R	...	...	...	...	...	...	...
	...	...	...	...	...	...	...
S	...	...	...	...	...	...	...
	...	...	...	...	...	...	...
T	...	...	...	...	...	...	...
	...	...	...	...	...	...	...
U	...	...	...	...	...	...	...
	...	...	...	...	...	...	...
V	...	...	...	...	...	...	...
	...	...	...	...	...	...	...
W	...	...	...	...	...	...	...
	...	...	...	...	...	...	...
X	...	...	...	...	...	...	...
	...	...	...	...	...	...	...
Y	...	...	...	...	...	...	...
	...	...	...	...	...	...	...
Z	...	...	...	...	...	...	...
	...	...	...	...	...	...	...

The information in this report is for general information only and should not be used as a basis for investment decisions. The information is not intended to constitute an offer of securities or any other financial product. The information is not intended to be relied upon as a basis for any investment decision. The information is not intended to be used as a basis for any investment decision.

Prepared by: [Company Name]

DATE	DESCRIPTION	AMOUNT	BALANCE
10/10/10	...	...	...
10/11/10	...	...	...
10/12/10	...	...	...
10/13/10	...	...	...
10/14/10	...	...	...
10/15/10	...	...	...
10/16/10	...	...	...
10/17/10	...	...	...
10/18/10	...	...	...
10/19/10	...	...	...
10/20/10	...	...	...
10/21/10	...	...	...
10/22/10	...	...	...
10/23/10	...	...	...
10/24/10	...	...	...
10/25/10	...	...	...
10/26/10	...	...	...
10/27/10	...	...	...
10/28/10	...	...	...
10/29/10	...	...	...
10/30/10	...	...	...
10/31/10	...	...	...

Total  
 ...  
 ...  
 ...

TABLE 10. MONTHLY STATEMENTS

DATE	TIME	LOCATION	REMARKS
1952	10:00	...	...
1952	10:15	...	...
1952	10:30	...	...
1952	10:45	...	...
1952	11:00	...	...
1952	11:15	...	...
1952	11:30	...	...
1952	11:45	...	...
1952	12:00	...	...
1952	12:15	...	...
1952	12:30	...	...
1952	12:45	...	...
1952	13:00	...	...
1952	13:15	...	...
1952	13:30	...	...
1952	13:45	...	...
1952	14:00	...	...
1952	14:15	...	...
1952	14:30	...	...
1952	14:45	...	...
1952	15:00	...	...
1952	15:15	...	...
1952	15:30	...	...
1952	15:45	...	...
1952	16:00	...	...
1952	16:15	...	...
1952	16:30	...	...
1952	16:45	...	...
1952	17:00	...	...
1952	17:15	...	...
1952	17:30	...	...
1952	17:45	...	...
1952	18:00	...	...
1952	18:15	...	...
1952	18:30	...	...
1952	18:45	...	...
1952	19:00	...	...
1952	19:15	...	...
1952	19:30	...	...
1952	19:45	...	...
1952	20:00	...	...
1952	20:15	...	...
1952	20:30	...	...
1952	20:45	...	...
1952	21:00	...	...
1952	21:15	...	...
1952	21:30	...	...
1952	21:45	...	...
1952	22:00	...	...
1952	22:15	...	...
1952	22:30	...	...
1952	22:45	...	...
1952	23:00	...	...
1952	23:15	...	...
1952	23:30	...	...
1952	23:45	...	...
1952	24:00	...	...

1. The first part of the report is a summary of the work done during the period covered by the report. It includes a description of the objectives of the work, a list of the methods used, and a summary of the results obtained.

2. The second part of the report is a detailed description of the work done during the period covered by the report. It includes a description of the objectives of the work, a list of the methods used, and a summary of the results obtained.

3. The third part of the report is a summary of the work done during the period covered by the report. It includes a description of the objectives of the work, a list of the methods used, and a summary of the results obtained.

4. The fourth part of the report is a summary of the work done during the period covered by the report. It includes a description of the objectives of the work, a list of the methods used, and a summary of the results obtained.

TABLE 1. SUMMARY OF RESULTS



FIGURE 11. 1980 WATER WITHDRAWALS BY STATE AND WATER BODY



FIGURE 12. 1980 WATER WITHDRAWALS BY COUNTY AND WATER BODY



FIGURE 12. SCHEMATIC DIAGRAM OF THE MONITORING SYSTEM



INTERNATIONAL BANKING

Ac. Code	Description of Asset
1000	Cash
1010	Accounts receivable
1020	Notes receivable
1030	Other receivables
1040	Prepaid expenses
1050	Inventory
1060	Fixed assets
1070	Intangible assets
1080	Other assets
1090	Reserves
1100	Accumulated depreciation
1110	Accumulated amortization
1120	Accumulated depletion
1130	Accumulated impairment losses
1140	Accumulated losses
1150	Accumulated gains
1160	Accumulated other comprehensive income
1170	Accumulated other comprehensive loss
1180	Accumulated other comprehensive income/loss
1190	Accumulated other comprehensive income/loss
1200	Accumulated other comprehensive income/loss
1210	Accumulated other comprehensive income/loss
1220	Accumulated other comprehensive income/loss
1230	Accumulated other comprehensive income/loss
1240	Accumulated other comprehensive income/loss
1250	Accumulated other comprehensive income/loss
1260	Accumulated other comprehensive income/loss
1270	Accumulated other comprehensive income/loss
1280	Accumulated other comprehensive income/loss
1290	Accumulated other comprehensive income/loss
1300	Accumulated other comprehensive income/loss
1310	Accumulated other comprehensive income/loss
1320	Accumulated other comprehensive income/loss
1330	Accumulated other comprehensive income/loss
1340	Accumulated other comprehensive income/loss
1350	Accumulated other comprehensive income/loss
1360	Accumulated other comprehensive income/loss
1370	Accumulated other comprehensive income/loss
1380	Accumulated other comprehensive income/loss
1390	Accumulated other comprehensive income/loss
1400	Accumulated other comprehensive income/loss
1410	Accumulated other comprehensive income/loss
1420	Accumulated other comprehensive income/loss
1430	Accumulated other comprehensive income/loss
1440	Accumulated other comprehensive income/loss
1450	Accumulated other comprehensive income/loss
1460	Accumulated other comprehensive income/loss
1470	Accumulated other comprehensive income/loss
1480	Accumulated other comprehensive income/loss
1490	Accumulated other comprehensive income/loss
1500	Accumulated other comprehensive income/loss

Ac. Code	Description of Asset
2000	Accounts payable
2010	Notes payable
2020	Other payables
2030	Accrued liabilities
2040	Deferred liabilities
2050	Other liabilities
2060	Reserves
2070	Accumulated depreciation
2080	Accumulated amortization
2090	Accumulated depletion
2100	Accumulated impairment losses
2110	Accumulated losses
2120	Accumulated gains
2130	Accumulated other comprehensive income
2140	Accumulated other comprehensive loss
2150	Accumulated other comprehensive income/loss
2160	Accumulated other comprehensive income/loss
2170	Accumulated other comprehensive income/loss
2180	Accumulated other comprehensive income/loss
2190	Accumulated other comprehensive income/loss
2200	Accumulated other comprehensive income/loss
2210	Accumulated other comprehensive income/loss
2220	Accumulated other comprehensive income/loss
2230	Accumulated other comprehensive income/loss
2240	Accumulated other comprehensive income/loss
2250	Accumulated other comprehensive income/loss
2260	Accumulated other comprehensive income/loss
2270	Accumulated other comprehensive income/loss
2280	Accumulated other comprehensive income/loss
2290	Accumulated other comprehensive income/loss
2300	Accumulated other comprehensive income/loss
2310	Accumulated other comprehensive income/loss
2320	Accumulated other comprehensive income/loss
2330	Accumulated other comprehensive income/loss
2340	Accumulated other comprehensive income/loss
2350	Accumulated other comprehensive income/loss
2360	Accumulated other comprehensive income/loss
2370	Accumulated other comprehensive income/loss
2380	Accumulated other comprehensive income/loss
2390	Accumulated other comprehensive income/loss
2400	Accumulated other comprehensive income/loss
2410	Accumulated other comprehensive income/loss
2420	Accumulated other comprehensive income/loss
2430	Accumulated other comprehensive income/loss
2440	Accumulated other comprehensive income/loss
2450	Accumulated other comprehensive income/loss
2460	Accumulated other comprehensive income/loss
2470	Accumulated other comprehensive income/loss
2480	Accumulated other comprehensive income/loss
2490	Accumulated other comprehensive income/loss
2500	Accumulated other comprehensive income/loss

Ac. Code	Description of Asset
3000	Capital
3010	Common stock
3020	Preferred stock
3030	Retained earnings
3040	Accumulated depreciation
3050	Accumulated amortization
3060	Accumulated depletion
3070	Accumulated impairment losses
3080	Accumulated losses
3090	Accumulated gains
3100	Accumulated other comprehensive income
3110	Accumulated other comprehensive loss
3120	Accumulated other comprehensive income/loss
3130	Accumulated other comprehensive income/loss
3140	Accumulated other comprehensive income/loss
3150	Accumulated other comprehensive income/loss
3160	Accumulated other comprehensive income/loss
3170	Accumulated other comprehensive income/loss
3180	Accumulated other comprehensive income/loss
3190	Accumulated other comprehensive income/loss
3200	Accumulated other comprehensive income/loss
3210	Accumulated other comprehensive income/loss
3220	Accumulated other comprehensive income/loss
3230	Accumulated other comprehensive income/loss
3240	Accumulated other comprehensive income/loss
3250	Accumulated other comprehensive income/loss
3260	Accumulated other comprehensive income/loss
3270	Accumulated other comprehensive income/loss
3280	Accumulated other comprehensive income/loss
3290	Accumulated other comprehensive income/loss
3300	Accumulated other comprehensive income/loss
3310	Accumulated other comprehensive income/loss
3320	Accumulated other comprehensive income/loss
3330	Accumulated other comprehensive income/loss
3340	Accumulated other comprehensive income/loss
3350	Accumulated other comprehensive income/loss
3360	Accumulated other comprehensive income/loss
3370	Accumulated other comprehensive income/loss
3380	Accumulated other comprehensive income/loss
3390	Accumulated other comprehensive income/loss
3400	Accumulated other comprehensive income/loss
3410	Accumulated other comprehensive income/loss
3420	Accumulated other comprehensive income/loss
3430	Accumulated other comprehensive income/loss
3440	Accumulated other comprehensive income/loss
3450	Accumulated other comprehensive income/loss
3460	Accumulated other comprehensive income/loss
3470	Accumulated other comprehensive income/loss
3480	Accumulated other comprehensive income/loss
3490	Accumulated other comprehensive income/loss
3500	Accumulated other comprehensive income/loss

1  
2  
3  
4  
5  
6  
7  
8  
9  
10  
11  
12  
13  
14  
15  
16  
17  
18  
19  
20  
21  
22  
23  
24  
25  
26  
27  
28  
29  
30  
31  
32  
33  
34  
35  
36  
37  
38  
39  
40  
41  
42  
43  
44  
45  
46  
47  
48  
49  
50  
51  
52  
53  
54  
55  
56  
57  
58  
59  
60  
61  
62  
63  
64  
65  
66  
67  
68  
69  
70  
71  
72  
73  
74  
75  
76  
77  
78  
79  
80  
81  
82  
83  
84  
85  
86  
87  
88  
89  
90  
91  
92  
93  
94  
95  
96  
97  
98  
99  
100  
101  
102  
103  
104  
105  
106  
107  
108  
109  
110  
111  
112  
113  
114  
115  
116  
117  
118  
119  
120  
121  
122  
123  
124  
125  
126  
127  
128  
129  
130  
131  
132  
133  
134  
135  
136  
137  
138  
139  
140  
141  
142  
143  
144  
145  
146  
147  
148  
149  
150  
151  
152  
153  
154  
155  
156  
157  
158  
159  
160  
161  
162  
163  
164  
165  
166  
167  
168  
169  
170  
171  
172  
173  
174  
175  
176  
177  
178  
179  
180  
181  
182  
183  
184  
185  
186  
187  
188  
189  
190  
191  
192  
193  
194  
195  
196  
197  
198  
199  
200



Case	Author(s)	Working paper(s)		Case	Author(s)	Working paper(s)	
		Year	Journal			Year	Journal
1	...	...	...	1	...	...	...
2	...	...	...	2	...	...	...
3	...	...	...	3	...	...	...
4	...	...	...	4	...	...	...
5	...	...	...	5	...	...	...
6	...	...	...	6	...	...	...
7	...	...	...	7	...	...	...
8	...	...	...	8	...	...	...
9	...	...	...	9	...	...	...
10	...	...	...	10	...	...	...
11	...	...	...	11	...	...	...
12	...	...	...	12	...	...	...
13	...	...	...	13	...	...	...
14	...	...	...	14	...	...	...
15	...	...	...	15	...	...	...
16	...	...	...	16	...	...	...
17	...	...	...	17	...	...	...
18	...	...	...	18	...	...	...
19	...	...	...	19	...	...	...
20	...	...	...	20	...	...	...
21	...	...	...	21	...	...	...
22	...	...	...	22	...	...	...
23	...	...	...	23	...	...	...
24	...	...	...	24	...	...	...
25	...	...	...	25	...	...	...
26	...	...	...	26	...	...	...
27	...	...	...	27	...	...	...
28	...	...	...	28	...	...	...
29	...	...	...	29	...	...	...
30	...	...	...	30	...	...	...
31	...	...	...	31	...	...	...
32	...	...	...	32	...	...	...
33	...	...	...	33	...	...	...
34	...	...	...	34	...	...	...
35	...	...	...	35	...	...	...
36	...	...	...	36	...	...	...
37	...	...	...	37	...	...	...
38	...	...	...	38	...	...	...
39	...	...	...	39	...	...	...
40	...	...	...	40	...	...	...
41	...	...	...	41	...	...	...
42	...	...	...	42	...	...	...
43	...	...	...	43	...	...	...
44	...	...	...	44	...	...	...
45	...	...	...	45	...	...	...
46	...	...	...	46	...	...	...
47	...	...	...	47	...	...	...
48	...	...	...	48	...	...	...
49	...	...	...	49	...	...	...
50	...	...	...	50	...	...	...

**PROPERTY INFORMATION**

Item	Description	Item	Description	Item	Description
101	101	101	101	101	101
102	102	102	102	102	102
103	103	103	103	103	103
104	104	104	104	104	104
105	105	105	105	105	105
106	106	106	106	106	106
107	107	107	107	107	107
108	108	108	108	108	108
109	109	109	109	109	109
110	110	110	110	110	110
111	111	111	111	111	111
112	112	112	112	112	112
113	113	113	113	113	113
114	114	114	114	114	114
115	115	115	115	115	115
116	116	116	116	116	116
117	117	117	117	117	117
118	118	118	118	118	118
119	119	119	119	119	119
120	120	120	120	120	120
121	121	121	121	121	121
122	122	122	122	122	122
123	123	123	123	123	123
124	124	124	124	124	124
125	125	125	125	125	125
126	126	126	126	126	126
127	127	127	127	127	127
128	128	128	128	128	128
129	129	129	129	129	129
130	130	130	130	130	130
131	131	131	131	131	131
132	132	132	132	132	132
133	133	133	133	133	133
134	134	134	134	134	134
135	135	135	135	135	135
136	136	136	136	136	136
137	137	137	137	137	137
138	138	138	138	138	138
139	139	139	139	139	139
140	140	140	140	140	140
141	141	141	141	141	141
142	142	142	142	142	142
143	143	143	143	143	143
144	144	144	144	144	144
145	145	145	145	145	145
146	146	146	146	146	146
147	147	147	147	147	147
148	148	148	148	148	148
149	149	149	149	149	149
150	150	150	150	150	150
151	151	151	151	151	151
152	152	152	152	152	152
153	153	153	153	153	153
154	154	154	154	154	154
155	155	155	155	155	155
156	156	156	156	156	156
157	157	157	157	157	157
158	158	158	158	158	158
159	159	159	159	159	159
160	160	160	160	160	160
161	161	161	161	161	161
162	162	162	162	162	162
163	163	163	163	163	163
164	164	164	164	164	164
165	165	165	165	165	165
166	166	166	166	166	166
167	167	167	167	167	167
168	168	168	168	168	168
169	169	169	169	169	169
170	170	170	170	170	170
171	171	171	171	171	171
172	172	172	172	172	172
173	173	173	173	173	173
174	174	174	174	174	174
175	175	175	175	175	175
176	176	176	176	176	176
177	177	177	177	177	177
178	178	178	178	178	178
179	179	179	179	179	179
180	180	180	180	180	180
181	181	181	181	181	181
182	182	182	182	182	182
183	183	183	183	183	183
184	184	184	184	184	184
185	185	185	185	185	185
186	186	186	186	186	186
187	187	187	187	187	187
188	188	188	188	188	188
189	189	189	189	189	189
190	190	190	190	190	190
191	191	191	191	191	191
192	192	192	192	192	192
193	193	193	193	193	193
194	194	194	194	194	194
195	195	195	195	195	195
196	196	196	196	196	196
197	197	197	197	197	197
198	198	198	198	198	198
199	199	199	199	199	199
200	200	200	200	200	200

1  
2  
3  
4  
5  
6  
7  
8  
9  
10  
11  
12  
13  
14  
15  
16  
17  
18  
19  
20  
21  
22  
23  
24  
25  
26  
27  
28  
29  
30  
31  
32  
33  
34  
35  
36  
37  
38  
39  
40  
41  
42  
43  
44  
45  
46  
47  
48  
49  
50  
51  
52  
53  
54  
55  
56  
57  
58  
59  
60  
61  
62  
63  
64  
65  
66  
67  
68  
69  
70  
71  
72  
73  
74  
75  
76  
77  
78  
79  
80  
81  
82  
83  
84  
85  
86  
87  
88  
89  
90  
91  
92  
93  
94  
95  
96  
97  
98  
99  
100

For [redacted]

Residence of [redacted]

WILLIAM [redacted]

For [redacted]

Residence of [redacted]

For [redacted]

Residence of [redacted]

**QUESTION BANK****Q.1**

1. The following are the details of the assets and liabilities of a company as on 31st March 2019:

**Assets**

1. Fixed Assets: Land & Buildings, Plant & Machinery, Furniture, Motor Vehicle, etc.

**Liabilities**

1. Current Liabilities: Creditors, Bank Loan, etc.  
2. Long-term Liabilities: Debentures, etc.

**QUESTION BANK****Q.2**

2. The following are the details of the assets and liabilities of a company as on 31st March 2019:

**Assets**

1. Fixed Assets: Land & Buildings, Plant & Machinery, Furniture, Motor Vehicle, etc.

**Liabilities**

1. Current Liabilities: Creditors, Bank Loan, etc.  
2. Long-term Liabilities: Debentures, etc.

**Q.3**

3. The following are the details of the assets and liabilities of a company as on 31st March 2019:

**Assets**

1. Fixed Assets: Land & Buildings, Plant & Machinery, Furniture, Motor Vehicle, etc.

**Liabilities**

1. Current Liabilities: Creditors, Bank Loan, etc.  
2. Long-term Liabilities: Debentures, etc.

		UNITED STATES OF AMERICA	
No. 100-	Defendant's Name	No. 100-	Defendant's Name
100-1	ALVIN KARPIS	100-2	ALVIN KARPIS
100-3	ALVIN KARPIS	100-4	ALVIN KARPIS
100-5	ALVIN KARPIS	100-6	ALVIN KARPIS
100-7	ALVIN KARPIS	100-8	ALVIN KARPIS
100-9	ALVIN KARPIS	100-10	ALVIN KARPIS
100-11	ALVIN KARPIS	100-12	ALVIN KARPIS
100-13	ALVIN KARPIS	100-14	ALVIN KARPIS
100-15	ALVIN KARPIS	100-16	ALVIN KARPIS
100-17	ALVIN KARPIS	100-18	ALVIN KARPIS
100-19	ALVIN KARPIS	100-20	ALVIN KARPIS
100-21	ALVIN KARPIS	100-22	ALVIN KARPIS
100-23	ALVIN KARPIS	100-24	ALVIN KARPIS
100-25	ALVIN KARPIS	100-26	ALVIN KARPIS
100-27	ALVIN KARPIS	100-28	ALVIN KARPIS
100-29	ALVIN KARPIS	100-30	ALVIN KARPIS
100-31	ALVIN KARPIS	100-32	ALVIN KARPIS
100-33	ALVIN KARPIS	100-34	ALVIN KARPIS
100-35	ALVIN KARPIS	100-36	ALVIN KARPIS
100-37	ALVIN KARPIS	100-38	ALVIN KARPIS
100-39	ALVIN KARPIS	100-40	ALVIN KARPIS
100-41	ALVIN KARPIS	100-42	ALVIN KARPIS
100-43	ALVIN KARPIS	100-44	ALVIN KARPIS
100-45	ALVIN KARPIS	100-46	ALVIN KARPIS
100-47	ALVIN KARPIS	100-48	ALVIN KARPIS
100-49	ALVIN KARPIS	100-50	ALVIN KARPIS
100-51	ALVIN KARPIS	100-52	ALVIN KARPIS
100-53	ALVIN KARPIS	100-54	ALVIN KARPIS
100-55	ALVIN KARPIS	100-56	ALVIN KARPIS
100-57	ALVIN KARPIS	100-58	ALVIN KARPIS
100-59	ALVIN KARPIS	100-60	ALVIN KARPIS
100-61	ALVIN KARPIS	100-62	ALVIN KARPIS
100-63	ALVIN KARPIS	100-64	ALVIN KARPIS
100-65	ALVIN KARPIS	100-66	ALVIN KARPIS
100-67	ALVIN KARPIS	100-68	ALVIN KARPIS
100-69	ALVIN KARPIS	100-70	ALVIN KARPIS
100-71	ALVIN KARPIS	100-72	ALVIN KARPIS
100-73	ALVIN KARPIS	100-74	ALVIN KARPIS
100-75	ALVIN KARPIS	100-76	ALVIN KARPIS
100-77	ALVIN KARPIS	100-78	ALVIN KARPIS
100-79	ALVIN KARPIS	100-80	ALVIN KARPIS
100-81	ALVIN KARPIS	100-82	ALVIN KARPIS
100-83	ALVIN KARPIS	100-84	ALVIN KARPIS
100-85	ALVIN KARPIS	100-86	ALVIN KARPIS
100-87	ALVIN KARPIS	100-88	ALVIN KARPIS
100-89	ALVIN KARPIS	100-90	ALVIN KARPIS
100-91	ALVIN KARPIS	100-92	ALVIN KARPIS
100-93	ALVIN KARPIS	100-94	ALVIN KARPIS
100-95	ALVIN KARPIS	100-96	ALVIN KARPIS
100-97	ALVIN KARPIS	100-98	ALVIN KARPIS
100-99	ALVIN KARPIS	100-100	ALVIN KARPIS

**QUESTION**

1. The following table shows the number of people who attended a concert in each of the five years from 2000 to 2004.

Year	Number of people
2000	1200
2001	1500
2002	1800
2003	2100
2004	2400

2. The following table shows the number of people who attended a concert in each of the five years from 2000 to 2004.

Year	Number of people
2000	1200
2001	1500
2002	1800
2003	2100
2004	2400

**QUESTION**

1. The following table shows the number of people who attended a concert in each of the five years from 2000 to 2004.

Year	Number of people
2000	1200
2001	1500
2002	1800
2003	2100
2004	2400

2. The following table shows the number of people who attended a concert in each of the five years from 2000 to 2004.

Year	Number of people
2000	1200
2001	1500
2002	1800
2003	2100
2004	2400

**QUESTION**

1. The following table shows the number of people who attended a concert in each of the five years from 2000 to 2004.

Year	Number of people
2000	1200
2001	1500
2002	1800
2003	2100
2004	2400

2. The following table shows the number of people who attended a concert in each of the five years from 2000 to 2004.

Year	Number of people
2000	1200
2001	1500
2002	1800
2003	2100
2004	2400

PHYSICS 201

Year	Section	Topic
1950	101	Classical Mechanics
1951	102	Electromagnetism
1952	103	Quantum Mechanics
1953	104	Thermodynamics
1954	105	Optics
1955	106	Atomic Physics
1956	107	Relativity
1957	108	Particle Physics
1958	109	Statistical Mechanics
1959	110	Modern Physics
1960	111	Advanced Topics
1961	112	Research Seminars
1962	113	Special Topics
1963	114	Advanced Topics
1964	115	Research Seminars
1965	116	Special Topics
1966	117	Advanced Topics
1967	118	Research Seminars
1968	119	Special Topics
1969	120	Advanced Topics
1970	121	Research Seminars
1971	122	Special Topics
1972	123	Advanced Topics
1973	124	Research Seminars
1974	125	Special Topics
1975	126	Advanced Topics
1976	127	Research Seminars
1977	128	Special Topics
1978	129	Advanced Topics
1979	130	Research Seminars
1980	131	Special Topics
1981	132	Advanced Topics
1982	133	Research Seminars
1983	134	Special Topics
1984	135	Advanced Topics
1985	136	Research Seminars
1986	137	Special Topics
1987	138	Advanced Topics
1988	139	Research Seminars
1989	140	Special Topics
1990	141	Advanced Topics
1991	142	Research Seminars
1992	143	Special Topics
1993	144	Advanced Topics
1994	145	Research Seminars
1995	146	Special Topics
1996	147	Advanced Topics
1997	148	Research Seminars
1998	149	Special Topics
1999	150	Advanced Topics
2000	151	Research Seminars
2001	152	Special Topics
2002	153	Advanced Topics
2003	154	Research Seminars
2004	155	Special Topics
2005	156	Advanced Topics
2006	157	Research Seminars
2007	158	Special Topics
2008	159	Advanced Topics
2009	160	Research Seminars
2010	161	Special Topics
2011	162	Advanced Topics
2012	163	Research Seminars
2013	164	Special Topics
2014	165	Advanced Topics
2015	166	Research Seminars
2016	167	Special Topics
2017	168	Advanced Topics
2018	169	Research Seminars
2019	170	Special Topics
2020	171	Advanced Topics
2021	172	Research Seminars
2022	173	Special Topics
2023	174	Advanced Topics
2024	175	Research Seminars
2025	176	Special Topics
2026	177	Advanced Topics
2027	178	Research Seminars
2028	179	Special Topics
2029	180	Advanced Topics
2030	181	Research Seminars
2031	182	Special Topics
2032	183	Advanced Topics
2033	184	Research Seminars
2034	185	Special Topics
2035	186	Advanced Topics
2036	187	Research Seminars
2037	188	Special Topics
2038	189	Advanced Topics
2039	190	Research Seminars
2040	191	Special Topics
2041	192	Advanced Topics
2042	193	Research Seminars
2043	194	Special Topics
2044	195	Advanced Topics
2045	196	Research Seminars
2046	197	Special Topics
2047	198	Advanced Topics
2048	199	Research Seminars
2049	200	Special Topics

Case No.	Case Name
1	...
2	...
3	...
4	...
5	...
6	...
7	...
8	...
9	...
10	...
11	...
12	...
13	...
14	...
15	...
16	...
17	...
18	...
19	...
20	...
21	...
22	...
23	...
24	...
25	...
26	...
27	...
28	...
29	...
30	...
31	...
32	...
33	...
34	...
35	...
36	...
37	...
38	...
39	...
40	...
41	...
42	...
43	...
44	...
45	...
46	...
47	...
48	...
49	...
50	...
51	...
52	...
53	...
54	...
55	...
56	...
57	...
58	...
59	...
60	...
61	...
62	...
63	...
64	...
65	...
66	...
67	...
68	...
69	...
70	...
71	...
72	...
73	...
74	...
75	...
76	...
77	...
78	...
79	...
80	...
81	...
82	...
83	...
84	...
85	...
86	...
87	...
88	...
89	...
90	...
91	...
92	...
93	...
94	...
95	...
96	...
97	...
98	...
99	...
100	...

UNITED STATES

Case No.	Case Name
1	...
2	...
3	...
4	...
5	...
6	...
7	...
8	...
9	...
10	...
11	...
12	...
13	...
14	...
15	...
16	...
17	...
18	...
19	...
20	...
21	...
22	...
23	...
24	...
25	...
26	...
27	...
28	...
29	...
30	...
31	...
32	...
33	...
34	...
35	...
36	...
37	...
38	...
39	...
40	...
41	...
42	...
43	...
44	...
45	...
46	...
47	...
48	...
49	...
50	...
51	...
52	...
53	...
54	...
55	...
56	...
57	...
58	...
59	...
60	...
61	...
62	...
63	...
64	...
65	...
66	...
67	...
68	...
69	...
70	...
71	...
72	...
73	...
74	...
75	...
76	...
77	...
78	...
79	...
80	...
81	...
82	...
83	...
84	...
85	...
86	...
87	...
88	...
89	...
90	...
91	...
92	...
93	...
94	...
95	...
96	...
97	...
98	...
99	...
100	...

Case No.	Case Name
1	...
2	...
3	...
4	...
5	...
6	...
7	...
8	...
9	...
10	...
11	...
12	...
13	...
14	...
15	...
16	...
17	...
18	...
19	...
20	...
21	...
22	...
23	...
24	...
25	...
26	...
27	...
28	...
29	...
30	...
31	...
32	...
33	...
34	...
35	...
36	...
37	...
38	...
39	...
40	...
41	...
42	...
43	...
44	...
45	...
46	...
47	...
48	...
49	...
50	...
51	...
52	...
53	...
54	...
55	...
56	...
57	...
58	...
59	...
60	...
61	...
62	...
63	...
64	...
65	...
66	...
67	...
68	...
69	...
70	...
71	...
72	...
73	...
74	...
75	...
76	...
77	...
78	...
79	...
80	...
81	...
82	...
83	...
84	...
85	...
86	...
87	...
88	...
89	...
90	...
91	...
92	...
93	...
94	...
95	...
96	...
97	...
98	...
99	...
100	...