

14-00000

14-00000

SECTION	PAGE	SECTION	PAGE
1. GENERAL	1	1.01	1
2. STATE OF	2	1.02	2
3. COUNTY OF	3	1.03	3
4. CITY OF	4	1.04	4
5. COUNTY OF	5	1.05	5
6. COUNTY OF	6	1.06	6
7. COUNTY OF	7	1.07	7
8. COUNTY OF	8	1.08	8
9. COUNTY OF	9	1.09	9
10. COUNTY OF	10	1.10	10
11. COUNTY OF	11	1.11	11
12. COUNTY OF	12	1.12	12
13. COUNTY OF	13	1.13	13
14. COUNTY OF	14	1.14	14
15. COUNTY OF	15	1.15	15
16. COUNTY OF	16	1.16	16
17. COUNTY OF	17	1.17	17
18. COUNTY OF	18	1.18	18
19. COUNTY OF	19	1.19	19
20. COUNTY OF	20	1.20	20
21. COUNTY OF	21	1.21	21
22. COUNTY OF	22	1.22	22
23. COUNTY OF	23	1.23	23
24. COUNTY OF	24	1.24	24
25. COUNTY OF	25	1.25	25
26. COUNTY OF	26	1.26	26
27. COUNTY OF	27	1.27	27
28. COUNTY OF	28	1.28	28
29. COUNTY OF	29	1.29	29
30. COUNTY OF	30	1.30	30
31. COUNTY OF	31	1.31	31
32. COUNTY OF	32	1.32	32
33. COUNTY OF	33	1.33	33
34. COUNTY OF	34	1.34	34
35. COUNTY OF	35	1.35	35
36. COUNTY OF	36	1.36	36
37. COUNTY OF	37	1.37	37
38. COUNTY OF	38	1.38	38
39. COUNTY OF	39	1.39	39
40. COUNTY OF	40	1.40	40
41. COUNTY OF	41	1.41	41
42. COUNTY OF	42	1.42	42
43. COUNTY OF	43	1.43	43
44. COUNTY OF	44	1.44	44
45. COUNTY OF	45	1.45	45
46. COUNTY OF	46	1.46	46
47. COUNTY OF	47	1.47	47
48. COUNTY OF	48	1.48	48
49. COUNTY OF	49	1.49	49
50. COUNTY OF	50	1.50	50
51. COUNTY OF	51	1.51	51
52. COUNTY OF	52	1.52	52
53. COUNTY OF	53	1.53	53
54. COUNTY OF	54	1.54	54
55. COUNTY OF	55	1.55	55
56. COUNTY OF	56	1.56	56
57. COUNTY OF	57	1.57	57
58. COUNTY OF	58	1.58	58
59. COUNTY OF	59	1.59	59
60. COUNTY OF	60	1.60	60
61. COUNTY OF	61	1.61	61
62. COUNTY OF	62	1.62	62
63. COUNTY OF	63	1.63	63
64. COUNTY OF	64	1.64	64
65. COUNTY OF	65	1.65	65
66. COUNTY OF	66	1.66	66
67. COUNTY OF	67	1.67	67
68. COUNTY OF	68	1.68	68
69. COUNTY OF	69	1.69	69
70. COUNTY OF	70	1.70	70
71. COUNTY OF	71	1.71	71
72. COUNTY OF	72	1.72	72
73. COUNTY OF	73	1.73	73
74. COUNTY OF	74	1.74	74
75. COUNTY OF	75	1.75	75
76. COUNTY OF	76	1.76	76
77. COUNTY OF	77	1.77	77
78. COUNTY OF	78	1.78	78
79. COUNTY OF	79	1.79	79
80. COUNTY OF	80	1.80	80
81. COUNTY OF	81	1.81	81
82. COUNTY OF	82	1.82	82
83. COUNTY OF	83	1.83	83
84. COUNTY OF	84	1.84	84
85. COUNTY OF	85	1.85	85
86. COUNTY OF	86	1.86	86
87. COUNTY OF	87	1.87	87
88. COUNTY OF	88	1.88	88
89. COUNTY OF	89	1.89	89
90. COUNTY OF	90	1.90	90
91. COUNTY OF	91	1.91	91
92. COUNTY OF	92	1.92	92
93. COUNTY OF	93	1.93	93
94. COUNTY OF	94	1.94	94
95. COUNTY OF	95	1.95	95
96. COUNTY OF	96	1.96	96
97. COUNTY OF	97	1.97	97
98. COUNTY OF	98	1.98	98
99. COUNTY OF	99	1.99	99
100. COUNTY OF	100	1.100	100

WORKING INSTRUCTIONS

- 10) Apply the 10kg (22lb) 107-001 10-kg spring force.
- 11) Apply a light force of 200N (45lbf) to the top of the spring.
- 12) Apply a 100N (22.5lbf) force to the top of the spring.
- 13) Release all the weights, return spring force, etc.
- 14) Apply 100N (22.5lbf) force to the top of the spring.
- 15) Apply 100N (22.5lbf) force to the top of the spring.

5. INSTALLATION

5.1. Electrical Assembly Service



FIG. 1. General Assembly Drawing (Structure)



FIGURE 1. Schematic of a typical floating bed assembly

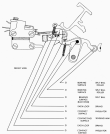
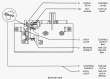


FIGURE 1

FIG. 2. Cover and Injection Area



FIG. 2 (cont.)



1.27. **Illustrate, with neat diagrams, any two of the following:**

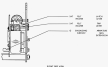
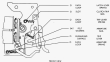
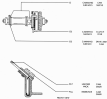


Fig. 1.10. Main body, shell, and connecting mechanism of contact



2.04 Super-Loading and Reinforcement (continued)



2017 20-100-100

1	TOP REINFORCEMENT	REINFORCEMENT
2	TOP LONGITUDINAL BARS	REINFORCEMENT
3	TOP STIRRUPS	REINFORCEMENT
4	LONGITUDINAL BARS	REINFORCEMENT
5	BOTTOM STIRRUPS	REINFORCEMENT
6	BOTTOM REINFORCEMENT	REINFORCEMENT



2017 20-100-100

1	TOP REINFORCEMENT	REINFORCEMENT
2	TOP LONGITUDINAL BARS	REINFORCEMENT
3	TOP STIRRUPS	REINFORCEMENT
4	LONGITUDINAL BARS	REINFORCEMENT
5	BOTTOM STIRRUPS	REINFORCEMENT
6	BOTTOM REINFORCEMENT	REINFORCEMENT
7	TOP REINFORCEMENT	REINFORCEMENT
8	TOP LONGITUDINAL BARS	REINFORCEMENT
9	TOP STIRRUPS	REINFORCEMENT
10	BOTTOM REINFORCEMENT	REINFORCEMENT

4.2. Tiger Type Mechanism



- 1. CRANK LINK
- 2. CONNECTING ROD
- 3. SLIDER LINK
- 4. SECOND CONNECTING ROD

4.2.1. Crank slider mechanism



- 1. CRANK LINK
- 2. CONNECTING ROD
- 3. SLIDER LINK
- 4. SECOND CONNECTING ROD

5. **Vertebrate Evolution**

5.10. Analyze the 3D model showing



FIGURE 5.10

Label	Structure
a	Braincase
b	Orbit
c	Middle ear
d	Jaw
e	Ear