

FIG. 4

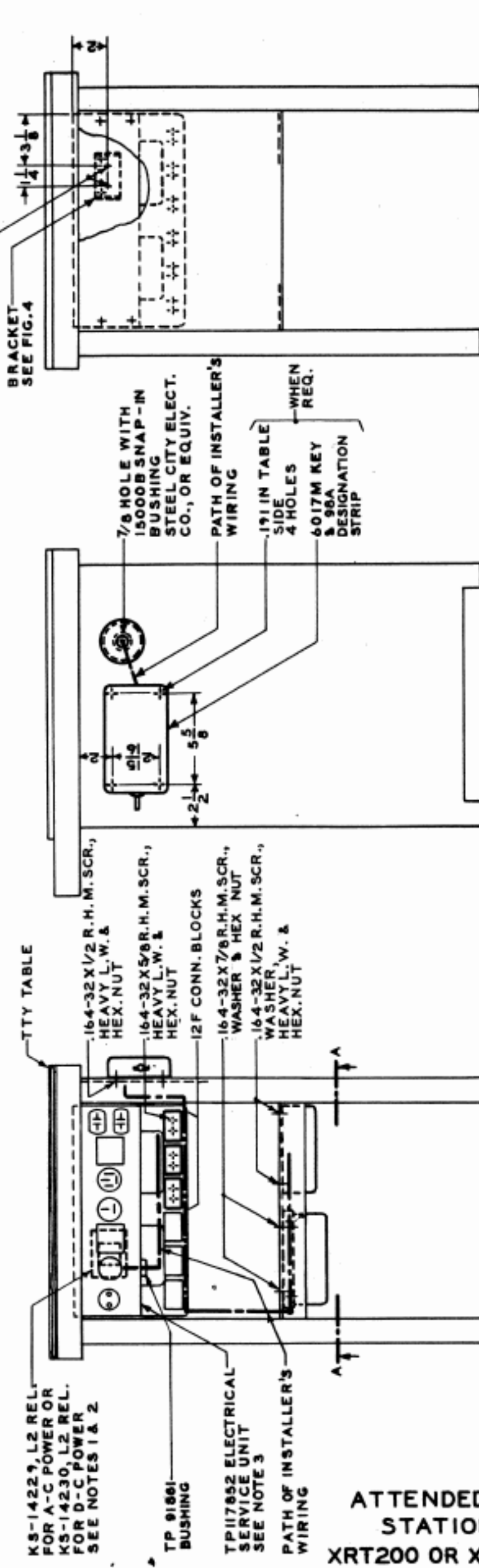


FIG. 1

FIG. 3

ATTENDED TWX SERVICE
STATION ASSEMBLY
XRT200 OR XRT201 TTY TABLE

- NOTES:
1. THE KS-14229, L2 REL. MAY BE OBTAINED BY MODIFYING A WARD LEONARD K42219 RELAY. THE MODIFICATION CONSISTS OF DISCARDING THE METAL HOUSING AND MOUNTING THE RELAY ON A BRACKET PER FIG. 4, THE BRACKET TO BE PROVIDED LOCALLY.
 2. THE KS-14230, L2 REL. MAY BE OBTAINED BY MODIFYING A WARD LEONARD K42220 RELAY. THE MODIFICATION CONSISTS OF DISCARDING THE METAL HOUSING AND MOUNTING THE RELAY ON A BRACKET PER FIG. 4, THE BRACKET TO BE PROVIDED LOCALLY.
 3. THE BACK OF THE ELECTRICAL SERVICE UNIT SHALL BE DRILLED PER FIG. 3 FOR MOUNTING THE RELAY BRACKET.