

SEE NOTE 2
FIG. A

FOR UNATTENDED
TWX SERVICE
ONLY

120C4 TTY SUB SET
MOUNTED WITH
P-353447,
.216-24 X 1/2" WE SPL RHM SCR &
TPI53017 SPEED NUTS
(SEE NOTES 1 & 3)

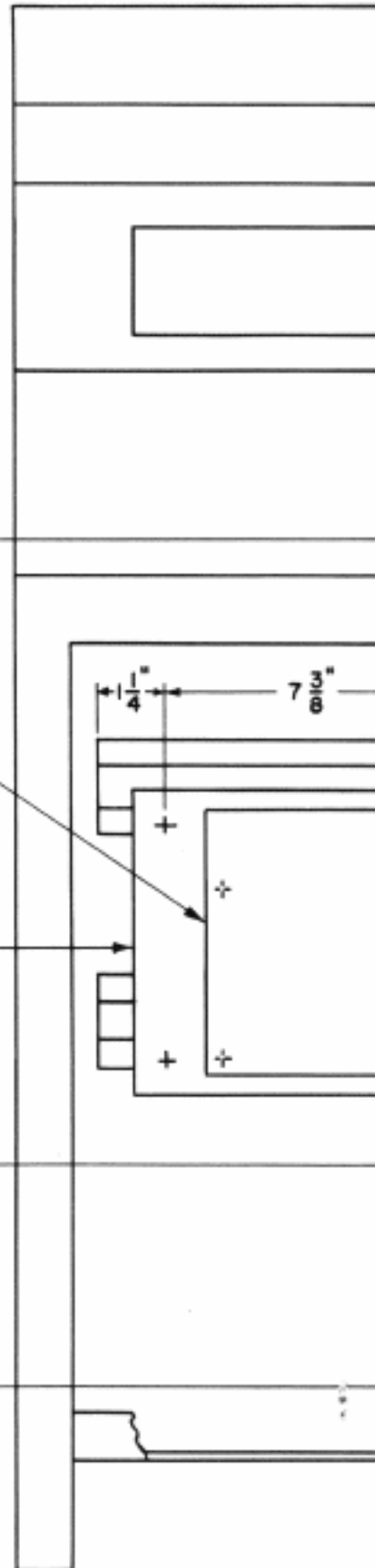
FOR ATTENDED
TWX SERVICE
ONLY

584DG SUB SET
MOUNTED WITH
NO. 8 X 3/4" RH W SCR
(CENTERED ON BACKBOARD)

BACKBOARD
PER FIG. A
MOUNTED WITH
P-353450,
.216-24 X 1" WE SPL RHM SCR &
TPI53017 SPEED NUTS
(SEE NOTE 1)

M6AD CORD

KS-5663, L8 RECTIFIER
MOUNTED WITH
P-353447,
.216-24 X 1/2" WE SPL RHM SCR &
TPI53017 SPEED NUTS
(SEE NOTES 1 & 5)



NOTES:

1. TPI53017 SPEED NUTS MADE BY TINNEMAN PRODUCTS, INC, PART NO. C509-1224-4.
2. BACKBOARD MOUNTING FOR 584DG SUB SET MADE FROM BIRCH OR MAPLE. FINISH TO BE BLACK LACQUER, 122-R.
3. UPPER MOUNTING HOLES FOR 120C4 TTY SUB SET ON VERTICAL MOUNTING BAR TO BE DRILLED TO .3125" DIA BY INSTALLER.
4. ADJUSTABLE MOUNTING BARS SHALL BE POSITIONED IN CENTER MOUNTING HOLES.
5. WHEN KS-5663, L6 RECTIFIER IS USED IN PLACE OF KS-5663, L8 RECTIFIER, IT WILL BE LOCATED TO THE LEFT OF THE UNIT MOUNTING ASSEMBLY.

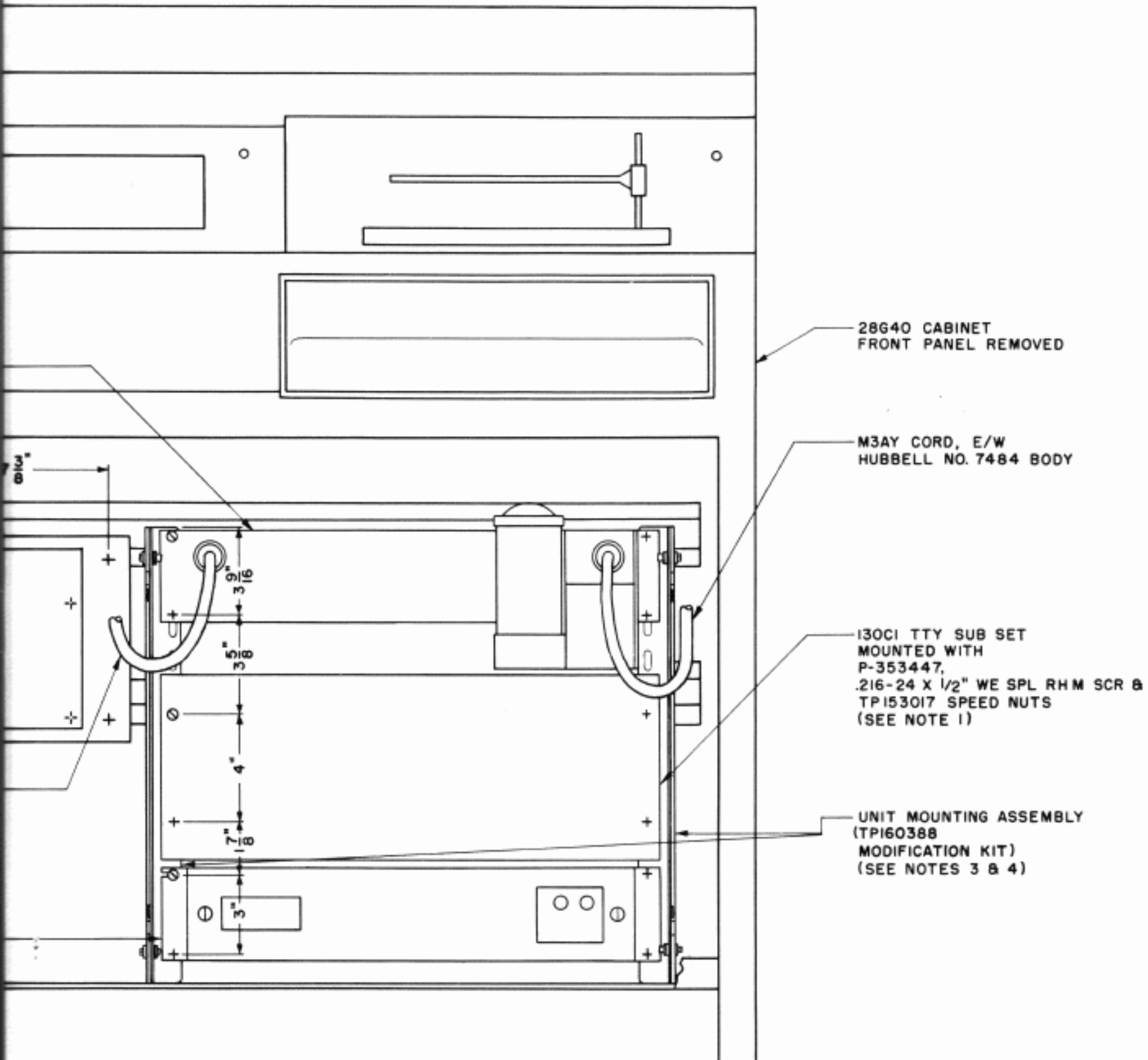


FIG. 1

28ASR TTY IN 28G40 CABINET
PRIVATE LINE SERVICE AND ATTENDED OR
UNATTENDED TWX SERVICE
130C1 TTY SUB SET