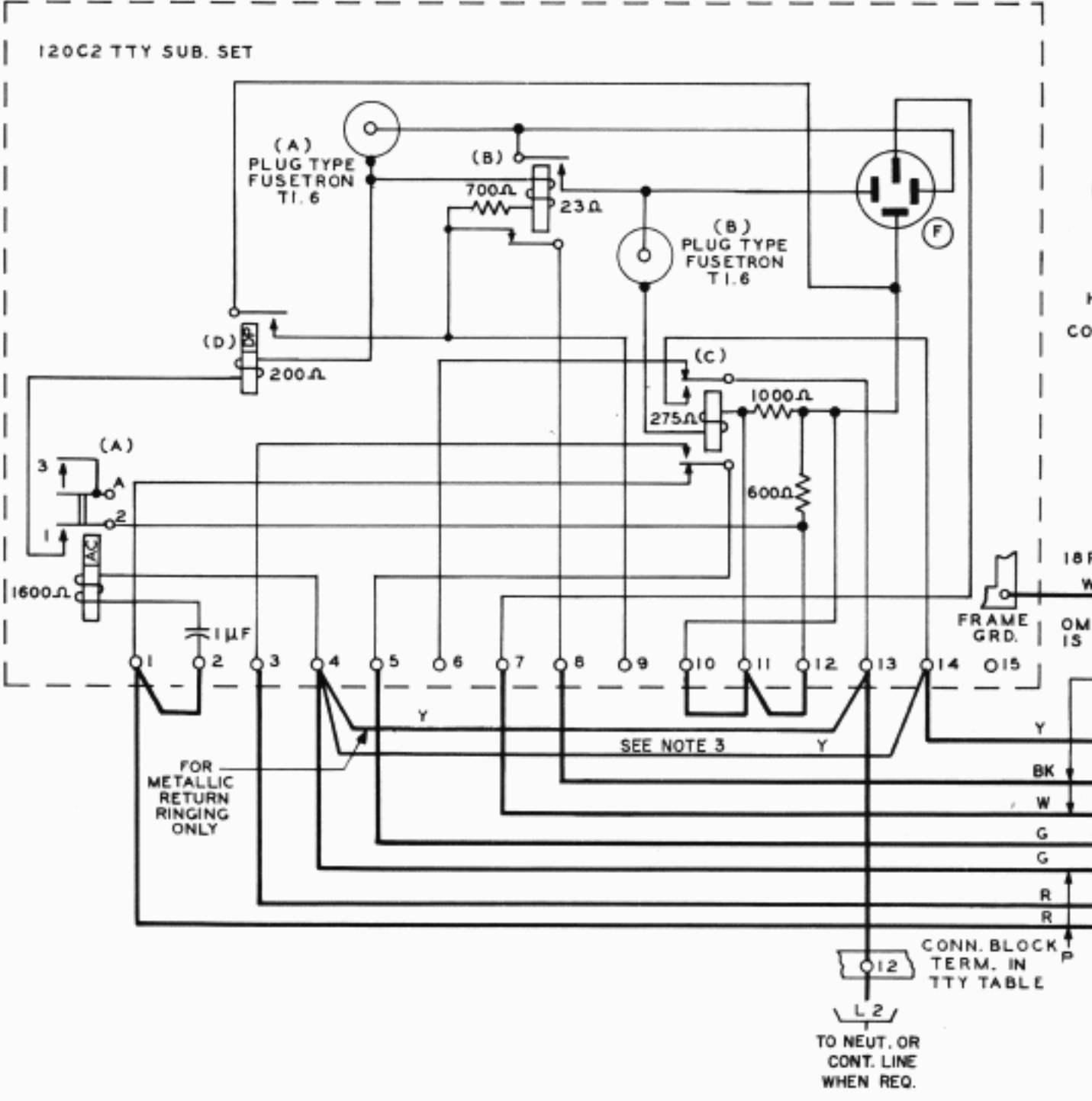
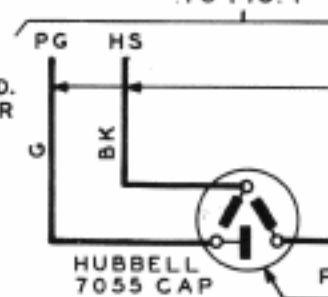
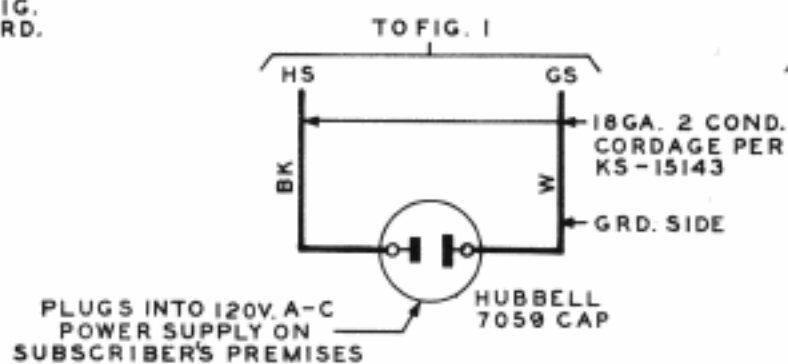
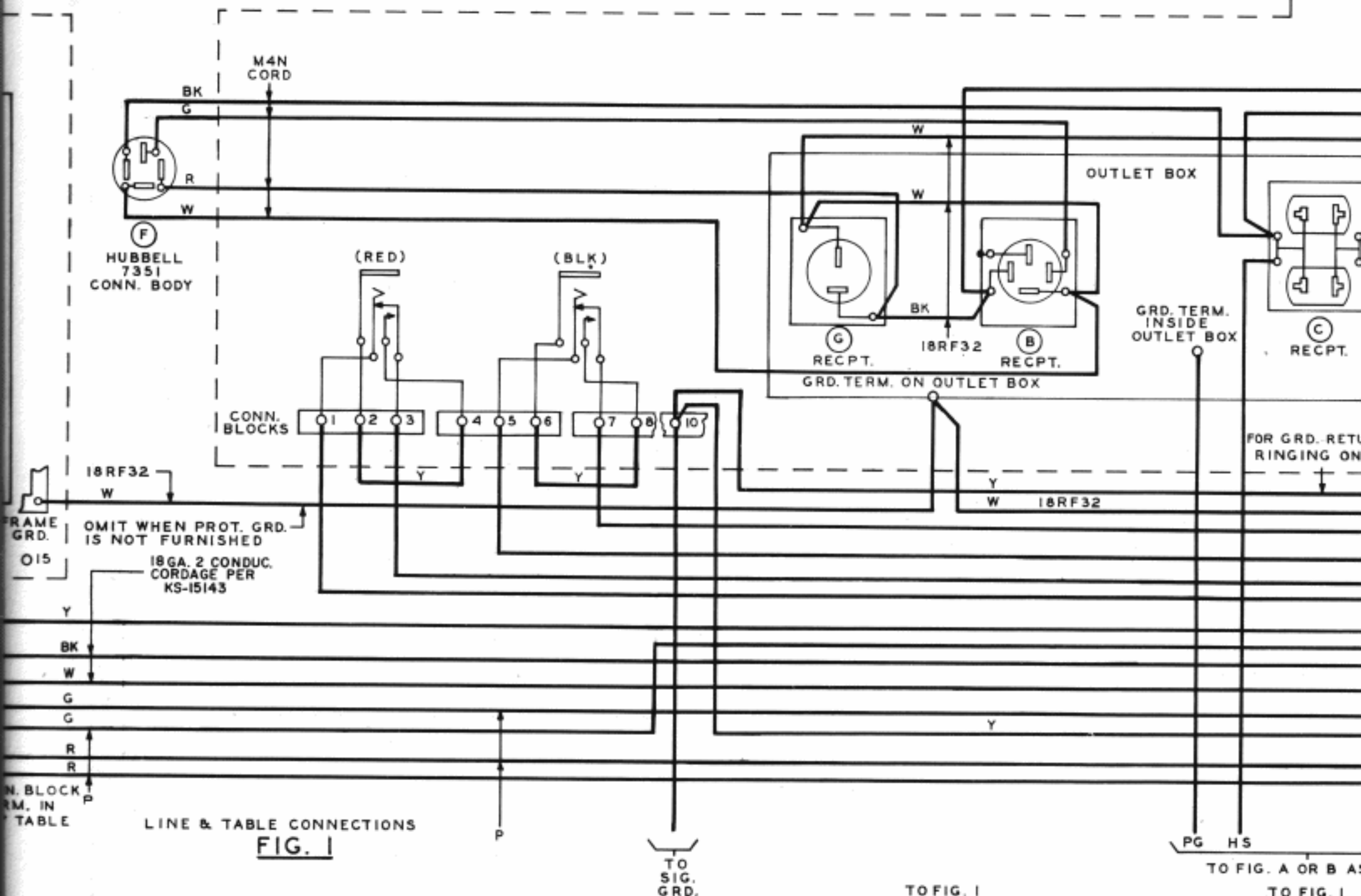
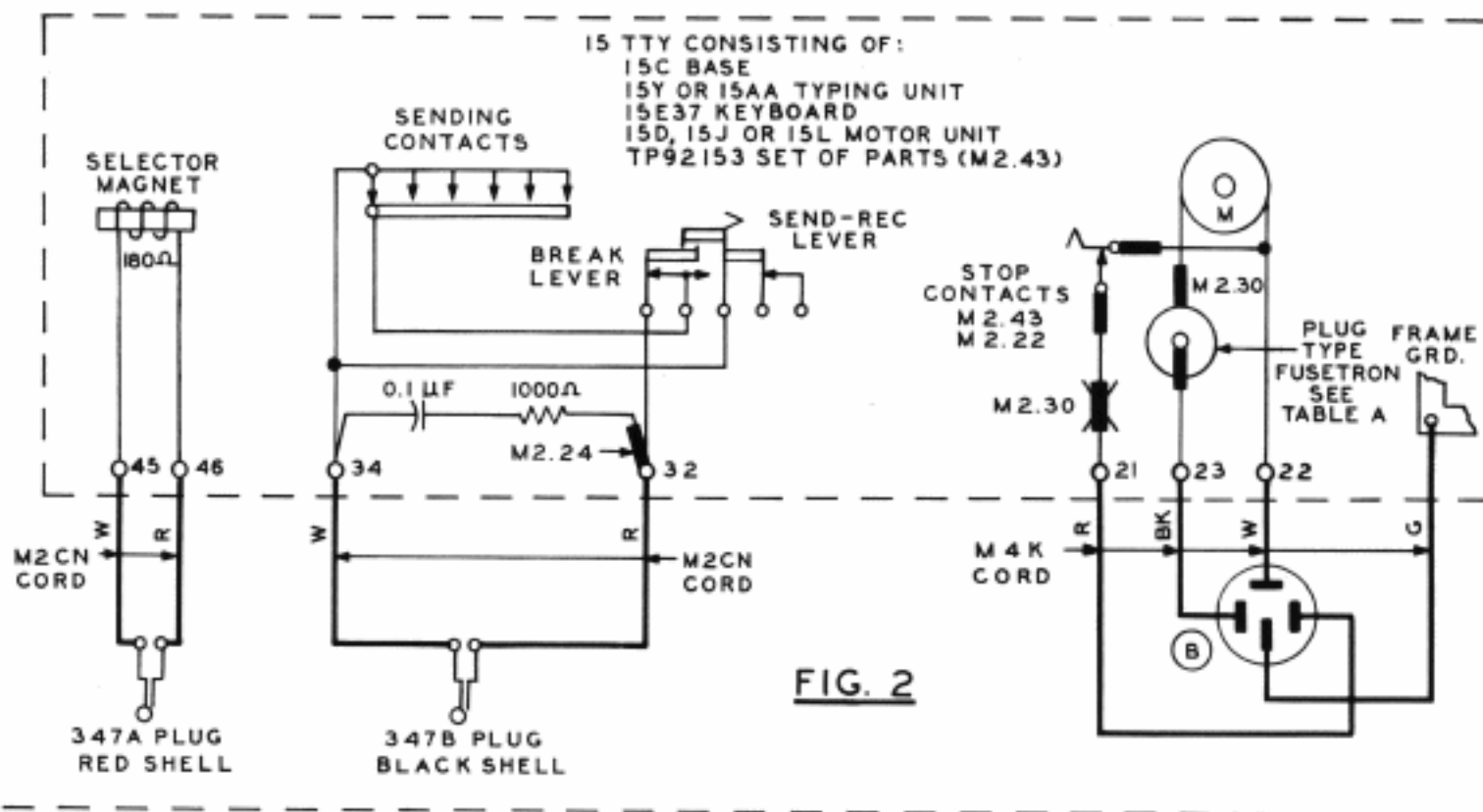
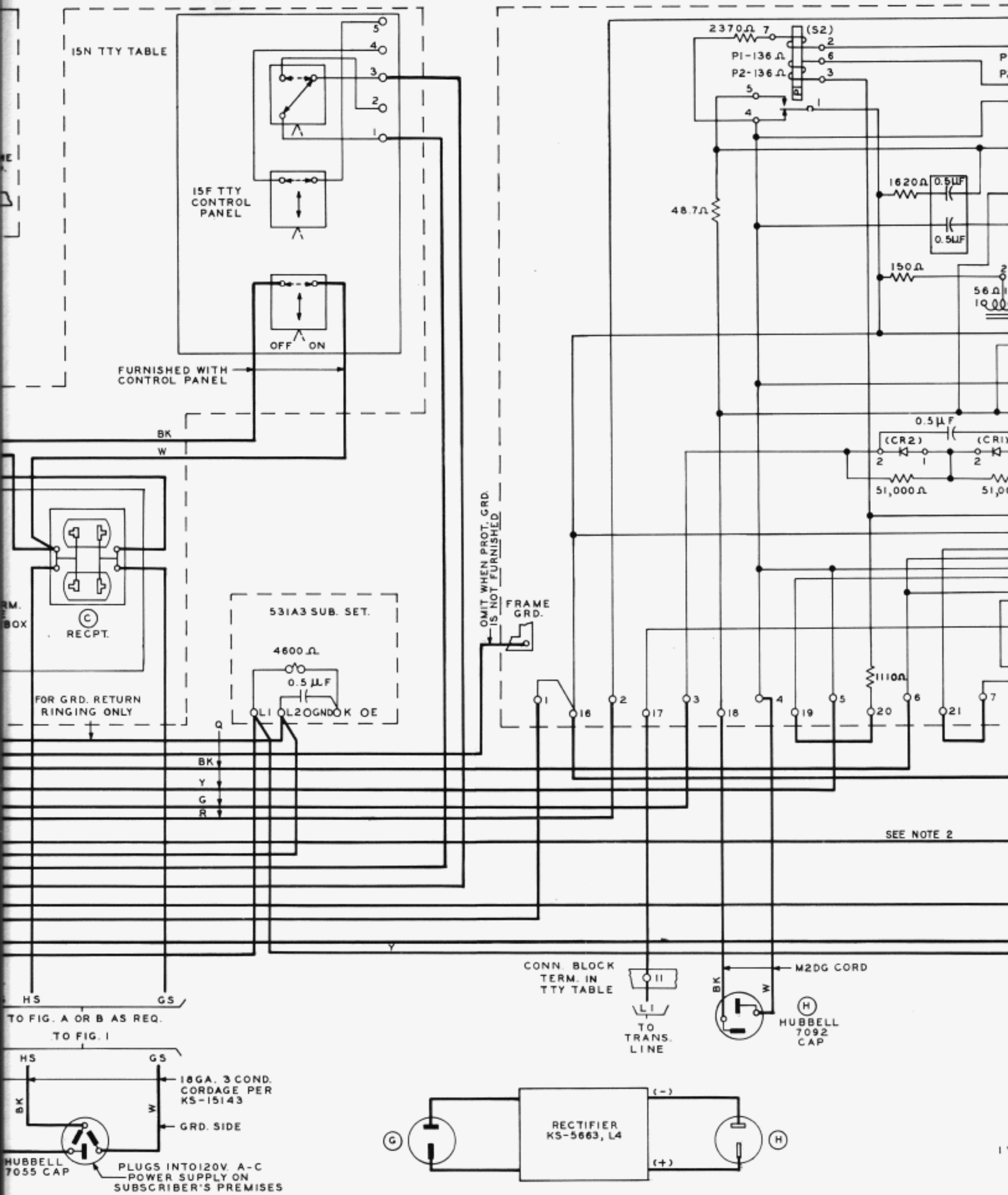


STATION IDENTIFICATION







TO FIG. A OR B AS REQ.
TO FIG. I

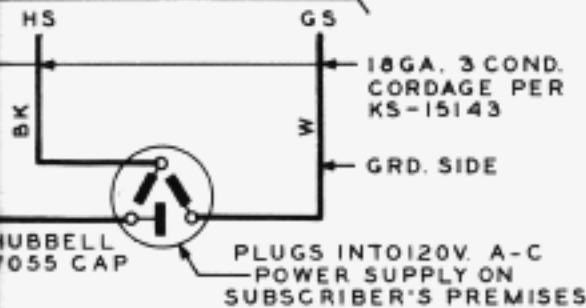


FIG. B

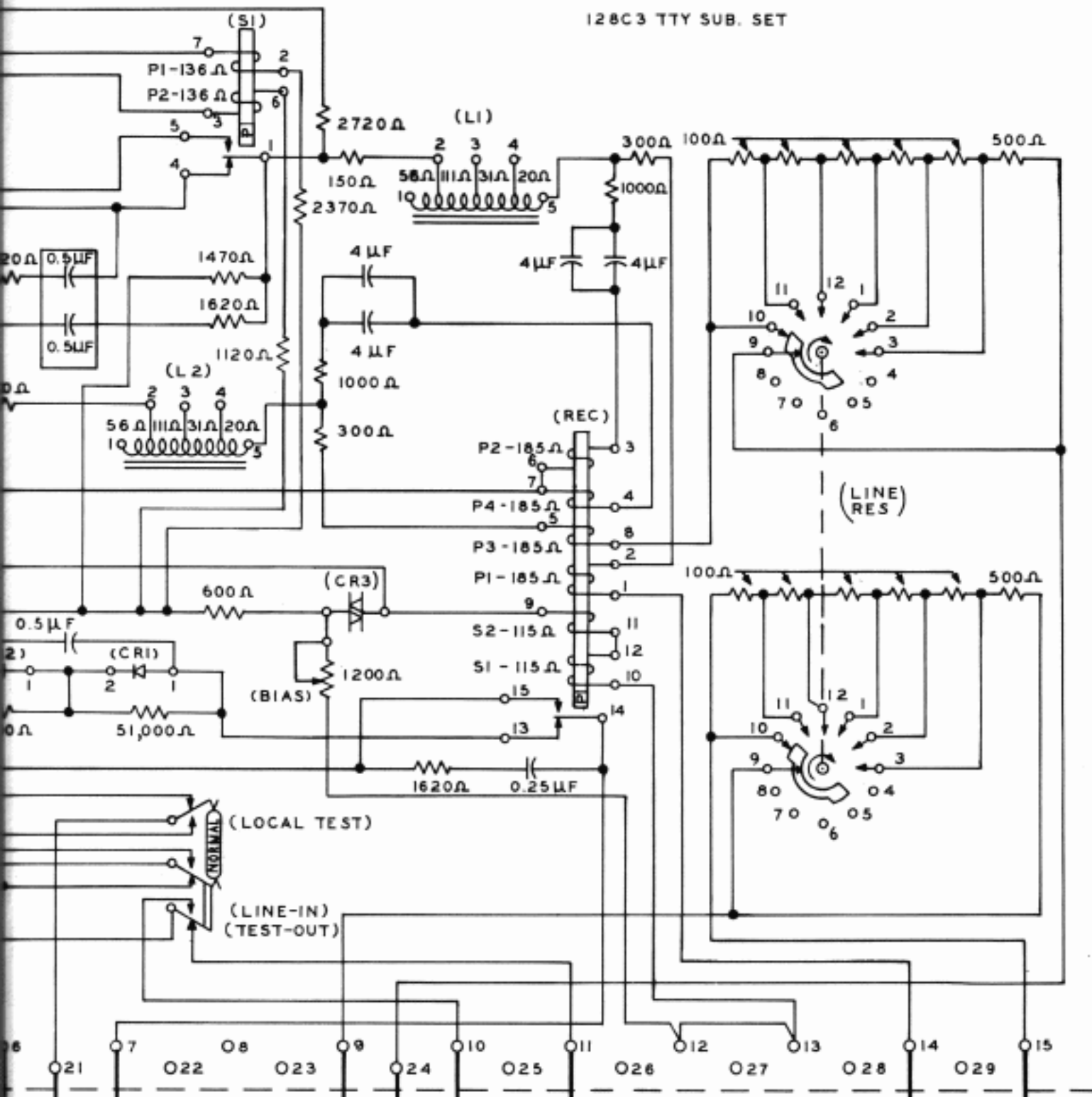
BELL SYSTEM PRACTICES
TELETYPEWRITER STATIONS

128C3 TTY SUB. SET

SECTION P9
ISSUE: 3 MAR
AT&TCO STAN
MOTOR FUSE
A-C SYNCH T
A-C SER T

TABLE

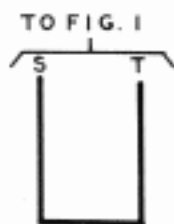
PLANS US	
M2.21	M2
M2.22	
M2.24	
M2.30	



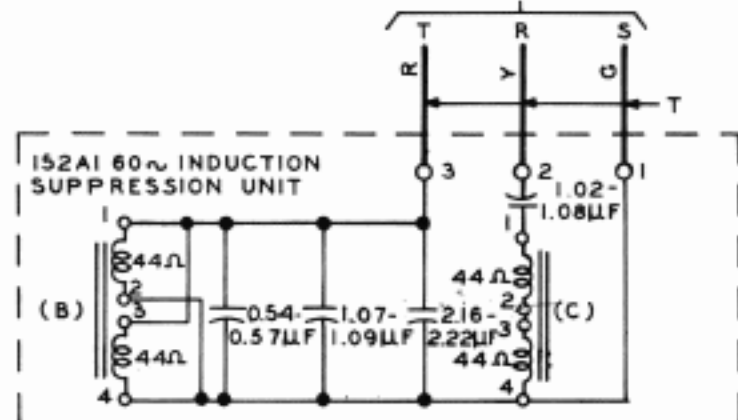
NOTE 2

NOTES:

1. ALL COLORED WIRES UNLESS OTHERWISE SPECIFIED ARE 22 GAUGE BROWN TYPE GS STATION WIRE, PER AT&TCO SPEC. 7089.
2. THE YELLOW WIRE BETWEEN TERMINAL 14 (120 C2 SET) AND TERMINAL 24 (128 C3 SET) IS REQUIRED ONLY FOR SINGLE STATION OPERATION WITH A NEUTRALIZING CONDUCTOR.
3. THE YELLOW WIRE BETWEEN TERMINAL 4 AND 14 (120 C2 SET) IS REQUIRED ONLY FOR 2 WIRE MULTI-STATION OPERATION WITH A CONTROL CONDUCTOR.



2 WIRE OPERATION
OR
1 WIRE OPERATION WITHOUT
60~ SUPPRESSION
FIG. C



1 WIRE OPERATION WITH 60~ SUPPRESSION
FIG. D

128C3 TTY SUB. SET
UNATTENDED TWX SERV
15N TTY TABLE

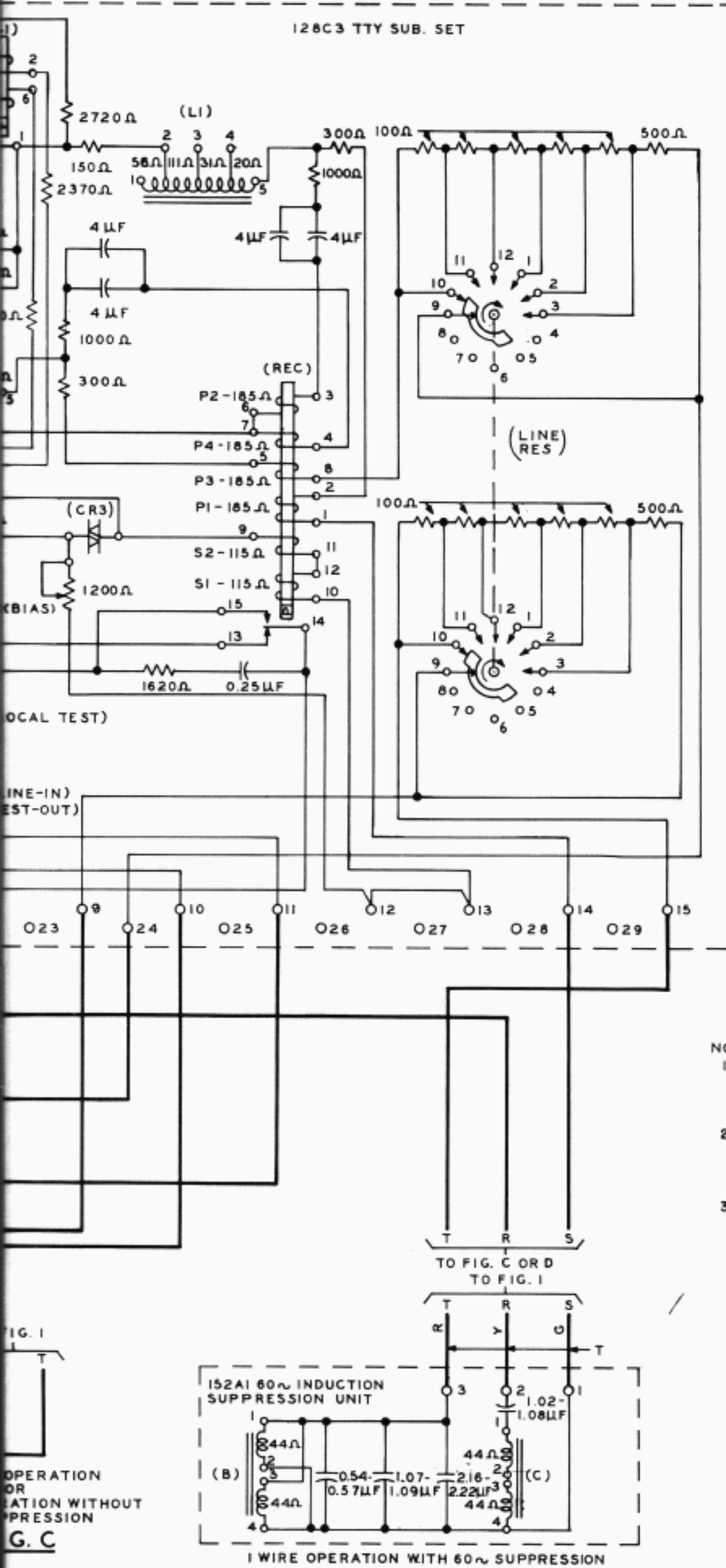
BELL SYSTEM PRACTICES
TELETYPEWRITER STATIONS

SECTION P90.516
ISSUE: 3 MARCH 1954
AT&TCO STANDARD

MOTOR	FUSETRON
A-C SYNCH	T3.2
A-C SER	T1.6

TABLE A

PLANS USED	
M2.21	M2.43
M2.22	
M2.24	
M2.30	



- NOTES:**
1. ALL COLORED WIRES UNLESS OTHERWISE SPECIFIED ARE 22 GAUGE BROWN TYPE GS STATION WIRE, PER AT&TCO SPEC. 7089.
 2. THE YELLOW WIRE BETWEEN TERMINAL 14 (120C2 SET) AND TERMINAL 24 (128C3 SET) IS REQUIRED ONLY FOR SINGLE STATION OPERATION WITH A NEUTRALIZING CONDUCTOR.
 3. THE YELLOW WIRE BETWEEN TERMINAL 4 AND 14 (120C2 SET) IS REQUIRED ONLY FOR 2 WIRE MULTI-STATION OPERATION WITH A CONTROL CONDUCTOR.

128C3 TTY SUB. SET
UNATTENDED TWX SERVICE
15N TTY TABLE

FIG. D