

FIG. 1

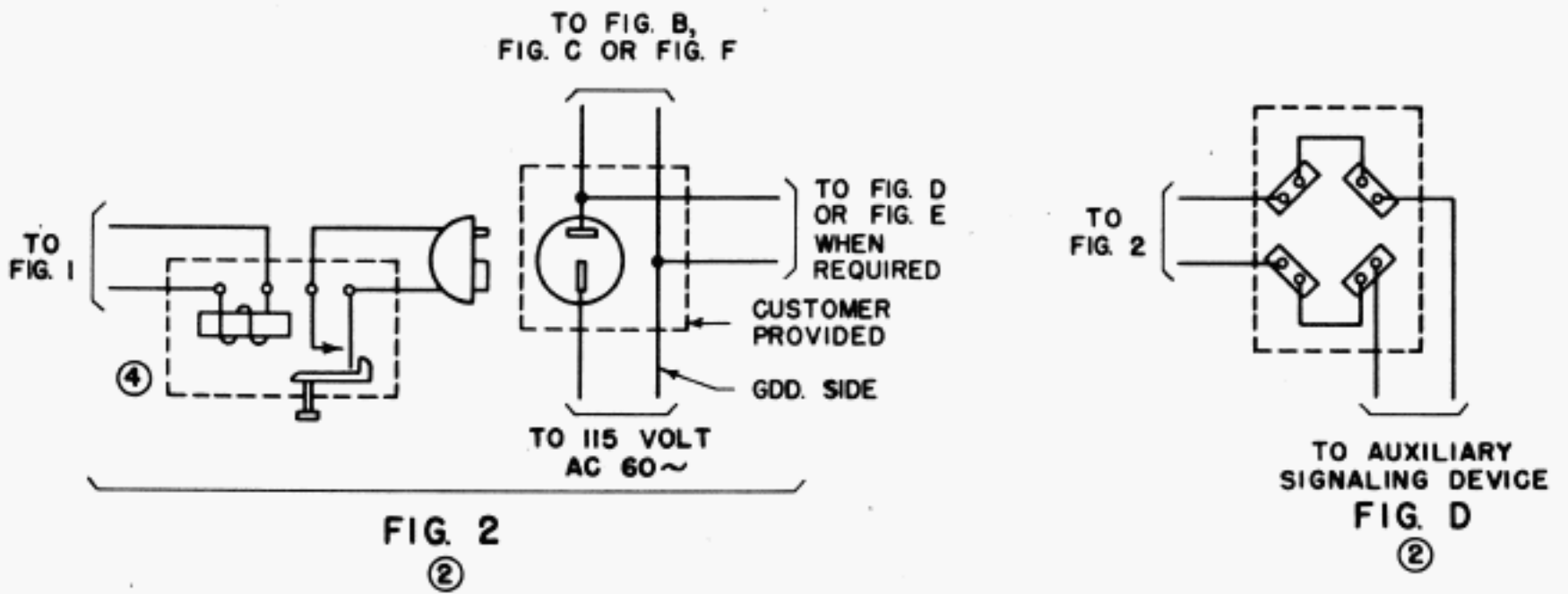
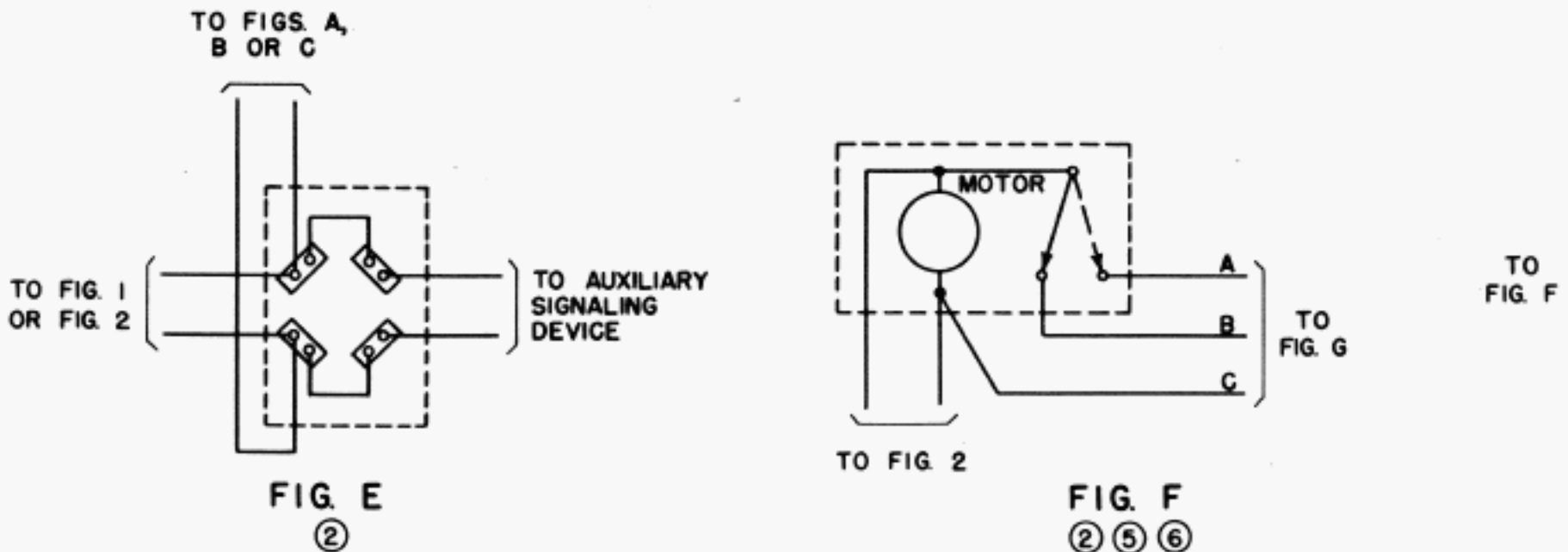
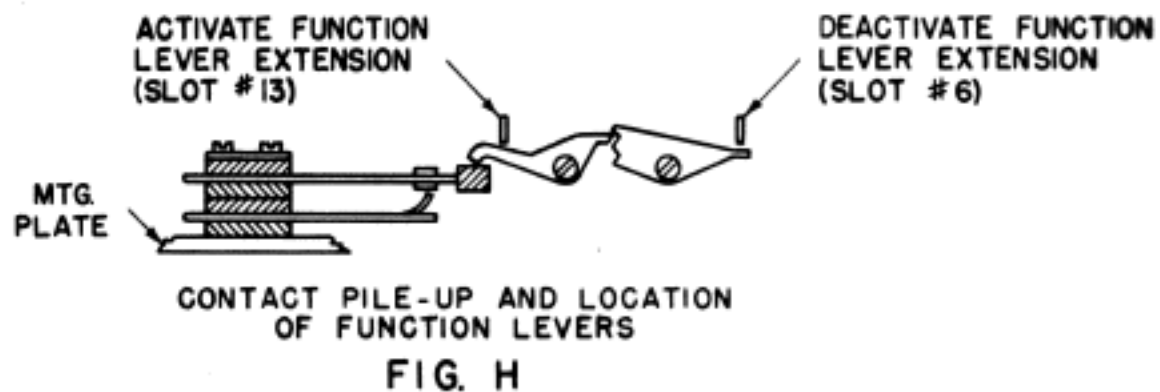
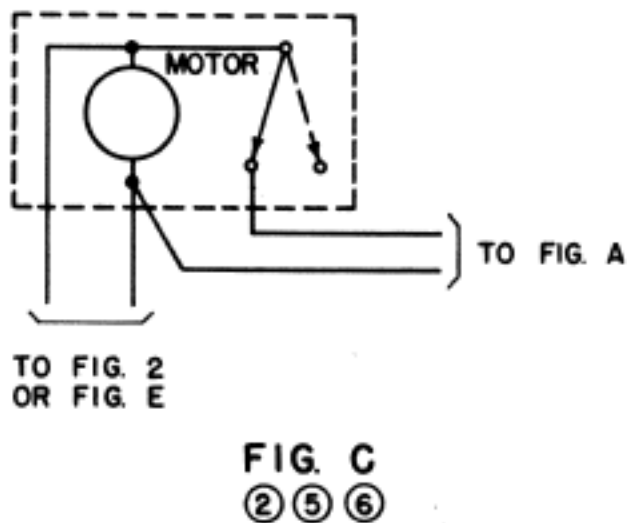
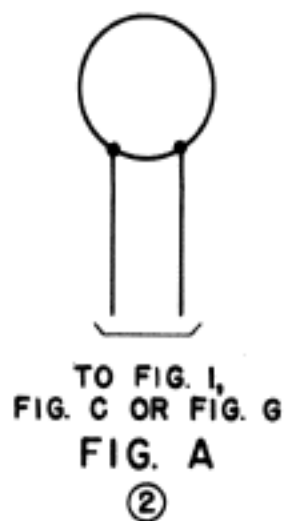
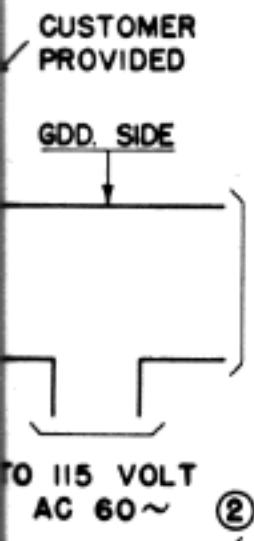


FIG. 2





LIST OF MATERIAL

REGULAR OR SPARE TELETYPEWRITER (FIG. 1)

- 1-96807M SET OF PARTS
- 1-91885M BLOCKING PLATE (SEE NOTE 3)
- 1-FUNCTION LEVER FOR 96807M PARTS TO CLOSE CONTACT ON SPECIFIED CHARACTER (SEE NOTE 3)
- 1-DITTO TO OPEN CONTACTS ON LETTERS
- 1-95088M SET OF PARTS
- 1-HUBBELL 7092 CAP
- 18 GA. TIREX AS REQUIRED

FIGURE 2

- 1-RIC-H2 SEM RELAY (115 VOLT AC 60~)
- 1-KS-7993 OR KS-7585 CORD

FIGURE A

- 1-KS-8547 LIST 3 OR LIST 4 BELL (SINGLE SOUND)

FIGURE B

- 1-KS-8547 LIST 1 OR LIST 2 BELL (VIBRATING)

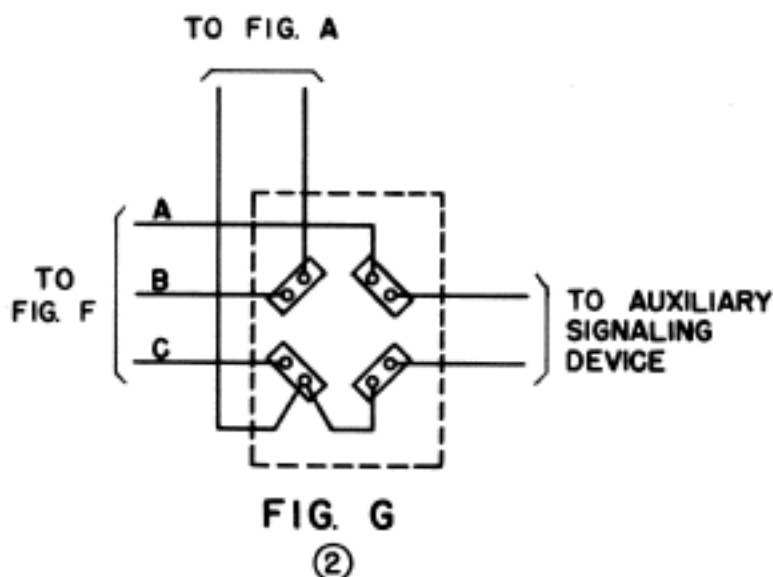
FIGURE C AND FIGURE F

- 1-#3-61A2 SANGAMO FLASHER

- FIGURE D } 1-CROUSE-HINDS CB 1124 CONN. BLOCK

- FIGURE E } 1-GRAYBAR 52151 OUTLET BOX

- FIGURE G } 1-GRAYBAR 5201 COVER



BELL SYSTEM PRACTICES
TELETYPEWRITER STATION
INSTALLATION & MAINTENANCE

SECTION P90.949
ISSUE A JAN. 1948
LONG LINES DEPT.
DIST. CLASS 400AC
" " 600AC

DEACTIVATE FUNCTION
LEVER EXTENSION
(SLOT #6)

ATION

MATERIAL

ARE TELETYPEWRITER (FIG. 1)

OF PARTS

ING PLATE (SEE NOTE 3)

VER FOR 96807M PARTS TO CLOSE

SPECIFIED CHARACTER (SEE NOTE 1)

EN CONTACTS ON LETTERS

OF PARTS

2 CAP

AS REQUIRED

RELAY (115 VOLT AC 60~)

KS-7585 CORD

3 OR LIST 4 BELL (SINGLE STROKE)

1 OR LIST 2 BELL (VIBRATING)

FIGURE F

RAMO FLASHER

HOUSE-HINDS CB 1124 CONN. BLOCK

RAYBAR 5215I OUTLET BOX

RAYBAR 52CI COVER

FEATURE	FIG.	1	2	A	B	C	D	E	F	G
SINGLE STROKE BELL		X		X						
SINGLE STROKE BELL WITH LAMP FOLLOWING BELL SIGNALS		X		X				X		
INTERMITTANT SINGLE STROKE BELL		X	X	X		X				
INTERMITTANT SINGLE STROKE BELL WITH STEADY LAMP FOR CUSTOMER FLASHER		X	X	X		X		X		
VIBRATING BELL		X	X		X					
VIBRATING BELL WITH STEADY LAMP FOR CUSTOMER FLASHER		X	X		X		X			
INTERMITTANT SINGLE STROKE BELL WITH FLASHING LAMP		X	X	X					X	X

NOTES

- 1 FUNCTION LEVERS TO OPERATE THESE CONTACTS SHALL BE AS SPECIFIED IN THE SERVICE ORDER.
- 2 APPROVED PERMANENT POWER WIRING IN ACCORDANCE WITH UNDERWRITER'S RULES AND LOCAL REGULATIONS FOR THE CHARACTER OF THE ATMOSPHERE FOR THE PARTICULAR INSTALLATION. TO BE PROVIDED BY THE CUSTOMER.
- 3 REQUIRED IF PRINTING AND SPACING IS DESIRED ON THE SELECTING CHARACTER.
- 4 MOUNT ON RIGHT SIDE OF TTY TABLE WITH RESTORE KNOB AT BOTTOM.
- 5 MOUNT NEAR POWER WIRING OUTLET INTO WHICH TTY CONTACT AND RELAY CCTS. CONNECT AND MAKE CONNECTIONS AS SHORT AS POSSIBLE.
- 6 ADJUST TO DESIRED FREQUENCY WITHIN RANGE OF UNIT (15-30 PER MINUTE)

SIGNALING ARRANGEMENT

NO. 15 TTY

REMOTE GONG WITH OPTIONAL
AUXILIARY SIGNALING DEVICE
OPERATED FROM UPPER CASE
CONTACTS

115 VOLT AC 60 CYCLE