

CHANGES AND ADDITIONS  
TO BULLETINS 1028B (ISSUE 2), 1030B (ISSUE 2) AND 1031B (ISSUE 3)  
MODEL 14 TYPE BAR TAPE PRINTER (FP) - PARTS

The 6908 and 75488 base plate assemblies have been replaced by a 105601 base plate assembly. The main bail bracket mounting holes and the type bar segment mounting holes of the new style base have been increased in diameter to facilitate concentric positioning of these assemblies. Locating links are provided at the two outer mounting holes for the main bail bracket and type bar segment on the under side of the base plate. Screws with notched heads are used for fastening the positioning links after they are properly adjusted. Four holes, 3/8" dia., have been provided to permit access to the screws mounting the pull bar spring plates. Another hole for positioning a locating gauge has also been included. See Figure 1.

To enable concentric positioning of the main bail and code bars, a 124479 locating gauge has been provided for use in repair shops. See Figure 2. This gauge, however, may be used only with the new style bases which include the hole for positioning the gauge.

The 91899 type bar segment with posts (formerly 6890) retains its original number but has been redesigned with a square fulcrum rod slot instead of a radial slot. The radius of the segment shoulder, against which the spring plates rest, has been decreased to obtain closer adjustment for the pull bar-type bar engagement. The 6825 spring bracket has been redesigned to correspond and also retains its original number.

The two 6826 spring brackets have been replaced by one 124146 bracket-left and one 124147 bracket-right.

The 6746 hex head screws and 7002 washers used to secure the 6825, 124146 and 124147 spring brackets have been replaced by 151658 button head screws and 8330 washers to allow greater adjustment.

The 7037 spacer washers have been replaced by 124148 spacer washers. New style spacer washers can only be used with new style type bar segment.

The type bars have been modified with a contour change at the pallet end. This change effects only the appearance of the type bar, and since old and new style type bars are interchangeable and can be readily identified, old part numbers have been retained.

A modified type bar backstop with a .095" thick sirvene strip has been assigned Part No. 135268 and is for use only with all new style type bars (contour changed at pallet end). The 124535 backstop with .125" thick sirvene strip (illustrated in 833EE) will still be used with all old style or with mixed old and new style type bars since the modified backstop would cause interference between the tails of the old style type bars and adjacent pull bars.

To improve main clutch operation on units incorporating a 74502 driven clutch (formerly 6840) and operating at 75 wpm, the 6993 clutch spring has been replaced by a 122059 clutch spring. The 6993 spring is still used

on units operating at 60 wpm. For identification the 122059 spring has one full turn at one end painted yellow.

The 113693 set of parts to provide an oil shield for a holding magnet selector is now available. See Figure 3 for parts ordering information.

New and old style parts are interchangeable, except as noted.

\*

\*

\*

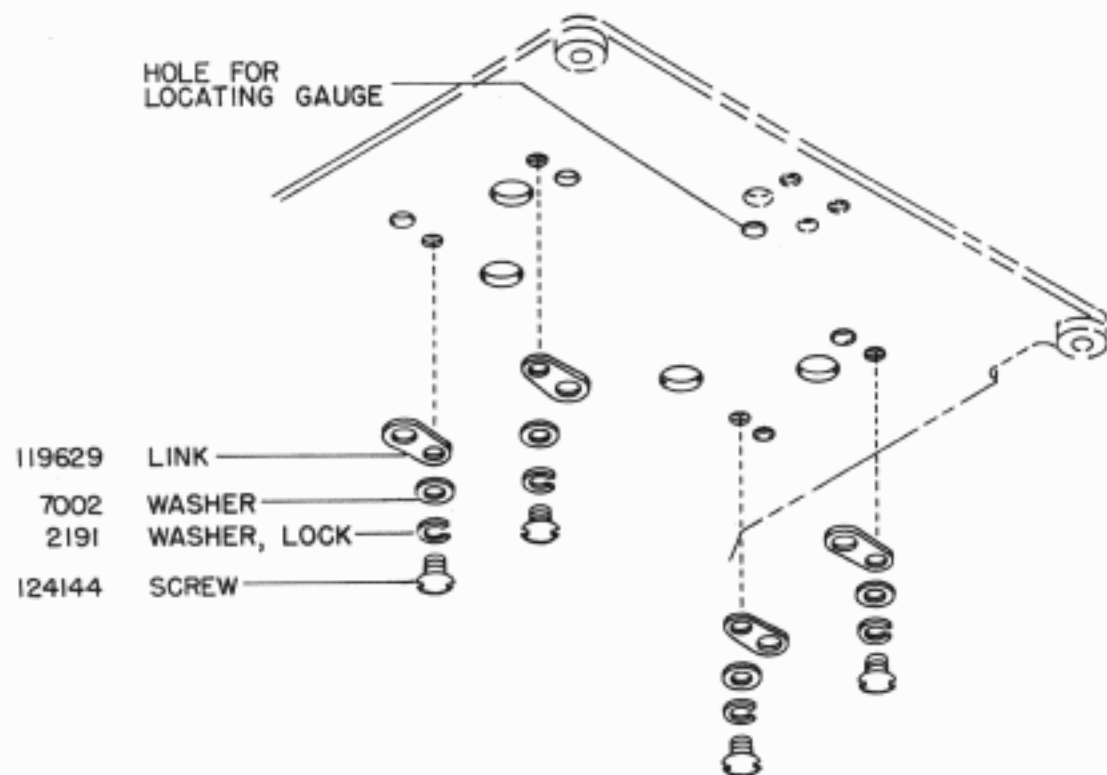
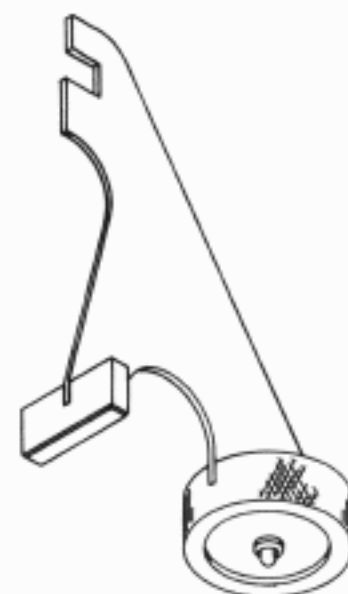
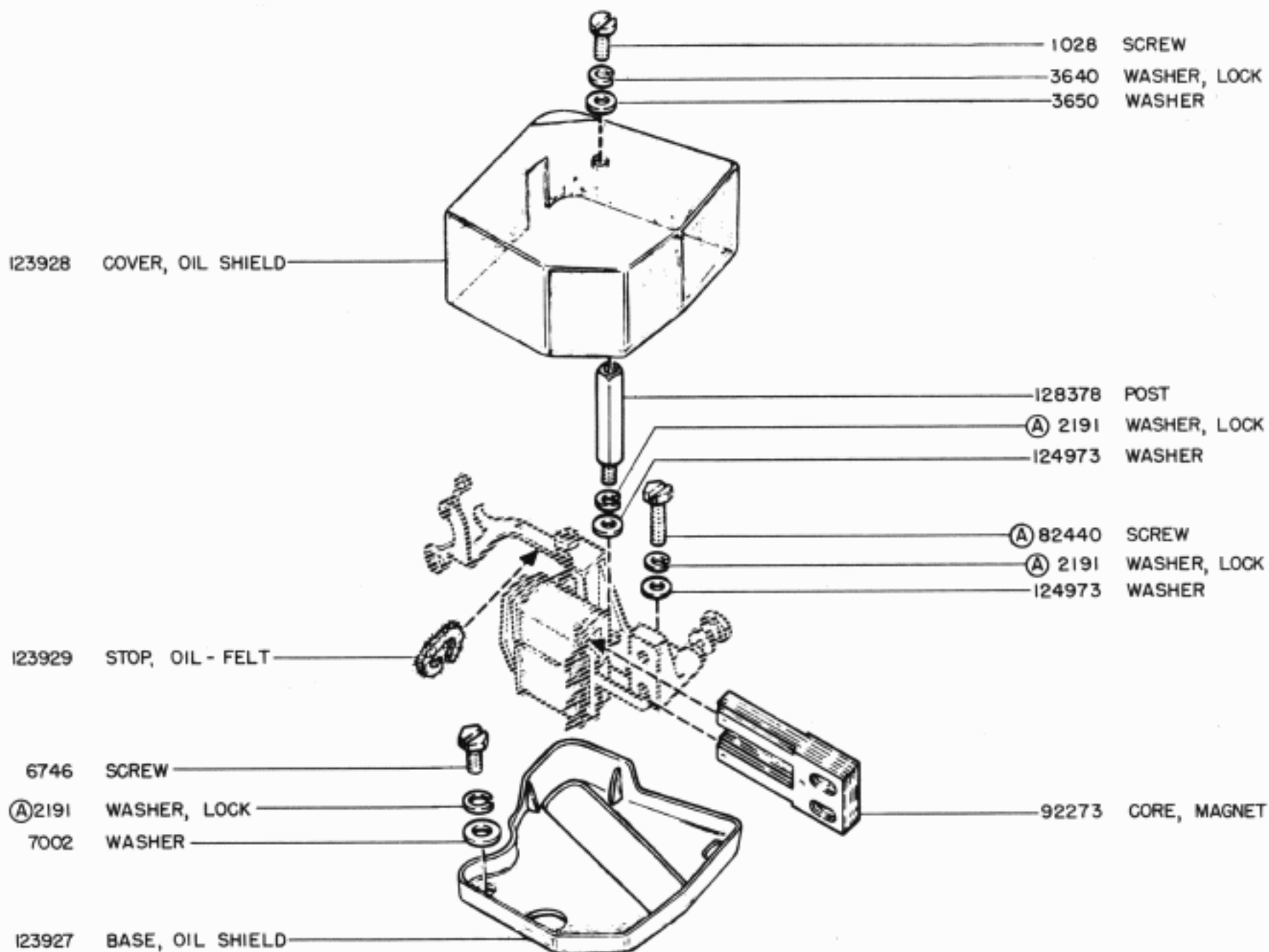


FIGURE 1



124479 LOCATING GAUGE

FIGURE 2



113693 SET OF PARTS TO PROVIDE AN OIL SHIELD FOR THE HOLDING MAGNET SELECTOR  
(EXCLUDES PARTS MARKED (A))

FIGURE 3