



TELETYPE UNIT

UNIT

UNIT

TELETYPE CORPORATION

UNIT - New York, N.Y.

TELETYPE[®]
CORPORATION

UNIT - TELETYPE UNIT

UNIT - TELETYPE UNIT



TELETYPE UNIT

1962
UNITED STATES
COMMUNICATIONS COMMISSION
FORM 100 (Rev. 10-15-61)

TELETYPE[®]
CORPORATION

10000 WASHINGTON AVENUE, SUITE 1000, WASHINGTON, D.C. 20037

TELETYPE UNIT 10000 WASHINGTON AVENUE, SUITE 1000, WASHINGTON, D.C. 20037

TELETYPE UNIT 10000 WASHINGTON AVENUE, SUITE 1000, WASHINGTON, D.C. 20037

TELETYPE UNIT 10000 WASHINGTON AVENUE, SUITE 1000, WASHINGTON, D.C. 20037

TABLE 10.1

TABLE 10.1

Year	Value
2000	1000
2001	1000
2002	1000
2003	1000

Table of Contents

1701	SECTION - GENERAL CONTRACTOR WORK	1701
1701.01	General Contracting Work - 20% Retention	1701.01
1701.02	General Contracting Work - 10% Retention	1701.02
1701.03	General Contracting Work - 5% Retention	1701.03
1701.04	General Contracting Work - 0% Retention	1701.04
1701.05	General Contracting Work - 15% Retention	1701.05
1701.06	General Contracting Work - 25% Retention	1701.06
1701.07	General Contracting Work - 30% Retention	1701.07
1701.08	General Contracting Work - 35% Retention	1701.08
1701.09	General Contracting Work - 40% Retention	1701.09
1701.10	General Contracting Work - 45% Retention	1701.10
1701.11	General Contracting Work - 50% Retention	1701.11
1701.12	General Contracting Work - 55% Retention	1701.12
1701.13	General Contracting Work - 60% Retention	1701.13
1701.14	General Contracting Work - 65% Retention	1701.14
1701.15	General Contracting Work - 70% Retention	1701.15
1701.16	General Contracting Work - 75% Retention	1701.16
1701.17	General Contracting Work - 80% Retention	1701.17
1701.18	General Contracting Work - 85% Retention	1701.18
1701.19	General Contracting Work - 90% Retention	1701.19
1701.20	General Contracting Work - 95% Retention	1701.20
1701.21	General Contracting Work - 100% Retention	1701.21
1702	SECTION - OTHER CONTRACTOR WORK	1702
1702.01	Other Contracting Work - 20% Retention	1702.01
1702.02	Other Contracting Work - 10% Retention	1702.02
1702.03	Other Contracting Work - 5% Retention	1702.03
1702.04	Other Contracting Work - 0% Retention	1702.04
1702.05	Other Contracting Work - 15% Retention	1702.05
1702.06	Other Contracting Work - 25% Retention	1702.06
1702.07	Other Contracting Work - 30% Retention	1702.07
1702.08	Other Contracting Work - 35% Retention	1702.08
1702.09	Other Contracting Work - 40% Retention	1702.09
1702.10	Other Contracting Work - 45% Retention	1702.10
1702.11	Other Contracting Work - 50% Retention	1702.11
1702.12	Other Contracting Work - 55% Retention	1702.12
1702.13	Other Contracting Work - 60% Retention	1702.13
1702.14	Other Contracting Work - 65% Retention	1702.14
1702.15	Other Contracting Work - 70% Retention	1702.15
1702.16	Other Contracting Work - 75% Retention	1702.16
1702.17	Other Contracting Work - 80% Retention	1702.17
1702.18	Other Contracting Work - 85% Retention	1702.18
1702.19	Other Contracting Work - 90% Retention	1702.19
1702.20	Other Contracting Work - 95% Retention	1702.20
1702.21	Other Contracting Work - 100% Retention	1702.21

TOTAL RETENTION PERCENT		
General Contracting Work	20%	10%
Other Contracting Work	10%	5%
Total	30%	15%

NOTES:
1. The above schedule of work is subject to change without notice.
2. The above schedule of work is subject to change without notice.



FIGURE 10. THE HOUSE OF FUTURE/STREET ARCHITECTURE CENTER

SECTION I**PLANNING AND ESTIMATION**



FIG. 1. MECHANICAL ASSEMBLY

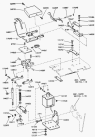


FIGURE 10. REPRODUCTIVE AND DIGESTIVE SYSTEM.

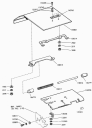


FIGURE 1. HAND SAW ASSEMBLY



FIGURE 1. FOREGUT OF LARVA



FIGURE 1.1. ANATOMY OF THE HEAD AND NECK

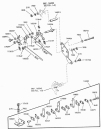


FIGURE 10. NETWORK



FIGURE 1. 200-1000

PUMP AND MOTOR



FIGURE 1. 1988

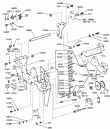
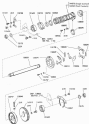


FIGURE 10. PUMP/ENGINE



MECHANICAL ASSEMBLY

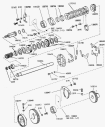


FIGURE 1. ENGINE, CHASSIS

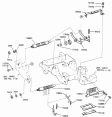


Figure 1. Network of connections.

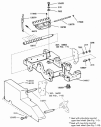


FIGURE 1.10. MICROSCOPE



FIGURE 11.1. COMPLETE BASE

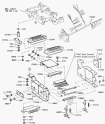


FIGURE 10.10.10. (continued)

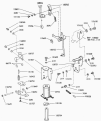


FIG. 1. EXPLODED VIEW OF THE MECHANISM AND ITS MAIN PARTS.

FIG. 2. DETAIL OF THE MECHANISM.



FIGURE 1. DISTRIBUTION OF THE SPECIES 'S. ...' IN 1988.

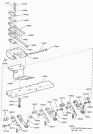


FIG. 10. Schematic diagram of the atmospheric circulation response to a positive I_{rms} .

101
 102
 103
 104
 105
 106
 107
 108
 109
 110
 111
 112
 113
 114
 115
 116
 117
 118
 119
 120
 121
 122
 123
 124
 125
 126
 127
 128
 129
 130
 131
 132
 133
 134
 135
 136
 137
 138
 139
 140
 141
 142
 143
 144
 145
 146
 147
 148
 149
 150
 151
 152
 153
 154
 155
 156
 157
 158
 159
 160
 161
 162
 163
 164
 165
 166
 167
 168
 169
 170
 171
 172
 173
 174
 175
 176
 177
 178
 179
 180
 181
 182
 183
 184
 185
 186
 187
 188
 189
 190
 191
 192
 193
 194
 195
 196
 197
 198
 199
 200

201
 202
 203
 204
 205
 206
 207
 208
 209
 210
 211
 212
 213
 214
 215
 216
 217
 218
 219
 220
 221
 222
 223
 224
 225
 226
 227
 228
 229
 230
 231
 232
 233
 234
 235
 236
 237
 238
 239
 240
 241
 242
 243
 244
 245
 246
 247
 248
 249
 250
 251
 252
 253
 254
 255
 256
 257
 258
 259
 260
 261
 262
 263
 264
 265
 266
 267
 268
 269
 270
 271
 272
 273
 274
 275
 276
 277
 278
 279
 280
 281
 282
 283
 284
 285
 286
 287
 288
 289
 290
 291
 292
 293
 294
 295
 296
 297
 298
 299
 300

301
 302
 303
 304
 305
 306
 307
 308
 309
 310
 311
 312
 313
 314
 315
 316
 317
 318
 319
 320
 321
 322
 323
 324
 325
 326
 327
 328
 329
 330
 331
 332
 333
 334
 335
 336
 337
 338
 339
 340
 341
 342
 343
 344
 345
 346
 347
 348
 349
 350
 351
 352
 353
 354
 355
 356
 357
 358
 359
 360
 361
 362
 363
 364
 365
 366
 367
 368
 369
 370
 371
 372
 373
 374
 375
 376
 377
 378
 379
 380
 381
 382
 383
 384
 385
 386
 387
 388
 389
 390
 391
 392
 393
 394
 395
 396
 397
 398
 399
 400

401
 402
 403
 404
 405
 406
 407
 408
 409
 410
 411
 412
 413
 414
 415
 416
 417
 418
 419
 420
 421
 422
 423
 424
 425
 426
 427
 428
 429
 430
 431
 432
 433
 434
 435
 436
 437
 438
 439
 440
 441
 442
 443
 444
 445
 446
 447
 448
 449
 450
 451
 452
 453
 454
 455
 456
 457
 458
 459
 460
 461
 462
 463
 464
 465
 466
 467
 468
 469
 470
 471
 472
 473
 474
 475
 476
 477
 478
 479
 480
 481
 482
 483
 484
 485
 486
 487
 488
 489
 490
 491
 492
 493
 494
 495
 496
 497
 498
 499
 500

The first part of the document discusses the importance of maintaining accurate records of all transactions and activities. This includes not only financial data but also operational and personnel information. The goal is to ensure that all data is reliable and can be used for analysis and decision-making.

The second part of the document outlines the procedures for data collection, storage, and retrieval. This involves establishing clear protocols for how data is entered into the system, how it is stored, and how it can be accessed by authorized personnel.

The third part of the document describes the methods for analyzing the data and generating reports. This includes identifying trends, patterns, and anomalies in the data, and using this information to inform business strategy and operations.

The fourth part of the document discusses the importance of data security and privacy. This involves implementing robust security measures to protect sensitive information from unauthorized access, disclosure, or destruction. It also includes policies and procedures for handling personal data in compliance with applicable laws and regulations.

The fifth part of the document outlines the process for continuous improvement and evaluation of the data management system. This involves regularly reviewing the system's performance, identifying areas for improvement, and implementing changes to enhance its effectiveness and efficiency.

In conclusion, the document emphasizes the critical role of data in the success of any organization. By following the outlined procedures and best practices, organizations can ensure that their data is accurate, secure, and effectively used to drive growth and innovation.

The final part of the document provides a summary of the key points discussed and offers recommendations for further action. This includes identifying the next steps for implementing the data management system, addressing any outstanding issues, and ensuring that all stakeholders are aware of their roles and responsibilities.

The document concludes by reiterating the importance of a strong data management strategy for long-term organizational success and sustainability.

SECTION 2

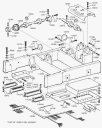


FIGURE 10.1. 3D MODEL

MEMORANDUM FOR THE RECORD

MEMORANDUM FOR THE RECORD

TO: SAC, NEW YORK
FROM: SAC, NEW YORK
SUBJECT: [Illegible]

TO: SAC, NEW YORK

FROM: SAC, NEW YORK

TO: SAC, NEW YORK

FROM: SAC, NEW YORK

SECTION 13

MATHS HONOURS EXERCISES

1. The first part of the document is a
 2.
 3.
 4.
 5.
 6.
 7.
 8.
 9.
 10.
 11.
 12.
 13.
 14.
 15.
 16.
 17.
 18.
 19.
 20.
 21.
 22.
 23.
 24.
 25.
 26.
 27.
 28.
 29.
 30.
 31.
 32.
 33.
 34.
 35.
 36.
 37.
 38.
 39.
 40.
 41.
 42.
 43.
 44.
 45.
 46.
 47.
 48.
 49.
 50.
 51.
 52.
 53.
 54.
 55.
 56.
 57.
 58.
 59.
 60.
 61.
 62.
 63.
 64.
 65.
 66.
 67.
 68.
 69.
 70.
 71.
 72.
 73.
 74.
 75.
 76.
 77.
 78.
 79.
 80.
 81.
 82.
 83.
 84.
 85.
 86.
 87.
 88.
 89.
 90.
 91.
 92.
 93.
 94.
 95.
 96.
 97.
 98.
 99.
 100.

101.
 102.
 103.
 104.
 105.
 106.
 107.
 108.
 109.
 110.
 111.
 112.
 113.
 114.
 115.
 116.
 117.
 118.
 119.
 120.
 121.
 122.
 123.
 124.
 125.
 126.
 127.
 128.
 129.
 130.
 131.
 132.
 133.
 134.
 135.
 136.
 137.
 138.
 139.
 140.
 141.
 142.
 143.
 144.
 145.
 146.
 147.
 148.
 149.
 150.
 151.
 152.
 153.
 154.
 155.
 156.
 157.
 158.
 159.
 160.
 161.
 162.
 163.
 164.
 165.
 166.
 167.
 168.
 169.
 170.
 171.
 172.
 173.
 174.
 175.
 176.
 177.
 178.
 179.
 180.
 181.
 182.
 183.
 184.
 185.
 186.
 187.
 188.
 189.
 190.
 191.
 192.
 193.
 194.
 195.
 196.
 197.
 198.
 199.
 200.

201.
 202.
 203.
 204.
 205.
 206.
 207.
 208.
 209.
 210.
 211.
 212.
 213.
 214.
 215.
 216.
 217.
 218.
 219.
 220.
 221.
 222.
 223.
 224.
 225.
 226.
 227.
 228.
 229.
 230.
 231.
 232.
 233.
 234.
 235.
 236.
 237.
 238.
 239.
 240.
 241.
 242.
 243.
 244.
 245.
 246.
 247.
 248.
 249.
 250.
 251.
 252.
 253.
 254.
 255.
 256.
 257.
 258.
 259.
 260.
 261.
 262.
 263.
 264.
 265.
 266.
 267.
 268.
 269.
 270.
 271.
 272.
 273.
 274.
 275.
 276.
 277.
 278.
 279.
 280.
 281.
 282.
 283.
 284.
 285.
 286.
 287.
 288.
 289.
 290.
 291.
 292.
 293.
 294.
 295.
 296.
 297.
 298.
 299.
 300.

301.
 302.
 303.
 304.
 305.
 306.
 307.
 308.
 309.
 310.
 311.
 312.
 313.
 314.
 315.
 316.
 317.
 318.
 319.
 320.
 321.
 322.
 323.
 324.
 325.
 326.
 327.
 328.
 329.
 330.
 331.
 332.
 333.
 334.
 335.
 336.
 337.
 338.
 339.
 340.
 341.
 342.
 343.
 344.
 345.
 346.
 347.
 348.
 349.
 350.
 351.
 352.
 353.
 354.
 355.
 356.
 357.
 358.
 359.
 360.
 361.
 362.
 363.
 364.
 365.
 366.
 367.
 368.
 369.
 370.
 371.
 372.
 373.
 374.
 375.
 376.
 377.
 378.
 379.
 380.
 381.
 382.
 383.
 384.
 385.
 386.
 387.
 388.
 389.
 390.
 391.
 392.
 393.
 394.
 395.
 396.
 397.
 398.
 399.
 400.

401.
 402.
 403.
 404.
 405.
 406.
 407.
 408.
 409.
 410.
 411.
 412.
 413.
 414.
 415.
 416.
 417.
 418.
 419.
 420.
 421.
 422.
 423.
 424.
 425.
 426.
 427.
 428.
 429.
 430.
 431.
 432.
 433.
 434.
 435.
 436.
 437.
 438.
 439.
 440.
 441.
 442.
 443.
 444.
 445.
 446.
 447.
 448.
 449.
 450.
 451.
 452.
 453.
 454.
 455.
 456.
 457.
 458.
 459.
 460.
 461.
 462.
 463.
 464.
 465.
 466.
 467.
 468.
 469.
 470.
 471.
 472.
 473.
 474.
 475.
 476.
 477.
 478.
 479.
 480.
 481.
 482.
 483.
 484.
 485.
 486.
 487.
 488.
 489.
 490.
 491.
 492.
 493.
 494.
 495.
 496.
 497.
 498.
 499.
 500.