

IN CONNECTION WITH THE ACTS OF TERRORISM, INCLUDING SUCH ACTS AS WERE LISTED

HEREIN

UNITED STATES DEPARTMENT OF JUSTICE			
NAME	ADDRESS		
	STREET	CITY	STATE
James Earl Ray	1001		MO
John Edgar Hoover	1001		MO
John Edgar Hoover	1001	MO	MO
John Edgar Hoover	1001	MO	MO

THIS CASE IS BEING HANDLED BY THE
 FEDERAL BUREAU OF INVESTIGATION

Page	Section	Page
1	1. Introduction	1
2	2. Objectives	2
3	3. Methodology	3
4	4. Results	4
5	5. Discussion	5
6	6. Conclusion	6
7	7. References	7
8	8. Appendix	8
9	9. Bibliography	9
10	10. Glossary	10
11	11. Index	11
12	12. Summary	12
13	13. Acknowledgements	13
14	14. Notes	14
15	15. Figures	15
16	16. Tables	16
17	17. Charts	17
18	18. Diagrams	18
19	19. Photographs	19
20	20. Maps	20
21	21. Diagrams	21
22	22. Photographs	22
23	23. Maps	23
24	24. Diagrams	24
25	25. Photographs	25
26	26. Maps	26
27	27. Diagrams	27
28	28. Photographs	28
29	29. Maps	29
30	30. Diagrams	30
31	31. Photographs	31
32	32. Maps	32
33	33. Diagrams	33
34	34. Photographs	34
35	35. Maps	35
36	36. Diagrams	36
37	37. Photographs	37
38	38. Maps	38
39	39. Diagrams	39
40	40. Photographs	40
41	41. Maps	41
42	42. Diagrams	42
43	43. Photographs	43
44	44. Maps	44
45	45. Diagrams	45
46	46. Photographs	46
47	47. Maps	47
48	48. Diagrams	48
49	49. Photographs	49
50	50. Maps	50
51	51. Diagrams	51
52	52. Photographs	52
53	53. Maps	53
54	54. Diagrams	54
55	55. Photographs	55
56	56. Maps	56
57	57. Diagrams	57
58	58. Photographs	58
59	59. Maps	59
60	60. Diagrams	60
61	61. Photographs	61
62	62. Maps	62
63	63. Diagrams	63
64	64. Photographs	64
65	65. Maps	65
66	66. Diagrams	66
67	67. Photographs	67
68	68. Maps	68
69	69. Diagrams	69
70	70. Photographs	70
71	71. Maps	71
72	72. Diagrams	72
73	73. Photographs	73
74	74. Maps	74
75	75. Diagrams	75
76	76. Photographs	76
77	77. Maps	77
78	78. Diagrams	78
79	79. Photographs	79
80	80. Maps	80
81	81. Diagrams	81
82	82. Photographs	82
83	83. Maps	83
84	84. Diagrams	84
85	85. Photographs	85
86	86. Maps	86
87	87. Diagrams	87
88	88. Photographs	88
89	89. Maps	89
90	90. Diagrams	90
91	91. Photographs	91
92	92. Maps	92
93	93. Diagrams	93
94	94. Photographs	94
95	95. Maps	95
96	96. Diagrams	96
97	97. Photographs	97
98	98. Maps	98
99	99. Diagrams	99
100	100. Photographs	100

*Data supplied by the author.

Page	Chapter	Page
10	Chapter 1: Introduction to the Study of Psychology	10
11	Chapter 2: Research Methods in Psychology	11
12	Chapter 3: Biological Psychology	12
13	Chapter 4: Sensation and Perception	13
14	Chapter 5: Learning	14
15	Chapter 6: Memory	15
16	Chapter 7: Intelligence	16
17	Chapter 8: Developmental Psychology	17
18	Chapter 9: Personality	18
19	Chapter 10: Social Psychology	19
20	Chapter 11: Health Psychology	20
21	Chapter 12: Abnormal Psychology	21
22	Chapter 13: Therapies	22
23	Chapter 14: Psychology in the Workplace	23
24	Chapter 15: Psychology and the Law	24
25	Chapter 16: Psychology and the Environment	25
26	Chapter 17: Psychology and the Future	26
27	Appendix A: Statistics	27
28	Appendix B: Research Methods	28
29	Appendix C: Psychology in the Workplace	29
30	Appendix D: Psychology and the Law	30
31	Appendix E: Psychology and the Environment	31

Table compiled by the author



FIGURE 1. LANDFILL DISTRIBUTION



Figure 1. Microfilm storage cassette



FIGURE 1. DESK AND CHAIR ASSEMBLY

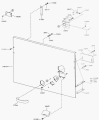


Diagram 13-00000-0000

Copyright © 1995 by General Electric



FIGURE 5. Glass fiber/epoxy resin laminate structure.



FIGURE 1. POLYMER NETWORK STRUCTURE.



FIGURE 1. THE FEDERAL JUDICIAL SYSTEM

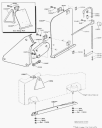


FIGURE 1. OTHER VARIATIONS OF THE BASIC BOAT DESIGN

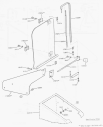


FIGURE 1. EXPLODED VIEW OF THE MECHANICAL ASSEMBLY

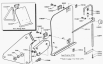


FIGURE 10. BOOK BOUNDING BY THE NEW YORK PUBLIC LIBRARY



FIGURE 11. DISASSEMBLING AND REASSEMBLING



Figure 1. Flow of information and data in an environmental monitoring system.



FIGURE 1. EXPLODED VIEW OF MECHANICAL ASSEMBLY WITH VARIOUS PARTS



FIGURE 2. EXPLODED VIEW OF MECHANICAL ASSEMBLY WITH VARIOUS PARTS

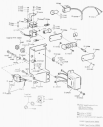


Figure 10. Localization of *CaMKII* and *CaMKK* in the hippocampus. The schematic diagram shows the localization of *CaMKII* and *CaMKK* in the hippocampus. The DG, CA1, CA2, CA3, and CA4 regions are indicated. The solid black lines represent *CaMKII*α, the dashed lines represent *CaMKII*β, the solid gray lines represent *CaMKK*α, and the dashed gray lines represent *CaMKK*β.



FIGURE 1. SAMPLING STATION SITES IN IBERIA

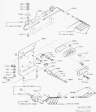


FIGURE 1. GEOMETRICAL MODEL OF THE TURBINE ENGINE

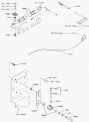


FIG. 13. SCHEMATIC OF THE COUPLED OCEAN-ATMOSPHERE-ICE SYSTEM.

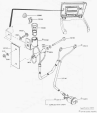


FIGURE 10. SUSPENSION ASSEMBLY WITH STEERING SHOCK



FIGURE 10. — *CONFESSIONE DI UN VALVOLA PER IL CONTROLLO DEL FLUSSO D'ACQUA*



FIGURE 11. — *UNA VERSIONE DI UNO DEI MOTORI PER IL CONTROLLO DEL FLUSSO*



FIGURE 10. A diagram of a cell showing various organelles.



FIGURE 11. A diagram of a cell showing various organelles.



FIGURE 21. TRANSDUCER-MOUNTING TO THE MOTOR UNIT TO GAGE



FIGURE 22. TRANSDUCER UNIT TO GAGE
 MECHANICAL TOWER QUALITY

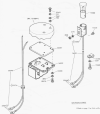


FIGURE 10. 3D MODEL OF THE MECHANICAL ASSEMBLY

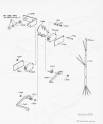


FIGURE 27. PITH ANATOMY AND THE OTHERS OF THE TREE AND THE ROOT SYSTEM.



FIGURE 10. TECHNICAL DRAWING OF A RECTANGULAR BOX WITH A LID. DIMENSIONS ARE IN MILLIMETERS.



FIGURE 11. TECHNICAL DRAWING OF A RECTANGULAR BOX WITH A LID. DIMENSIONS ARE IN MILLIMETERS.



FIGURE 10. SCHEMATIC DIAGRAMS OF THE LAMP WITH RELATIVE DIMENSIONS



FIGURE 11. SCHEMATIC DIAGRAM

FIGURE 12. SCHEMATIC REPRESENTATION OF THE LAMP WITH THE RELATIVE DIMENSIONS OF THE LAMP



Figure 11. Schematic representation of the motor nerve axons.



Figure 12. Schematic representation of the motor nerve axons.

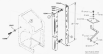


FIGURE 2. CONTINUOUS FLOW SYSTEM

FIGURE 2. CONTINUOUS FLOW SYSTEM TO PROVIDE AERATION OF WASTEWATER



FIGURE 3

FIGURE 3. CONTINUOUS FLOW SYSTEM TO PROVIDE AERATION OF WASTEWATER



FIGURE 2
EXPLODED VIEW

FIGURE 3. PHOTO COPY/REPRODUCTION OF DOCUMENTATION
DATE AND AUTHORSHIP DATA

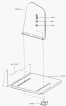


Figure 10.1
Exploded view of the assembly

Figure 10.1 shows the exploded view of the assembly. The components are numbered 1 through 10. The assembly consists of a dome-shaped top component (1) with a central shaft (2) passing through it. Below the dome is a horizontal cylindrical component (3) with a central hole. This cylinder is connected to a larger, rectangular base component (4) via a vertical shaft (5). The base component (4) has a central hole and is supported by a vertical post (6) that extends downwards to a circular base (7). The base (7) is mounted on a rectangular platform (8) with a central hole. The platform (8) is supported by a vertical post (9) that extends downwards to a circular base (10).



FIGURE 21. ISOMETRIC REPRESENTATION OF A RECTANGULAR WATER STORAGE TANK WITH ONE SUPPORT POST



FIGURE 22. ISOMETRIC REPRESENTATION OF A RECTANGULAR WATER STORAGE TANK WITH FOUR SUPPORT POSTS



FIGURE 23. ISOMETRIC REPRESENTATION OF A RECTANGULAR WATER STORAGE TANK WITH A SLOPE



FIGURE 1. THE GEOMETRIC MODEL OF THE STRUCTURE



FIGURE 2. THE GEOMETRIC MODEL OF THE STRUCTURE



FIGURE 10

FIGURE 11. (continued) STANDARD 20-0000 (continued)



PORTABLE WATER SAMPLER

FIGURE 1. WATER SAMPLER

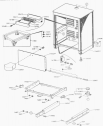


FIGURE 10-10

REPAIRING A BENCH WITH CASTERS



图 1 试验装置构造图

INTERNATIONAL INDEX

Year	Author(s)	Year	Author(s)	Year	Author(s)
1980	...	1980	...	1980	...
1981	...	1981	...	1981	...
1982	...	1982	...	1982	...
1983	...	1983	...	1983	...
1984	...	1984	...	1984	...
1985	...	1985	...	1985	...
1986	...	1986	...	1986	...
1987	...	1987	...	1987	...
1988	...	1988	...	1988	...
1989	...	1989	...	1989	...
1990	...	1990	...	1990	...
1991	...	1991	...	1991	...
1992	...	1992	...	1992	...
1993	...	1993	...	1993	...
1994	...	1994	...	1994	...
1995	...	1995	...	1995	...
1996	...	1996	...	1996	...
1997	...	1997	...	1997	...
1998	...	1998	...	1998	...
1999	...	1999	...	1999	...
2000	...	2000	...	2000	...
2001	...	2001	...	2001	...
2002	...	2002	...	2002	...
2003	...	2003	...	2003	...
2004	...	2004	...	2004	...
2005	...	2005	...	2005	...
2006	...	2006	...	2006	...
2007	...	2007	...	2007	...
2008	...	2008	...	2008	...
2009	...	2009	...	2009	...
2010	...	2010	...	2010	...
2011	...	2011	...	2011	...
2012	...	2012	...	2012	...
2013	...	2013	...	2013	...
2014	...	2014	...	2014	...
2015	...	2015	...	2015	...
2016	...	2016	...	2016	...
2017	...	2017	...	2017	...
2018	...	2018	...	2018	...
2019	...	2019	...	2019	...
2020	...	2020	...	2020	...

2008年12月28日 星期日

日期	姓名	金额	日期	姓名	金额
2008.12.28	王明	100	2008.12.28	李红	200
2008.12.28	张强	50	2008.12.28	赵伟	150
2008.12.28	陈丽	30	2008.12.28	孙涛	100
2008.12.28	周敏	40	2008.12.28	吴昊	80
2008.12.28	郑伟	20	2008.12.28	钱斌	60
2008.12.28	冯刚	15	2008.12.28	李军	40
2008.12.28	朱丽	25	2008.12.28	王强	50
2008.12.28	刘伟	35	2008.12.28	张明	70
2008.12.28	陈刚	45	2008.12.28	李娜	90
2008.12.28	周敏	55	2008.12.28	孙涛	110
2008.12.28	郑伟	65	2008.12.28	吴昊	130
2008.12.28	冯刚	75	2008.12.28	钱斌	150
2008.12.28	朱丽	85	2008.12.28	李军	170
2008.12.28	刘伟	95	2008.12.28	王强	190
2008.12.28	陈刚	105	2008.12.28	张明	210
2008.12.28	周敏	115	2008.12.28	李娜	230
2008.12.28	郑伟	125	2008.12.28	孙涛	250
2008.12.28	冯刚	135	2008.12.28	吴昊	270
2008.12.28	朱丽	145	2008.12.28	钱斌	290
2008.12.28	刘伟	155	2008.12.28	李军	310
2008.12.28	陈刚	165	2008.12.28	王强	330
2008.12.28	周敏	175	2008.12.28	张明	350
2008.12.28	郑伟	185	2008.12.28	李娜	370
2008.12.28	冯刚	195	2008.12.28	孙涛	390
2008.12.28	朱丽	205	2008.12.28	吴昊	410
2008.12.28	刘伟	215	2008.12.28	钱斌	430
2008.12.28	陈刚	225	2008.12.28	李军	450
2008.12.28	周敏	235	2008.12.28	王强	470
2008.12.28	郑伟	245	2008.12.28	张明	490
2008.12.28	冯刚	255	2008.12.28	李娜	510
2008.12.28	朱丽	265	2008.12.28	孙涛	530
2008.12.28	刘伟	275	2008.12.28	吴昊	550
2008.12.28	陈刚	285	2008.12.28	钱斌	570
2008.12.28	周敏	295	2008.12.28	李军	590
2008.12.28	郑伟	305	2008.12.28	王强	610
2008.12.28	冯刚	315	2008.12.28	张明	630
2008.12.28	朱丽	325	2008.12.28	李娜	650
2008.12.28	刘伟	335	2008.12.28	孙涛	670
2008.12.28	陈刚	345	2008.12.28	吴昊	690
2008.12.28	周敏	355	2008.12.28	钱斌	710
2008.12.28	郑伟	365	2008.12.28	李军	730
2008.12.28	冯刚	375	2008.12.28	王强	750
2008.12.28	朱丽	385	2008.12.28	张明	770
2008.12.28	刘伟	395	2008.12.28	李娜	790
2008.12.28	陈刚	405	2008.12.28	孙涛	810
2008.12.28	周敏	415	2008.12.28	吴昊	830
2008.12.28	郑伟	425	2008.12.28	钱斌	850
2008.12.28	冯刚	435	2008.12.28	李军	870
2008.12.28	朱丽	445	2008.12.28	王强	890
2008.12.28	刘伟	455	2008.12.28	张明	910
2008.12.28	陈刚	465	2008.12.28	李娜	930
2008.12.28	周敏	475	2008.12.28	孙涛	950
2008.12.28	郑伟	485	2008.12.28	吴昊	970
2008.12.28	冯刚	495	2008.12.28	钱斌	990
2008.12.28	朱丽	505	2008.12.28	李军	1010
2008.12.28	刘伟	515	2008.12.28	王强	1030
2008.12.28	陈刚	525	2008.12.28	张明	1050
2008.12.28	周敏	535	2008.12.28	李娜	1070
2008.12.28	郑伟	545	2008.12.28	孙涛	1090
2008.12.28	冯刚	555	2008.12.28	吴昊	1110
2008.12.28	朱丽	565	2008.12.28	钱斌	1130
2008.12.28	刘伟	575	2008.12.28	李军	1150
2008.12.28	陈刚	585	2008.12.28	王强	1170
2008.12.28	周敏	595	2008.12.28	张明	1190
2008.12.28	郑伟	605	2008.12.28	李娜	1210
2008.12.28	冯刚	615	2008.12.28	孙涛	1230
2008.12.28	朱丽	625	2008.12.28	吴昊	1250
2008.12.28	刘伟	635	2008.12.28	钱斌	1270
2008.12.28	陈刚	645	2008.12.28	李军	1290
2008.12.28	周敏	655	2008.12.28	王强	1310
2008.12.28	郑伟	665	2008.12.28	张明	1330
2008.12.28	冯刚	675	2008.12.28	李娜	1350
2008.12.28	朱丽	685	2008.12.28	孙涛	1370
2008.12.28	刘伟	695	2008.12.28	吴昊	1390
2008.12.28	陈刚	705	2008.12.28	钱斌	1410
2008.12.28	周敏	715	2008.12.28	李军	1430
2008.12.28	郑伟	725	2008.12.28	王强	1450
2008.12.28	冯刚	735	2008.12.28	张明	1470
2008.12.28	朱丽	745	2008.12.28	李娜	1490
2008.12.28	刘伟	755	2008.12.28	孙涛	1510
2008.12.28	陈刚	765	2008.12.28	吴昊	1530
2008.12.28	周敏	775	2008.12.28	钱斌	1550
2008.12.28	郑伟	785	2008.12.28	李军	1570
2008.12.28	冯刚	795	2008.12.28	王强	1590
2008.12.28	朱丽	805	2008.12.28	张明	1610
2008.12.28	刘伟	815	2008.12.28	李娜	1630
2008.12.28	陈刚	825	2008.12.28	孙涛	1650
2008.12.28	周敏	835	2008.12.28	吴昊	1670
2008.12.28	郑伟	845	2008.12.28	钱斌	1690
2008.12.28	冯刚	855	2008.12.28	李军	1710
2008.12.28	朱丽	865	2008.12.28	王强	1730
2008.12.28	刘伟	875	2008.12.28	张明	1750
2008.12.28	陈刚	885	2008.12.28	李娜	1770
2008.12.28	周敏	895	2008.12.28	孙涛	1790
2008.12.28	郑伟	905	2008.12.28	吴昊	1810
2008.12.28	冯刚	915	2008.12.28	钱斌	1830
2008.12.28	朱丽	925	2008.12.28	李军	1850
2008.12.28	刘伟	935	2008.12.28	王强	1870
2008.12.28	陈刚	945	2008.12.28	张明	1890
2008.12.28	周敏	955	2008.12.28	李娜	1910
2008.12.28	郑伟	965	2008.12.28	孙涛	1930
2008.12.28	冯刚	975	2008.12.28	吴昊	1950
2008.12.28	朱丽	985	2008.12.28	钱斌	1970
2008.12.28	刘伟	995	2008.12.28	李军	1990

MEMBERS, 1997-1998

Year	Member Name	Year	Member Name	Year	Member Name
1997	...	1997	...	1997	...
1998	...	1998	...	1998	...
1999	...	1999	...	1999	...
2000	...	2000	...	2000	...
2001	...	2001	...	2001	...
2002	...	2002	...	2002	...
2003	...	2003	...	2003	...
2004	...	2004	...	2004	...
2005	...	2005	...	2005	...
2006	...	2006	...	2006	...
2007	...	2007	...	2007	...
2008	...	2008	...	2008	...
2009	...	2009	...	2009	...
2010	...	2010	...	2010	...
2011	...	2011	...	2011	...
2012	...	2012	...	2012	...
2013	...	2013	...	2013	...
2014	...	2014	...	2014	...
2015	...	2015	...	2015	...
2016	...	2016	...	2016	...
2017	...	2017	...	2017	...
2018	...	2018	...	2018	...
2019	...	2019	...	2019	...
2020	...	2020	...	2020	...
2021	...	2021	...	2021	...
2022	...	2022	...	2022	...
2023	...	2023	...	2023	...
2024	...	2024	...	2024	...
2025	...	2025	...	2025	...

*Indicates deceased

No.	Author	Title	No.	Author	No.	Author
1	1	...	1	...
2	2	...	2	...
3	3	...	3	...
4	4	...	4	...
5	5	...	5	...
6	6	...	6	...
7	7	...	7	...
8	8	...	8	...
9	9	...	9	...
10	10	...	10	...
11	11	...	11	...
12	12	...	12	...
13	13	...	13	...
14	14	...	14	...
15	15	...	15	...
16	16	...	16	...
17	17	...	17	...
18	18	...	18	...
19	19	...	19	...
20	20	...	20	...
21	21	...	21	...
22	22	...	22	...
23	23	...	23	...
24	24	...	24	...
25	25	...	25	...
26	26	...	26	...
27	27	...	27	...
28	28	...	28	...
29	29	...	29	...
30	30	...	30	...
31	31	...	31	...
32	32	...	32	...
33	33	...	33	...
34	34	...	34	...
35	35	...	35	...
36	36	...	36	...
37	37	...	37	...
38	38	...	38	...
39	39	...	39	...
40	40	...	40	...
41	41	...	41	...
42	42	...	42	...
43	43	...	43	...
44	44	...	44	...
45	45	...	45	...
46	46	...	46	...
47	47	...	47	...
48	48	...	48	...
49	49	...	49	...
50	50	...	50	...

