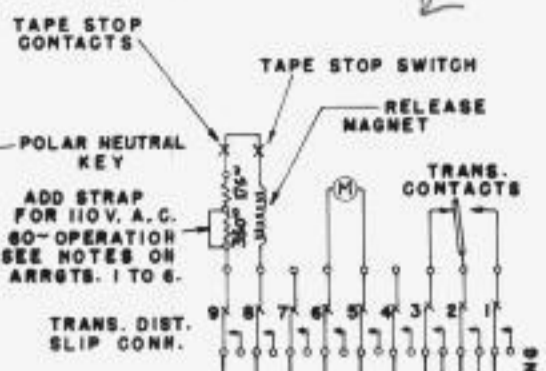
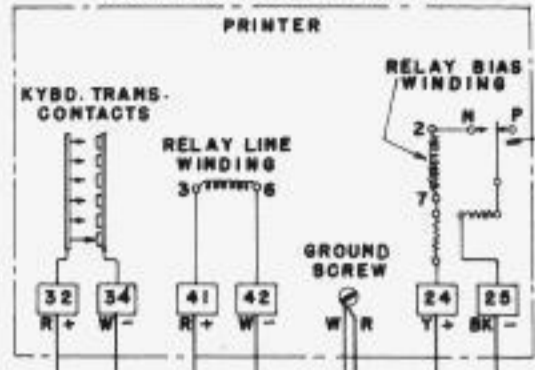


TABLE CONNECTIONS FOR VARIOUS POWER SUPPLIES					
A R R E S T	POWER SUPPLY FOR MOTOR	D.C. FOR RELAY CIRCUITS, TEST CIRCUITS AND PERFORATOR MAG.	POWER CONNECTIONS		
1	110 V. A.C. 50 OR 60 CYCLES	RECTIFIER ON TABLE	CONNECT GRD. SIDE OF A.C. TO TERM. 22, BLOCK A. } INSIDE DUCT † CONNECT UNGRD. SIDE OF A.C. TO TERM. 21, BLOCK A. } STRAP 350" RESIS. ON TRANS. DIST. WITH UNIVERSAL SINGLE COIL START MAG.		
2	110 V. A.C. 50 OR 60 CYCLES	110 V. D.C. POWER SUPPLY	CONNECT GRD. SIDE OF A.C. TO TERM. 22, BLOCK A. } INSIDE DUCT † CONNECT UNGRD. SIDE OF A.C. TO TERM. 21, BLOCK A. } STRAP 350" RESIS. ON TRANS. DIST. WITH UNIVERSAL SINGLE COIL START MAG. REMOVE END OF STRAP "V" FROM TERM. 37, BLOCK "B", AND CONNECT TO TERM. 21, BLOCK "B". REMOVE END OF STRAP "W" FROM TERM. 35, BLOCK "B" AND CONNECT TO TERM. 22, BLOCK "B". CONNECT -D.C. TO TERM. 21, BLOCK "B" } OUTSIDE DUCT † CONNECT + D.C. TO TERM. 22, BLOCK "B" }		
3	110 V. D.C. POWER SUPPLY EXTERNAL TO TABLE (+ GROUND)		CONNECT + D.C. (GRD) TO TERM. 22, BLOCK "A." } OUTSIDE DUCT † CONNECT - D.C. (UNGRD) TO TERM. 21, BLOCK "A." } OMIT 95050 GORD FROM PRINTER AND REPERF. REMOVE END OF STRAP "V" FROM TERM. 37, BLOCK "B" AND CONNECT TO TERM. 23, BLOCK "A" REMOVE END OF STRAP "W" FROM TERM. 35, BLOCK "B" AND CONNECT TO TERM. 24, BLOCK "A" STRAP PRINTER AND REPERF. TERMS. 21 & 25. STRAP PRINTER AND REPERF. TERMS. 23 & 24. REMOVE STRAP FROM 350" RESIS. ON TRANS. DIST. EQUIPPED WITH UNIVERSAL SINGLE COIL START MAG.		
4	110 V. D.C. POWER SUPPLY EXTERNAL TO TABLE (- GROUND)		CONNECT - D.C. (GRD) TO TERM. 22, BLOCK "A." } OUTSIDE DUCT † CONNECT + D.C. (UNGRD) TO TERM. 21, BLOCK "A." } OMIT 95050 GORD FROM PRINTER AND REPERF. REMOVE END OF STRAP "V" FROM TERM. 37, BLOCK "B" AND CONNECT TO TERM. 24, BLOCK "A" REMOVE END OF STRAP "W" FROM TERM. 35, BLOCK "B" AND CONNECT TO TERM. 23, BLOCK "A" STRAP PRINTER AND REPERF. TERMS. 23 & 25. STRAP PRINTER AND REPERF. TERMS. 21 & 24. REMOVE STRAP FROM 350" RESIS. ON TRANS. DIST. EQUIPPED WITH UNIVERSAL SINGLE COIL START MAG.		
5	110 VOLT A.C. 25 CYCLE	RECTIFIER ON TABLE	SAME AS (1) EXCEPT OMIT STRAP FROM 350" RESISTOR, STRAP 175" RESISTOR AND INSTALL 103514 RESIS. UNIT AS FOLLOWS: <u>RESISTOR UNIT INSTALLATION</u> REMOVE STRAP BETWEEN TERMS. 25 AND 44 OF POWER TERM. BLOCK "A." CONNECT RED WIRES FROM 103514 RESISTOR UNIT TO TERMS. 25 AND 44. REMOVE STRAP BETWEEN TERMS. 40 AND 30. CONNECT YELLOW WIRES TO TERMS. 40 AND 30. REMOVE STRAP BETWEEN TERMS. 36 AND 28. CONNECT BLUE WIRES TO TERMS. 36 AND 28.		
6	110 VOLT A.C. 25 CYCLE	110 VOLT D.C. POWER SUPPLY	SAME AS (2) EXCEPT OMIT STRAP FROM 350" RESISTOR AND STRAP 175" RESISTOR. INSTALL RESISTOR UNIT AS EXPLAINED UNDER RESISTOR UNIT INSTALLATION IN (5).		
† INDICATES DUCT THRU WHICH POWER WIRES ENTER TABLE.					
RECOMMENDED FUSETRON PROTECTION					
EQUIPMENT	LOCATION OF FUSETRON	MOTOR DRIVE			
		110 V. A.C. 50-60~ SYNCHRONOUS	10 V. A.C. 50-60~ GOVERNED	110 V. A.C. 25~ GOVERNED	110 V. D.C. GOVERNED
PRINTER	ON PTR. BASE	3.2 AMP.	1.60 AMP.	1.40 AMP.	.8 AMP.
TRANS. DIST.	G	3.2 AMP.	1.25 AMP.	1.25 AMP.	.6 AMP.
REPERFORATOR	H	3.2 AMP.	1.60 AMP.	1.25 AMP.	.6 AMP.

T.D

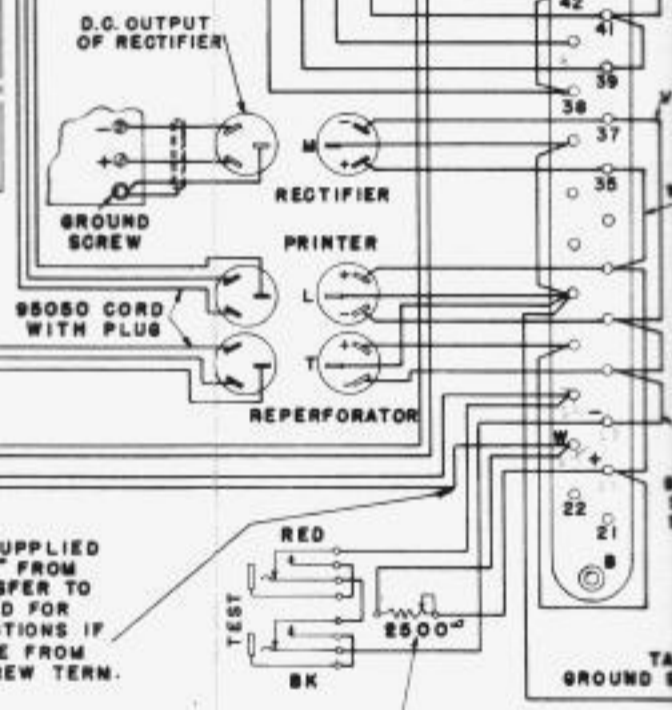
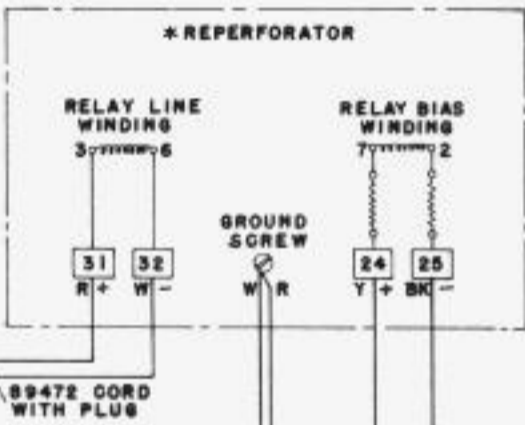
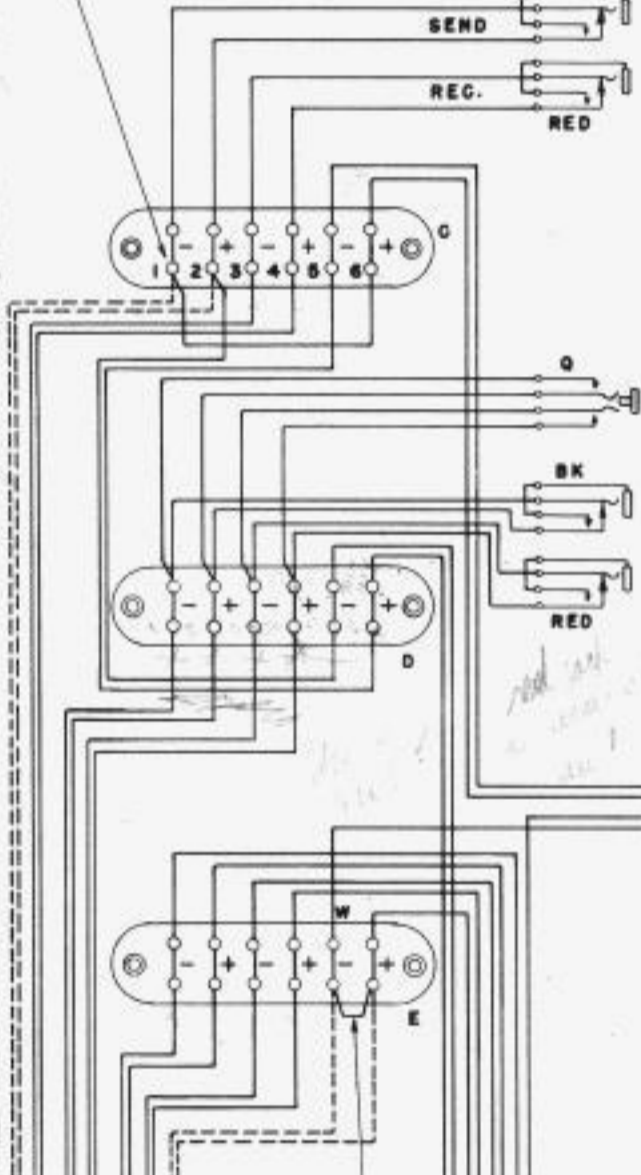
This wiring is not in following order

LINE AND D.C. POWER CORD CONNECTIONS TO APPARATUS



WHERE INDEPENDENT KEYBOARD TRANSMISSION IS DESIRED, REMOVE CONNECTIONS FROM LOWER SCREWS OF TERMINALS 1 & 2 OF BLOCK "C" SPLICE AND TAPE THEN RUN "SEND" LINE TO TERMINALS 1 & 2 AS SHOWN DOTTED.

LINE TERMINAL BLOCKS



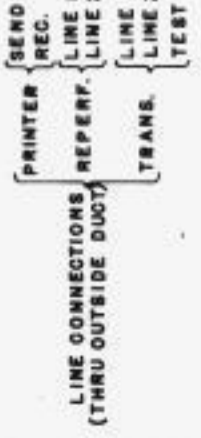
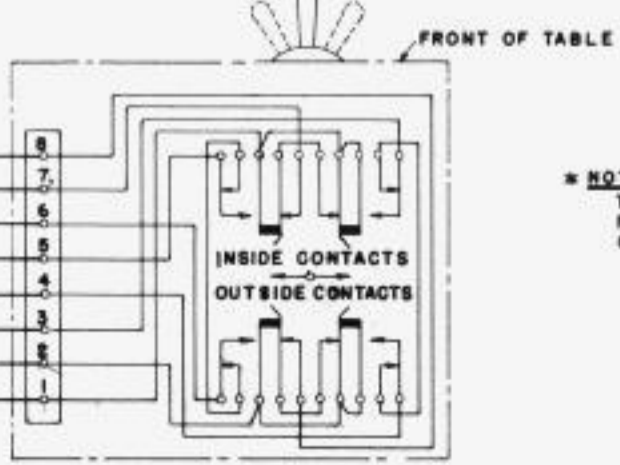
FOR LOCAL TEST, WITH LINE BATTERY SUPPLIED EXTERNAL TO TABLE: REMOVE STRAP "Y" FROM TERMS. 25 & 27 OF BLOCK "B" AND TRANSFER TO TERMS. 27 & 29 OF BLOCK "B" (REQUIRED FOR RESTORING TABLE TO ORIGINAL CONNECTIONS IF EVER NECESSARY). REMOVE WHITE WIRE FROM SCREW TERM. 24 AND CONNECT TO SCREW TERM. 25 OF BLOCK "B."

ADJUST SLIDER ON RESISTOR FOR 80 MILLIAMPERES IN THE TEST CIRCUIT.

THESE TERMS ARE STRAPPED WHEN ONLY ONE PRINTER IS USED AT A STATION.

TRANSMITTER LINE SWITCHING KEY

LINE 2 - RIGHT
TEST - CENTER
LINE 1 - LEFT



* NOTE: TO ALSO CONTROL THE REPERFORATOR FROM UPPER CASE "H" OR "M" CONTACTS OF PRINTER: ON BLOCK "A" UNSTRAP 27-29 AND 29-31 STRAP 27-31 AND 29-42. INSTALL 6.25 AMPERE FUSETRON IN PRINTER FUSE RECEPTACLE.

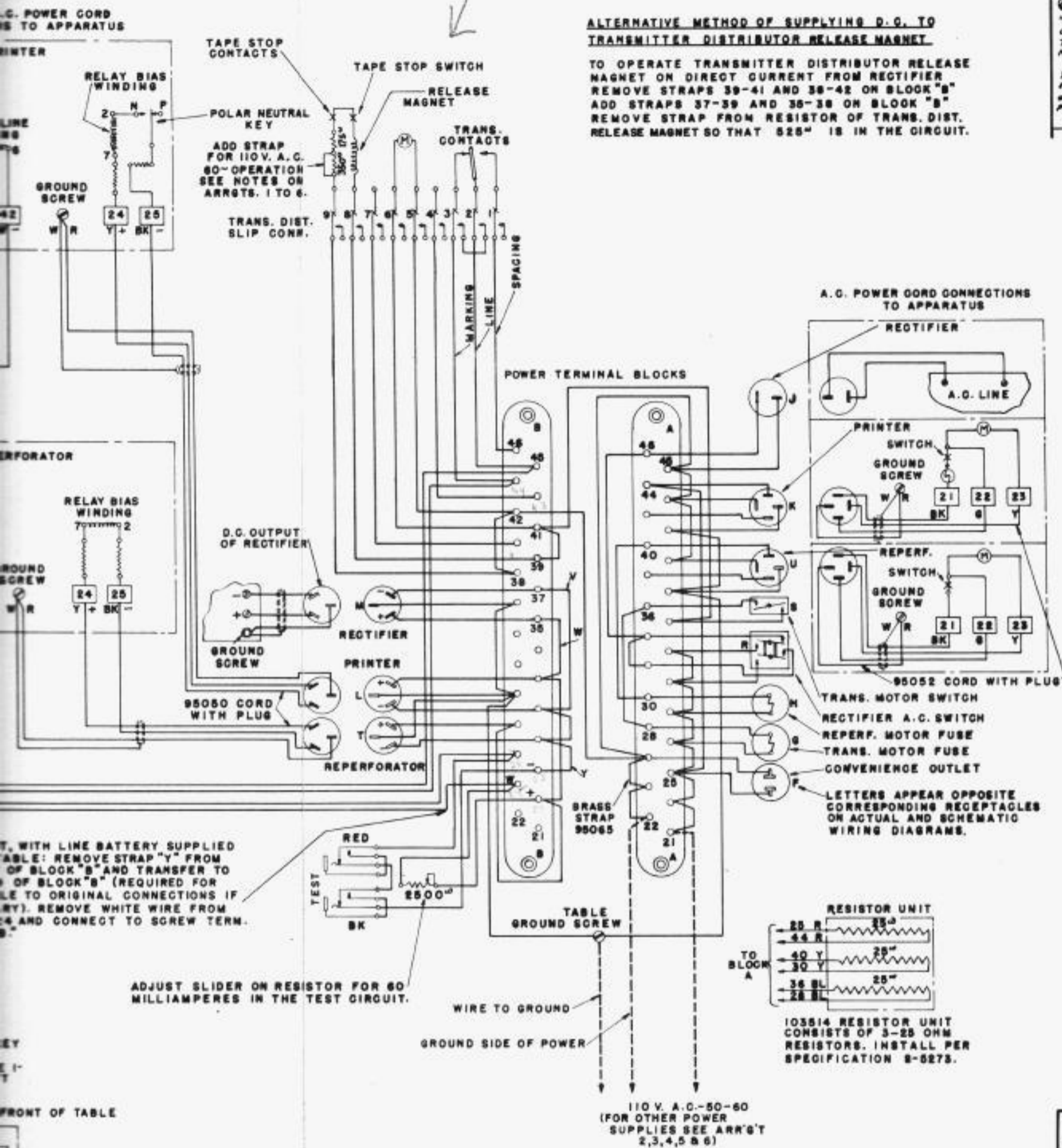
WIRE TO GROUND

GROUND SIDE OF POWER

REVISIONS
 (2) NOTE ADDED TITLED
 "ALTERNATING METHOD
 OF SUPPLYING D.C. TO
 TRANS. DISTRIB. RELEASE
 MAGNET"
 NOTE ADDED RELATING
 TO REPERF. CONTROL
 FROM UPPER CASE "H"
 OR "M" CONTACTS OF
 PRINTER.
 9-18-61 G.A.M.

**ALTERNATIVE METHOD OF SUPPLYING D.C. TO
 TRANSMITTER DISTRIBUTOR RELEASE MAGNET**

TO OPERATE TRANSMITTER DISTRIBUTOR RELEASE
 MAGNET ON DIRECT CURRENT FROM RECTIFIER
 REMOVE STRAPS 39-41 AND 38-42 ON BLOCK "B"
 ADD STRAPS 37-39 AND 38-38 ON BLOCK "B"
 REMOVE STRAP FROM RESISTOR OF TRANS. DIST.
 RELEASE MAGNET SO THAT 525" IS IN THE CIRCUIT.



*** NOTE:**
 TO ALSO CONTROL THE REPERFORATOR
 FROM UPPER CASE "H" OR "M" CONTACTS
 OF PRINTER:
 ON BLOCK "A" UNSTRAP 27-29 AND 29-31
 STRAP 27-31 AND 29-42. INSTALL 6.25
 AMPERE FUSE TRON IN PRINTER FUSE
 RECEPTACLE.

----- POWER LEADS
 _____ TABLE WIRING INCLUDING CORDS
 [Wavy line] DENOTES SHIELDED CABLE OR CORD
 RECEPTACLES AND PLUGS SHOWN FROM
 SLOT AND PRONG FACES
 FOR ACTUAL WIRING DIAGRAM SEE W.D. 1794

COLOR CODE	
BK	BLACK
W	WHITE
R	RED
G	GREEN
Y	YELLOW
B	BLUE

TELETYPE CORPORATION
 WD-1795-G
 SCHEMATIC WIRING DIAGRAM
 XRT-96 & XRT 107
 METAL TABLE
 FOR
 19 TYPE SET
 DRAWN [Signature]
 TRACED [Signature]
 CHECKED [Signature]
 ENG'RD [Signature]
 APPROVED [Signature]