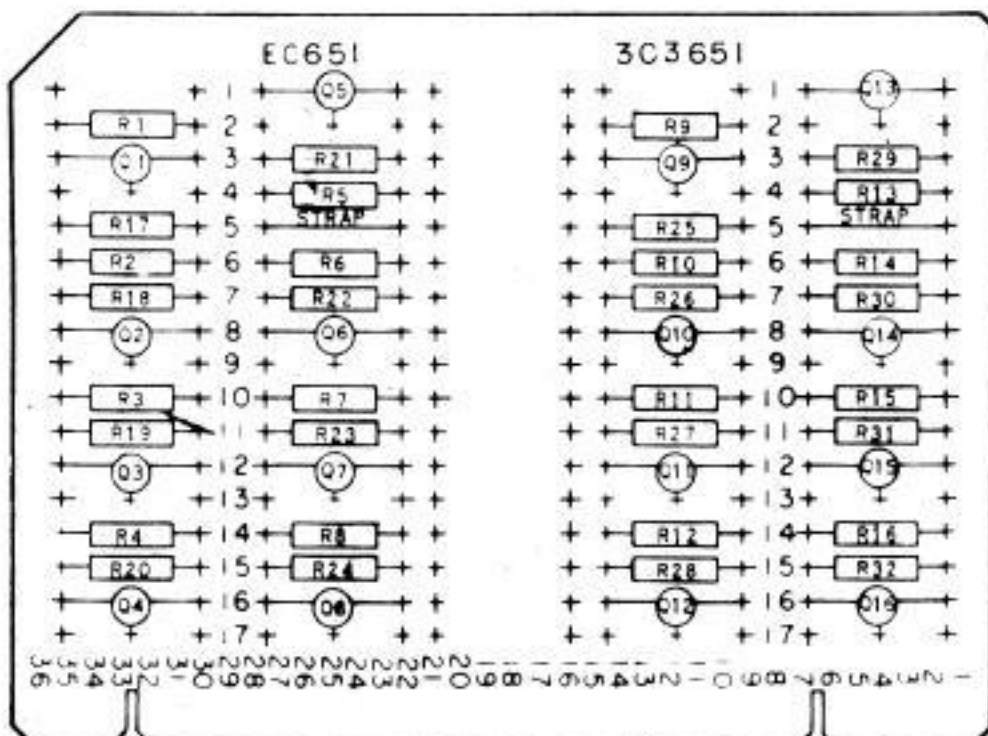


EC 651

303651

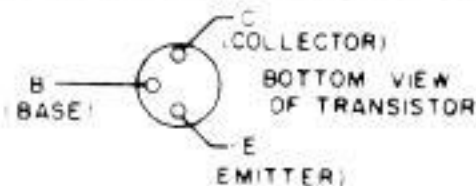
EMITTER FOLLOWER

CIRCUIT BOARD EC651

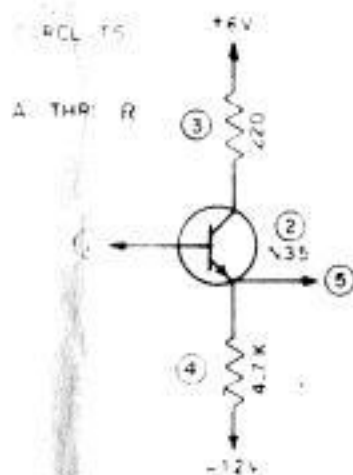


NOTE
REFER TO EC50WD FOR BASIC MARKING AND PRODUCTION INFORMATION

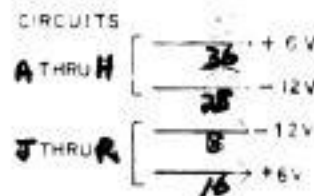
302704



THIS CARD CONTAINS SIXTEEN NPN MEDIUM POWER EMITTER FOLLOWERS USED TO PROVIDE CURRENT GAIN WITH NO INVERSION OR CHANGE IN THE INPUT SIGNAL LEVEL. WITH ZERO VOLTS APPLIED AT THE BASE, ZERO VOLTS APPEARS AT THE EMITTER. WITH +6V APPLIED AT THE BASE, +6V APPEARS AT THE EMITTER. THE NPN EMITTER FOLLOWER IS USED TO PROVIDE LOW OUTPUT IMPEDANCE (HIGH CURRENT GAIN) ON THE POSITIVE GOING VOLTAGE TRANSITION (-6 TO 0 VOLTS).



NOTE
CIRCLED NUMBERS DESIGNATE COMPONENTS OR INPUT AND OUTPUT TERMINALS ON MULTIPLE CIRCUITS.



	(1)	(2)	(3)	(4)	(5)
A	29	Q1	R1	R17	19
B	30	Q2	R2	R18	33
C	31	Q3	R3	R19	34
D	32	Q4	R4	R20	35
E	21	Q5	R5	R21	20
F	22	Q6	R6	R22	25
G	23	Q7	R7	R23	26
H	24	Q8	R8	R24	27

	(1)	(2)	(3)	(4)	(5)
J	9	Q9	R9	R25	17
K	10	Q10	R10	R26	13
L	11	Q11	R11	R27	14
M	12	Q12	R12	R28	15
N	1	Q13	R13	R29	18
P	2	Q14	R14	R30	5
Q	3	Q15	R15	R31	6
R	4	Q16	R16	R32	7

SYMBOL	REVISIONS		
	ISSUE	DATE	AUTH. NO.
A			
B			
C			
D			
E			
F			
G			
H			
J			
K			
L			
M			
N			
P			
Q			
R			

REF DESIGN	TELETYPE PART NO	TOTAL QTY	NAME AND DESCRIPTION	LOCATING FUNCTION	REF DESIGN	TELETYPE PART NO	TOTAL QTY	NAME AND DESCRIPTION	LOCATING FUNCTION
R1	118724	16	RESISTOR, FIXED 22 OHMS	COLLECTOR LOAD	Q1			SAME AS Q1	EMITTER FOLLOWER
R2			SAME AS R1	"	Q2			"	"
R3			"	"	Q3			"	"
R4			"	"	Q4			"	"
R5			"	"	Q5			"	"
R6			"	"	Q6			"	"
R7			"	"	Q7			"	"
R8			"	"	Q8			"	"
R9			"	"	Q9			"	"
R10			"	"					
R11			"	"	EC	302704	1	BOARD ETCHED CIRCUIT	
R12			"	"					
R13			"	"		144495	16	PAD TRANSISTOR	
R14			"	"			2	STRAP, 24 AWG BARE	
R15			"	"					
R16			"	"					
R17	118146	16	RESISTOR, FIXED 4.7K OHMS	EMITTER LOAD					
R18			SAME AS R17	"					
R19			"	"					
R20			"	"					
R21			"	"					
R22			"	"					
R23			"	"					
R24			"	"					
R25			"	"					
R26			"	"					
R27			"	"					
R28			"	"					
R29			"	"					
R30			"	"					
R31			"	"					
R32			"	"					
Q1	193134	16	TRANS STGE (NPN) N35	EMITTER FOLLOWER					
Q2			SAME AS Q1	"					
Q3			"	"					
Q4			"	"					
Q5			"	"					
Q6			"	"					
Q7			"	"					

R & D USE ONLY

APPROVALS	
D AND R	E OF M
E NUMBER	
PROD NO 303651	
DATE 11-19-63	
PD FILE NO G-A-353,219A	
DRAWN P.K.	CHKD AD
ENGR D.L.	APPD RSR
TELETYPE CORPORATION	

Donhandwer