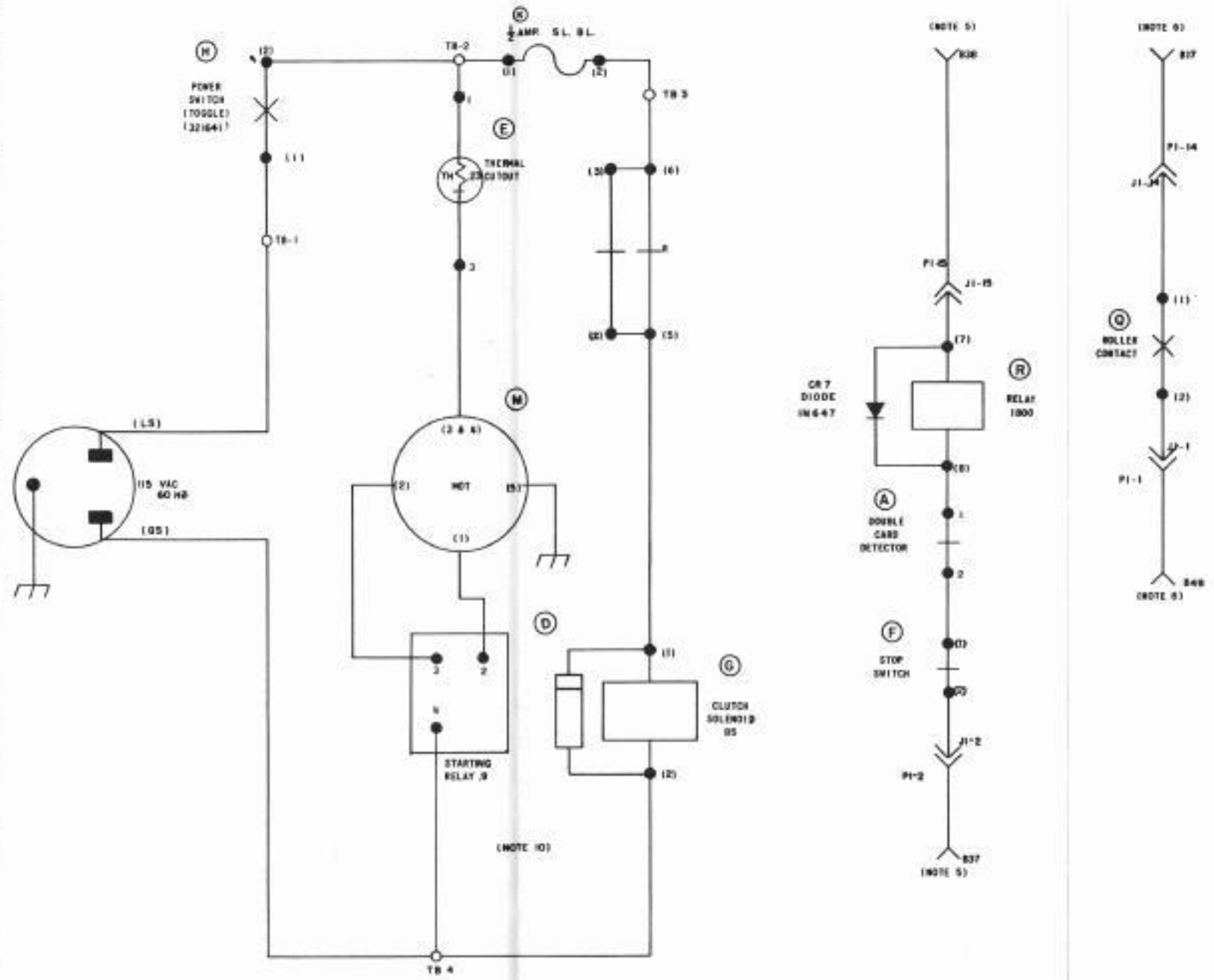


7342WD

REVISIONS

ISSUE	DATE	AUTH. NO.
1	11-12-66	18024-R
2	5-18-67	93203
3	5-18-67	93203-1

- NOTES
- NUMBERS ENCLOSED IN PARENTHESES ARE FOR REFERENCE ONLY AND ARE NOT ON COMPONENTS.
 - RESISTANCE VALUES IN OHMS.
 - ASSOCIATED ACTUAL WIRING DIAGRAM, 7341WD.
 - ALL CONTACTS SHOWN IN UNOPERATED POSITION.
 - PI-2 & B IS CONNECTED TO THE LEAD001 CARD READER AS FOLLOWS: (SEE 7338WD)
 - PI-1 IS TO 838 NEG. POLARITY
 - PI-2 TO 837 POS. POLARITY
 - SEE 7338WD & 7341WD FOR INFORMATION ON CONNECTION TO THE CARD READER.
 - FOR INTERCONNECTING CABLE BETWEEN CARD READER & CARD FEEDER SEE 301906.
 - ▷ INDICATES FEMALE AND ◁ INDICATES MALE TERMINALS.
 - REFERENCE SPEC. FOR TELETYPE CORP EMPLOYEES ONLY 91256 S.
 - ARC SUPPRESSION NETWORK CONSISTS OF 11MF IN SERIES WITH 470 OHMS.



SCHEMATIC WIRING DIAGRAM FOR AUTOMATIC CARD FEEDER EPCF-1

APPROVALS
 D AND B: [Signature] E OF M: [Signature]

E-NUMBER
 PROD. NO. 7342WD
 DATE
 R.D. FILE NO. 10.05.0548
 DRAWN BY: [Signature] G.M.D. [Signature]
 ENGR. D.I.D. APPD. [Signature]

TELETYPE CORPORATION

3 7342WD