

HIGH SPEED TAPE PUNCH UNIT

(DRPE TYPE)

LUBRICATION

CONTENTS	PAGE
1. GENERAL	1
2. LUBRICANTS	1
3. LUBRICATION INTERVAL	1
4. LUBRICATION SYMBOLS	1
5. LUBRICATION POINTS	2 ←
Antireverse pawl and pulley	6
Antireverse pawl spring	6
Drive spring sleeve	4
Escapement pawl	3
Escapement pawl shaft	3
Escapement ratchet	3
Feed motor pinion	5
Feed wheel shaft	3
Idler gear	4
Idler lever	4
Idler lever spring	6
Links	2
Pressure roller	3
Pressure roller ball	3
Pressure roller spring	5
Punch pins	2
Reed tips	2
Spur gear	4
Tape feed motor	5
Tape guide shaft	3
Tape guide spring	4
Tape puller motor	5
Tape sensing lever spring	6
Tape sensing lever switch	6
Yield spring	3

2-1/2 lbs. Apply grease to both loops of helical springs that exert a nominal tension of 2-1/2 lbs or more.

2. LUBRICANTS

2.01 Use KS7470 oil and TP143484 grease when lubricating this unit.

Note: Teletype part no. TP143484 is a one-pound can of grease. The same grease packaged in a four-ounce tube is TP145867.

2.02 Unless otherwise specified, one or two drops of oil or 1/64 inch coating of grease at each of the places indicated should be sufficient.

3. LUBRICATION INTERVAL

The lubrication interval shall be as follows:

Speed of Operation	* Hours Between Lubrication	* Time
100 wpm	2000	6 Months
500 wpm	400	3 Months
1000 wpm	200	2 Months
1500 wpm	150	1-1/2 Months
2000 wpm	75	1 Month ←
2400 wpm	60	1 Month ←

* Whichever occurs first.

4. LUBRICATION SYMBOLS

The symbols in the text indicate the following:

- O Apply one drop of KS7470 oil.
- O2 Apply two drops of KS7470 oil, etc.
- SAT Saturate with KS7470 oil (felt washers, oilite bearings, etc).
- FILL Fill with KS7470 oil (oil holes, oil cups, etc).
- M Apply 1/64 inch coating of TP143484 or TP145867 grease.

Refer to the lubrication illustrations that follow for specific lubrication points:

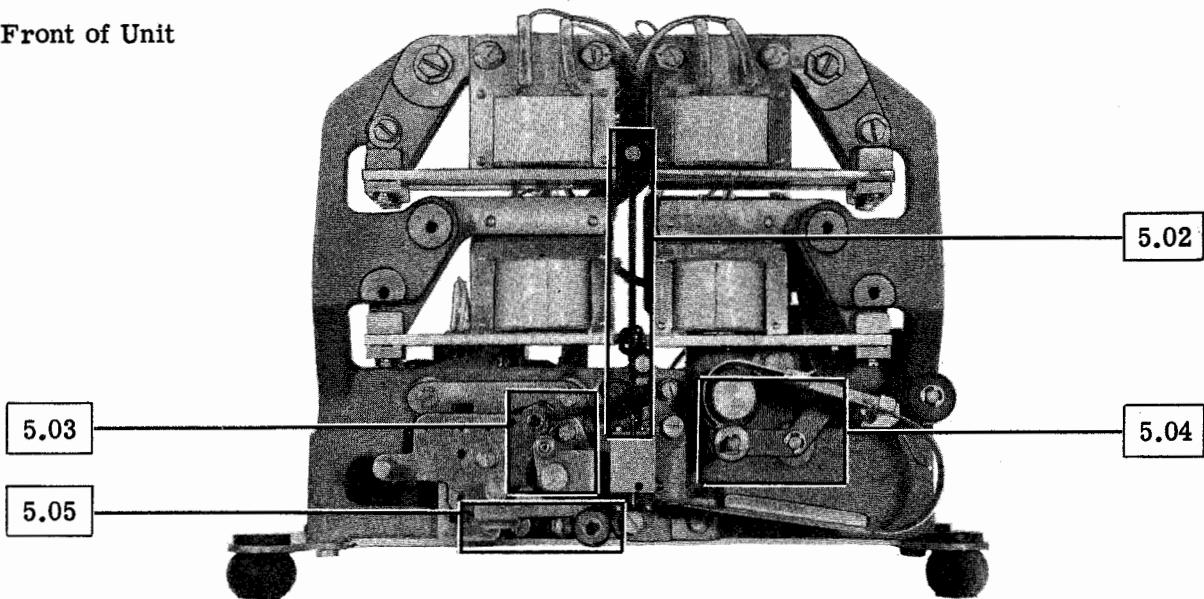
1. GENERAL

1.01 This section is reissued to make it a standard publication and to incorporate engineering changes, new 2400 wpm models, a photoelectric reader and a universal punch block. Arrows in the margins indicate changes or additions.

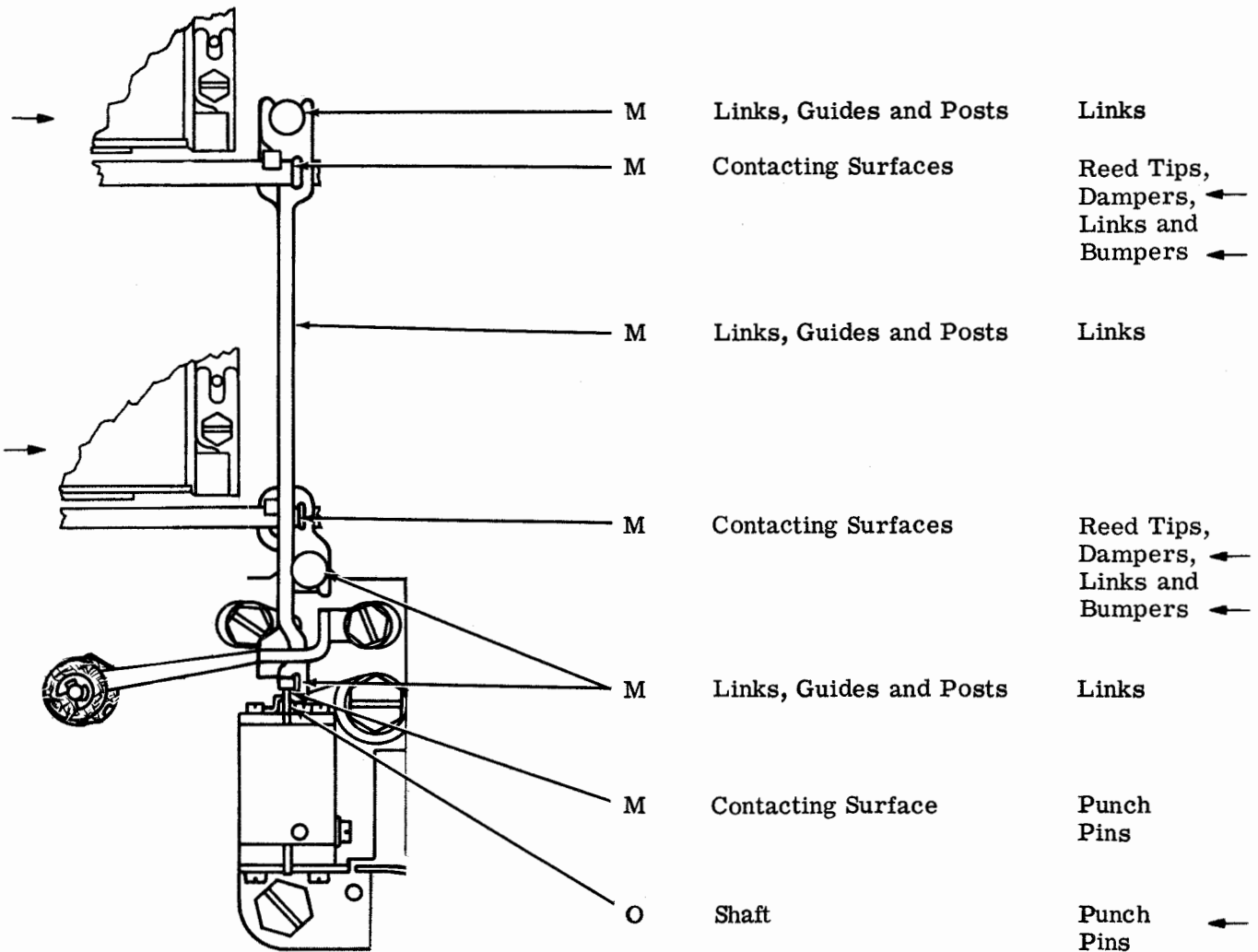
1.02 The oil and grease specified in Paragraph 2 below should be used to lubricate the high speed tape punch. Use oil for lubrication at all of the places listed, except where the use of grease is specified. Oil both loops of all helical springs that exert a nominal tension of less than

5. LUBRICATION POINTS

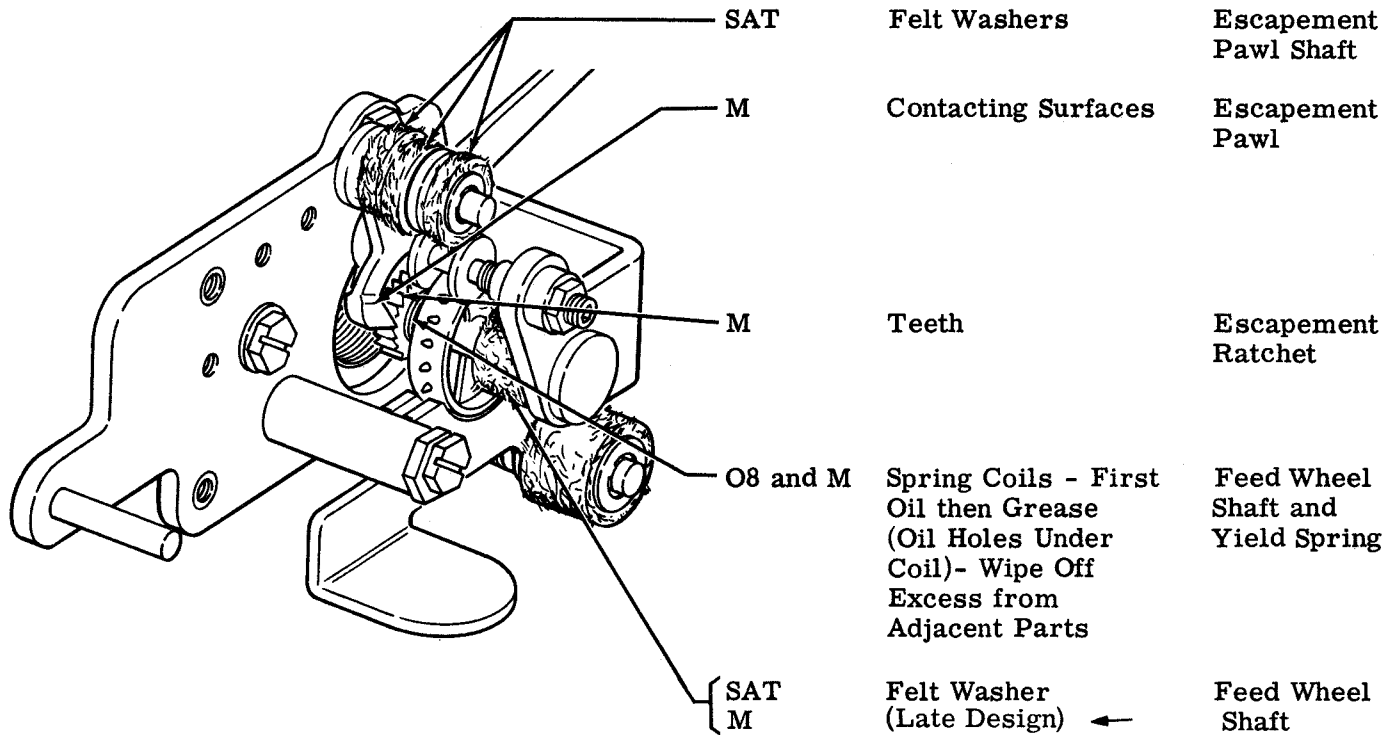
5.01 Front of Unit



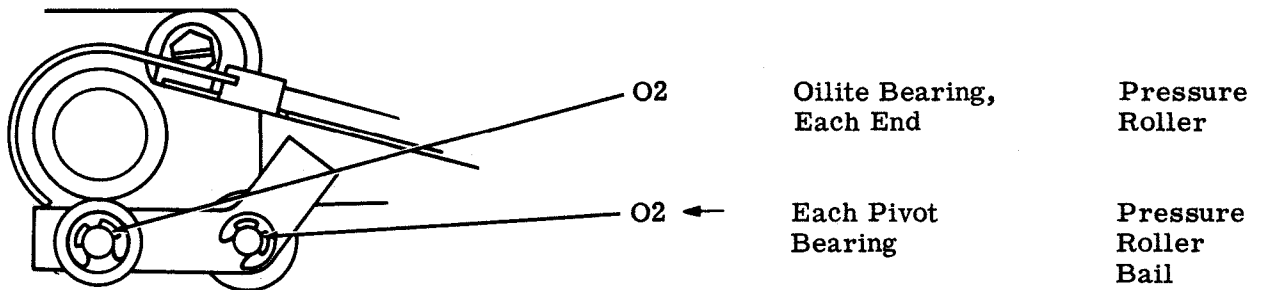
5.02 Links and Reed Tips



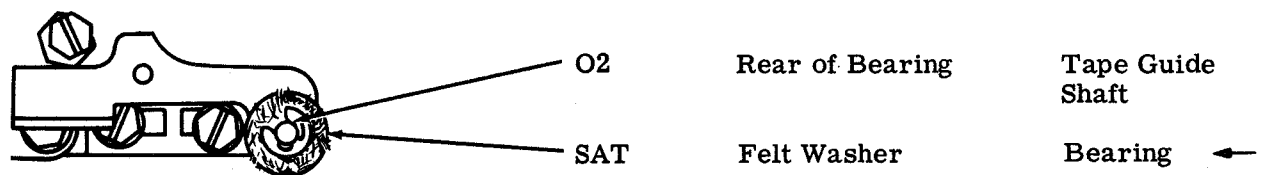
5.03 Escapement Pawls and Ratchet



5.04 Pressure Roller

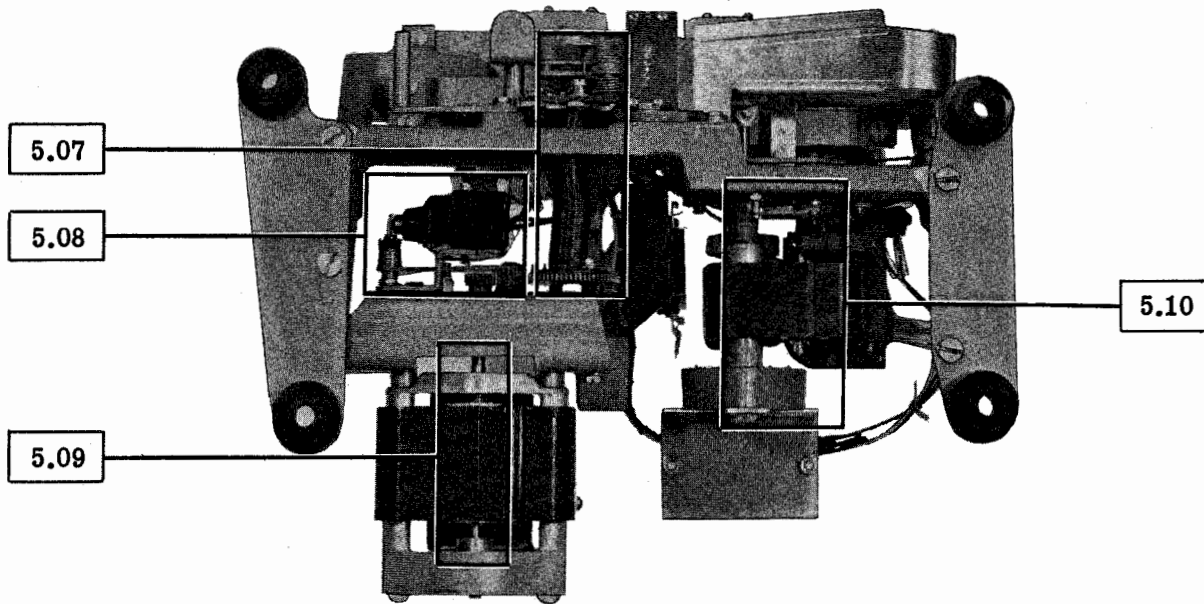


5.05 Tape Guide Shaft

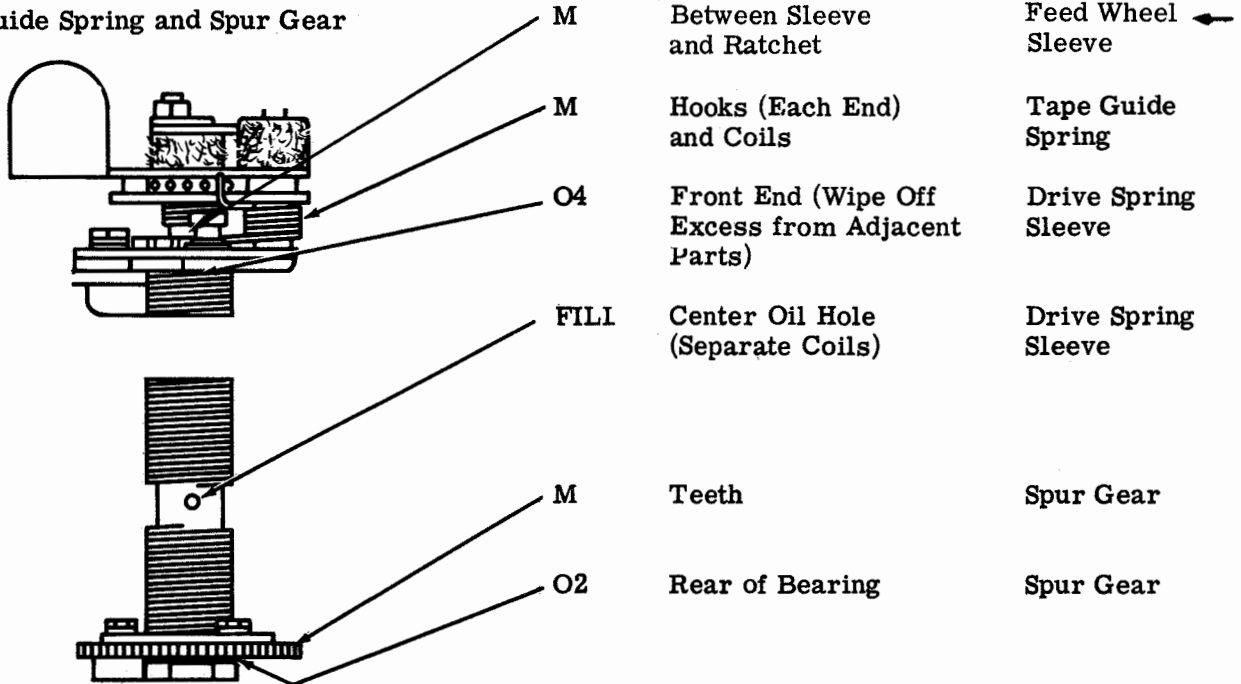


SECTION 592-803-701

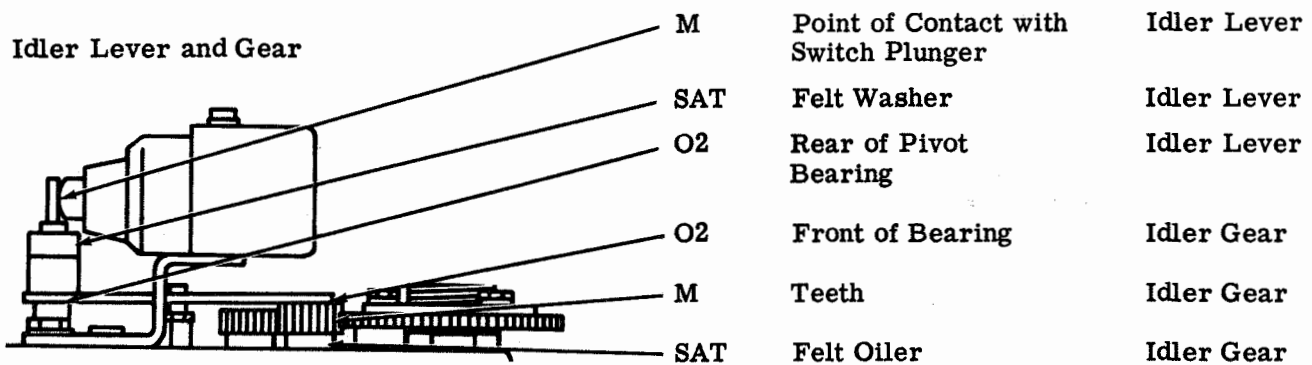
5.06 Bottom of Unit



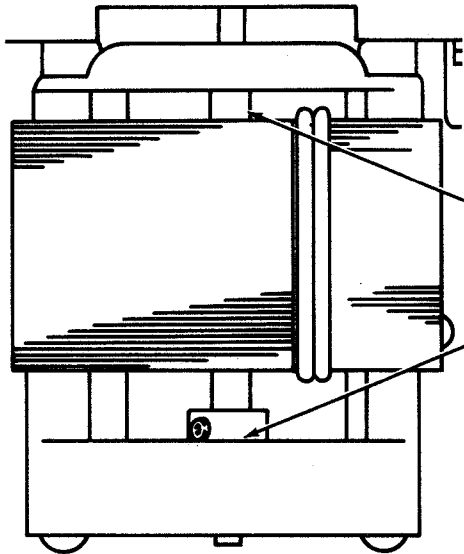
5.07 Tape Guide Spring and Spur Gear



5.08 Idler Lever and Gear



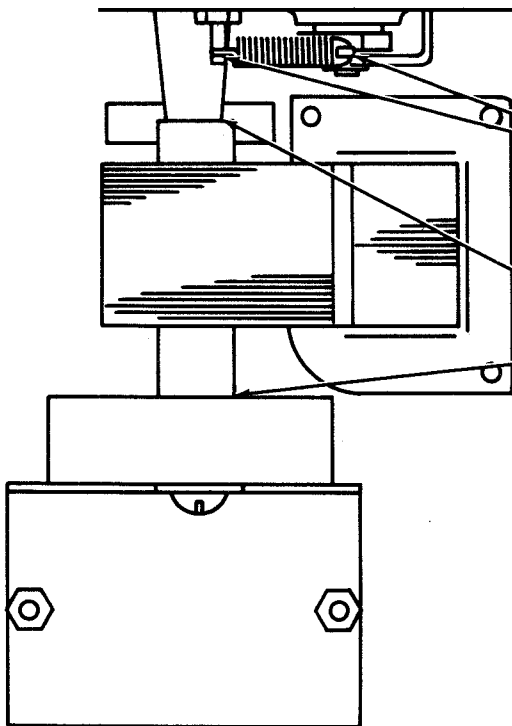
5.09 Tape Feed Motor



M Teeth Feed Motor Pinion

SAT Felt Washer (2) (Inside of Castings) Tape Feed Motor

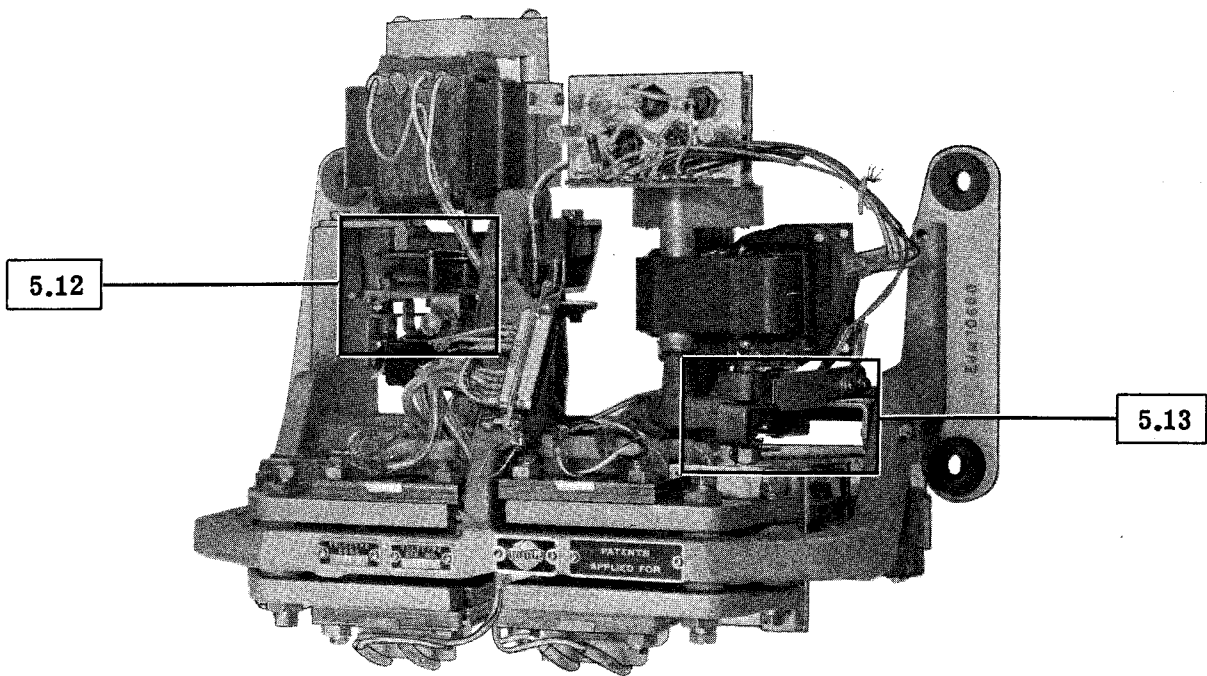
5.10 Tape Puller Motor



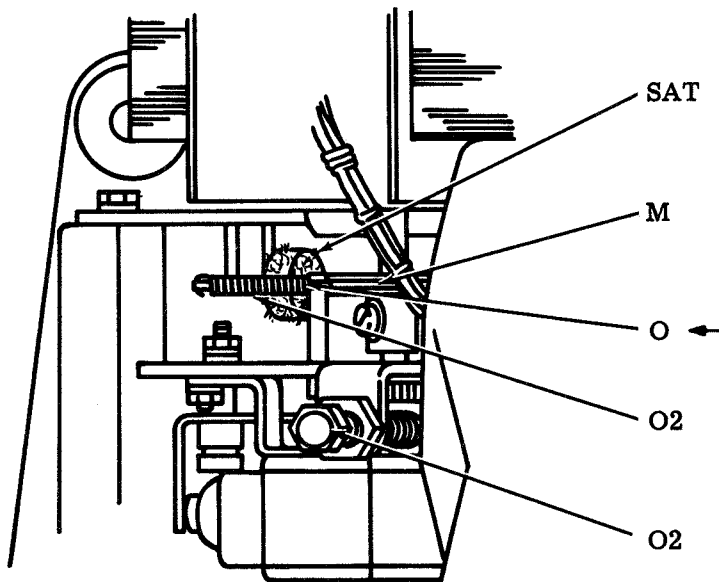
O ← Hooks-Each End Pressure Roller Spring

SAT Felt Washers (2) (Inside of Castings) Tape Puller Motor

5.11 Top of Unit

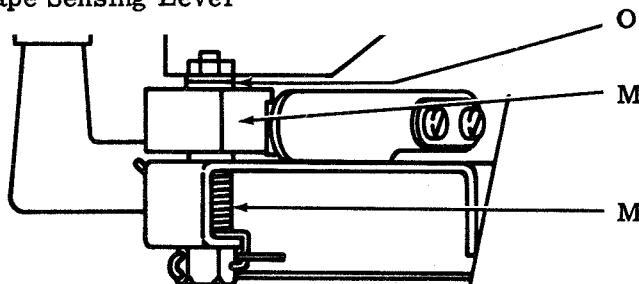


5.12 Antireverse Pawl and Pulley



- SAT Felt Washer Antireverse Pawl and Pulley
- M Pulley Groove Antireverse Pawl and Pulley
- O ← Spring Hooks - Each End Antireverse Pawl Spring
- O2 Lever Pivot Antireverse Pawl and Pulley
- O2 Spring Hooks - Each End Idler Lever Spring

5.13 Tape Sensing Lever



- O Cam Shaft Contact Cam ←
- M Switch Cam Tape Sensing Lever Switch
- M Spring Hooks (Each End) and Coils Tape Sensing Lever Spring