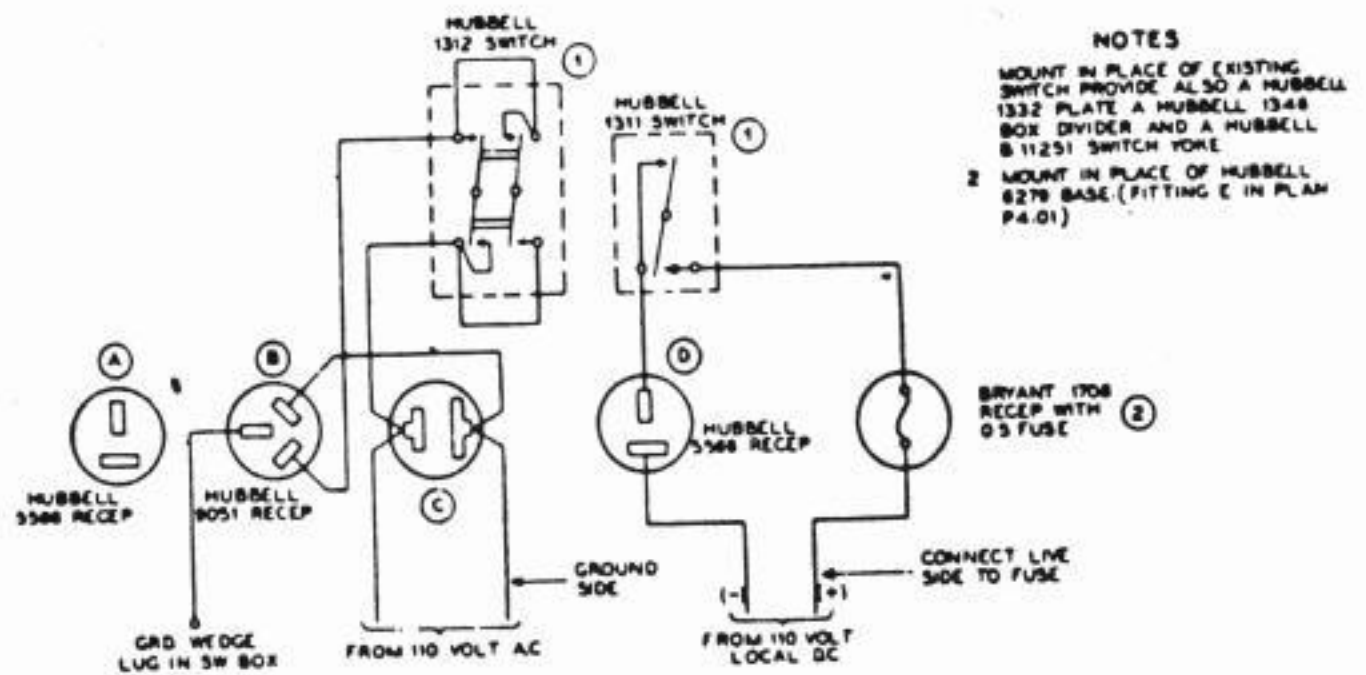


BELL SYSTEM PRACTICES
Teletypewriter and Manual
Telegraph Station and PBX
Installation and Manual

ADDENDUM P30.434
Issue A, 7-1-43
Long Lines Department
Dist. Class. 600AC

1. GENERAL

1.01 This addendum supplements Section P30.434 to add
Connection Plan P9.14.



NOTES
1 MOUNT IN PLACE OF EXISTING SWITCH PROVIDE ALSO A HUBBELL 1332 PLATE A HUBBELL 1348 BOX DIVIDER AND A HUBBELL B 11251 SWITCH YOKE
2 MOUNT IN PLACE OF HUBBELL 8278 BASE (FITTING E IN PLAN P4.01)

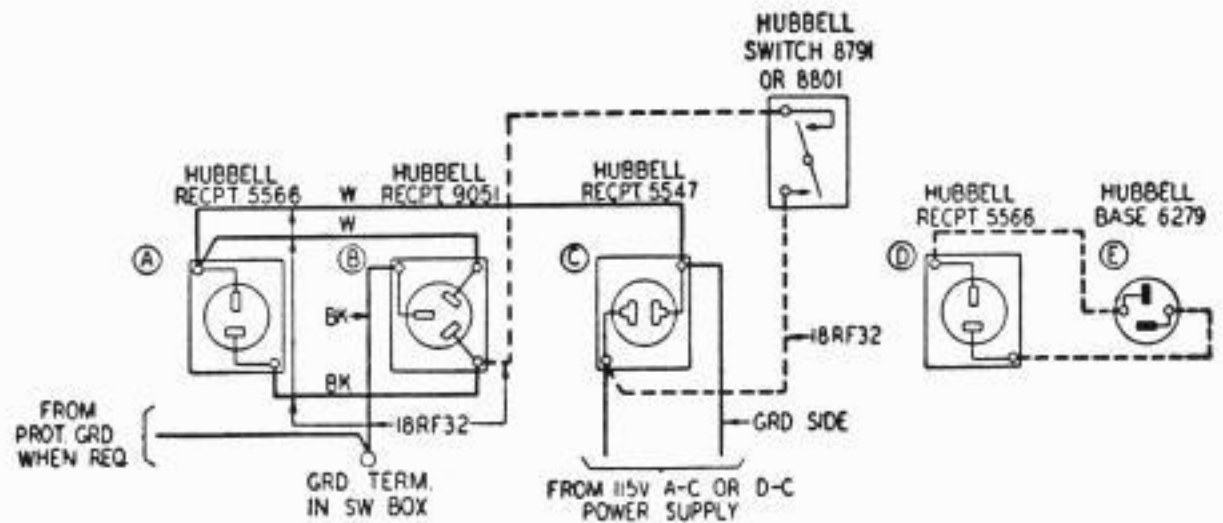
P9.14 15-B TABLE
SEPARATE AC AND DC SUPPLIES
(SEE PM 208 AND PM 207
COMBINED SWITCH CONTROL)

BELL SYSTEM PRACTICES
Teletypewriter and Manual
Telegraph Station and P.B.X.
Installation and Maintenance

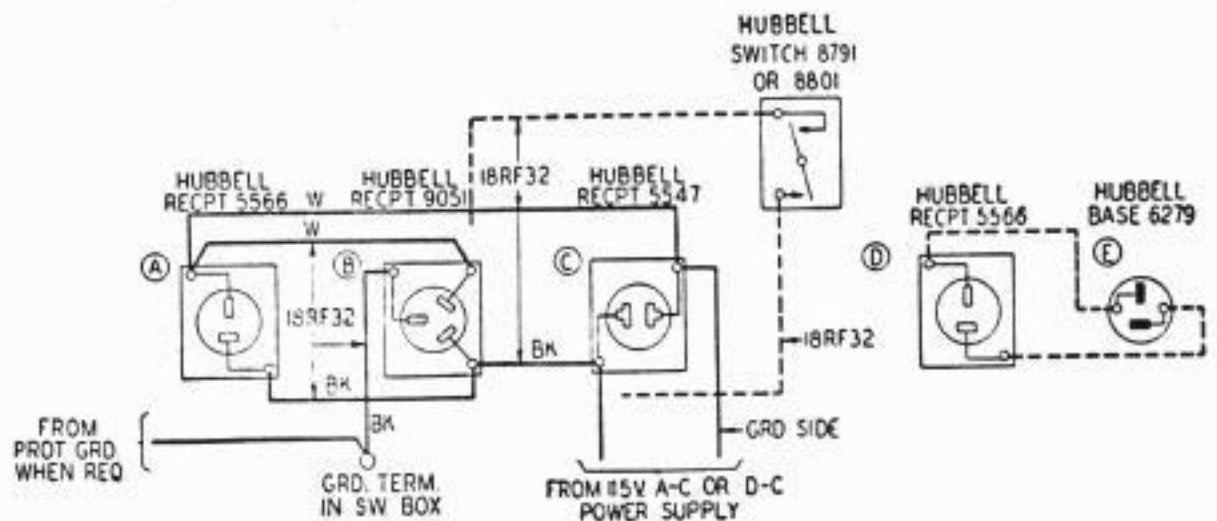
SECTION P30.434
Issue 2, January, 1952
AT&T Co Standard

POWER CONNECTIONS
15B TELETYPEWRITER TABLE

- 1.01 This section contains Power Connection Plans for the 15B Teletypewriter Table.
 1.02 This section is reissued to add Plan P4.03.



P4.01 15B TABLE - SWITCH MOTOR CONTROL



P4.02 15B TABLE - REMOTE MOTOR CONTROL - RECT. OR MOT. GEN. (WHEN USED) OPERATING CONTINUOUSLY

