

American Telephone and Telegraph Company
Printed In U.S.A.

BELL SYSTEM PRACTICES
Teletypewriter and Manual
Telegraph Station and PBX
Installation and Maintenance

SECTION P30.907
Issue C, March, 1957
Long Lines Department
Dist. Class. 600AC

MAINTENANCE PROCEDURES

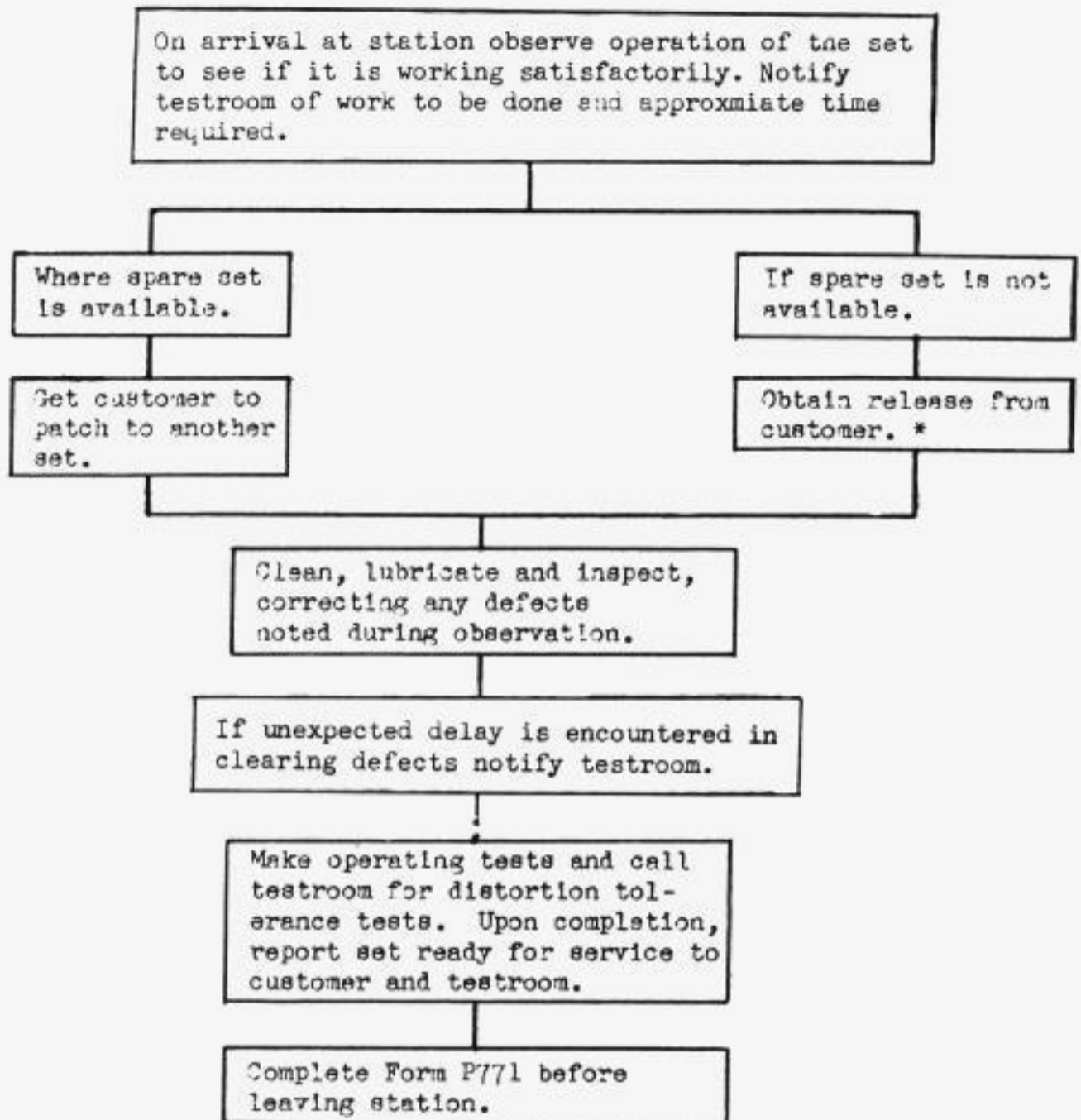
AT

TELETYPEWRITER STATIONS

1. GENERAL

- 1.01 This issue supersedes Issue B. This section is reissued to give more detailed information on the maintenance procedures for work done at customers' stations.
- 1.02 This section outlines a step-by-step procedure to be followed in performing routine inspection and in clearing reported troubles at customers' stations.
- 1.03 The procedure to be followed at stations associated with 81-type switching systems is covered elsewhere.

2. PROCEDURE FOR ROUTINE INSPECTIONS



* If practicable, release period should be arranged before man leaves maintenance center.

3. PROCEDURE FOR CLEARING REPORTED TROUBLE

