

**BELL SYSTEM PRACTICES**  
**Teletypewriter Stations**

**SECTION P31.324**  
**Issue 2, October, 1957**  
**AT&TCo Standard**

# **INSTALLATION OF TP97301 FILTER UNIT FOR LINE RELAY CONTACTS OF 14 TELETYPEWRITERS, TYPING REPERFORATORS AND NON-TYPING SELECTORS**

## **1. GENERAL**

- 1.01 This section furnishes information for the installation of the TP97301 filter unit on 14 teletypewriter bases.
- 1.02 This section is reissued to bring the code number of the unit up to date and replace Section P31.303.
- 1.03 The TP97301 filter unit supersedes the 92228M filter unit. It is designed for use with 14 teletypewriters, typing reperforators and non-typing selectors equipped with either holding magnet selectors or pulling magnet selectors. The function of this filter unit is to suppress radio frequency induction from the line relay contacts of these machines.
- 1.04 The TP97301 filter unit consists of one filter assembly, one TP74614 resistor (2000-600 ohm) and two TP97291 mounting screws.

## **2. INSTALLATION**

- 2.01 Install the TP97301 filter unit as follows:
  - (1) Remove the two TP1253 relay baseplate mounting screws and move the relay baseplate upward and toward the rear.
  - (2) Remove the two TP55344 resistance mounting block mounting screws and install the filter bracket on the rear of the TP71670 resistance mounting blocks securing the

filter bracket with the TP97291 screws. Tighten the mounting screws.

- (3) Position the base cable in the filter bracket notch.
- (4) Unsolder all the leads on the TP75436 (2000-1000 ohm) resistor. This resistor has green and black leads connected to the terminal nearest the edge of the base.
- (5) Replace the TP75436 resistor with the TP74614 resistor furnished, placing the 600-ohm end toward the edge of the base.
- (6) Replace the leads removed from the old resistor on the corresponding terminals of the new resistor as follows:
  - (a) Connect the short black lead and the green lead to the outside terminal.
  - (b) Connect the long black lead to the middle terminal.
  - (c) Connect the yellow lead to the inside terminal.
- (7) Lower the relay baseplate to its original position and remount it with the two TP1253 screws.

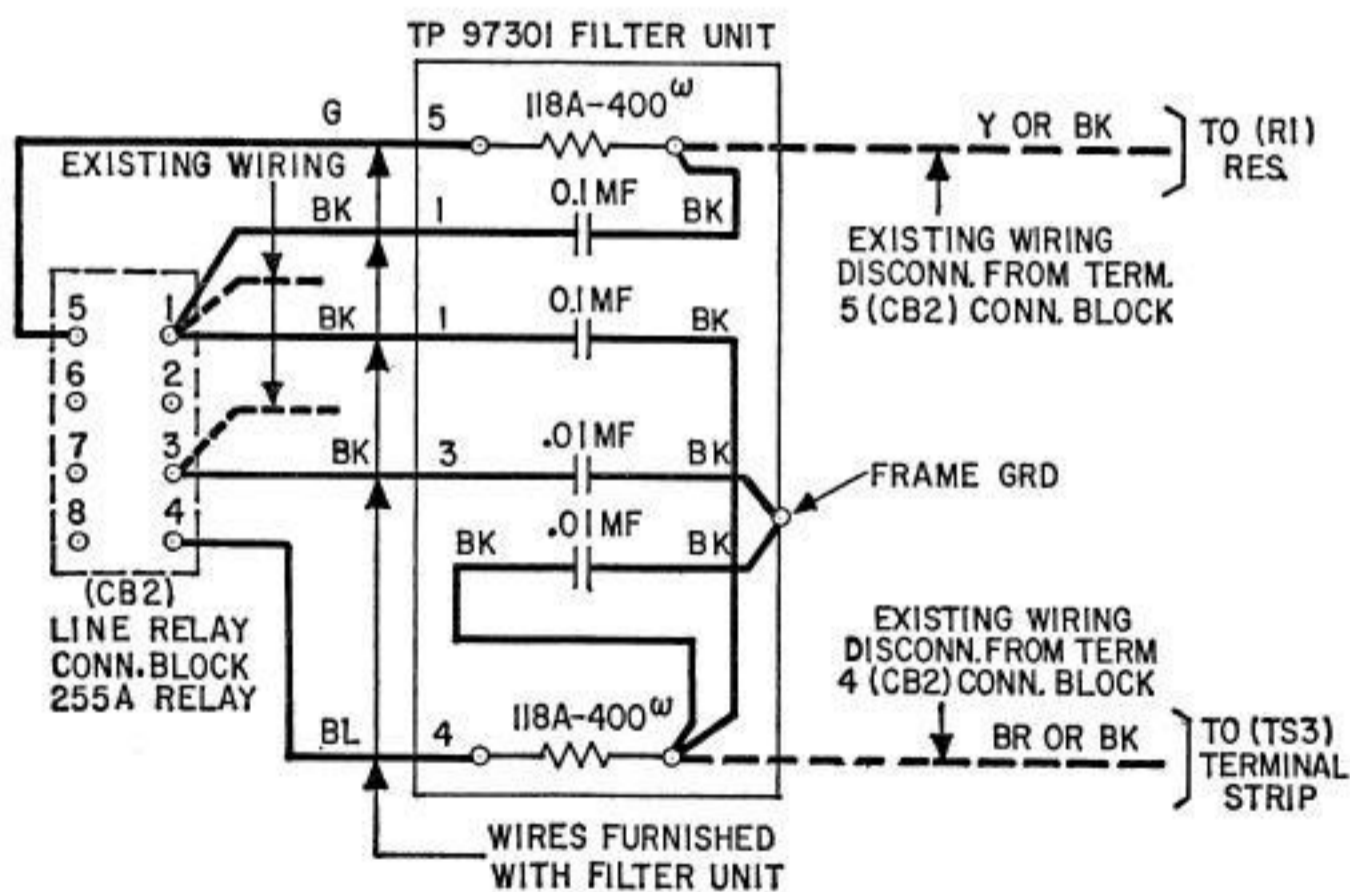


Fig. 1

2.02 Refer to Fig. 1 and connect the filter as follows:

- (1) Unsolder the lead connected to relay terminal 4 and connect it to the upper terminal of the filter resistor 4.
- (2) Unsolder the lead connected to relay terminal 5 and connect it to the upper terminal of the filter resistor 5.
- (3) Connect the short lead from the lower terminal of filter resistor 4 to terminal 4 of the relay connecting block.
- (4) Connect the short lead from the lower terminal of filter resistor 5 to terminal 5 of the relay connecting block.
- (5) Connect the condenser lead 3 to terminal 3 of the relay connecting block in which the line relay is operated on neutral signals. If the line relay is to be operated on polar signals with the two relay windings in series, connect the filter condenser lead 3 to terminal 2 of the relay connecting block.
- (6) Connect the two filter leads marked 1 to terminal 1 of the relay connecting block.
- (7) Check the connections of the filter with Fig. 1.