

**BELL SYSTEM PRACTICES**  
Teletypewriter and Data Stations

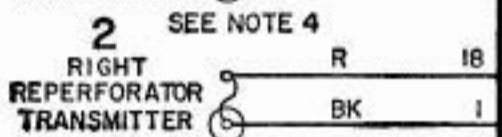
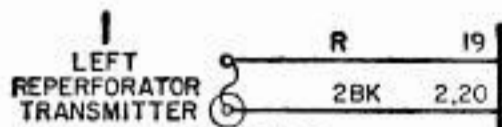
**SECTION P34.323**  
Issue 1, August, 1960  
**AT&T Co Standard**

## **28 TYPE APPARATUS CABINETS**

### **WIRING DIAGRAM**

#### **1. GENERAL**

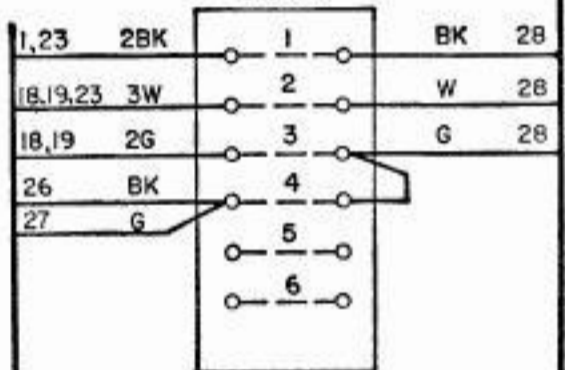
- 1.01 This section shows the wiring of the 28B apparatus cabinet which is used in the 81D1 switching system.



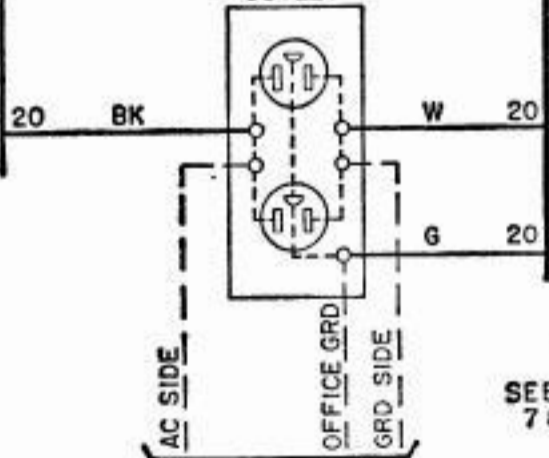
SEE NOTE 4



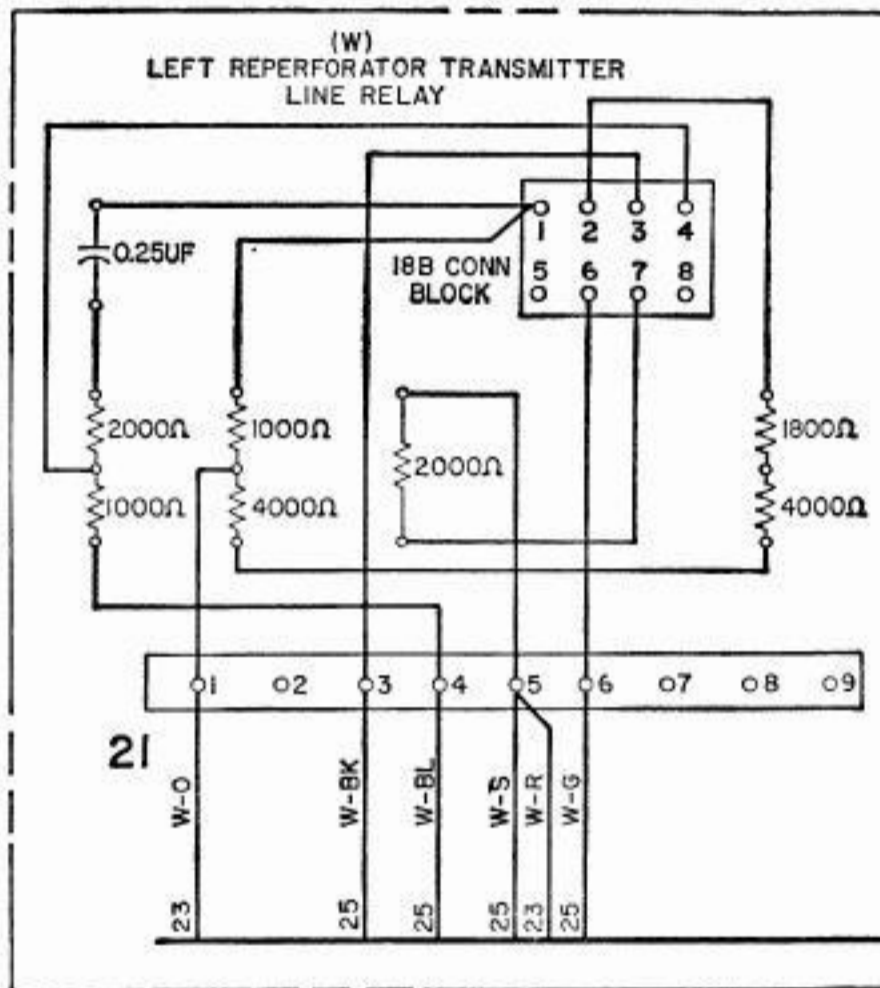
**20**  
POWER TERMINAL BLOCK



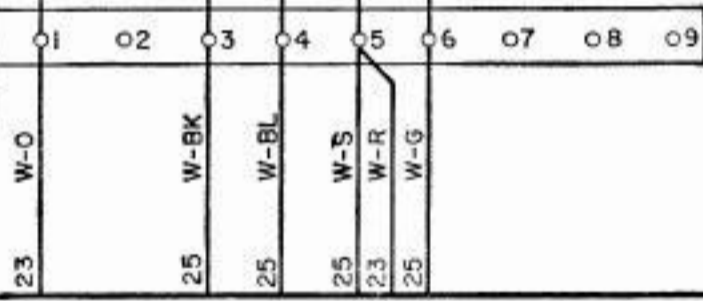
**28**  
CONVENIENCE OUTLET



SEE NOTE 1

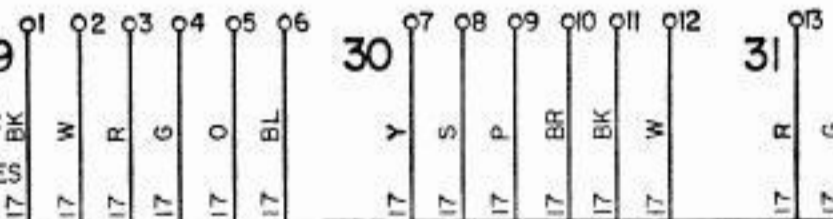


**21**



**29**

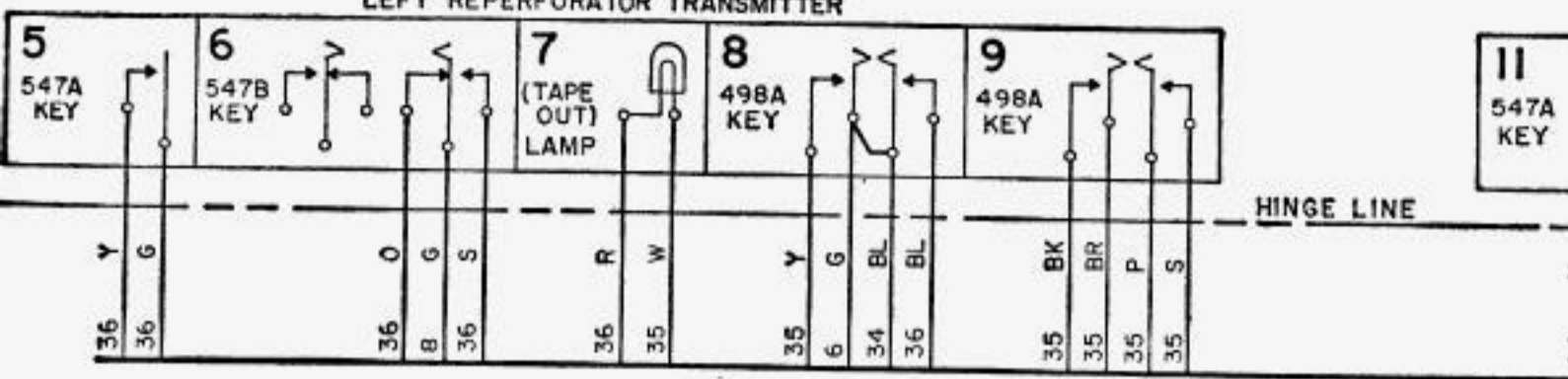
(B)  
UPPER TS  
SEE NOTES 7 & 8



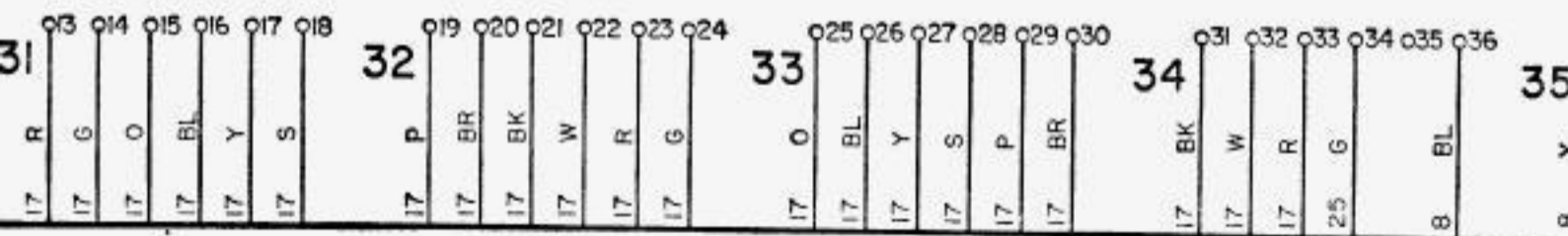
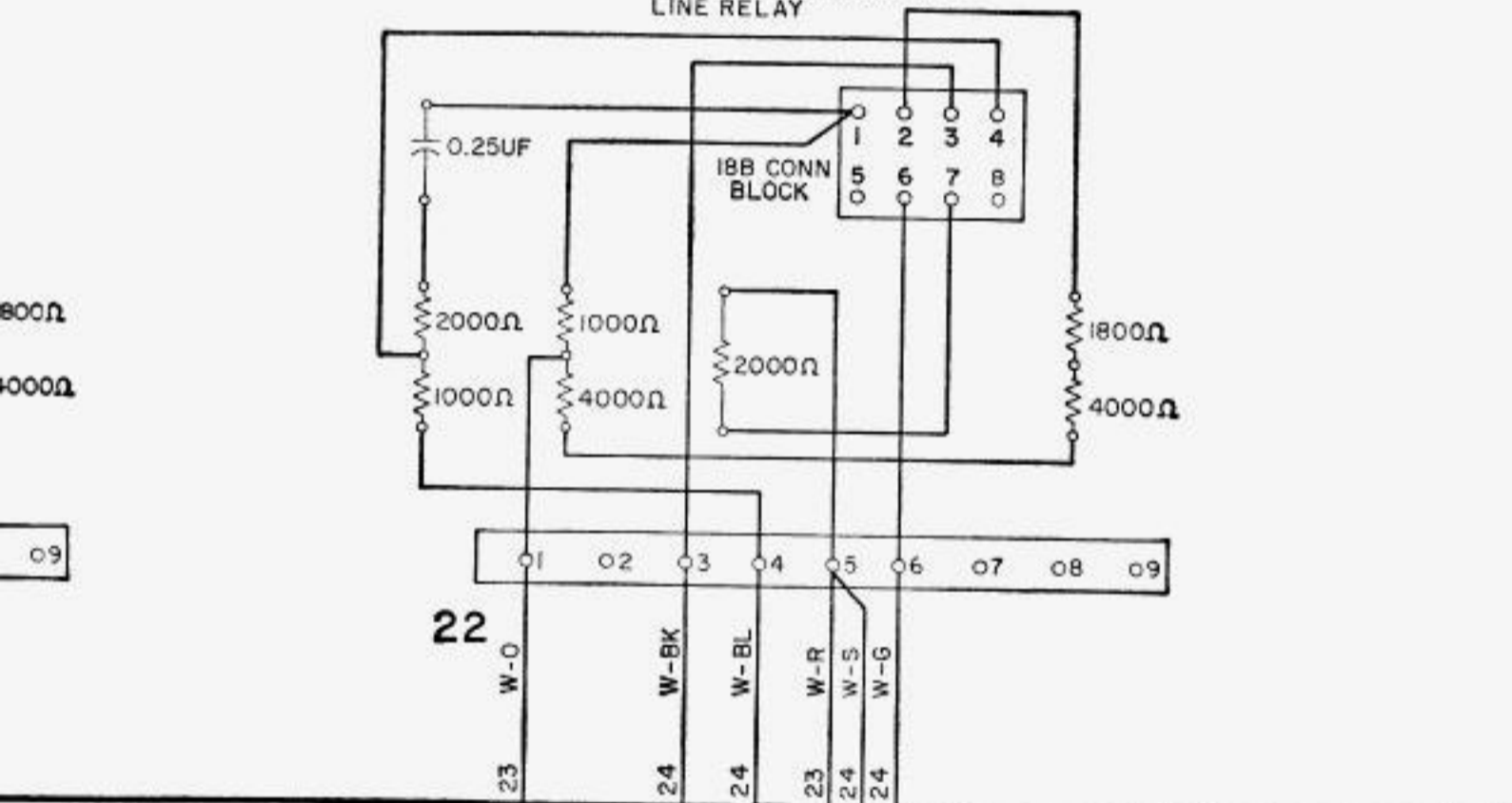
**30**

**31**

LEFT REPERFORATOR TRANSMITTER

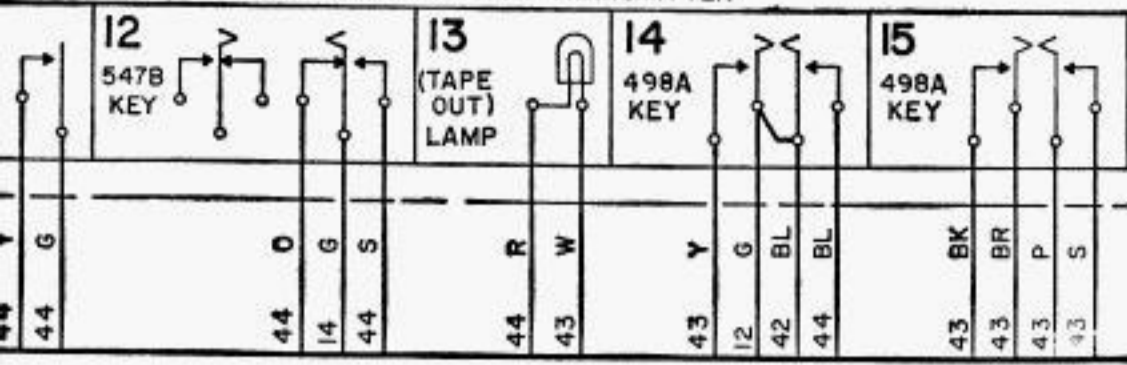


(AW)  
RIGHT REPERFORATOR TRANSMITTER  
LINE RELAY

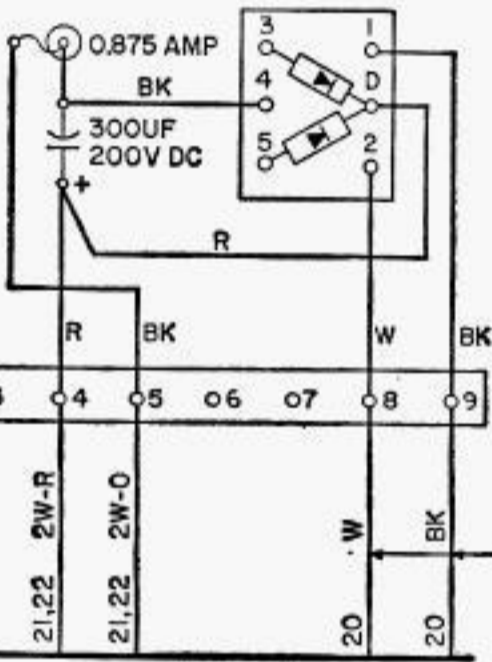


28B Apparatus Cabinet

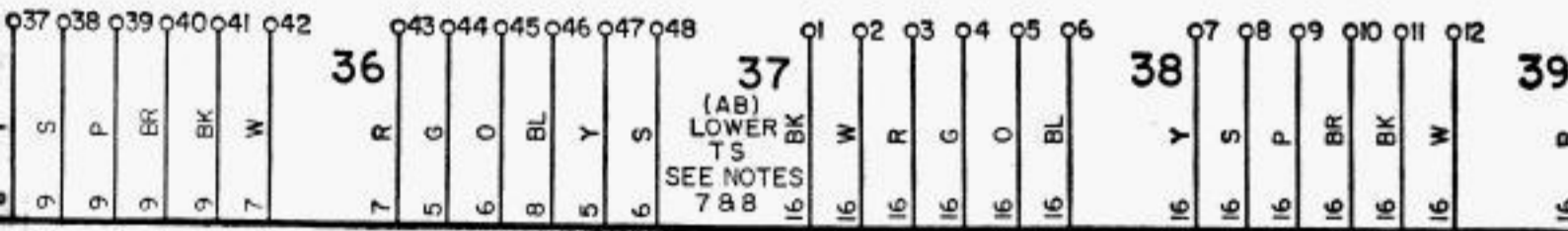
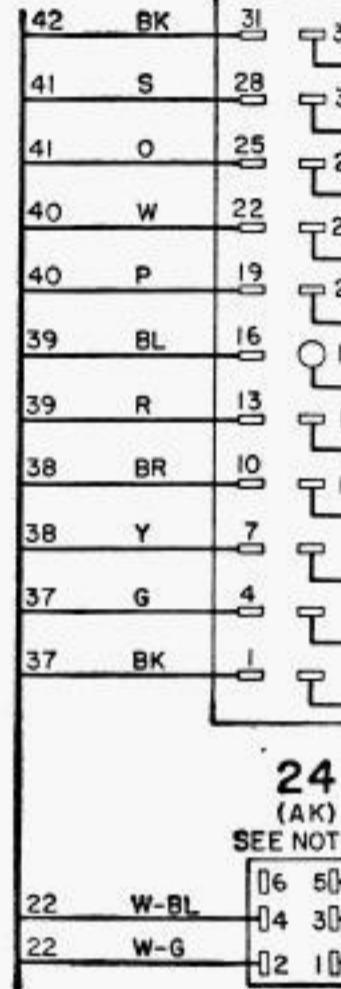
RIGHT REPERFORATOR TRANSMITTER



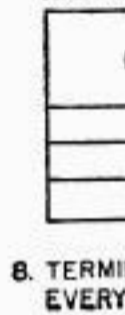
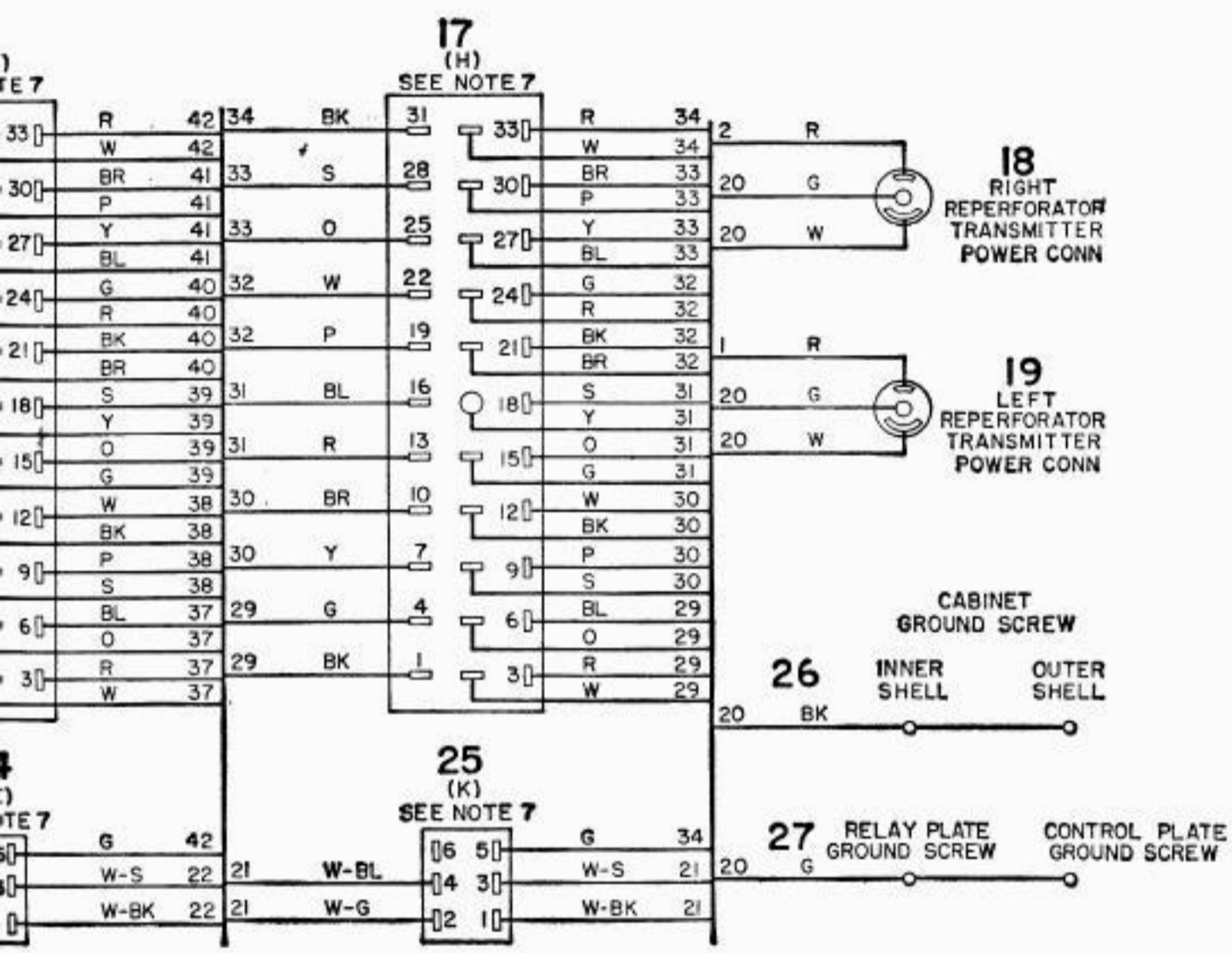
(J) TP 16236I RECTIFIER ASSEMBLY



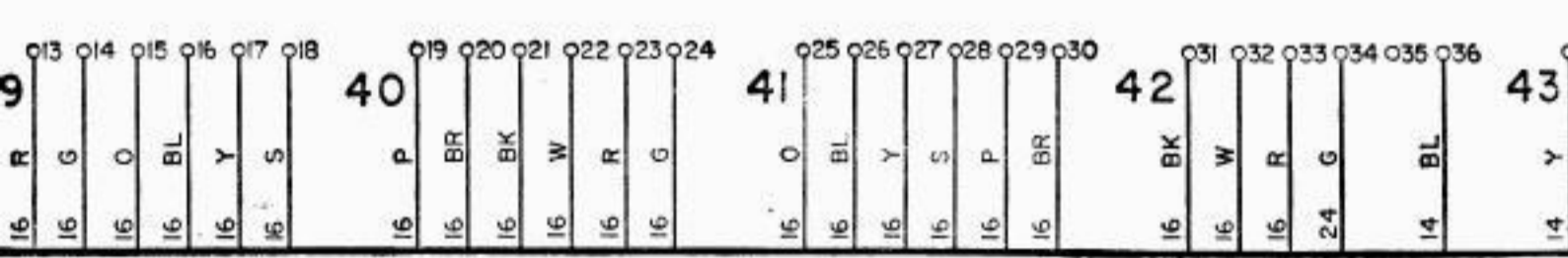
23



- NOTES:
1. UNIT W INPUT
  2. CONNE
  3. WIRES
  4. FUSE P RATED
  5. EXTERI SIDE O LEFT RIGHT
  6. CIRCUIT ION A
  7. AS VIE NATION

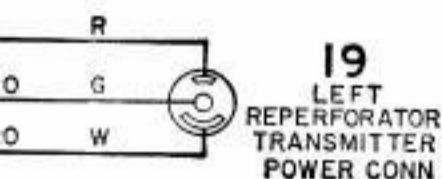


8. TERMIN EVERY



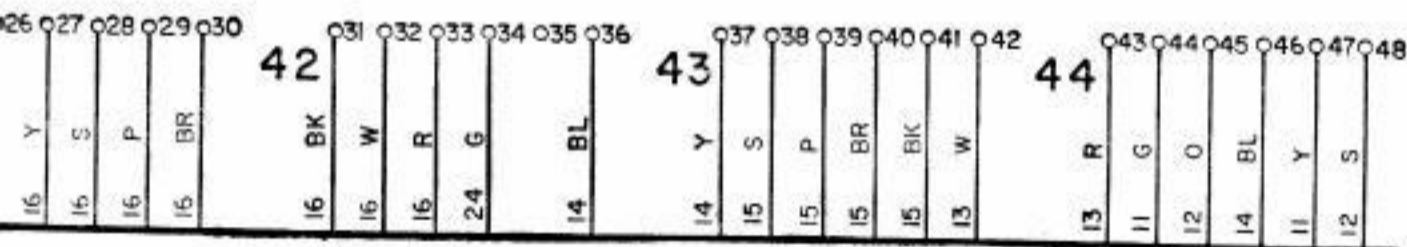
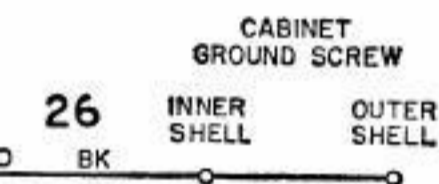
**NOTES:**

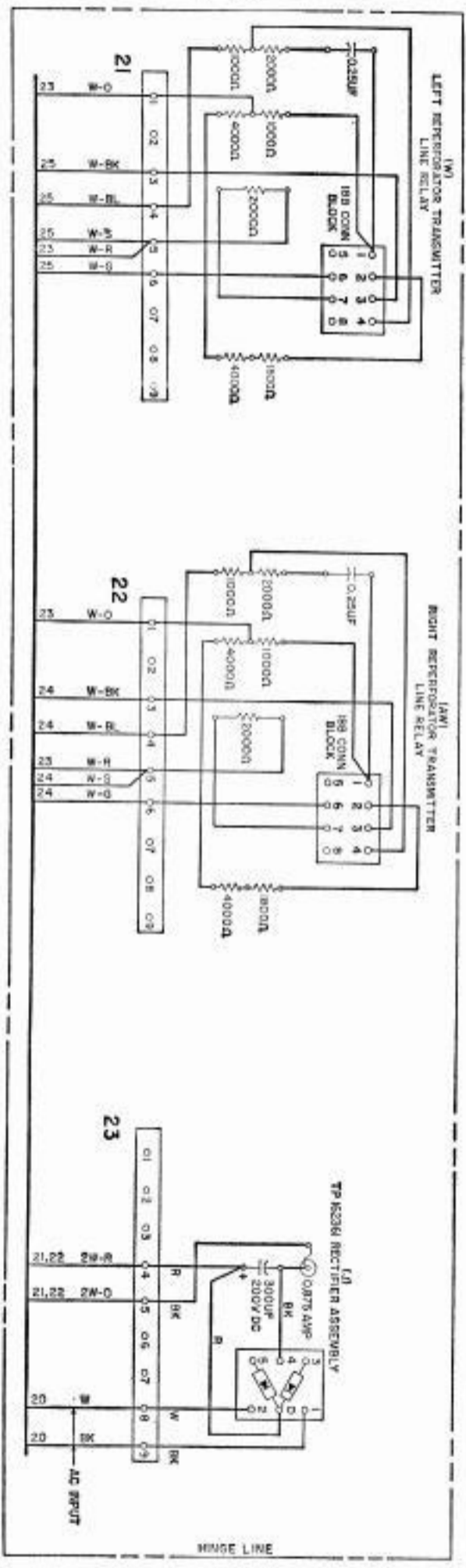
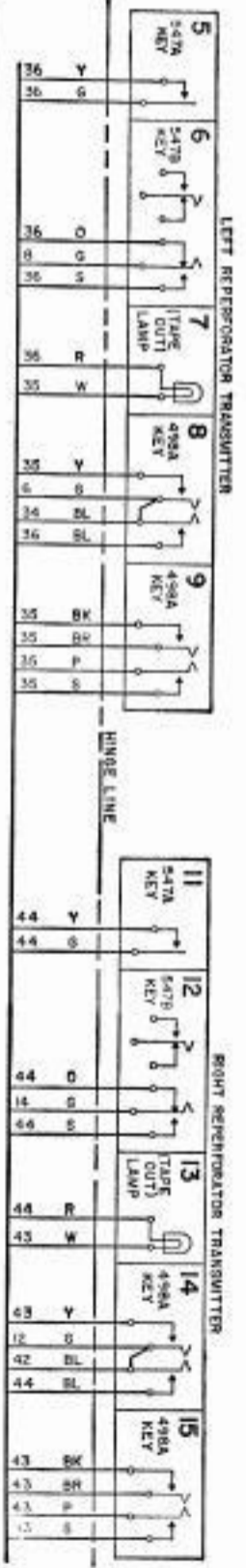
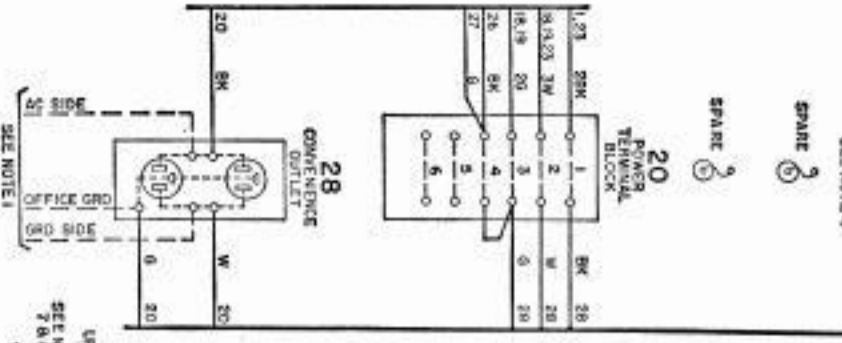
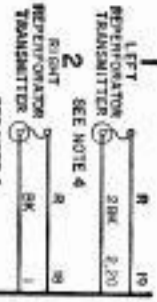
1. UNIT WIRED FOR 115 VOLTS 50 TO 60 CYCLE AC POWER INPUT ONLY.
2. CONNECTORS VIEWED FROM SOLDER TERMINAL ENDS.
3. WIRES NOT MARKED ARE SURFACE WIRING.
4. FUSE PROTECTION FOR REPERFORATOR TRANSMITTERS RATED AT 4 AMP.
5. EXTERNAL SIGNAL LINE CONNECTIONS MADE TO RIGHT SIDE OF 120 POINT TERMINAL BLOCK AS FOLLOWS:  
LEFT REPERFORATOR TRANSMITTER B-1 AND B-2  
RIGHT REPERFORATOR TRANSMITTER AB-1 AND AB-2
6. CIRCUIT SHOWN FOR .06 AMP SELECTOR MAGNET OPERATION AND .02 AMP SIGNAL LINE OPERATION.
7. AS VIEWED FROM THE FRONT OF THE CABINET THE DESIGNATIONS ARE AS FOLLOWS:



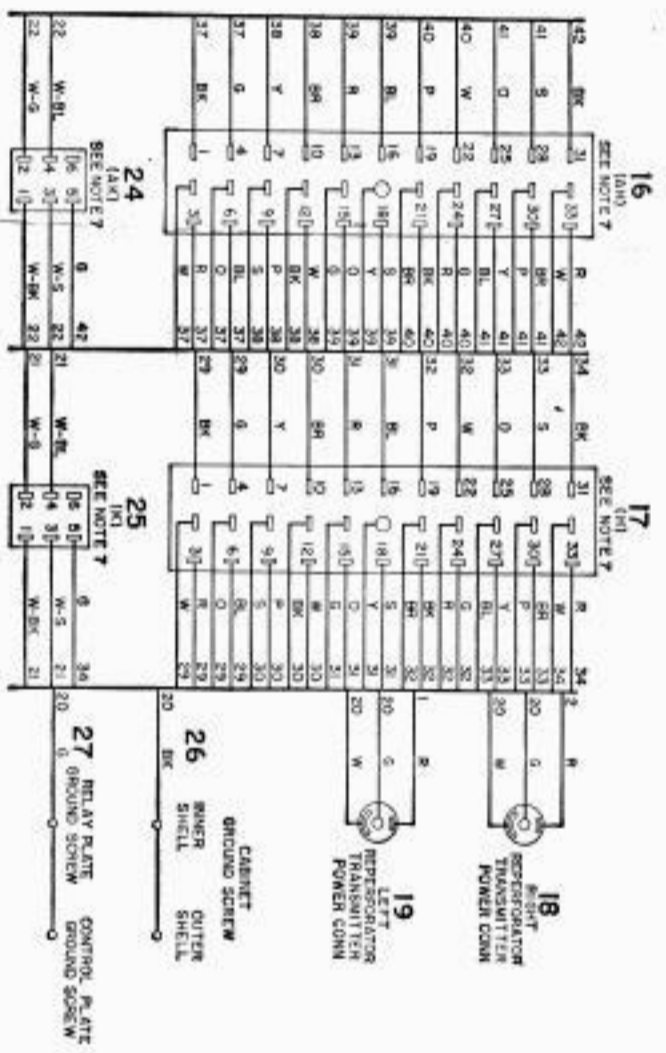
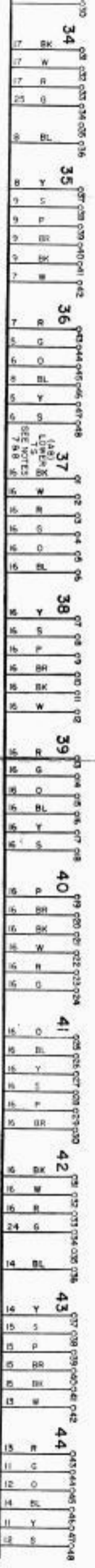
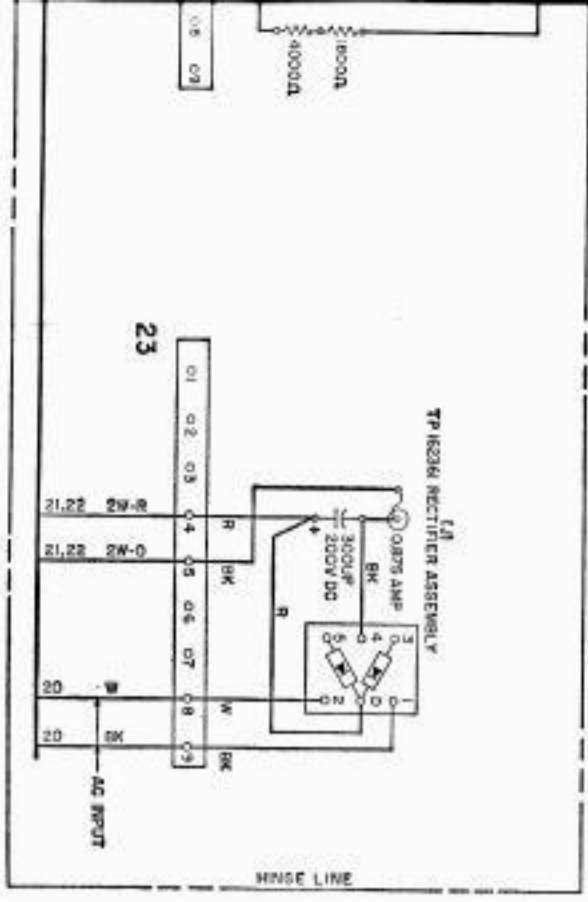
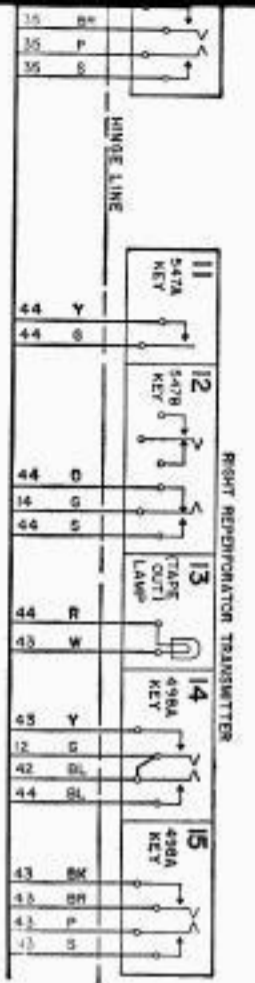
RIGHT REPERFORATOR TRANSMITTER	LEFT REPERFORATOR TRANSMITTER
(AK) CONN	(K) CONN
(AH) CONN	(H) CONN
(AB) TS (LOWER)	(B) TS (UPPER)

8. TERMINAL STRIPS (B) & (AB) HAVE 120 TERMINALS; USE EVERY OTHER ROW STARTING WITH NO.1 AT TOP ROW.





25B Apparatus Cabinet



- NOTES:
1. UNIT WIRED FOR 115 VOLTS 50 TO 60 CYCLE AC POWER INPUT ONLY.
  2. CONNECTORS VIEWED FROM SOLDER TERMINAL ENDS.
  3. WIRES NOT MARKED ARE SURFACE WIRING.
  4. FUSE PROTECTION FOR REPERATOR TRANSMITTERS RATED AT 4 AMP.
  5. EXTERNAL SIGNAL LINE CONNECTIONS MADE TO RIGHT SIDE OF 120 POINT TERMINAL BLOCK AS FOLLOWS:  
LEFT REPERATOR TRANSMITTER B-1 AND B-2  
RIGHT REPERATOR TRANSMITTER AB-1 AND AB-2
  6. CIRCUIT SHOWN FOR .06 AMP SELECTOR MAGNET OPERATION AND .02 AMP SIGNAL LINE OPERATION.
  7. AS VIEWED FROM THE FRONT OF THE CABINET THE DESIGNATIONS ARE AS FOLLOWS:
- | RIGHT REPERATOR TRANSMITTER (AK) CONN (LAMP) CONN (LAMP) T3 (LOWER) | LEFT REPERATOR TRANSMITTER (KI) CONN (HI) CONN (BITS) (UPPER) |
|---|---|
|   |   |
8. TERMINAL STRIPS (B) & (A) HAVE 120 TERMINALS. USE EIGHT GREEN ROW STARTING WITH (N) AT TOP ROW.