

BELL SYSTEM PRACTICES
Teletypewriter and Manual
Telegraph Station and P.B.X.
Installation and Maintenance

SECTION P35.331
Issue 4, January, 1949
AT&T Co Standard

WIRING DIAGRAM

14-TYPE TRANSMITTER-DISTRIBUTORS

1. GENERAL

1.01 This section covers the wiring of No. 14-type transmitter-distributors. It is reissued to include Figs. 6, 7 and 8. Changes in text are indicated by an arrow.

1.02 The diagrams show the wiring of the machines as they are received from the factory. Figs. 1 to 5 are based on ESX-619352, Issue 7. Fig. 6 is based on ESR-631829, Issue 2. Figs. 7 and 8 are based upon BR-214638, Issue 1.

1.03 The wiring shown in Figs. 1, 2 and 3 for transmitter-distributors which are used at teletypewriter stations, covers the a-c clutch magnet which is adapted for use on either a-c or d-c power supply.

1.04 Figs. 4 and 5 cover the wiring of test message transmitter-distributors which are used in connection with central office apparatus.

1.05 Fig. 6 shows the type of transmitter-distributor which is used at the switching center of an 81-type system. Figs. 7 and 8 are types of transmitter-distributors which are used at an outlying station of an 81-type system.

1.06 Changes in the wiring of these units required to meet various operating features are shown in "M" plans in the section covering internal wiring variations in 14-type teletypewriter apparatus.

1.07 Some of the earlier sets were shipped with a strap across the 350-ohm portion of the resistor in series with the start magnet. This strap should be removed when the start magnet is operated on d-c power, otherwise, the 175-ohm resistor will severely overheat. The 350-ohm resistor should be strapped out when the a-c start magnet is operated on a-c power.

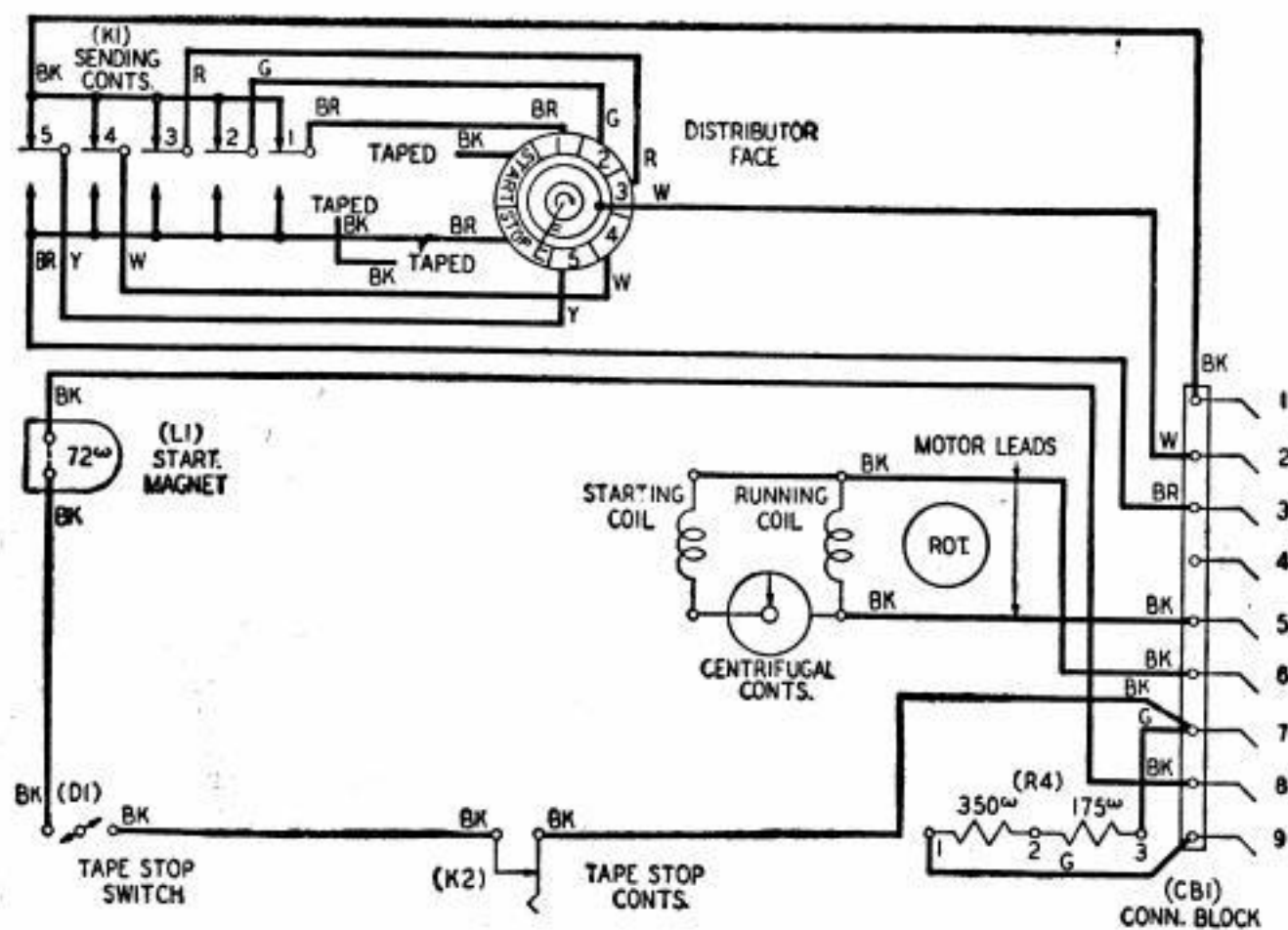


Fig. 1—No. 14-A, B, H, J, Y, AE and AU Transmitter-Distributors (Synchronous Motor)

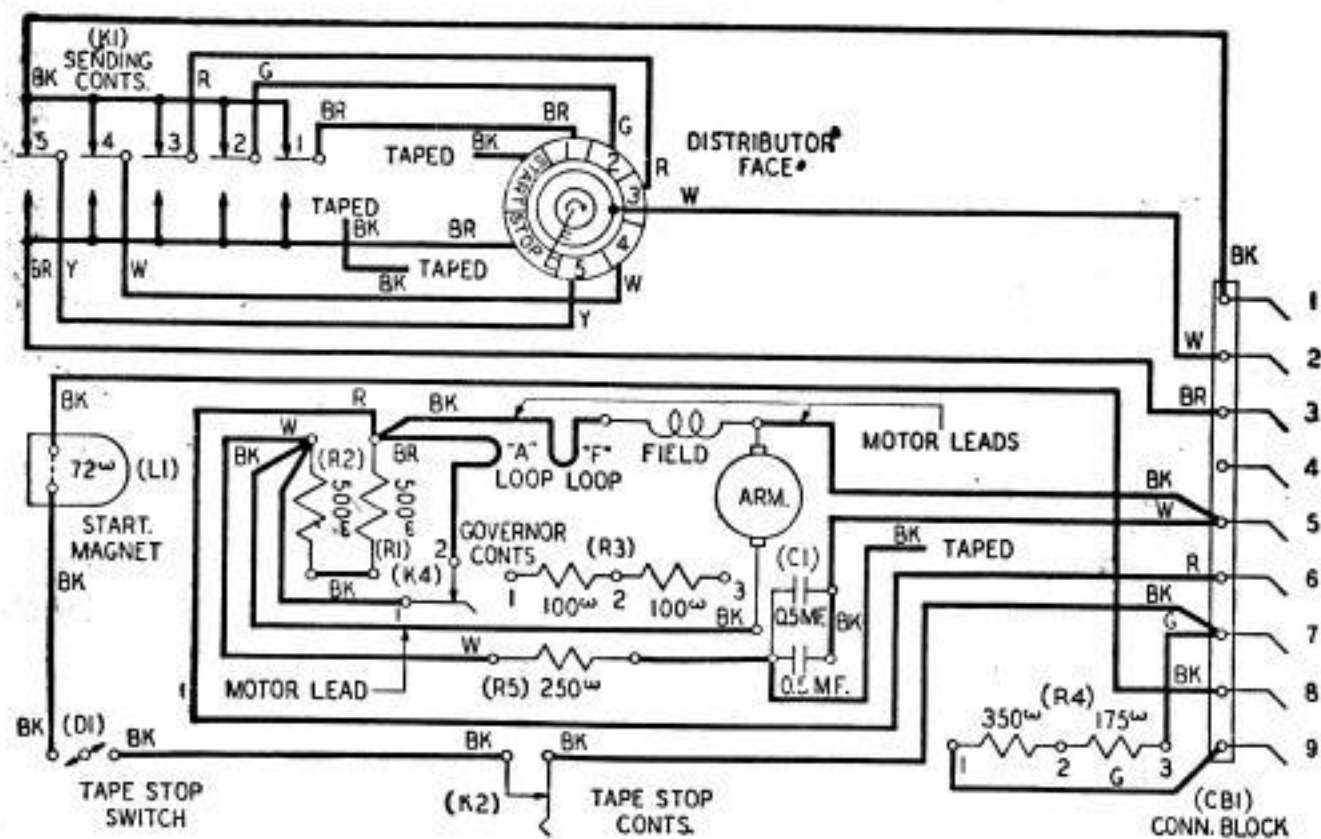
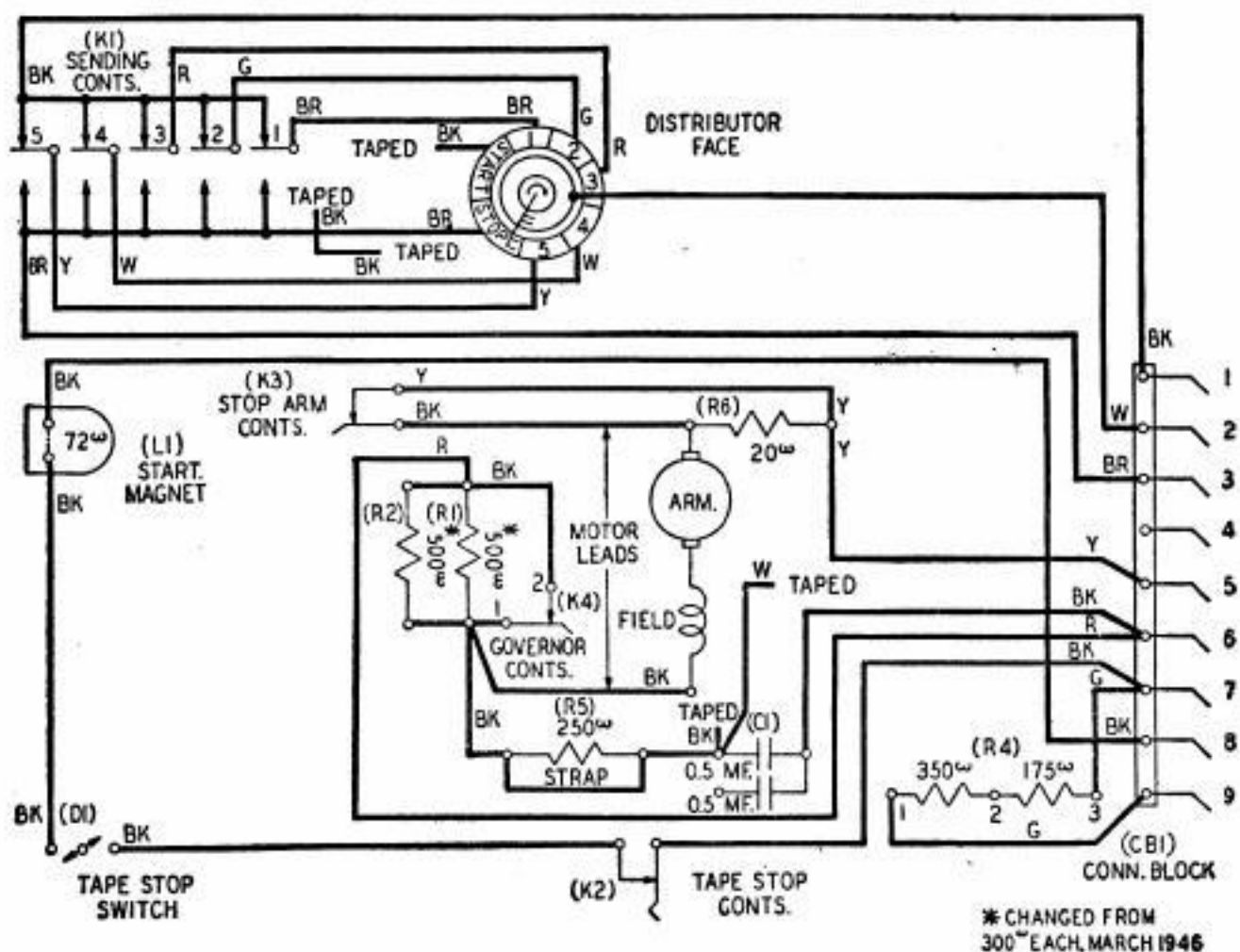


Fig. 2—No. 14-C, K and AF Transmitter-Distributors (D-C Shunt Motor)



* CHANGED FROM 300^Ω EACH, MARCH 1946

Fig. 3—No. 14-D, L and BA Transmitter-Distributors (A-C Series Motor)

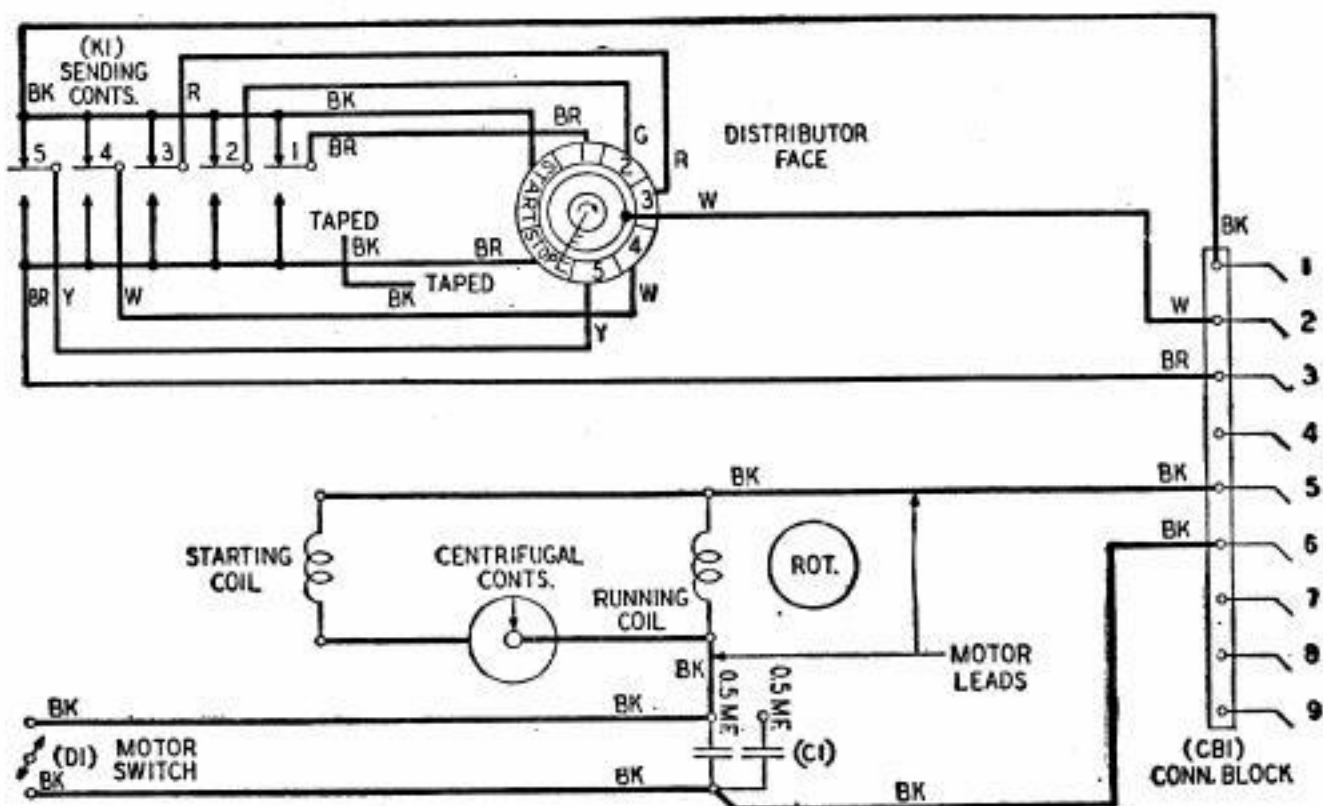
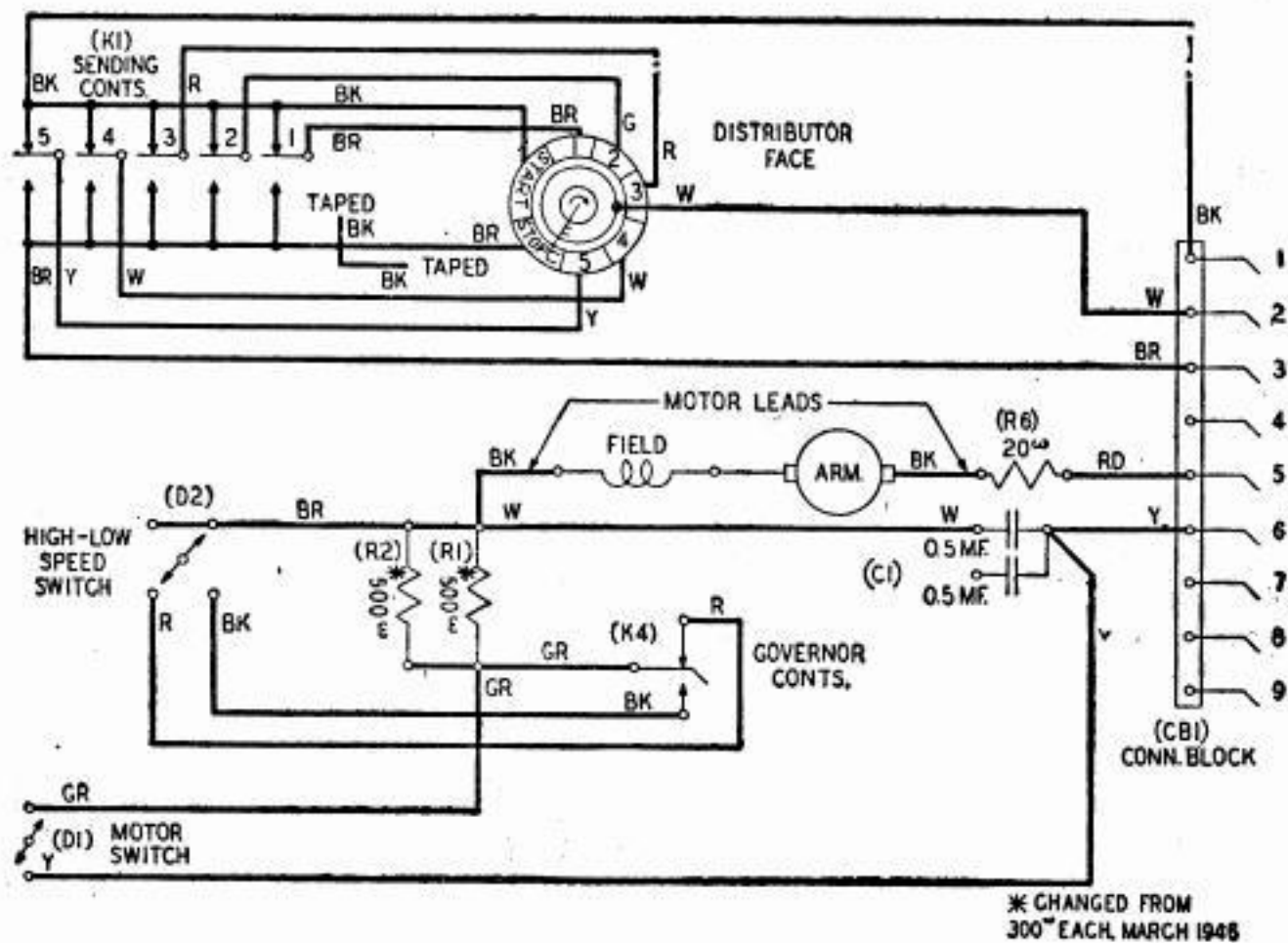


Fig. 4—No. 14-F, G, P and AW Transmitter-Distributors (Synchronous Motor)

Test Message Transmitter-Distributor for Central Office Use



**Fig. 5—No. 14-M and AT Transmitter-Distributors
(A-C Series Motor)
Test Message Transmitter-Distributor for Central Office Use**

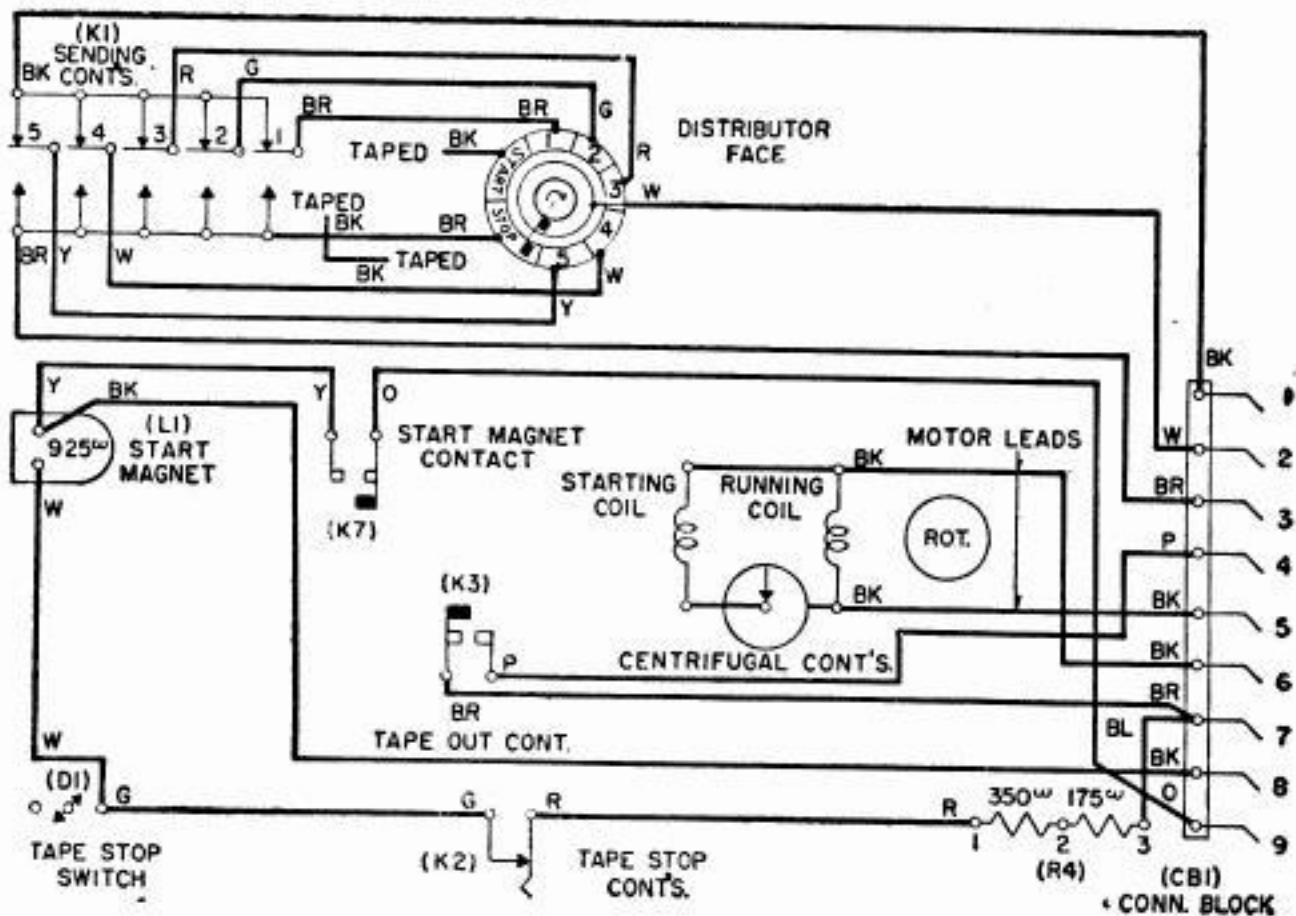


Fig. 7—No. 14 BD and BE Transmitter-Distributors (Synchronous Motor)

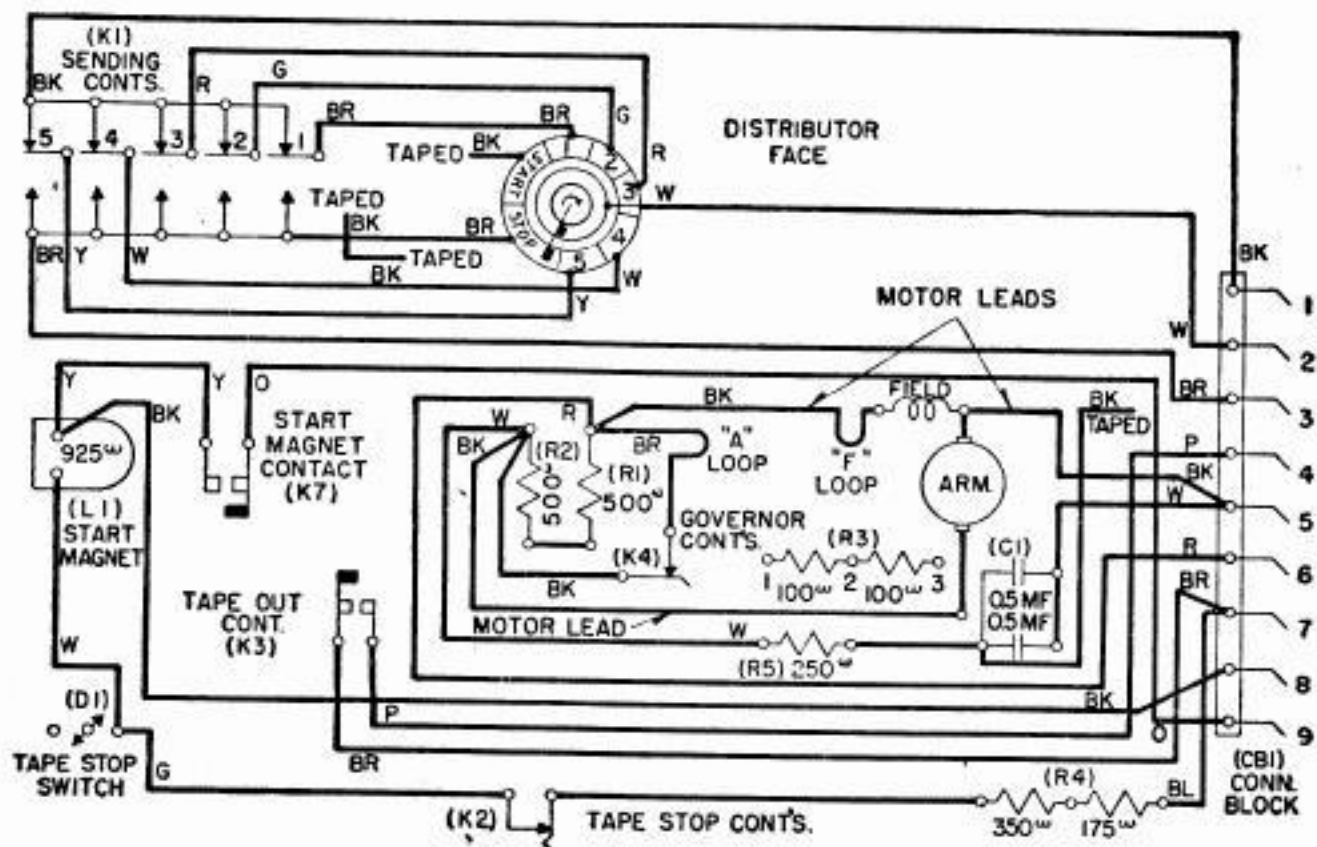


Fig. 8—No. 14 BF and BG Transmitter-Distributors (D-C Shunt Motor)