

BELL SYSTEM PRACTICES
Teletypewriter and Manual
Telegraph Station and P.B.X.
Installation and Maintenance

SECTION P35.468
Issue 1, January, 1936
AT&T Co. Standard

NO. 14 TELETYPEWRITER

INSTALLATION OF CATALOG 87374 (M)

PARTS FOR PUSH FEED MECHANISM

1. GENERAL

1.01 This section furnishes information for the installation of the catalog 87374 (M) Parts to provide the push feed mechanism on No. 14 teletypewriters. The purpose of the push feed mechanism is to provide greater visibility of the typed copy so that it may be read practically up to the printing point.

1.02 In the following paragraphs, an (M) should appear after each catalog number in order to fully designate the part. This (M) has been omitted in all cases, however, in order to simplify and shorten the procedure.

2. PROCEDURE

2.01 Remove the following parts:

- a. The platen assembly after disengaging the return spring from the post and removing the front bearing mounting screws.
- b. The 7656 feed roll lever spring. (Discard the spring.)
- c. The 6930 left tape guide, 6746 screw, 2191 lockwasher and 7002 washer. (Discard the tape guide.)
- d. The 6799 shoulder screw which mounts the feed roll lever, 3598 nut and 2191 lockwasher. (Discard the shoulder screw.)
- e. The ribbon guide after slightly loosening the mounting screws. (Discard the guide.)
- f. The right tape guide, shoulder screw, nut and 2191 lockwasher. (Discard all these parts except the lockwasher.)

- 2.02 Install the new 87381 ribbon guide and tighten the mounting screws.
- 2.03 Remove the 6932 feed roll, 6933 feed roll journal, two 3598 nuts, two 2191 lockwashers and 7002 washer from the 6931 left feed roll lever and assemble these parts on the new 87379 feed roll lever with one 85762 washer furnished between the feed roll lever and the 6932 feed roll as shown in the figure. Discard the old 6931 feed roll lever. The new assembly should be mounted to the platen frame at the right of the platen using the extreme right drilled hole in the rear of the frame and the 87380 bushing, 85762 washer and 82440 screw furnished with the parts and the 2191 lockwasher removed in 2.01 f. (See Fig. 1.)
- 2.04 The 35-88 feed roll lever spring should be hooked between the feed roll lever and the loop or bend in the ribbon guide just above the left mounting screw.
- 2.05 Install the 87378 right tape guide between the 8450 locking toe and the head of the 71659 shoulder screw which replaces the 6800 shoulder screw. No nuts or washers are required.
- 2.06 Reinstall the spring bracket 72018 at the left of the platen frame using the 6746 screw furnished instead of the 6799 shoulder screw removed in 2.01 d. Use the nut and lockwasher removed in 2.01 d.
- 2.07 Install the 87377 left tape guide in place of the 6930 guide using the screw, lockwasher and washer removed in 2.01 c.
- 2.08 Reinstall the platen assembly and hook the carriage return spring in place.

3. INITIAL LUBRICATION

- 3.01 The parts requiring lubrication are the feed roll and feed roll lever at the bearings. A drop of oil should be applied at each of these points.

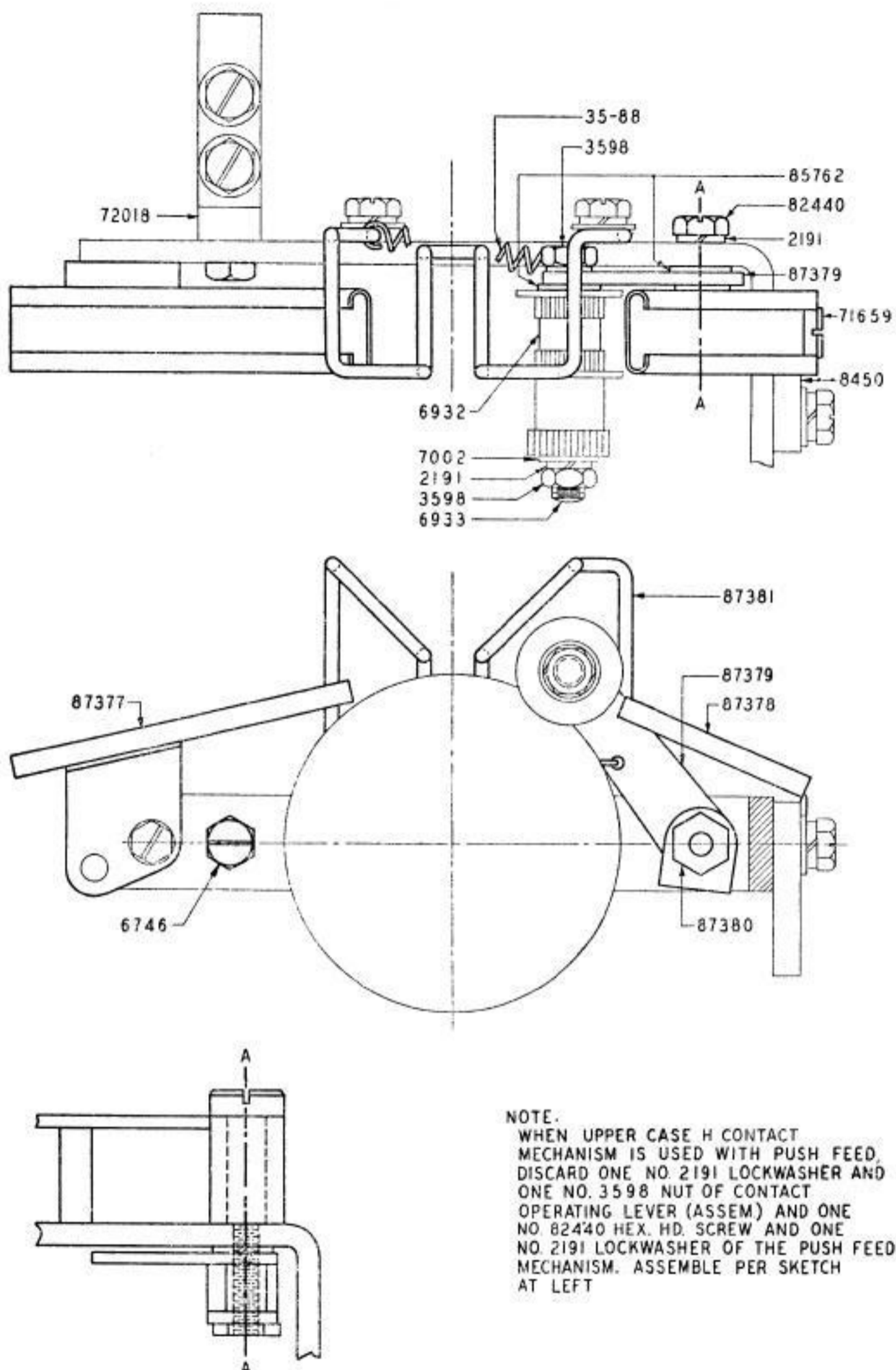


Fig. 1