

BELL SYSTEM PRACTICES
Teletypewriter Stations

SECTION P35.479
Issue 2, September, 1957
AT&TCo Standard

INSTALLATION OF TP106987 MODIFICATION KIT FOR APPLYING THE TAPE-FEEDOUT MAGNET TO THE 14 TYPING REPERFORATOR

1. GENERAL

1.01 This section gives information for the installation of the TP106987 modification kit for applying the tape-feedout magnet to a 14 typing reperforator that is already equipped with a manual tape-feedout lever.

1.02 The section is reissued:

- (a) To revise the list of parts in the TP106987 modification kit.
- (b) To revise Fig. 1 and to add Fig. 2.
- (c) To remove the requirements and procedures formerly in this practice and now incorporated in the section containing the requirements and adjusting procedures for the auxiliary features of the 14 typing reperforator.

Since this is a general revision, the arrows ordinarily used to indicate changes have been omitted.

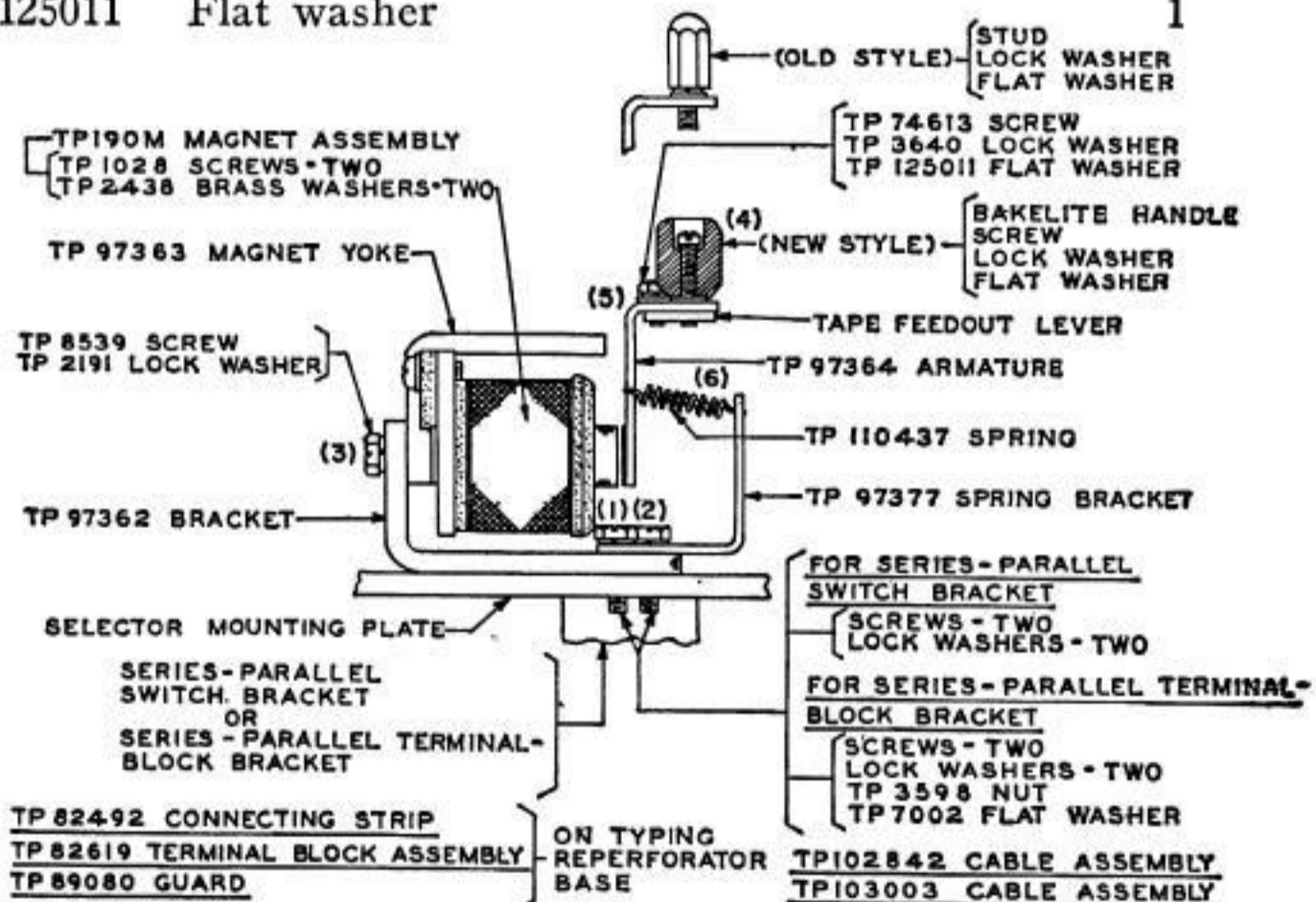
1.03 The TP106987 modification kit provides a means for feeding tape through the typing-reperforator punch-block from a remote location by energizing the tape-feedout magnet. The selector armature of the typing reperforator is held energized during feedout so that the tape which is fed out is punched with LTRS perforations.

2. LIST OF PARTS

2.01 The items listed are included in the TP106987 modification kit. For identification of the parts, see Fig. 1.

Fig. 1

<u>Part No.</u>	<u>Description</u>	<u>Quantity</u>
TP190M	Magnet assembly	1
TP1028	Screw (4-40 x 1/4 Fil)	2
TP2191	Lock washer	1
TP2438	Brass washer	2
TP3598	Nut (6-40)	1
TP3640	Lock washer	1
TP7002	Flat washer	1
TP8539	Screw (6-40 x 1/2 Hex.)	1
TP74613	Screw (4-40 x 1/4 Hex.)	1
TP82492	Connecting strip	1
TP82619	Terminal-block assembly	1
TP89080	Guard	1
TP97362	Magnet bracket	1
TP97363	Magnet yoke	1
TP97364	Armature	1
TP97377	Spring bracket	1
TP102842	Cable assembly	1
TP103003	Cable assembly	1
TP110437	Spring	1
TP125011	Flat washer	1



NOTE 1: PARTS SHOWN WITHOUT TP NUMBERS ARE ALREADY ON THE UNIT. PARTS SHOWN WITH TP NUMBERS ARE INCLUDED IN THE MODIFICATION KIT.

NOTE 2: NUMBERS IN PARENTHESES INDICATE THE SEQUENCE OF INSTALLATION STEPS.

Fig. 1 — TP106987 Modification Kit

3. INSTALLATION OF PARTS ON TYPING-REPERFORATOR UNIT

A. Typing-Reperforator Unit Equipped with a Series-Parallel Switch

3.01 If a typing-reperforator unit is equipped with a selector oil-shield and base, these should be removed and recovered.

3.02 The following steps should be performed in the sequence indicated and as correspondingly numbered and shown in Fig. 1. **Fig. 1**

(1) Remove and retain the two screws and lock washers of the series-parallel switch bracket.

(2) Mount the TP97377 spring bracket and the TP97362 magnet bracket by means of the screws and lock washers removed in (1). The screw in the hole nearest to the magnet coil should be inserted through hole C of the selector plate as shown in Fig. 2. The other screw should be inserted through the mounting hole of the magnet bracket and through hole D of the selector plate as shown in Fig. 2. **Fig. 2**

(3) Assemble the TP97363 magnet yoke and the TP190M magnet assembly on the TP97362 magnet bracket by means of the TP8539 screw and the TP2191 lock washer.

(4) Install the TP97364 armature on the tape-feedout lever, using the bakelite handle and the screw, washer, and lock washer in the larger of the two mounting holes in the new-style lever; or the stud, washer, and lock washer in the corresponding mounting hole in the old-style lever.

(5) Use the TP74613 screw, TP3640 lock washer, and TP125011 flat washer in the other mounting hole in the lever.

(6) Place the TP110437 spring as shown in Fig. 1. **Fig. 1**

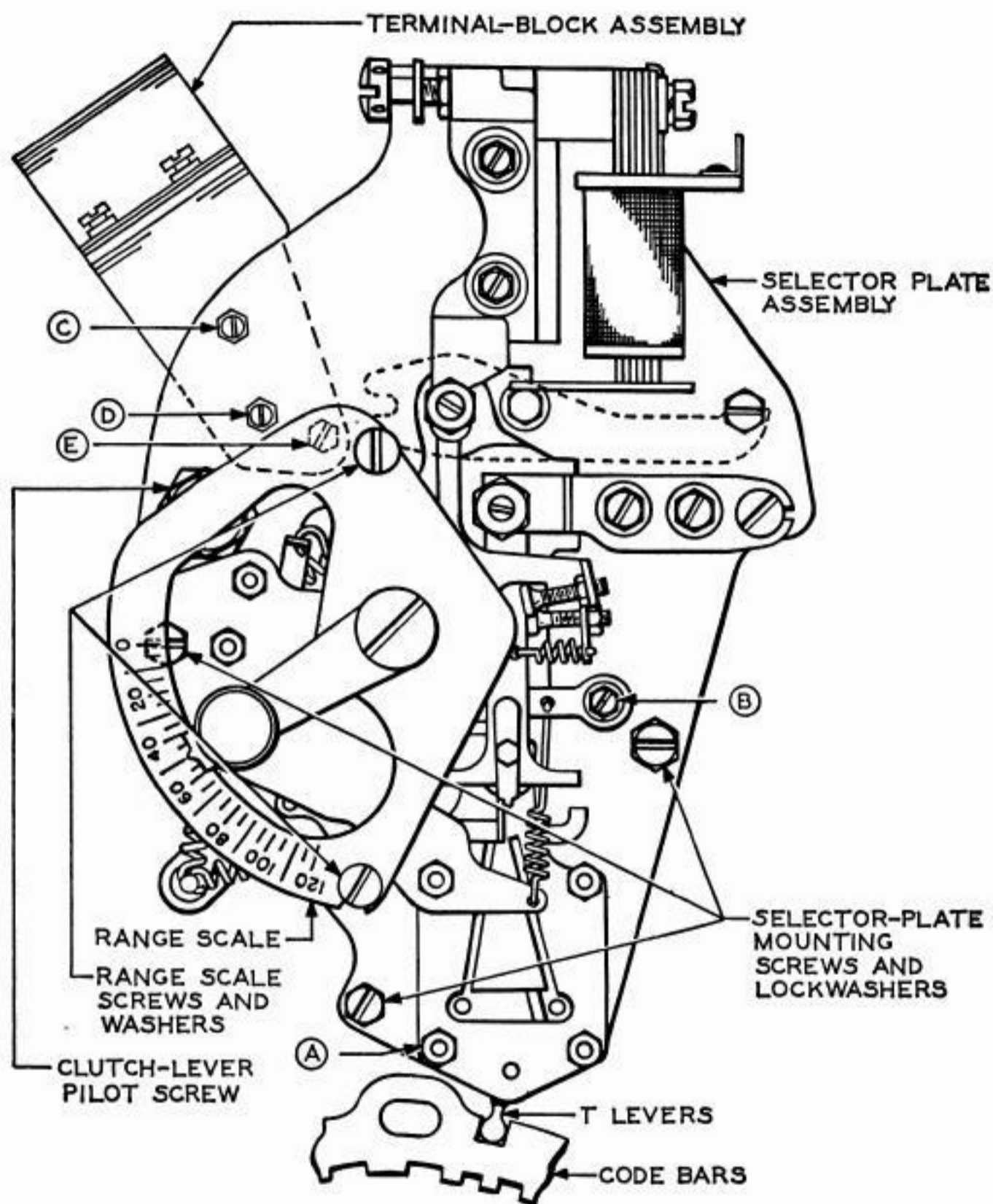


Fig. 2 — Layout of Holes

B. Typing-Reperforator Unit Equipped with a Series-Parallel Terminal-Block Assembly

3.03 The installation of the parts is the same as in 3.01 and 3.02 with the following exception for mounting the TP97362 magnet bracket and the TP97377 spring bracket.

Fig. 1

(1) Remove and retain the two mounting screws and lock washers from the holes designated D and E in Fig. 2. **Fig. 2**

(2) Position the TP97377 spring bracket on top of the mounting bracket as shown in Fig. 1. Insert the mounting screws removed in (1) into the mounting holes of the brackets and holes C and D of the selector plate as shown in Fig. 2. The screw in the hole of the bracket nearest to the magnet coil should be associated with hole C. Fasten the screw in hole C by means of the lock washer and the TP3598 nut. Fasten the screw in hole D by means of the TP7002 flat washer and the lock washer. **Figs. 1 and 2**

4. INSTALLATION OF TERMINAL BLOCK, CONNECTING STRIP, CABLING, AND GUARD

Terminal Block

4.01 If the typing-reperforator base is equipped with a terminal-block assembly having only six terminals, replace this terminal-block assembly by the TP82619 terminal-block assembly, which also has six terminals, and transfer all of the existing connections to corresponding positions on the TP82619 assembly. Retain the old terminal block assembly for recovery.

TP102842 Cable

4.02 Run the TP102842 cable assembly on the typing reperforator between the TP190M magnet and the TP82619 terminal-block assembly and stitch the end of the cable carrying the two terminals to the bottom of the vertical portion of the TP97362 magnet bracket, leaving a sufficient length of wire to reach the screw terminals on the TP190M magnet assembly. Bring the cable down behind and under the selector mounting plate. Form and stitch the cable to the existing wires running from the TP190M magnet assembly to the TP82619 terminal-block assembly, making sure that the form does not interfere with any moving parts.

4.03 Connect the cable in accordance with the wiring diagram in the Bell System Practice for the 14 typing-reperforator base. This includes soldering the tinned end of the Y (yellow) wire of the TP102842 cable assembly to terminal 17 on the TP82619 terminal-block assembly and the BR (brown) wire to terminal 18 and connecting the others ends of these wires to the TP190M magnet assembly by means of the TP1028 fillister-head screws and the TP2438 brass washers.

Connecting Strip

4.04 If the typing-reperforator base is equipped with a connecting strip having only six connection clips, the base should be modified to provide connection clips 17 and 18. To do this without breaking any soldered connections, remove the six connection clips from the old connecting strip and discard the connecting strip. Mount these six connection clips on the TP82492 connecting strip in the same order in which they were previously mounted on the discarded connecting strip, and then install the TP82492 connecting strip on the typing-reperforator base.

TP103003 Cable

4.05 Connect the Y (yellow) wire of the TP103003 cable from connection clip 17 to terminal 35 and the BL (blue) wire from connection clip 18 to terminal 43, in accordance with the wiring diagram in the Bell System Practice showing wiring for the 14 typing-reperforator base. Stitch the end of the TP103003 cable carrying the two terminals to the existing wiring at the RM1 and TS3 terminals, and if possible, follow the existing wiring down under the top of the base and up behind the connection clips. Otherwise, run the TP103003 cable to the rear clip-connector mounting post and bring it around in back of the connectors to the front of the base.

Guard

4.06 Install the TP89080 guard on the front end of the relay bracket, using the front mounting screw of the relay bracket. Make sure that the offset on the guard extends downward.

5. BSP REFERENCES

5.01 The following Bell System Practices provide additional information which may be required for use with this practice.

<u>Subject</u>	<u>Section</u>
Cleaning	P30.010
Lubrication	P35.604
Preparation of Apparatus for Installation	P33.014
Requirements and Procedures:	
14 Typing Reperforator, Auxiliary Features	P35.653
General Requirements	P30.012
Tools and Maintenance Supplies	P30.301
Wiring Diagram	P35.301