

Garden City

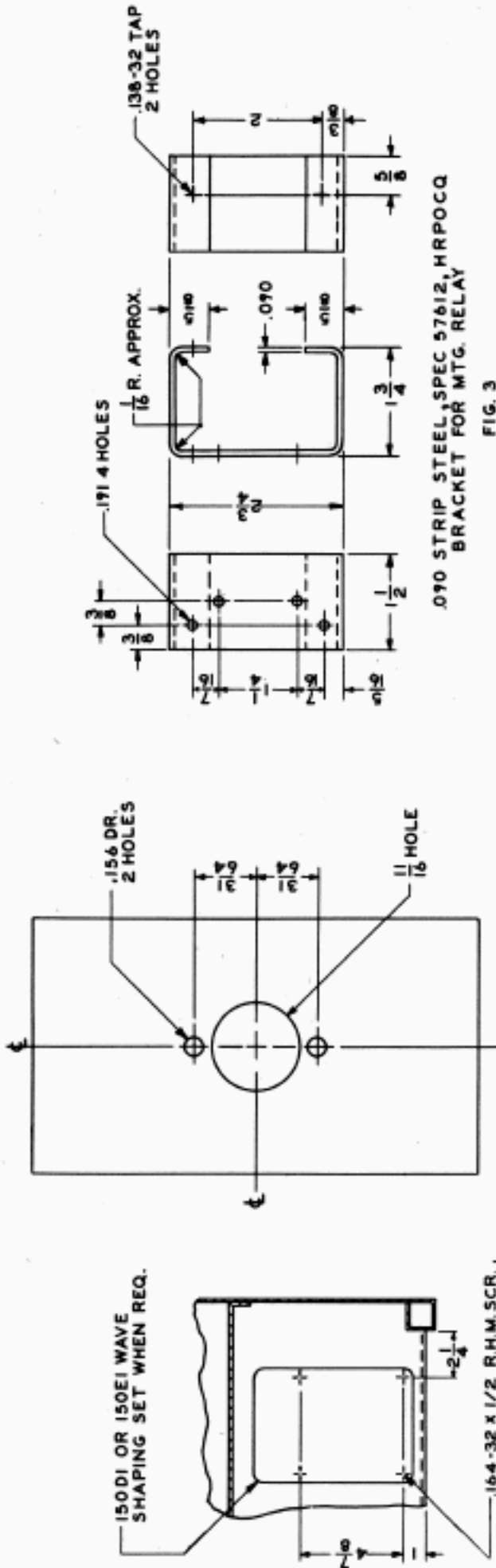


FIG. 2
MODIFICATION OF METAL PLATE
(FURNISHED WITH TABLE)
TO DRILL FOR KS-8585, L12
PLUG
SEE FIG. 2

FIG. 3
.070 STRIP STEEL, SPEC 57612, HRPOCQ
BRACKET FOR MTG. RELAY

KS-8585, L12 PLUG MTD. WITH
WASHER & HEX. NUT
SEE FIG. 2

KS-14229, L 2 RELAY, FOR A-C POWER OR
KS-14230, L 2 RELAY, FOR D-C POWER
MTD. WITH
.164-32 X 1/2 R.H.M.SCR.,
HEAVY L.W. & HEX. NUT
SEE NOTES 1 & 2

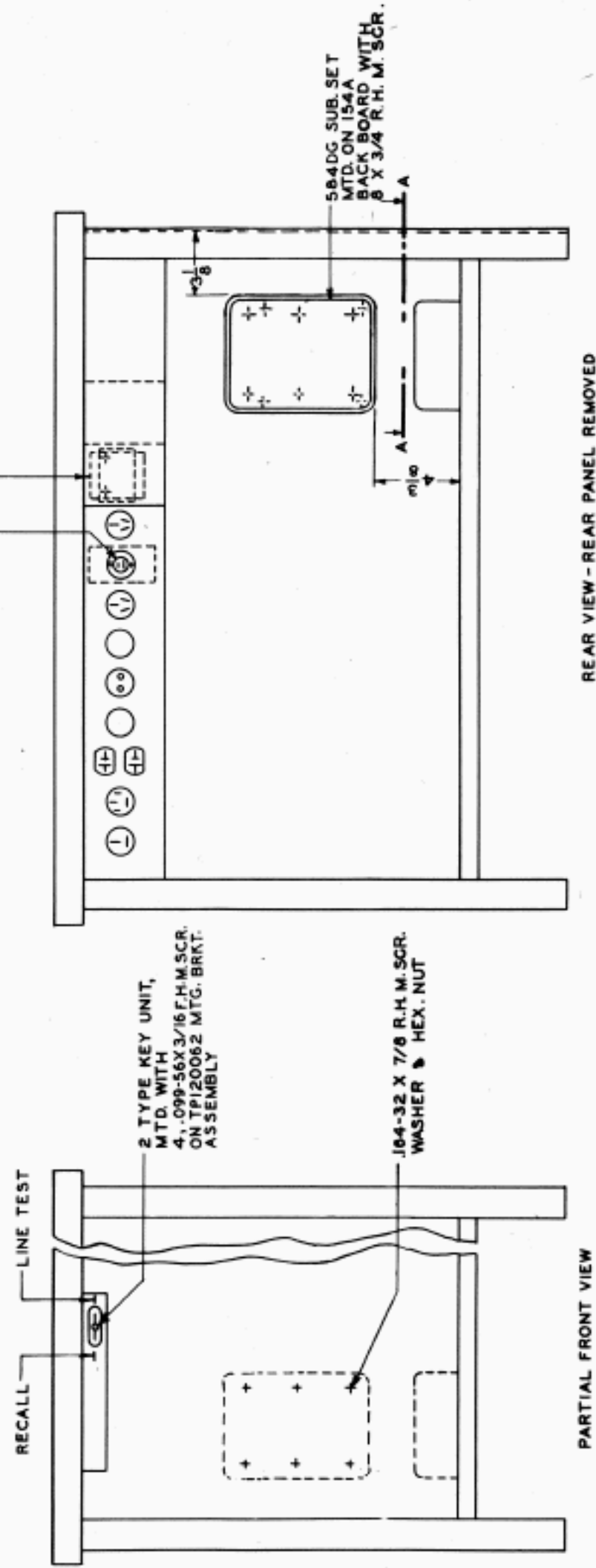


FIG. 1
REAR VIEW - REAR PANEL REMOVED

NOTES:
1. THE KS-14230 RELAY CAN BE OBTAINED BY MODIFYING A WARD LEONARD K-42220 RELAY. THE MODIFICATION CONSISTS OF DISCARDING THE HOUSING AND MOUNTING THE RELAY ON A BRACKET PER FIG. 3; THE BRACKET TO BE PROVIDED LOCALLY.
2. THE KS-14229 RELAY CAN BE OBTAINED BY MODIFYING A WARD LEONARD KS-42219 RELAY. THE MODIFICATION CONSISTS OF DISCARDING THE HOUSING AND MOUNTING THE RELAY ON A BRACKET PER FIG. 3; THE BRACKET TO BE PROVIDED LOCALLY.

ATTENDED TWX SERVICE
STATION ASSEMBLY
XRT205 OR XRT206 TTY TABLE