

FIG. 1  
 DRILLING OF TABLE  
 FOR TRANSMITTER DISTRIBUTOR  
 MOUNTING PLATE  
 (Fasten plate by means of #10-32 x 1"  
 F.H.M. Scr (P-160974)(4 req.)  
 (See Note 2)  
 #10-32 Hex. Nuts (P125918)(4 req.)  
 Lock Washers (P285080)(4 req.)

Holes marked A (4) are for 14A Mtg. Plates  
 Holes marked C (3) are for 14C Mtg. Plates

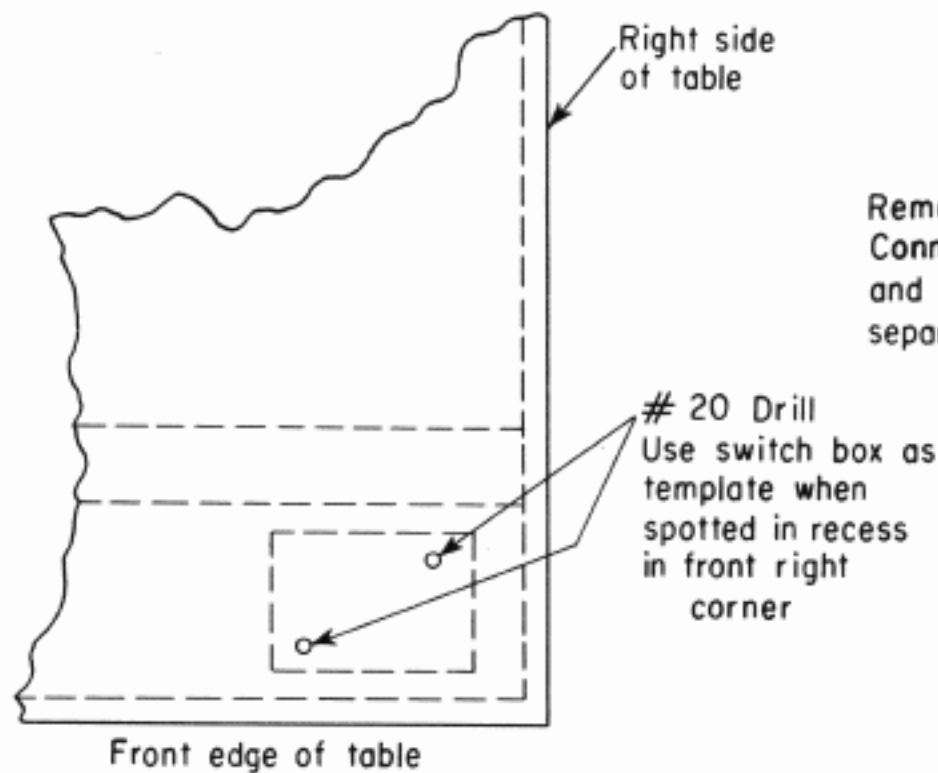
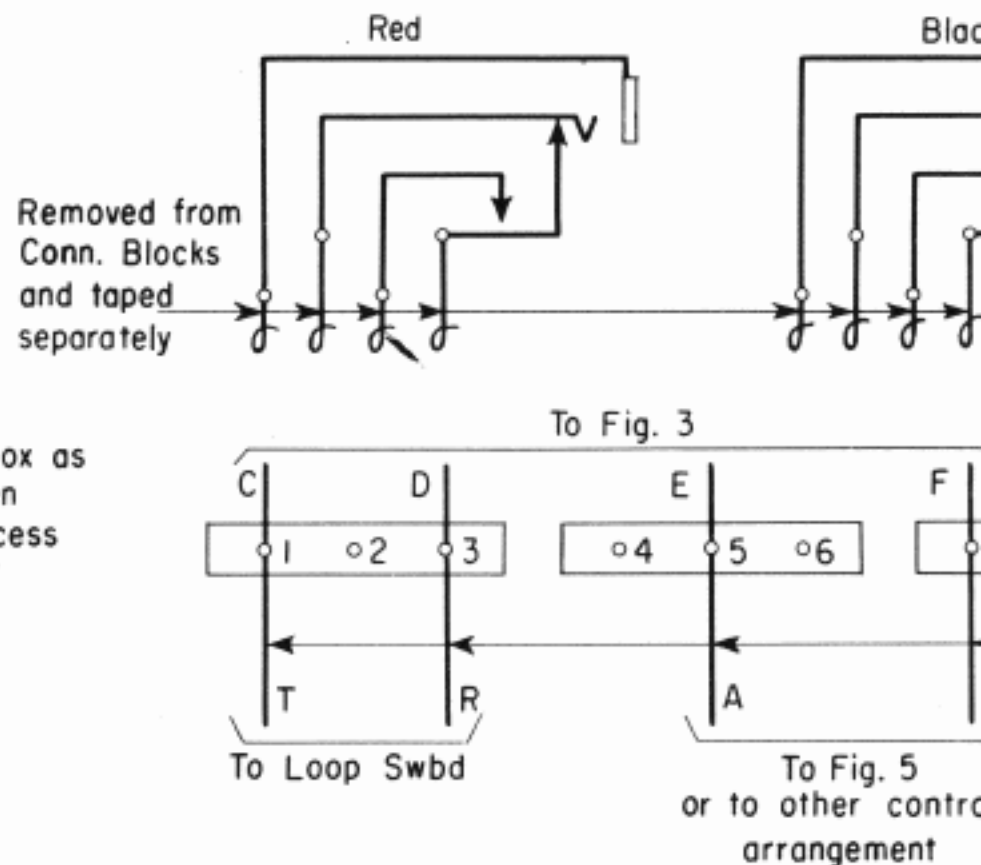


FIG. 2  
 DRILLING OF TABLE  
 FOR POWER SWITCH  
 (Fasten Switch by means of #6-32 x 5/16"  
 Binding Head Mach. Scr. (P146320)(2 req.)

(See Note 4)  
 #6-32 Hex. Nuts (P125952)(2 req.)  
 Lock Washer (P230916)(2 req.)



WIR  
 ELECTRI  
 AND LOOP, CON

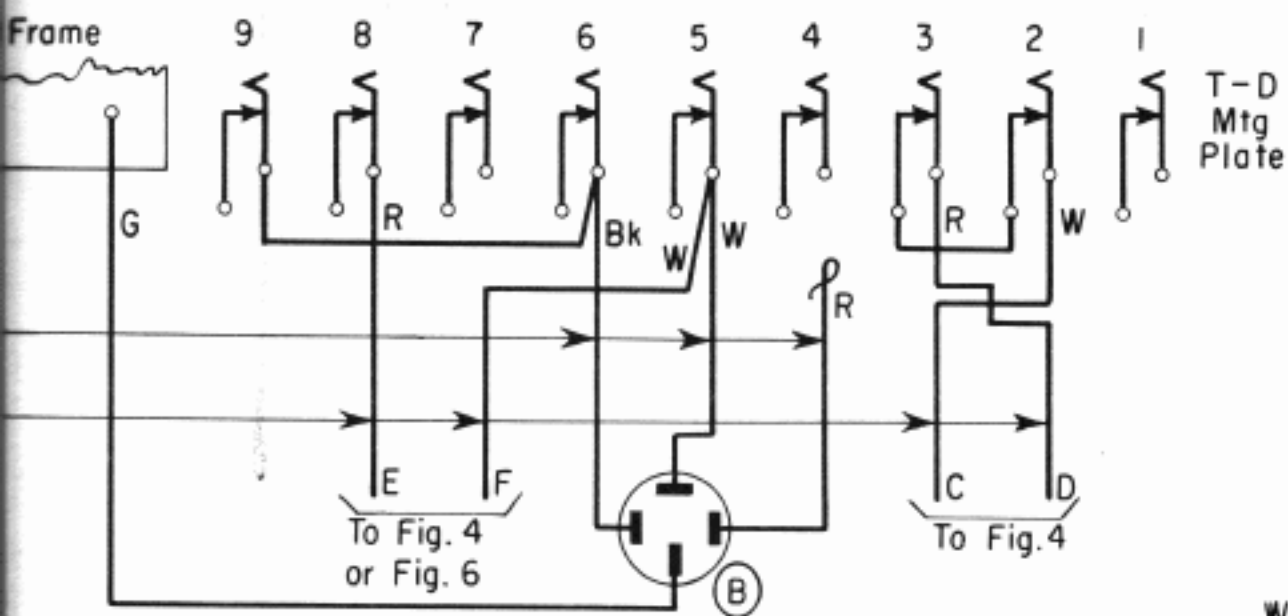
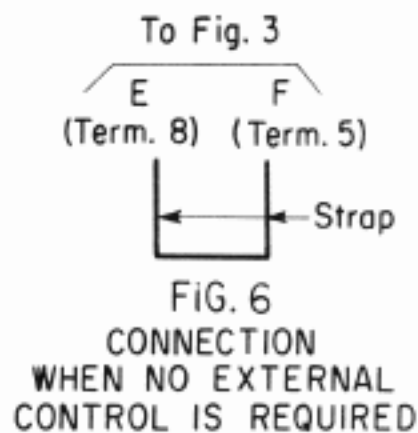


FIG. 3  
LOOP, CONTROL POWER CONNECTIONS  
ELECTRICAL SERVICE ASSEMBLY



NOTES

- 1 If Trans.-Dist. is located center line will be 9" from center line will be 4 1/2" If Trans.-Dist. is to be center line will be 13 1/2"
- 2 Retain pad normally provided
- 3 Fig. 5 is representative, control desired, such as key, relay circuit, etc.
- 4 Trumbull Tumbler starter H & H type NF Line starter General-The arrangement appropriate changes, commencing mounting equipment.

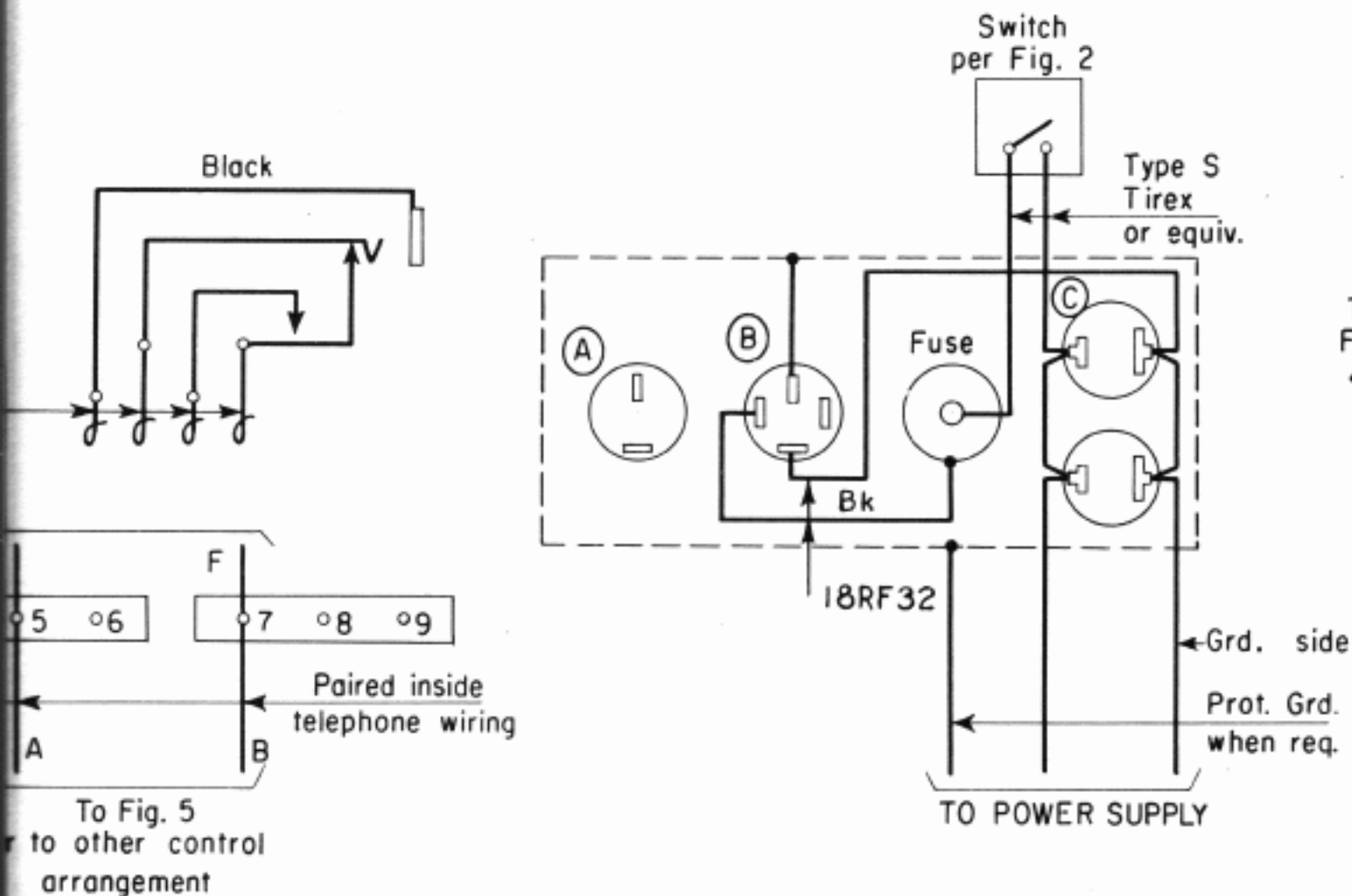


FIG. 4  
WIRING OF TP 126287  
ELECTRICAL SERVICE ASSEMBLY  
AND LOOP, CONTROL AND POWER CONNECTIONS

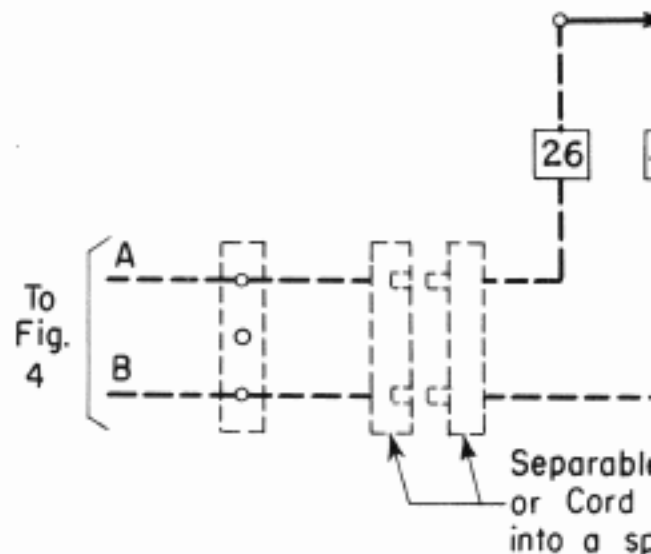
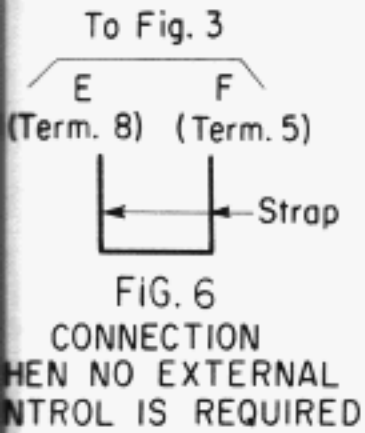


FIG. 5  
TELETYPEWRITER OR OTHER  
TRANS.-DIST. CONTROL  
(Shown for No. 15 TTY)  
(Note 3)

NOTES

- 1 If Trans.-Dist. is located centrally on table, center line will be 9" from left edge of table.  
If Trans.-Dist. is to be on left side of table, center line will be 4 1/2" from left edge of table.  
If Trans.-Dist. is to be on right side of table, center line will be 13 1/2" from left edge of table.
- 2 Retain pad normally provided with table.
- 3 Fig. 5 is representative, could use any other control desired, such as a manually operated key, relay circuit, etc.
- 4 Trumbull Tumbler starter switch # 2228 or H & H type NF Line starting switch # 6808 and General - The arrangements shown here on, with appropriate changes, can be applied to other mounting equipment.



- 2 - #112 Hubbell Cord Grips
- 1 - Clamp, Cable #7 (Spec. AT6933)
- 1 - P-205653 R.H.M. Scr. (.164-32 x 1/2)
- 1 - P-206518 Hex. Nut (.164-32)
- 1 - P-221761 Lock Washer
- 1 - M4K Cord (2'6")
- 1 - M2DG Cord (2'6")
- 1 - 14C Mounting Plate
- 1 - Fusetron T3.2A
- 1 - KS7993 Cord (10')
- 2 - P-230916 Lock Washers
- 2 - P-125952 #6-32 Hex. Nuts
- 2 - P-146320 #6-32 x 5/16 B.H.M. Screw
- 4 - P-160853 #8-32 x 1 R.H.M. Screw
- 4 - P-206518 #8-32 Hex. Nuts
- 4 - P-221761 Lock Washers

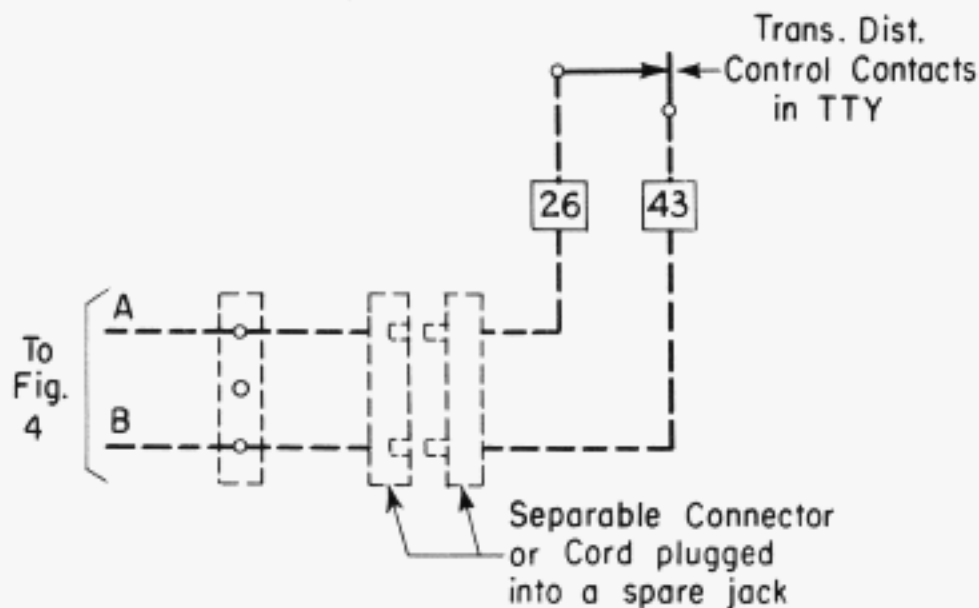


FIG. 5  
TELETYPEWRITER OR OTHER  
TRANS.-DIST. CONTROL  
(Shown for No. 15 TTY)  
(Note 3)

TELETYPEWRITER SYSTEMS  
NOS 14 & 20 TRANS. DIST. ON XRT 200 TABLE  
POWER AND START MAGNET CONTROL  
MODIFICATION OF TABLE