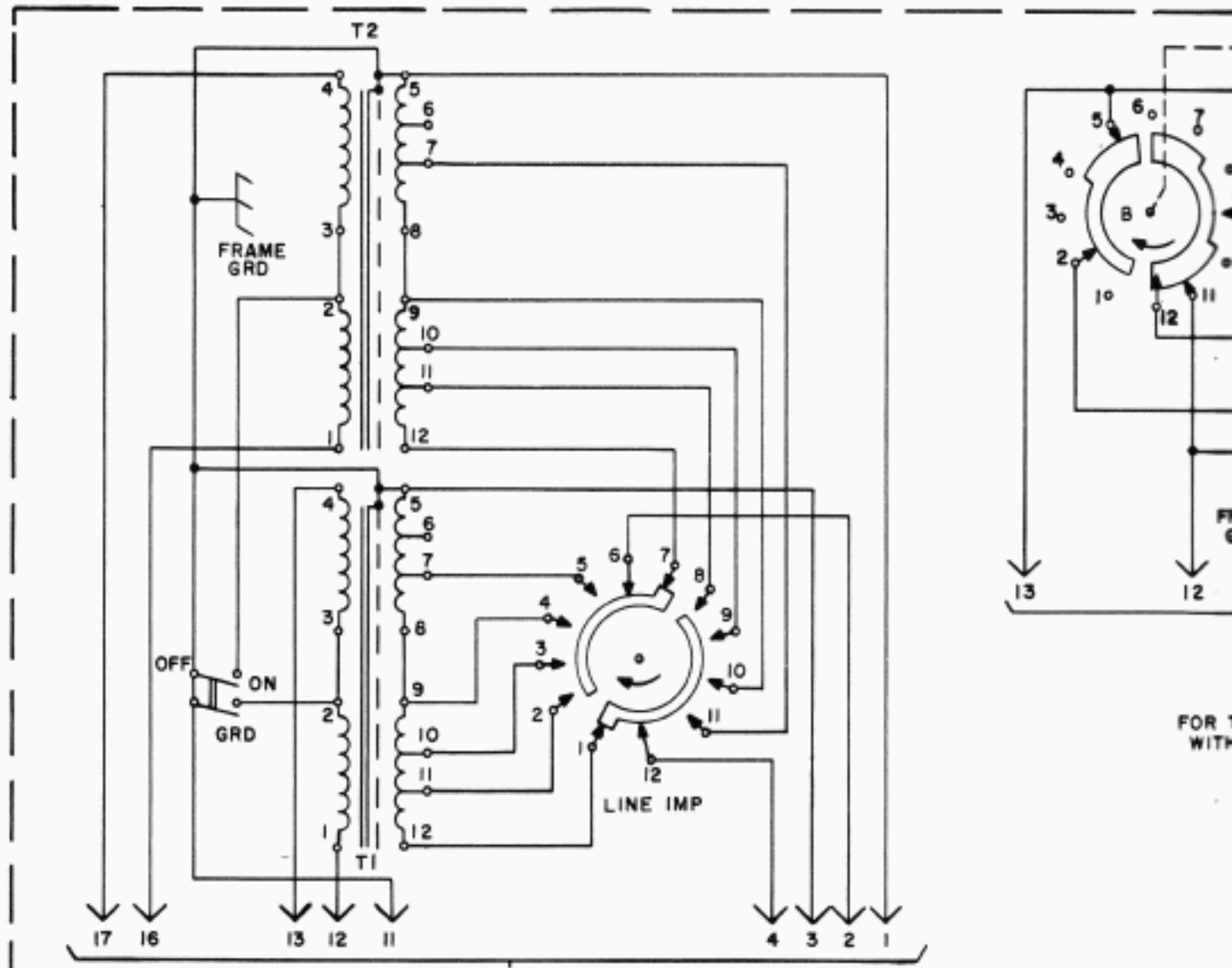
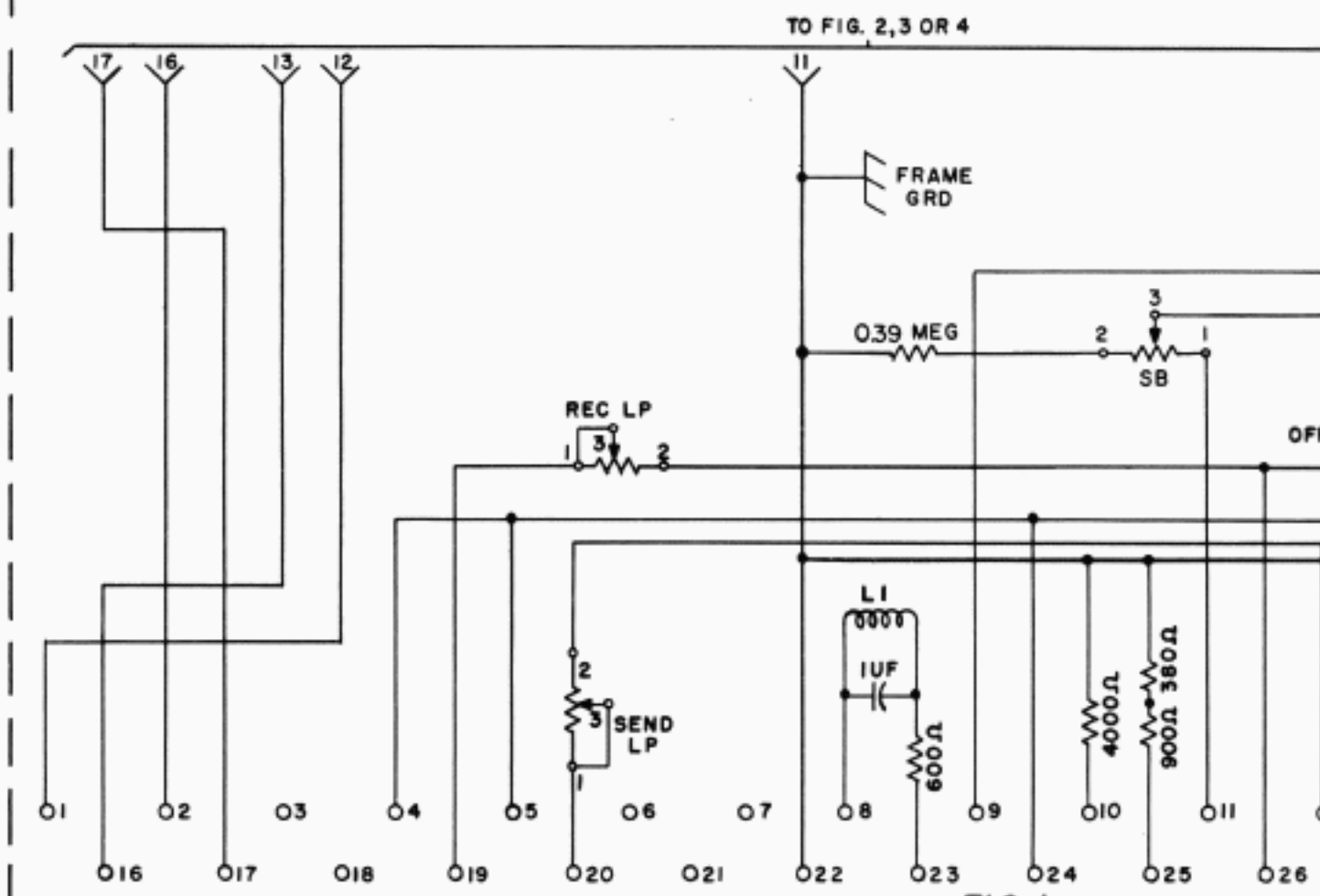


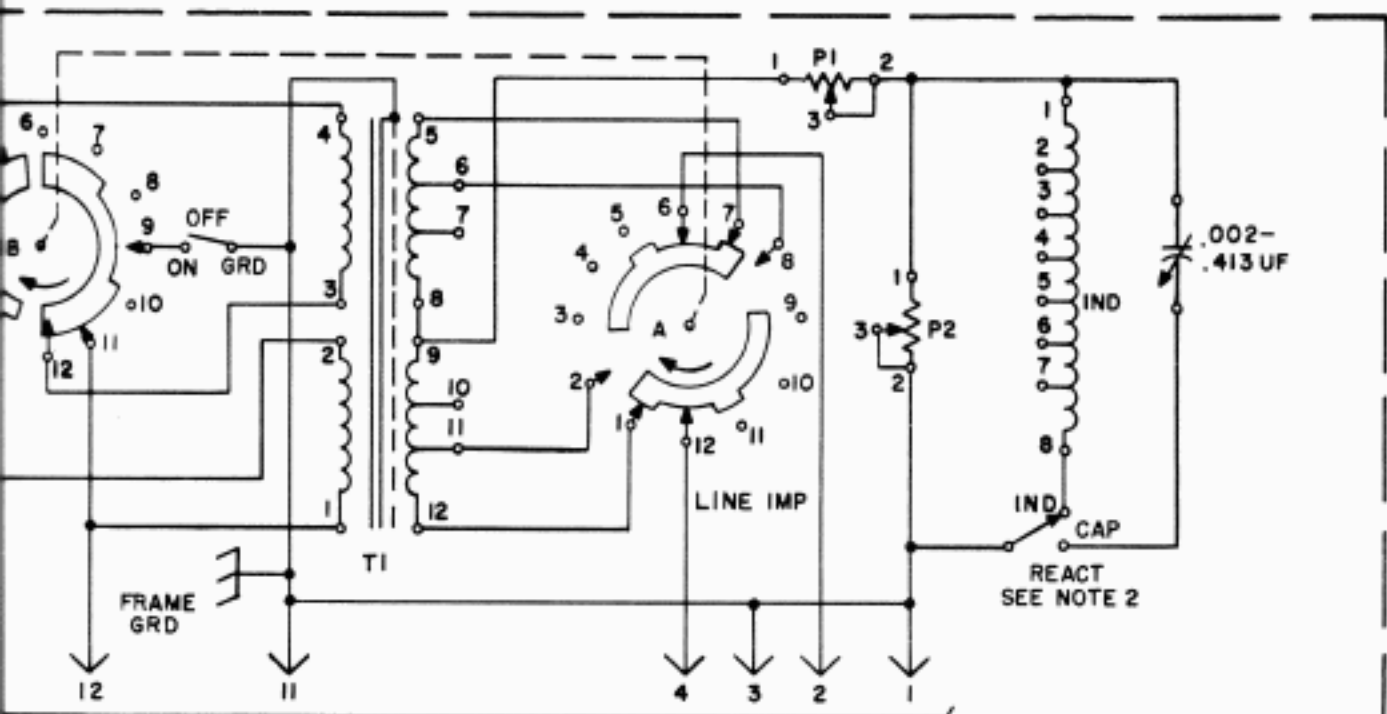
STATION IDENTIFICATION



TO FIG. 1  
**FIG. 4**  
 FOR FOUR WIRE OPERATION



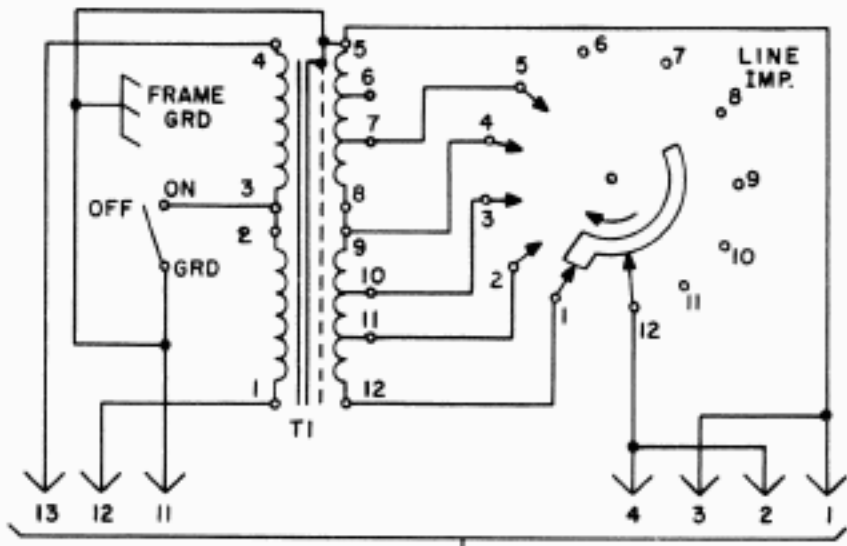
**FIG. 1**  
 130B2 TTY SUB. SET - COMMON EQUIPMENT



TO FIG. 1

**FIG. 3**

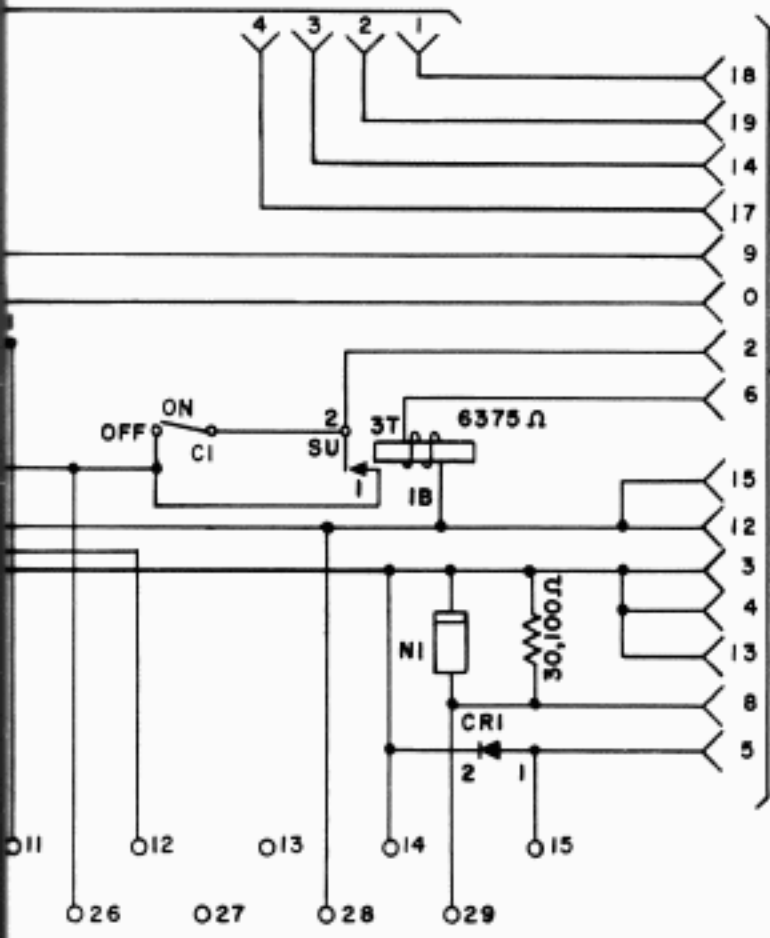
FOR TWO WIRE OPERATION WITH HYBRID BALANCE



TO FIG. 1

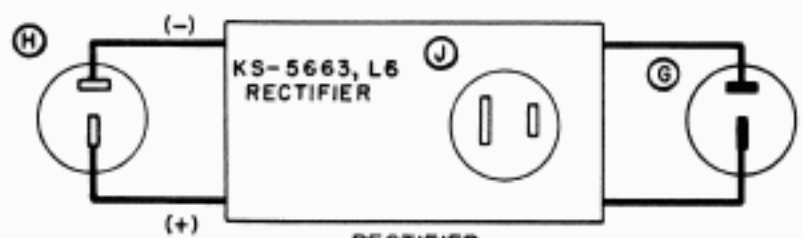
**FIG. 2**

FOR TWO WIRE OPERATION WITHOUT HYBRID BALANCE



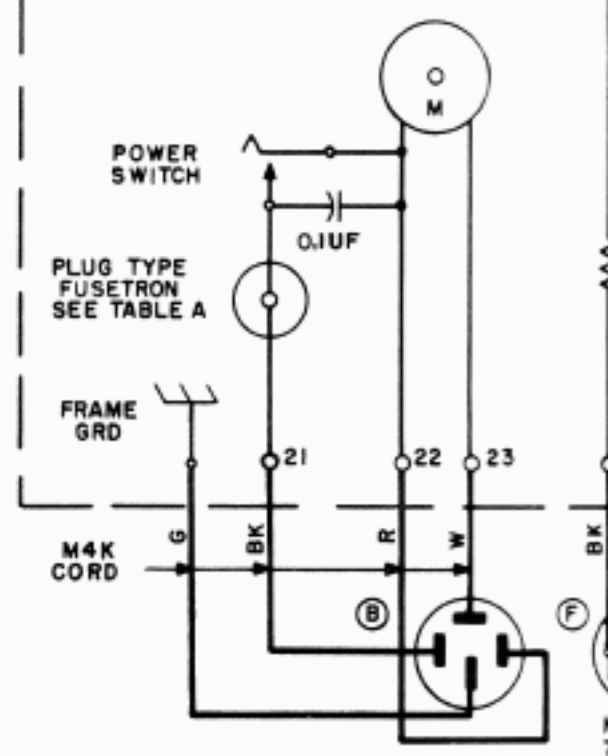
PLUG CONNECTS TO 43A1 CARRIER CHANNEL TERMINAL

130B2 TTY SUB SET

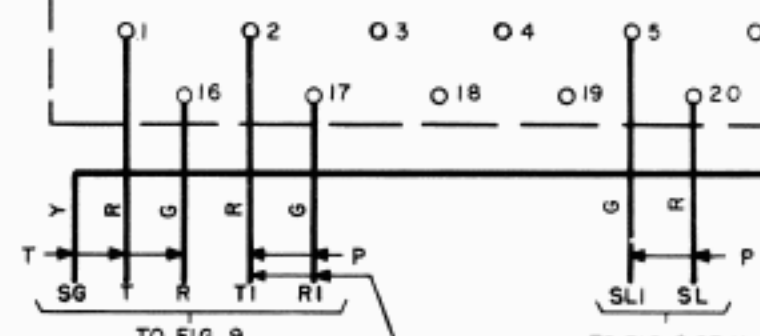


**RECTIFIER FIG. 6**

- 15 TTY CONSISTING OF
  - 15C BASE
  - 15U, 15W, 15Y OR 15AA
  - TYPING UNIT
  - 15P, 15J, 15L OR 15M
  - MOTOR UNIT
  - 15A, 15C, 15G OR 15H
  - SETS OF GEARS
  - 15D OR 15E KEYBOARD
  - TP 112549 SET OF LINE-TEST KEY PARTS WHEN REQ
- FOR SEND REC TTY ONLY



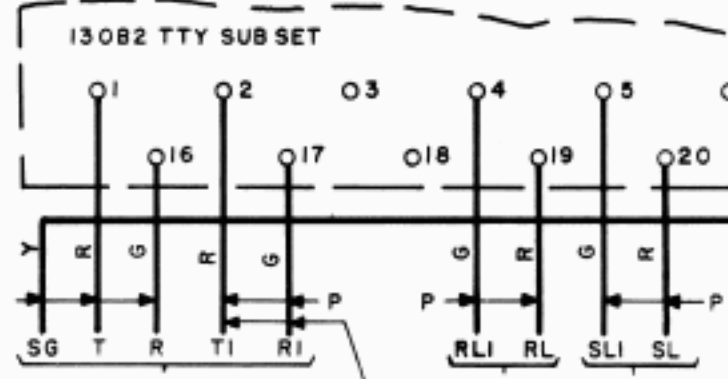
130B2 TTY SUB SET



TO FIG. 9

REQ FOR FOUR WIRE OPERATION ONLY

TO FIG. 9 OR 11 THRU LOOP SWBD WHEN REQ



TO FIG. 9

REQ FOR FOUR WIRE OPERATION ONLY

TO FIG. 9 FOR RECEIVING TTY THRU LOOP SWBD WHEN REQ

TO FIG. 9 FOR SENDING TTY THRU LOOP SWBD WHEN REQ

FI SUB HXD-20

DF  
5AA  
5M  
5H  
DARD  
LINE-TEST  
N REQ

FOR SEND REC  
TTY ONLY

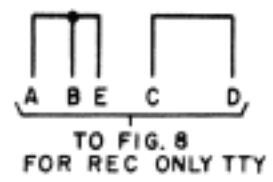
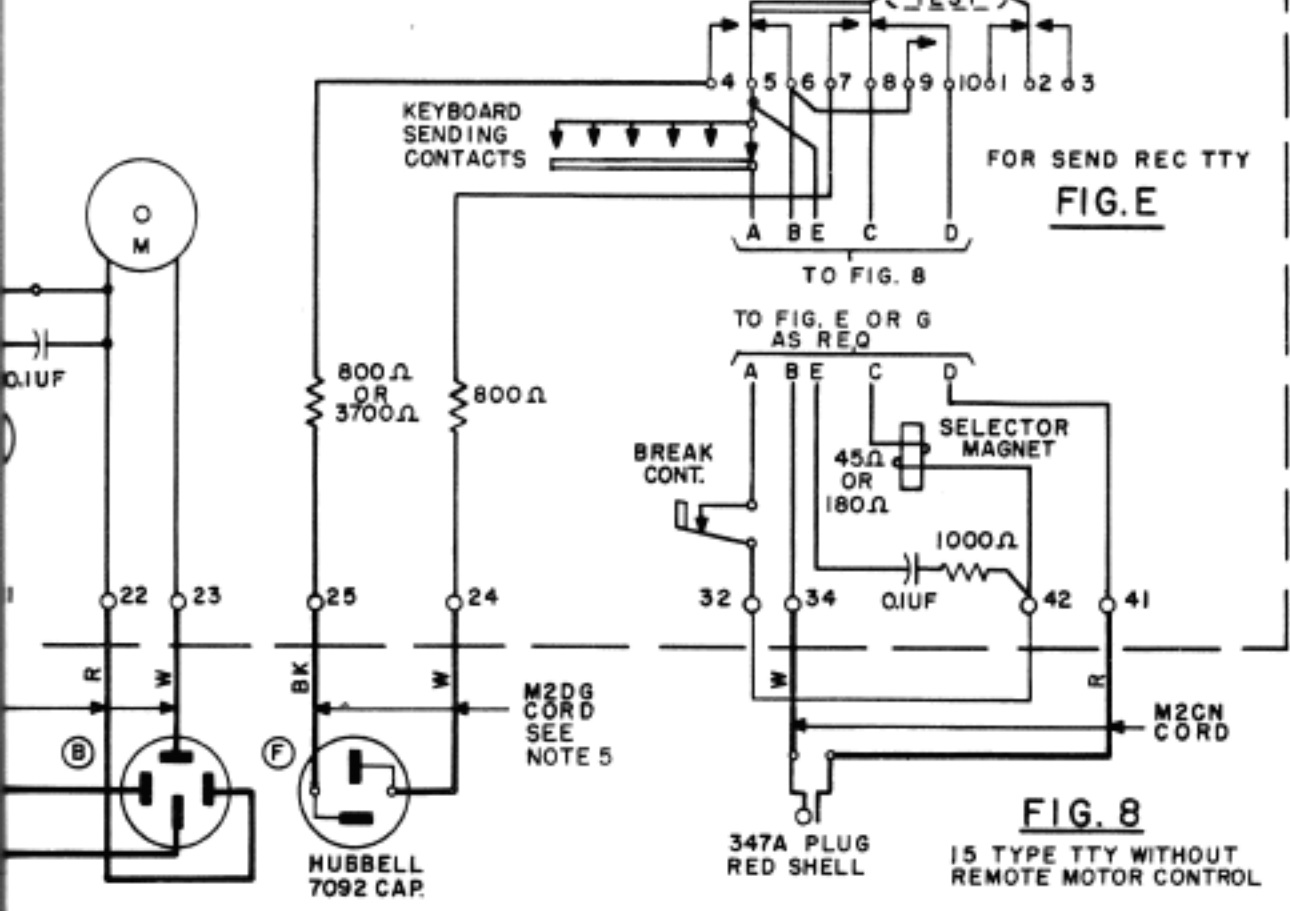


FIG. 6



15 TTY CONSISTING OF  
15C BASE  
15D OR 15E KEYBOARD  
(SEND-REC TTY ONLY)  
15U, 15W, 15Y OR 15AA TYPING UNIT  
15P, 15J, 15L OR 15M MOTOR UNIT  
15A, 15C, 15G OR 15H SET OF GEARS  
TP96892 SET OF UPPER CASE "M"  
MOTOR CONTROL PARTS  
TP112549 SET OF LINE-TEST KEY  
PARTS (SEND-REC TTY ONLY)

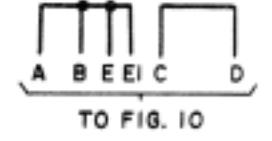
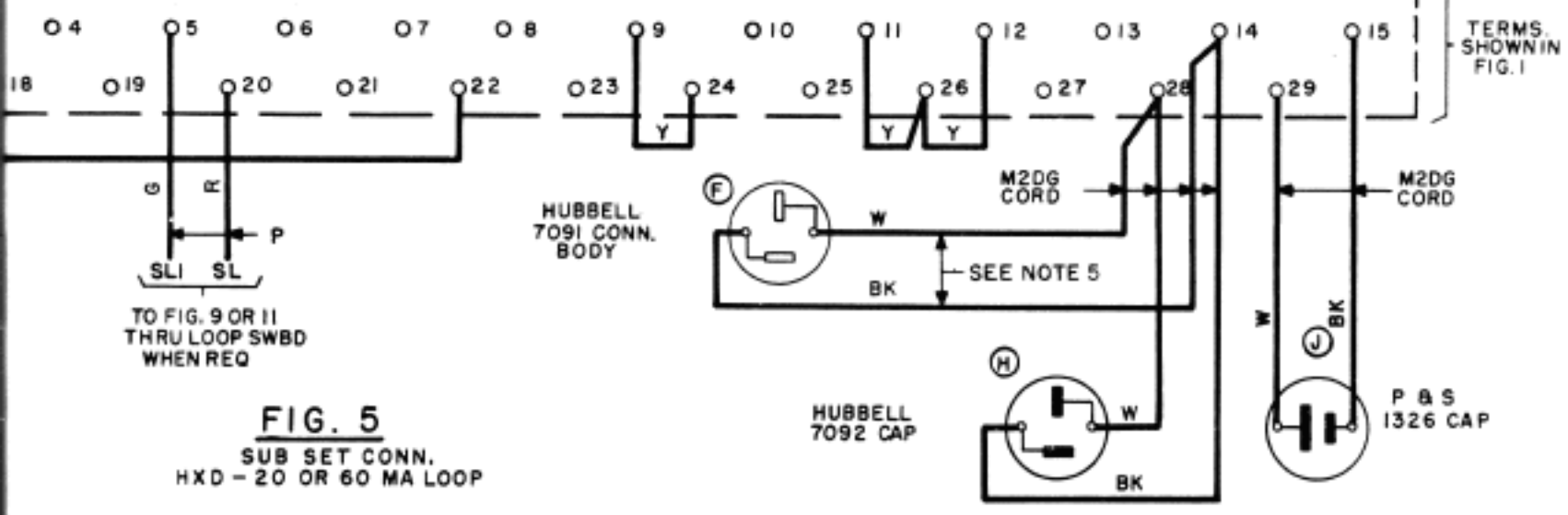
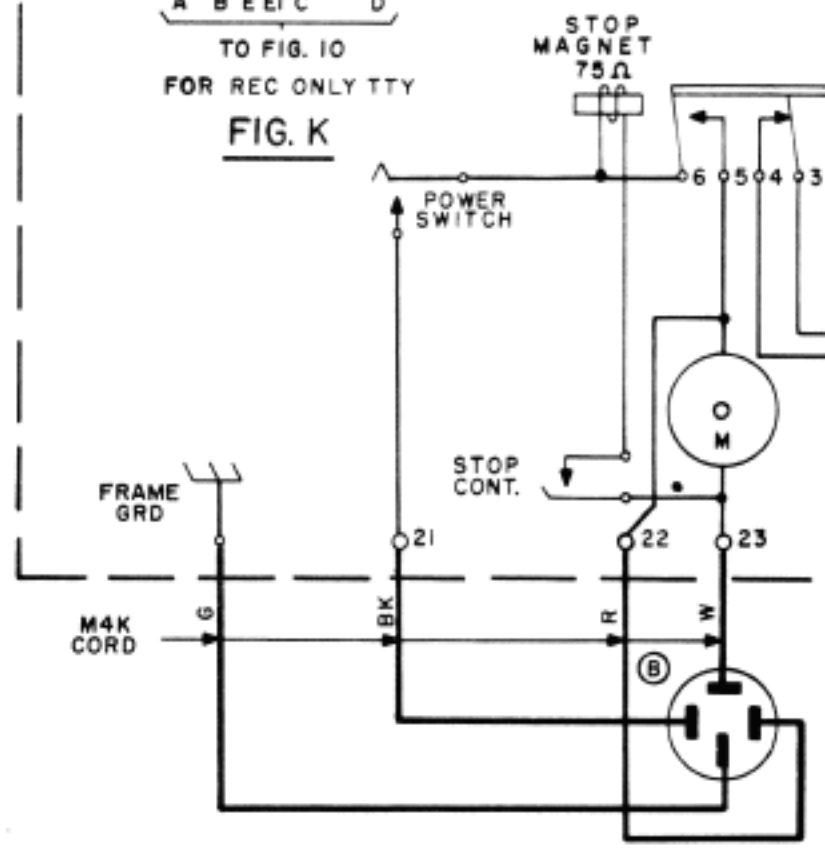
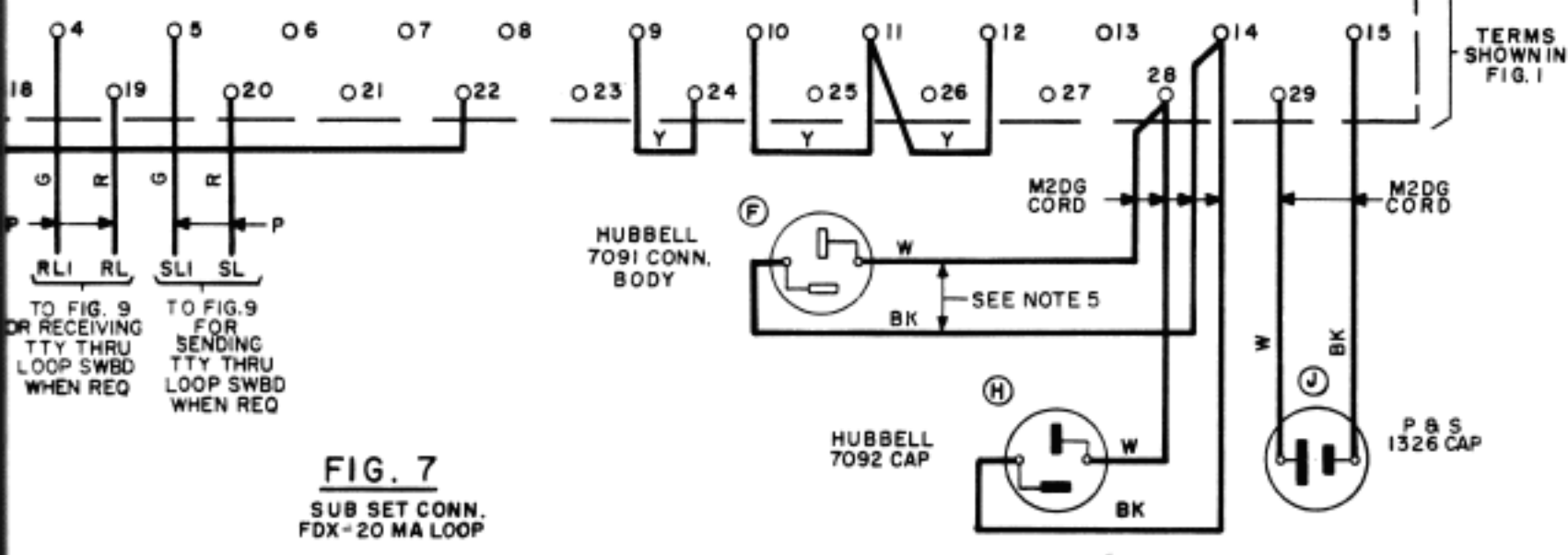
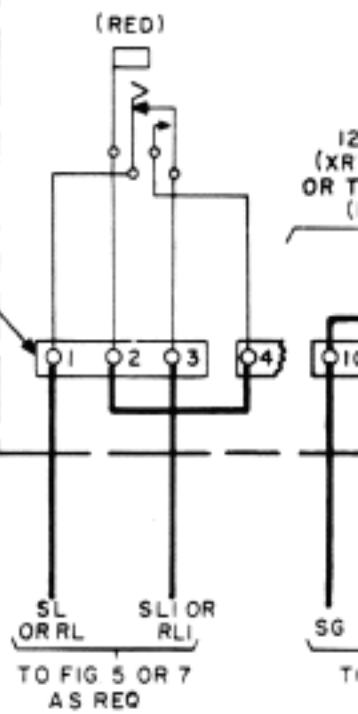
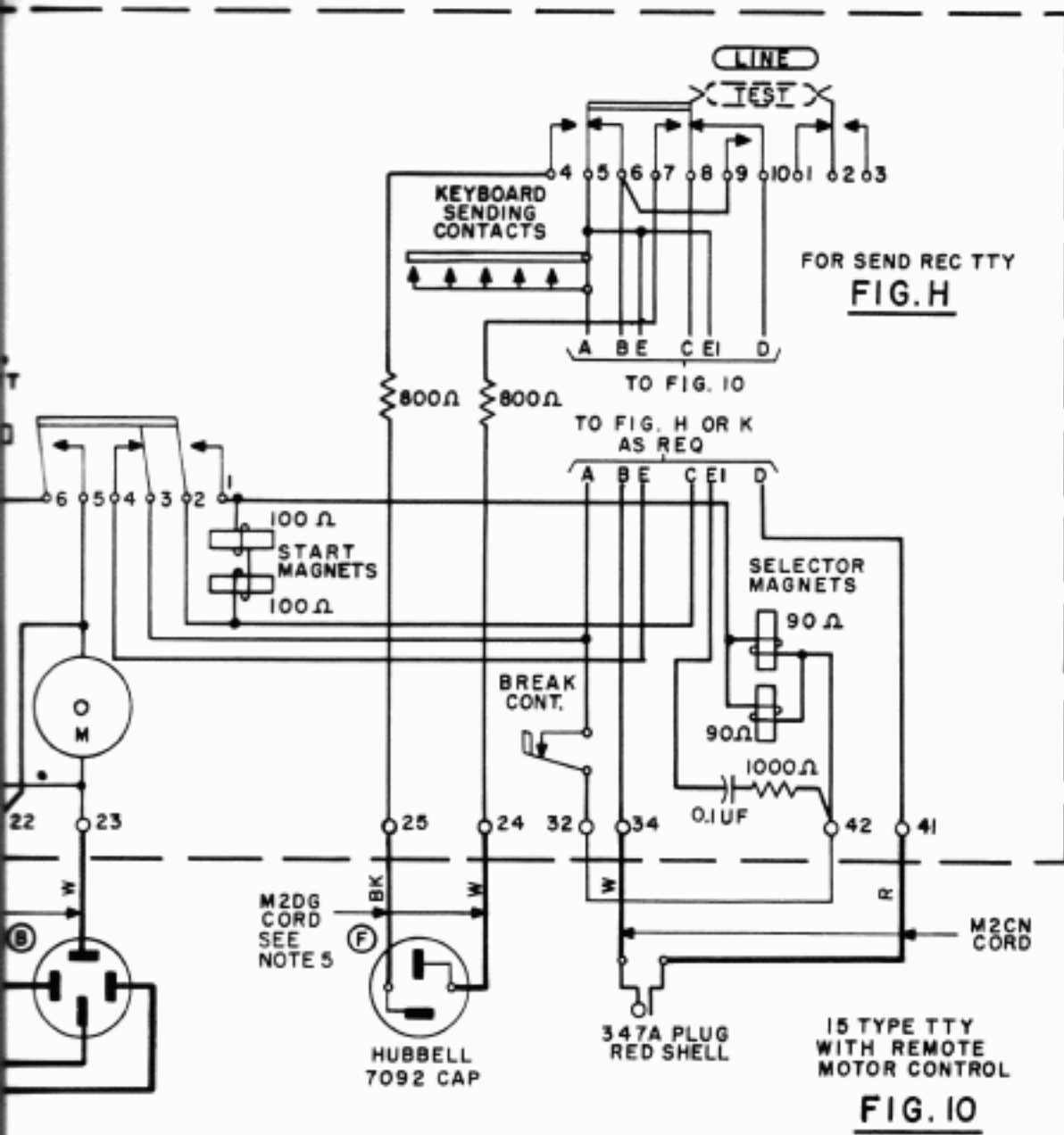


FIG. 10



15N TTY TABLE OR  
TP 126287 ELECTRICAL  
SERVICE ASSEMBLY  
IN XRT 200 OR XRT 201  
TTY TABLE





15N TTY TABLE OR  
 TP126287 ELECTRICAL  
 SERVICE ASSEMBLY  
 IN XRT 200 OR XRT  
 TTY TABLE

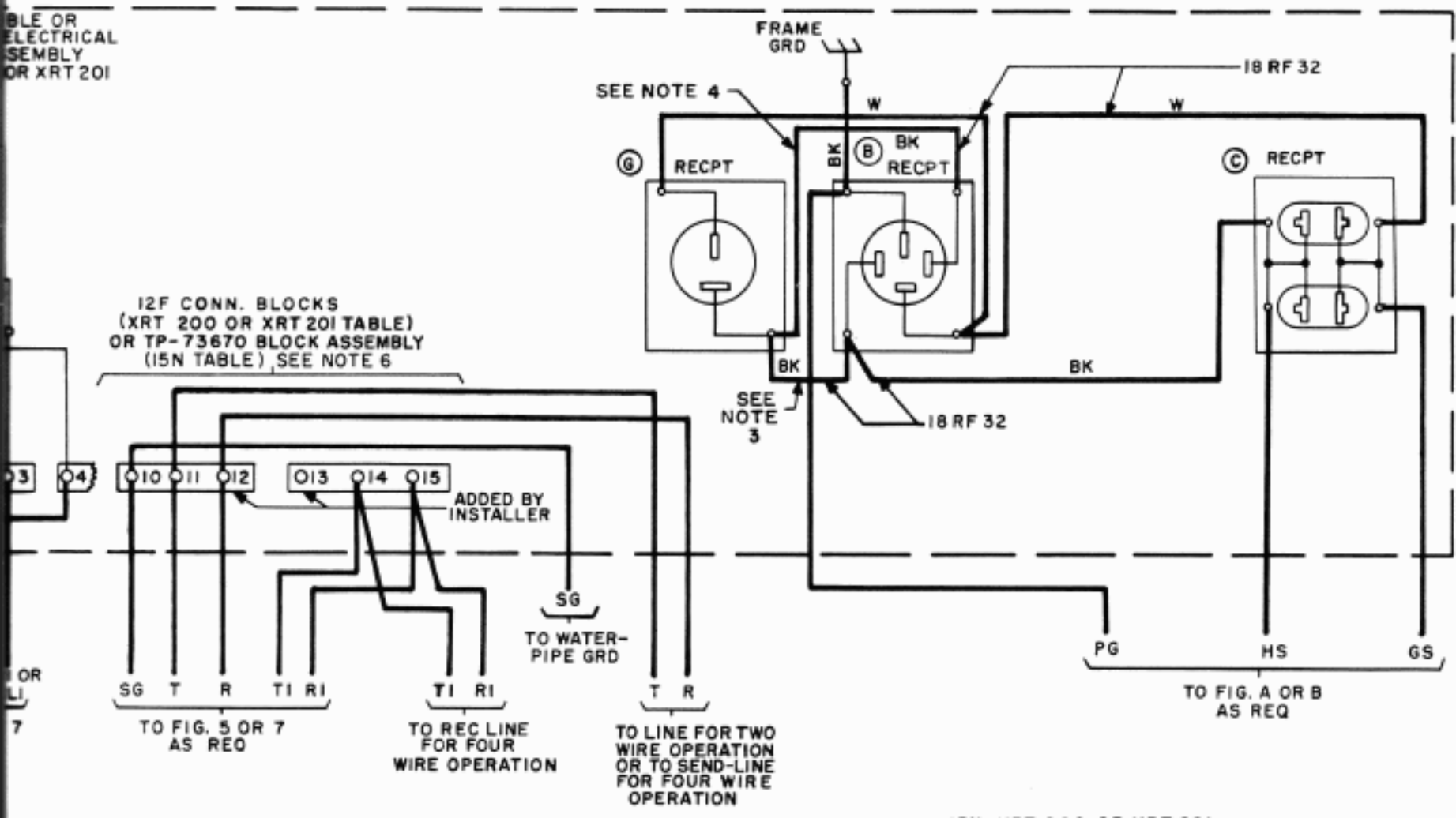
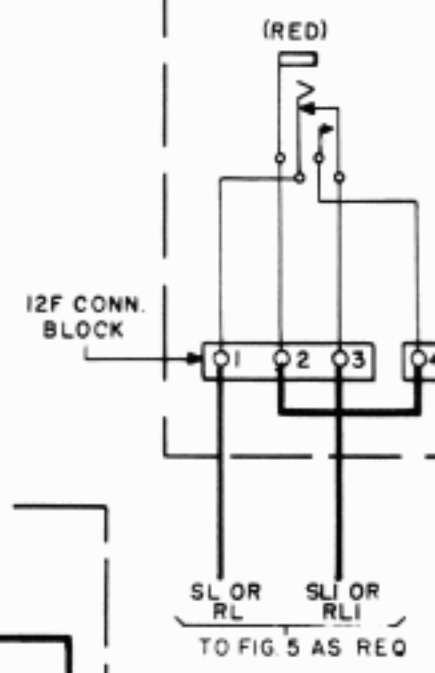
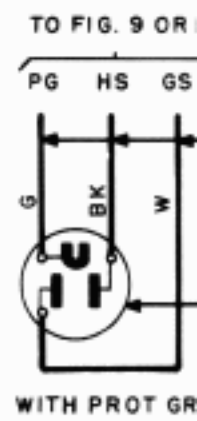


TABLE OR  
 ELECTRICAL  
 ASSEMBLY  
 FOR XRT 201



NOTES:

1. UNLESS OTHERWISE SPECIFIED ALL COLORED LEADS SHALL BE 22GA. BROWN, TYPE GS STATION WIRE PER AT & T CO SPEC 7089.
2. ADJUSTMENT OF THESE REACTANCES IS DESCRIBED IN THE BSP.
3. THIS STRAP SHALL ONLY BE PROVIDED WHERE 130V RECTIFIER FOR THE 130B2 SUB SET IS NOT TO BE UNDER THE CONTROL OF THE TELETYPEWRITER POWER SWITCH
4. THIS STRAP SHALL ONLY BE PROVIDED WHERE THE 130V RECTIFIER FOR THE 130B2 SUB SET IS TO BE UNDER THE CONTROL OF THE TELETYPEWRITER POWER SWITCH
5. REQUIRED ONLY WHEN LOCAL TEST FEATURE IS FURNISHED.
6. FOR FULL DUPLEX OPERATION MOUNT THE 130B2 SET AND THE ADDED CONNECTING BLOCKS ON THE TABLE OF THE SEND-RECEIVE TTY.

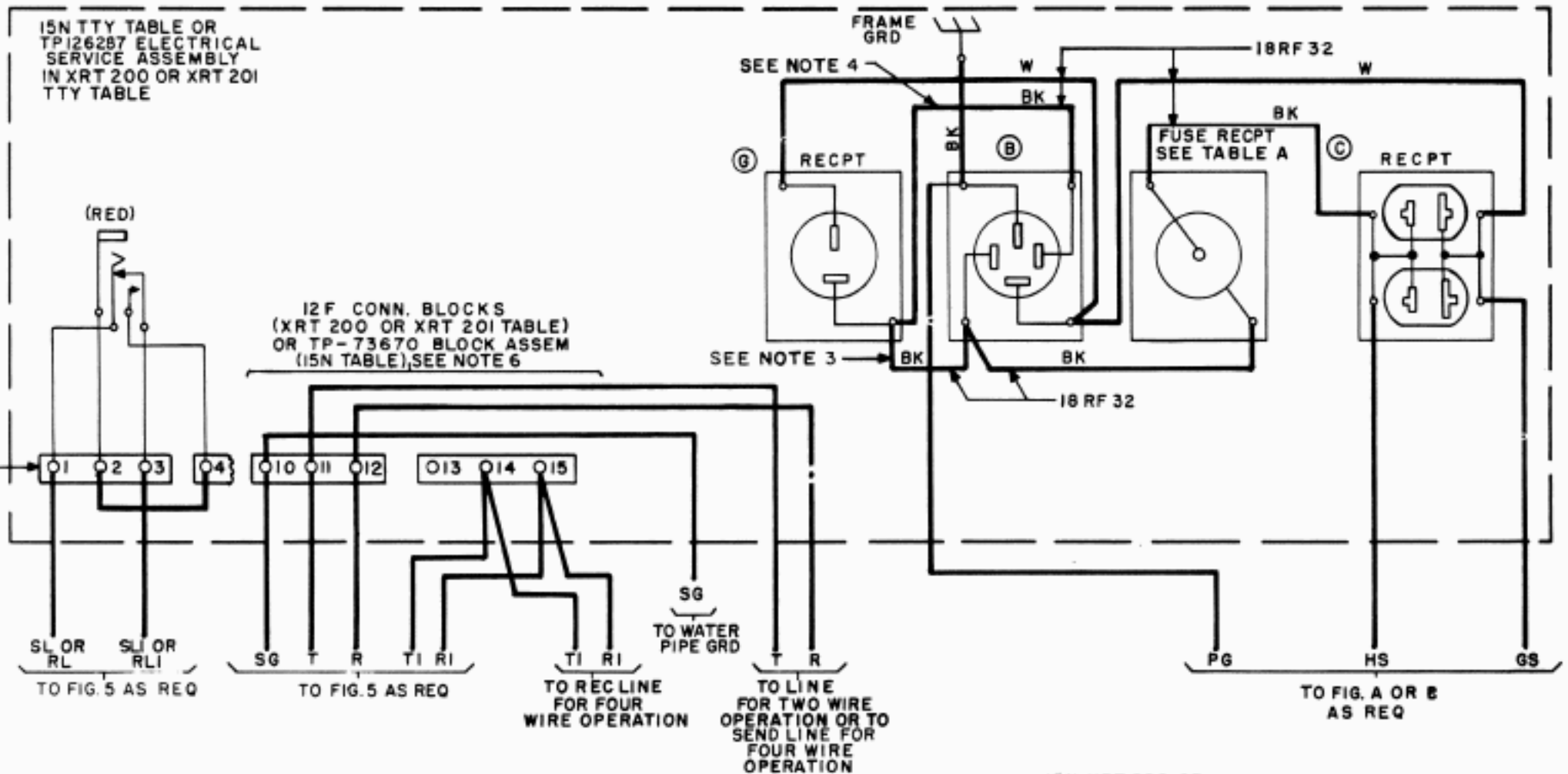
MOTOR	FUSETRON
A-C SYNCH	T 3.2
A-C SER.	T 1.6

TABLE A

"M" PLANS USED	
M2.06*	M2.49*
M2.23	M2.52*
M2.29B*	
M2.44*	

TABLE B

\* WHEN REQUIRED

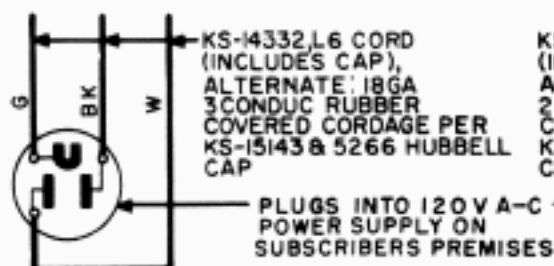


15N XRT 200 OR  
XRT 201 TTY TABLE  
REMOTE MOTOR CONTROL  
IN TTY

FIG. 11

TO FIG. 9 OR 11

PG HS GS

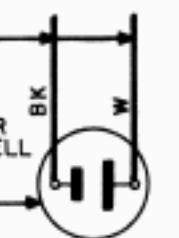


WITH PROT GRD

FIG. A

TO FIG. 9 OR 11

HS GS



WITHOUT PROT GRD

FIG. B

TTY STATION WIRING  
130B2 TTY SUB SET  
PRIVATE LINE SERVICE  
15 TTY & 15N, XRT200,  
OR XRT201 TABLE