

BELL SYSTEM PRACTICES
Teletypewriter and Data Stations

SECTION P34.513
Issue 1, March, 1963
AT&TCo Standard

28E AND 28H-TYPE TRANSMITTER-DISTRIBUTOR UNITS LUBRICATION

CONTENTS	PAR. NO.
1. GENERAL	1.01-1.04
2. PARTS TO BE LUBRICATED	2.01-2.18
A. Transmitter-Distributor Unit	2.01-2.16
B. Auxiliary Features	2.17-2.18
3. ASSOCIATED BELL SYSTEM PRACTICES ...	3.01

1. GENERAL

1.01 This section provides the lubrication procedures for the maintenance of the 28E and 28H-type transmitter-distributor units.

1.02 Lubrication of the apparatus before it is placed in service should be governed by the principles given in the section covering preparation of teletypewriter apparatus for installation. After that, because of varying conditions at each station, the apparatus should be lubricated as often as specified by local instructions. The following lubrication intervals are suggested as a guide for use under normal operating conditions.

<u>Operating Speed</u> <u>(Words per Minute)</u>	<u>Lubrication Interval</u> <u>(Whichever Occurs First)</u>
60	3000 Hours or 1 Year
75	2400 Hours or 9 Months
100	1500 Hours or 6 Months

1.03 The lubricants to be used and their methods of application are those specified in the section covering general lubrication of teletypewriter apparatus. The lubrication symbols used herein are the same as those given in that section except

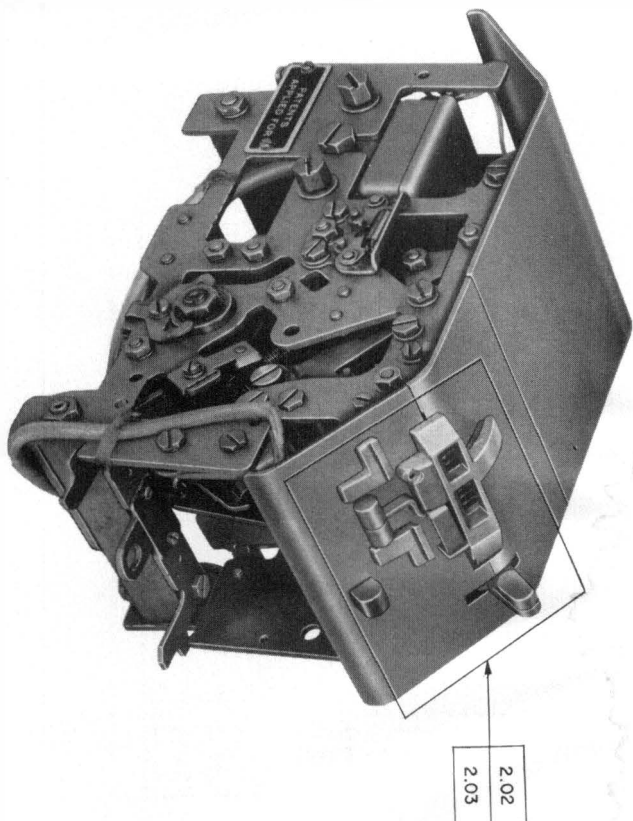
that the symbol 0 which, according to the general lubrication section, indicates one or two drops of oil, is used in this section to mean only one drop of oil. Symbols, such as 02, 03, or 06, are used herein to specify that two, three, or six drops, respectively, are to be applied at the points indicated.

1.04 The photographs in this section show the paragraph numbers referring to particular line drawings of mechanisms and the location of the mechanisms on the unit. Parts in the line drawings are shown in an upright position unless otherwise indicated. If it is difficult to lubricate a part in the upright position, the apparatus should be turned to a position in which the part is more accessible.

2. PARTS TO BE LUBRICATED

A. Transmitter-Distributor Unit

2.01 Tape-guide Plate

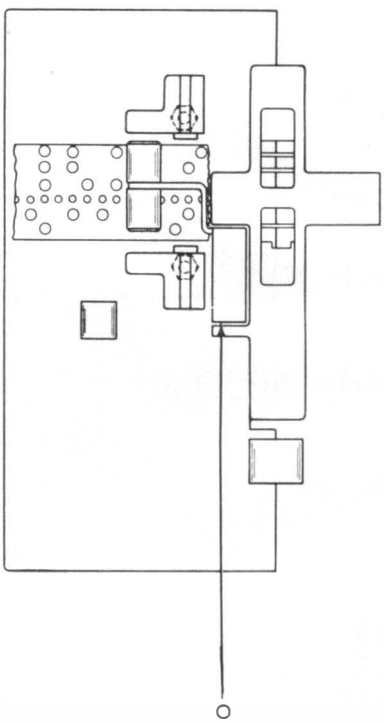


28E AND 28H-TYPE
TRANSMITTER-

P34.513

DISTRIB-
UTOR
UNITS

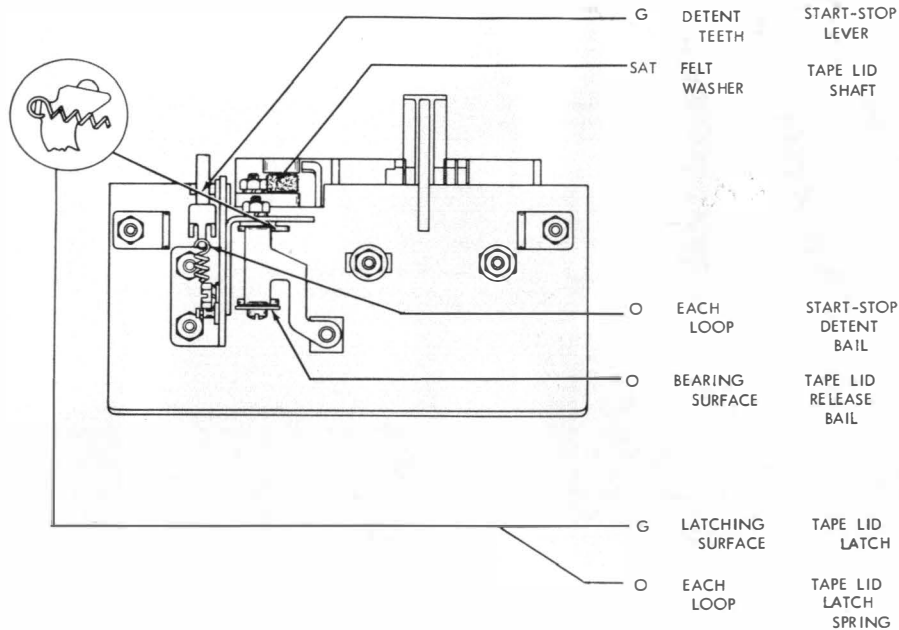
2.02 Tape-guide Plate



BEARING
SURFACE

TIGHT TAPE
BALL

2.03 Tape-guide Plate



28E AND 28H-TYPE

TRANSMITTER-

DISTRIB-

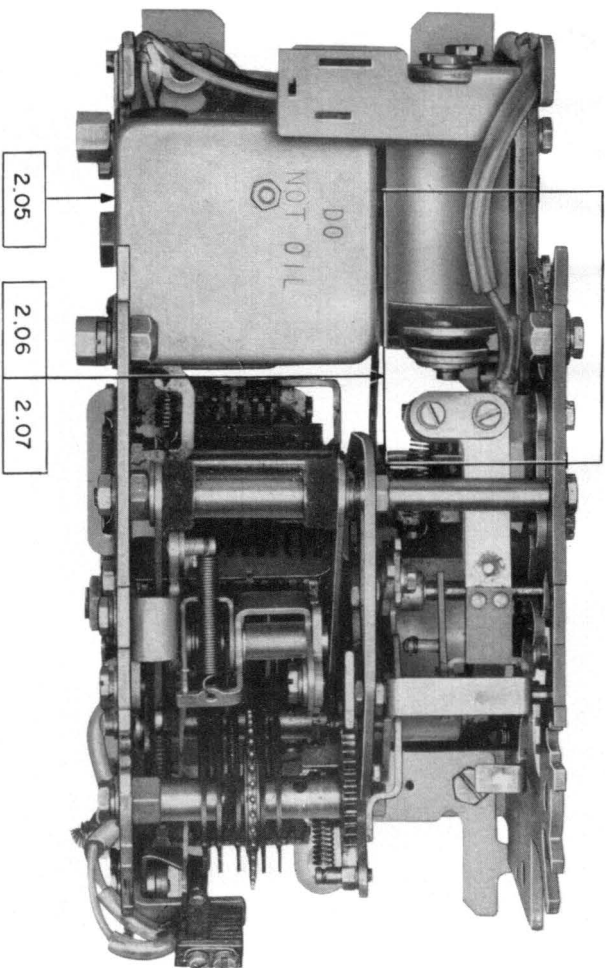
UTOR

UNITS

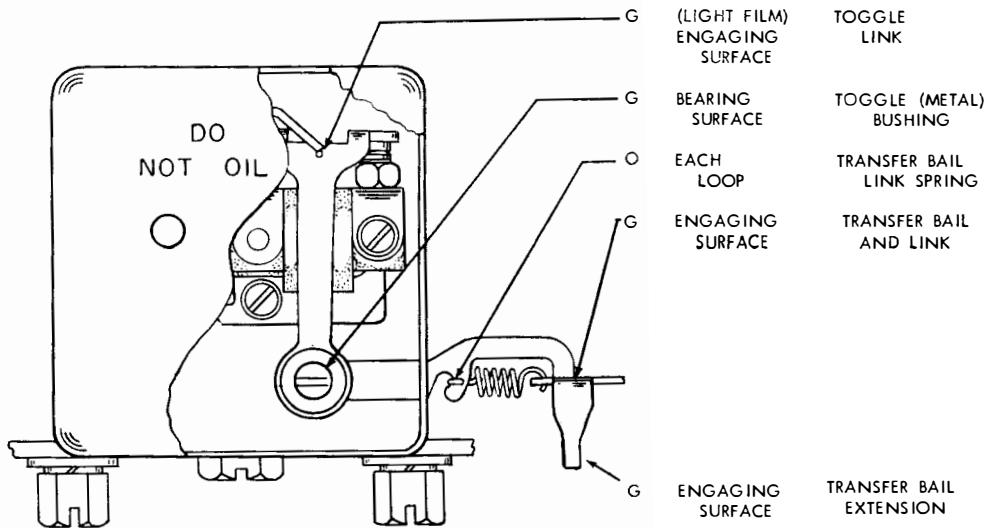
P34.513

Page 5

2.04 Signal-contact and Clutch-trip Assemblies (Top View)

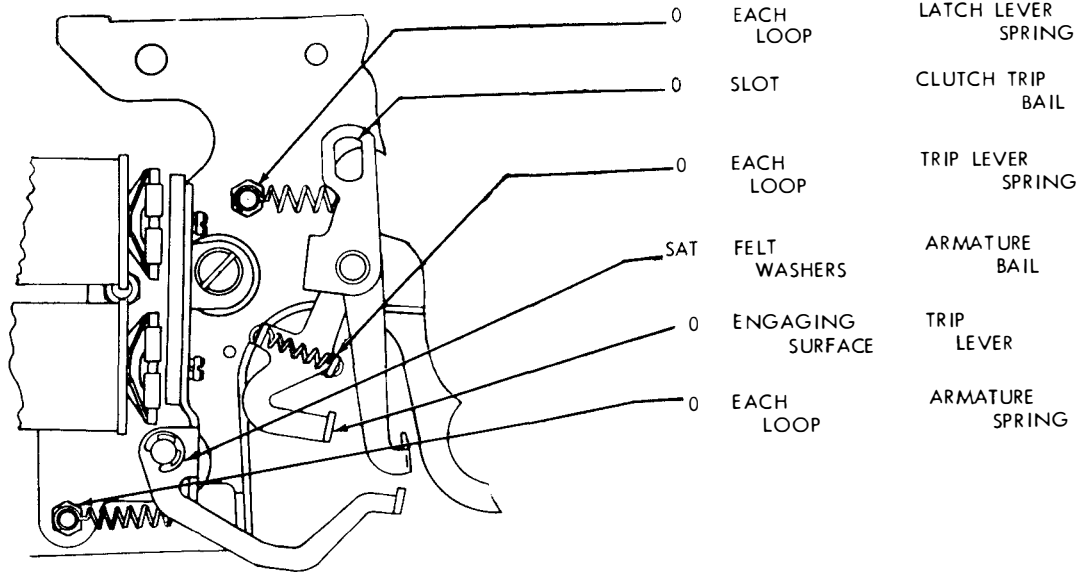


2.05 Signal-contact Assembly



NOTE: THE MARKING "DO NOT OIL" ON THE SIGNAL-CONTACT BOX SHOULD BE INTERPRETED LITERALLY. PORTIONS OF THE MECHANISM SHOULD BE GREASED AS INDICATED, BUT NO OIL SHOULD BE USED.

2.06 Clutch-trip Assembly



- 0 EACH LOOP
- 0 SLOT
- 0 EACH LOOP
- SAT FELT WASHERS
- 0 ENGAGING SURFACE
- 0 EACH LOOP
- LATCH LEVER SPRING
- CLUTCH TRIP BAIL
- TRIP LEVER SPRING
- ARMATURE BAIL
- TRIP LEVER
- ARMATURE SPRING



2.07 Clutch-trip Assembly

SAT
FELT
WASHER

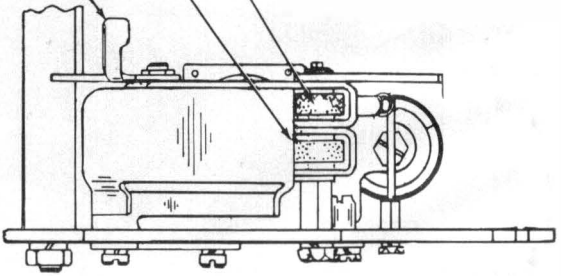
SAT
FELT
WASHER

G
ENGAGING
SURFACE

LATCH
LEVER

TRIP
LEVER

ARMATURE
BALL
EXTENSION

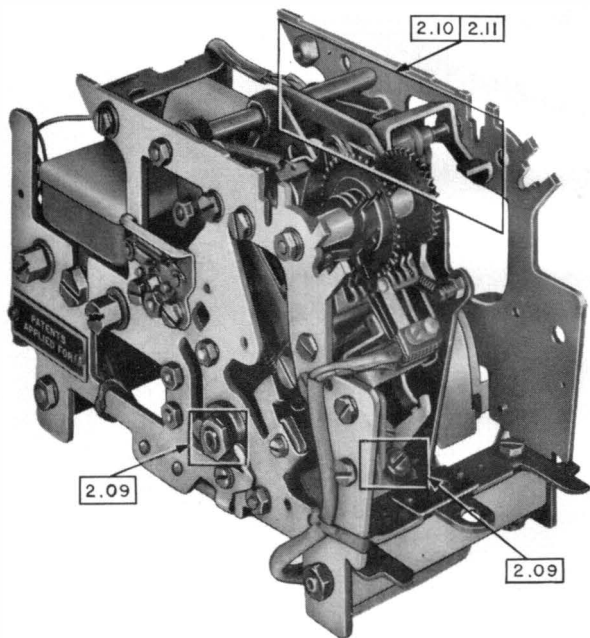


28E AND 28H-TYPE
TRANSMITTER-

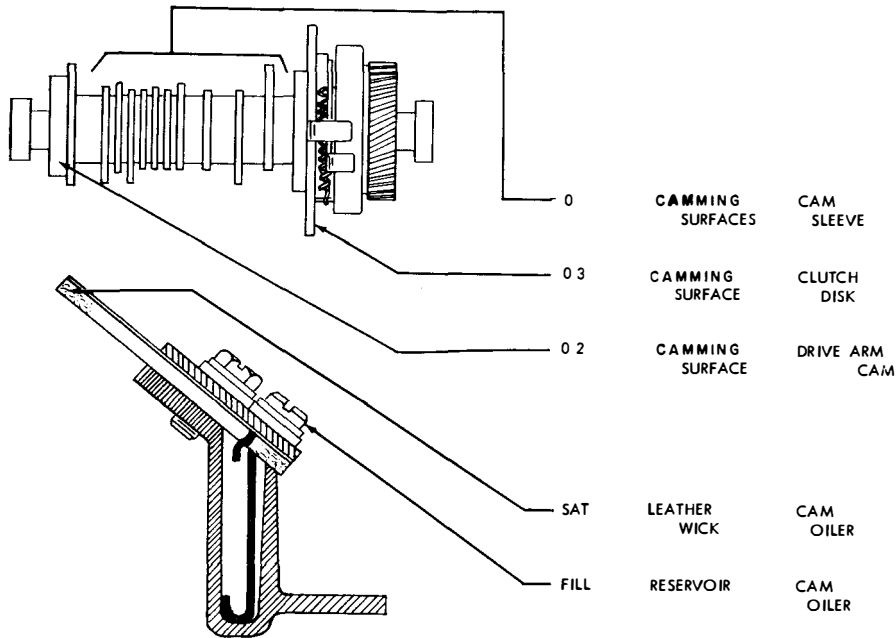
P34.513

DISTRIB-
UTOR
UNITS

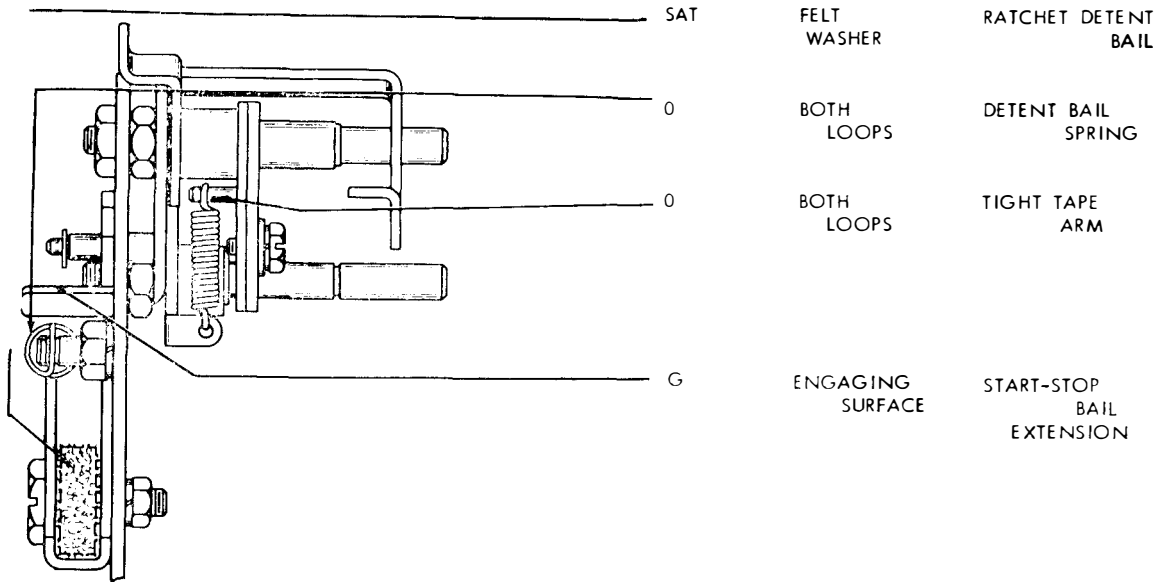
2.08 Main Shaft, Oil Reservoir, and Center-plate Assemblies



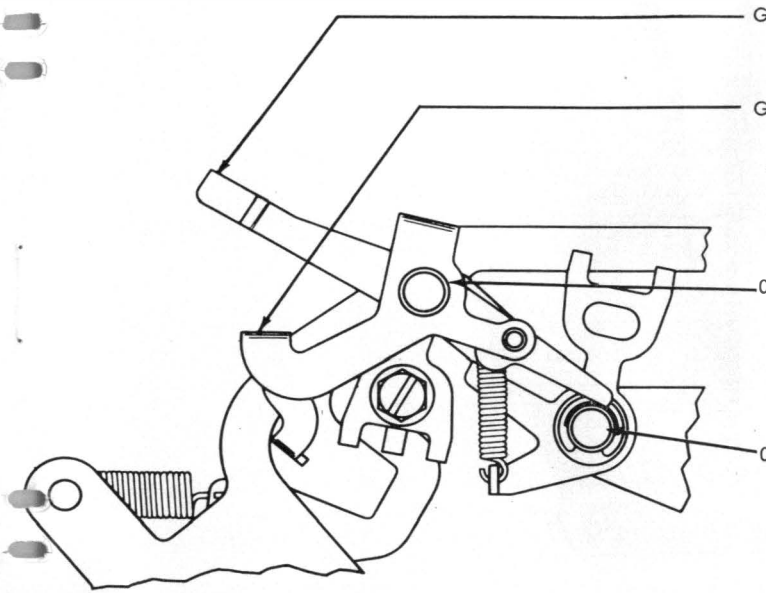
2.09 Main Shaft and Oil Reservoir



2.10 Center-plate Assembly



2.11 Center-plate Assembly



ENGAGING
SURFACE

TIGHT TAPE
ARM

ENGAGING
SURFACE

START-STOP
BAIL

BEARING
SURFACE

START-STOP
BAIL

BEARING
SURFACE

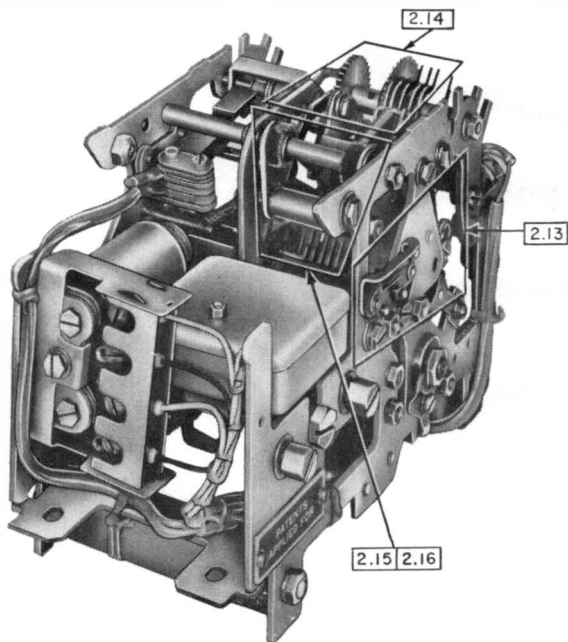
YIELD
ARM

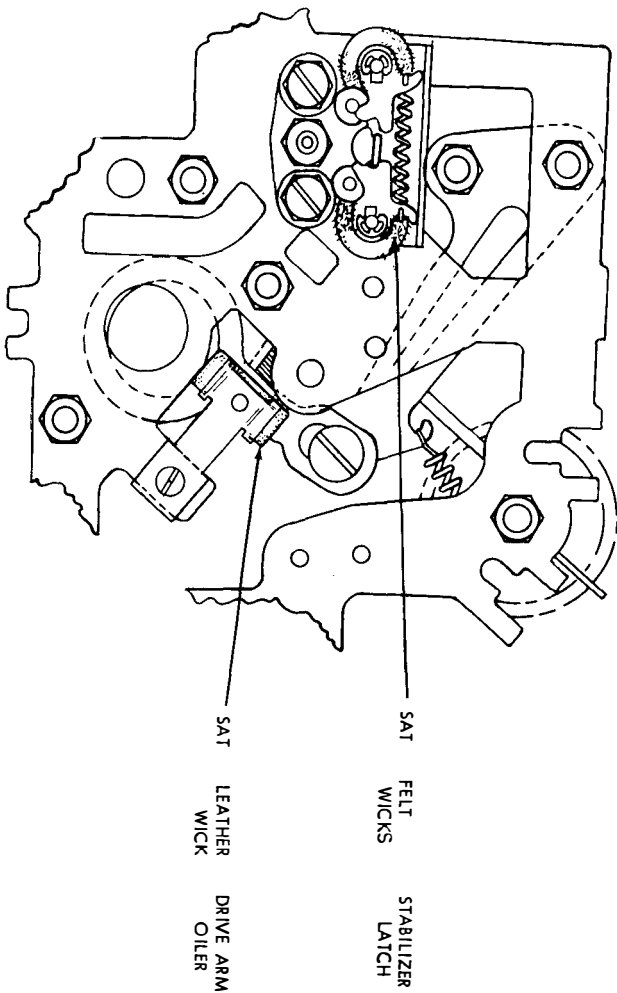
28E AND 28H-TYPE
TRANSMITTER-
DISTRIBUTOR
UNITS

P34.513

Page 13

2.12 Front Plate Assembly



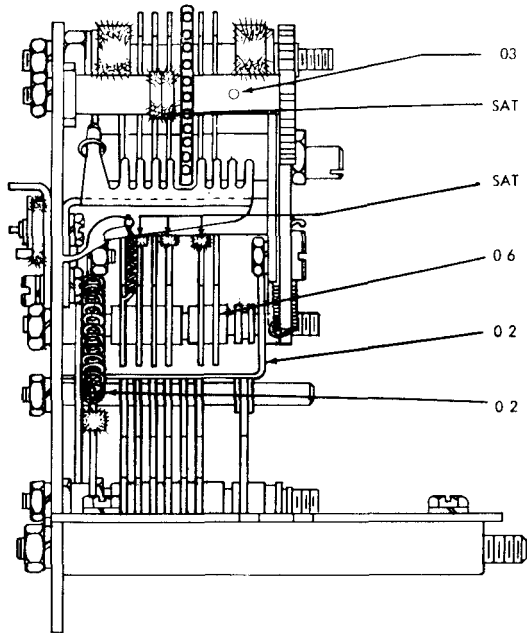


28E AND 28H-TYPE
TRANSMITTER-

P34.513

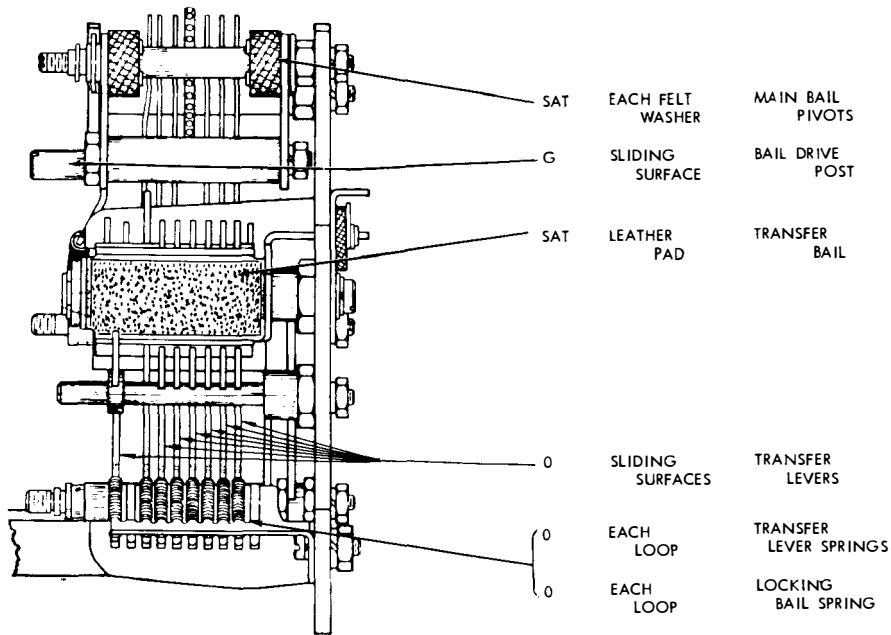
DISTRIBUTOR
UNITS

2.14 Sensing and Feed Mechanism

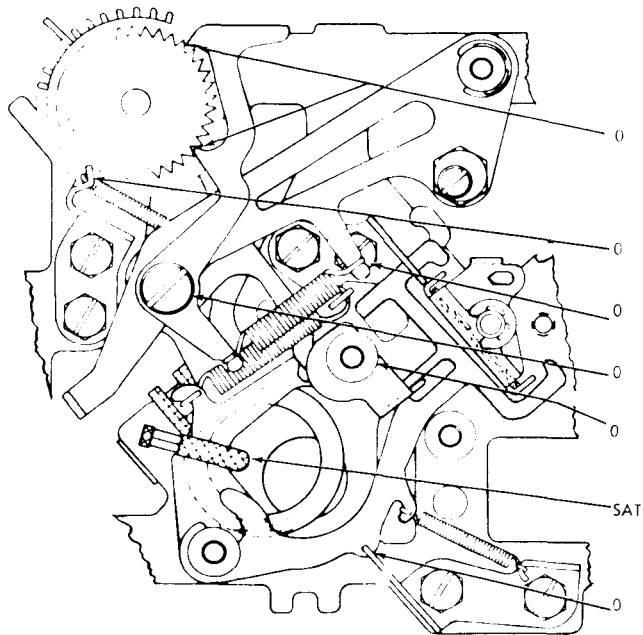


03	SHAFT	FEED WHEEL
SAT	FELT WICKS	FEED WHEEL BEARING
SAT	FELT WICKS	SENSING PINS
0.6	SLIDING SURFACE	SENSING PIN GUIDE POST
0.2	SLIDING SURFACE	LOCKING BAIL
0.2	BOTH LOOPS	LOCKING BAIL SPRING

2.15 Transfer Mechanism



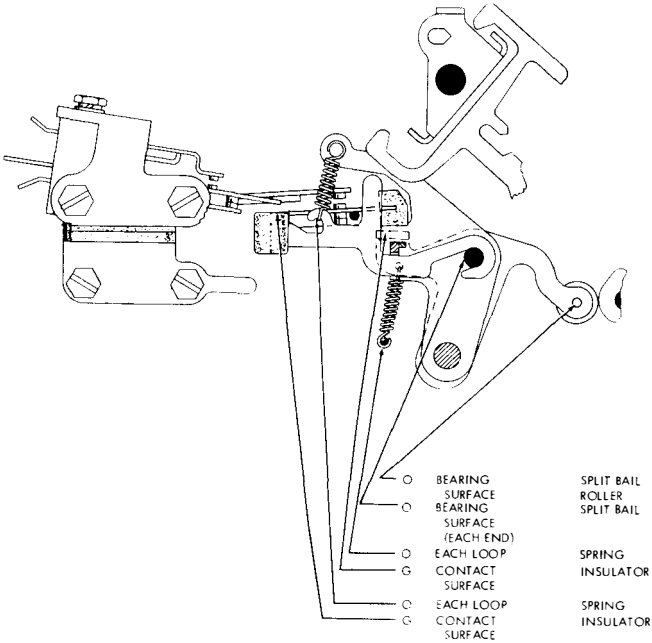
2.16 Transfer Mechanism



- | | | |
|-----|------------------|-----------------------------|
| 0 | TEETH | FEED PAWL AND RATCHET WHEEL |
| 0 | EACH LOOP | TRANSFER LEVER SPRINGS |
| 0 | EACH LOOP | FEED PAWL SPRING |
| 0 | SLIDING SURFACE | FEED PAWL PIVOT |
| 0 | ENGAGING SURFACE | LOCKING BAIL |
| SAT | FELT WASHER | LOCKING BAIL |
| 0 | SLIDING SURFACE | TRANSFER LEVERS |

B. Auxiliary Features

2.17 Split-bail Code Reading Contacts (When Equipped With Multiple Wire Output Facilities)



28E AND 28H-TYPE
TRANSMITTER-

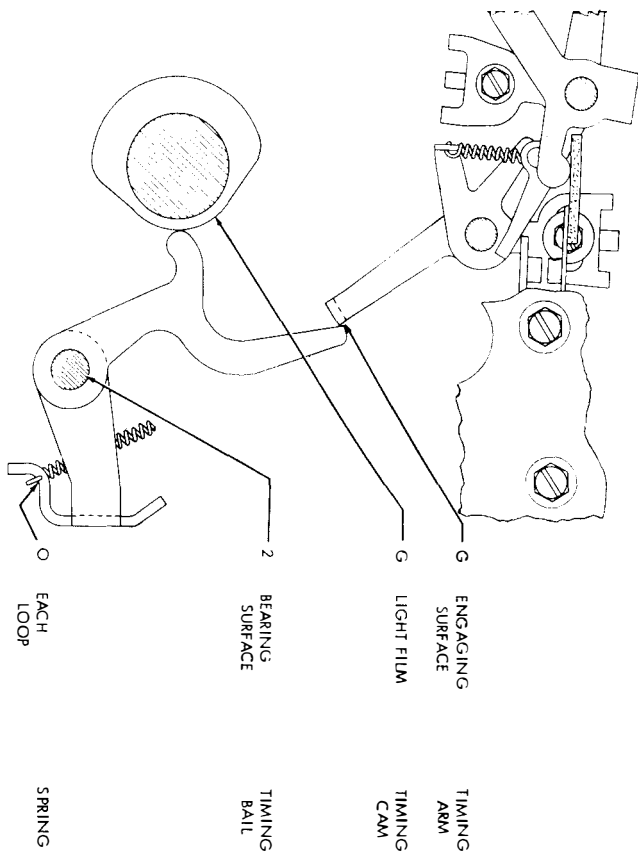
P34.513

DISTRIB-

UTOR

UNITS

2.18 Timing Bail (When Equipped With Tabulator Control)



3. ASSOCIATED BELL SYSTEM PRACTICES

3.01 Other Bell System Practices that may be required in connection with this section are listed in Section P34.001, Alphabetical Index of 28-type Equipment, Bell System Practices, and Associated 28 ASR Station Drawings.



.

