

INSTRUCTIONS FOR INSTALLING THE 333456 MODIFICATION KIT
TO PROVIDE MOBILITY FOR MODEL 35 KSR OR ASR SETS

1. GENERAL

- 1.01 The 333456 modification kit provides mobility for Model 35 KSR or ASR Sets when it is required that they be easily moved between operating locations.
- 1.02 The 333456 modification kit may be installed on any standard Model 35 KSR or ASR Set (with a screwdriver and wrench), does not require any cabinet workover, and keeps approximately the normal keyboard height.
- 1.03 The two front casters of the kit have a breaking device for use during unit operation.
- 1.04 The new feet of the kit extend four inches beyond the rear of the cabinet for more stability of the unit.
- 1.05 The 333456 kit consists of:

<u>Qty</u>	<u>Part No.</u>	<u>Description</u>	<u>Qty</u>	<u>Part No.</u>	<u>Description</u>
8	2449	Washer	2	186229	Caster
8	2846	Washer	2	332858	Foot
8	6035	Screw	2	332859	Bracket
2	186227	Caster			

2. INSTALLATION

- 2.01 Assemble the 186227 caster with nut and lockwasher to the rear of the 332858 foot. Tighten the nut after meeting the proper height dimension (Figure 1).
- 2.02 Assemble the 186229 ball caster with brake, nut, and lockwasher to the front of the 332858 foot. Tighten the nut after meeting the proper height dimension (Figure 1).
- 2.03 The 332859 bracket is attached to the assembled 332858 foot (Figure 2) with a 6035 screw (3), 2449 lockwasher (3), and 2846 flat washer (3). (The slots are mounted on the foot.) The 332859 bracket is to be oriented so that one assembled foot can be used on the right side and another assembled foot on the left side of pedestal.
- 2.04 Remove the present feet and discard. Save the associated hardware, as these are required later.
- 2.05 Attach assembled foot with bracket onto the left side of the pedestal. Use the hardware removed in 2.04 to attach the pedestal to the 332859 bracket on the assembly (Figure 2).

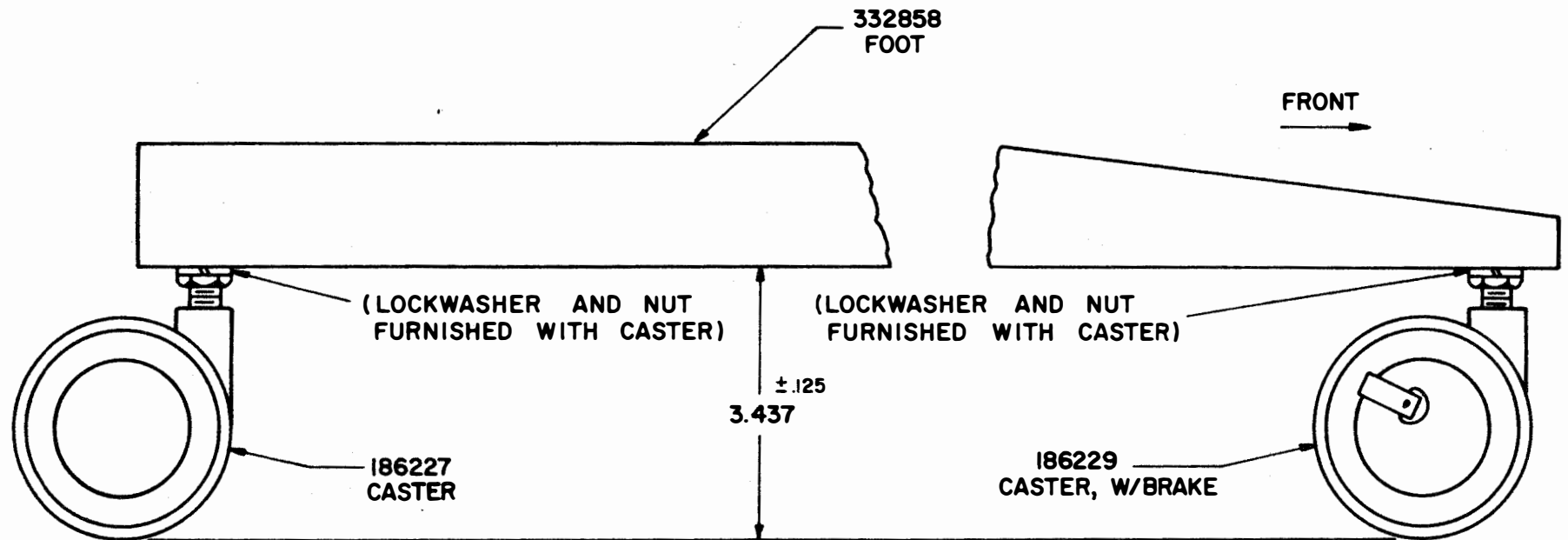
SPECIFICATION 50687S

2.06 Attach the assembled foot with bracket to the right side of the pedestal using the identical mounting hardware as used to mount the left foot assembly. The foot must be positioned as close as possible to the pedestal. Loosen the screws in the slot to position the pedestal and foot as required. Do this on both sides. Tighten screws.

2.07 Loosen the nuts on the front casters, adjusting the height of the rollers, to keep the keyboard level and prevent rocking of the pedestal. Tighten the nuts.

* * *

FIGURE 1



SPECIFICATION 50687S

SPECIFICATION 50687S

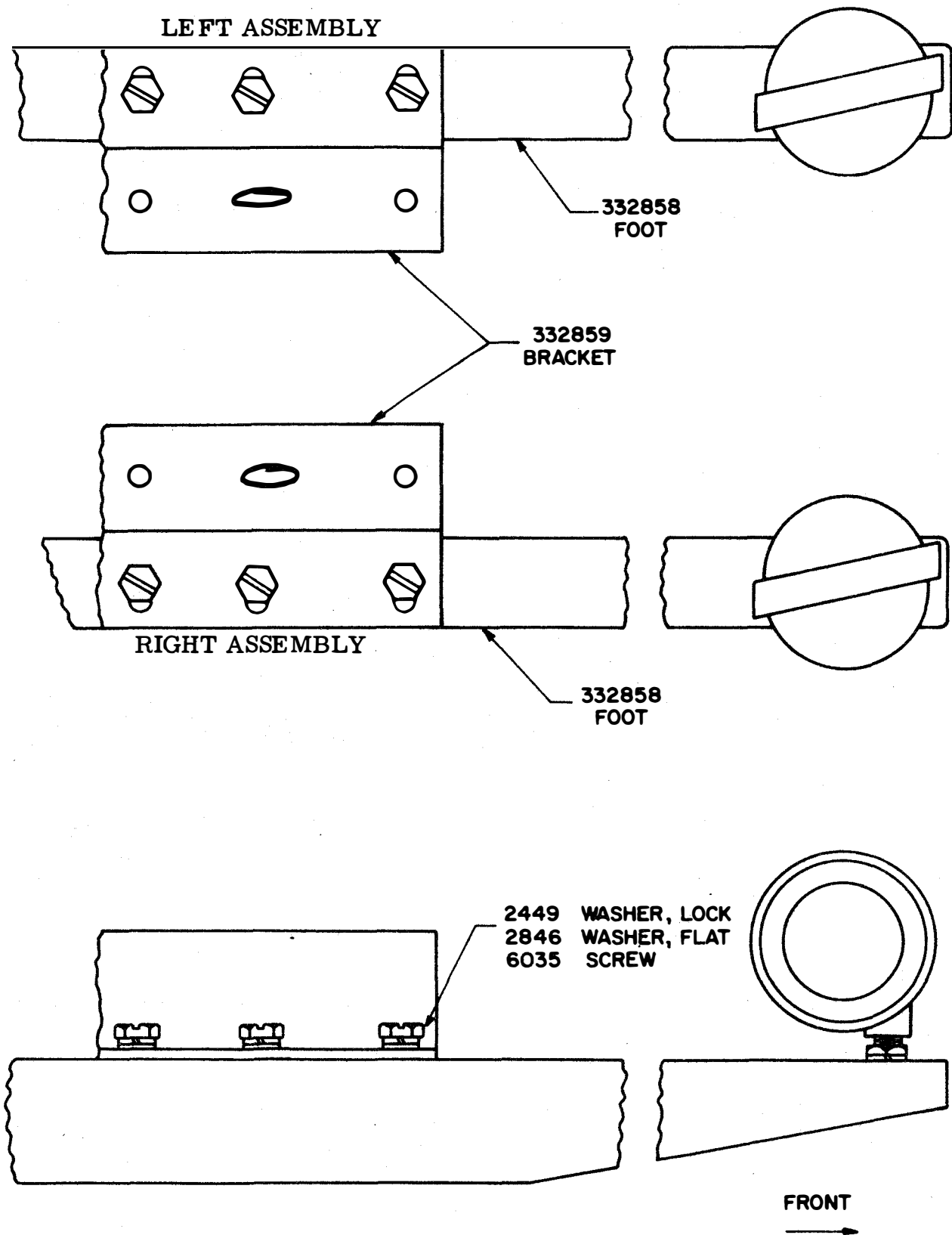


FIGURE 2