

INSTRUCTIONS FOR REPLACING THE 153560
SHAFT WITH BUSHINGS ON A MODEL 28 TYPING
UNIT (LP6 AND UP) AND A MODEL 28 SEQUENTIAL
SELECTOR USING THE 154789 MODIFICATION KIT

1. GENERAL

a. The 154789 Modification Kit provides a field replacement for the 153560 Shaft on a Model 28 Typing Unit (LP6 and up) serial numbers below 66087, and a Model 28 Sequential Selector, serial numbers below 1150, with one of improved design. General replacement of old style designed shaft is not recommended.

b. The 154789 Modification Kit consists of:

1	2191	Washer, Lock	1	155864	Shaft, Cam
1	3598	Nut 6-40 Hex.	1	155865	Stud

c. For part numbers referred to and for parts ordering information see Teletype Model 28 Printer or Sequential Selector Parts Bulletin.

2. INSTALLATION (Figure 1)

a. Remove the typing unit from the keyboard base.

b. Remove the front plate assembly in accordance with standard practice.

c. Unhook the two 154688 Springs connecting the 153573 Bail and 153560 Shaft.

d. Remove the 153558 Link by removing two 119652 Retainer Rings. Discard one of the retainer rings.

e. Loosen the two 2539 Nuts at the ends of the 153560 Shaft with bushings so that they are free from the 150414 Bushings. Position the 150414 Bushings sufficiently to the side and remove and discard the 153560 Shaft with bushings. Retain the 2539 Nuts, 90819 Felt Washers, and 73175 Lock Washers. Discard the following parts mounted on the 153560 Shaft with bushings: Three 153580 Cams, one 153554 Bracket with pin, two 153579 Spring Arms, ten 151657 Screws, and nine 2191 Lock Washers.

f. Install the 155864 Cam Shaft with end having the ears which fasten to the 153558 Link in the right side frame, when viewing the typing unit from the front, using the 90819 Felt Washers, 2539 Nuts, and 73175 Lock Washers previously removed.

g. Tighten the two 2539 Nuts at the ends of the 155864 Shaft.

h. Secure the 153558 Link to the 153550 Link using a 119652 Retainer Ring.

i. Install the free end of the 153558 Link between the two ears on the 155864 Cam Shaft using the 2191 Lock Washer, 3598 Nut, and the 155865 Stud.

NOTE

The threaded end of the stud should be pointed toward the long end of the shaft. The notch-end of the link should be toward the shaft and the large flat part of its bushing should be toward the short end of the shaft.

j. Replace the two 154688 Springs between the 155864 Cam Shaft and 153573 Bail.

k. Replace the front plate assembly.

3. ADJUSTMENTS AND LUBRICATION

For adjustment and lubrication procedure refer to standardized adjustment information. Check the Function Reset Bail Blade adjustment.

Place two drops of oil on the spring loops, bearings and cam surfaces.

* * *

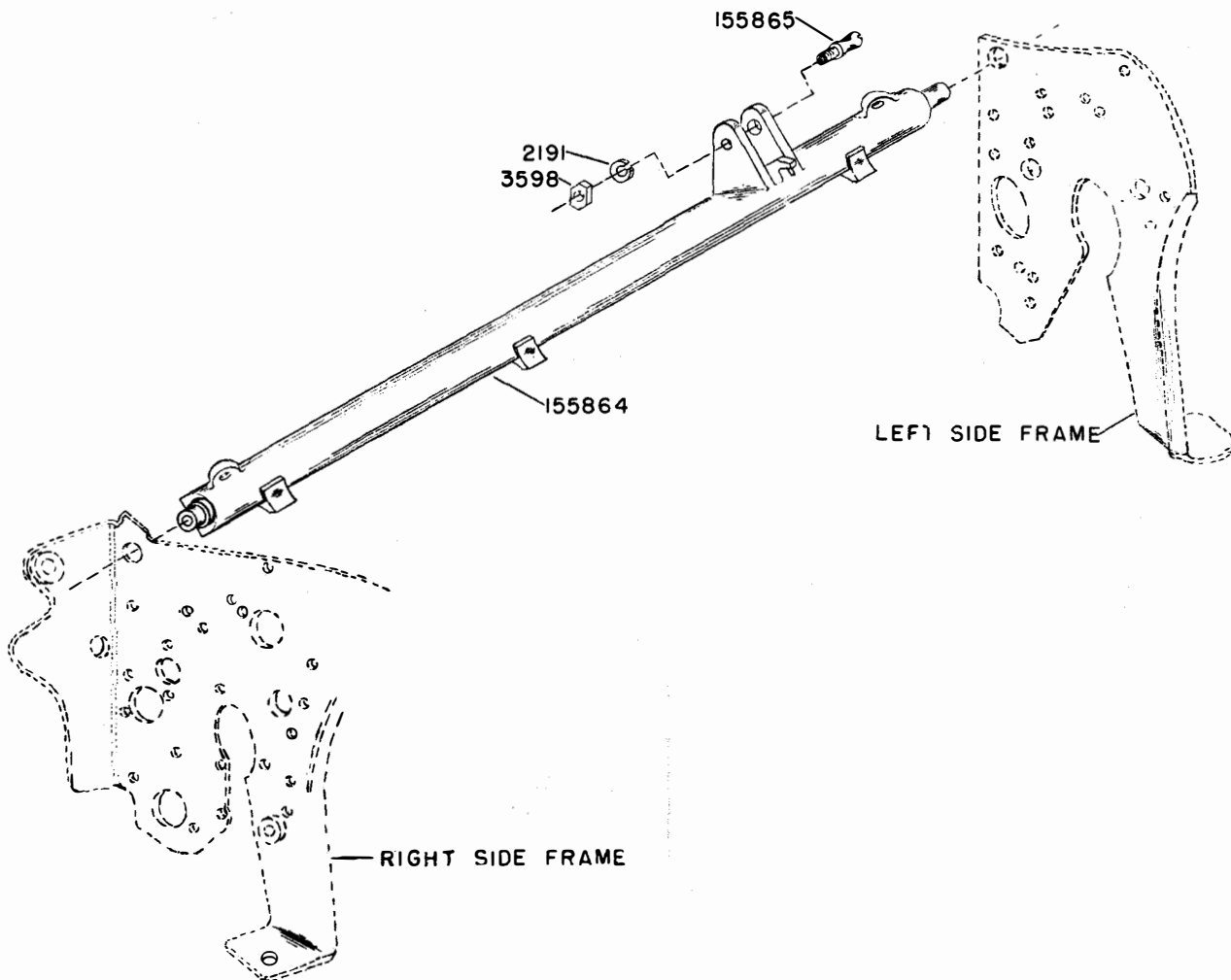


FIGURE 1