

RTTY

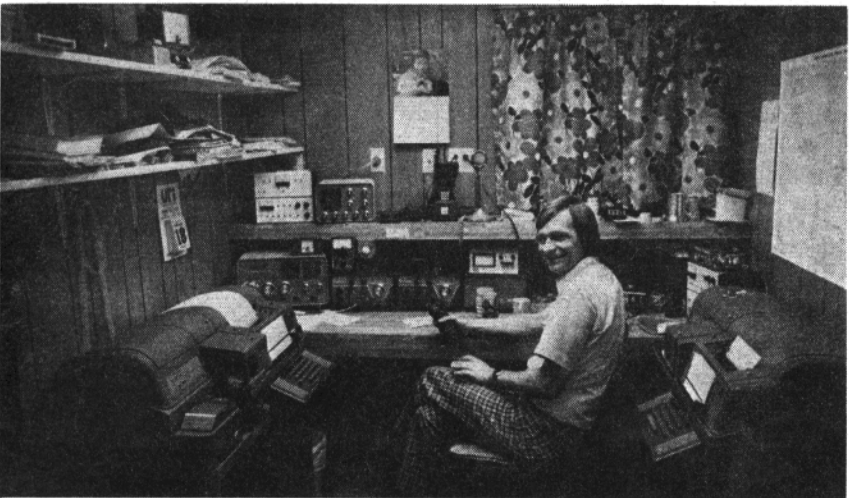
January 1978

JOURNAL

EXCLUSIVELY AMATEUR RADIO TELETYPE

VOLUME 26 No. 1

35 Cents



W8C GK ROGER

Happy New Year

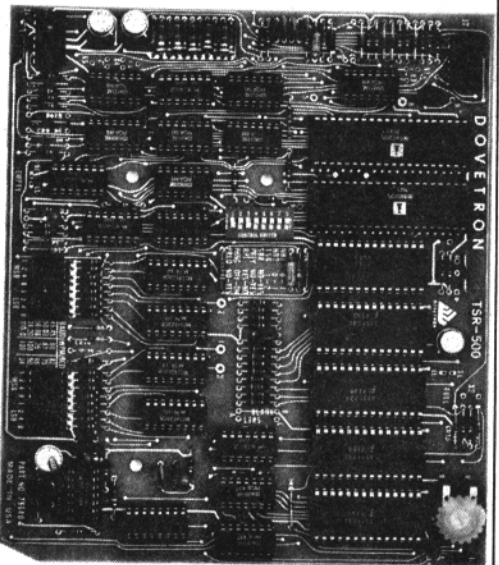
FROM THE STAFF



DOVETRON

627 Fremont Ave.
P. O. Box 267
South Pasadena, CA. 91030

TSR-500 BY DOVETRON



2 CMOS UARTS & 5 FIFO MEMORIES

SIGNAL REGENERATION, UP-DOWN SPEED CONVERSION, 200 CHARACTER FIFO MEMORY, WORD-CORRECTION, VARIABLE CHARACTER RATE, BLANK/LTRS DIDDLE, MEMORY PRELOAD & RECIRCULATE, AUTOMATIC CHARACTER RATE OVER-RIDE & TEE DEE INHIBIT.

Complete with power cables and speed switch: \$270.00 (Postpaid)

Second Class Permit Pending
Encinitas, California 92024

New address of the RTTY JOURNAL
PO Box RY, Cardiff by the Sea, CA. 92007

Subscription Rates

RTTY JOURNAL

Dee Crumpton, Editor & Publisher
P.O. Box RY
Cardiff by the Sea, CA. 92007

U.S. Canada, Mexico, \$3.50
Canada, Mexico, Air Mail 6.00
Surface Mail 4.00
Other Countries - Air Mail 12.00

Published 10 times per year, May-June
July-August are combined issues.
Second Class permit Encinitas
California 92024.

Subscription rates above.

Business Offices
1155 Arden Drive
Encinitas, California 92024

POSTMASTER SEND FORM 3579 to
Post Office Box 179
Cardiff by the Sea, California 92007

New subscriptions and classified ads
are cash in advance as we have no
method for billing. New subscriptions
will be started with the current issue
and one back issue, if requested. .
Please do not ask us to start any
further back than this. The JOURNAL
is mailed about the 20th of the month
preceding the dated month. May and
June are combined in one issue and
July and August are combined in one
issue.

BACK ISSUES

A duplicate of any back issue may be
obtained from R. Wilson, 4011 Clearview Dr.,
Cedar Falls, IA. 50613. \$1.00 pp. Reprints of
all UART articles, \$2.00 pp.

RTTY JOURNAL
PO Box RY

Cardiff by the Sea, CA. 92007

CONTENTS

Part 3 of 3 parts

AUTOCOM MA4

FORIEGN SUBSCRIPTION
MANAGERS

EUROPE

JEAN F. HURTAUD F8XT
Chillac
16480 Brossac, FRANCE

ENGLAND

ARTHUR OWEN G2FUD
Gwenarth
184 Hale Road
Hale, Cheshire ENGLAND

AUSTRALIA- NEW ZEALAND

NORMAN WILSON
Post Office Box 81
Albion Brisbane,
Queensland 401 AUSTRALIA

JAPAN

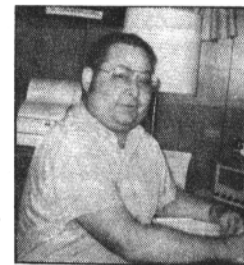
TOSHIO HOTTA
4-5-11, Tomida,
Yokkaichi City
Mie-Pref., JAPAN 512

Bibliography of RTTY Journal
from 1-1959 to 12-75 may be
obtained from Gary Buda, WAØ
NDN, 8212 Douglas Drive North,
Brooklyn Park, MN 55443 for
\$1.00 postpaid.



VHF RTTY NEWS

Arny Gamson, K6PXA, 8034 Gentry
N. Hollywood, CA 91605



The shock has worn off from losing a
good friend and Super RTTY Ham.
But Don-W6KCW's great work will
continue. I will be the V.H.F. Editor as
Chuck-W6MNO takes over as Journal
Editor. Dee-Mrs. W6KCW will be the
Publisher. I consider it an honor being
selected as V.H.F. Editor for the Journal
with its impressive world-wide cir-
culation. With your inputs we will
continue to have an interesting, in-
formative column as Chuck had. We
would like to feature the following;
News of RTTY activity, People and Clubs
all over the world. Please write with
information and comments. We will
answer all.

An introduction may be in order.
Amateur activity best enjoyed is rag-
chewing RTTY and Hi speed C.W. (re-
member that?). We also enjoy writing,
chess and astronomy. We maintain a
large fleet commercial two-way radio
system for an oil company; thinking
we do our small part contributing to
their 6 Billion dollar annual gross (poor
company). Working in radio during the
day we relax by becoming an appliance
operator at night (who said Jeckle and
Hyde?). Vital Statistics: Age 37 (feel
like 20). (ex-Navy Shipboard RTTY
and C.W. Radioman.). Married, with a
9 year old harmonic Stevie who also
likes the green keys and writing.

We have been associated with the
other Journal Staff, Don-W6KCW,
Chuck-W6MNO and Skip-WB6CYA
for a couple of years through our Club
"The Southern Counties Amateur
Teleprinter Society (S.C.A.T.S.)".

What follows is a brief on exclusive-
RTTY Repeater activity on the West
Coast with Clubs we are in touch with
or are establishing communications.
More updates as you supply them.
We will look at the rest of the Country
and World in later issues.

Chuck-W6MNO elected President of
a newly formed Club: San Diego Tele-
printer Society(S.D.T.S.). They al-
ready have a 220 MHZ. Repeater soon
to be operational. Lots of interest and
activity on 220 RTTY and Voice.

One hundred miles north is the 10/70
Repeater on Contractors Point (North-
West Los Angeles) sponsored by the
Southern Counties Amateur Teleprinter
Society (S.C.A.T.S.). Very high activity
and almost constant useage nitely.
Features Traffic-Bulletins-Information-
Rag Chewing and Picture Nets weekly.
Also a unique "Status-information"
Computer service courtesy of Joe Young-
W6RLL.

Two hundred miles North of L.A. is the
Bear Mountain 10/70 Machine near
Fresno. Coverage blankets the San
Joaquin Valley (Central California).
Sparce regular users (about 15 regulars)
but growing. Sponsored by the Central
California Amateur Teleprint Society
(C.C.A.T.S.).

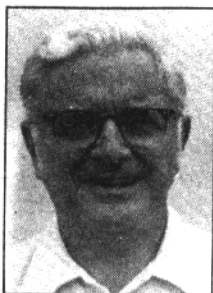
North West is the San Francisco Bay
Area 147.93/33 Machine sponsored by
the Amateur Communication Society
not an exclusive-RTTY Club.

Portland, Oregon has the 147.78/18
machine sponsored by the Portland
RTTY Society. CU ENJOY

HITS & MISSES

From The Editor and his Mail

CHUCK EDWARDS W6MNO



Everyone knows by now that our former Publisher and Editor Don W6KCW became a silent key. This happened in his sleep at 12:30 AM on Monday, November 21st, 1977. It happened just when good ole Don was getting the RTTY JOURNAL on an even keel and making tremendous headway in building it up to be a profitable business as well as a lot of pleasure in getting it out each month. In order to help out and try to keep Don's work going I volunteered to take over the Editors job until other arrangements can be made, and to let some other unsuspecting fellow take over my VHF Column. Arny Gamson K6PXA, of the Los Angeles group, is this fellow and he has graciously agreed to take over that chore. He is the editor of his club's magazine so he does do an excellent job, as you will see. Don's XYL Dee will continue with the publishing details like business and taking in the checks and ads and all that. I feel that with this arrangement we will GO with the JOURNAL. However, should some enterprising person desire to take the JOURNAL over I think that Dee may entertain any offers made. You can address correspondence to her at the JOURNAL address.

Skip WB6CYA, will continue with his most able DX column and will help out wherever he can with our duties. Unfortunately, he may soon have to

change his billet, being in the navy, they do want him to make changes now and again. That may make the DX editorship open for someone who would like to take Skips place. We will of course, keep our readers informed of progress along this line.

With Don's passing and all the changes that are evident in the JOURNAL STAFF there may be some apprehension amongst our readers that the JOURNAL will fold up. Some will worry about renewing their subscriptions and ads. Let me assure everyone, that the JOURNAL will go on and hopefully, as well as before. We even hope to improve it with some of the ideas that Don had and had not yet implemented. Don and I were old time buddies and I will see to it that no matter what, the Journal will go on!

We may be late for a month or two, but that will not last long as our plans are to get it out early rather than late as it has been in the past.

In checking through the files and incoming letters, and with discussions with our late Editor I have found that the JOURNAL is being sent to more than 105 countries, not including the United States. That new subscriptions are coming in daily at the rate of ten per DAY. That means thirty new readers each month or 3600 more each year. I mention this as I wanted you to know that the JOURNAL is growing by leaps

and bounds. The BEGINNERS HAND BOOK is selling like hot cakes. We had to put in a new order to the printers for another big batch. So you who are waiting for this handbook it will be in the mail very soon. Plans are still, to enlarge this handbook, and include much more information not only for the beginner but for the old timer as well.

Such things as stunt box changes and WRU inclusion is just one of the new items.

It is sincerely hoped and prayed that each of you will bear with us during this very trying period, especially me until we all learn the ropes and feel more at ease with this new task. THANKS FELLOWS!

73...W6MNO CHUCK

<p>RTTY ID GENERATOR PLUG IN BOARD SAME SIZE AS ST-6 BOARDS. EASY INTERFACE TO ST, DT & UT GEAR. ACCEPTS PLUS 5 OR 12 VOLT SUPPLY. 31 CHARACTERS MUST INCLUDE LTRS, FIGS, SPACE, ETC. SUPPLY DESIRED CODING WITH ORDER. PROM COMES CODED \$34.99</p> <p>CW ID KITS AUTOMATIC RESETABLE 10 MINUTE TIMER. SINGLE PLUG IN BOARD SAME SIZE AS DT-600 ID INTERFACING TO ST & DT SERIES TU'S INCLUDED WITH H.V. INTERFACE FOR DIRECT TRANSMITTER KEYING. VARIABLE SPEED OPTION. REQUIRES +5 OR 12 VDC \$37.90</p>	<p>KEYBOARD COVERS W 14 D 8.3 H 3 \$13.50 14 " 11.3 " 3 \$14.50 SHIPPING INCLUDED SPECIFY WHITE OR BLACK TOP</p> <p>ELECTRONIC PARTS RESISTORS CAPACITORS DIODES TRANSISTORS IC'S SWITCHES CABINETS TRIMPOTS METERS FUSES TEST CLIPS AND MUCH MORE</p> <p>NuData Electronics 104 N. EMERSON ST. STAMP MT PROSPECT, ILL. 60056 BRINGS PHONE 312-392-2358 CATALOG</p>	<p>10 MINUTE TIMER ADJUSTABLE FROM 1 TO 15 MINUTES, TIME MAY BE EXTENDED. Q OR Q OUTPUTS. REQ. +5V \$8.95 kit.</p> <p>EXPANDABLE PROTOBOARD IDEAL FOR SMALL PROJECTS \$10.70 ea.</p> <p>TELETYPE REPAIR SERVICE ANY TELETYPE CORP. MACHINE \$15.00 PLUS PARTS. NON-COMMERICAL WORK ONLY CALL OR WRITE</p>
--	---	---



NAME TAGS

...WITH "RTTY" IF DESIRED....
 BEAUTIFULLY ENGRAVED
 CALL PLATES WITH PIN

CALL ONLY \$1.80 PLUS NAME \$2.15
 WITH CLUB NAME \$2.90
 Over pocket with pin ad 75¢

FAST SERVICE SPECIAL DISCOUNTS TO CLUBS Write for quote
 COLORS: Green, Blue, Black / white letters
 DESK AND SHACK PLATES ANY COLOR \$3.75

Calif. res. please add 6% sales tax
 Postage Paid in U.S.A.

EDCO ENGRAVING
 P. O. Box 15093
 San Diego, Calif. 92115

NEW BOOK ON FILTER DESIGN

"Active Network design" by Claude S. Lindquist is a new 749 page book which describes filter design and applications. It is an invaluable reference for managers, engineers and technicians who must understand signal processing and filtering and who must specify, design or adapt filters for their own uses. A.B. Williams of Coherent Communications Systems says, "It is the most impressive textbook on filters I have come across."

The book features standard design curves and tables, e.g. filter nomographs, response curves, component specifications, etc., practical design examples e.g. Touch-tone telegraph, and Dolby 8 filters; amplitude and delay equalizers etc., numerous problems with selected problem solutions, which form an encyclopedia of terminology and specifications such as magnetic tape equalizers audio equalizers, acoustical data couplers, scramblers etc., extensive references, original and unpublished research results, e.g. delay analysis, high-frequency filters, tuned filters, discriminators, etc., and complete cross-referenced index including applications. S.N. Thanos of Rockland Systems Corp. says, "(it is) the best treatment of this subject I have ever seen."

Send SASE for information on this book to THE JOURNAL

BUY YOUR RITTY BEGINNERS HANDBOOK

ONLY
A FEW REMAINING AT \$2.50

IF A METAL OBJECT WERE DROPPED IN THE DEEPEST PART OF THE OCEAN, IT WOULD TAKE NEARLY 63 MINUTES FOR IT TO FALL TO THE BOTTOM.

AUTOCOM MA4

K9WRL

Neil Peflock

104 N. Emerson Street

Mount Prospect, IL 60056

This issue will conclude the article. Anyone desiring previous issues to complete this fine piece of gear may write to Red Wilson, 4011 Clearview Dr., Cedar Falls, IA 50613. Included in this conclusion are the parallel generator edge connectors, the memory electronics edge connectors, decode board edge connectors, interface board edge connectors and the edge connectors for the power supply.

UT 2 / PARALLEL GENERATOR EDGE CONNECTOR CONNECTIONS

FOIL SIDE	COMPONENT SIDE
A. SECOND CLOCK (PRINTER)	1. TO AUTOSTART RELAY.
B. TO AFSK INPUT	2. NOT USED
C. FIRST CLOCK (LINE)	3. NOT USED
D. TO ST 6 FSK LINE	4. NOT USED
E. TO SWITCH FOR ONE OR TWO STOP BITS. (SHORT TO GROUND FOR TWO)	5. NOT USED
F. TO ONE SIDE EXTERNAL TIMING* RESISTOR FOR PRINTER CLOCK.	6. TO FSK IN TRANSMITTER
H. TO OTHER SIDE OF EXTERNAL TIMING RESISTOR SELECTION SWITCH.	7. TO TRANSMIT SIDE OF RT SWITCH OR RT RELAY.
J. PLUS 5 VDC	8. PLUS 12 VOLTS DC
K. MINUS 12 VDC	9. TO OUTPUT LOOP KEYS FOR REC.
L. GROUND	10. TO REC. SIDE OF RT SWITCH OR RT RELAY.
M. DATA LINE #8 (NOT USED)	11. TO SIGNAL LED ON FRONT PANEL
N. DATA LINE #7 (NOT USED)	12. NOT USED
P. DATA LINE #6 (NOT USED)	13. NOT USED
R. DATA LINE #5	14. SYSTEM CLOCK, TO PINS "K", "U" MEMORY BOARD, TO #2 DECODE BOARD, TO "A" OF INTERFACE BOARD.
S. DATA LINE #4	15. INVERTED CLOCK OUTPUT (NOT USED)
T. DATA LINE #3	16. TO UART INPUT - REC.
U. DATA LINE #2	17. TO SECOND CLOCK INPUT **
V. DATA LINE #1	18. TO SWITCH FOR REQUIRED STOP PULSE OPTION.

* THE TIMING RESISTORS MAY BE CHANGED VIA A SWITCH TO VARY THE OUTPUT OF THE PRINTER CLOCK.

** USE FOR REC ONLY SYSTEM. FOIL SHOULD BE BROKEN AWAY FROM PIN 10 OF UART AND A STRAP ADDED FROM PINS 17 TO A. A STRAP IS ALSO ADDED UNDER THE UART FROM PIN 4 OF THE UART TO PINS 6 AND 11 OF IC 2. A PROVISION FOR THIS HAS BEEN ADDED TO THE BOARD JUST UNDER PIN 20 OF THE UART.

MEMORY ELECTRONICS BOARD EDGE CONNECTOR CONNECTIONS

FOIL SIDE

- A. TO HIGH WHEN RECEIVING FROM TU
- B. TO INTERFACE BOARD "V"
- C. TO CLR SWITCH
- D. NOT USED
- E. TO INTERFACE BOARD "E"
- F. NOT USED
- H. TO UT 2 BOARD "R"
- J. TO UT 2 BOARD "S"
- K. TO UT 2 BOARD #2
- L. PLUS 5 VDC
- M. TO UT 2 BOARD "T"
- N. TO UT 2 BOARD "U"
- P. TO UT 2 BOARD "V"
- R. NOT USED
- S. NOT USED
- T. NOT USED
- U. TO UT 2 BOARD #2
- V. TO DECODE BOARD "K"

COMPONENT SIDE

- 1. thru 17. NOT USED
- 18. GROUND

DECODE BOARD EDGE CONNECTOR CONNECTIONS

FOIL SIDE

- A. TO UT 2 BOARD "V"
- B. TO UT 2 BOARD "U"
- C. TO UT 2 BOARD "T"
- D. TO UT 2 BOARD "S"
- E. TO UT 2 BOARD "R"
- F. NOT USED
- H. NOT USED
- J. NOT USED
- K. TO MEMORY BOARD "V"
- L. TO INTERFACE BOARD #7
- M. TO INTERFACE BOARD #8
- N. NOT USED
- P. TO INTERFACE BOARD #17
- R. NOT USED
- S. TO INTERFACE BOARD "V"
- T. TO CLEAR SWITCH
- U. PLUS 5 V DC
- V. NOT USED

COMPONENT SIDE

- 1. GROUND
- 2. TO UT 2 BOARD #14
- 3. NOT USED
- 4. NOT USED
- 5. NOT USED
- 6. NOT USED
- 7. PLUS 5 VOLTS DC
- 8. NOT USED
- 9. NOT USED
- 10. NOT USED
- 11. NOT USED
- 12. NOT USED
- 13. NOT USED
- 14. NOT USED
- 15. NOT USED
- 16. TO INTERFACE BOARD #2
- 17. TO INTERFACE BOARD "N"
- 18. TO INTERFACE BOARD "K"

INTERFACE BOARD EDGE CONNECTORS CONNECTIONS

FOIL SIDE

- A. TO UT 2 # 14
- B. NOT USED
- C. TO MSG IN INDICATOR ON FRONT PANEL (LED)
- D. PLUS 5 VDC
- E. TO MEMORY BOARD "E"
- F. TO FORCE ON SWITCH S1
- H. TO RELAY FOR PRINTER AND CW ID CONTROL
- J. GROUND
- K. TO DECODE BOARD # 18
- L. TO ANSWER BACK TEST SWITCH
- M. TO TRANSMITTER TRUN ON SWITCH OR TO R/T CONTROL RELAY
- N. TO DECODE BOARD # 17
- P. TO TD ON RELAY
- R. ACTIVE HIGH OUTPUT FOR ANS. BACK CONTROL
- S. ACTIVE LOW OUTPUT FOR ANS. BACK CONTROL
- T. TO PERF CONTROL RELAY
- U. AVTIVE HIGH CLR.
- V. TO #12 THIS CONNECTOR TO INTERFACE "S" TO MEMORY BOARD "B"

COMPONENT SIDE

- 1. NOT USED
- 2. TO DECODE #16
- 3. TO #7 THIS CONNECTOR (2 CONN)
- 4. TO #8 THIS CONNECTOR (2CONN)
- 5. TO "F" THIS CONNECTOR (2CONN)
- 6. TO MSG. INDICATOR CLR SWITCH
- 7. TO DECODE BOARD "L"
- 8. TO DECODE BOARD "M"
- 9. TO CW ID START (HIGH FOR START)
- 10. TO RF TRANSMITTER TURN ON
- 11. NOT USED
- 12. TO "V" THIS CONNECTOR
- 13. NOT USED
- 14. FOR TU STAND BY AND AUTOSTART FORCE ON
- 15. TO ANSWER BACK RELAY DRIVEN ANSWER BACK CONTROL
- 16. TO TD FORCE ON SWITCH S4
- 17. TO DECODE BOARD "P"
- 18. TO PERF FORCE ON SWITCH S6.

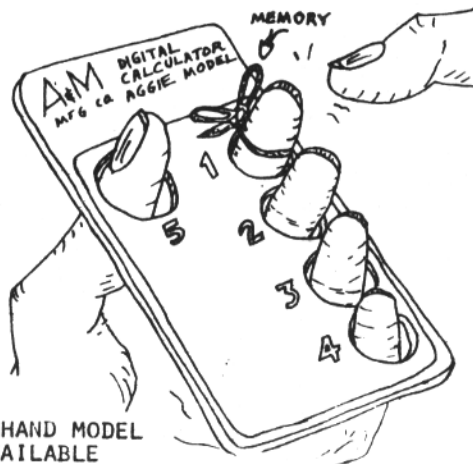
EDGE CONNECTOR CONNECTIONS FOR SUPPLY

FOIL SIDE

1. TO CHASSIE GROUND
- 2, -12 VDC
3. TO CHASSIE GROUND
4. INTERNALLY TIED TO #3
5. TO LED ON FRONT PANEL TO INDICATE POWER ON

6. TO CHASSIE GROUND
7. SERIES PASS CONNECTION 9 see schematic)
8. NO CONNECTION
9. PLUS 12 VOLTS DC
10. SERIES PASS CONNECTION (see schematic)
11. SERIES PASS CONNECTION (see schematic)
12. PLUS 5 VDC

13. TIED INTERNALLY TO #12
14. TO OPTIONAL CURRENT LIMITING RESISTOR FOR OFF BOARD MOUNTING
15. TO OPTIONAL CURRENT LIMITING RESISTOR AND UNREG. PLUS V DC
16. TO NEGATIVE V DC
17. AC IN
18. AC IN



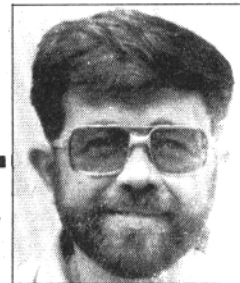
LEFT HAND MODEL
AVAILABLE

SEND CHECK OR MONEY ORDER TO: U.R. OFFE,
POST OFFICE BOX ZERO-ZERO, AUSTIN, TEXAS,
JUST A DOLLAR-TWO NINETY EIGHT.

RTTY-DX

SKIP PRINSEN WB6CYA

3611 Merrimac, San Diego, Calif. 92117



Greetings to All... this weekend the Volta contest should begin full swing. My thoughts are with everyone but the Navy must come first so have to spend most of my time on duty at the base this weekend. I hope to spend some time on the air Sunday during the day if all goes well.

The DARC-WAE started off rather slowly I worked TF31RA early in the contest and worked very little outside of the usual U.S. and Canadian stations. I printed 7X4MD but he was very weak here on this coast. During the last few minutes of the test 9G1JZ came through in fine style with an excellent signal.

From John W3KV the DARC-WAE contest took place under quite good conditions especially on 15 and 10, on 10 in particular the openings to Europe were very good and it would pay to keep looking into this band from time to time as the possibilities for DX are excellent with low power and a modest antenna. In the contest all continents were represented particularly Africa with EA81Y quite active and 7X4MD giving out numbers to all that asked. Rene, DL2XP/4X, made a remarkable showing from Israel just for the contest. The biggest pile-ups had to be for Bully, 9G1JZ, in Ghana and for a new comber he certainly handled the mob quite well.

Random Notes -

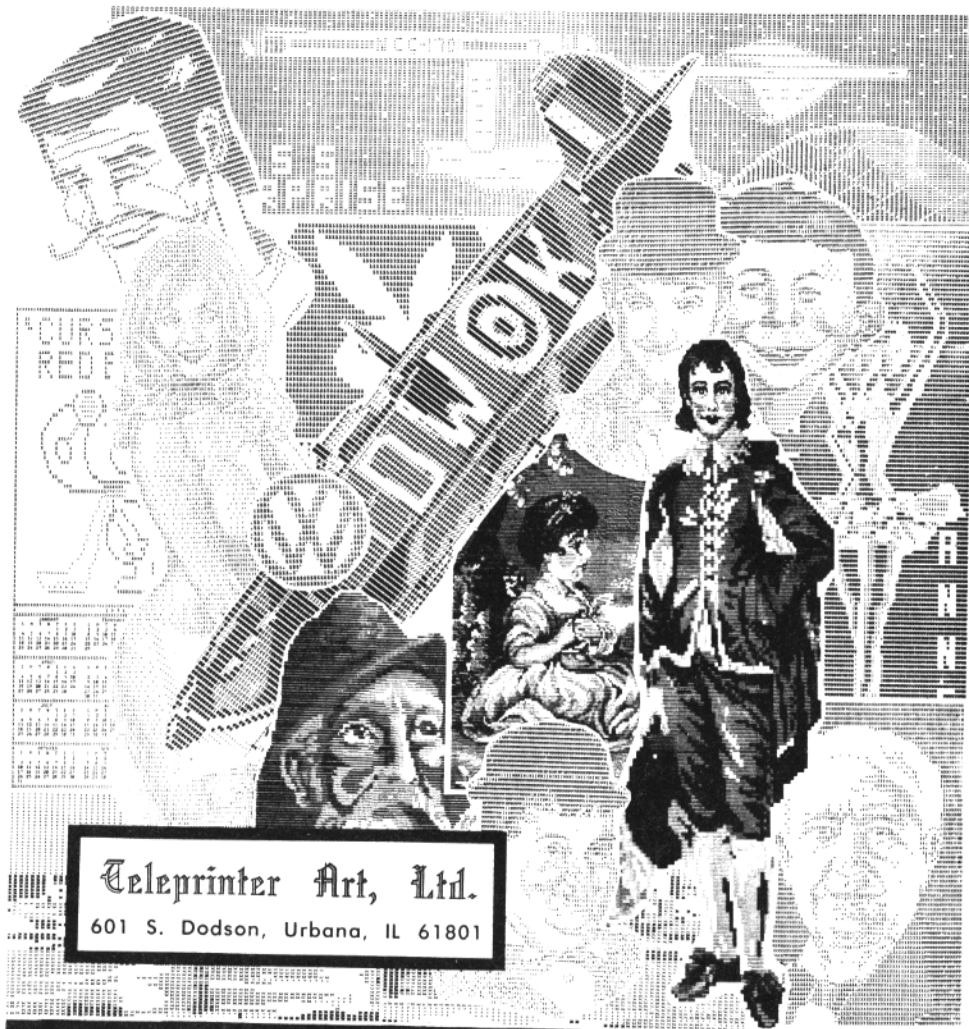
New Country EA6CK showed up before the WAE contest but the QRM scared him away. He is on 50 band and has been on from time to time. ONSBX was his first QSO. A good

catch from zone 1 is Frank VE8JW, Watson Lake, in the Yukon.

Early in November VK0KH was active from Maquarie Island which is some distance below New Zealand and quite close to Antarctica and counts as a new country. Unfortunately we understand that they have since closed down. 9M2CR comes into the East Coast from time to time at around 1400-1500Z. They tell us that YB0ACB has been QRV from Indonesia with a very narrow shift. Sid A4XGB is active from SALALAH, Sultanate of Oman and A4XFV is also on from Muskat. GM4BVD a rare catch from Scotland. G4AFS, G4CVZ put good sigs into USA. UK3DBG, UK3ACR from the USSR. UK2BAB from Lithuania. OH6AA, OF4RH, OH1AD, OH2TO, OH2HN all active from Finland. VP2SX again active from St. Vincent at around the time of the WAE Contest. YV7DU and YV5GU in Venezuela.

from N6LQ, Ernest, reports he is working with HI8SDA to fill in the blank that HI8XDF left behind. He has built up a DT600 and is ready for shipment as soon as he can find a machine preferably on the East Coast since he quite often travels to New York and Miami.

I have received several questions on certificates that have been recently won. If you have not received yours yet please drop me a line and I will either get up another one or try and locate your old one.



ASCII

BAUDOT

NOW WE HAVE BOTH !

73 wide max. - Chad tape (no lids)

Postpaid in USA - elsewhere add 10%

Send me a catalog: 5-level 8-level

5-level (BAUDOT) Intro-Pack, 10 pix, \$6

8-level (ASCII) Intro-Pack, 8 pix, \$10

Please read the NEW rules pertaining to the 1978 BARTG contest being held 0200 GMT Saturday, March 25th until 0200GMT Monday, March 27, 1978. There are some new rule changes from previous years.

W5VJP, Bob, worked YB0ACB warren in Jakarata, Indonesia who reports using an FTi0i barefoot into a TH6DX. No mention was made as to what type of TTY gear was being used.

QSL info is Warren Gough
P.P. Box 2282

Jakarta, Indonesia

K6WZ, Carl, had a QSO with Syd VK2SG who brought some good DX news. Ken, VK0KH is QRV on Macquaries Island daily from 0830 to 1030Z.

I recently received a nice letter from Raymond, 3A2FB who uses the Hal DKB2OIO, RVDI005 with a German Minix by Richter model MSK!O. In the near future I hope to have a very nice picture that he sent to me printed here in the Journal.

Anyone with pictures of themselves and or their stations please feel free to send them in for possible printing.

W3QCL, John, worked TU2GL, Elyane in Bouake Ivory Coast. She (an YL guys!!) just got on RTTY the 22nd of November with at TR4 siemens printer and a TH3MK which puts in a fine signal to the USA. She requests that her QSL's go via F6CBC.

W.A.C. awards this month go to Ted Double under his SWL of BRS 18456 all on 14 MHZ. Award #23 also WAC all on 14 MHT goes to Eric Yeomanson G3IIR with award #24 BARTG SPRING RTTY CONTEST 1978 when: 0200 GMT Saturday, march 25th until 0200 GMT Monday, March 1978.

The total contest period is 48 hours but not more than 30 hours of operation is permitted. Times spent in listening count as operating time. The 18 hour non-operating period can be taken at any time during the contest, but off periods may not be less than 3 hours at a time. Times on and off the air must be summarized on the log and score sheets.

when: 0200 GMT Saturday, March ON4BX

who: there will be separate categories for single operators, multi operator stations and short wave listeners.

Bands: 3.5, 7.0, 14.0, 21.0 and 28.0MHZ amateurs bands.

Stations: Stations may not be contacted more than once on any one band, but additional contacts may be made with the same station if a different band is used.

Country Status: ARRL Countries list and in addition each W/K, VE/VO and VK call area will be counted as a separate country. (But W/K, VE/VO and VK counted only once for QCA purposes.

Messages: Messages exchanged will consist of:

- a. time GMT this must consist of a full 4 figure group. The use of the expression "same" or "same as yours" will not be acceptable.
- b. RST and message number. The message number must consist of a 3 figure group starting with 001 for the first contact made.

Points:

- a. all two way RTTY contacts with stations within ones own country will earn two points.
- b. all two way RTTY contacts with stations outside one's own country will earn ten points.
- c. All stations will receive a bonus of 200 points per country worked in-

cluding their own. NOTE: Any one country may be counted again if worked on another band but continents are counted only once. d. NOTE: Proof of contact will be required in cases where station worked does not appear on any other contest logs received or the station worked does not submit a check log.

Scoring

- Two way exchange points times total countries worked.
- total country points times 200 times number of continents worked.
- Add (a) and (b) together to obtain your final score.

Sample Score

Exchange Points (302) x countries (10) = 3020.

Country Points (10) x 200 x continents (3) = 6000.

(a) and (b) added together to give a score of 9020.

Logs and Score Sheets:

Use one sheet (s) for each Band indicate all rest periods. Logs to contain date, time GMT, call sign of station worked, RST report and message number as sent, RST report and message number as received, exchange points claimed, the summary sheet should show the scoring, the times off the air and in the case of multi operator stations the names and call signs of all operators involved. **ALL LOGS MUST BE RECEIVED BY MAY 31st 1978 IN**

ORDER TO QUALIFY.

Send your contest log or check log to:

Ted Double G8CDW

89 Linden Gardens

Enfield,

middlesex,

England, FN1 4DX

The judges decision will be final and no correspondence can be entered into in

the rules for the contest for 1978.

- Inclusion of VK Call areas as separate countries.
- Proof of contact as under point (d).
- Summary sheets for multi operator stations to show names and call signs of all operations.

respect of incorrect or late entries and all logs will remain the property of the British Amateur Radio Teleprinter Group.

Certificates will be awarded to:

/the leading stations in each of the three classes, the top stations in each continent and each W/K, VE/VO, VK call area. The final positions in the results table will be valid for entry in the "world champion of RTTY" championship.

ADDITIONAL NOTES;

a. If a contestant manages to contact 25 or more different countries on two way RTTY during the contest, a claim may be made for the QUARTER CENTURY AWARD issued by the British Amateur Radio Teleprinter Group and for which a charge of \$3 U.S. or 15 IRC's is made. Make your claim at the same time as you send in your contest log. Holders of existing QCA Awards will automatically have any new countries added to their records.

b. If any contestant manages to contact stations on two way RTTY with all six continents and the BARTG contest manager receives a contest or check log from the operators in those six continents a claim may be made for the WAC award issued by the RTTY Journal. The necessary information will be sent on to the RTTY Journal who will issue the WAC award free of charge.

EXTRA NOTE;

There have been several changes in

CLASSIFIED ADS - - 30 words \$2.00. Additional Words 4 c ea.

Cash with Copy - Deadline 1st of Month.

MORE RTTY! ONLY HAM RADIO MAGAZINE consistently brings you more RTTY articles and better RTTY articles than any other general amateur magazine. You need RTTY Journal, but you need HAM RADIO also.
Ham Radio, Greenville, NH 03048.

HAVE FULL SET OF RTTY JOURNALS, Will duplicate any issue \$1.00 PP. Also duplicate of all 4 UART articles with large drawings. \$2.00 PP. U.S., Canada, Mexico. Other countries 25 cents extra. R. Wilson, WBØESF, 4011 Clearview Dr., Cedar Falls, IA. 50613.

EXPERT REPAIR WORK. Any Teletype Corp. model. Repair work \$15.00 plus parts no matter how long it takes. Rebuilding by estimate. Write K9WRL or phone (312) 392-2358, ask for Neil.

MODEL 28 ASR's - KSR's, Repuris - Keyboards, TD's - Printers, Parts - All priced for Hams. All in excellent condition. A.D.M. Communications, Inc., 1322 Industrial Avenue, Escondido, Ca. 92025. (714) 747-0374

AUTOMATIC CW ID UNITS. Programs up to 32 dots, dashes, or spaces, easily programmed. All on one board. Less 5V supply kit, \$13.95, wired and tested \$21.95 (your call must be supplied). Interface for above for ST5 or ST6, AFSK or FSK kit \$4.50, wired and tested \$5.75. Automatic 10 minute resettable timer for ID unit, kit \$8.95, wired and tested \$13.95. 5V 1A fully regulated short proof TTL supply with transformer and plug in or hard wired board, kit \$11.95, wired and tested \$18.95. SAVE on all four units, package of above reg. \$39.35, kits sale price \$35.99. Reg. wired and tested price \$60.60, sale price \$54.00. Cabinet for above, unpunched (Dozy E box) \$7.75 each. Add 75 cents shipping. NuData Electronics, 104 N. Emerson St., Mt. Prospect, IL 60056

YOU NEED INFORMATION ON COMMERCIAL RTTY STATIONS? News Agencies, Telex, Weather . . . on shortwave? I have up-to-date frequency, callsign, schedule, code lists. Write for details. Joerg Klingenfuss, Goethestrasse 14, D-7400 Tuebingen 1, West Germany.

MODEL 32 ASR MACHINES FOR SALE. Presently in Telex Service. Available after June 1. Machines located in Springfield, Massachusetts; Knoxville, Tennessee; Baton Rouge, Louisiana; Dyersburg, Tennessee; Grand Rapids, Michigan; Centralia, Illinois; Ardmore, Oklahoma; Salt Lake City, Utah; and Los Angeles, California. You pick up. For more information contact Conrad Jahries, WB7DHJ, (800) 453-5300 and in Utah (801) 484-8631, Interstate Contract Carrier, P.O. Box 748, Salt Lake City, Utah 84110.

ATTENTION FACSIMILE OPERATORS: a list with more than 200 frequencies of facsimile weather stations transmitting on SW is airmailed to you for \$3.00 or 10 IRC. It includes frequency, call sign, name, drum speed and cooperation index of each station. Write to Joerg Klingenfuss, Goethestrasse 14, D-7400 Tuebingen 1, West Germany.

QSL's, CATALOG 30 CENTS. TELETYPE PAPER single sheet rolls 12, 4 1/2 inch rolls per case white, \$25.00 per case plus shipping (case wt. 36 lbs.) N & S Print, P.O. Box 11184, Phoenix, Ariz. 85061.

NEWS-NEWS-NEWS-Amateur Radio's News-paper, "Worldradio". Trial subscription - Two issues for one dollar. "Worldradio" 2509-F Donner Way, Sacramento, Calif. 95818

TELETYPEWRITER PARTS: Gears, manuals, tools, paper, tape, Mod. kits, Gear shifts, ribbons, cranks, keytops, pallets, toroids, SASE for list. Typetronics, Box 8873, Ft. Lauderdale, FL. 33310. Buy unused parts, late machines.

KIM OWNERS - Add 4K to your KIM - complete instructions to add a commercial low cost (under \$90) 4K memory board to your KIM-1. No hardware additions (except connectors) or board cutting required. Price - \$10.00. The Bit Stop, P.O. Box 973J, Mobile, AL 36601.

MODEL 28 CONSOLES, Ro's - \$135, KSR's - \$165, ASR's - \$325, with modems add \$50. Loads of 15's and 19's. Goodman, 5454 South Shore Drive, Chicago, IL 60615 (312-752-1000). Phone anytime.

SALE: BLACK NYLON RIBBONS for all your Teletype machines \$6.75 a dozen, Red and Black Nylon ribbons dual spool \$1.50 each or \$12.00 dozen, Roll paper white 5" diameter \$2.50 roll or case of 12 rolls \$19.50. Perforator Tape 11/16 inch wide by eight inch diameter. Box of 10 rolls \$4.90 or case of 40 rolls \$15.90. Black Nylon ribbons for Kleinschmidt \$1.50 each or dozen for \$10.75. Tuning Forks 96.19 VPS or 120 VPS \$2.50 each. Distortion test set type TDA-2 with Scope \$39.00. Also available Model 14, 15, 19, 28, 32, 33 machines. Send us a list of your Teletype requirements. All prices FOB Brooklyn, N.Y., Atlantic Surplus Sales Co., 3730 Nautilus Ave., Brooklyn, N.Y. 11224. Tel: (212) 372-0349.

SALE: FEMALE JACK PANELS containing 144 jacks to a 19 inch panel takes standard 1/4 inch plugs \$19.00, Mite Motor, type PD/82U 115 VAC 60 Cy Unused \$35.00. Kleinschmidt Allen wrench on 12" handle \$1.00. Quick Brown Fox Generator Tyne TS-2B \$39.00. Platen for Model 15 machines \$9.00. Model 15 Carriage return strap \$1.25. 2 copy roll paper (1 carbon) \$2.75 per roll or case of 12 rolls \$19.50. Machines, Parts, Gears, Manuals available - write us listing your needs. Atlantic Surplus Sales - 3730 Nautilus Ave. - Brooklyn, N.Y. 11224. (212) 372-0349.

35 KSR for computer hobbyist in excellent working condition \$700.00 ea. friction or sprocket, A.D.M. COMMUNICATIONS INC., 1322 Industrial Ave., Escondido, Ca. 92025. 714-747-0374.

TELETYPE MANUALS - Model 28ASR, 3-volume set. \$24.50 plus \$7.75 postage. Thousands of other manuals available for military surplus receivers, xmtrs, teletype, radar, test sets. Send \$1.50 (coin) for large 22-page list. S. Consalvo, W3IHD, 7218 Roanne Drive, Washington, DC 20021.

MINI-MANUALS, \$3.95 each postpaid - M15/19 Wiring Hints, Diagrams and schematics. CV89/URA8 FSK Converter data. TDA2 Stelma Distortion Analyzer, AN/SGC-1 AFSK Converter, conversion details, etc. Teletype Gear Guide. Schematic for CV57 FSK TU - \$1.20 postpaid. Technical Manuals, Teletype Equipment and Parts, Surplus Electronics. SASE for lists. Jim Cooper, W2BVE, POB 73, Paramus, NJ 07652.

VIDITYPE & PANASONIC 9' VTR MONITOR combination \$450.00 PPD. Beautiful visual display RTTY reception. Use with ANY TU. Also any standard TV set without modifications. All speeds. Perfect condition. Money back guarantee! Inquiries promptly answered. Claude Sweger, Box 1842, Ft Stockton, TX 79735. W5SHC.

FOR SALE: Drake TR22 and AA10 PA, \$140 CV 57/urr Tu, \$50. Hallicrafter receiver 59 with original speaker, make offer. W2GRN Tom Myers, 540 Maple Dr W., New Hyde Pk, N.Y. 11040. 516-354-5550

TELETYPE FOR SALE: Model 28ASR's, KSR's, typing reperfs, and TD's. New and used parts available including cabinets, tables, mod kits, gears and gear-shifts. Paper, ribbons and supplies. Some 8-level Model 33 and 35 equipment available. SEND SASE for complete list and prices. K9WJB Lawrence R. Pfleger, 2141 n. 52nd Street, Milwaukee, WI 53208.

FOR SALE □ Hal ST-6000 Demodulator/Keyer, in mint condition. Low tones (1275-1445, 1275-1700, 1275-2125) for 170, 425 and 850 shift. Rack mount, complete with accessory cables and manual, \$350.00 will ship UPS. W5JUM* 2309 Shady Creek Dr., Richardson, TX 75080, 214-231-2388.

BE INFORMED - Electronic junk mail, 1 year \$1.50 The Junk Box Fall Issue, \$1.50. Box 872, Peabody, Mass. 01960. NS-1A Demodulator. Board \$3.50; parts \$15.00; W/T \$24.95. All postpaid. SASE for info. Nat Stinnette Electronics, Tavares, FL 32778

There have been numerous letters from our subscribers and others requesting information on various aspects of RTTYing and advertised products. The JOURNAL STAFF will be more than pleased to answer these inquiries, if you will only enclose a pre-stamped and addressed envelope. It does make it so much easier on your STAFF.

DOVETRON TSR-200 teleprinter speed converter-signal regenerator is a 5" by 5" card designed as the digital heart of the MPC-1000CR terminal unit. May be simply interfaced to other tuss. Consists of programmable UART regenerator, dual crystal controlled clock and a CMOS bilateral steering section. Power requirements: 5/15 volts at 20 mils. Price \$99.50 postpaid. Add \$15.00 for front panel BCD speed switch and cable. DOVETRON, P.O. Box 267, South Pasadena, CA. 91030. 213-682-3705.

DOVETRON TBA-1000 BAUDOT-ASCII code translator permits an ASCII teleprinter (model 33,35,etc.) and the Heath H-9 video terminal to be used directly with any terminal unit on Baudot RTTY circuits. The TBA-1000 may also be used to interface a 5-level Baudot teleprinter directly to ASCII circuits, such as a microprocessor. When using an ASCII video terminal, hard-copy may be had simultaneously on a Baudot printer. In addition to signal regeneration, speed conversion and 192 characters of FIFO memory, direct keyboard control of the companion terminal unit and transmitter-receiver is also provided. Price: \$245.00 FOB. Delivery: November 1977. Complete specifications are available on request. DOVETRON, P.O. Box 267, 627 Fremont Avenue, South Pasadena, CA 91030. 213-682-3705.

DOVETRON STATION IDENTIFIER TID-100 may be programmed in Morse CW, Baudot or ASCII codes. Output speed is variable from 5 to 20 WPM (CW) and 60 to 100 WPM (Baudot/ASCII). Two LEDs indicate CLOCK RUNNING and CODED OUTPUT for easy visual verification of programmed code. Dual output: One drives FSK/AFSK line and the other may be used to drive front panel indicator. Mounts inside of Dovetron MPC Series terminal units. Requires 1 Ma at 12 volts. Price: \$39.95 postpaid. DOVETRON, P.O. Box 267, South Pasadena, CA 91030. 213-682-3705.

HAL DKB 2010 DUAL MODE keyboard with 128 character buffer memory. Excellent condition. \$350.00. Wayne, W8 GXB, (616) 772-9236, 263 South Division, Zeeland, MI 49464.

UT-4 BOARD. Full documentation. Extras include; Parallel data buffered outputs, transitional autostart, memory hold, two 3 speed 555 clocks TD control, MC1408L6 D-A Converter, signal output indicator and edge connection for easy servicing. Size 9 X 5-5/8 Inch. \$17.95 plus \$1.00 for shipping. Complete power supply dit for UT-4 using 78 & 79 type regulators with edge connector and transformer included. Kit \$31.50 NuData Electronics, 104 N. Emerson ST., Mt. Prospect IL 60056

FOR SALE: Robot Model 70A slow scan monitor \$300...Skip Prinsen WB6CYA 3611 Merrimac, San Diego, CA 92117

UT-4 BOARD. Full documentation. Extras include; parallel data buffered outputs, transitional autostart, memory hold two 3 speed 555 clocks TD control, MC1408L7 D-A converter, signal output indicator and edge connection for easy servicing. Size 9X5-5/8 inch... \$17.95 plus \$1.00 for shipping. Complete power supply kit for UT-4 using 78 & 79 type regulators with edge connector and transformer included. Kit \$31.50. NuData Electronics, 104 N. Emerson /st., Mt. Prospect, IL 60056. RTTY. UT4 P.C.B.'s available. providing for UART* FIFO's and XB 6 clocks. double sided 8 x 6 main board with power supply board. Drilled with printed legend. circuitry and description. \$37.50. Postage extra. Den Michaelson G3RDG. 40, the vale, London, N.W11 8SG. England. Telephone 01-455-8831

TELETYPE BARGAINS, Model 28 ASR's \$325.00, KSR's \$165.00, RO's \$135.00, all contained in consoles and ready to go. modems add \$50.00 per unit. ALSO TWX units Model 33's & 35's. Also have a few hundred 15's & 19's (all subject to prior sale) Quantity discounts. SASE for list. Goodman, 5454 South Shore Drive, Chicago, IL 60615. (312) 752-1000. Phone day or night.

WANTED Model 28's in bad condition. Need several model 28's for parts and and winter rebuilding projects. State condition and price, Gary Buda, WAØ NDN, 8212 Douglas Drive North, Brooklyn Park, MN 55443.

(Prom Programmed) * Keyboard output regenerated through the UART. * 60 Ma., constant current loop supply. * PRICE.....\$239.50 F.O.B. Factory. For more information, Write: INFO-TECH INC.* 2349 WELDON PARKWAY* ST. LOUIS* MO 63141 314-576-5489

UT-4 COMPONENTS. Update. MC-3408L D/A now \$3.25. No XB-6 crystals. See Nov 77 ad for others. Peter Bertelli, W6KS, 5262 Yost Place, San Diego, CA, 92109. 714-274-7060

SELLING OUT Everything Operational TU Model- TT/L2 - \$175, ASFK - AK1 - \$25, Model 14 type reperf-key board - \$50, Loop Power Supplies - \$25, Transmitter Distributors - \$25, Elect. Paper Winder - \$25, Model 19 W/Manuals - power supplies - \$110, Elect. Tape Winder - \$25, Scope - \$80, Model S-85 Hallicrafter - \$80, Telemetry Analyzer - \$50. Leslie Day - wa2JYO, 117-22 204 Street Queens N.Y. 11412 Call (212) 528-7977 - any day on am

PRINTED CIRCUIT BOARD drill bits! You can now get carbide printed circuit board drill bits for a reasonable price. 1/8" shank, approximately 1" long. Two sizes available; .047" (approx. #56 drill), and .030" (approx # 68-69 drill). \$1.25 each includes shipping. More sizes available soon. Inquire stating needs. Midnight engineering Group, P.O. Box 349, Galesburg, IL 61401

MODEL 28 equipment and parts: 28 ASR's as is, working condition \$650.00 each. 28 KSR's as is working condition \$400.00 each. RO's as is working condition \$200.00 each. Spare printers as is working condition \$80.00 each. LBXD transmitter distributor as is working condition complete \$50.00 each. Receive only typing reperforator self contained cherry condition \$400.00 each. Cabinet extenders, new \$20.00 each. Multiple RO/KSR cabinets as is \$100.00 each. Parts and part numbers available, - technical information etc., many 28 parts available.. 11/16 perforator tape \$1.00 per roll.

American Data Terminals, 15421 South Carmenita Rd., Santa Fe Springs, CA 90670 (213) 921-0529, Ask for Dave or Vince.

FOR SALE: Complete set of reprints of the RTTY JOURNAL. Volume #1 to date. These are in book form same as originals. Brand new mint condition, ideal for the person who wants to know all about RTTY. Price complete including shipping, \$125.00. Ralph H. Wilson, 4011 Clearview Drive, Cedar Falls, IA, 50613. WBØESF.

P2102 MICROPROCESSOR IKX1 memory chips tested good. \$1.00 each. Joe Young W6RLL, 16808 Goodvale Road, Canyon Country, CA 91351. (805) 251-2135.

ELECTROCOM SERIES 400 FREQUENCY SHIFT CONVERTERS, are now available to the amateur

Outstanding performance, high reliability and quality construction, for which Electrocom equipment has been known for more than 17 years, is maintained by conservative design and quality components throughout. The Model 400 contains continuously variable shift which is adjustable by a 10 turn front panel control. Shift is accurately displayed by an in-line 3 digit readout. A range switch selects high or low tone combinations allowing use on both SSB and AFSK systems. The Model 402 contains individual Mark and Space frequency controls. Matched filters, baud rate selection, and precision linear detectors provide optimum demodulation. Input frequencies over the range of 1000 to 3200 Hz. are accepted. Other features include autostart, mark-hold, antispacer, waveform symmetry corrections, solid state motor switching and adjustable bias correction circuitry. The loop supply is variable from 20 thru 60 mils. and maintains constant current over a wide range of loop resistance and line voltage. The 2 inch CRT tuning indicator/monitor contains automatic intensity control and blanking. Direct factory introductory price range \$690.00. FOR complete details and specifications write or call Electrocom Industries, 1105 N. Ironwood Drive, South Bend, Indiana 46615 219-232-2743..

ELECTROCOM TERMINAL UNITS
FSC-250 two units for sale 170/850 shift AFSK TK-100 4 units for sale
Switching panels and cables available
Write Frank Iversen WA6ZCQ 1312
Micheltorena - Los Angeles, CA 90026
for details.

SELL: R390 A, very good condition, \$350.00; URM 25D signal generator, \$135.00; TV-10/v tube tester, \$85; HP 120B scope, \$65; OS-8 scope, \$30; HP400B VTVM, \$25; microwave modules 144mhz to 432 mhz transmitter, new in sealed carton, List \$319.95, sell \$259.95; URM-32A freq meter, \$24.95; Drake R4B, mint, \$310.00; Steve KH6 IHP, 94-1084 Lumi St., Waipahu HI 96797

Teletype model TT-7/FG model 19 with reperforator less TD. Tabletops 60 WPM page printer checked out & working \$75 (also have model 28's RO & KsRs) W. F. Harmon 5628 10th Avenue So Birmingham AL 35222 (205) 592-0835

PRINTED CIRCUIT BOARDS: RTTY SELCAL with TTL logic. (73 Magazine, November 72) \$12.00. ST-5A-W/PS (2 boards) \$6.25. AK-1, \$4.25; CW ID'er (Feb 73, 73 Magazine) \$4.75. Logic probe (Dec. 74, 73 Magazine) \$1.00. Autostart RTTY encoder and decoder (Jan. 67, 73 Magazine) \$11.00. Synthesizer - 75-S Collins Rec. (Dec. 75, Ham Radio) 2 boards \$12.50. Instructions and parts list included. S.J. Zalewski, 29307 Red Cedar Drive, Flat Rock, MI 48134. (313) 782-9316.

CHEAP CW ID with our \$5.60 printed circuit board plus five dollars of parts. N.Y.S. residents add tax. Star-Kits, Box 209, Mt. Kisco, N.Y. 10549.

FOR SALE: Frequency shift converter FSC 250 with matching filter switch panel and TK 100 tone keyer. TK 100 on 170 shift. Filters in switching panel are 170-425-850. Price \$150.00 C.O.D. or will trade for good ham receiver. Example: HQ100, HQ 110, 2B or similar. Jack Eno, WB4DNU, Rt. 5, Swainsboro, GA 30401. (912) 237-8480.

FOR SALE: Mits SG-1900 Audio Sweep Generator ket. PCB partially assembled. Cost \$130. Sell for \$75. MXD triple-headed TD. Sync motor, 60 wpm gears, all 7.42 code \$25. FOB Bryan, Texas. Tim Swarthout, WA5QEG, P.O. Box 3692, Bryan, Texas 77801

MITE PARTS - Largest inventory in the World. Phone orders accepted, shipped COD. Also buy Klienschmidt & Teletype Corp. parts and Assy's. Philmar Electronics, P.O. BOX 70 Morrisonville, NY* 12962 518-561-3479

AUDIO FILTERS. Precisely tuned 88 mH. toroids plus 5 Hz. \$3.50 each postpaid. Specify freq. Set of three 22 mH. toroids tuned to make a bandpass filter centered on 2195 Hz. \$13.00 per set postpaid. Nat Stinnette Electronics, Tavares, FL 32778.

FOR SALE: 28KSR with 28 TD, reperf, HAL homebrew ST-6 with AK-1 AFSK, \$400 complete. Collins 32S-1 with heavy duty homebrew RTTY supply \$400. Drake 2B receiver, 2BQ multiplier, calibrator, speaker, \$160. WIBZT. Conant Road, Lincoln, MA -01773. John.

COMING ARTICLES

1. Continuously running CW ID'er.
2. LED RTTY TU
3. TIPS ON TUNING THE NS-1A.
4. AWARDS RTTY
5. POWER SUPPLY FOR VHF TRANCEIVERS
6. RF ATTENUATOR FOR VHF OPERATION.

The letters H, I, O, S, X and Z are exactly the same upside down

HAM RADIO Magazine

The no-nonsense state-of-the-art technical magazine. Dozens of exciting projects and an emphasis on quality un-matched by any other radio magazine. Subscribe now and see for yourself. 1 year ... \$12.00... 2 years....\$22.00 and 3 years\$30.00.
HAM RADIO Magazine,
Greenville, NH 03043



INFO-TECH MODEL 93 T.U. A full featured, economical, RTTY Demodulator-Keyer. Features: * Three-shift, Active Filter, demodulator. * L.E.D. Tuning indicators. * Limiter on/off selection. * Sense selection. * Regeneration on receive, using UART. * Auto-start * Three-shift, Function Generator derived, AFSK. * Built-in C.W.I.D. F(Prom Programmed)

For additional Information, Write Info-Tech, Inc. 2349 Weldon Parkway St. Louis, Mo. 63141

(314) 576-5489

More Economical RTTY



The ST-5000 from HAL

The HAL ST-5000 sets the pace for an economical demodulator/keyer for radio-teletype (RTTY). All the features you need for reception and transmission of HF and VHF RTTY are here.

The demodulator features a hard-limiting front end, active filter discriminator, and active detector circuitry for wide dynamic range. Autostart and motor control circuitry make for easy VHF and HF autostart operation.

Convenient front panel switches are provided for 850 and 170 Hz shift, normal or reverse sense, autostart on/off, print - line or local, and power on/off. 425 Hz press transmissions may also be copied with the ST-5000. High voltage 60 ma. loop output as well as low level RS-232 compatible output are provided by the demodulator.

The audio keyer section of the ST-5000 generates stable, phase-coherent audio tones. Transmission is a simple matter of applying these tones to your HF SSB or VHF FM transmitter.

The ST-5000 is housed in an attractive blue and beige cabinet and is backed by the HAL Communications one year warranty.

For complete specs on the HAL ST-5000, write or call HAL today.

\$275.00



HAL Communications Corp., Box 365, 807 E. Green St.
Urbana, Illinois 61801 • Telephone (217) 367-7373



A.D.M. Communications, Inc.

Teletype & Communications Equipment

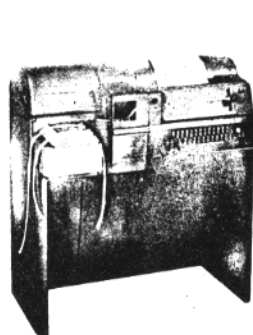
Doug Mathena

(714) 747-0374

1322 Industrial Ave. Escondido, California 92025

SALES and SERVICE New & Used Teletype Machines

COMPLETE REPAIR ■ RE-BUILDING
PARTS ■ PAPER ■ MOD. KITS
REPERFS ■ T.D.'s ■ RE-WINDERS



Model 28ASR



WA6PMA



Model 28KSR

DOUG

TELETYPE EQUIPMENT and supplies. Large assortment of machines on hand. New roll paper \$19.00 per case 4 1/2" or \$22.00 per case 5 ". 11/16 " tape \$14.00 per case of 40. Excellent ribbons 50¢ each. Equipment list for S.A.S.E. many parts on hand write for specific needs and prices. P.A. Anderson, 115 Bayken Road, Rochester, MI 48063 (313)692-3060

TELETYPE PAPER Single copy, \$1.00 per roll, have 60 rolls, you pay postage, or will swap for Gear shift mod 28, call 919-447-7536 or W.F. English 46 Alexander Rd Cherry Point, NC 28533

MODEL 28 KEYBOARD BASE* with motor. \$50, BRPE 2, \$10. Plus shipping. Tom, WA2ZHL Box 176, Wading River, N.Y. 11792, 516-929-6646

FOR SALE: Hzl RVD 1005 in excellent condition- \$295 or best offer. Hzl 128 EMO for DKB in mint condition \$55 Fred, WB9YNA, 606 W. Church ST., Champaign, ILL 61820

FOR SALE: Frequency counter pre-scalers, both models for 110 VAC - operation-PS-1, 300 Mhz Model \$35.00, PS-2,500 Mhz Model \$50.00. will trade for test equipment, Simpson 260's Bird 43 Slugs, Motorola HTparts or crystals or what ever you have to offer. Satisfaction Guarenteed, WB8JX, FRED L. Slaughter, 2073 Grange Street.,... Oregon, Ohio 43618

MODEL 28 LTK (keyboard punches 1 types on tape), very good condition. 175.00 plus shipping or trade for good quality solid state trigger scope. John Herring, PO Box 426, Weaver ville, CA 96093

HELP: Need Tech Manual and Schematics for An/FYC 3, Models I* II & III ARQ Duplex. F. Burt RFD 1 Box 152N Skillman, N.J. 08558 or 609-446-0721

TD PAPER 11/16' wide 10 rolls \$3.00 wt 14lbs add ups or pp W. F. Harmon 5628 10th avenue So Birmingham AL 35222. W4CDT



**Info-Tech Model 150
RTTY KEYBOARD**

Features 4 speeds with 3 shifts
AUTOMATIC CRLF with 72 Character Line, 64 Character Running Buffer
Three Outputs: Loop, AFSK Audio, TTL/Mos Serial
Price - \$289.00 F.O.B. St. Louis

For More Information Write

Info-Tech, Inc.
2349 Weldon Parkway
St. Louis, Mo. 63141

DOVETRON



MPC-1000C
Multipath-Diversity
Amateur Net: \$495.00

The MPC-1000C features MULTIPATH CORRECTION, IN-BAND DIVERSITY (single channel copy during deep selective fades) Operation and a PHASE-CONTINUOUS AFSK TONE KEYS. The Mark and Space channels are CONTINUOUSLY tuneable from 1200 to 3100 Hz. The internal RY GENERATOR and DUAL-MODE AUTOSTART (FSK or MARK) are standard, as are rear panel provisions for SIGNAL REGENERATION and SPEED CONVERSION peripherals.



MPC-1000CR
Signal Regeneration &
Up-Down Speed Conversion
Amateur Net: \$595.00

The MPC-1000CR combines all the features of the MPC-1000C with the TSR-200 SPEED CONVERTER-REGENERATOR. A front panel SIGNAL SPEED switch provides electronic "gear-shifting" between 60, 66, 75 and 100 WPM speeds. All incoming and outgoing signals are regenerated by a CMOS UART and a crystal-controlled DUAL-CLOCK to less than 0.5% bias distortion, providing an extremely low error-rate on weak and badly distorted signals.



MPC-1000R
Dual-Uart Regeneration,
200 Character Fifo
Memory & Word Correction.
Amateur Net: \$820.00

The MPC-1000R combines the features of the MPC-1000CR with the TSR-500 SPEED CONVERTER-REGENERATOR and offers 200 characters of FIFO MEMORY, a DUAL-UART REGENERATOR that also provides local copy during all PRELOAD-RECIRCULATE functions, a WORD CORRECTION circuit that permits an incorrect word to be erased from memory by depressing the local keyboard's BLANK key, VARIABLE CHARACTER RATE and automatic BLANK/LTRS DIDDLE. Character OVER-RUN during down-speed conversion is prevented by an automatic CHARACTER RATE OVER-RIDE and TEE DEE INHIBIT circuit. Three preset AFSK TONE/SHIFT combinations are selectable from the front panel.

The MPC-1000R (80 characters of memory), MPC-1000CA (Tri-tone AFSK), MPC-1000CRA (Tri-tone Regenerator) and MPC-1000CS (Crypto-Scrambler) are also available.

Your QSL will bring complete specifications, or call: 213-682-3705.



627 Fremont Ave.
(P. O. Box 267)
South Pasadena, Ca. 91030