

INSTRUCTIONS FOR INSTALLING MODIFICATION KITS 321761, 321762,  
AND 321763 TO CONVERT BELL SYSTEM STUNT BOXES AND TYPING UNITS  
FROM LP15RX/AR (28D) TO LP129RX/AUH (28AR) AND LP133RX/AKA (28BE)  
UNITS

MODIFICATION KIT	CONVERTS FROM		TO:	
	TELETYPE CODE	BELL CODE	TELETYPE CODE	BELL CODE
321761	LP15RX/AR	28D	LP129RX/AUH	28AR
321762	LP15RX/AR	28D	LP133RX/AKA	28BE
321763	Stunt Box AR (154944)		Stunt Box AUH (311440) AKA (320437)	

1. GENERAL

- 1.01 The 321761 and 321762 modification kits convert LP15 (28D) typing units to LP129 (28AR) and LP133 (28BE) typing units.
- 1.02 The 321763 modification kit converts AR (28D) stunt boxes to AUH (28AR) and AKA (28BE) stunt boxes.
- 1.03 The contents of the kits are shown on the check list found with each modification kit.
- 1.04 For parts ordering information, refer to Teletype Model 28 Parts Bulletin 1149B.

2. INSTALLATION

- 2.01 For conversion modification kits and associated typing units, refer to table below:

			28AR <u>LP129</u>	28BE <u>LP133</u>
157508	horizontal tab	(5864S)		X
163183	print suppression	(5946S)	X	X
164476	trans. hor. tab XD control	(5864S)		X
194324	paper-out alarm	(5888S)	X	X

- 2.02 Modification kit 152350 (keyboard lock) is to be removed from LP15 (28D) before installing the 321761 and 321762 modification kits. See Teletype Specification 50334S and Teletype Parts Bulletin 1149B.

SPECIFICATION 50492S

- 2.03 Figure 1 shows typical assembly of shift slide and parts in stunt box slot.

Note: Figures 2 and 3 each contain all the information required to make the conversion listed in their title. The conversion sheets are to be used as follows.

- 2.04 The parts in the remove column are either to be discarded or if followed by a number in brackets to be relocated in that number slot.
- 2.05 The parts in the add column are either new parts included in the modification kits or if followed by a number in parentheses taken from that number slot.
- 2.06 Appropriate springs and wicks will be used in the assembly of the stunt box as shown in Figure 1.
- 2.07 If no mention is made for removal of a part, it is to be left on the stunt box. The only exception to this is the mounting and wiring of the stunt box contacts. The contacts are to be assembled and wired to the stunt box as shown on the wiring diagram included with each kit. If the wiring diagram does not show the contact assembly used on the old stunt box, the contact assembly and cable should be discarded.

Note 1: To facilitate the stunt box conversion, it is suggested that the selector magnet leads and typing unit connector be disconnected from the typing unit and kept with the stunt box.

Note 2: When reinstalling the cable assemblies to the typing units and stunt boxes, tie the cable to the stunt box handle and retie the cable to the printer side frame.

- 2.08 DANGER! Function pawl clips are installed in the printer to hold function pawls away from the stripper blade in slots where function bars are missing. Damage will result if the printer is operated without each function pawl having a related function bar or clip.
- 2.09 LP129-LP133: Mount the 153570 suppression arm to the printer with the screws supplied for that purpose in the 163183 modification kit and the flat washers and lockwashers included in the 321761 and 321762 modification kits (refer to Teletype Specification 5946S).
- 2.10 The customer should retain the eight 4703 function bar springs furnished in a bag tied to the printer for future use.
- 2.11 When LP133RX/AKA is used, remove and discard the 157640 type pallet (;) and associated 157238 spring from the old style 199898 typebox arrangement "AL". Also retain the 151279 keytop (V-;) on the keyboard arrangement "BSE" since the horizontal tab code will never be originated from the keyboard or transmitter distributor.
- 2.12 The 155751 vinyl tubing supplied with the 321763 modification kit is to be used on alternate terminals of the typing unit connector plug (R).

3. ADJUSTMENTS AND LUBRICATION

3.01 For standard adjustments and lubrication procedure of related equipment, refer to Teletype Model 28 Bulletin 217B. (Bell System refer to standard information.)

3.02 Test the converted stunt boxes for proper function in accordance with their individual requirement.

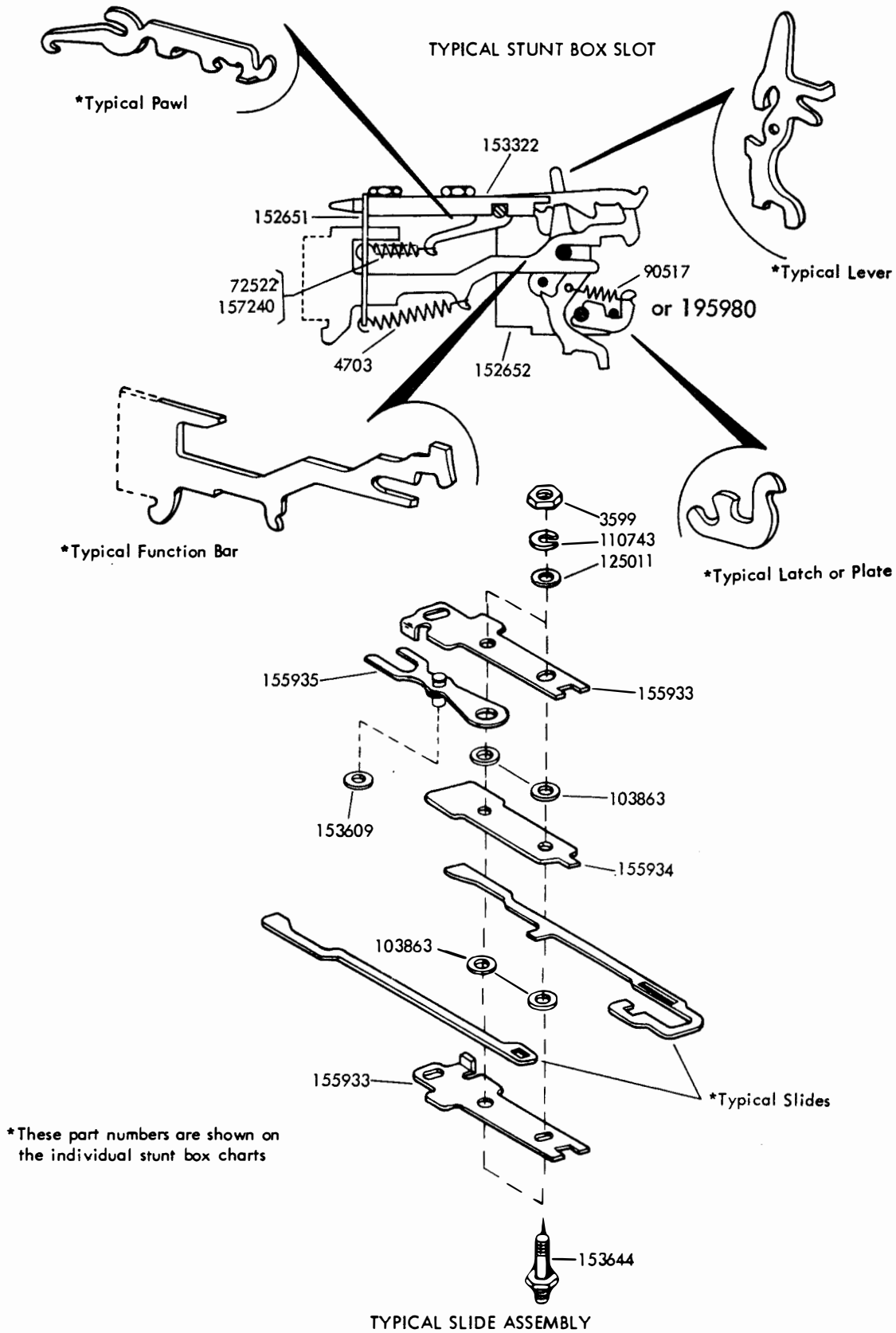


Figure 1 - Typical Assembly of Shift Slide and Parts in Stunt Box Slots.

CONVERSION CHART FOR 321763 MOD. KIT  
TO CONVERT AR STUNT BOX TO AUH STUNT BOX

[ ] Indicates Slot Relocated to

( ) Indicates Slot Taken From

SLOT	REMOVE			ADD		
	LEVER	Latch or Plate	BAR	LEVER	Latch or Plate	BAR
2						
3						
4						
5						
6						
7						
8						
9						
10						
11						
12						
13				152121(28)	154613(28)	
14				152298	154613	
15				152121(35)	154613(35)	
16				152298	154613	
17				152121	154613	
18				152298	154613	
19				152121	154613	
20				152298	154613	
21						
22	152641 (28)	152660 (28)	152669 (28)			
23						
24						
25						
26						
27						
28	152121 (13)	154613 (13)	152693	152641(22)	152660(22)	152669(22)
29	152641	152660	152673			
30	152641	152660	153437			
31						
32						
33						
34						
35	152121 (15)	154613 (15)	152669			
36	152642	152660	152669			
37						
38						
39						
40						
41						
42						

Notes:

1. See Fig. 1 for typical assembly of shift slides and parts in stunt box slots.
2. Use 152653 pawls in all occupied slots.
3. Use 157274 function pawl clips on slots 13, 14, 15, 16, 17, 18, 19, & 20. These slots are to be equipped in the field with 153440 function bars coded in accordance with customer requirements.
4. Assemble & wire the contacts to the stunt box per 7763WD which is included in the kit.
5. Replace screw stamped AR with screw stamped AUH.
6. Remove and discard clips 152127 used in slots 28, 35 of the AR stunt box.

CHART 2

CONVERSION CHART FOR 321763 MOD. KIT  
TO CONVERT AR STUNT BOX TO AKA STUNT BOX

[ ] Indicates relocated to

( ) Indicates Slot Taken From

SLOT	REMOVE			ADD		
	Lever	Latch or Plate	Bar	Lever	Latch or Plate	Bar
1						
2						
3						
4						
5						
6						
7						
8						
9				152121(28)	154613(28)	
10				152298	154613	
11				152121	154613	
12				152298	154613	
13				152121	154613	
14				152298	154613	
15				152121(35)	154613(35)	
16				152298	154613	
17				152642(36)	152660(36)	15 3 164UCV
18						
19						
20						
21						
22	152641 [28]	152660 [28]	152669 [28]			
23						
24						
25						
26						
27						
28	152121 [9]	154613 [9]	152693	152641(22)	152660(22)	152669(22)
29	152641	152660	152673			
30	152641	152660	153437			
31						
32						
33						
34						
35	152121 [5]	154613 [5]	152669			
36	152642 [7]	152660 [7]	152669			
37						
38						
39						
40						
41						
42						

Notes:

1. See Fig. 1 for typical assembly of shift slides and parts in stunt box slots.
2. Use 152653 pawls in all occupied slots.
3. Assemble and wire the contact assembly to the stunt box per 7763WD which is included in the kit.
4. Replace screw stamped AR with screw stamped AKA.
5. Use 157274 clip on slots 9, 10, 11, 12, 13, 14, 15, & 16. These slots are to be equipped in the field with 153440 function bars, coded to customer requirements.
6. Remove and discard clips 152127 used in slots 28, or 35 of the AR stunt box.