

INSTRUCTIONS FOR INSTALLING AND ADJUSTING
THE 111126 OR 136098 TAPE FEED WHEEL RELEASE MODIFICATION KIT
ON MODEL 14 TRANSMITTER DISTRIBUTOR
EQUIPPED WITH AN END-OF-TAPE STOP CONTACT

AUG 5 1957

1. GENERAL

a. The 111126 and 136098 modification kits facilitate the free movement of the tape so that the operator may make reruns or delete messages rapidly without having to remove the tape from the transmitter. A manual lever is provided to stop transmission by opening the end-of-tape stop contact and to free the feed roll by holding the feed pawl and the detent clear of the ratchet wheel. The 136098 modification kit is for use on transmitter distributor equipped with a magnetic switch for disengaging the tape feed mechanism.

b. The 111126 modification kit consists of:

2	1160	Screw 6-40 x 5/16 Fil.
2	2191	Washer, Lock
2	7002	Washer, Flat
2	8449	Spacer
2	80342	Screw 6-40 x 23/64 Hex.
1	81725	Stiffener
1	107669	Plate, Lid
1	107724	Pawl W/Pin, Tape Feed
1	107725	Screw 4-40 Shoulder
1	111627	Plate, Tape Guide
1	111628	Lid, Retaining
1	113378	Spring, Contact - Top
1	113379	Spring, Contact - Bottom
1	113387	Detent Assembly
1	113388	Screw 4-40 Shoulder
1	113390	Pin, Contact
1	113393	Stop
1	113394	Guide, Lever
1	114067	Top Plate Assembly

c. The 136098 modification kit differs from the 111126 kit in that a 138983 tape feed pawl is furnished in place of the 107724 tape feed pawl.

d. For part numbers referred to in the following text, but not included in the modification kits, refer to the Teletype Transmitter Distributor Parts Bulletin.

2. INSTALLATION (Figure 1)

Remove the transmitter top plate assembly from the unit to be modified, retaining the four 1160 screws and proceed as follows:

a. Transfer the 8491 wearing strip, 72069 shims and the two 1293 screws from the 8490 top plate to the 114067 top plate assembly.

b. Transfer the 125861 feed roll, two 125862 feed roll bearings, two 1162 screws, 97448 contact pin guide, two 1159 screws, two 3640 lock washers and the two 125011 washers from the 8490 top plate to the 114067 top plate assembly.

c. Remove the 125871 lid holder with dowels and assembled retaining lid from the top plate (retain the two 1159 screws) and proceed as follows:

(1) Transfer the 125873 latch, 112635 spring and 125278 shaft from the 97445 retaining lid to the 111628 retaining lid.

(2) Replace the 99230 lid plate with the 107669 lid plate, but retain the 1168 screws, 95954 screw plate and the 95953 shims. Discard the 99230 lid plate.

(3) Remove and discard the 97445 retaining lid but retain the 125872 shaft.

(4) Assemble the 111628 retaining lid on the 125871 lid holder using the 125872 shaft retained in paragraph 2.c.(3).

(5) Assemble the 125871 lid holder with dowels on the 114067 top plate assembly, using the two 1159 screws removed in paragraph 2.c.

d. Remove the 125867 detent bracket from the top plate and proceed as follows:

(1) Remove and discard the 125868 detent assembly and its 112624 shoulder screw, retain the bracket, the 112632 detent spring and the two 1168 mounting screws.

(2) Mount the 113387 detent assembly on the 125867 detent bracket using the 113388 shoulder screw furnished and the 112632 spring retained in paragraph 2.d.(1).

(3) Attach the 125867 detent to the 114067 top plate assembly using the two 1168 screws retained in paragraph 2.d.(1).

e. Remove and discard the 97468 tape guide plate, retain the two 1162 mounting screws. Discard the old top plate, but retain the four 1160 screws.

f. Mount the 111627 tape guide plate on the 114067 top plate assembly using the two 1162 screws retained in paragraph 2.e.

g. Remove and discard the 125833 lever guide and replace it with the 113394 lever guide.

h. Remove and discard the 97721 contact spring - top, 84892 stiffener and the 97720 contact spring - bottom, from the tape-out contact assembly and

replace them with the 113378 contact spring - top, 81725 stiffener, and the 113379 contact spring - bottom, as shown in Figure 1.

NOTE: If the transmitter distributor is not equipped with a 97922 stop plate, located behind the 97446 bracket, remount the 97446 bracket using the two 8449 spacers and 80342 screws furnished and 2191 lock washers from the present screws. If the transmitter distributor has a 97922 stop plate, discard the two 8449 spacers and 80342 screws furnished and remount the 97446 bracket with its present mounting screws and lock washers.

i. Remove and discard the tape feed pawl and its 112622 shoulder screw (retain the feed pawl spring) and replace it with the 107724 or 136098 feed pawl and 107725 shoulder screw using the feed pawl spring retained in this paragraph.

j. Install the 113393 stop using two 1160 screws, two 2191 lock washers and two 7002 washers as shown in Figure 1.

NOTE: Adjustments as indicated below should be made before replacing the top plate assembly. When replacing it the 113390 contact pin should be held in its 97448 guide, the feed pawl held so that it engages the feed wheel ratchet properly and care should be taken to insure that the insulator of the end-of-tape upper contact spring passes under the pin of the 113381 tape release lever. The four 1160 screws retained in paragraph 2.e. are to be used for mounting the top plate.

3. ADJUSTMENTS

The following sequence of adjustments should be followed after installation of the modification kits:

a. Standard adjustments to be made as specified in the standardized adjustment information. The top plate assembly should be removed.

- (1) TAPE FEED PAWL SPRING TENSION ADJUSTMENT
- (2) DETENT LEVER SPRING TENSION
- (3) FEED WHEEL SHAFT BEARINGS ADJUSTMENT
- (4) TAPE RETAINING LID LATCH WEARING STRIP SHIMS ADJUSTMENT
- (5) TAPE SPACE ADJUSTMENT
- (6) TAPE GUIDE ADJUSTMENT

b. The following are special adjustments and should be made with the top plate assembly removed:

- (1) TAPE RELEASE LEVER DETENT SPRING ADJUSTMENT

The detent should ride equal distances on each side of the detenting point of the spring. To adjust, loosen the detent spring mounting screws friction tight and position the detent spring. Tighten the mounting screws.

(2) DETENT SPRING BRACKET ADJUSTMENT

With the tape release lever in its feed wheel released position hook a 32 ounce scale over the upper end of the lever and pull at right angle to the handle of the lever. It should require at least 10 ounces to start the lever moving. To adjust, loosen the detent bracket mounting screws and position the bracket. Tighten the mounting screws.

(3) FEED LEVER DOWNSTOP ADJUSTMENT

Rotate the main shaft until the operating lever roller is resting on the high part of its cam. There should be from .010" to .015" clearance between the edge of the feed lever downstop and the bottom surface of the feed lever. To adjust, loosen the feed lever downstop mounting screws and position the downstop. Tighten the mounting screws.

NOTE: Replace the top plate assembly observing the precaution outlined in the NOTE following the installation instructions.

c. The following are standard adjustments to be made after replacing the top plate:

- (1) DETENT BRACKET ADJUSTMENT
- (2) TAPE RETAINING LID PLATE ADJUSTMENT
- (3) RETAINING LID LATCH SPRING TENSION
- (4) FEED LEVER ADJUSTING SCREW ADJUSTMENT
- (5) OPERATING LEVER ADJUSTING SCREW ADJUSTMENT
- (6) FEED LEVER UPSTOP ADJUSTMENT
- (7) END-OF-TAPE STOP CONTACT PIN GUIDE ADJUSTMENT
- (8) END-OF-TAPE STOP CONTACT SPRING ADJUSTMENT

d. The following is a special adjustment to be made after replacing the top plate assembly and should be made without tape in the unit:

- (1) TAPE RELEASE LEVER ECCENTRIC ADJUSTMENT

With the tape release lever in the position which allows the transmitter distributor to feed tape, there should be some clearance between the eccentric and the top surface of the insulator on the lower contact spring. There should also be some clearance between the bottom surface of

the insulator on the upper contact spring when the end-of-tape stop pin is flush with the bottom of the tape guide channel. To adjust, loosen the eccentric mounting screw and position the eccentric. Tighten the mounting screw.

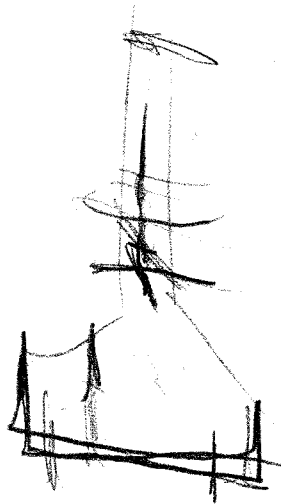
4. LUBRICATION

One or two drops of oil at each of the places indicated will be sufficient. Use oil for lubrication at all the places listed except where the use of grease is specified.

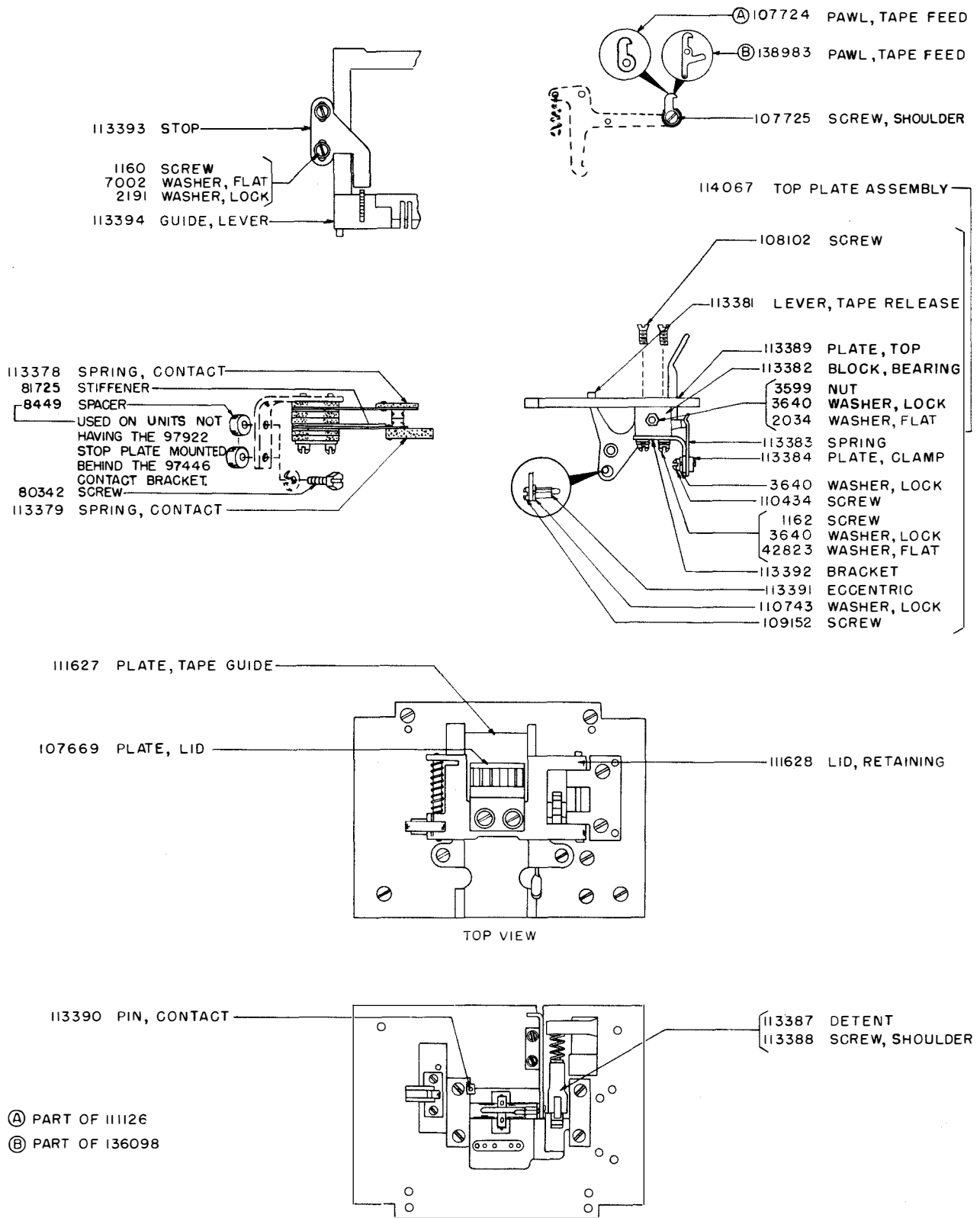
- a. Tape release lever bearing.
- b. Tape feed pawl pin extension.
- c. Release lever detent spring - apply thin film of grease to point of contact.
- d. All other parts should be lubricated as specified in the standardized lubrication information.

CAUTION: Do not lubricate end-of-tape stop pin or pin guide.

* * *







111126 MODIFICATION KIT TO PROVIDE TAPE FEED WHEEL RELEASE
136098 MODIFICATION KIT TO PROVIDE TAPE FEED WHEEL RELEASE

FIGURE 1

