

INSTRUCTIONS FOR INSTALLING THE 97321 OR 106986 MODIFICATION
 KIT ON A MODEL 14 TYPING REPERFORATOR EQUIPPED WITH HOLDING
 MAGNET SELECTOR TO PROVIDE A TAPE FEED-OUT MAGNET

1. GENERAL

a. The 97321 or 106987 Modification Kit is for use only on typing reperforators equipped with a 95471 Manual Tape Feed-Out Lever and 97293 or 123863 Bracket. When assembled on the Model 14 Typing Reperforator, it provides means for feeding tape through the reperforator punch block from a remote source by energizing the tape feed-out magnet. Since the selector armature of the reperforator is held energized during the idling period, tape which is fed out by the tape feed-out mechanism will have a series of LETTERS code combination perforations.

b. The 97321 Modification Kit does not include any cables or terminal blocks to facilitate connecting the magnet to an external circuit while the 106987 Modification Kit includes such components.

c. The Modification Kit consists of:

			97321	106987
	1	190M Magnet Assembly	X	X
	2	1028 Screw	X	X
	1	2191 Washer, Lock	X	X
	2	2438 Washer, Brass	X	X
	1	3598 Nut 6-40	X	X
	1	3640 Washer, Lock	X	X
	1	7002 Washer, Flat	X	X
151442 -	1	OR 8539 Screw	X	X
152893 -	1	OR 74613 Screw	X	X
	1	82492 Block Assembly, Terminal		X
	1	82619 Block Assembly, Terminal		X
	1	89080 Guard		X
	1	97362 Bracket	X	X
	1	97363 Yoke, Magnet	X	X
	1	97364 Armature	X	X
	1	97377 Spring Bracket	X	X
	1	102842 Cable Assembly		X
	1	103003 Cable Assembly		X
	1	110437 Spring	X	X
	1	125011 Washer	X	X
	*1	2054WD Diagram, Wiring		X

d. For part numbers referred to see Teletype Model 14 Typing Reperforator Parts Bulletin.

*Indicates change

Printed in U.S.A.

*Dave
Curtis*

- 2 -
5604S

2. INSTALLATION (Figures 1 and 2)

- a. Remove and discard the selector oil shield and base if the unit is so equipped.
- b. Units equipped with a series-parallel switch.

(1) Remove the two 74986 Screws from the 97293 Switch Bracket.

(2) Install the 97377 Spring Bracket on top of the 97362 Magnet Bracket (Hole closest to magnet coil) using one 74986 Screw through the "C" hole (see Figure 1) of the selector plate, threaded into the corresponding tapped hole of the 97293 Switch Bracket; the other 74986 Screw should be installed through the remaining magnet bracket mounting hole and the "D" hole (see Figure 1) of the selector plate into the corresponding tapped hole of the switch bracket.

- c. Units equipped with the 113702 or 123913 Series-Parallel Terminal Block Assembly.

(1) Remove the 8539 Screw and lock washer from hole "E" (see Figure 1). Insert this 8539 Screw through the 97377 Spring Bracket, the 97362 Magnet Bracket Mounting Hole (closest to coil) and through hole "C" (see Figure 1) of the selector plate with the 2191 Lock Washer and 3598 Nut.

(2) Remove the 8539 Screw and lock washer from hole "D" (see Figure 1) and use with the 7002 Washer to mount the magnet bracket above and the terminal block bracket below the selector plate in the same mounting hole "D".

d. Assemble the 97363 Magnet Yoke and the 190M Magnet Assembly on the 97362 Bracket using the 8539 Screw and 2191 Lock Washer.

e. Install the 97364 Armature Assembly by clamping it to the 95471 Lever, using either the 103634 Handle and 1206 Screw or the 97365 Stud, with the 3640 Lock Washer and 125011 Washer in one mounting hole, and the 74613 Screw, 3640 Lock Washer and 125011 Washer in the other mounting hole.

f. Hook one end of the 110437 Spring in the armature spring hole and the other end in the spring bracket.

- g. For the 106987 Modification Kit:

(1) Remove and discard the 8884 Terminal Block Assembly and transfer its connections to the corresponding positions on the 82619 Terminal Block Assembly. Solder the tinned end of the yellow wire of 102842 Cable Assembly to terminal No. 17 (second from front) on the 82619 Terminal Block Assembly and the brown wire to terminal No. 18 (front terminal). Connect the other ends of the yellow and brown wires of 102842 Cable Assembly to the 190M Magnet Assembly using the two 1028 Screws and the two 2438 Washers.

(2) The 106987 Modification Kit includes the parts necessary to convert a receiving only typing reperforator base for use with a typing reperforator unit which is equipped with the tape feed-out magnet. The following information should be disregarded if the base is already arranged for remote tape feed-out operations.

(a) Remove and discard the 7092 Terminal Block Assembly and replace it with the new 82492 Terminal Block Assembly. This may be done without breaking any soldered connections by removing the six slip connection springs from the old block and remounting them on the new block in the same order.

(b) Install the 103003 Cable Assembly in accordance with wiring diagram 2054WD. Connect the Y wire from connection clip 17 to terminal 35 and the BL wire from connection clip 18 to terminal 43.

(3) Mount the 89080 Guard on the front end of the 75431 Relay Bracket using the forward mounting screw of the relay bracket. The offset on the guard should extend downward.

3. ADJUSTMENTS

For adjusting procedure refer to standardized adjustment information for other than Bell System see Teletype Model 14 Typing Reperforator adjustment Bulletin 165B. Make the following standard adjustments:

- a. Magnet Coil and Yoke Alignment
- b. Armature Adjustments
- c. Spring Bracket Alignment
- d. Armature Spring Tension

*

*

*

113702 OR 123913
BLOCK (ASSEM.), TERMINAL

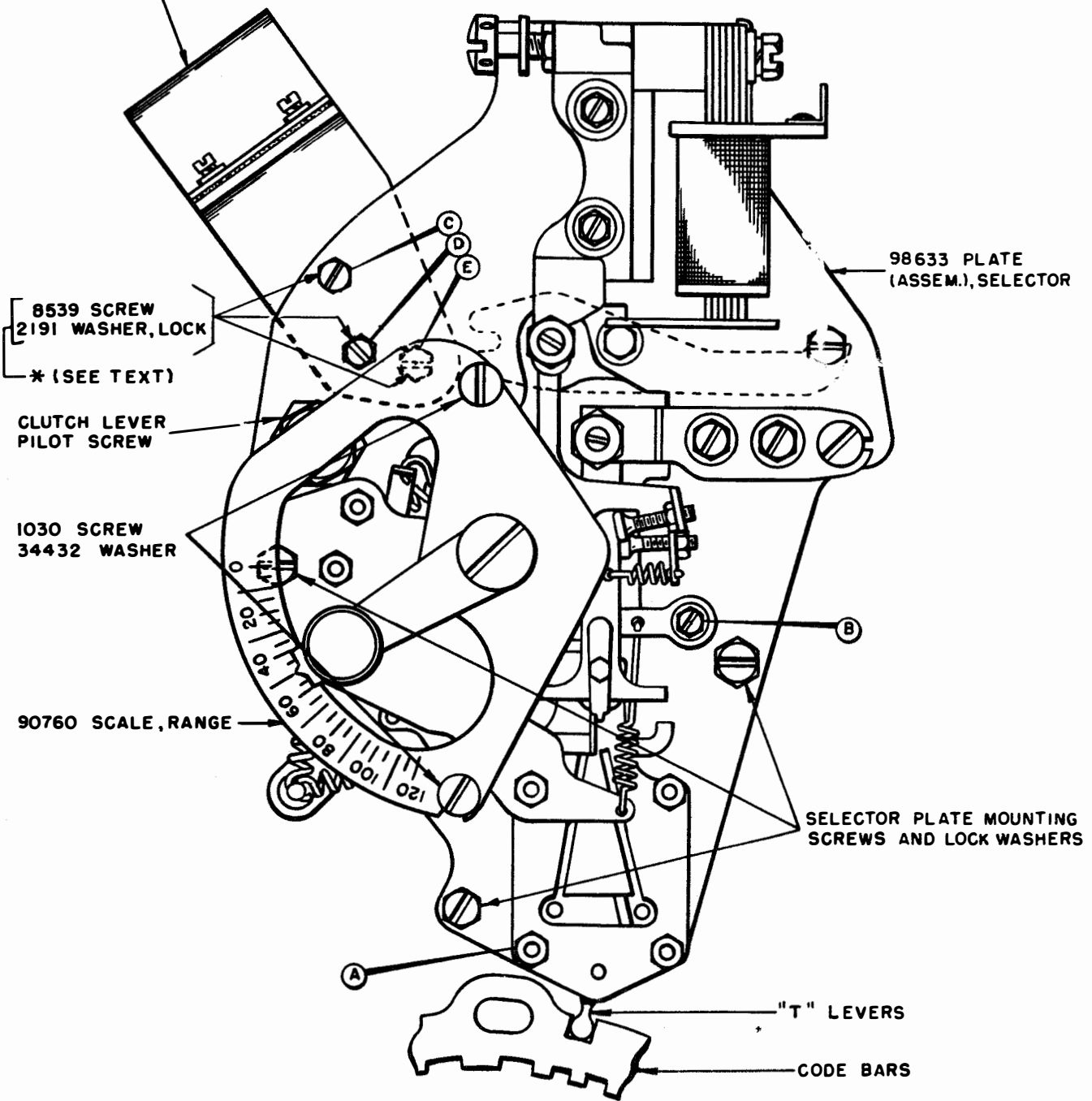


FIGURE 1

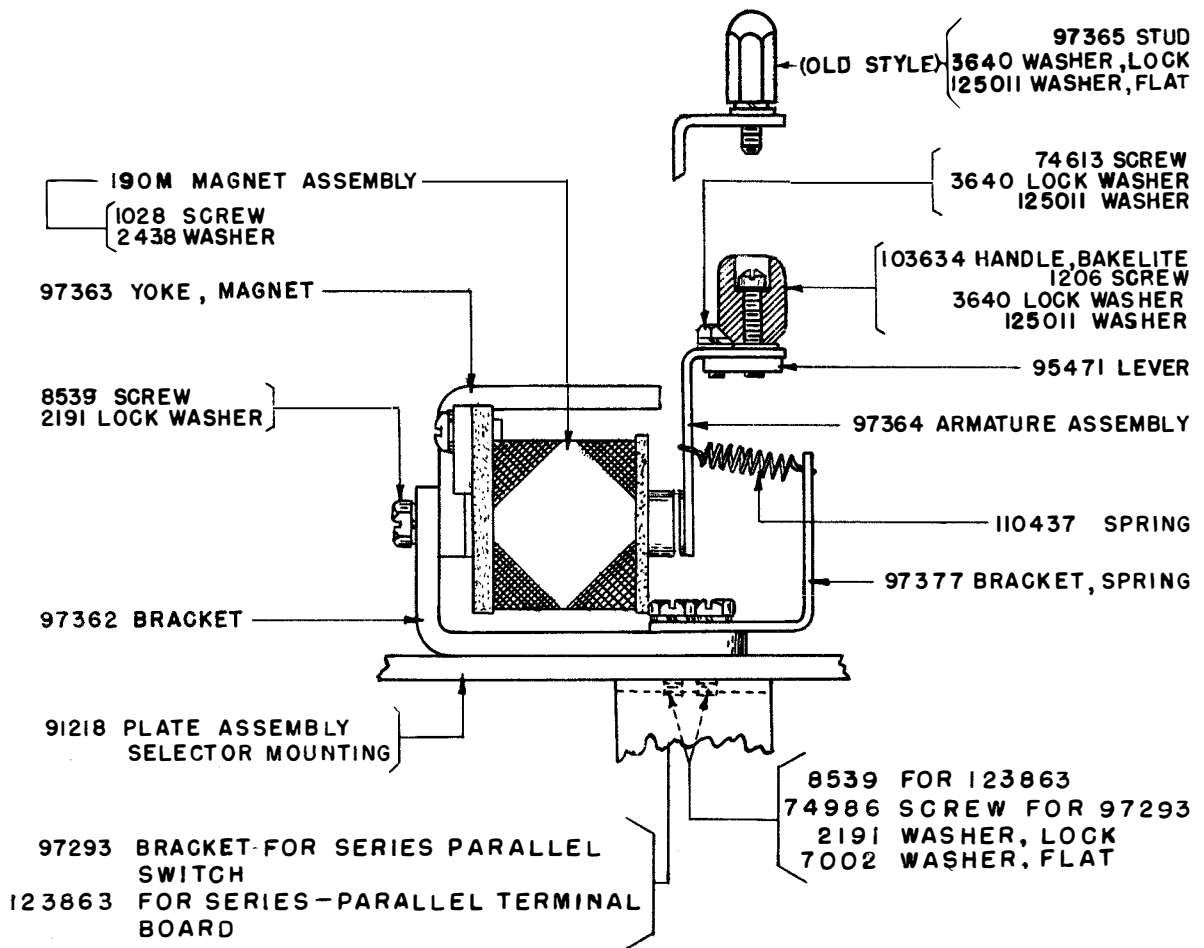


FIGURE 2

