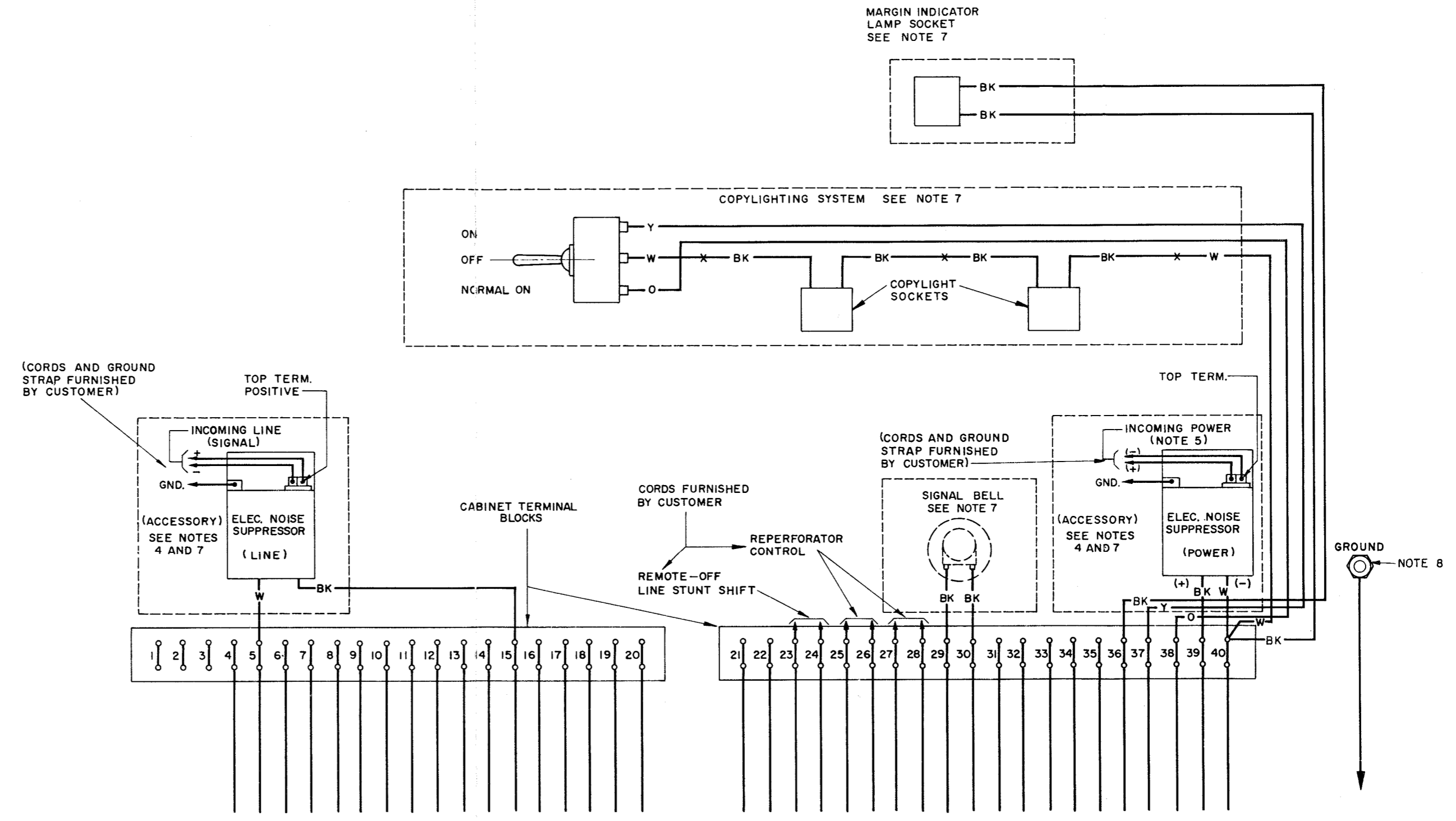


REVISIONS

ISSUE	DATE	AUTH. NO.
G	12-30-56	28-7216
H	12-5-57	28-8154
J	12-17-57	28-8195
K	3-25-59	28-10913
L	5-22-59	28-11141

- NO. NOTES**
- 1 COLOR CODE:
 BK — BLACK BL — BLUE
 W — WHITE Y — YELLOW
 R — RED BR — BROWN
 G — GREEN P — PURPLE
 O — ORANGE S — SLATE
- 2 —X DENOTES SPLICED, SOLDERED, AND TAPED WIRES.
- 3 COMPONENTS SHOWN DOTTED ARE ACCESSORIES TO CABINET.
- 4 USE POWER AND SIGNAL LINE INTERFERENCE SUPPRESSORS FOR INSTALLATIONS REQUIRING MINIMUM R.F. INTERFERENCE. FOR OTHER INSTALLATIONS, OMIT SUPPRESSORS AND CONNECT INPUTS DIRECTLY TO TERMINALS SHOWN.
- 5 CABINET POWER CIRCUIT WIRED FOR 115V. D.C. OPERATION. CONNECT GROUNDED SIDE OF INPUT POWER, OR NEGATIVE SIDE OF UNGROUNDED POWER TO TERMINAL C40 OR THROUGH THIS SIDE OF FILTER. POLARITIES SHOWN (+) AND (-) ARE FOR NEGATIVE GROUNDED POWER. THE ASSOCIATED ELECTRICAL SERVICE UNIT MUST BE WIRED FOR D.C. OPERATION.
 SELECT THE DESIRED OPERATING CONDITIONS FROM THE FOLLOWING TABLE AND MAKE CONNECTIONS AT THE CABINET TERMINAL BLOCKS WITH THE TWO 153483 STRAPS FURNISHED WITH THE 152624 A.C. TO D.C. ASSEMBLY:
 SIGNAL LINE CIRCUIT ACCESSORY OPERATION.
- | | OPERATES CONTINUOUSLY | OPERATES WITH POWER SWITCH | OPERATES WITH MOTOR CONTROL | |
|--------------|-------------------------------|----------------------------|-----------------------------|----------------------------|
| POWER SOURCE | NEGATIVE GROUND OR UNGROUNDED | C 21 - C 38
C 22 - C 40 | C 21 - C 35
C 22 - C 40 | C 21 - C 37
C 22 - C 40 |
| | POSITIVE GROUND | C 22 - C 38
C 21 - C 40 | C 22 - C 35
C 21 - C 40 | C 22 - C 37
C 21 - C 40 |
- SEE APPROPRIATE ELECTRICAL SERVICE UNIT SCHEMATIC WIRING DIAGRAM.
- 6 NECESSARY STRAP CONNECTIONS AT THE CABINET TERMINAL BLOCKS ARE SHOWN ON THE ASSOCIATED ELECTRICAL SERVICE UNIT WIRING DIAGRAM. SEE THE LESU7 ACCESSORY GROUP B.M. FOR THE DIAGRAM NUMBER.
- 7
- | ACCESSORY GROUP ASSIGNMENTS | | | | |
|-----------------------------|------------------|------------------|-------------|-------------------------|
| ACCESSORY GROUP NO. | COPYLIGHT SYSTEM | MARGIN IND. LAMP | SIGNAL BELL | ELEC. NOISE SUPPRESSORS |
| 130,150,240,241 | X | X | X | |
- 8 GROUND SCREW IS LOCATED AT REAR OF CABINET, ADJACENT TO RIGHT HINGE.



SEE APPROPRIATE ELECTRICAL SERVICE UNIT WIRING DIAGRAM (AS INDICATED ON THE LESU7 ACCESSORY GROUP B.M.)

FOR SCHEMATIC SEE ASSOCIATED LESU WD

ACTUAL WIRING DIAGRAM FOR MODEL 28 PRINTER CABINET LAC 203,204,205 ACCESSORY GROUPS 130,150,240,241 (FOR DC APPLICATION)

DATE: 4-20-54
 PD. FILE NO.: 2-30.65.156A
 DRAWN: N.K.G. CHKD. R.D.
 ENGD.: G.A.O. APPD.:

TELETYPE CORPORATION