

REVISIONS			
A	1-14-55	28-4814	
B	1-22-55	28-4921	
C	1-25-55	28-4869	
D	7-8-55	28-5583	
E	8-13-55	28-5607	
F	7-13-56	28-6816	

1. COLOR CODE:  
 BK-BLACK  
 W-WHITE  
 R-RED  
 G-GREEN  
 O-ORANGE  
 BL-BLUE  
 Y-YELLOW  
 BR-BROWN  
 P-PURPLE  
 S-SLATE

2. X DENOTES SPLICED, SOLDERED, AND TAPED WIRES.

7. ACCESSORY GROUP ASSIGNMENTS

ACCESS. GROUP NO.	COPYLIGHT SYSTEM	MARGIN IND. LAMP	SIGNAL BELL	ELEC. NOISE SUPPRESSORS
130, 137, 150	X	X	X	
148, 149, 194, 195	X	X	X	X

3. COMPONENTS SHOWN DOTTED ARE ACCESSORIES TO CABINET.

4. USE POWER AND SIGNAL LINE INTERFERENCE SUPPRESSORS FOR INSTALLATIONS REQUIRING MINIMUM R.F. INTERFERENCE. FOR OTHER INSTALLATIONS, OMIT SUPPRESSORS AND CONNECT INPUTS DIRECTLY TO TERMINALS SHOWN.

5. CABINET POWER CIRCUIT WIRED FOR 115 V. D.C. OPERATION. CONNECT GROUNDED SIDE OF INPUT POWER, OR NEGATIVE SIDE OF UNGROUNDED POWER TO TERMINAL C40 OR THROUGH THIS SIDE OF FILTER. POLARITIES SHOWN (+) AND (-) ARE FOR NEGATIVE GROUNDED POWER. THE ASSOCIATED ELECTRICAL SERVICE UNIT MUST BE WIRED FOR D.C. OPERATION.

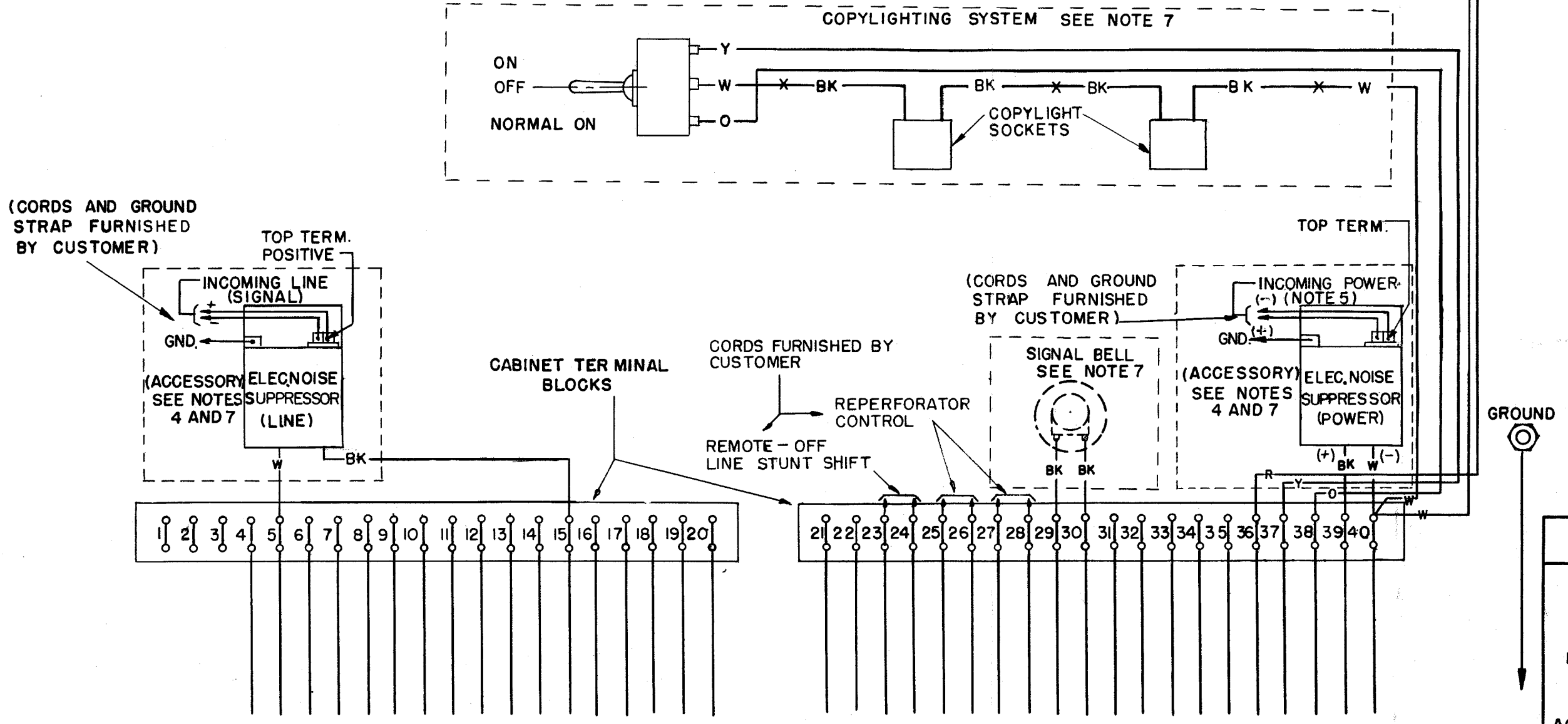
SELECT THE DESIRED OPERATING CONDITIONS FROM THE FOLLOWING TABLE AND MAKE CONNECTIONS AT THE CABINET TERMINAL BLOCKS WITH THE TWO 153483 STRAPS FURNISHED WITH THE 152624 A.C. TO D.C. ASSEMBLY:

SIGNAL LINE CIRCUIT ACCESSORY OPERATION.

	OPERATES CONTINUOUSLY	OPERATES WITH POWER SWITCH	OPERATES WITH MOTOR CONTROL
POWER SOURCE			
NEGATIVE GROUND OR UNGROUNDED	C 21 - C 38 C 22 - C 40	C 21 - C 35 C 22 - C 40	C 21 - C 37 C 22 - C 40
POSITIVE GROUND	C 22 - C 38 C 21 - C 40	C 22 - C 35 C 21 - C 40	C 22 - C 37 C 21 - C 40

SEE APPROPRIATE ELECTRICAL SERVICE UNIT SCHEMATIC WIRING DIAGRAM.

6. NECESSARY STRAP CONNECTIONS AT THE CABINET TERMINAL BLOCKS ARE SHOWN ON THE ASSOCIATED ELECTRICAL SERVICE UNIT WIRING DIAGRAM. SEE THE LESU7 ACCESSORY GROUP B.M. FOR THE DIAGRAM NUMBER.



SEE APPROPRIATE ELECTRICAL SERVICE UNIT WIRING DIAGRAM (AS INDICATED ON THE LESU7 ACCESSORY GROUP B.M.)

FOR SCHEMATIC SEE ASSOCIATED LESU WD.

**2876 WD**  
4-20-54

ACTUAL WIRING DIAGRAM FOR MODEL 28 PRINTER CABINET LAC 203, 204, 205

ACCESSORY GROUPS 130, 137, 148, 149, 150, 194, 195

DRAWN: N.K.G.	APPROVED: <i>[Signature]</i>
ENG'R'D: G.A.O.	
CHECKED: <i>[Signature]</i>	
FILE: 2-30.65.156A	

TELETYPE CORPORATION