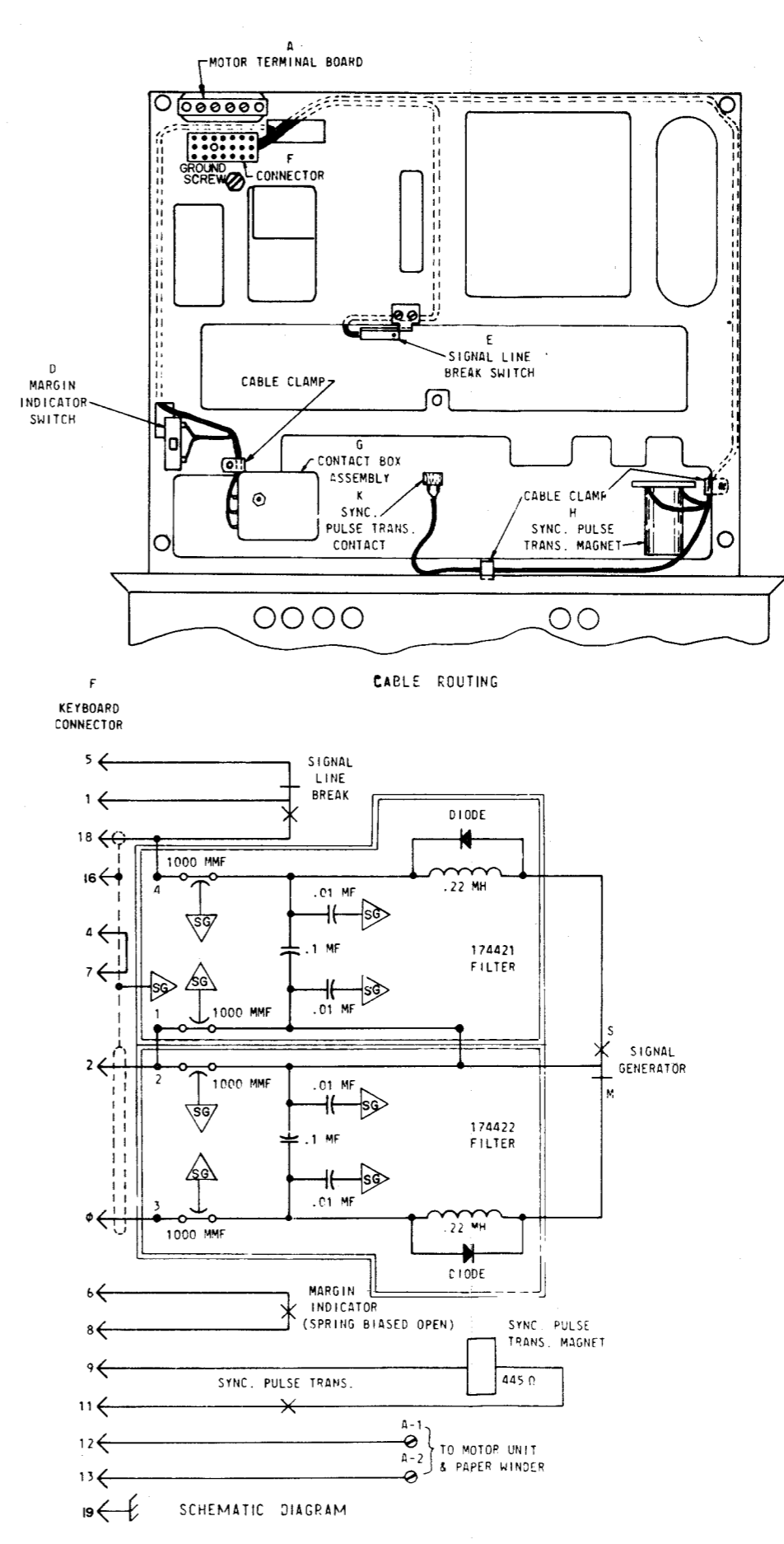
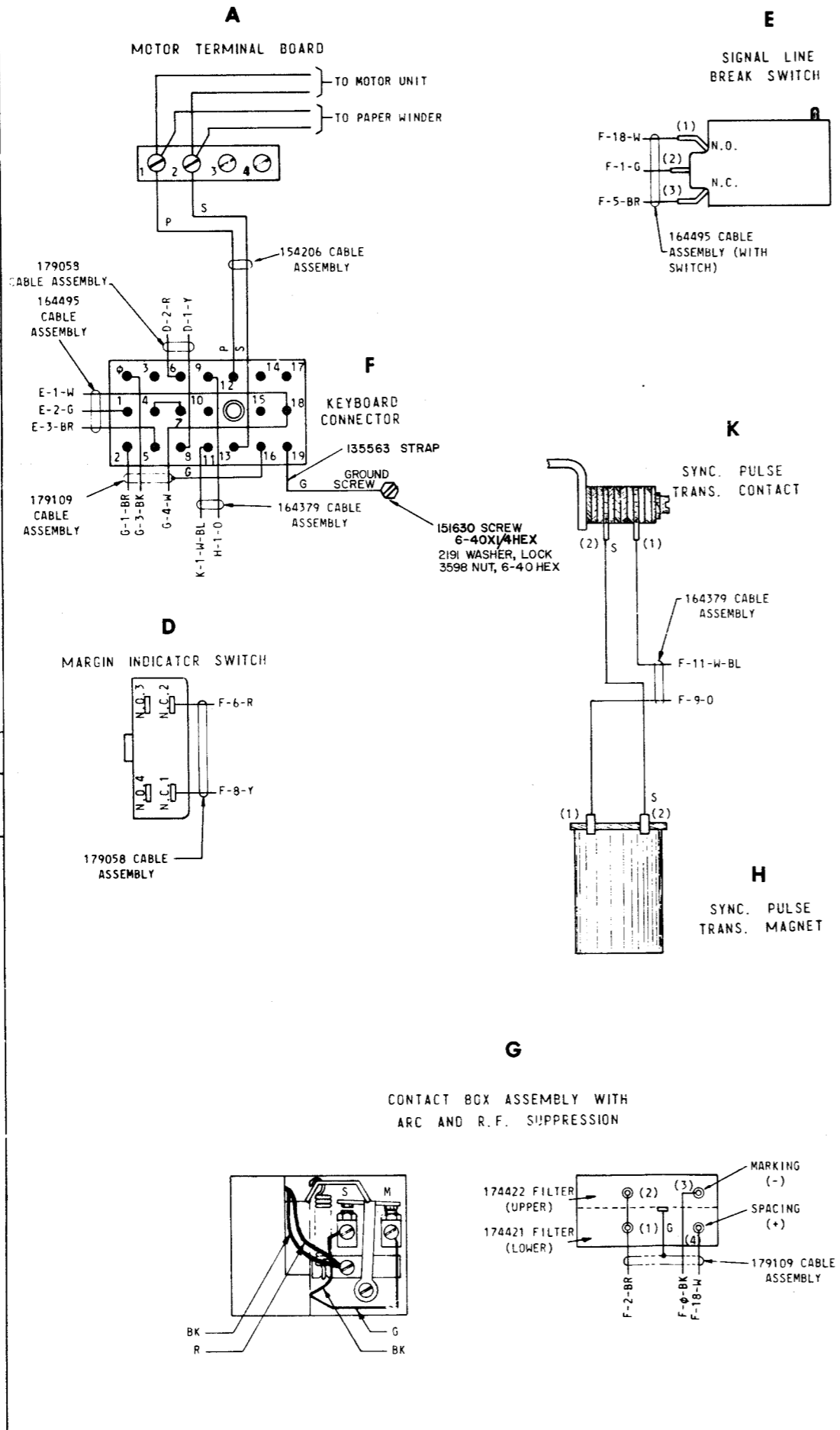


1. WIRING LEGEND:
 DISTANT TERMINATING AREA
 DISTANT TERMINATING DESIGNATION
 F-8-Y WIRE COLOR CODE
2. COLOR CODE:
 BK-BLACK P-PURPLE
 BL-BLUE R-RED
 BR-BROWN S-SLATE
 G-GREEN W-WHITE
 O-ORANGE Y-YELLOW
3. CONNECTOR VIEWED FROM SOLDER TERMINAL SIDE.
4. 154206, 179058 AND 179109 CABLE ASSEMBLIES ARE PART OF 179110 KEYBOARD CABLE ASSEMBLY.
5. FOR PROPER R.F. FILTERING, POLARITY OF FILTERS MUST BE MAINTAINED. FACTORY WIRING IS FOR:
 a. MARKING CONTACT - NEGATIVE (-)
 b. SPACING CONTACT - POSITIVE (+)
 TO REVERSE POLARITY SO THAT THE MARKING CONTACT IS POSITIVE (+) AND THE SPACING CONTACT IS NEGATIVE (-), MAKE THE FOLLOWING CHANGES WITHIN THE CONTACT BOX ASSEMBLY:
 a. MOVE THE BLACK LEAD ON THE SPACING CONTACT TERMINAL SCREW TO THE MARKING CONTACT TERMINAL SCREW.
 b. MOVE THE GREEN LEAD ON THE MARKING CONTACT TERMINAL SCREW TO THE SPACING CONTACT TERMINAL SCREW.
 c. INTERCHANGE THE BLACK AND WHITE LEADS FROM THE "F" CONNECTOR TO THE CONTACT BOX SO THAT THE BLACK LEAD NOW CONNECTS TO TERMINAL 4 AND THE WHITE LEAD CONNECTS TO TERMINAL 3.
6. ← MALE CONNECTOR TERMINAL
7. TERMINATING DESIGNATIONS IN PARENTHESIS, DO NOT APPEAR ON COMPONENT.



7155 WD

REVISIONS		
ISSUE	DATE	AUTH. NO.
1	2-5-65	16061-R
2	3-23-65	86787

ACTUAL AND SCHEMATIC WIRING DIAGRAM FOR MODEL 28 KEYBOARD LK52

APPROVALS

D AND R	E OF M
---------	--------

E-NUMBER

PROD. NO. 7155WD

DATE 6/17/64

P.D. FILE NO. 42-A2,654A

DRAWN P.P.P. CHKD. E.V.C.

ENGD. P.P.P. APPD. E.V.C.

TELETYPE CORPORATION

7155 WD