

A. C. GOVERNED MOTORS

103559 MOTOR UNIT 1800 R.P.M.  
(---103083 CABLE)

(2102 R.P.M.)  
(--- 77126 CABLE)  
(---87469 CABLE)

SYNCHRONOUS MOTOR.  
ARRGT. AJ, BX, DJ, HY, GV, HJ, HP

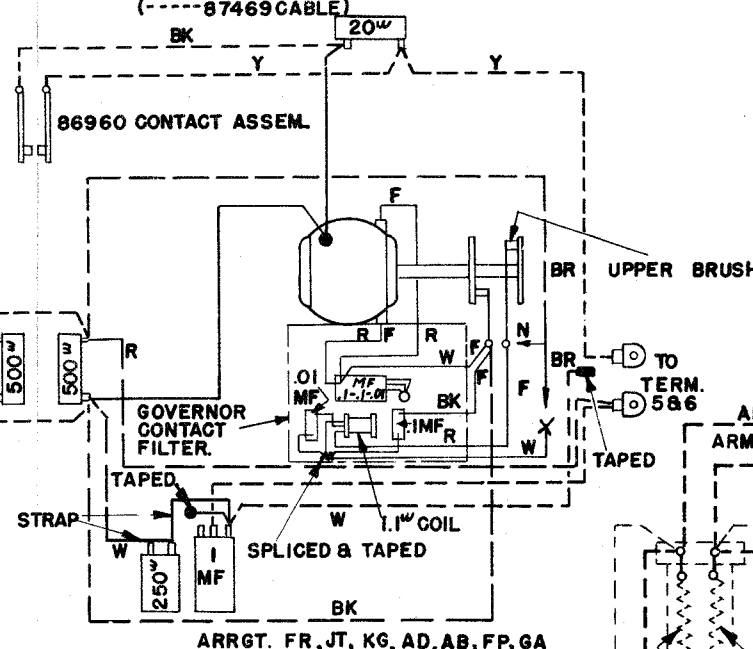
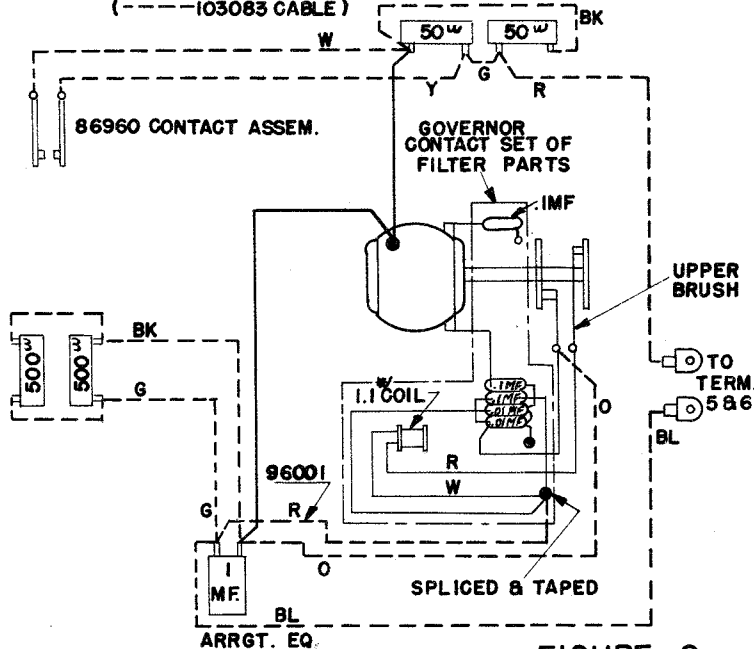
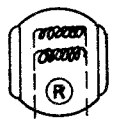
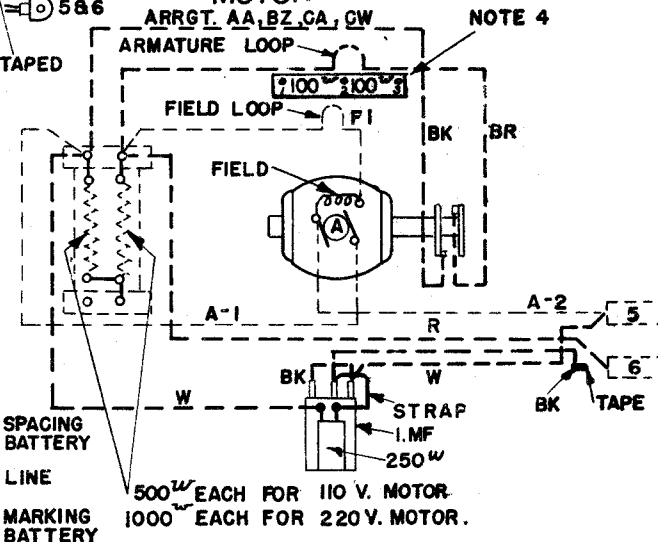


FIGURE 2

D.C. GOVERNED MOTOR  
ARRGT. AA, BZ, CA, CW



NOTE 4

LOCATION OF 86960 CONTACT ASSEM. OPERATED BY ARMATURE EXTENSION ARM

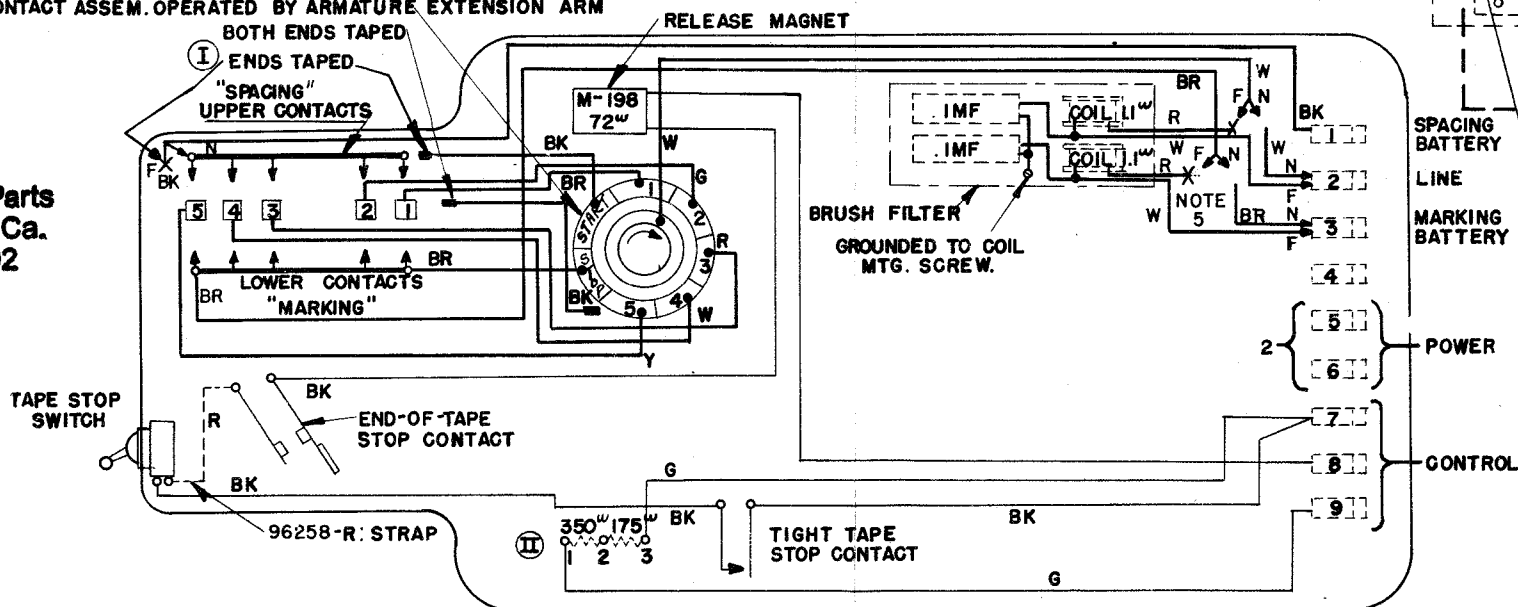


FIGURE 1

RTTY ELECTRONICS  
TELETYPE=Sales-Service-Parts  
PO Box 20101 El Sobrante, Ca.  
94820. (510)222-3102  
mr\_rtty@pacbell.net

NOTES:

- ① UNITS SHOWN DOTTED ARE UNDERNEATH BASE.
- THIN LINES INDICATE WIRES NOT IN CABLE.
- ① CONNECT LEADS WHEN POLAR SIGNALS ARE USED
- ② WHEN SHIPPED, THE RELEASE MAGNET IS WIRED FOR 110 V. D.C. OPERATION OF MAGNET (WITHOUT STRAP) WHEN RELEASE MAGNET IS OPERATED ON 110V. A.C. 50 OR 60 CYCLES RESISTOR TERMINALS 1 & 2 SHOULD BE STRAPPED. WHEN OPERATED ON 25 CYCLES, RESISTOR TERMINALS 2 & 3 SHOULD BE STRAPPED.
- ③ UNNUMBERED STRAPS ARE RM 39522 WIRE AND RM60019 CAMBRIC TUBING.
- ④ IF MOTOR FAILS TO REACH DESIRED SPEED WITH GOVERNOR ADJUSTED, INSERT 50<sup>W</sup>, 100<sup>W</sup>, OR 200<sup>W</sup> IN FIELD LOOP. IF VOLTAGE IS EXCESSIVE, INSERT 50<sup>W</sup> IN ARMATURE CIRCUIT BY SUBSTITUTING ARMATURE LOOP FOR FIELD LOOP. (FOR 50<sup>W</sup>, STRAP 1 & 3 AND CONNECT TO 1 & 2 OR 2 & 3)

ASSOCIATED CABLES	
---	77136
---	77135

WIRE COLOR CODE	
CODE	SOLID COLOR OR TRACER IN WHITE WIRE
G	GREEN
R	RED
W	WHITE
Y	YELLOW
BR	BROWN
BK	BLACK
O	ORANGE
BL	BLUE

REVISIONS

M	7-11-47	42586
N	8-22-47	42696
O	6-16-48	44780
P	2-4-49	46648
Q	3-18-49	46967
R	4-21-49	47289
S	10-6-49	48324
T	12-15-49	48728
U	1-13-50	48851
V	2-6-50	48983

TELETYPE CORPORATION.

WD-2084-V

WIRING DIAGRAM  
TRANSMITTER  
DISTRIBUTORS

XD 71, 76, 86, 94, 106  
200, 201, 205, 209

MOTOR ARRGT.  
AA, AB, AJ, BX, BZ, CA, CW, DJ  
EQ, FR, GA, GV, HY, JT, KG,  
KH, KL.

DRAWN *[Signature]*  
TRACED *[Signature]*  
CHECKED  
ENG'R'D.  
APPRVD. *[Signature]*