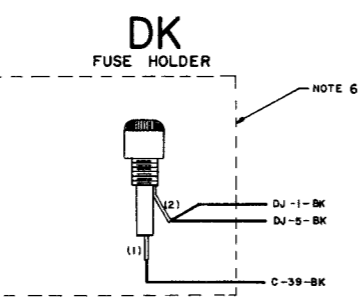
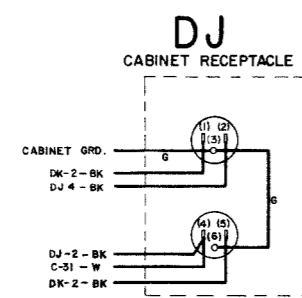
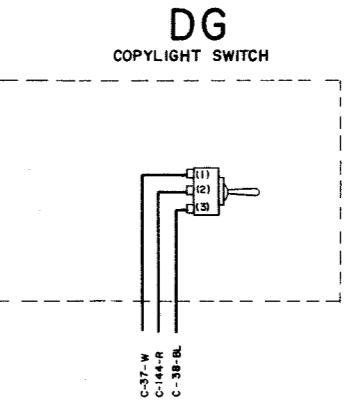
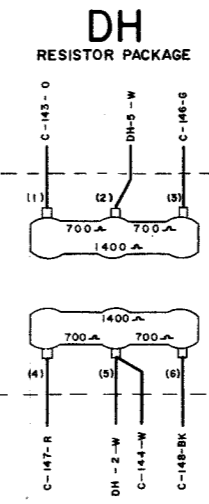
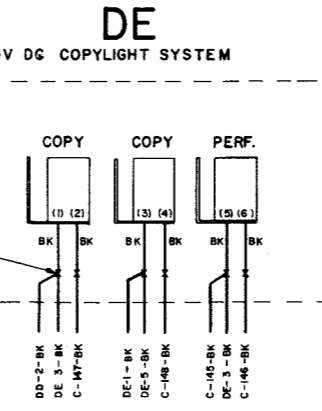
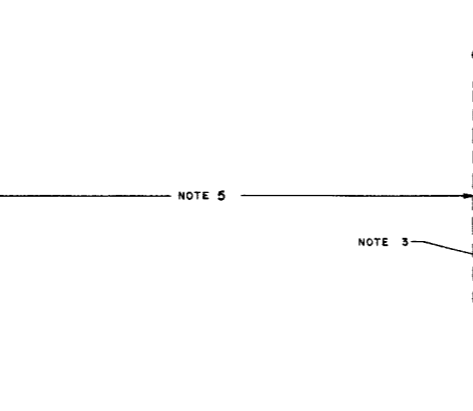
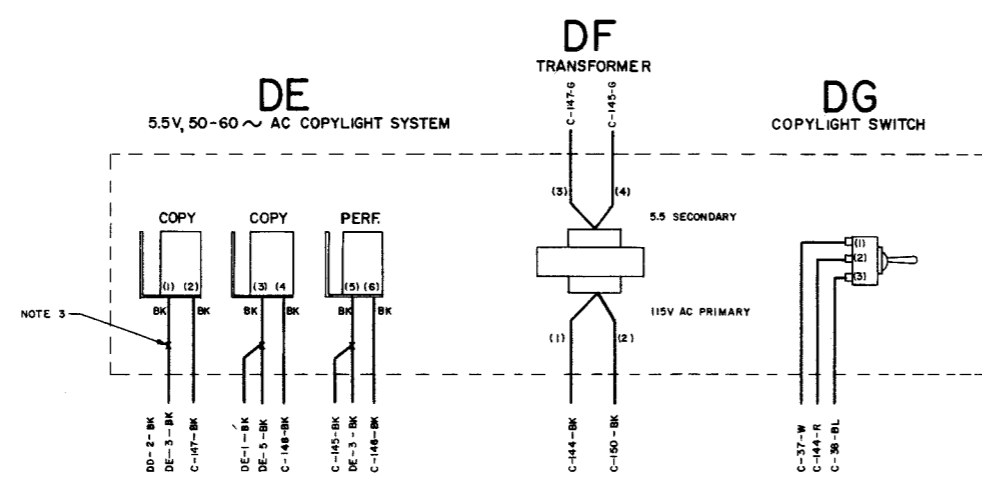
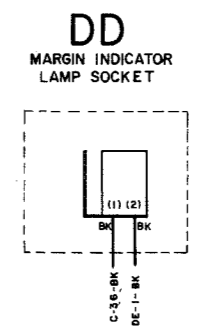
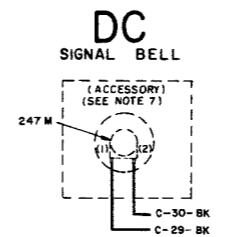
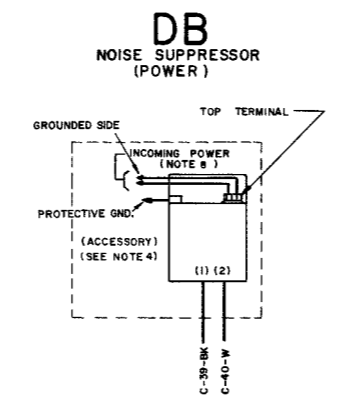
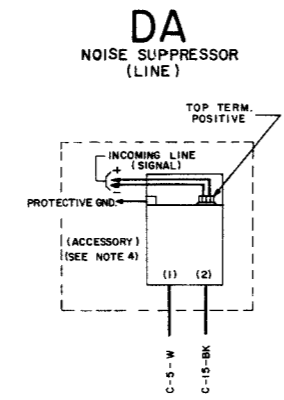
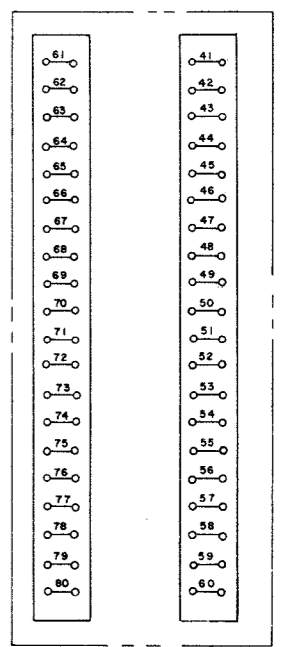
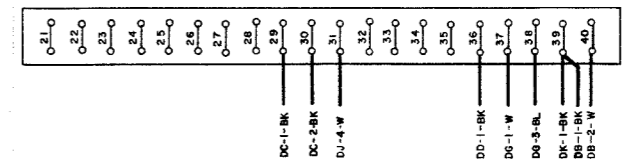
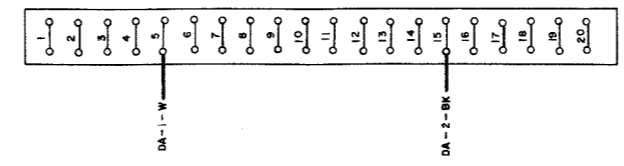
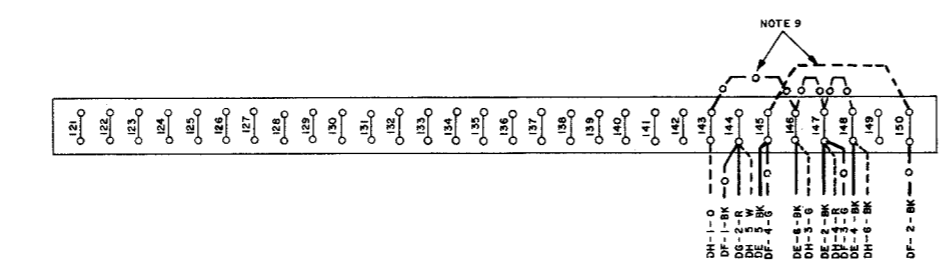
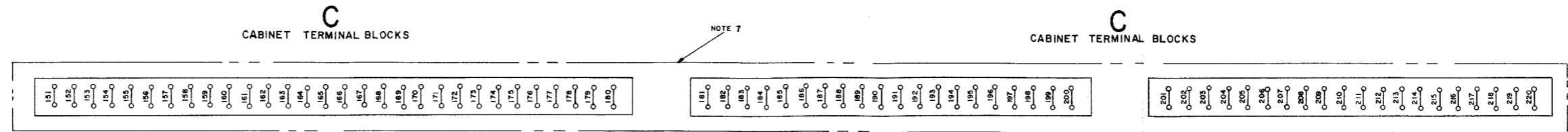
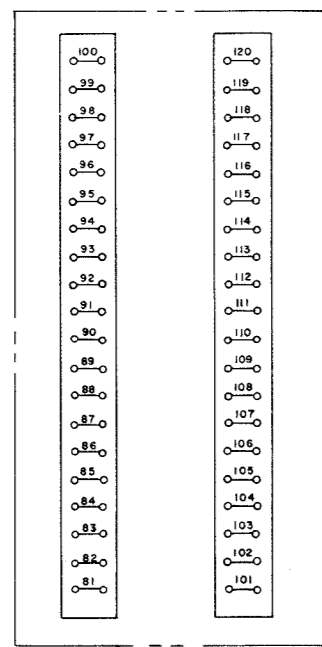


3264 WD		
REVISIONS		
ISSUE	DATE	AUTH. NO.
A	7-2-57	75-2427
B	9-16-57	TP-2397
C	2-24-58	28-8817
D	5-27-58	28-9905
E	9-17-58	28-9902
F	10-7-58	28-9906
G	11-28-58	28-10258
H	4-9-59	28-10528
J	5-22-59	28-11006
K	8-4-59	28-11508
L	8-22-61	71027
M	2-14-62	72426
N	3-13-62	71707
P	4-11-62	73068
R	12-10-62	75280
S	2-19-63	75728
T	3-14-63	75290-1
U	10-3-63	77579
V	10-17-63	78376

NO	NOTES
1.	WIRING LEGEND: 
2.	COLOR CODE BK - BLACK    W-BK - WHITE-BLACK BR - BROWN    W-BR - WHITE-BROWN R - RED    W-R - WHITE-RED O - ORANGE    W-O - WHITE-ORANGE Y - YELLOW    W-Y - WHITE-YELLOW G - GREEN    W-G - WHITE-GREEN BL - BLUE    W-BL - WHITE-BLUE P - PURPLE    W-P - WHITE-PURPLE W - WHITE    W-S - WHITE-SLATE S - SLATE    W-S - WHITE-SLATE
3.	-X- DENOTES SPLICED AND TAPED WIRES.
4.	USE POWER AND SIGNAL LINE INTERFERENCE SUPPRESSORS FOR INSTALLATIONS REQUIRING MINIMUM R.F. INTERFERENCE. FOR OTHER INSTALLATIONS, OMIT SUPPRESSORS AND CONNECT POSITIVE AND NEGATIVE LEADS OF THE INCOMING SIGNAL LINE TO CABINET TERMINALS C5 & C6 RESPECTIVELY. CONNECT THE INCOMING GROUNDED & UNGROUNDED POWER LEADS TO CABINET TERMINALS C40 & C39 RESPECTIVELY.
5.	USE PROPER COPYLIGHT SYSTEM FOR THE TYPE OF CURRENT USED.
6.	CABINET RECEPTACLES REQUIRED WHEN TAPE WINDER OR TAPE STUFFER IS USED.
7.	OPTIONAL FEATURES, REFER TO APPLICABLE WD.
8.	CABINET POWER MUST BE 115V, 50-60~AC WHEN THIS ACCESSORY IS USED.
9.	--- FOR DC APPLICATION. --- FOR AC APPLICATION. --- NORMAL WIRING.
10.	ASSOCIATED CABLES 158287 TRANSFORMER AND CABLE 159329 TAPE WINDER CABLE 154440 CABINET LIGHTS, SWITCH CABLE 159330 RESISTOR PACK CABLE
11.	GROUND WIRE MAY BE ATTACHED TO THE RIGHT 154440 TERMINAL BLOCK ASSEMBLY MOUNTING STUD BY MEANS OF THE TERMINAL BLOCK COVER MOUNTING SCREW AND LOCK WASHER.



RTTY ELECTRONICS  
 TELETYPE=Sales-Service-Parts  
 PO Box 20101 El Sobrante, Ca.  
 94820. (510)222-3102  
 mr\_rtty@pacbell.net

APPROVAL	
D AND E	W M
E-NUMBER	
PROD. NO.	3264 WD
ACTUAL WIRING DIAGRAM FOR M 28 AUTOMATIC SEND - RECEIVE CABINETS	
L.A.C. 200, 201, 202, 209, 209-1, 210, 225, 214, 215, 215, 224 AC-DC APPLICATION 225, 237	
DATE:	4-16-57
P.D. FILE NO.	24-465AA
DRAWN R.W.D.	CHKD. J.M.
ENGD. J.M.	APPD. J.S.
TELETYPE CORPORATION	
3264 WD	