

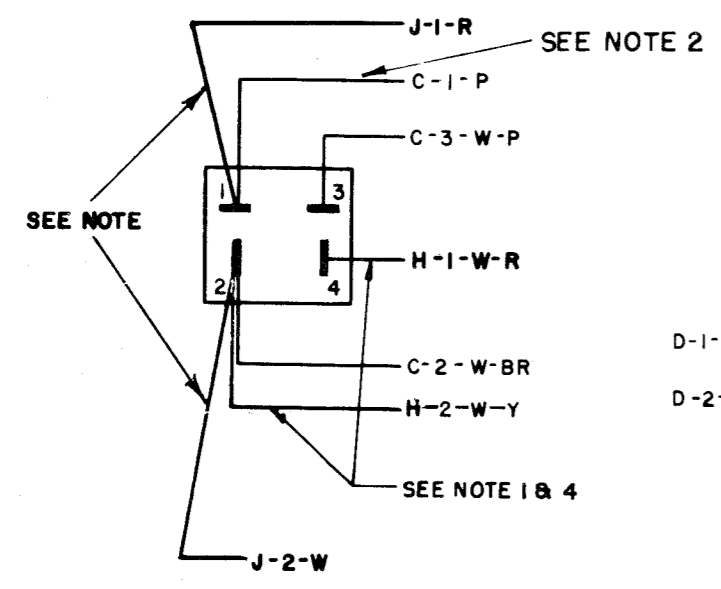
NOTES:

1. WINDER FULL ALARM SWITCH, BIN FULL ALARM SWITCH & ASSOCIATED WIRING ON LTHS 201, 203, AND LTHS 214.
2. TIGHT TAPE ALARM ON LTHS200, 210 AND 214 ONLY.
3. USE TERMINAL INDICATED FOR LOW TAPE ALARM.

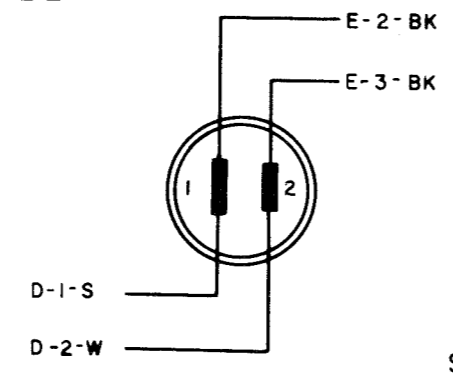
4. MATING CONNECTOR FURNISHED WITH LTHS214. FOR SCHEMATIC SEE 6452WD.

| ISSUE | DATE     | AUTH NO. |
|-------|----------|----------|
| B     | 1-20-58  | TP-3013  |
| C     | 1-20-58  | TP-3017  |
| D     | 2-3-59   | 28-683   |
| E     | 2-3-59   | 28-10767 |
| F     | 9-9-59   | 28-11632 |
| G     | 12-16-59 | 28-12158 |
| H     | 3-2-60   | 28-12796 |
| J     | 5-9-60   | 28-13253 |
| K     | 6-21-60  | 28-13470 |
| L     | 10-6-60  | 28-13957 |
| M     | 11-21-60 | 28-14157 |
| N     | 9-20-61  | 70980    |
| 15    | 9-24-62  | 74597    |
| 16    | 8-30-62  | 77881    |
| 17    | 8-17-65  | 87506    |

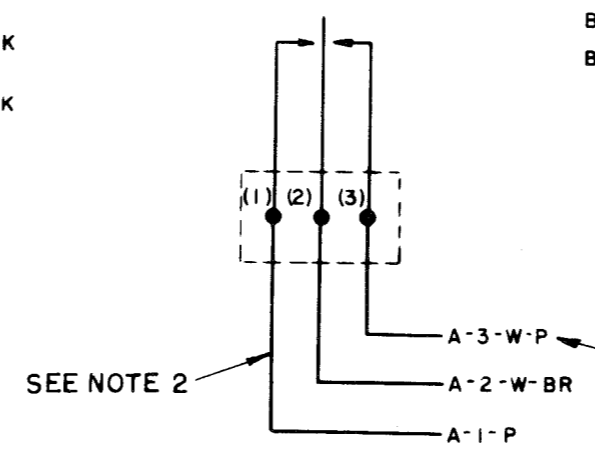
**A**  
ALARM CONNECTOR



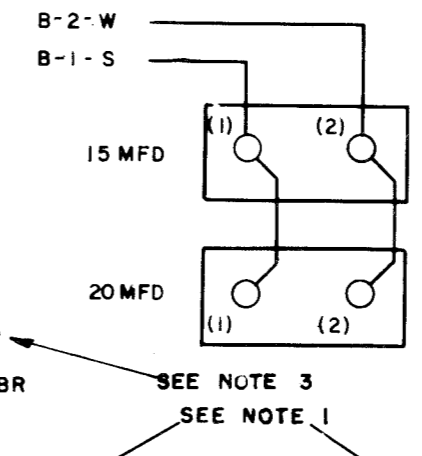
**B**  
CAPACITOR CONNECTOR



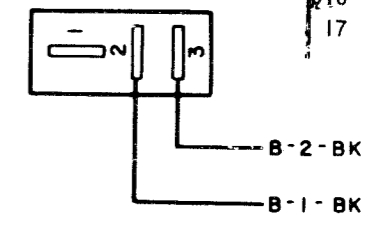
**C**  
SUPPLY REEL ALARM SWITCH



**D**  
CAPACITORS

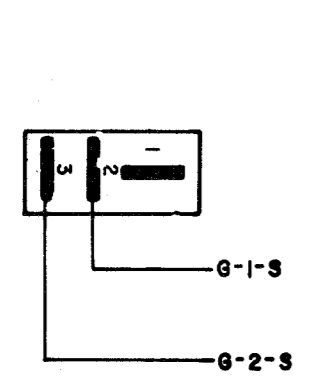


**E**  
TAPE BIN MOTOR CABLE CONNECTOR, RECEPT

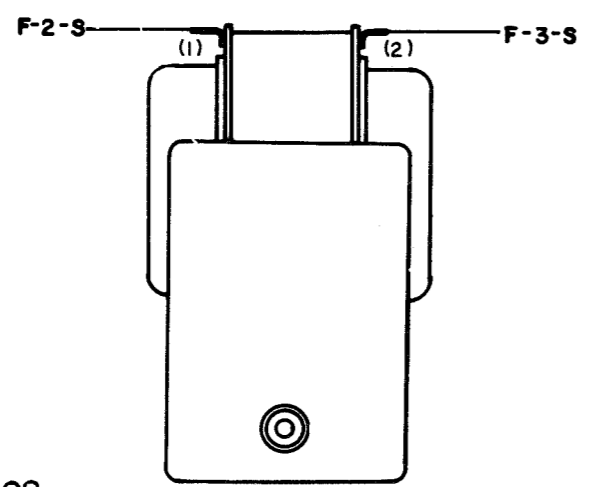


**J** TAPE BIN FULL CABLE CONNECTOR RECEPT.  
**K** TAPE BIN FULL CABLE CONNECTOR PLUG

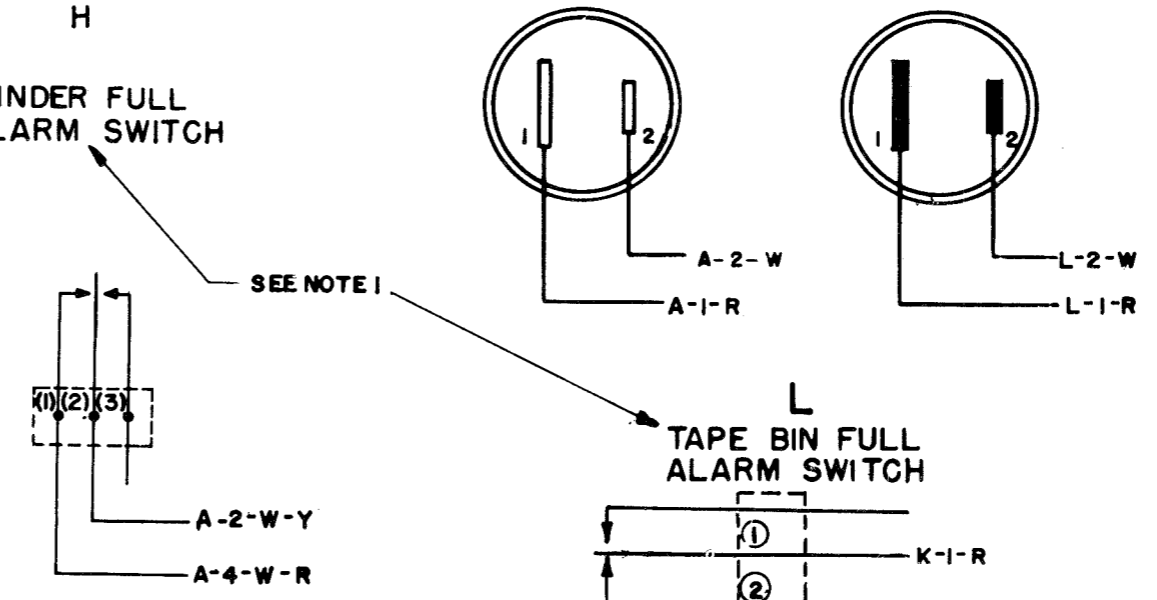
**F**  
TAPE BIN MOTOR CONNECTOR PLUG



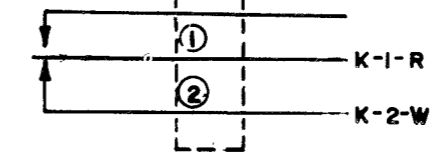
**G**  
TAPE BIN MOTOR A.C. SHADED POLE



**H**  
WINDER FULL ALARM SWITCH



**L**  
TAPE BIN FULL ALARM SWITCH



FOR SCHEMATIC SEE 3281WD

ACTUAL WIRING DIAGRAM  
  
MODEL 28  
REPERFORATOR  
TRANSMITTER TAPE  
HANDLING TAPE  
LTHS 200  
LTHS 201  
LTHS 205, 210, 214

|                          |        |
|--------------------------|--------|
| D AND R                  | E OF M |
| E NUMBER                 |        |
| PROD. NO. 3280WD         |        |
| DATE: 2-11-57            |        |
| P.D. FILE NO. 1-116.65AA |        |
| DRAWN. P.S.              | CHKD   |
| ENGD. A.A.H.             | APPD.  |

TELETYPE CORPORATION  
3280WD

R34

RTTY ELECTRONICS  
TELETYPE=Sales-Service-Parts  
PO Box 20101 El Sobrante, Ca.  
94820. (510)222-3102  
mr\_rtty@pacbell.net